

The Bridge

December 2024

*monthly magazine for the villages
of Corsley and Chapmanslade*



**Wishing all our readers
a very merry Christmas**

Delight in the Christmas Tree Festival, attend some PC meetings, enjoy the Lite Bites Xmas Lunch, take part in some carol singing, pop along to the coffee mornings, come to the Corsley Fayre AGM, there's lots to do in December...



Acer Tree Surgeons Ltd are Wiltshire based, and approved by the Arboricultural Association. Our team are all NPTC qualified and first aid trained and proof of insurance is sent out with every quote

Tree removal – dismantling and felling

Crown reductions, re-shaping and pruning

Hedge cutting

Stump grinding

Qualified surveys and management of trees

Free no-obligation quotations and health check

Contact Nick or Roy on 07590 986261 or 01373 832026

royderham@acertreesurgeons.co.uk

www.acertreesurgeons.co.uk

The Old Post Office, 85 High Street, Chapmanslade, BA13 4AN



Arboricultural
ASSOCIATION

trees.org.uk



Accredited Contractor
www.has.co.uk



FROME HEATING & PLUMBING

25 years' experience.

Oil, Gas & Plumbing.

Servicing & installations.

Landlord gas safety checks.

Unvented hot water storage.

Matt Knight

Warminster.

07896522738

fromeheat@gmail.com



**J. L. KNIGHT
& SON LTD**

J.L.KNIGHT & SON LTD

Heating, Plumbing

& Property Maintenance

Call Jason/Lou

Tel: 01373 832866

Mobile: 07827 454844

Email : jlknight23@yahoo.com

OVER 30 YEARS
EXPERIENCE

Registered
Heating
Business



The Bridge

monthly magazine for the villages of Corsley and Chapmanslade

Articles

Please submit articles either by email to paradisefound86@icloud.com or by hand (legible handwriting please!) and take them to the drop-off locations at Barbers Plant Centre, Chapmanslade, or Acres Supply Garden Centre, Corsley by the deadline – and with the fee!

News, reports, updates, thank you's, etc, from individuals or local organisations are free – the more the merrier – keep 'em coming!

File types

Save your files as .doc – please don't send .docx files – I can't always open them successfully.

Advertising:

Small ads are £1 for each item whether 'For Sale' or 'Wanted'.

Events/local organisation ads (churches, clubs, playgroups, etc) are £2.50 per month for a boxed advert.

Full page ads cost £8, are subject to space availability and cannot be guaranteed,

If you are advertising, don't forget to take the fee – cash or cheque in a sealed envelope please, to either of the drop-off points (Barbers Plant Centre or Acres Supply). We can also take BACS transfers – please email the Editor for all the info.

Please note: no cash, no advert!

Trade advertising

Please see information on the last page.

In this issue...

4 **Playing Field**
birthday bash

8 **Bob's Bafflers**
a cunning quiz

9 **Corsley Tennis Club**
from over the net

Six Open Doors **23**
news from the pews

Parish Council briefing **28**
Chapmanslade

Corsley WI **30**
news from the ladies

33 **Selwood Housing**
sewage system

41 **Whitbourne Chapel**
chapel colloquy

43 **Act of Remembrance**
dedication of new plaque

Deadline

**Deadline for articles
or adverts for the next
issue of The Bridge is
4pm 14th December**

**Please note that no
items will be accepted
after this date**

Diary Dates



December

Wednesday 4th

Coffee Morning (run by the Lite Bites team) – 12.30 to 12 noon, Corsley Reading Room

Corsley Fayre AGM – 7.30 pm, Corsley Reading Room

Friday 6th

Christmas Tree Festival – 3 pm to 5 pm, St Margaret's Church

Saturday 7th

Christmas Tree Festival – 10.30 am to 12.30 pm, St Margaret's Church (with Christmas Coffee Morning)

Sunday 8th

Christmas Tree Festival – 11 am to 12.30 pm, St Margaret's Church

Monday 9th

Corsley Parish Council meeting – 7 pm, Corsley Reading Room

Tuesday 10th

Whitbourne Chapel Coffee Morning – 10 am to 12 noon, Temple, BA12 7QN

Carol Singing, 6 pm, Chapmanslade

Wednesday 11th

Crafternoon – 3 to 5 pm, Three Horseshoes, Chapmanslade

Thursday 12th

Chapmanslade Parish Council meeting – 7.30 pm, Village Hall

Saturday 14th

Deadline for submissions for the January edition of *The Bridge*

Wednesday 18th

Lite Bites Christmas Lunch – Corsley Reading Room

Thursday 19th

Community Church Coffee Morning – 10 am to 12 noon, Three Horseshoes, Chapmanslade

Sunday 22nd

Carols by Candlelight – 5 pm, Whitbourne Baptist Chapel

January 2025

Monday 13th

Corsley Tennis Club Annual General Meeting – 7 pm, Corsley Reading Room

Monday 27th

Film Club – Corsley Reading Room

2024 Royal British Legion Poppy Appeal

Many thanks to everyone who gave so generously to this year's Poppy Appeal. Corsley and Chapmanslade raised over £2313.22. I am still waiting to hear how much was raised through the QR code and gift aid so we have probably raised even more than last year.

This fabulous amount was thanks to donations from the churches, collection boxes in the village pubs, Chapmanslade School, Acres Supply and the house-to-house collections.

I wanted to give particular thanks to the house-to-house collectors who go out in all weathers and walk for miles around both villages.

Every penny we raise goes to help provide our serving men and women, veterans and their families with lifelong care.

Many thanks again and if anyone would like to get involved in next year's appeal please do contact me.

Jackie Jasper
Area Poppy Appeal Organiser
01373 832301

Wiltshire Mobile Library

Chapmanslade School

Arrives 1.45 pm, departs 2.30 pm

Wednesday 11th December

2025

Wednesday 8th January

Wednesday 22nd January

Wednesday 5th February

Wednesday 19th February

Lite Bites October Soup Lunch

Our October Soup lunch was very well attended and, as a result, we were able to donate £146 to our chosen charity – Dorothy House. As usual there were four different soups on offer; all equally popular judging by the little that was left at the end of the morning. It was therefore difficult to judge the most popular, also because some of our 'customers' enjoyed two different soups!

Unfortunately, because our soup lunch is the fourth Wednesday of the month, a reminder here that The Bridge arrives AFTER we have had the lunch. BUT it is not too late for you to think about coming to our Christmas lunch! It takes place in the Reading Room on Wednesday 18th December and is always a friendly village event. At Christmas we always think about the children and our Christmas lunch aims to raise as much money as possible for our twin charities of Children's Hospice SW and Julia's House. We do not ask for a specific amount, just what you can afford in support of these two very worthwhile charities.

We shall be taking names for the Christmas meal at our next soup lunch and at the Coffee morning on Wednesday 4th December. If you have had to miss both events and would like to come to the Christmas meal, please contact either myself on 01373 832171, Di Britten on 01373 832515, or speak to any of the Lite Bites team. We look forward to making the Christmas lunch a very enjoyable village event and a great start to the Christmas festivities. It will only be 7 SLEEPS UNTIL CHRISTMAS!!!

Maureen Willcox

Corsley Playing Field

70th Anniversary Celebration

Neil Carpenter reports on the 'birthday' held on Saturday 16th November

There have been a lot of changes at the Field over the last 70 years. We are on to our second pavilion, we no longer have a grass tennis court and there is more play equipment, which has also got much more expensive. The one thing that hasn't changed is that the Playing Field is free to use whoever you are, at no cost. We have also worked hard to make sure it is fully accessible. The Playing Field was maintained and open all through lockdown as an outdoor space for villagers to use and is now regularly used by those using the gym as part of their warm-up.

However, many villagers may not know that the War Memorial Playing field is a registered charity with a team of hard working Trustees and not Council or Parish Council run. This means that we have to raise money to cover every cost and piece of play equipment. Over the last 10 years we have raised around £150,000 to support the development of the field with new play equipment and a bike area, improved car parking, maintenance equipment such as the tractor and mowers and even the pavilion's veranda, built by villagers.

Every year it costs between £2,000-£3,000 to just cover the costs of insurance and maintenance which, because of inflation, is increasing every year. This year, with major tractor repairs needed, it was at the higher end of that cost range.

The Parish Council typically supports the

Playing Field with a donation towards the insurance costs and, in return, the Playing Field allows the Parish Council to borrow equipment when needed such as the tractor, mechanical brush and mower for the orchard. We hope this will continue as we see the Playing Field as a vital village asset used by many and available to all and, as such, something the Parish Council should be supporting.

Anyway back to the celebration...

The event was amazing, well attended despite the fact we didn't have the military brass band playing as they did on the opening and it was a bit rainy.

A big thank you to everyone who came along and made merry!

We are sure that the attendance had nothing to do with the free mulled cider, burgers, sausages, doughnuts and marshmallows available, to roast over the fire pit!

As some of you may know, the Playing Field now has a bar license and can sell alcohol, so, now the cricket season has finished we took the opportunity to sell off all the alcohol we had left and thank you for all those that helped us get rid of the stock!

Finally, based on some feedback, it was suggested that we could hold a New Years Eve event.

Please let us know if you think that is a good idea?

Neil Carpenter



Corsley & Chapmanslade Churches

Christmas Coffee Morning

In conjunction with the Christmas Tree Festival

Saturday 7th December 10.30 – 12.30

at St Margaret's Church, Corsley

Admission £5 to include tea/coffee and mince pies

Bring & Buy stall
with cakes & preserves

Tombola

Happy Hounds

DOG WALKING WITH MELANIE LUCAS

Woodland Retreat

Our woodland retreat is set in an acre of woodland. An exclusive safe, secure, natural and tranquil space for dogs and their owners to use – supporting both physical needs and wellbeing

happyhounds.life • 07867 798035
Chapmanslade



CHRIS SEVIOUR
Building Services

07894 708949

cmseviour@gmail.com

Roofing, Loft conversions,
Extensions, Plastering,
Natural stonework

For your
Heating Oil Supplies
contact

KINCH FUELS

at their
local depot in
Devizes, Wiltshire

Telephone 01380 727102

*The company you and
your home will warm to*

UPVC REPAIRS WILTSHIRE.CO.UK

FOR PROFESSIONAL WINDOW & DOOR REPAIRS

Are you having a problem with your UPVC windows or doors?

- ✓ Misted glass
- ✓ Broken or faulty window hinges
- ✓ Faulty locks
- ✓ Jammed windows or doors
- ✓ UPVC door adjustments
- ✓ Window and door handles

Call us – we are here to help

All work guaranteed

01373 430010 07795 143228 www.upvcrepairswiltshire.co.uk

the three horseshoes

Open daily from 10AM-11PM
serving delicious home cooked food
(12-3, 6-10 Mon-Sat. & all day Sun.)

Enjoy a refreshing drink in our beer garden
with spectacular views of Longleat and Cley Hill,
or indulge with one of our regular meal deals
by the warm open fire on a bitter winter's day.

We organise monthly events,
featuring live music, comedy + much more!

follow us on Facebook for more details



threehorseshoeschapmanslade



Chapmanslade Village Hall

Can be hired for all your functions:
parties, weddings, meetings, classes, etc

For hiring information, phone
Ken Davies 01373 832034 or email
kennethdavies1949@gmail.com

YOGA CLASSES

Corsley Reading Room

Tuesdays 9.30 - 11 am

and

Tuesdays 6 - 7.30 pm

Jackie Jasper

yogawithjackiej@gmail.com



FAIRFIELD ELECTRICAL

1971

Your Local Electrical Services

LIGHT, WARMTH, POWER & PROTECTION

CALL OR EMAIL NOW FOR A FREE QUOTE

01373 464577

enquiries@fairfieldelectrical.co.uk

www.fairfieldelectrical.co.uk

OVER
50
YEARS
Est. 1971



Bride by Design

Bridal gowns and accessories



2 Silver Street
Warminster, BA12 8PS

Please contact us to
arrange an appointment

t. 01985 217216

e. info@BridebyDesign.biz

www.bridebydesign.biz

COMPUTER & LAPTOP REPAIRS
UPGRADES / SYSTEMS & LAPTOPS

VIRUS REMOVAL / BROADBAND
WIRELESS / NETWORKING



FAST, FRIENDLY, PROFESSIONAL SERVICE

COMPETITIVE RATES

ONSITE OR WORKSHOP



call
01373 302901

www.ntscomputing.co.uk

help@ntscomputing.co.uk

LAPTOP REPAIRS

We also replace
laptop screens,
keyboards,
CD-DVD drives,
fix overheating
and more

James, Rob and Adam, former employees of Roger Patch Ltd are pleased to introduce...

CMP Complete Ltd General Builders

19 Swaledale Road, Warminster, BA12 8FH

James 07801 868288

Rob 07766 905131

email cmpcompleteltd@gmail.com

HETAS registered to fit woodburners

Bob's bafflers

- 1 Where does the Royal Family usually attend the Christmas Day church service?
2. What does Father Christmas traditionally deliver to naughty children instead of presents?
3. Which horned creature is said to punish naughty children at Christmas time?
- 4 Which angel is said to have visited Mary?
- 5 When is Epiphany?
- 6 In which Ocean can Christmas Island be found?
- 7 Which pantomime does Buttons appear in?
- 8 What is the name of the snowman in the film 'Frozen'?
- 9 In which song is everything "calm and bright"?
- 10 What is the name of the Jewish Festival of Lights which takes place in December?
- 11 Which animated film features the song 'Walking in the air'?
- 12 The usual roll call of Santa's reindeer comprises of Rudolph, Dasher, Dancer, Prancer, Vixen, Comet, Donner, Blitzen and which other?

Answers on page 46

Whitbourne Baptist Chapel

Carols by Candlelight



5 pm, Sunday 22nd December
Temple, Corsley, Wiltshire, BA12 7QN

If you need transport, call Adrian on 07977 935755

www.whitbournechapel.org

Corsley Tennis Club News



The ‘anticyclonic gloom’ resulted in the UK being blanketed in grey mist and fog, with virtually no sunshine for the majority of November; not necessarily ideal tennis conditions! However, at Corsley Tennis Club, despite the courts being slightly damp, with the lack of wind and the temperatures holding up it was actually good tennis conditions and lots of play has continued throughout the month. Conversely, the leaves have been slower to fall so there has been a continuous effort on leaf clearance before playing – thank you to all who have mucked in!

For those of us who are tennis fans, I thought it would be worth mentioning the incredible talent of Jack Draper. Despite his winning streak coming to an end in Paris, he recently won his first ATP 500, the biggest title of his career after a straight sets win over Karen Khachanov in the final of the Erste Bank Open in Vienna, Austria. He became the first British player to win the trophy on his Vienna debut since Andy Murray 10 years ago. It is going to be exciting to watch him as he builds on this success next year.

Moving on to tennis club business, we are extremely grateful to the people who have recently come forward and shown an interest in filling committee role vacancies. As said previously, filling these roles is vitally important to keep the club running smoothly and efficiently. We now have a lot to look forward to in 2025.

No doubt the air will start to turn colder and fair-weather players like me might be tempted to put their rackets in a cupboard. But just remember all the physical and mental health benefits of tennis; strong bones, improved aerobic fitness and making new relationships to name but a few. For those who just want to give it a go, for those who want to keep fit, for those who just love playing tennis (no matter how cranky their knees!) there is a great thriving community at ‘CTC’ so come and join us!

Dates for your diary

We have a CTC tree on display in December (see dates below) at St Margaret’s Church, Corsley. If you haven’t already, please help us with the ‘tennis themed’ decorations to make our tree spectacular and start to get us all in the Christmas spirit! Contact Kate on 07791 975411 for more information.

Christmas Tree Festival – St Margaret’s Church, Corsley:

Friday 6th December 3-5 pm

Saturday 7th December 10.30 am-12.30 pm

Sunday 8th December 11am-12.30pm

Annual General Meeting

7 pm, Monday 13th January 2025 at Corsley Reading Room

Have a very Happy Christmas!

Kate Jackson
Committee Member



Pears Electrical Ltd

Nigel Charteris BSc (Hons) Electrical & Electronic Engineering, MIET

PROFESSIONAL LOCAL ELECTRICIAN
serving BA11 to 13 area postcodes

**Domestic Electrics
Small Jobs
Emergencies, Faults and Trouble Shooting
Building Automation
Heating Systems**



Part P registered with www.napit.org.uk Reg No. 6329

Contact 07717 534026 www.pearselectrical.co.uk

Company Reg No. 15138141 in England Registered Offices - 14 Upton Scudamore, Warminster BA12 0AE



S B Services



Contact Sean
07828 671566

*For your garden maintenance
and home improvements*

DPB Plastering

Dara Bermingham

Contact us to arrange a visit for free quote
07707304518

dpbplastering@outlook.com
Facebook: DPB Plastering

Mark Crabbe Ltd

Whitbourne Springs, Corsley

Carpentry & Joinery

Kitchen Fitting

Garden Rooms

Renovations

Extensions

07889 140299

markcrabbe@hotmail.co.uk



GIVINO

GIN & WINE

- 400+ Wines
- 60+ Vegan Wines
- 30+ Fortified Wines
- 40+ Gins
- Christmas Gifts
- Tastings & Tapas



Tuesday - Friday 10am - 5.30pm | Saturday 10am - 4pm
WWW.GIVINO.CO.UK 0330 056 2995

R18 Marshall Way, Commerce Park, Frome, BA11 2FE
Follow directions from the Budgens roundabout.



Mole Catcher

01373836350

07512681111

No Mole

No Fee



Kevin O'Mahony

Quality Painter and Decorator

Internal and external painting

Artexing

Wallpapering

Coving

Hand painted kitchen units

07724 349447 or 01985 301197
email kevo7743@googlemail.com
www.thewarminsterpainter.co.uk



Installation and repair of:
Digital Freeview TV aerials

Sky and Freesat satellite dishes

CCTV systems

Wireless networking

Mob: 07825 812955
Tel: 01985 220247
info@ktvsystems.co.uk
www.ktvsystems.co.uk

Heaven's Gate Carpentry & Joinery

From custom builds to detailed finishes, we bring your ideas to life with expert craftsmanship

Excellence in every detail

m. 07813 281789
e. heavensgatecarpentry@gmail.com

Cornwall

6 bedroom holiday house

Sleeps 12

Private access to beach

Dogs allowed



[www.classic.co.uk/holiday-cottage/
desc-2181.html](http://www.classic.co.uk/holiday-cottage/desc-2181.html)

Please follow the link for
details and availability

Contact Sandy Parrish 832522 for
'private' booking

Corsley Tennis Club



New members welcome –
all ages, all abilities

Three hard courts available all year

Weekly junior coaching available
Low subscriptions

www.clubspark.lta.org.uk/
CorsleyTennisClub

Steve Dayman-Johns

Driving Instructor

Condensed Courses and

Gift Vouchers available

email stevekdj@gmail.com



Tel 01373 865422 - Mob 07730 445648

Corsley Parish Council

Parish Council Briefing (1)

Parish Clerk, John Willcox, reports on the meetings held in June, July and September

This report should have been published in the November issue of The Bridge but, due to an unfortunate admin error by the Editor, was not.

The Parish Council had met a number of times since the last report in The Bridge:

At the Annual General Meeting on the 13th May, a PC meeting on the 10th June, the Annual Parish Meeting on the 8th July, a PC meeting on 9th September and a subsequent closed meeting on 23rd September.

Annual General Meeting

At the AGM, Neil Carpenter and John Phillips were confirmed as Chair and Vice Chair of the Parish Council respectively.

Planning application

There was only one planning application **PL/2024/03070** – 46 Whitbourne Moor – conversion of redundant agricultural buildings into a dwelling and associated operational development which the PC had no objection to and which has subsequently been approved by the planning authority.

Finance

The PC agreed that for this financial year it would declare itself exempt from a limited assurance review; having the previous year agreed to a full blown audit which raised no issues/comments. The suite of financial reports which had been presented were approved.

10th June

This meeting was held primarily to discuss

the planning application (2022/0333/FUL – erection of 3 dwellings at Lane End Hill) which had been submitted to Somerset Council. Under normal circumstances the PC would not have received this but it had been deemed that the development was so close to the Parish boundary that the PC should be consulted. Following comments made by members of the public who were present and consideration by councillors it was agreed that the PC would object to this application.

Annual Parish Meeting

The APM is a statutory obligation on the PC to report to the ratepayers what they have been doing. The PC had arranged for representatives of the Longleat Estates to attend and present on matters Longleatian and answer questions. This was followed by the Chairman's annual report. Disappointingly, there were only six members of the public present, only four of whom were residents of the parish.

September meetings

There were two meetings in September. It was reported that the PC had been advised to put in a retrospective planning application to enable the container that is to be used to house emergency planning equipment to be sited in the car park of the Royal Oak. It was also reported that the planning application submitted to Somerset Council, referred to above, had been refused by Somerset. A resignation had been received from a Parish

Councillor and, following discussion, it was agreed that if there was no call for an election the vacancy would be filled by co-option.

Grants/donations

It has been the practice of the PC to make grants/donations to village-based organisations for both specific projects and ongoing essential maintenance. It was agreed that this should continue and that the criteria should be extended to include providing match funding and/or seedfunding to better enable organisations to seek funding from other bodies.

Communication

The PC also debated how best to respond to the volume and varied nature of the communications that comes in and how outgoing communications should be handled and by whom. This debate included contributions from members of the public who were allowed to speak. A subsequent meeting discussed the issues that had been raised and how best to manage going forward.

Maud Davies Close

Villagers will be aware that the development at Maud Davies Close is continuing apace. The Parish Council continues to be in touch with the project team managing the development and continues to stress that 'locals' should get preferential treatment; the following is a summary from Michael Kalvis the Residential Development Project Manager.

“The accommodation will be available from end December/start of January.

The first step is to register with Homes4Wiltshire in order to be added to the Housing List, this can be done at www.homes4wiltshire.co.uk. All interested parties are encouraged to register as soon as possible. It may take some time for the application to be processed, as at least one as the resident has confirmed

New properties are announced each week that people on the Housing List can apply for. Wiltshire Council has clear guidelines for matching homes to

those with housing needs. These can be seen online and a connection to the parish features in the criteria: https://www.homes4wiltshire.co.uk/Data/Pub/PublicWebsite/ImageLibrary/Allocation%20Policy_%207Jan2023_FINAL.pdf” Allocation Policy_Jan2023_FINAL.pdf (homes4wiltshire.co.uk)

Progress on site is going well with hard and soft landscaping beginning this week. Although we have lost some time due to weather, I anticipate that the properties will be completed in December. With the Christmas break it may be pertinent to advertise the properties in the new year, but I will keep you posted nearer the time.

You are welcome to pass on my contact details to any resident that expresses an interest in affordable rented homes – michael.kalvis@wiltshire.gov.uk , or my colleague Rachael Swann if they are interested in Shared Ownership – rachael.swann@wiltshire.gov.uk

I have kept a list of interested parties and will contact them in advance of the properties being advertised.”

Flooding

Villagers will also be aware that there have been a number of incidents of flooding in the parish with particular problems at Lyes Green. Local farmers and Wiltshire Highways have done sterling work in clearing the lanes and drains of the mud and debris resulting from the deluges that we have received. Thanks too to Councillor Parks for mobilising the Council teams so quickly. Wiltshire Council has declared a climate emergency and the Parish Council are aware that similar problems will occur in the future or indeed get worse, due to climate change, and are working with Wiltshire Council to find ways to mitigate and manage this including receiving signage and other materials to be used where roads are flooded.

*John Willcox
Parish Council Clerk*

ALLSOP CARPETS & FLOORING

DOMESTIC ♦ COMMERCIAL ♦ INDUSTRIAL

Unit J11, Jenson Avenue, Commerce Park, Frome, BA11 2FQ

TEL: 01373 463866 MOBILE: 07887 953014

www.allsopcarpets.co.uk

KEYVOLUTION

Locksmith and
Carpentry Services
serving the Wiltshire Area

Warminster based company offering locksmith and carpentry. Police cleared, reliable and honest service. Any other quote beaten.

- BS3621 lock upgrades for house insurance approval
- Garage doors, locks and running gear
- Lock repairs – specialising in Chubb mortice locks
- Upvc double-glazed door and window locks fitted – even old ones!
- Door or window locks opened destructively or non-destructively (indemnity required for these services)
- Digital code locks supplied and fitted
- All types of carpentry work – mostly 2nd fix and maintenance

Check out my website

www.keyvolution.co.uk



or call Ben on 07748 214799 or 01985 219799



COMPUTER PROBLEMS?

01373 812804

Email
Advice for new users
Anti-virus defence
Web sites
Custom programming

Networks - home & office
Home tuition
Web access
Privacy & security
Repairs

www.technojeeves.com

info@technojeeves.com

candlelightcare

A family run and owned company offering domiciliary and live-in care to keep you safe and independent within your own home, as and when you need it.

Call 01225 776000

Covering Dorset, Somerset, Wiltshire and East Sussex.

www.candlelightcare.co.uk

3 Manor Farm Offices | Corsley | Wiltshire | BA12 7QE



BARTERS PLANT CENTRE

'Passionate about Plants'

Shrubs ♦ Perennials ♦ Trees ♦ Roses ♦ Conifers
Climbers ♦ Fruit Trees ♦ Hedging ♦ Soft Fruit ♦ Seeds
Bulbs ♦ Basket Plants ♦ Bedding ♦ Vegetable Plants

National Garden Gift Vouchers

www.barters.co.uk



**Barter's Plant Centre
open 7 days a week**

Monday – Saturday 9am – 5pm
Sunday 10am – 4pm

01373 832694 or email: retail@barters.co.uk
www.barters.co.uk



BURROW



**Septic Tank Owners
register your interest
in a fully-funded upgrade**



Due to the Phosphate pollution in your local river catchment we are operating a septic tank replacement scheme using private funding.

We install wastewater treatment plants that remove almost all pollutants, with funding secured from planning applicants who need to create a positive impact on the environment.

Register on our website today.



burrow-environmental.com 01935 507 508

Hypnotherapy

If you need help with:

Anxiety
Depression
Phobias (such as flying or spiders)
Panic attacks
Relaxation
Weight management
Smoking cessation
Natural childbirth
Confidence
Public speaking
Exam nerves
and much, much more...

Call ANJI HOLLAND on
07944 647 978 / 01373 832 898
to enquire or just for a chat

www.hollandhypnotherapy.com

With practices in Chapmanslade and Bath

I am a member of the National Council for Hypnotherapists
and am bound by their code of practice and ethics

Corsley Parish Council

Parish Council Briefing (2)

The PC reports on recent meetings

Since the challenging meeting that took place on 9th September, the Parish Council has continued to carry out its duties and has met for three more formal meetings. A closed meeting took place on 23rd September, followed by two open meetings on the 6th November and 11th November.

CPC Meeting 6th November 2024

The meeting on the 6th November had only two substantive items. Both items related to an ongoing situation within the PC.

Agenda item.1 related to two resolutions taken by the Council, both concerning The Chair of the Parish Council. The first was a majority vote of no confidence in The Chair and the second a majority vote that The Chair had broken the code of conduct under which the Council operates.

- The Chair was asked to respond to these resolutions, but declined to do so. His awaited response was moved to the next scheduled meeting, to come under Item.10 on that agenda

Agenda item.2 was a letter to a parishioner which Councillors had composed in draft form, in response to a complaint and request they had made to CPC following a series of events which began in May this year, including a report in Septembers edition of The Bridge.

- The letter was agreed subject to some amendments and was subsequently delivered electronically

CPC Meeting 11th November 2024

At the meeting on the 11th November the PC began by discussing a planning application,

PL/2024/09067. Councillors agreed they had no objection to this. Reports were received on 'Streetscene' and 'Rights of Way', both of which described the positive continued work being done in both of these areas.

The PC had received four grant applications from village based organisations/groups.

Applications must be accompanied by a copy of the organisations accounts. *There is provision for individuals/groups who have no formal structure to apply for grants without providing accounts.

The first was on behalf of the *Team that runs the Village Coffee Mornings and the Lite Bites lunch sessions. This was approved with a majority vote

The second was made by the Corsley and Chapmanslade Parochial Church Council for general maintenance of the open churchyard, to include trees, grass and repairs to the perimeter wall, this was approved with a unanimous vote

The other two applications were deferred for the following reasons:

*Mr De Groot required more information regarding the repair materials and future storage of the stage

The Playing Fields pending submission of their accounts

Following the resignation of a Councillor earlier in July this year the PC had agreed to co-opt to fill the vacancy. Following a notice in Novembers edition of The Bridge, three applications had been received. The PC

appointed Mr Chris Brown to fill the vacancy.

Agenda item.10, Correspondence/
Communications.

The Chair, at the previous meeting, had advised Councillors that he would respond this evening to two majority decisions passed by them at the PC meeting on September 23rd.

The Chair read out a statement in which he chastised Councillors for the unprofessional way he perceived they were behaving towards The Clerk. He noted the decisions taken by Councillors on the September 23rd, but refused to make any comment and said that he would respond at a later date, deferring for a second time

Unfortunately, feelings were running high and the meeting then degenerated into a less than edifying spectacle with both members of the public and Councillors airing their views. The Chair was repeatedly, directly addressed by a member of the Parish who requested an apology from him, however he chose not to respond or engage with them.

Three Councillors again put a plea to The Chair to step down from the role. He was made aware that stepping down as Chair but remaining a Parish Councillor would help to pacify matters and let the CPC move on in a more professional manner. He declined to do so.

Following this, a Councillor advised of his intention to resign if The Chair did not. He then handed out a list he had personally compiled, of rules from the PC's own Code of Conduct, The guidelines of Role of the Chair and Nolan Principles. Along with several examples of breaches he considers to have been made by The Chair.

To date, there has been no resignation and the Council has its full capacity of nine.

Agenda item.11 AOB, A Councillor drew attention to The Thynne and Keyford Educational Foundation and suggested there is a need to look at all applicable Trusts and

make sure that CPC are being represented where needed. ie The Len White Trust and The Reading Room Committee etc.

Agenda item.12 The date of the next PC meeting

Two dates have been set, Monday 13th January 2025 and an interim meeting on 9th December to cover deferred Item.8 Finance and the two deferred grant applications.

As this will be the last edition of The Bridge before Christmas, we would like to wish you all a very merry Christmas and a happy and healthy New Year.

*Author unattributed
(Unexpurgated)*

Whitbourne Chapel Coffee Morning

**Free cakes, coffee
and chat**



**Every 2nd Tuesday of each month
from 10 am to 12 noon
Temple, Corsley, BA12 7QN**

**If you need transport,
call Adrian on 07977 935755**

www.whitbournechapel.org

Debbie Detox
Believing in You

On-to-one personal lifestyle coaching
sessions. Topics include nutrition, exercise
and mental wellbeing.

Corsley Reading Rooms on a Friday.

To book, email DebbieDetox@live.co.uk
For more details visit website: DebbieDetox.co.uk

Corsley Parish Council

Meeting notes

Unofficial notes from the last meeting

Note from the Editor.

Due to the lack of useful information in the PC's briefing, I felt compelled to write up some notes from the meeting I attended on 11th November. The following is presented in the order of the agenda and may not be a complete record of the proceedings as I wasn't expecting to have to refer to them in such detail...

Planning applications/appeal

PL/2024/09067 Demolition of existing porch and roof and replacement with new extension to house shower room, demolition of rear dormer and replacement with two storey rear extension. Re-cladding of existing dormer at front of property at Greenlea, 10 Birchwood Close. *The PC had no objections.*

2024/0852/PIP referred by Somerset Council; Permission in principle for residential development of three dwellings at Stoneage Farm was refused by Somerset. An appeal to this decision has been made by the applicant. *The Clerk explained that there was no need for the PC to resubmit their objections as they would be carried forward to the appeal.*

To report:

PL/2024/03070 Stables adjacent to 46 Whitbourne Moor, was approved with conditions by the planning authority. *The PC had no objections.*

PL/2024/06518 Creation of temporary winter exhibit at Longleat Safari and Adventure

Park. *This had been approved with conditions by the planning authority.*

The Parish Council's retrospective application to site the emergency planning container in the car park of the Royal Oak has been approved, on a 'temporary' basis by Wiltshire Council. Oliver Hares raised a queried why a 'permanent' application had not been granted. Alice Helliard said that 'temporary' could mean 20 years or so e.g. the Little Cuckoos building.

Streetscene

Lavinia Mitchell and David Ball raised concerns about delivery lorries damaging properties down Reading Room hill when turning into the narrow lane. "No Access" signage was discussed.

Flooding

The recent flooding of properties at Lye's Green in particular was discussed. Sandbags, etc., had been provided to prevent further ingress to properties, bales had been stationed at the offending gateways to prevent more mud/water causing further damage and mayhem. Wiltshire Council were praised for their speedy reaction to this event.

Local Highways and Footpaths Improvement Group (LHFIG)

A couple of applications had been made for grants for signage and rights of way. Councillor Bill Parks said that Wiltshire Council had considered the applications but reported that all applications must be

discussed and voted upon by the PC and accompanied by confirmation that funds were available should contributions to costs be required.

Other

Apologies, but I failed to make any notes on this agenda item.

Rights of Way

Alice Helliar reported that Cory 9 is to have a kissing gate installed rather than a stile (accessibility). Cory 20 is to be resurfaced after the disastrous attempt last year. Lavinia Mitchell requested a 'horse-friendly' surface - splitting the path in two - the other half suitable for walkers and cyclists who use this route from the villages to Warminster to avoid the dangerous roads.

Parish Council Grants

- The trustees of the Reading Room, on behalf of the Lite Bites and Coffee Morning (voluntary group), requested a grant to cover the cost of hiring the hall and electricity. Judith Selman wanted to see the Lite Bites accounts before committing to the grant. Judith Selman abstained from the vote to grant the costs, but it was carried by a majority.
- Corsley and Chapmanslade Parochial Church Council requested a grant to cover the costs of mowing the churchyard, repairs to the roadside wall damaged to large trees, etc. The vote to allow the grant was unanimous
- Resident, Jon de Groot, requested a grant to repair the stage that become unusable due to damage. If repaired it would become a village asset to be used by anyone who wanted to do so. Again, accounts were requested. The PC got mired in a discussion about the point of restoring it if it was to be kept outside (it won't be). The decision to allow the grant was deferred to the next meeting upon receipt of further information.

- War Memorial Playing Field requested a grant to support the cost of insurance. Accounts were supplied but the Clerk had forgotten to bring them. The decision to allow the grant was deferred to the next meeting for scrutiny of the accounts.

Precept

In order to achieve Wiltshire Council's deadline of 20th January for the precept, an extra meeting will be held in December.

Councillor vacancy

Three applications were received. Applicants were given leave to make their case; Sarah Linnell Evans and Chris Brown opted to do so. Chris Brown referred councillors to his application. Claire Firman-Ford's brief application was read to the councillors. The councillors voted to co-opt Chris Brown. Sarah Linell Evans requested feedback on the decision, which was duly given.

Correspondence/communication

- The Chair read a statement ref available redress for the behaviour of the councillors towards the Clerk; as a paid member of the PC, he is entitled to raise a formal complaint to Wiltshire Council should he wish to do so.
- Regarding correspondence, the Clerk was asked to filter and forward all relevant material to the councillors. Guidelines on what constituted relevant were not given.
- The White Horse Housing Association requested feedback on how the flower meadow at Baytree Close was looking.
- A letter from a charity in Frome asking whether Corsley wanted to nominate trustees to a 'new' charity that, assuming Charity Commission approval, was going to be formed by amalgamating two existing charities.
- The councillors had written a letter of apology to Mr Wenn regarding certain accusations levelled against his child. Mr Wenn was not satisfied by this letter and

continued...

demanded an apology from the Chair. This was not forthcoming. Judith Selman said the the Chair should step down. Alice Helliard made the case for the Chair to step down from his current position to become a councillor and to carry on his good works. David Ball distributed printouts to the councillors and the public outlining the Chair's alleged breaking of the codes of conduct for parish councils. He added that if the Chair did not resign forthwith that he would publish the list on Facebook and he would resign the following morning. The Chair did not resign.

- Thereafter, two members of the public

got into a spat about who's child had done what. It was quickly defused.

- I spoke to ask the PC to work together for the good of the village, who they purport to represent.

Any other business

Councillors discussed whether they should have representation on a number of bodies where currently they have none.

Date of next meeting

7pm, **Monday 9th December**, Corsley Reading Room

Viv Thomas
Editor

Chat Café Warminster

On

Friday 6th of December

We welcome

Andrea

MacMillan Welfare Advisor

Find out about benefits and grants available
to people affected by cancer

Join us for coffee

CANCER SUPPORT FOR YOU

The cancer support group meets every 1st & 3rd Friday of the month
between 10 - 12pm At the Athenaeum



opendoorwarminster.org



@thechatcafewarminster

Road Closure Notice

Temporary closure of C273 (Part) and UC 854205 (Part), Corsley, Longbridge Deverill and Warminster (Ref: TTRO 9959).

Notice is hereby given that Wiltshire Council has made an order to close temporarily to all traffic:

A) C273 (Part), Corsley and Longbridge Deverill;
from its junction with C270 to its junction with Dry Hill.

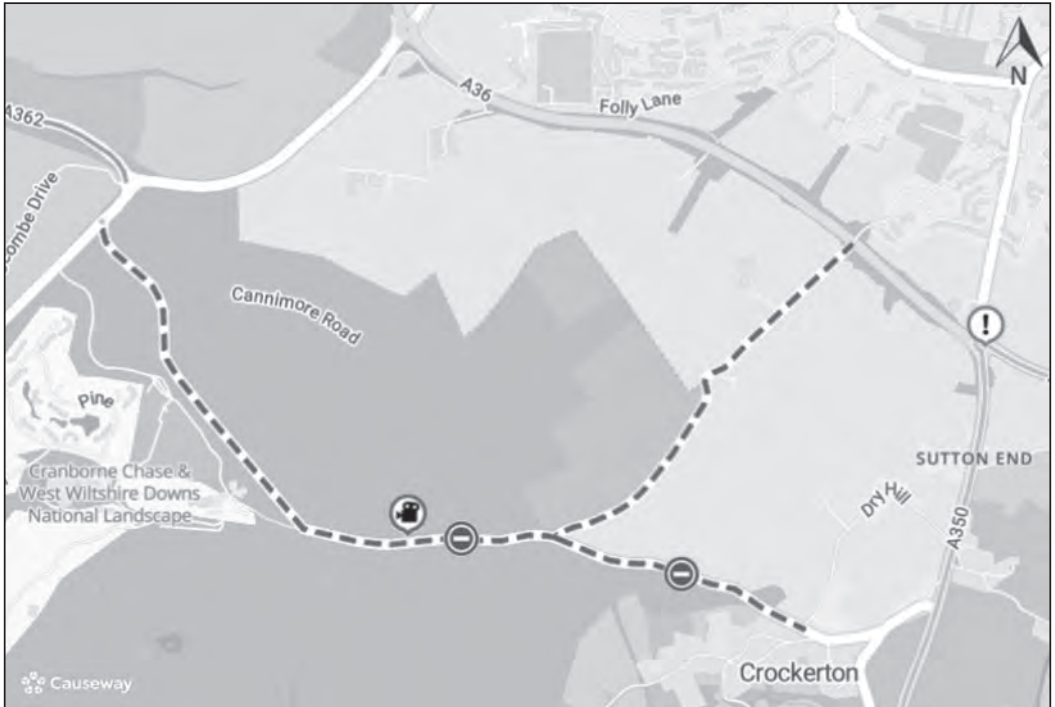
B) UC 854205 (Part), Longbridge Deverill and Warminster;
from its junction with C273 to its junction with A36.

To enable filming on location.

Alternative route: via A36 – A362 – C270 and vice versa. The closures and diversion route will be clearly indicated by traffic signs. This order will come into operation on **6th January 2025** and the closure will be required between the hours of **7 am and 7 pm for 2 days**.

Access will be maintained for residents and businesses where possible, although delays are likely due to the nature of the closure.

For further information please Lizzy Ralph on behalf of Larkin AV Ltd on 07944 170474. Highways Assets and Commissioning, County Hall, Bythesea Road, Trowbridge, BA14 8JN





E G MARTIN LTD

Heating Oil Distributors

Telephone 01373 822784

Victory Road, West Wiltshire Trading Estate
Westbury, Wiltshire, BA13 4JL

WESTERN SKIP HIRE

Telephone 01373 813132

Victory Road, West Wiltshire Trading Est
Westbury, Wiltshire, BA13 4JL



Domestic Appliance Sales and Repair Service

Domesticare

21 Keyford, Frome

www.domesticarefrome.co.uk



01373 467351

Ski Apartment – French Alps

Sleeps 6 – 150m from gondola

Well equipped – immaculate condition

For more information or to book online visit:

w. www.ski-les-cimes.co.uk

f. facebook.com/ski.les.cimes

e. lesleygolledge@gmail.com

t. 07785 524746

TEA & sympathy

Considerate catering at a difficult time

*All our food is homemade, we provide delicious teas, sandwiches and cakes
through to more elaborate options.*

We offer a truly bespoke, caring and professional service.



Telephone Kim Clark on 01373 832151 or 07843 056916

e-mail kim@teaandsympathy.uk.com

www.teaandsympathy.uk.com

Six Open Doors

Dear friends

By the time you read this letter you will, no doubt, be well into your Christmas preparations and family life will be becoming increasingly hectic. So, I would like you to take this opportunity just to pause, slow down and take a break, to think carefully what all these preparations really mean to you and your family. Because if we don't take time, we may get to 27th December and find that all we are left with is the paper on the floor, and, when you've cleared that away, an empty space.

In the Church calendar we call the four-week period from the beginning of December to Christmas day, Advent. It is not only the beginning of the new calendar in the Anglican church, but a time of waiting and preparation before we gather to celebrate the birth of Jesus Christ.

Our world today is not dissimilar to the one Jesus was born into, a world where war was raging among the people in the Middle East and beyond; a world where many lived in poverty; a world where refugees fled from oppressive governments and injustices; a world where people longed for freedom and peace. So, when the Angel Gabriel told Mary she was to have a child that would become the saviour of the world she knew their prayers had been answered. On that first day, we now call Christmas, the Son of God came into the world. He lived among us to show us God's love is for everyone, no matter what race creed or colour. It was a day full of hope, love and joy.

Joy, however, doesn't come to everyone at Christmas, many find this is the most difficult day of the year, but Jesus knows our messy world all too well, it was where he was born.

This Christmas there are many across our world who are longing in hope for a new and peaceful world. They are longing to find His love as they search to find a new home and a place of community where they feel valued and respected.

So, this year in the run up to Christmas let us take time, to pause, to reflect and most of all to pray about how we can contribute, in some small way, to the true meaning of Christmas. In St Tessa of Availa's prayer she urges us to be His hands and feet here on earth taking God's love out into our communities, towns and villages sharing it with those in need, to bring hope, joy and peace to all whom we meet.

Christ has no body now on earth but yours; no hands but yours; no feet but yours. Yours are the eyes through which the compassion of Christ must look out on the world. Yours are the feet with which He is to go about doing good. Yours are the hands with which He is to bless His people. Amen.

Oh, and by the way, don't rush to quickly to clear away Christmas, pause.... thank God for your blessings and for the fun you have enjoyed with your loved ones. May you all enjoy a happy Christmas and a peaceful New year.

Rev. Diana x

December Church Diary

1st December – Advent 1

8 am Holy Communion, Kingston
10 am Eucharist, Corsley
10 am Morning Worship, Longbridge



8th December – Advent 2

10 am Praise and Worship, Chapmanslade
10 am St Mary's, Kingston



15th December – Advent 3

11 am Matins, Corsley
10 am Eucharist, Brixton



22nd December – Advent 4

6 pm Carol Service, Corsley

24th Christmas Eve

3 pm Crib Service, Chapmanslade
4 pm Crib Service, Longbridge



25th Christmas Day

9.30 am Eucharist, Kingston Deverill
10 am Eucharist, Chapmanslade
11.15 am, Horningsham



29th December Christmas 1

10 am, Benefice Service Brixton

Dear Friends of St Margaret's

As many of you will know St Margaret's is very much in need of some restoration to the fabric of the church and we are currently awaiting the Diocese Architect's report on the state of the building, although it's contents will not be a surprise. As St Margaret's is grade 2 listed building, apart urgent repairs the majority of the work we need to carry out requires us to make an application for a "faculty" (ecclesiastical planning permission) to the Salisbury Diocese.

The Diocesan website provides the background and context: <https://www.salisbury.anglican.org/supportforparishes/care-of-churches-buildings-and-churchyards/>.

Currently Corsley members on the PCC (Parochial Council) are in short supply so we are looking for help with this administrative task. If anyone has the time, energy and talent for such a job we would be very grateful if they can please come to our aid and contact Di Britten (dianabritten@69gmail.com) or Amy Holley (holleyamy@gmail.com) and work with us to make the necessary applications.

Thank you

Church and Community Events in November

St Margaret's Christmas Tree Festival

6th, 7th and 8th December (refreshments available)

Christmas Coffee Morning amongst the Christmas Trees

Saturday 7th December, 10.30 am to 12.30 pm, St Margaret's

Carol Singing in Chapmanslade

Tuesday 10th December, 6 pm

NEW monthly Village Coffee Morning

Wednesday 4th December, 10.30 am to 12 noon, Corsley Reading Rooms
(organised by the Lite Bites team)

Crafternoon

Wednesday 11th December, 3 pm to 5 pm, Three Horseshoes, Chapmanslade

Recent Parish Events

Baptisms

A warm welcome to Trixie and Jesse Halman who were baptised on the 6th November at St Philip & St James', Chapmanslade

Funerals

Mike Bird, late of Lyes Green, Corsley (14th November)

Dennis Barnard, Chapmanslade (19th November)

Our thoughts and prayers are with the families at this difficult time.



Church and Community Coffee Mornings

Third Thursday of each month

10 am to 12 noon

The Three Horseshoes, Chapmanslade

Parish Contacts for Corsley and Chapmanslade

First contact for anything related to Corsley and Chapmanslade please contact Sue Fear at suefearpcc@gmail.com

Lay Pastoral Assistant	Claire Tanner	01985 218099
Pastoral Visitor	Barbara Hughes	01373 832273
Churchwardens: St Margaret's St Philip & St James	Vacant Ian Buick	01373 832318
Deputy Churchwardens: St Margaret's: Currently St Philip & St James':	Vacant Janet Aylesbury	07808565878
PCC Secretary	Sue Fear	01373 832074
PCC Treasurer	Ian and Janet Buick	01373 832318
Tower Captain	Mike Attenborough	01373 832777
Electoral Roll	Di Britten	01373 832515
50/50 Club	Sue Fear	01373 832074
Time to Think	Trudi Hopkinson	01373 832393
Lite Bites Lunches	Maureen Willcox	01373 832171
Benefice Administrator	Vacant	
Benefice Webmaster	Mike Palmer	mjp.mikepalmer@gmail.com
Safeguarding Officer	Sarah Humberstone	cleyhillbeneficeoffice@gmail.com

Copy for Six Open doors should be sent to Di Britten at dianabritten69@gmail.com

ILES & VINCENT

FUNERAL SERVICES

WARMINSTER'S ONLY INDEPENDENT FUNERAL DIRECTOR



Classic and traditional funeral ceremony, small and intimate service or no service at all with a direct cremation, we are here to help, guide and support you every step of the way with sensitivity, experience and empathy.

24 hour professional & caring service

The Cornmarket, Warminster, BA12 9BX
01985 220161 (24 hours)
info@ilesandvincentfuneralservices.co.uk

Mobile Foot Clinic



Jana Twinney

Dip FH MCFHP MAFHP

Long, Thickened, Ingrown or Fungal Nails,
Callus, Corns, Cracked Heels,
Athlete's Foot + Diabetic Foot Care,
Massage and Foot Care Advice

**Registered member of the British Association
of Foot Health Professionals**

Fully insured and experienced
Based in Frome and surrounding area

Please phone or email for an appointment

jana.twinney@gmail.com
07922 679 638

Forget-me-not

• GARDENING SERVICE •



Weeding, pruning, planting,
fence painting, etc

01373 464416

07890 850465

Magical Maids

Professional cleaning services specialising in
Office and Domestic Cleaning
Holiday Lets · End of Tenancy
Sam 07581 896600

psmagicalmaidscleaningservice@gmail.com

SALES | LETTINGS | PROPERTY MANAGEMENT

LET'S WORK TOGETHER!

Exceptional results delivered
through exceptional customer
service.


JACK FLOWER PROPERTY

Powered by eXp

 +44 7886 214323

 jack.flower@exp.uk.com

 www.jackflower.exp.uk.com

 jackflowerproperty



Chapmanslade Parish Council

Parish Council Briefing

Councillor Ian Curtis reports on the main issues from the meeting on 8th November

The meeting began with a time of silence to respect the passing of Dennis Barnard, and to remember his contribution to Chapmanslade throughout his life. This included serving as a parish councillor for 42 years and as the Chair for 20 years.

Pavements

A member of the public raised concerns about the safety of the pavements throughout Chapmanslade – suggesting that their poor condition was limiting the extent to which residents walk through the village. Councillors discussed this agenda item at length, given the longstanding concern. One councillor highlighted that different ownerships/ rights complicated the consistent quality – with some driveway sections being in the ownership of householders and the linking sections Wiltshire Council. Councillors agreed the need for action but concluded that an approach to the Local Highways and Footpaths Improvement Group (LHFIG) was unlikely to be successful in securing funds. They did, however, support a proposal from Bill Parks (County Councillor) that he will approach Highways Department and request a Highways engineer undertake an inspection of the pavements. He did, though, caution that the guidance for the maintenance of pavements set the bar low for acceptable condition – limiting this to risks of trips and slips. The member of the public said that she would ask residents to highlight the worst/

most dangerous sections with a Facebook post. Ideally, broken pavements should be reported to Wiltshire Council via the MyWilts App which will provide the evidence to the Highways Department and help prioritise sections in need of maintenance/ improvement.

Planning applications

Two planning applications, on which the Parish Council had objected, were decided prior to the meeting:

- Planning Appeal Decision:
Appeal Ref: APP/Y3940/W/24/3337482
Sienna's Valley Farm, Huntenhull Lane, Chapmanslade. The appeal has been allowed and planning permission granted for a rural worker's dwellinghouse at Sienna's Valley Farm, in accordance with the terms of the application and subject to conditions.
- Planning Decision:
Application/2024/04800. Demolition of stables and construction of one self-build sustainable dwelling with associated works and change of use of land to C3 (resubmission of PL2022/09808 and PL/2022/03190. Approved with conditions at Western Area Planning Committee on 6th November 2024.

The Parish Council considered one planning application:

- **Application NPL/2024/08591**. Full Planning Permission. Erection of nine

dwellings, demolition and associated works (resubmission of PL/2023/05349. Former commercial nursery, Barthers Farm, High Street, Chapmanslade.

Councillors noted that this had been submitted at the same time as appealing a similar planning application (PL/2023/05349), to which the Parish Council had objected.

The Parish Council were unanimous in objecting to this new application. The main reasons being that the site falls outside the development boundary; the housing quota for Chapmanslade has already been met; the houses proposed would be unaffordable to those from the village seeking a first

home; and a number of roads and highways concerns.

LHFIG

Following an earlier application, the latest LHFIG meeting has agreed that a highways engineer will undertake a survey of safety concerns on the A3098 to the east of the village. This will take particular account of the Short Street junction.

Next meeting

The next meeting will be at 7.30pm on **Thursday 12 December** in the Village Hall – members of the community are very welcome to attend.

Central Government

Winter Fuel Allowance

The deadline to apply is fast approaching...

You can get a Winter Fuel Payment for Winter 2024 to 2025 if you were born before 23rd September 1958 **and** you receive at least one of the following:

- Pension Credit
- Universal Credit
- Income-related Employment and Support Allowance (ESA)
- income-based Jobseeker's Allowance (JSA)
- Income Support
- Child Tax Credit
- Working Tax Credit

**The deadline to apply is
Saturday 21 December**

Pension Credit is an important benefit but is often overlooked. The Government estimate there are 880,000 households eligible for Pension Credit that have not yet claimed it. This means many pensioners are missing out on £3,900 a year (the average Pension Credit award). Pension Credit is designed

for pensioners on a low income. It acts as a 'gateway benefit', meaning it can open the door to additional benefits such as:

- Winter Fuel Payment
- Housing Benefit
- Council Tax reduction
- NHS health costs (prescriptions, dental treatment, glasses, for example)
- Warm Home Discount Scheme
- Cold Weather Payments
- Free TV licences for over 75s.

While 1.4 million UK pensioners do claim Pension Credit, there are many that don't even apply. This could be because they think the process is complicated or aren't sure they would qualify. In fact, the application process is quite straightforward, and you can check in advance whether you're likely to succeed. Visit **www.gov.uk/pension-credit/how-to-claim**

GARDENER

Mowing . Maintenance
Experienced
terrybaxter4@sky.com
07908 826559



ATM FLOORING

CARPET AND FLOORING SPECIALIST

Local business with 27 years experience.

Supply and fit carpet and flooring.

Servicing Westbury and surrounding areas.

Free quotes, measuring and sample service.

☎ 07970 031066

🌐 www.atmflooring.co.uk

✉ atmflooring@hotmail.com

BUSY BEES PRE-SCHOOL SPACES AVAILABLE FOR SEPTEMBER

- Term-time only 8am to 5pm,
Monday to Friday
- 2-4 year-olds
- Government funded hours for
2, 3 and 4 year-olds



Busy Bees Pre-School
High Street, Chapmanslade, BA13 4AN
Please contact us on 07749 257608
busybeespre-school@hotmail.co.uk
OFSTED Reg:145873 Charity No:298660

hawthorn horticulture

Claire Noble RHS Level 2 qualified Gardener
Maintenance, advice, planting, pruning, planning, weeding
claire@hawthornhorticulture.co.uk
hawthornhorticulture.co.uk 07732 887802



Clearwood Home & Garden

Home & Garden Maintenance

Painting & Decorating
Plumbing & Repairs
Carpentry & Small Building Repairs
Lawn & Hedge Cutting
Paving, Decking, Fencing
& more

Call Ben on 01373 832984 / 07882 353750

All types of Home Repairs. No Job Too Small. Discounts for Pensioners.





LAST REMAINING OFFICES AVAILABLE!



We currently have some beautiful offices available to rent at Manor Farm, Corsley. This rural workspace offers a serene work environment for up to 8 occupants. Nestled within the breath-taking surroundings of the historic Elizabethan Manor and conveniently located between Warminster and Frome, with Westbury train station just a 10-minute drive away.

Get in touch today to book a viewing!

Manor Farm Offices, Corsley, Warminster BA12 7QE
Tel: 01373 486 800 | Email: landlord@heywoodhouse.com
www.heywoodhouse.com/manor-farm-corsley

Corsley WI

November news

Patricia Sharrocks rounds up the November meeting



Sadly our 'Bike ride to Santiago' with Alison Rossiter had to be postponed but we enjoyed an interesting talk given by Stuart Barnes, a member of The Shire Horse judging panel.

Stuart talked about carthorses which he first encountered as a child on his grandparents' farm in the Cambridgeshire fens. He spoke briefly about his grandfather's service in World War 1 as a 'farmer's boy' working with heavy horses to provide heavy equipment to the troops. He also spoke of the move to mechanisation on farms after World War 2 as tractors were increasingly used and many heavy horses sent to slaughter.

People often use 'Shire horse' as a blanket term for carthorses but it is, in fact, a breed. There are four breeds of carthorse in Britain: the Shire horse, the Clydesdale, the Suffolk Punch and the Percheron. Percherons are a French breed which became popular in Britain during the 1920's. They don't have the 'fluff' around their hooves which made them more practical on muddy farmland.

As well as sharing his enthusiasm for these horses, Stuart had also brought along some artefacts; harnesses and bits which gave a real indication of the size of the animals, and some very delicate horse brasses, worn thin through use. They would have been used to decorate the horse harness for show purposes or sometimes on the harness of heavy draught horses working in towns.

Today carthorses are a big attraction at shows and are sometimes used for promotional purposes, extensively so in the United States where they are very popular.

We are very grateful to Stuart for stepping in at the eleventh hour and giving us such an interesting talk.

In December we will meet in the Reading Room for a Christmas meal. We look forward to welcoming new members and guests in the New Year.

For more information about Corsley WI please contact Alice Helliar on 07989 339632.



Sewage system update

Selwood Housing

Do you live at the Heathway, Corsley? Then read on...

I would like to thank everyone who has provided me with the amount they are paying to Selwood Housing for their sewage system.

Based on the figures provided, we now have a range of between £590 and over a thousand pounds a month.

Bill Parks, who has been supporting us, has now spoken to Verena Buchanan from Selwood Housing who has written a formal letter to him (but not the households) in which she explains that when the homes were transferred to Selwood Housing there was a figure for each home that was passed over and this has simply gone up over time at whatever rate they choose each year. Furthermore, the contracts they agreed during this transfer said they could just charge households what they wanted; they therefore have not even looked at

the variations (and don't seem to be interested in doing so) as they say they are losing money providing the service. This would explain the wide variation in prices as compound interest would increase the variation over time. It should also be noted that the price charged includes a substantial amount of service charge for managing the system.

We have requested a meeting with her at Heathway as much of the information in the letter was factually incorrect. We have assumed this because whoever provided her the information has never been out and looked at how the system is put together.

We will keep everyone informed as to how the meeting goes.

Neil Carpenter



Corsley Fayre
Annual General Meeting
7.30 pm, Wednesday 4th December
Corsley Reading Room
All welcome!
Come and have your say on how the Fayre could look in 2025

Deedle's Pets



DOG GROOMING AND PET SERVICES

SERVICES

Dog Grooming
Dog Waking

Pet Sitting
Pet Supplies:
Natural dog treats & pet accessories

Emmi Pet
Teeth Cleaning

Email: deedlespets@gmail.com

Phone: 07830066030

www.deedlespets.com Shop
@Deedle's Pets Social

Contact

OFF THE HIGH STREET HAIRDRESSING

UNISEX HAIR SALON
OPENING IN APRIL 2022! IN THE VILLAGE OF
CHAPMANSLADE.

AMY PRATT WILL BE MOVING HER TALENTED SELF
AND SALON, PREVIOUSLY TREVOR AND JON IN
TROWBRIDGE TO THE LOVELY VILLAGE. AMY HAS
OVER 20 YEARS OF EXPERIENCE.

FOR ALL NEW ENQUIRIES PLEASE CALL AMY ON
07740799341

THE NEW SALON ADDRESS IS 2 PEDLARS GROVE,
CHAPMANSLADE, BA13 4AZ.



Do you need a plumber? Call...



Paul Antell Plumbing

07890 366832

01373 467427

Professional, reliable, friendly and local
paulantellplumbing@talktalk.net
www.paulantellplumbing.co.uk

Little Cuckoo's Pre-School

Lyes Green, Corsley, BA12 7QH

Corsley village pre-school, set in the heart of our
beautiful countryside with a vast outdoor space.
Dedicated for children aged 2-5 years

Monday-Friday during term time

OFSTED rating 'Outstanding' February 2023!

Government funding for eligible 2, 3 & 4 years



Please contact Hayley McMahon or
Sam Keller on 07925 549763

find us on Facebook or visit www.littlecuckoos.co.uk

Registered Charity Number 1064800

JESSICA CHURCH Chartered Physiotherapist

Your local physio in
Corsley Heath.

www.jessicachurchphysio.co.uk

physio@jesschurch.co.uk

07711256662



hcpc
registered
www.hcpc-uk.org

Seasoned Logs

Hardwood, softwood, barn dried, kiln dried

Kindling and stacking service

All with free local delivery

Tel/text Garry on 07801 179917

Standard load £160 for 1.6m³ or 700kg

All our timber is ethically sourced from local woodland
and is fully seasoned before delivery

Please check out

“woodlandworks”

on Facebook or Instagram

Mrs B's Caring Catering Ltd

Celebration parties

Funerals

Weddings

Finger buffets

Boxed lunches

Lunches

Dinners

**with waited, buffet or
delivery only service**

01373 452593

office@MrsBsCaringCatering.co.uk

www.MrsBsCaringCatering.co.uk

Unit B1 Southgate, Commerce Park, Frome, Somerset BA11 2RY



Sharon's Foot Clinic

SAC Dip FHPT SAC Dip FHPP



Fully insured and highly trained

For the professional treatment of:
Corns · Callus · Cracked Heels
Athletes Foot · Fungal Infections
Thickened Nails · In-growing Nails
Diabetic Foot Care · Verrucas
Nail Cutting · Nail Reconstruction

Contact Sharon on

01373 836734 or 07728 200402

Clinic appointments at

12 Sunny Hill, Nunney, BA11 4ND

Home visits also available

Wonderful Walks

A Christmas Treat!



We're off to Mantova (Man-toe-vah), south of Lake Garda in Italy, as a Christmas treat – on a Weston-Super-Mare Bakers Dolphin gold coach, with drivers Richard and Ryan. These two have been busy all week, ferrying passengers and dealing with emergencies. Gill Redman's lost in Sirmione? Richard found her! A passenger's Wi-Fi won't work? Ryan sorted that!

Today's town guide is Lorenzo, waiting near Mantova's St. George's Castle and keen to give us a ninety-minute tour of this medieval walled town. The castle looms dark and menacing ahead, built for the first Duke of Mantua (Italian spelling) after 1328, and lived in until the time of Ludovico Gonzaga in 1460, who turned the castle and nearby buildings into a full Ducal Palace. Ludovico and his wife, Isabella d'Este, employed renowned artists from all over Italy to decorate and embellish Mantova.

Guilio Romano, once a pupil of Raphael and employed by the Vatican Popes, spent years working here. The Gonzagas weren't in the same league as the Medicis of Florence or the Borgias of Rome, but Ludovico and Isabella were leading lights of artistic design in their time. Lorenzo walks us along a narrow alley that opens into a huge courtyard, embellished with a paved design in stone.

Eek - the courtyard surface is constructed of pebbles; my sciatica and arthritis won't cope with that! This 'square' is part of St. George's Castle Museum and, luckily for me, there's a later, fifteenth-century, covered-and-decorated walkway built right round it and paved with flat brown bricks; hooray! To our left is the heavy original castle keep, while ahead is St. Barbara's Church, built for Ludovico and Isabella as their family church. Lorenzo guides us round the square and into the church for a few minutes, but, when we leave, it's by a side



door, so I've no idea where we are now. I've been rescued once this week, Lorenzo, so it'll be your turn if I get lost again!

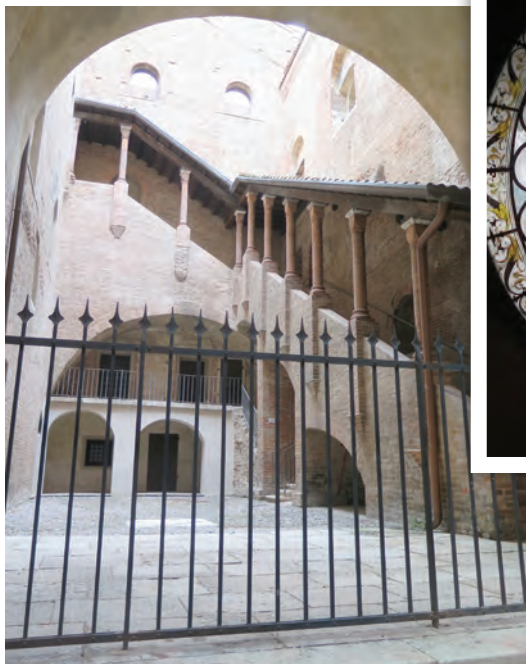
The Gonzagas were a minor Italian dynasty, true, but they had an internationally-famous horse stud here – and one of their customers was Henry VIII. Were the horses heavyweight hunters? I wonder that because Henry once boasted, to Gonzaga agents, how 'stout' he was and asked if their master was as well-built. The answer was no, possibly because the Gonzaga family had an inherited deformity; some were hunchbacks. Some were also military leaders and heroes, because I've just seen two busts of Gonzaga men who died in the 1930s, both awarded Gold Medals for bravery. The church's side door opens onto another square, this time called Piazza Sordello.

Have you ever heard of 'Sordello'? No, nor me. What about Baldasar Castiglione? He wrote a book called 'The Courtier', about courtly behaviour, 1500s style; I studied that at Open University, way back in the 1980s!

'Sordello' was a poet, it seems, mentioned in Alighieri Dante's famous 'Divine Comedy'; he was also a friend of Castiglione, whose house is still somewhere here. Today is market day and some people look keener on studying that, than on Mantova's history! Again, Lorenzo guides us round the perimeter and ooh-. Look at the cream-stoned arched doorways here, with thick wooden doors; they're wide enough to be stables and mews, surely? Can you see the delicate artwork above the doors, too, with what may be griffons? This square is Piazza delle Erbe or 'Herb Square' and to

our left, the fifteenth-century brown-brick buildings belong to the Palace of Reason. That means 'High Court of Justice', and the next decorated archway and alley leads us past its elegant main staircase. We emerge from that narrow space into Piazza Mantegna, with more market stalls; Andrea Mantegna was another famous Vatican-employed artist, lured here by Ludovico and Isabella. To our right is St. Andrew's Church, while on our left is an older, rotunda, church with the Torre dell'Orologio, the Clock Tower, beside it.

Lorenzo marches us into St. Andrew's Church and mentions the rose window, but he looks ready to move on; out in Mantegna Square again, he finishes the tour and we hand over tips. It's time to explore the main street ahead, lined with shops and restaurants. 'Granny's Lasagne' is my order at a café and it's lovely, but my 'English tea' is a tiny espresso cup, half-filled with something



that may contain tea, but no milk. Ugh! I head for the coach stop, passing a funeral service advert on the way – the first I've ever seen in Italy. Merry Christmas, everyone! Keep walking, as much as you can; it's good for us all..!

Chapmanslade Motor Services

Vehicle repair
and servicing

Brake
specialist

MOT preparation
and repairs



Batteries
Exhausts
Tyres



Quality service at competitive rates

FREE ~ wheel balancing and tracking with new tyres

FREE ~ courtesy car

Electronic diagnostics available – most makes covered

Green Farm Industrial Estate, Chapmanslade

01373 832188 or 07711 256927





01373
455911

CLEANING & MAINTENANCE 2000 LTD

OUR SERVICES INCLUDE

- Domestic Cleaning
- Commercial Cleaning
- Upholstery Cleaning
 - Carpet Cleaning
- One off Spring Cleans
- Garden Maintenance
 - Home & Garden Clearance

 www.busybees2000.co.uk 
info@busybees2000.co.uk

**JOHN E S JONES
& SON LTD**

**GENERAL
BUILDER**



Carpentry, painting and
decorating, extensions, uPVC,
facias and gutters, fencing,
decking and patios

Please call

01373 832600

07795 177920

07810 646335

Rose Knight



Dog and cat
minding service

01373 464904

07773 435254

knight_rosemary@sky.com



Chloe Coulson AVON

representative in Warminster and Corsley

Please text me on **07591 080237**

if you are interested

M W Garden Services

20+ years experience

A tailor made service for all
types of garden maintenance

Insured and CBI's checked

mark22.weaver@mypostoffice.co.uk

Telephone 01373 832854

Mobile 07921 818452



**Shake off those pounds and
dance yourself fit.**

Chapmanslade Village Hall
Monday 7.30pm - 8.30pm

Longbridge Deverill Village Hall
Thursday 7pm - 8pm

For all levels of fitness and
NO experience needed.

For more information please contact
Amy 07830 119032

JERRY RAYNER ●●
boiler maintenance ●●

01985 841461 or 07775 755981

FOR SERVICING AND BREAKDOWN
OF OIL BOILERS

also AGA and RAYBURN

- Competitive rates
- Friendly, helpful and efficient
- Call now for a quote

Wren House

Residence for the retired and elderly

Wren House in Warminster is a long-established, elegant retirement home, specialising in individual care in gracious surroundings. Having just thirteen rooms, each with a private bathroom, we are able to offer the ambience of a family home, together with caring staff and the facilities to enable our residents to enjoy their later years with dignity.

Wren House serves fresh, locally-sourced, home-cooked food. Residents enjoy a varied activity programme which includes a gardening club and our own choir.

Mrs Ellie Simmonds

Wren House Ltd, 32 Vicarage Street, Warminster, BA12 8JF

Telephone 01985 212578

wrenhousewarminster@hotmail.com

www.wrenhousewarminster.co.uk

Whitbourne Chapel

“I am the Lord’s servant... May it be to me as you have said.” Luke 1:38

Saying Yes to the Lord Jesus

Luke tells us that Mary received the greatest honour God can pay us; He choose her to be the mother of His Son. She was probably a teenager at the time and had done nothing to deserve such favour. Yet a simple response spoke deeply of her humble faith in God. “I am the Lord’s servant... May it be to me as you have said.” Without hesitation, Mary said ‘yes’ to God’s plan to take over her life.

Saying ‘yes’ to God usually involves sacrifice. It did for Mary, who endured the doubts of her fiancé Joseph and the scorn of the neighbours who saw that she was pregnant before her marriage. Saying ‘yes’ meant bearing the pain of childbirth, it meant fleeing to far-off Egypt to protect her baby from King Herod’s soldiers – and it meant raising a child she did not completely understand.

Most of all, it meant watching her son die on a cross. Our last glimpse of Mary, in Acts 1:14 though, shows her among the Disciples after the Ascension, waiting with them and other women, praying for the Holy Spirit Jesus had promised.

Mary began her relationship with the Lord Jesus by holding his tiny form in her arms. In the end she realised she must let the Lord Jesus hold her. He was not only her child, he

was her Lord; to that, too, Mary said ‘Yes’.

Life Question: To what is God asking you to say ‘Yes’? What sacrifice may be involved? The three characters we have looked at today, have one thing in common; they were all willing to be servants of the Lord. May the Lord, through the power of his Holy Spirit, enable us to be servants of his Grace and His matchless Gospel, to be blessed that we might be a blessing to others. May the Lord Bless us all this Christmas time.

Trevor Brain

Occasional Preacher at Whitbourne



Remember

The cards with robins and snow scenes are out again. Sadly, they have nothing to do with the celebration of the birth of the Saviour of the world.

Our Speaker at the Chapel’s Remembrance

Service told us of a battle for a Bridge at Arnhem; 10,000 soldiers were told to defend the bridge at all costs. There was a promise to send reinforcements. Some 7,000 men lost their lives. It was 1944 and there was a promise to remember them.

On Armistice Day 1945 a soldier asked if there was a place of remembrance for the men of Arnhem. There was not.

A bit like Jesus at Christmas; no place for Him.

Please remember:

If you need help or simply someone to talk to, ring 07980 013685 and we’ll do our best to help you. Otherwise, visit our website www.whitbournechapel.org.uk or google ‘Whitbourne Baptist Chapel’.



Local Electrician

All Domestic and Commercial Work Undertaken
NAPIT approved Part "P" registered installer
Electrical Testing and Thermal Image reports
Electric Vehicle Charger Points installed

www.fushi-electrical.co.uk

Call us on: 01749 850769

Email: enquiries@fushi-electrical.co.uk



Unit 7 The Old Timber Yard, Trudoxhill BA11 5DG

DAVID EDMUNDS & CO

ACCOUNTANTS & TAX CONSULTANTS

*Specialists in the self-employed, small and medium business and self assessment.
Preparation of accounts, VAT, PAYE, income tax and corporation tax returns.*

*Personal, friendly service
Evening appointments by arrangement*

Home 01373 832430



allsorts OF FENCING

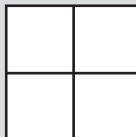
Your local Fencing Specialist

Stock Wire / Post and Rail / Close board
Decking / Patios / Gates / Sheds / Pergola

www.allsortsoffencing.com

01373 832339 / 07710 180551

Also: Topping of Fields and Paddocks



White Horse Windows Ltd

Windows, Doors,
Conservatories and more...

Local company, exceptional standards

10 year guarantee

*Windows Fascia & Guttering
Doors Conservatories*

CERTASS Registered

For a free quotation contact Ryan on

07909 441442 or 01373 302594

ryan@whitehorsewindows.com



KB Landscape

30 years in landscaping

Phone

01373 832371

Mobile

07951 297173

Kevin Brixey - for quality and experience

5 Red Cottages Corsley Warminster Wiltshire BA12 7PS

Landscaping
Patios and paths
Turfing and seeding
Brick and stone walling
Decking and pergolas
Block paving
Gravel drives
Pond work
Fencing

St Philip & St James' Church, Chapmanslade

Act of Remembrance

Terry Rose reports on a very special service

A special Act of Remembrance was held in Chapmanslade on Sunday 10th November to dedicate the names of two servicemen from the village who lost their lives 80 years ago in WW2 being added to a new bronze plaque on the War Memorial. The Reverend Marian Curtis officiated. Wreaths were laid by Captain Phil Holihead RN (Retd), Chair of Chapmanslade Parish Council, David Heyward from Frome on behalf of the family of the two servicemen, and Police Inspector Joe Sadowski Warminster Area Neighbourhood Policing Team. Chapmanslade Brownies and Guides made their own



Above, left to right: Reverend Marian Curtis, Richard Ward (Royal Marines Band), Captain Phil Holihead RN (retd), (Chair Chapmanslade Parish Council), Andy Clark (Chair Warminster RBL), and Colin Wilkinson



environmentally friendly displays. Brigadier Alasdair Wild (Retd) read the Kohima Epitaph.

The presence of two Warminster Royal British Legion standard bearers as well as Royal Marine bandsman Richard Ward, who played *The Last Post and Reveille*, made the service even more special for the assembled congregation of nearly 100 people.

The service was followed by warming refreshments in St Philip & St James' Church where there was an exhibition by the History Group

continued...

...continued

about the two men; Lance Corporal Wyndham Carter, 2nd Battalion Wiltshire Regiment, and Flight Sergeant Kenneth Chalk, 77 Squadron, a Rear Gunner in a Halifax bomber. An amazing 'Lest We Forget' cake, baked by parishioner Jacqui Oakham, was enjoyed by all.

Terry Rose from Chapmanslade History Group said that it had taken eight months of dedicated work to get approval to add the new plaque to the Grade II Listed War Memorial (The Cross) - which could not have happened without the full support of the Parochial Church Council, Chapmanslade Parish Council, family members of the two men, who were related, as well as the community at large.

As an example of community involvement, Terry mentioned that Revd Marian and himself were delighted to be invited by Head Teacher, Rob Cottrell, into Chapmanslade Primary School to give a presentation to Key Stage 2 children about the history of the War Memorial, the two servicemen, and their family life in the village. "The Children were really interested, asking thoughtful and challenging questions. Their teachers asked them to write poems and paint pictures which were displayed in the church. Later, some of the children dressed the area around the War Memorial with poppies", said Terry.

Terry wishes to thank everyone involved in this community initiative, including Charlotte, Ben and the staff of The Three Horseshoes pub, Chapmanslade who hosted all the History Group planning meetings, serving tea and coffee.

Terry Rose

MyWilts App Update



The MyWilts app will soon be updated with some new features and a new look and feel.

The MyWilts app is the quickest way for you to report issues to the council, including highways defects, weather emergencies, fly-tipping and overgrown vegetation.

If you have automatic updates turned on there is nothing else you need to do to start using the new version of MyWilts, when it becomes available. If automatic updates are turned off, simply visit the App Store for Apple devices or the Google Store for Android devices to initiate the update. Please note, when the update has taken place previous versions of the app will no longer function and you will need to visit your app store to update the app to continue using it.

You can continue to use your previous details to login and report issues. Cases raised

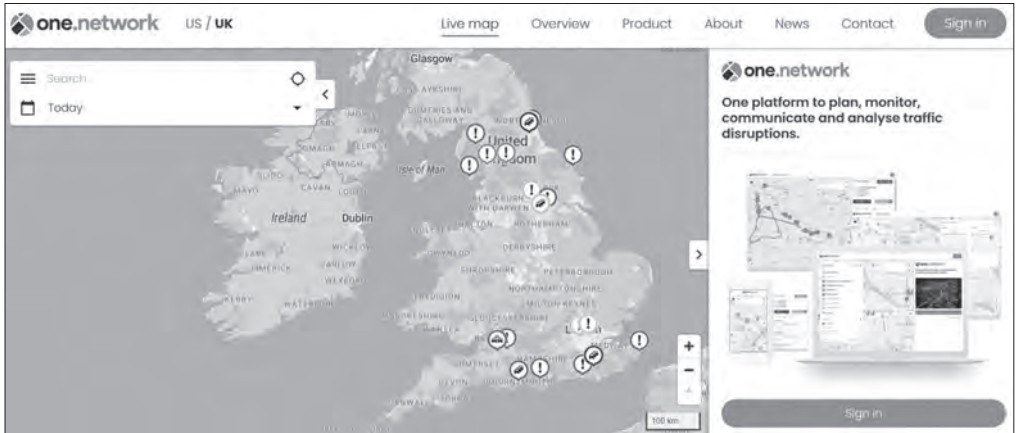
in the previous version of the app can still be viewed.

The update will improve the user experience and provide some new functionality:

- Improved user interface, better navigation and improved look and feel
- Improved 'cases' section to easily view and manage reported cases in one place
- Ability to save partially complete case submissions as draft, even when offline
- Map view of all cases
- Improved mapping and offline reporting
- Improved image upload feature
- Bug fixes
- Improved design of several highways forms

If you do not have a smartphone that can support the app or do not wish to use your phone, the MyWilts online reporting webpage is still available.

Receive highways updates straight to your phone



Did you know that you can see all the current and upcoming roadworks in your area on **one.network**?

You can also set up email alerts so you can be told when there are roadworks near you.

Wiltshire Council do not manage permits on the A36, A3030 or M4.

These are published by National Highways and therefore WC do not have any control over the information.

Wiltshire Council's extra investment in our highways each year, for three years



£10m
for repairing our roads and filling potholes



£1.7m
on drainage schemes to prevent flooding



£0.33m
for gully cleaning to prevent flooding



£7m
on life-extending highways resurfacing



£0.51m
for litter and fly-posting prevention, removal and enforcement



£0.2m
to re-paint white lines and road markings



£2m
on road safety schemes



£0.5m
to replace road signs



£0.15m
to tackle fly-tipping



Wiltshire Council

A view from over the hedge...

Countryside Matters

Judith Helliard reflects on our favourite subject – the weather, and our least favourite – inheritance tax

As I began to write, on 18th November, the previous three weeks had been grey but with hardly any rain and temperatures up in the mid teens, which was really helpful in that cows could still go out to graze, keeping them fit and saving on winter feed. Today, though, it's all change with heavy rain again and a forecast of cold weather tomorrow with the chance of snow.

Today, 19th November: as promised, the temperature sunk down to 5°, windy, raining with slight flurries of wet snow.

Today saw thousands of farmers and farm workers leave their farms to head to London to show the Government their concerns regarding the proposed idea that on the death of a farmer, death duty should be paid on the value of land, buildings and dead and livestock

The age-old tradition of handing the farm onto the next generation intact will no longer be an option, as death duty will be paid on all properties over £1M.

The old saying for many generations of farmers has been that we are but stewards for the next generation of farmers, but few will be able to hand on their family business without selling off land which will make the business unviable. We wait to see if the Government will at least listen to those who live and work in the countryside.

December brings its joys of family gatherings, Christmas celebrations, traditional and new, Carol singing in the churches and

in the local pubs and its many other ways of seeing out the old year.

On the farm, the daily care of stock continues 365 days of the year.

The 21st December is the 'shortest day' with the least amount of daylight hours.

As the bells of St Margaret's ring out to welcome the new year, we look back on all the happenings of 2024 and look forward to a happy and healthy year for friends and family wherever they are.

Rainfall for October 2024 – 104.4mm

Judith Helliard

Answers to Bob's Bafflers

- 1 Sandringham (St Mary Magdalene)
- 2 A lump of coal (I had a few of them!)
- 3 Krampus which is half goat/half demon)
- 4 Gabriel
- 5 6th January
- 6 Indian Ocean
- 7 Cinderella
- 8 Olaf
- 9 Silent Night
- 10 Hanukah
- 11 The Snowman
- 12 Cupid

Corsley Reading Room

‘Village hall’

Liz Garrett, Secretary, reports on the latest happenings at the hall

Christmas Fair

Thank you to all who supported the Christmas Fair, especially the WI members and others who provided yummy cakes. It was a free entry event but we raised money on the raffle and refreshments. Hope you had a good time.

Film Club

By the time you read this the second film club session will have run. The licence conditions don't allow us to advertise what film will be shown but you can email

films@corsleyreadingroom.org.uk
for a list of films and more information.

A year's membership costs only £10 or you can come along as a guest for £5. Don't forget to bring your own drinks and nibbles. Next film night will be Monday 27th January.

Upcoming event

The Lite Bites Christmas lunch will be on Wednesday 18th December.

Developments

The work on the women's toilets is now almost complete: we will replace blinds and accessories in coming weeks. The floor joists inside the back door have been replaced, so we hope you've noticed those improvements.

As the next stage of building refurbishment, we are delighted to report that our grant application to SSE grant programme called 'Powering Communities to Net Zero', has

been successful. This will allow us to install recessed photovoltaic panels on the kitchen and lower room roofs. Those panels with associated batteries and emergency power supply will provide more sustainable power to the Reading Room and support our community in the Parish Council's Emergency Plan. (See website for development updates)

We would also like to thank the Parish Council for providing a grant to support Lite Bites and the Coffee morning. This money will be passed to those who run those events underwriting some of the background costs for these popular community events.

Annual General Meeting

We held our AGM as The Bridge was going to press, and I'm pleased to report the appointment of two new Committee members. David Sharrocks is taking on the role of Treasurer and Mary King has also joined the committee. Both will be applying to the Charity Commission to become Trustees.

Caroline Hutton presented the Annual Accounts (available on our website) and we thanked her for being our Treasurer over the last two years.

We are still without a Chairperson and would also like to recruit someone who could look after publicity for our work and events.

Anyone interested please contact me (lizi.garrett@btinternet.com) or any of the committee members.

Booking the hall

Please use the website form or email crrbookings@gmail.com. Corsley residents get a discount on our published prices!

While we do not have a Chairman at the moment emails to this address come to the secretary Liz Garrett:

chairman@corsleyreadingroom.org.uk

Trustees: Chris de Groot, Claire Firman-Ford, Liz Garrett, Caroline Hutton, Jackie Jasper, Mark Richards (Jamie and Charlie Owen look after bookings)

See website
www.corsleyreadingroom.org.uk
for up-to-date information

Thermal imaging cameras

Available to borrow from Wiltshire Council libraries

You can now borrow thermal imaging cameras from Wiltshire Libraries to check for heat loss from your property to inform home upgrades and save money on energy bills.

The cameras use infrared technology to detect where heat is escaping from the home, highlighting areas like gaps around doors, windows, letterboxes, and plumbing fixtures connected to the outside. All information can be found on the Wiltshire Council website.



Local organisation adverts

£2.50 per month for a small boxed advert or £8 for a full page. Full page adverts are allocated depending on space available and cannot be guaranteed. All monies must be at one of the two drop-off locations (Barbers Plant Centre or Acres Supply Garden Centre) by **4pm** on the **19th** of the month. Please note: no cash, no advert!

Trade advertising

Annual trade advertisements (12 issues, when space is available)

1 space	(69mm wide x 33mm high)	£24
2 spaces	(69mm wide x 66mm high)	£47
3 spaces	(quarter page - 69mm wide x 100mm high)	£68
4 spaces	(138mm wide x 66mm high)	£85
6 spaces	(half page - 138mm wide x 100mm high)	£120

Trade advertisement material should be supplied in print-ready format, to the chosen standard size and correct shape.

For trade advertising enquiries, please contact David James (Trade advert coordinator/Treasurer) at either thebridge832@gmail.com or 01373 832443.



Forrester Sylvester Mackett

SOLICITORS

Expert legal advice from our central Frome office



JANE HEALEY

Your local Wills, Trusts
& Probate expert



JOANNE AYRTON

Your local Residential
Property expert

Contact the team to book an appointment on: 01373 485485
6 Kingsway, Frome, BA11 1BT

www.fsmsolicitors.co.uk

enquiries@fsmsolicitors.co.uk

cloud
homecare

Quality care and
support in Warminster
and the surrounding
villages



We are a small, Corsley based care provider

**We provide care to people who need support
to remain living in their own home**

**Please telephone or email us, or visit our
website for further details**

Tel. 01373 832 597 enquiries@cloudhomecare.co.uk
www.cloudhomecare.co.uk

Non-drop blue Nordmann Christmas trees at Acres!

ACRES SUPPLY
NATIONAL GARDEN GIFTS

Christmas
National
Garden
Gift Cards
Available

Choose your favourite, premium,
fresh-cut tree from our selection of
5ft, 6ft or 7 ft trees (*larger sizes to order*)

Container-grown trees
Christmas Holly wreaths
Christmas tree stands

Christmas Trees

01373 832591
www.acresupply.com
info@acresupply.com

*Christmas tree stands
National Garden Gift Vouchers
Open 7 days a week*

Acres Supply
Corsley
BA12 7PP

5% discount on firewood for tenants of Longleat Estate

Pick your own kiln-dried logs ready to burn

or have standard hardwood
logs for storage delivered
to your door.

Monday to Friday: 7:30am to 4:15pm
01985 213507
longleat.co.uk/forestry

LONGLEAT
FORESTRY

