

The Bridge

September 2021

monthly magazine for the villages
of Corsley and Chapmanslade



*Come along to the Corsley Village Social, make it to Much Ado About Nothing,
tuck into cake at the Macmillan Coffee Morning, join in the PC meetings,
take up Folk Dancing, there's lots to do in September...*



Mendip Mowers

Why Honda?

*There is a simple reason why you will see
so many Honda products still hard at work
after many years of service;
they are built to last.*

OFFERS AVAILABLE THROUGHOUT THE YEAR

- Mowers • Tillers • Brush cutters
- Blowers • Chainsaws
- Hedge trimmers



GARDEN MACHINERY SPECIALIST

SALES • SERVICE • PARTS



www.mendipmowers.co.uk 01373 832965

Unit 7, Green Farm Industrial Estate, Chapmanslade BA13 4JJ



Frome Heating Specialists

J L and M W Knight

**Heating and plumbing engineers
specialising in:**

Oil and gas boiler servicing

Boiler replacement

Energy management

Pressurised hot water systems

Underfloor heating systems

Frome family business established 1964

Stavanger, Corsley, Nr Warminster, Wiltshire, BA12 7QL

Call 01373 832578



199876

The Bridge

monthly magazine for the villages of Corsley and Chapmanslade

Articles

Please submit articles either by email to **paradisefound86@icloud.com** or by hand (legible handwriting please!) and take them to the drop-off locations at Barters Plant Centre, Chapmanslade, or Acres Supply Garden Centre, Corsley by the deadline.

News, reports, updates, thank you's, etc, from individuals or local organisations are free – the more the merrier – keep 'em coming!

File types

Save your files as .doc – please don't send .docx files – I can't always open them successfully.

Advertising

Small ads are £1 for each item whether 'For Sale' or 'Wanted'.

Events/local organisation ads

(churches, clubs, playgroups, etc) are £2 per month for a boxed advert.

Full page ads cost £7.50, are subject to space availability and cannot be guaranteed,

If you are advertising, don't forget to take the fee – cash or cheque in a sealed envelope please, to either of the drop-off points (Barters Plant Centre or Acres Supply).

Please note: no cash, no advert!

Trade advertising

Please see information on the last page.

In this issue...

8 Bob's Bafflers
a cunning quiz

18 Parish Council briefing
Corsley

21 Six Open Doors
news from the pews

Corsley WI **28**
news from the ladies

Parish Council briefing **32**
Chapmanslade

Recollections **34**
Corsley School

36 Walking in Lockdown
walking through the water meadows

39 Whitbourne Chapel
chapel colloquy

42 Countryside matters
views from over the hedge

Deadline

**Deadline for articles
or adverts for the next
issue of The Bridge is
4pm 19th September**

**Please note that no
items will be accepted
after this date**

Diary Dates



September

Saturday 4th

Corsley Village Social – 2 to 5 pm, Corsley Playing Field

Sunday 5th

Much Ado About Nothing – 3 pm, Heywood House

Tuesday 7th

FREE Coffee Morning – 10 am, Corsley Reading Room

Wednesday 8th

Wiltshire Mobile Library – 1.45 pm to 2.30 pm, Chapmanslade School

Thursday 9th

Chapmanslade Parish Council meeting – 7.30 pm,

‘Taster’ Evening at Westbury Folk Dance Club – 7.30 pm, Community Hall, Westbury Leigh

Sunday 12th

Secret Gardens of the Close & Green Fair – 1 pm to 5 pm, Salisbury Cathedral Close

Monday 13th

Corsley Parish Council Annual Parish Meeting – 7.30 pm, Corsley Reading Room

Thursday 16th

Church and Community Coffee Morning – 10 am to 12 noon, Three Horseshoes, Chapmanslade

Saturday 18th

Macmillan Coffee Morning – 10 am to 3 pm, Chapmanslade Village Hall

Wednesday 22nd

Wiltshire Mobile Library – 1.45 pm to 2.30 pm, Chapmanslade School

October

Saturday 2nd

Harvest Flower Festival – 10.30 am to 4.30 pm, St Margaret’s Church, Corsley

Sunday 3rd

Harvest Flower Festival – 11 am to 4.30 pm, St Margaret’s Church, Corsley

Tuesday 5th to Saturday 9th

The Woodlanders - Variety Music Hall – East Woodlands Village Hall

Please note that the Editor’s email address has changed to paradisefound86@icloud.com



CORSLEY VILLAGE SOCIAL

Saturday 4th September 2.00 - 5.00pm

Corsley Cricket and Tennis Clubs join with the Playing Field Committee to present an afternoon of fun and friendship for all the family at the playing field

Games and activities for
all ages.

Croquet, skittles, boules
and much, much more

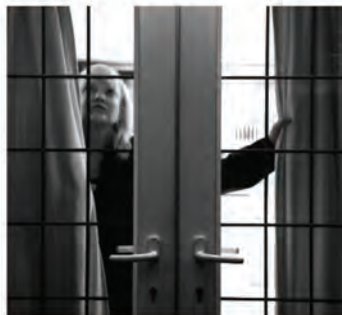


Join us for a cream tea
and games and meet
friends old and new

Admission Free

Just turn up

Contact: marion@nmc2.co.uk. 07796 544565 01373832314



Closing down and Opening up

a photo exhibition

The pandemic affected us all – and still does. We each dealt with it in our own way. In this unique exhibition, 21 photographers from the Frome Wessex Camera Club give their often highly personal interpretation of what it all meant to them. It's the first local exhibition of its kind, and an official 'opening up' for the Corsley Reading Room.

All of the photographs have been taken in the local area, ranging from landscapes, to documentary, to abstracts. Each photographer created a short series that together tell a larger story; whether poignant, beautiful, or thought-provoking.

Corsley Reading Room,
Corsley Heath, BA12 7PR

Free entry, open
October 22nd –
25th 10am to 5pm

Refreshments available
on the two weekend days.
Free car parking.



Photographers will be on hand to talk about their work & answer your questions.

www.fromwessexcameraclub.com





Pears Electricians

Nigel Charteris - BSc (Hons) M.I.E.T.



Professional Local Electrician

A HIGH STANDARD OF WORK AT REASONABLE RATES

Part P registered with www.napit.org.uk - Testimonials and references available

Faults & Troubleshooting • Repairs & Improvements
Installation Condition Reports • Boiler Wiring

www.pearselectrical.co.uk

01985 213314 or 07717 534026



OAKLEY

GARDEN MACHINERY

Grove Lane, Marston Trading Estate
 Frome, BA11 4AT

Hayter
 Mountfield
 Lawn King
 Westwood
 Stihl
 Honda
 Toro
 Echo
 Husqvarna
 Shindalwa
 Oregon
 and more...



**For Sales, Spares,
 Workshop Service
 and Repairs**

www.oakleyfrome.co.uk

01373 467712



S B Services



Contact Sean
 07828 671566

*For your garden maintenance
 and home improvements*

CHANTRY CONSTRUCTION

stone walling • patios

drives • extensions

prompt reliable service

mini digger and driver for hire

01373 836787 07855 343388

Instagram: [sundowncottagecornwall](https://www.instagram.com/sundowncottagecornwall)



Six bedrooms including downstairs room with shower room (sleeps 12). Private access onto beach.

Top class facilities including wi-fi. Pets allowed.

Please ring Sandy Parrish 01373 832522 for details.

**Stunning Views on Cornish
 Coast near Looe**



BECKINGTON PHYSIOTHERAPY PRACTICE

Has relocated to

Shawford Farm (A36)

Beckington

BA11 6SQ

Keep active with Physiotherapy

Lestey Fussell MCSP, SRP, AACP

With over 30 years of experience specialising in treatment of muscle, and joint problems including:

Back and neck pain

Work and posture related disorders,

Sports injuries,

Joint and muscle problems following accidents and surgery,

Arthritic conditions.

Home visits can be arranged.

Contact 01373 831483

Email lfussellphysio@gmail.com

Come and see us at our new address,

<https://www.beckingtonphysiotherapy.co.uk>

DAVID EDMUNDS & CO

ACCOUNTANTS & TAX CONSULTANTS

*Specialists in the self-employed, small and medium business and self assessment.
Preparation of accounts, VAT, PAYE, income tax and corporation tax returns.*

*Personal, friendly service
Evening appointments by arrangement*

Home 01373 832430

Bride by Design

Bridal gowns and accessories



2 Silver Street
Warminster, BA12 8PS

Please contact us to
arrange an appointment
t. 01985 217216

e. info@BridebyDesign.biz
www.bridebydesign.biz

COMPUTER & LAPTOP REPAIRS
UPGRADES / SYSTEMS & LAPTOPS

VIRUS REMOVAL / BROADBAND
WIRELESS / NETWORKING

nts
COMPUTING

FAST, FRIENDLY, PROFESSIONAL SERVICE
COMPETITIVE RATES
ONSITE OR WORKSHOP

CCC CompTIA
A+ Certified

call
01373 302901
www.ntscomputing.co.uk
help@ntscomputing.co.uk

LAPTOP REPAIRS
We also replace
laptop screens,
keyboards,
CD-DVD drives,
fix overheating
and more

James, Rob and Adam, former employees of Roger Patch Ltd are pleased to introduce...

CMP Complete Ltd

General Builders

19 Swaledale Road, Warminster, BA12 8FH

James 07801 868288

Rob 07766 905131

email cmpcompleteltd@gmail.com

HETAS registered to fit woodburners

Once again across Corsley and Chapmanslade we are holding a

Coffee Morning for Macmillan Cancer Support

10 am to 3 pm, Saturday 18th September 2021

Chapmanslade Village Hall

If you can help on the day, or donate tray bakes, please contact
Liz Garrett 01373 839060 or Janet Buick on 01373 832318
or just come along to enjoy a drink and cake with friends
and support this worthwhile cause

Chapmanslade and Corsley Churches

Harvest Flower Festival

10.30 am to 4.30 pm, Saturday 2nd October

11 am to 4.30 pm, Sunday 3rd October

St Margaret's Church, Corsley

A celebration of harvest

Admission £5

Refreshments available

Bob's bafflers

- 1 A Screwdriver cocktail is squeezed orange juice, ice cubes and which spirit?
- 2 Gouda is a popular cheese originating from which country?
- 3 Which element is denoted by the chemical symbol Sn in the Periodic Table?
- 4 Which tennis Grand Slam is played on a clay surface?
- 5 If you have completed the National Three Peaks challenge, which three UK mountains would you have climbed?
- 6 Where is the smallest bone in the human body located?
- 7 Which former Soviet republic, bordering the Caspian Sea, has the capital Baku?
- 8 Which character in Sheridan's 'The Rivals' constantly misuses words?
- 9 Which US-born artist was a close friend of Oscar Wilde and his most-famous painting is possibly of his mother?
- 10 What 4-letter word can precede out, hold and draw?
- 11 In which English port did Dracula land in Bram Stoker's novel?
- 12 This is an unusual paragraph. I'm curious as to just how quickly you can find out what is so unusual about it. It looks so ordinary and plain that you would think nothing was wrong with it. In fact, nothing is wrong with it! It is highly unusual though. Study it and think about it, but you still may not find anything odd. But if you work at it a bit, you might find out. Try to do so without any coaching!

Answers on page 44

CORSLEY MEMORIAL
PLAYING FIELD

Charity Number: 305497



Corsley Village Social

After months of separation and isolation when so many of us have been unable to meet with friends and neighbours it seems like a good time to bring the village back together again.

The Corsley Cricket and Tennis Clubs are joining with the War Memorial Playing Field Committee to present that opportunity. On Saturday September 4th from 2 - 5 pm there will be a social afternoon on the playing field where all villagers can come together to take part in family games and activities or just sit and chat over a cup of tea.

Try out boules, croquet, skittles, family games or relax and enjoy a traditional cream tea with friends old and new. There is no admission charge just turn up and have fun.

Contact Marion - marion@nmc2.co.uk, 01373 832314 or 07796 544565

UPVC REPAIRS WILTSHIRE.CO.UK

FOR PROFESSIONAL WINDOW & DOOR REPAIRS

Are you having a problem with your UPVC windows or doors?

- ✓ Misted glass
- ✓ Broken or faulty window hinges
- ✓ Faulty locks
- ✓ Jammed windows or doors
- ✓ UPVC door adjustments
- ✓ Window and door handles

Call us – we are here to help

All work guaranteed

01373 430010 07795 143228 www.upvcrepairswiltshire.co.uk

the three horseshoes

Open daily from 10AM-11PM
serving delicious home cooked food
(12-3, 6-10 Mon-Sat. & all day Sun.)

Enjoy a refreshing drink in our beer garden
with spectacular views of Longleat and Cley Hill,
or indulge with one of our regular meal deals
by the warm open fire on a bitter winter's day.

We organise monthly events,
featuring live music, comedy + much more!

follow us on Facebook for more details



threehorseshoeschapmanslade



Chapmanslade Village Hall

Can be hired for all your functions:
parties, weddings, meetings, classes, etc

For hiring information, phone
Ken Davies 01373 832034 or email
kennethdavies1949@gmail.com

YOGA CLASSES

Corsley Reading Room

Tuesdays 7-8.30 pm

Wednesdays 5.30-7 pm

(other classes also available)

Jackie Jasper

01373 832301 yogawithjackiej@gmail.com

www.yogawithjackiej.co.uk



**Shake off those pounds and
dance yourself fit.**

Chapmanslade Village Hall
Monday 7.30pm - 8.30pm

Longbridge Deverill Village Hall
Thursday 7pm - 8pm

For all levels of fitness and
NO experience needed.

For more information please contact
Amy 07830 119032



Karina

Mobile Hairdresser

Tel. 01373 832823

Mob. 07742 690337

Rose Knight



Dog and cat
minding service

01373 464904

07773 435254

knight_rosemary@sky.com



BUSY BEES PRE-SCHOOL SPACES AVAILABLE FOR SEPTEMBER 2020

- Term-time only 8am to 5pm,
Monday to Friday
- 2-4 year-olds
- Government funded hours for
2, 3 and 4 year-olds



Busy Bees Pre-School
High Street, Chapmanslade, BA13 4AN
Kelly Martin 07749 257608

busybeespre-school@hotmail.co.uk

OFSTED Reg:145873

Charity No:298660

For your
Heating Oil Supplies
contact

KINCH FUELS

at their
local depot in
Devizes, Wiltshire

Telephone 01380 727102

*The company you and
your home will warm to*



LUXURY PRIVATE CAR HIRE

A locally based, door-to-door, personal
service for up to six passengers in
air conditioned comfort
AIRPORTS • SEAPORTS • ANYWHERE

For bookings, please call
01985 840088 07903 307734

Mole Catcher

01373836350

07512681111

No Mole

No Fee



Kevin O'Mahony

Quality Painter and Decorator

Internal and external painting

Artexing

Wallpapering

Coving

Hand painted kitchen units

07724 349447 or 01985 301197

email kevo7743@googlemail.com

www.thewarminsterpainter.co.uk

JONATHAN CORP

Painter and Decorator

General House Maintenance

Sturford Mead Farm, Corsley

Warminster, Wiltshire, BA12 7QU

01373 832213

**Advertise here
for £22 per year**

Postlebury News

R Gould – Newsagent

All papers and magazines

Home delivery service

01749 850556

07979 452677



Steve Dayman-Johns

Driving Instructor

Condensed Courses and

Gift Vouchers available

email stevekdj@gmail.com



Tel 01373 865422 - Mob 07730 445648



Forrester Sylvester Mackett

SOLICITORS

Expert legal advice from our central Frome office



JANE HEALEY

Your local Wills, Trusts
& Probate expert

JOANNE AYRTON

Your local Residential
Property expert



Contact the team to book an appointment on: 01373 485485

6 Kingsway, Frome, BA11 1BT

www.fsmsolicitors.co.uk

enquiries@fsmsolicitors.co.uk

The Woodlanders are so happy to be back!

In 1977, the choir mistress at St Katherine's Church in East Woodlands had the idea of staging a show in East Woodlands Village Hall to raise money to fund the much-needed restoration of the hall. The Woodlanders have produced a variety show each autumn since then and following completion of the refurbishment the proceeds have been used to support local charities. Over the 44 years well over £150,000 has been raised and distributed to deserving causes around Frome and the local villages.

The Woodlanders are determined to make a big comeback in October 2021 following the 2020 hiatus, so are rehearsing for the show which will be on stage from Tuesday 5th to Friday 9th October. "We are so happy to be back and intend to put on a show designed to be a much-needed tonic and bring some fun back into our lives after the rigours of the last eighteen months or so", said Chairman, Sandra Gaisford. "We are really pleased to have a new young member on stage this year and, as always, have some great singers and comedy entertainers. Our purpose is not just to entertain but to raise as much money for local charities as we can."

Recently cheques were presented from the proceeds of the 2019 show to Fair Frome, Mendip Community Transport, CRY (Cardiac Risk in the Young) and East Woodlands Village Hall who are currently endeavouring to buy the hall for the community to ensure there is a thriving hub for future generations to enjoy.

This year, due to public demand, there will be a matinee performance on Saturday, 9th October so people who would rather not be out on darker nights can still come to enjoy the show. Ticket prices have been frozen at £10 and the new box office phone number is 01373 839008, e mail: reneecole14@ymail.com

Dancing again at last!

The Westbury Folk Dance Club, which has been running for over 40 years, will be starting up again on Thursday 9th September after a very long break due to COVID-19.

So, if anyone is looking for a new interest and wants to keep fit as well, come along to try out folk dancing as a new fun pastime. No experience is needed and a partner is not necessary. Every week there is a different caller who will be glad to help newcomers.

The type of dancing is mainly English Country Dancing but there is regular Playford

Dancing (this is the type of dancing you may have seen in Jane Austen dramas on TV)

Dancing takes place in old Westbury Leigh at the Community Hall in the church (BA13 3SQ) where there is also a car park.

Club nights are every Thursday night at 7.30pm. The first 'tester' evening is free and we hope as many people as possible will come and join us in dancing to some great music. If you have any queries please contact **Ann** on **07947 048681**.



Est
1977

THE WOODLANDERS

VARIETY MUSIC HALL

5th to 9th OCTOBER 2021

East Woodlands Village Hall

Local entertainers raising
funds for local charities

Tickets £10
Box Office 01373 839008
reneecole14@ymail.com

ALLSOP CARPETS & FLOORING

DOMESTIC ♦ COMMERCIAL ♦ INDUSTRIAL

Christchurch Street West, Frome BA11 1EB

TEL: 01373 463866 MOBILE: 07887 953014

www.allsopcarpets.co.uk

KEYVOLUTION

Locksmith and
Carpentry Services
serving the Wiltshire Area

Warminster based company offering locksmith and carpentry.
Police cleared, reliable and honest service.

Any other quote beaten.

- BS3621 lock upgrades for house insurance approval
- Garage doors, locks and running gear
- Lock repairs – specialising in Chubb mortice locks
- Upvc double-glazed door and window locks fitted – even old ones!
- Door or window locks opened destructively or non-destructively (indemnity required for these services)
- Digital code locks supplied and fitted
- All types of carpentry work – mostly 2nd fix and maintenance

Check out my website

www.keyvolution.co.uk



or call Ben on 07748 214799 or 01985 219799



COMPUTER PROBLEMS?

01373 812804

Email
Advice for new users
Anti-virus defence
Web sites
Custom programming

Networks - home & office
Home tuition
Web access
Privacy & security
Repairs

www.technojeeves.com

info@technojeeves.com



Acer Tree Surgeons Ltd are Wiltshire based, and approved by the Arboricultural Association. Our team are all NPTC qualified and first aid trained and proof of insurance is sent out with every quote

Tree removal – dismantling and felling

Crown reductions, re-shaping and pruning

Hedge cutting

Stump grinding

Qualified surveys and management of trees

Free no-obligation quotations and health check

Contact Nick or Roy on 07590 986261 or 01373 832026

royderham@acertreesurgeons.co.uk

www.acertreesurgeons.co.uk

The Old Post Office, 85 High Street, Chapmanslade, BA13 4AN



Arboricultural
ASSOCIATION

trees.org.uk



CONTRACTORS HEALTH & SAFETY ASSESSMENT BOARD
Accredited Contractor
www.chas.gov.uk



BARTERS PLANT CENTRE

'Passionate about Plants'

Shrubs • Perennials • Trees • Roses • Conifers
Climbers • Fruit Trees • Hedging • Soft Fruit • Seeds
Bulbs • Basket Plants • Bedding • Vegetable Plants
National Garden Gift Vouchers

www.barters.co.uk



Barter's Plant Showroom
open 7 days a week

Monday – Saturday 9am – 4pm; Sunday 10am – 4pm

01373 832694 or email: retail@barters.co.uk

www.barters.co.uk



Home Improvements

For all your home requirements

Tiling, decorating, garden fencing, pointing, plumbing,
heating systems, flooring, DIY projects, lighting.

www.homeimprovs.com

07949145960

Vaccinations, flea,
lungworm and
seasonal tick
prevention ... plus
so much more!



Garston
Veterinary Group

25%
Minimum
Savings

Spread the cost of your pet's
preventative healthcare into
affordable monthly payments



Cats £13.00
per month

Dogs from £13.50
per month *

*please contact one of the surgeries for specific prices
for your dog. Prices are based on adult weight.



wellness@garstonvets.co.uk

www.garstonvets.co.uk



Hypnotherapy

If you need help with:

Anxiety
Depression
Phobias (such as flying or spiders)
Panic attacks
Relaxation
Weight management
Smoking cessation
Natural childbirth
Confidence
Public speaking
Exam nerves
and much, much more...

Call ANJI HOLLAND on
07944 647 978 / 01373 832 898
to enquire or just for a chat

www.hollandhypnotherapy.com

With practices in Chapmanslade and Bath

I am a member of the National Council for Hypnotherapists
and am bound by their code of practice and ethics

Friends of Salisbury Cathedral

Secret Gardens of the Close and Green Fair

The Friends of Salisbury Cathedral's 'Secret Gardens of the Close' event returns in September and this year there's a new attraction

The event, which enables the public to visit gardens in Salisbury Cathedral Close that are normally hidden from view, will include a 'Green Fair' comprising a dozen stalls with an eco-friendly theme.

'Secret Gardens of the Close & Green Fair' takes place on Sunday 12th September from 1 pm to 5 pm.



Time for tea. Tea and cakes will be available at South Canonry, the home of the Bishop of Salisbury



Flashback to 2019 and a visitor enjoys a stroll in one of the 'secret gardens of the Close'

As well as touring some of the larger gardens in the Close and De Vaux Place, visitors can enjoy tea and cake on the lawn of South Canonry, the home of the Bishop of Salisbury.

The 'Green Fair' stalls include Harnham Water Meadows Trust, Plantlife and Wiltshire Wildlife Trust, whose representatives will be explaining what they do and how the public can get involved.

Salisbury Florilegium Society will be hosting an exhibition of members' botanical paintings in the Medieval Hall and musical entertainment will be provided by recorder group Close Consort, whose members will be playing in a number of the gardens.

Pictures copyright Katharine Shearing

Friends' chairman Duncan Glass said:
"The Friends are very much looking forward to holding our 'Secret Gardens of the Close' afternoon following the disappointment of having to cancel last year due to the COVID-19 restrictions. The Green Fair will enhance this popular event and we look forward to welcoming everyone to our flagship event."

Tickets for 'Secret Gardens of the Close & Green Fair' are £10 (under-16s free), and are available at the event.

For more details, contact the Friends' office on 01722 555190.

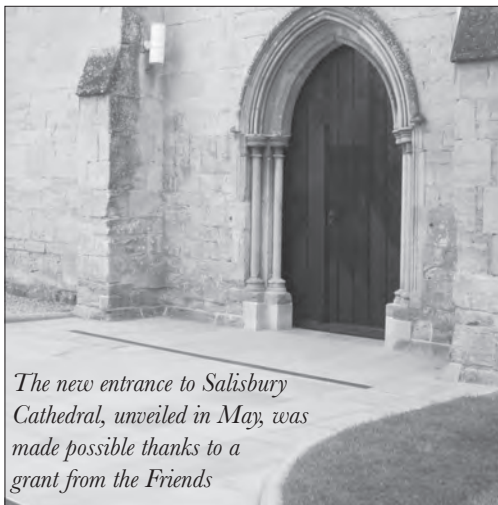
Come and join the Friends of Salisbury Cathedral!

The Friends of Salisbury Cathedral is a charity that has been giving grants to Salisbury Cathedral since 1930.

Recent projects have included the new level access to the cathedral and the installation of live streaming equipment, the latter enabling services to be broadcast live onto the cathedral's YouTube channel for those unable to attend worship in person and during the national lockdowns of 2020 and 2021 when the cathedral was closed. These grants have been made possible thanks to members' subscriptions, donations and legacies.

Annual subscriptions are £25 for a single membership and £40 for joint membership. Members receive a Friends' membership card, entitling them to visit the cathedral free of charge (excluding ticketed events, concerts or parking). They are sent newsletters and the annual report, and they receive invitations to events: musical evenings, talks, theatre performances, holidays and the annual Friends' Day. This year's Friends' Day is on Saturday 25th September in the cathedral.

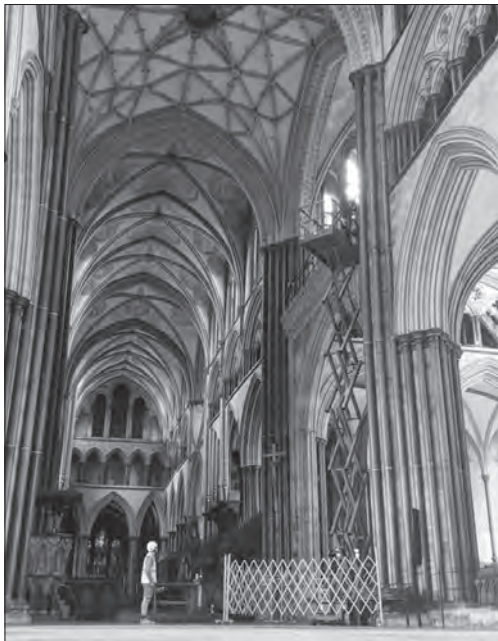
The AGM is followed by a lecture given by journalist and author Christopher Somerville, who will talk about his book 'Ships of Heaven – The Private Life of Britain's Cathedrals'.



The new entrance to Salisbury Cathedral, unveiled in May, was made possible thanks to a grant from the Friends

Following the lecture, members can enjoy afternoon tea in the cloisters, a short organ recital and evensong.

For further details, contact the Friends' office on 01722 555190 or email friends@salcath.co.uk.



Live streaming equipment was installed in the cathedral in September, enabling services to be viewed as they happen by people worshipping at home

Corsley Parish Council

Parish Council Briefing

Parish Clerk, John Willcox, rounds up the PC's activity in August

The Parish Council met on 27th July in the Reading Room and the Chair welcomed the two co-opted members, Mrs Ruth Massey and Mrs Lavinia Mitchell.

The meeting was triggered by the need to discuss two planning applications that had been received. However the opportunity was taken to consider a number of other issues and this meant that the meeting turned out to be one of the longer ones in recent history – let us hope that the two new members are not put off!

Streetscene

David Ball, the PC rep for Streetscene reported on the response from Wiltshire Council regarding the village 'gates' idea. Any gates should be placed at the village boundaries, just beyond the Picket Post roundabout to the east and just before the White Hart junction to the west. In addition, the siting must be approved by Wiltshire Council, a contractor must be used who has appropriate insurance cover and the construction such that the gates would collapse in the event of collision from vehicles. And... all the costs would fall on the Parish Council.

David also reported on communication with Wiltshire Council on the cutting of grass verges. Readers will probably have noticed that there are some lanes in the village where the growth from the hedges and verges is reducing the carriageway width by a considerable extent and a number of complaints have been received by the

Parish Council. David explained that it was now Wiltshire Council's policy as part of the climate emergency and to improve biodiversity to do a verge cut in September. However, if there are visibility/safety issues they will review. After much discussion, it was agreed that Councillors should advise David of lanes where there are visibility/safety issues and thereafter see what the response from the county is. If, following this, there are still concerns and accepting that Wiltshire Council have indicated that they are not keen on Parish Councils providing their own solutions, it was agreed that the PC should consider funding additional cuts from parish funds.

Planning

It should be noted for all those wishing to apply for planning permission that there is currently a 8-12 week delay in applications being put onto the system. There is also a potential delay in decisions being issued once on the system of four weeks or more.

The council considered two applications:

PL/2021/05441 – Proposed extension at 1 Heathway, Corsley, BA12 7PJ

After considerable discussion the PC agreed that it does not object to the two storey extension to 1 Heathway providing that:

- Planning officers ensure that the 45° rule is applied to the proposals to ensure that the outlook, light and privacy of number 2 Heathway are not adversely affected.
- That the Highways officer ensures that the access and car parking proposed is appropriate and safe.

- That a boundary is retained to denote the curtilage of the property from land in the ownership of the Highway authority at the front of the property.

The PC noted that there were a number of non-planning-specific issues that had been raised by one of the other consultees on the application.

PL/2021/06150 – Convert and extend two barns to create a dwelling house with ancillary accommodation and creation of new access following the demolition of two barns and associated works at Water farm, Corsley

The PC spent a considerable amount of time considering this application. Ultimately, the PC agreed that there were no objections to the conversion of agricultural buildings at Water Farm into one dwelling and ancillary accommodation providing that:

- Planning officers work with the applicant to enhance the appearance of north barn (main dwelling house) to reflect, where appropriate, the materials and finish of

East Barn (ancillary accommodation) in order to ensure that the overall development is in keeping with its rural setting and agricultural history.

- That all permitted development rights are removed from the site.

Annual Parish Meeting (APM)

It was confirmed that the APM should be held on Monday 13th September in the Reading Room and that the PC should invite our County Councillor, Bill Parks, the Chairman of the Trustees of the Reading Room, Hugh Deed, and the Project Manager of the Baytree Close Development, Christine Brown, to speak at the meeting.

Dates of next meetings

Annual Parish Meeting 13th September
followed by the Quarterly Meeting
Quarterly Meeting 6th December

Meetings to be held in the Lower Room at Corsley Reading Room and will begin at 7.30pm)

John Willcox, Parish Clerk

Dr Murrison visits Chapmanslade



During the last week of July, I set off on a tour of thirty-two of South West Wiltshire's smaller parishes and villages on what I call my 'Rural Rides' (with apologies to William Cobbett, the

nineteenth century pamphleteer).

From Tollard Royal in the south to Bulkington in the north, I set up in village halls - I have so many of these great buildings in my constituency I thought I'd write a book about them when I have time dedicated perhaps to Cobbett – but also pubs, churches, shops and leisure centres.

My first stop on Tuesday 27th was Chapmanslade. I'd like to say thank you to Ben, our host at the Three Horseshoes Pub whose hospitality included delicious coffees and croissants – I can see why the pub is a popular spot to drop in for a morning coffee, as well as perhaps something a little stronger later on. I'd also like to thank local residents for coming to see me.



E G MARTIN LTD

Heating Oil Distributors

Telephone 01373 822784

Victory Road, West Wiltshire Trading Estate
Westbury, Wiltshire, BA13 4JL

WESTERN SKIP HIRE

Telephone 01373 813132

Victory Road, West Wiltshire Trading Estate
Westbury, Wiltshire, BA13 4JL



Domestic Appliance Sales and Repair Service

Domesticare

21 Keyford, Frome

www.domesticarefrome.co.uk



01373 467351

Ski Apartment – French Alps

Ski in/ski out – sleeps 6

Well equipped – immaculate condition

For more information or to book online visit:

w. www.ski-les-cimes.co.uk

f. facebook.com/ski.les.cimes

e. lesleygolledge@gmail.com

t. 01373 832533

TEA & sympathy

Considerate catering at a difficult time

*All our food is homemade, we provide delicious teas, sandwiches and cakes
through to more elaborate options.*

We offer a truly bespoke, caring and professional service.



Telephone Kim Clark on 01373 832151 or 07843 056916

e-mail kim@teaandsympathy.uk.com

www.teaandsympathy.uk.com

Six Open Doors

Dear Friends,

September is a bumper month of birthdays for my family – including my own, as a child I used to feel a bit envious of my friends who had their birthdays during school term time while mine being very early in the month was in holiday time. At least I was never ‘bumped’ in the playground! Following my birthday would be the return to school and a new academic year. I wonder how many ‘new years’ we can have in a year? In western society we think of ‘new year’ as the progression from 31st December to 1st January while other cultures and calendars, particularly eastern ones, have theirs at other times. September is the beginning of the ecclesiastical year in the Eastern Orthodox Church while ours begins with Advent, four Sundays before Christmas Day. In the Jewish faith, new year begins in the month of Tishri, (the seventh month) which covers part of September and October, with a festival called New Year Trumpets or Rosh Hashanah which can be translated as ‘first’ or ‘head of the year’ and marks the start of the Jewish High Holy Days leading up to Yom Kippur (Day of Atonement). It’s all about making fresh starts.

September was originally the seventh month, the name coming from Latin *septem* - “seven” with March being the first month of the year until about 451BC when January and February were added to the Julian Calendar, making September the ninth month but retaining its name. So many things begin again in September, in tandem with the new school year, when all of a sudden pupils and students take another step up on the ladder of education. Perhaps this September more than any other, though, all of us are feeling ready to embark on a new beginning. Learning to live freely again as restrictions have been lifted, but not as easy as we might have first imagined. I wonder what you will be leaving behind – never to return to; and what you will be looking forward to taking up again? What does a fresh start mean for you?

COVID-19 hasn’t gone away, but we can still live responsibly and get going again. Looking around our garden it is obvious that while we might have been restricted in our comings and goings, the fruit trees and bees have carried on as usual and there is much fruit to be picked over the coming weeks as it ripens.

So we look to a time of harvest and giving thanks for the abundant generosity of God’s love in creation, for the increase of community spirit during lockdown and we pray that it won’t be lost as we begin again. To the community of the church in Galatia, the apostle Paul wrote that the fruits of the Spirit are love, joy, peace, patience, kindness, generosity, faithfulness, gentleness and self-control. We have learned that people matter more than possessions, when Jesus, the Son of God lived among us He exemplified a loving and generous way of living, it is a way of life that bears fruit – fruit that will last and fruit that is to be shared.

With love and prayer for the fruit of the Holy Spirit to be and remain among us, always. Amen
Gay

September Church Diary

We are continuing to take sensible steps to ensure the safety of our clergy and congregations. These measures may vary from church to church, so please do follow any local advice when you arrive at an event or service.



Sunday 5th September 14th Sunday after Trinity

8 am Holy Communion at Kingston Deverill

9.30 am Eucharist at St Margaret's Corsley

10.30 am Morning Worship at Longbridge Deverill



Sunday 12th September 15th Sunday after Trinity

9.30 am Family Communion at St Philip and St James Chapmanslade

10.30 am Eucharist at Kingston Deverill



Thursday 16th September

10 am until 12 noon Church and Community Coffee Morning
at the Three Horseshoes Chapmanslade



Sunday 19th September 16th Sunday after Trinity

10.30 am Eucharist at Brixton Deverill

11.00 am BCP Matins service at St Margaret's Corsley



Sunday 26th September 17th Sunday after Trinity

9.30 am Eucharist at St Philip and St James Chapmanslade

10.30 am Eucharist at Longbridge Deverill



Saturday/Sunday 2nd and 3rd October

Harvest Flower Festival at St Margaret's Church Corsley

Saturday 2nd, 10.30 am until 4.30 pm and Sunday 3rd, 11 am until 4.30 pm



Sunday 3rd October

6 pm Harvest Festival Songs of Praise at St Margaret's Church Corsley



Saturday 9th October

7 pm for 7.30 pm Harvest Supper at Chapmanslade Village Hall

Saturday 2nd and Sunday 3rd October Harvest Flower Festival

There will be a Harvest Flower Festival at St Margaret's Church Corsley on Saturday 2nd – 10.30 am until 4.30 pm and Sunday 3rd – 11 am until 4.30 pm. Entry will be £5 for adults with children free of charge. Refreshments will be available.

Sunday 3rd October Harvest Festival Songs of Praise

There will be a Harvest Festival Songs of Praise at St Margaret's Church Corsley at 6 pm. This will be a chance to celebrate harvest at the end of our Flower Festival weekend. Everyone will have a chance to sing favourite hymns with a harvest theme. Tinned or packet food donations will be welcome, and will be passed to the Warminster and District Food Bank.

Saturday 9th October – Harvest Supper

We celebrate our Harvest Supper on Saturday 9th October, for the first time in two years. It will be in Chapmanslade Village Hall at 7 pm for 7.30 pm. Numbers will be limited to ensure we can provide space and fresh air for everyone. Further details on how to buy tickets are on the separate advert.

Saturday 30th and Sunday 31st October Remembering everyone we have lost

At the end of October each year we celebrate All Hallows Eve (Halloween) followed by All Saints Day and All Souls Day giving us a chance to remember all who have gone before us. This year more than any other, the effects of the pandemic have given us a special reason for thinking about those we have lost. There will be a Benefice All Souls Service of Remembrance on Sunday 31st at St Philip and St James Church in Chapmanslade. See the October edition of The Bridge for the time.

In addition, there will be an opportunity for everyone to have a special remembrance posy made and displayed in the church, which will be open for viewing over the weekend of 30th and 31st. For a small charge of £5, identical posies in small vases will be placed around the church with a card printed with your own message. There will be more information in the September newsletter and the October edition of The Bridge.

Can you help?

We still have vacancies for a Churchwarden at St Margaret's Corsley and a Lay Pastoral Assistant in the parish. Rev Gay Maynard is currently the person to contact for anything related to St Margaret's.

Every Month

Church and Community Coffee Mornings are continuing, and will take place every third Thursday in the month at the Three Horseshoes Chapmanslade from 10 am until 12 noon. Everyone is welcome, so please come and use this chance to meet old and new friends.

Join the 50/50 Club!

For only £24 a year or £2 per month, you can join the Corsley and Chapmanslade Churches 50/50 Club. Half of the payment is returned as prizes, with the other half supporting church funds. There is a £100 prize to be won each month! It is possible to pay by cash, cheque or standing order. If you would like to take part you can sign up with Neil Britten on 01373 832515.

Parish Contacts for Corsley and Chapmanslade

Rural Dean	Rev Pauline Reid revpauline@btinternet.com	01985 841290 (Day off Fridays)
Associate Priest	Rev Gay Maynard revgmaynard@gmail.com	01373 832490 (Day off Mondays)
Lay Pastoral Assistants	Barbara Hughes Claire Tanner	01373 832273 01985 218099
Pastoral Visitor	Alan Hopkinson	01373 832393
Churchwardens		
St Philip & St James'	Ian Buick	01373 832318
St Margaret's	Rev Gay Maynard	01373 832490
Deputy Churchwardens		
St Margaret's	Currently vacant	
St Philip & St James'	Janet Aylesbury	01373 832752
PCC Secretary	Sue Fear	01373 832074
PCC Treasurer	Ian and Janet Buick	01373 832318
Planned Giving Officer	Judith Helliard	01373 832803
Benefice Administrator	Currently vacant	
Choir Leader	Claire Tanner	01985 218099
Tower Captain	Michael Attenborough	
Electoral Roll	Di Britten	01373 832515
50/50 Club	Neil Britten	01373 832515
After Alpha Home Group	Trudi Hopkinson	01373 832393
Time To Think Home Group	Renee Cole	01373 839008

Copy for Six Open Doors should be sent to Ian Buick at ibuickuk@gmail.com or by phone on 01373 832318. If you would like to receive weekly news of Church events and activities, please contact Ian

Little Cuckoo's Pre-School

Lyes Green, Corsley, BA12 7QH

Friendly, dedicated pre-school in the heart of the countryside for children aged 2-5 years

Monday, Wednesday, Thursday and Friday
9 am - 3 pm during term-times

We accept 2-year-old funding in accordance with Wiltshire Council guidelines
Mother and Toddler group Tuesday mornings
10 am - 11.30 am during term-times



SESSIONS AVAILABLE NOW

Speak to Hayley McMahon
Pre-School Manager on 01373 832298

Find us on facebook or visit www.littlecuckoos.co.uk

A free trial session is available

Registered Charity Number 1064800

Corsley Tennis Club



New members welcome –
all ages, all abilities

Three hard courts available all year
Weekly junior coaching available
Low subscriptions

COVID info can be found on our website:

www.corsley-tennis.uk



CHRIS SEVIOUR
Building Services

07894 708949

cmseviour@gmail.com

Roofing, Loft conversions,
Extensions, Plastering,
Natural stonework

Cross Keys

Community Free House

Lyes Green, Corsley, BA12 7PB

Monday

12 noon to 3pm and 6pm to 11pm
Food served 12 noon –to 3pm and
6pm to 9pm

Tuesday

6pm to 11pm
No food

**Wednesday, Thursday,
Friday and Saturday**

12 noon to 3pm and 6pm to 11pm
Food served 12 noon to 3pm and
6pm to 9pm

Sunday

12 noon to 8.30pm
Food served 12 noon to 4pm

01373 832406

www.crosskeyscorsley.co.uk

Facebook @CrossKeysInnCorsley

NOTEBOOKS2GO

**Laptop / PC / Tablet / Phone / Apple
Repairs / Upgrades / Accessories**

We can repair all of your

Apple Devices!



Tablet & Smartphone Repairs

"Affordable Reliable Service"



Screens - Charge Port - Camera - Battery - Headphone Jack & More

Computer Repair

any brand, any problem



DELL TOSHIBA hp acer Gateway ASUS SONY VAIO SAMSUNG

51 Haynes Road, Westbury, Wiltshire, BA11 3HD

Tel - 01373 865400 / Email - support@notebooks2go.co.uk

Chapmanslade Motor Services

**Vehicle repair
and servicing**

**Brake
specialist**

**MOT preparation
and repairs**



**Batteries
Exhausts
Tyres**



Quality service at competitive rates

FREE ~ wheel balancing and tracking with new tyres

FREE ~ courtesy car

Electronic diagnostics available – most makes covered

Green Farm Industrial Estate, Chapmanslade

01373 832188 or 07711 256927





**01373
455911**

CLEANING & MAINTENANCE 2000 LTD

OUR SERVICES INCLUDE

- Domestic Cleaning
- Commercial Cleaning
- Upholstery Cleaning
 - Carpet Cleaning
- One off Spring Cleans
- Garden Maintenance
 - Home & Garden Clearance

 www.busybees2000.co.uk 
info@busybees2000.co.uk

**JOHN E S JONES
& SON LTD**

**GENERAL
BUILDER**



Carpentry, painting and
decorating, extensions, uPVC,
facias and gutters, fencing,
decking and patios

Please call

01373 832600

07795 177920

07810 646335

Get your affairs in order

Calling all Trustees!

Do you have a trust in your family or are you a trustee looking after money or property for someone, such as a child?

If the answer is 'yes', then from March 2022 it is likely that you will need to register the trust with HMRC.

Currently, certain trusts need to be registered with HMRC if they are liable for Income Tax, Inheritance Tax, Stamp Duty or Capital Gains Tax. From March 2022 it will be necessary to register nearly all 'express' trusts, even if there is no tax to pay.

What is an 'express' trust?

An 'express trust' is a trust that was created deliberately, such as a trust created by someone's Will or a trust that a person makes by a deed during their lifetime. This means that after a person has died, if they have a trust in their Will which continues two years after the death, it will need to be registered.

Examples of the kind of trusts that will need to be registered include:

- A trust holding money for a child who has not reached 18 (or 21/25 depending on the wording in the Will)
- A discretionary trust (where the money is to be held for several beneficiaries, but the trustees can decide how to use the funds)
- A life interest trust, where someone dies and leaves some or all their estate in a trust for another person for their lifetime and then to other beneficiaries when that person dies.

There are a few trusts which will be exempt from registration, they include:

- Certain charitable trusts
 - Trusts that are set up to be used at a later date with less than £100 in them
 - Some trusts for land, pensions, and insurance policies
 - Trusts imposed by law or by a court
- If you are not sure, it is worth checking.

Who is responsible for Registering the Trust?

The trustees will be responsible for registering the trust. If you are an executor of a Will, you may also be a trustee. It is best to check the Will or the trust paperwork to identify the trustees.

You cannot register these Trusts yet. The online portal for registering such trusts is expected to be ready later in 2021. If you think this could affect you it would be sensible to begin making enquiries to see if you need to do anything.

I have just made a Will with a trust in it, do I need to register it now?

No, a trust in your Will only starts after you die. Your trustees may need to register it if the trust continues beyond two years after your death.

Article kindly supplied by Forrester Sylvester Mackett

Please note that the Editor's email address has changed to paradisefound86@icloud.com

Corsley WI

August news

Corsley WI President, Judith Helliar, rounds up the August meeting and announces some forthcoming events



The August meeting was a first for Corsley WI. We enjoyed a lovely summer's evening picnic on the Memorial Field, making use of the pavilion for outside seating and the kitchen for hot drinks to complete our picnic. How lovely to have these facilities right in the centre of our village; some of our members were able just to walk to the event. The opportunity to be outside reassured our members of the safety of being together; whilst out in the fresh air.

We are now looking forward to our Centenary Celebration (members only), a meal at the Reading Rooms with Sandy Parrish and her staff preparing a special meal for us. Although we will be a smaller gathering than we had hoped (due to COVID-19), all our present members will be attending. Our speaker for the evening will be a professional Master

of Ceremonies, who we know will make the evening special.

The October meeting is an Antiques Valuation, to be held in the Reading Rooms (open at 7pm) on Thursday 14th October for valuation. It will be open to friends with a small charge of £5 to bring along an item for Gareth Wasp of Cooper and Tanner to value; some items will then be discussed while we enjoy a glass of wine or coffee.

Come and enjoy a social evening with your local WI.

Judith Helliar
Corsley WI President



Corsley Tennis Club News



It's been great to see children having fun on the courts and playing field as part of Tennis Fun 4 You during August with committee volunteers and parents joining in. Thanks to Corsley Parish Council for providing funding for this activity and Jon and Di for planning and delivering it.

Jon also ran tournaments for four age groups: tots, U8s, U10s and teens. Well done all who took part and particular the winners!

There's still one more tournament for adults – mixed doubles in September and then a whole year to get in practice for the 2022 competitions if you lost out this time.

The double court will be out of action for repainting for a couple of days in September. The exact dates will depend on the weather, so you will need to keep an eye on emails

and re-book sessions if yours are affected.

It was windy on court for one of the club sessions this week so I thought I'd check out some tips for those conditions. The experts say, work out where the wind is coming from; if it's behind you go for slice and topspin; in your face, ditch the spin and go for flat shots. If it's blowing sideways, work out the direction and use it to your advantage. So that's all pretty straightforward then! I'll hold my finger in the wind and then pick up the racket! There's still a way to go I think until I've cracked the technique.

See you on court – windy or not.

*Liz Garrett
Club Secretary*

Chapmanslade and Corsley Churches

Harvest Supper

7 for 7.30pm, Saturday 9th October
Chapmanslade Village Hall

Tickets: Adults £7, children £3
from either Claire da Costa 01373 832113
claire@manorfarmcorsley.com
or Anne Good 01373 832505

Piano Lessons

All standards welcome

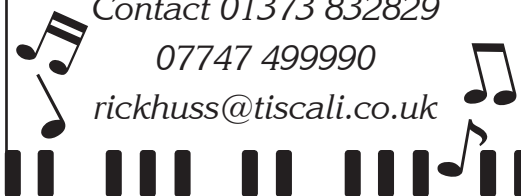
Debbie Rickhuss

Teacher of Pianoforte and Theory

Contact 01373 832829

07747 499990

rickhuss@tiscali.co.uk



M W Garden Services

20+ years experience

A tailor made service for all types of garden maintenance

Insured and CBI's checked

mark22.weaver@mypostoffice.co.uk

Telephone 01373 832854

Mobile 07921 818452

Do you need a
plumber? Call...



Paul Antell Plumbing

07890 366832

01373 467427

Professional, reliable, friendly and local

paulantellplumbing@talktalk.net

www.paulantellplumbing.co.uk

JERRY RAYNER :
boiler maintenance :

01985 841461 or 07775 755981

FOR SERVICING AND BREAKDOWN
OF OIL BOILERS

also AGA and RAYBURN

- Competitive rates
- Friendly, helpful and efficient
- Call now for a quote

Wren House

Residence for the retired and elderly

Wren House in Warminster is a long-established, elegant retirement home, specialising in individual care in gracious surroundings. Having just thirteen rooms, each with a private bathroom, we are able to offer the ambience of a family home, together with caring staff and the facilities to enable our residents to enjoy their later years with dignity.

Wren House serves fresh, locally-sourced, home-cooked food. Residents enjoy a varied activity programme which includes a gardening club and our own choir.

Mrs Ellie Simmonds

Wren House Ltd, 32 Vicarage Street, Warminster, BA12 8JF

Telephone 01985 212578

wrenhousewarminster@hotmail.com

www.wrenhousewarminster.co.uk

Seasoned Logs

Hardwood, softwood, barn dried, kiln dried

Kindling and stacking service

All with free local delivery

Tel/text Garry on 07801 179917

Standard load £120 for 1.6m³ or 700kg

All our timber is ethically sourced from local woodland
and is fully seasoned before delivery

Please check out

“woodlandworks”

on Facebook or Instagram

ORCHARD UPHOLSTERY

RE-UPHOLSTERY OF
ANTIQUE AND MODERN
FURNITURE

LOOSE COVERS

❖ FREE ESTIMATES ❖

COLLECTION AND
DELIVERY SERVICE

Telephone Lesley
01373 464870
07725 205017

Sharon's Foot Clinic

SAC Dip FHPT SAC Dip FHPP



Fully insured and highly trained

For the professional treatment of:
Corns · Callus · Cracked Heels
Athletes Foot · Fungal Infections
Thickened Nails · In-growing Nails
Diabetic Foot Care · Verrucas
Nail Cutting · Nail Reconstruction

Contact Sharon on

01373 836734 or 07728 200402

Clinic appointments at

12 Sunny Hill, Nunney, BA11 4ND

Home visits also available

Chapmanslade Parish Council

Parish Council Briefing

Councillor Tim Humphreys reports on the PC's latest activities

The Parish Council met at the village hall on 19th August; the meeting purpose was primarily to consider the multitude of planning applications for piecemeal developments on the Thoulstone Farm site.

Matters arising from the previous meeting of 8th July.

- There has been no response as yet to the call-in request against the planning approval by Wiltshire Council for the Westbury Energy from Waste incinerator
- With the Barter's Farm housing development having now commenced, CIL funding to the Parish Council has been confirmed by Wiltshire Council and payable in three tranches (October and December 2021, and July 2022)
- At the recent CATG meeting, the PC submitted case for street lighting improvement between Cleyhill Gardens and Wood Lane has been given a "priority one" status. An assessment survey is to be arranged to take this forward.

Planning Applications:

There were eight current applications under consideration by Wiltshire Council concerning the ongoing development at Thoulstone Farm (there have since been two further applications submitted).

Applications considered:

- **PL/2021/05743** - Full planning permission Erection of ancillary games room and plant room (revised plans)

- **PL/2021/06585** - Parent Application Prior approval Part 3 Class Q; Agricultural buildings to dwelling houses. Prior Notification under Class Q for a Proposed Conversion of Existing Agricultural Building (Metal Circular Grain Silo) into One Dwelling house (Use Class C3).
- **PL/2021/06568** - Prior approval Part 3 Class Q; Agricultural buildings to dwelling houses (Use Class C3) and for Building Operations reasonably necessary for the Conversion.
- **PL/2021/06379** - Full planning permission (Additional to original Application 19/10721/FUL) Conversion of Existing Farm Outbuilding to Create Single Residential Dwelling. This is an Additional Permission to **19/10721/FUL** which permits the Conversion of Three Residential Dwellings (work having started on site)
- **PL/2021/06381** - Full planning permission Proposed relocation and Conversion of Existing Metal Grain Silo and Extension to include Additional Similar Silos to Create Residential Dwelling.
- **PL/2021/06497** - Full planning permission (Parent Application) Proposed demolition of existing agricultural building and erection of three residential dwellings
- **PL/2021/06380** - Full planning permission Conversion of existing farm outbuilding to create single residential dwelling
- **PL/2021/06496** - Full planning permission Proposed demolition of existing agricultural

building and erection of new indoor swimming pool.

The PC unanimously agreed to object to each of these applications on a number of grounds, being common to those raised at the July meeting when another application relating to the same development was tabled. Points of concern (inter-alia) included:

- Suitability of the existing agricultural buildings for conversion in the manner summarily described within the application documents.
- The extent to which curtilage of the Grade 2 Listed farmhouse extends into the wider farm complex.
- Demonstrable compliance with given planning criteria allowing for permitted development rights under Part 3 Class Q (change of use of an agricultural building to residential)
- Lack of clarity in respect of building operations necessary for the conversion of existing buildings.

The PC has written separately to Wiltshire Council expressing concern that this plethora of recent submissions would suggest a considerable expansion for the site far beyond that originally envisaged by the developer's original proposal two years ago. It is proving difficult to take a holistic perspective on the wider development of this site and its ultimate purpose, though an upmarket holiday let complex could be interpreted from the scale

and nature of the work proposed. The PC requested that Wiltshire Council Planning Department takes a comprehensive look at the site to determine the justification and viability for the considerable change suggested to that originally advised.

Other matters

- The PC expressed their congratulations to Chapmanslade resident Kate French for her gold medal in the modern pentathlon at the Tokyo Olympics.
- Our local MP, the Rt Honourable Dr MP Andrew Murrison, visited the village on 27th July as part of his 'Rural Rides' road tour of the constituency, visiting as many smaller communities as possible. Members of the PC met with him at the Three Horseshoes, taking the opportunity to re-emphasise key local issues including the Westbury Incinerator, traffic problems as experienced within a rural village, and housing development beyond that envisioned by the Wiltshire (housing) Core Strategy.

The next PC meeting is scheduled for 7.30pm on Thursday 9th September.

Minutes of the meeting can be found on the Parish Council website
www.chapmansladepc.org.uk

Tim Humphreys
Parish Councillor



Church and Community Coffee Mornings
Third Thursday of each month
10am to 12pm
The Three Horseshoes
Chapmanslade

Memories of Corsley School

Danywenallt

David Ball recalls his tenure as Headteacher at Corsley School...

During my teaching career I frequently organised educational visits and residential trips for the older primary children. For several years I took parties of 40 children plus parents to the England v Scotland Schoolboys football match at Wembley Stadium, with crowds of 40-50,000 – something far removed from art galleries, museums and theatre trips.

I also took classes of children to residential centres in places like Danywenallt – a delightful former farmhouse by a huge reservoir in the Brecon Beacons and about four miles from Brecon itself.

Several year groups of Corsley children enjoyed a train or coach trip to visit the Danywenallt Study Centre for a week's activities, where John and Ron, the resident teachers, provided a varied programme of exciting educational activities that kept the children happy, interested, physically active and often exhausted – temporarily! Activities during the week might include a days walk over the Brecon Beacons led by these experienced teachers, who explained the geographic features of the area, or a long walk to a spectacular



curtain waterfall where the children had the opportunity to cross the river by walking along a ledge behind the waterfall itself. Nearby the river went underground and the children could experience potholing, clambering through a narrow passage to see the river below the surface. Another walk might take them to a long, bending railway tunnel, no

longer in use and perfect to take the children along with their torches to experience total darkness – something others might experience at 'Big Pit' when the guide, a former miner, would take them down to the coal face and tell them to switch off their helmet lights and

experience total darkness for perhaps the first time, then recount his experiences of digging for coal, complete with pit ponies!

Probably the favourite activity however was saved for the last night at the centre. Ron would show the children a small mammal trap and explain that they were going to do some maths! They were going to take part in an ongoing survey to find out how many, and what kind of small mammals lived in the nearby woodland. In groups of two or three

they placed hay into the trap (to give the mammal a warm bed) and a piece of apple (to provide food and water) and then carefully carried the traps to various points in the woods as the sun sank behind the surrounding mountains. The next morning, packing for home was completed at rapid speed, and then Ron would take them all back into the woods to collect the traps. Some were disappointed as they immediately saw their traps had not been sprung, but, usually 7 or 8 of the 10 were 'occupied' and, back at the centre, excitement would mount as Ron carefully opened each trap inside a plastic aquarium and the occupant was revealed, identified,

weighed and their place of capture carefully recorded. Proud children would photograph their mammals and then take another trip to the woods to release them. On their return to the centre it was straight onto the coach for home!

The next few weeks of the summer term back in the classroom, the children would make their own hand-sewn books and record the events of their weeks visit – an activity which involved English, maths, art and craft, geography, history, and very best handwriting! They'd all had more than enough PE in the Welsh mountains!

Frome Art Society's 'In Company' art exhibition

We are pleased to announce the Frome Art Society's 'Round Tower Exhibition' is back, courtesy of the Black Swan Arts. Waiting more than two years because of COVID-19 restrictions, it's at last happening. The exhibition opens on Friday 13 August and runs to Monday 30 August, at 2 Black Swan Arts, Bridge Street, Frome BA11 1BB. Come and see a diverse selection of affordable artwork from our inclusive, friendly society. All work is for sale including cards and less expensive unframed work.

The exhibition title 'In Company' is a celebration of the opportunity to show collectively our artwork in an actual exhibition rather than 'virtually' on Zoom. Frome Art Society members staffing the exhibition will maintain safe distancing and all visitors will be asked to wear masks, unless exempt, when visiting.

Other than mounting two exhibitions a year, members of Frome Art Society enjoy access to

workshops, talks, demonstrations, the popular programme of summer outdoor painting days in beautiful locations, and the opportunity to upload images of work onto the Frome Art Society website. For more information, visit the Frome Art Society website at

**www.fromeartsociety.co.uk or
www.blackswanarts.org.uk**



Walking through lockdown

A water meadows walk



This attractive village lies off a turning from Cotley Hill roundabout, on the A36 from Warminster to Salisbury. Park up near the church, built in the 11th century on Saxon foundations. It became a Collegiate Church at the time of Bishop Jocelyn of Salisbury and had a Dean and Canons; it was restored by William Butterfield in the 1860s.

Enter the churchyard near the village shop and Post Office, emerge on the Tytherington road and cross into Mill Street. Walk on until it veers left, but go right into Mantles Lane, a dead end. Eventually you walk alongside the Wylde River, until the lane becomes a muddy track between a cottage on the left and the river on the right. You may see swans or even

a kingfisher here. Enter the field ahead and walk a muddier track, with cricket bat willows on your left and the field hedge at your right.

At the field end, there's a mill pond on the right. Go along the river bank until you reach another road to Tytherington, turn right, cross the bridge and stay on the road, passing the former mill itself, three storeys and impressive. Pass that and veer left, cross another bridge and turn left again.

The road you're on bends right and there's a footpath sign on your left, with a track leading to a wooden bridge. Cross it and go through the metal kissing gate at your right, into a field. Follow the track along the field edge, with a hedge on your right. It's a big



open space, but at last there's fencing and a gateway into another field. This field can be very muddy and sometimes has cows in it. Go left, stepping gingerly round and through mud pools until you reach hard ground and can follow the trail diagonally across the field.

At its end is another kissing gate on the left – and more mud! Go through the gate, turn right and walk alongside the Wylde, with a pretty cottage on its far bank. The path leads to another kissing gate.

If you want to explore further, go right here and wander through the fields. If have a map or GPS on a mobile, follow tracks across fields and between hedges; you may even reach Corton village and find a different return route.

If you're staying with the walk, go

through the kissing gate before the open fields and turn left across the footbridge. This is the hamlet of Knook, with the former vicarage gardens on your right. Pass the house entrance and a small iron gate leads into the churchyard, though the church isn't kept open.

You'll reach a crossroads next, and a notice-board at your left; take the track beside it. Stay on that and there'll be a barn with galvanised iron sheeting on your right and, to the left, another galvanised iron building and a wooden bridge. The walk doesn't cross the bridge BUT step on it and look into the shack. I think this building houses redundant equipment for regulating sluice gates, once part of the river scene here. Across the wooden bridge you're



on, there's a seat and, beside the 'private' field at the right, the stone remains of a sluice gate system there.

Return from the wooden bridge and go left, where the track rises and the river falls away left. The trail narrows and you'll pass a house on your right; beyond it, there's a field of scrap metal 'statues'. Now there's a house on your left, with a huge field next and fenced-off woodland on your right. The path you're on runs between two fences and you'll step down onto the old Warminster to Salisbury road. Walk left and keep going till you reach Park Road, ahead of you.

Go that way, passing an impressive house entrance and village playing fields. Across the next junction, the Hospital of St. John is on your right. These almshouses were built in 1472 for Lord Walter Hungerford, Knight of the Garter in 1421 and executor of Henry V's



Will. The original building burned down in 1765 and it was rebuilt in this Georgian style. Your vehicle's along this road, but the Angel Inn's on your left first; see if they're open, or ring before leaving home and be sure of a well-deserved break!



Whitbourne Chapel

*While the Earth remains...
Genesis 8, verse 22*

Services for September – all at 11 am

- 5th Richard Wilson – the Chapel's own preacher
12th Craig Jennings from Coleford
19th Russell Short for our Harvest Service
26th Andrew Coxhead from Clink Evangelical Church

The Harvest Display

[God] did not leave himself without witness, for he did good by giving you rains from heaven and fruitful seasons, satisfying your hearts with food and gladness (Acts 14 verse 17)

I can remember harvest displays set out at the front of the church that included a lump of coal, salt, a glass of water and a loaf of bread, in the shape of a sheaf of corn, made by the local baker. This was a visual reminder of God's goodness to us in providing for our needs and for regulating the seasons, in accordance with His promise: 'While the earth remains, seedtime and harvest, cold and heat, summer and winter, day and night, shall not cease' (Genesis 8 v. 22). Every time we see a rainbow in the clouds we are reminded of that promise.

Thinking of harvest displays, let me tell you

the story of a young boy who was given some food for a display, but it never reached the display. For some reason he was too embarrassed to give the item and, on the way home, hid it behind a telephone box hoping that no one would find out about it. This may seem insignificant but it has been said that 'No sin is to be regarded as small, because the God who forbids all sin is so great.' The book of James in the New Testament says in chapter 2 verse 10: 'For whoever keeps the whole law but fails in one point has become accountable for all of it.'

There is a sequel to that story because some years later, when the boy was about 12, he was in a children's meeting and his conscience was reactivated about that deceit.

The result was that he invited the Lord Jesus Christ into his heart and life.

I know this is true because this writer was that boy.

Let me leave you with a question.

How are you going to respond to God's goodness? He gives us fruitful seasons and satisfies our hearts with food and gladness, but most of all He gave us His Son to be our Saviour (John 3 verse 16).

John Hobson

Visiting preacher at Whitbourne Chapel

Please remember:

If you need help or simply someone to talk to, ring 01373 464244 or 07980 013685 and we'll do our best to help you. Otherwise, visit our website www.whitbournechapel.org.uk or google 'Whitbourne Baptist Chapel'.

Your Local Electrical Services



LAWRENCE FAIRFIELD

Limited

LIGHT, WARMTH, POWER & PROTECTION

Call or email now for a free quote

01373 464577

enquiries@lawrencefairfield.co.uk

www.lawrencefairfield.co.uk



allsorts OF FENCING

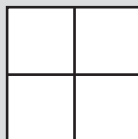
Your local Fencing Specialist

Stock Wire / Post and Rail / Close board
Decking / Patios / Gates / Sheds / Pergola

www.allsortsoffencing.com

01373 832339 / 07710 180551

Also: Topping of Fields and Paddocks



White Horse Windows Ltd

Windows, Doors,
Conservatories and more...

Local company, exceptional standards

10 year guarantee

*Windows Fascia & Guttering
Doors Conservatories*

CERTASS Registered

For a free quotation contact Ryan on

07909 441442 or 01373 302594

ryan@whitehorsewindows.com



KB Landscape

30 years in landscaping

Phone

01373 832371

Mobile

07951 297173

Kevin Brixey - for quality and experience

5 Red Cottages Corsley Warminster Wiltshire BA12 7PS

Landscaping
Patios and paths
Turfing and seeding
Brick and stone walling
Decking and pergolas
Block paving
Gravel drives
Pond work
Fencing

Paul Ledbury

Quality Painting and Decorating

30 years experience

**INTERIOR AND EXTERIOR
GENERAL MAINTENANCE**

5 Hampshire Gardens
Westbury, Wiltshire
BA13 3EX

**Telephone 01373 858163
Mobile 07976 242045**



Lending with Heart and Mind

**Wiltshire Council fund a not-for-profit
loan scheme for homeowners.***

If you have lived in your home for over 5 years and:

- Are over 60; or
- Are in receipt of State Benefits; or
- Have children under 16 living with you.

You may be eligible for a home improvement loan to keep your home warm, safe, and suitable for your needs.

Lendology CIC work in partnership with Wiltshire Council to deliver the council subsidised loan scheme. Our knowledgeable team of advisers will guide you through the process of applying.

To book a no-obligation assessment, or for more information, visit www.lendology.org.uk or call 01823 461099.

Heatherton Park Studios, Bradford on Tone, Taunton, TA4 1EU

*subject to eligibility



Hand made rusted iron
flowers for your garden
Great gift for any
occasion
Annie 07967367942
annie_wild@hotmail.com



Forget-me-not

• GARDENING SERVICE •



Weeding, pruning, planting,
fence painting, etc

01373 464416

07890 850465



Local Electrician

All Domestic and Commercial Work Undertaken
Part "P" Registered NAPIT Approved "Full Scope" Installer
Fixed Wire Electrical Testing and Thermal Imaging Reports
Portable Appliance Testing
Aico Approved Installer for Fire detection
Service/Maintenance Contracts Available

Call us on:

01749 850769 or 07779 429786

Email: ian@fushi-electrical.co.uk

www.fushi-electrical.co.uk



Mobile Foot Clinic



Jana Twinney
Dip FH MCFHP MAFHP

Long, Thickened, Ingrown or Fungal Nails,
Callus, Corns, Cracked Heels,
Athlete's Foot + Diabetic Foot Care,
Massage and Foot Care Advice

**Registered member of the British Association
of Foot Health Professionals**

Fully insured and experienced
Based in Frome and surrounding area

Please phone or email for an appointment

**jana.twinney@gmail.com
07922 679 638**

A view from over the hedge...

Countryside Matters

All good gifts around us...

As I write, it's now 10.30 pm on 18 August and the lights on the combine harvester have gone out after a very miserable day of trying to harvest what's left of the barley crop.

The arable crops have suffered greatly, especially during the last month when heavy downpours of rain have been a regular daily event. High winds and damp grey days have flattened the ripening crop, dropping the seed to the ground making it an easy feed for ravenous rooks and pigeons coming in flocks. Badgers and deer who have hidden in the standing crop for weeks have also devoured a great deal of the seeds.

The tractors and trailers are still busy hauling the grain back from the fields to be stored in a large airy barn, hoping that it doesn't have to be machine-dried, which will incur extra costs.

The hedgerow fruits of rose hips, sloes and blackberries look good, but like the cereal crops, they also need sun to ripen. There are plenty of hazelnuts on the trees but I expect the squirrels will soon find and devour them!

September is the month for damsons, elderberries and sloes, so do go out and get

your share for preserving before our bird population gets them all.

We used to wait for frosts before the sloes were picked, but now, if you prick them and freeze them for a while, then preserve them in gin and some sugar, you'll have a good homemade drink ready in time for Christmas.

In days gone by, Michaelmas Day (29th September), was the time for fairs when farm workers would look for new jobs, tenant farmers would pay their half yearly rent and tenancies were reviewed. It was also the time when most of the harvesting had been completed so the celebrations could begin. Churches were decorated with fruits vegetables, honey, bread, cheeses and any other crops from the local farms and gardens, in readiness for the harvest festival services.

Our local church, St Margaret's, Corsley, will have its doors open to everyone the weekend of 2nd and 3rd October to show that, whatever the weather has thrown at us, we can still show how fortunate we are to be able to enjoy a wonderful harvest.

Judith Helliar



Corsley Reading Room

Your 'village hall'

Chairman, Hugh Deed, reports on the latest happenings at the hall



We were delighted at the number of people who turned up to the FREE August Coffee Morning, so we have decided to make the September one FREE as well!

Coming up in October and November Photographic Exhibition – Closing Down and Opening Up, by Frome Wessex Camera Club, October 22nd to 25th. Free entry, see advert for full details.

Christmas Fair – Saturday 20th November. Reserve the date to buy Xmas presents and more. Further details next month

CRR Meeting Secretary wanted – could it be you??

After many years on the Management Committee of the Reading Room, Jenny Ratty will shortly be leaving the village and has decided to step down as a trustee of the RR later this year. In recent years, Jenny has also been our Meeting Secretary. We would very much like to have someone new to the team take on this role. It can be your choice

as to whether you also become a trustee and participate more fully in the meetings, decisions and RR activities. If you would like to know more, please contact me or Jenny (secretary@corsleyreadingroom.org.uk). Meetings typically occur five or six times a year and are about two hours long.

See website www.corsleyreadingroom.org.uk for more details on all the above and more. To hire see the website or call Gill Parkinson (01373 832322) to discuss.

FREE Coffee Morning

Tuesday 7th September at 10 am with FREE coffee/tea and biscuits for all! Come and meet forgotten village members! If you came for the first time in August, do come again this month.

Please check the website for any late changes!

Hugh Deed

Chairman of Management Committee

Chairman@corsleyreadingroom.org.uk

01373 832897

For up-to-date information such as occasional parish council meetings, church services, previous editions of The Bridge, local clubs and activities, business listings, and other useful information, please visit www.corsleyandthebridge.co.uk Want something added? Just email the Editor with your request!

Small ads

£1 for EACH item for sale or wanted (cash only please) - at one of the two drop-off locations)

Please note: no cash, no advert!

**Please note that the Editor's
email address has changed to
paradisefound86@icloud.com**

Answers to Bob's Bafflers

- 1 Vodka with of course an orange slice to garnish
- 2 The Netherlands (Cornish Gouda is now available)
- 3 Tin
- 4 The French Open (Roland Garros) which is the second of the Grand Slam tournaments
- 5 Ben Nevis, Snowdon and Scafell Pike
- 6 In the ear (stapes or stirrup is 3.33mm long)
- 7 Azerbaijan
- 8 Mrs Malaprop
- 9 James Abbott McNeil Whistler
- 10 With
- 11 Whitby
- 12 The letter 'e', which is the most common letter used in the English language, does not appear even once in the paragraph.

Local organisation adverts

£2 per month for a small boxed advert or £7.50 for a full page. Full page adverts are allocated depending on space available and cannot be guaranteed. All monies must be at one of the two drop-off locations (Bartons Plant Centre or Acres Supply Garden Centre) by **4pm** on the **19th** of the month. Please note: no cash, no advert!

Trade advertising

Annual trade advertisements (12 issues, when space is available)

1 space	(69mm wide x 33mm high)	£22.00
2 spaces	(69mm wide x 66mm high)	£42.00
3 spaces	(quarter page - 69mm wide x 100mm high)	£60.00
4 spaces	(138mm wide x 66mm high)	£75.00
6 spaces	(half page - 138mm wide x 100mm high)	£104.00

Trade advertisement material should be supplied in print-ready format,
to the chosen standard size and correct shape.

For trade advertising enquiries, please contact David James (Trade advert coordinator/Treasurer)
at either thebridge832@gmail.com or 01373 832443.

DRIVE IN AND PICK YOUR OWN FIREWOOD

Woodchip, Mulch
Hardwood Logs, Softwood Logs
Kindling, House Coal, Smokeless Coal
Delivery available



Mon to Fri: 7.30am - 4.15pm

Closed on Sundays & Bank Holidays

Open Saturdays from Sep-Mar only until 12 noon

01985 213507 www.longleat.co.uk/forestry

5% discount for tenants of Longleat Estate



**LONGLEAT
FORESTRY**

cloud
homecare

Quality care and
support in Warminster
and the surrounding
villages



We are a small, Corsley based care provider

**We provide care to people who need support
to remain living in their own home**

**Please telephone or email us, or visit our
website for further details**

Tel. 01373 832 597 enquiries@cloudhomecare.co.uk
www.cloudhomecare.co.uk

Acres Supply



Marine and Tropical

Aquariums, fish, corals, plants, food, substrates, treatments, pumps, filters... we stock everything you need to keep your aquarium in tip-top condition

Acres Supply, Corsley, BA12 7PP

t. 01373 832591

e. info@acressupply.com

w. www.acresaquatics.co.uk

f. [facebook.com/acresaquatics](https://www.facebook.com/acresaquatics)

Ponds and Water Features

Liners, fish, plants, food, treatments, pumps, fountains, filters... we have everything you need to create a beautiful pond for both fish and wildlife

DarlingInteriors

Made to Measure Curtains & Blinds - Bedspreads - Tracks & Poles - Fitting

Choosing new soft furnishings has never been simpler!

We bring an extensive range of exquisite fabrics from leading suppliers to choose from.

All types of blinds supplied & fitted motorized or hand operated.

For the finishing touch we can provide and fit beautifully crafted tracks and poles to complement any window including bays or curved.



Get in touch to arrange your FREE no obligation consultation!

t. 01373 672 359

e. info@darling-interiors.co.uk

w. www.darling-interiors.co.uk