

# The Bridge

September 2017

monthly magazine for the villages  
of Corsley and Chapmanslade



*Pick some litter, come on over to Cinema Corsley, enjoy a Lite Bites lunch, hear about Crowns and Tiara's with the WI, go to some coffee mornings and join in the BIG Macmillan one, there's lots to do in September...*



# Mendip Mowers

## Why Honda?

*There is a simple reason why you will see so many Honda products still hard at work after many years of service; they are built to last.*

### OFFERS AVAILABLE THROUGHOUT THE YEAR

- Mowers • Tillers • Brush cutters
  - Blowers • Chainsaws • Hedge trimmers
- Barn Dried Logs Also Available



GARDEN MACHINERY SPECIALIST

SALES • SERVICE • PARTS



[www.mendipmowers.co.uk](http://www.mendipmowers.co.uk) 01373 832965

Unit 7, Green Farm Industrial Estate, Chapmanslade BA13 4JJ



## Frome Heating Specialists

J L and M W Knight

**Heating and plumbing engineers  
specialising in:**

Oil and gas boiler servicing

Boiler replacement

Energy management

Pressurised hot water systems

Underfloor heating systems

Frome family business established 1964

Stavanger, Corsley, Nr Warminster, Wiltshire, BA12 7QL

**Call 01373 832578**



199876

# The Bridge

monthly magazine for the villages of Corsley and Chapmanslade

## Articles

Please submit articles either by email to [viv.thomas146@btinternet.com](mailto:viv.thomas146@btinternet.com) or by hand (legible handwriting please!) and take them to the drop-off locations at Barbers Plant Centre, Chapmanslade, or Acres Supply Garden Centre, Corsley by the deadline.

News, reports, updates, thank you's, etc, from individuals or local organisations are free – the more the merrier – keep 'em coming!

## File types

Save your files as .doc – please don't send .docx files – I can't always open them successfully.

## Advertising

**Small ads** are £1 for each item whether 'For Sale' or 'Wanted'.

**Events/local organisation ads** (churches, clubs, playgroups, etc) are £2 per month for a boxed advert.

**Full page ads** cost £7.50, are subject to space availability and cannot be guaranteed,

If you are advertising, don't forget to take the fee – cash or cheque in a sealed envelope please, to either of the drop-off points (Barbers Plant Centre or Acres Supply).

**Please note: no cash, no advert!**

## Trade advertising

Please see information on the last page.

## In this issue...

- 9 Bob's Bafflers**  
a cunning quiz
- 12 Science**  
biology: changing the world
- 16 Parish Council briefing**  
Corsley
- Seven Open Doors** **21**  
news from the pews
- Corsley WI** **26**  
news from the ladies
- Parish Council briefing** **32**  
Chapmanslade
- 29 In the potting shed**  
autumn jobs
- 37 Whitbourne Chapel**  
chapel colloquy
- 42 Countryside matters**  
views from over the hedge

## Deadline

**Deadline for articles  
or adverts for the next  
issue of The Bridge is  
4pm 19th September**

**Please note that no  
items will be accepted  
after this date**

---

## September

### Saturday 2nd

Corsley litter pick – 10 am, meet opposite the Royal Oak

### Monday 4th

Corsley Parish Council – quarterly meeting – 7.30 pm, Corsley Reading Room

Parochial Church Council meeting – 6.30 pm, St Margaret's Church

### Tuesday 5th

Village Coffee Morning – 10 am - 12 noon, Corsley Reading Room

### Thursday 7th

Chapmanslade Parish Council – 7.30 pm, Chapmanslade Village Hall

### Thursday 14th

Corsley WI – 7.30pm, Corsley Reading Room, 'Crowns & Tiaras' by Daphne Atkinson

### Thursday 21st

Church and Community Coffee Morning – 10 am - 12 noon, Three Horseshoes  
Chapmanslade

### Sunday 24th

Pub Quiz – 6pm, Cross Keys, Corsley

### Wednesday 27th

Lite Bites lunch – 12.30 pm, Corsley Reading Room

### Thursday 28th

Cinema Corsley - 'Viceroy's House' – 7 for 7.30 pm, Corsley Reading Room

### Friday 29th

Corsley & Chapmanslade joint Macmillan Coffee Morning – 10 am - 12 noon. More info in September edition of The Bridge

## October

### Tuesday 3rd

Parochial Church Council meeting – 7.30 pm, St Margaret's Church

### Saturday 7th

Corsley litter pick – 10 am, meet opposite the Royal Oak

Corsley and Chapmanslade Churches Harvest Supper (Chapmanslade)

### Thursday 12th

Corsley WI – 2.30pm, Corsley Reading Room, OPEN Meeting 'What WILL We Be Eating?' by Professor Nigel Brown

Chapmanslade Parish Council. 7.30 pm Chapmanslade Village Hall



# Diary Dates

## Thursday 19th

Church and Community Coffee Morning – 10 am - 12 noon, Three Horseshoes Chapmanslade

Cinema Corsley - 'Hidden Figures' – 7 for 7.30 pm, Corsley Reading Room

## Wednesday 25th

Lite Bites lunch – 12.30 pm, Corsley Reading Room

## Saturday 28th

Corsley and Chapmanslade Churches Harvest Supper (Corsley)

## Sunday 29th

Pub Quiz – 6pm, Cross Keys, Corsley

## November

### Monday 4th

Corsley litter pick – 10 am, meet opposite the Royal Oak

### Thursday 9th

Corsley WI – 2.30pm, Corsley Reading Room, 'All Wrapped Up For Christmas', a demonstration by Annie Campbell

### Thursday 16th

Chapmanslade Parish Council – 7.30 pm, Chapmanslade Village Hall

Cinema Corsley (film TBA) – 7 for 7.30 pm, Corsley Reading Room

## Corsley litter pickers

We meet opposite the Royal Oak at 10am on the first Saturday of each month. Our next 'pick' is on Saturday 2nd September – do come along and help keep our village beautiful.

*Cath Aylesbury and Sue Taylor*

## Pet and horse owners

From **Friday 15th to Sunday 17th**

**September**, Longleat are hosting over 50 hot-air balloons for a mass ascent, along with a musical night glow on the Saturday evening. Horses and dogs can find hot-air balloons very frightening – please ensure you keep your pets safe during this weekend. Clearly, Longleat cannot predict the route the balloons will take – they go where the wind takes them!

# Cinema Corsley

We are pleased to announce that the first film of the new season showing at Corsley Reading Room (using our new equipment!) is...

## **'Viceroy's House' (Certificate 12A) Thursday 28th September Doors open 7 pm**

Viceroy's House in Delhi was the home of the British rulers of India where, in 1947, Lord Mountbatten is tasked with overseeing the transition of British India to independence. The film's story unfolds within that great house with the Mountbattens living upstairs whilst downstairs lived their 500 Hindu, Muslim and Sikh servants. A great cast is led by Hugh Bonneville

as Lord Mountbatten and Gillian Anderson as his extraordinary wife Edwina. Gurinder Chadha has directed a heartfelt and very personal drama about the partition of India, which shows both the stunning beauty of the country and the people as well as the tragedy when religion and politics collide.

We're also hoping to show a short film to start the evening - with a Corsley theme!



## **Hidden Figures (PG) Thursday 19th October Doors open 7 pm**

In October we will be showing Hidden Figures, which delves into the untold stories of three incredible African American women, Katherine G Johnson (Taraji P Henson), Dorothy Vaughan (Octavia Spencer) and Mary Jackson (Janelle Monáe). The contributions of this visionary trio were central to the US' success in the great Space Race. Known as 'human computers' these brilliant women crossed boundaries of race, gender and known science to put astronaut John Glenn into orbit; an achievement that was the tipping point in America's race against Russia.

Doors open 7 pm for a 7.30 pm start at Corsley Reading Room. Tickets £6 from

Acres Supply or on the door on the night. Refreshments and licensed bar.



# Pears Electricians

Nigel Charteris - BSc (Hons) M.I.E.T.



## Professional Local Electrician

A HIGH STANDARD OF WORK AT REASONABLE RATES

Part P registered with [www.napit.org.uk](http://www.napit.org.uk) - Testimonials and references available

**Faults & Troubleshooting • Repairs & Improvements**  
**Installation Condition Reports • Boiler Wiring**

[www.pearselectrical.co.uk](http://www.pearselectrical.co.uk)

**01985 213314 or 07717 534026**

*Getting married?  
Special occasion?*

*Classic 1960 Hillman Minx Estate car for hire*

*Chauffeur ~ bows ~ flowers ~ champagne*

*Reasonable rates*

*Please contact Amanda on*

*01373 827795 or 07720 673698*



# OAKLEY

## GARDEN MACHINERY

Grove Lane, Marston Trading Estate

Frome, BA11 4AT



**For Sales, Spares,  
Workshop Service  
and Repairs**

Hayter  
Mountfield  
Lawn King  
Westwood  
Stihl  
Honda  
Toro  
Echo  
Husqvarna  
Shindalwa  
Oregon  
and more...

[www.oakleyfrome.co.uk](http://www.oakleyfrome.co.uk)

**01373 467712**

## Bride by Design

**Bridal gowns and accessories**



2 Silver Street  
Warminster, BA12 8PS

Please contact us to  
arrange an appointment  
t. 01985 217216

e. [info@BridebyDesign.biz](mailto:info@BridebyDesign.biz)

[www.bridebydesign.biz](http://www.bridebydesign.biz)

**STUNNING COASTAL VIEWS ON  
CORNISH COAST NEAR LOOE**



Six bedrooms (sleeps 12)

Private access onto beach

Pets allowed

Top class facilities including wi-fi

Rent for week or even long weekend

Downstairs bedroom and shower room

For more info: Sandy Parrish 01373 832522

# The **co-operative** funeralcare

- 24 hour service
- Free bereavement advice
- Pre-paid funeral plans

**WESTBURY** 48 Warminster Road, BA13 3PF  
**01373 858142**

**WARMINSTER** 3 George Street, BA12 8QA  
**01985 220105**

**FROME** 1 Nunney Rd, Frome BA11 4LA  
**01373 473426**



Part of The Southern Co-operative

## ORCHARD UPHOLSTERY

RE-UPHOLSTERY OF  
ANTIQUUE AND MODERN  
FURNITURE

❖ FREE ESTIMATES ❖

COLLECTION AND  
DELIVERY SERVICE

Telephone Lesley  
01373 464870

## Sharon's Foot Clinic

SAC Dip FHPT SAC Dip FHPP



*Fully insured and highly trained*

For the professional treatment of:  
Corns · Callus · Cracked Heels  
Athletes Foot · Fungal Infections  
Thickened Nails · In-growing Nails  
Diabetic Foot Care · Verrucas  
Nail Cutting · Nail Reconstruction

Contact Sharon on  
**01373 836734 or 07728 200402**

Clinic appointments at  
**12 Sunny Hill, Nunney, BA11 4ND**

Home visits also available

# UPVC REPAIRS WILTSHIRE.CO.UK

## FOR PROFESSIONAL WINDOW & DOOR REPAIRS

Are you having a problem with your UPVC windows or doors?

- ✓ Misted glass
- ✓ Broken or faulty window hinges
- ✓ Faulty locks
- ✓ Jammed windows or doors
- ✓ UPVC door adjustments
- ✓ Window and door handles

Call us – we are here to help

All work guaranteed

01373 430010 07795 143228 [www.upvcrepairswiltshire.co.uk](http://www.upvcrepairswiltshire.co.uk)

## the three horseshoes

Open daily from 10AM-11PM  
serving delicious home cooked food  
(12-3, 6-10 Mon-Sat. & all day Sun.)

Enjoy a refreshing drink in our beer garden  
with spectacular views of Longleat and Cley Hill,  
or indulge with one of our regular meal deals  
by the warm open fire on a bitter winter's day.

We organise monthly events,  
featuring live music, comedy + much more!

follow us on Facebook for more details



threehorseshoeschapmanslade



### BED & BREAKFAST, THE PADDOCK £55 A NIGHT

Situated in Corsley Village, quiet and secluded location.

The accommodation is self-contained and has its own entrance.

Shower room on the ground floor and lovely double bedroom  
on the first floor. Breakfast is continental and served at a  
table in your room.

Please call Jill & Malcolm Westgate on 01373 832125

To see more details visit

<http://jillianbrunning.wixsite.com/thepaddockcorsley>

### YOGA CLASSES

Corsley Reading Room

Tuesdays 7-8.30 pm

Wednesdays 5.30-7 pm

(other classes also available)

Jackie Jasper

01373 832301 [yogawithjackiej@gmail.com](mailto:yogawithjackiej@gmail.com)

# Elizabethan Evening 2017

## The Mikado

### Oh what larks we had when Titipu came to town...

The Elizabethan Evening (EE) 2017 looked to the Far East this year to entertain another capacity audience at Manor Farm Corsley with the Mikado.

Firstly a HUGE thank you to all our sponsors, new or old, who make staging the event possible, and then to the sponsor hunter sub-committee whose unenviable task is to schmooze, cajole, brow beat or just beat into submission these sponsors. We love you all dahlings (mwah, mwah).

The performance from Illyria was as always up to their usual excellent standard and with wonderful tonsil twanging and much energy to boot and a supper of local invention and creation went down a storm for the 200+ sensible people who booked early.

Putting on the evening is a story in itself, which one day can be told! Suffice to say that it involves a hardworking, occasionally hard drinking committee of volunteers who not only give up their time but also their lives, homes, kitchens, partners, sanity, clothes and occasionally the ghost, free of charge to keep the evening on track, of which we have now completed 15 years.

The task of shepherding this band of disparate entities has befallen John Helliard yet again this year. He is abetted by the committee's bean counter Philip, who forgot to read this year's memo about costume; Philip - we were doing Japanese, not fusty old Victorian gents!

On the subject of beans, Philip has indicated we have made of profit of just over £4000 this year, which will be dispersed to local good causes, and charities, local and national.

We do have to apologise for the delay in getting hot drinks to the audience during the interval. Our new hot-water boiler was duff and the best it could manage was tepid, so every known heating device at Manor Farm was pressed into action to try and feed the demand for boiling water for the 400 hot drinks in 20 minutes. We even had to ring Hinkley Point to put another fuel rod in the reactor as we were using so much electricity (Claire and Chris can expect a real stinker of an electricity bill this quarter).

Also, due to an unfortunate set of circumstances our erstwhile Chairman, John, was called away at the last minute on the evening. He had been itching (possibly a bad choice of words) to reveal his Brazilian surprise to the assembled audience. For some of those seated on the folding white chairs this surprise was already revealed, as the chairs came in both Portuguese and English. These are chairs that came hot from the Rio Olympics to replace the older wooden chairs which we retired due to their propensity to pinch bottoms and impart splinters into the aforementioned derrieres.

We're not sure what productions we can choose from for next year, but do watch these pages for updates and please do book early. We are limited by licensing conditions as to how many people we can

accommodate on site and as every year the audience grows in number so we are now very close to hitting that maximum.

As usual a fine array of prosthetic limbs (no upper ones this year), discarded nether garments and vehicles were left behind following the performance. Please contact any committee member to retrieve your goodies but be prepared to identify them via a V5C, shoe size, hue of limb or cut and colour of the garment.

Yours in perpetual perplexity and tortured tribulations

Anne Gorra & Dr Watson-Stage,  
spinsters of this Parish

## LIGHT BITES

will be back on  
Wednesday 27th September  
(and every **FOURTH** Wednesday  
of the month)

Come and join us for super soup  
and convivial conversation.

12.30 in the Reading Room

**KEEP THE DATE FREE!**

*note corrected  
dates — the fourth Wednesday  
of the month, not the third!*

## Bob's bafflers

- 1 Which planet is nearest to the sun?
- 2 A flock of geese is known as a gaggle on the ground. How is a flock of geese known in flight, often in a 'V' formation?
- 3 What was the first name of Dr Zhivago?
- 4 Who composed the Brandenburg Concertos and how many are there?
- 5 Which is the largest island in the Mediterranean Sea?
- 6 In the song, what was the last animal the old lady swallowed?
- 7 What is the flag carrier airline of Poland, one of the world's oldest airlines?
- 8 In which series of action films does the hero John McClane feature?
- 9 What do the initials HB on a pencil stand for?
- 10 Which cardinal point on a compass does not appear in the name of any US State?
- 11 Which French phrase has been adopted into the English language meaning to be familiar with or conversant with?

Answers on page 44



**Shake off those pounds and  
dance yourself fit.**

Chapmanslade Village Hall  
Monday 7.30pm - 8.30pm

Longbridge Deverill Village Hall  
Thursday 7pm - 8pm

For all levels of fitness and  
NO experience needed.

For more information please contact  
Amy 07830 119032

## Busy Bees Pre-School Chapmanslade



For children aged 2-5 years  
Weekdays (term time only) from 8 am-5 pm

Please contact Kelly Williams to arrange a  
visit and a free trial session for your child  
Breakfast club and after-school club available  
(term time only)

Telephone 07749 257608  
[busybeespre-school@hotmail.co.uk](mailto:busybeespre-school@hotmail.co.uk)

## Jackdaw Plastering



Phone : 07504977650

Email : [andy@jackdawplastering.com](mailto:andy@jackdawplastering.com)

Web : [www.jackdawplastering.com](http://www.jackdawplastering.com)

*\*Qualified \*Insured \*Clean \*Reliable*

For your  
Heating Oil Supplies  
contact

## KINCH FUELS

at their  
local depot in  
Devizes, Wiltshire

Telephone 01380 727102

*The company you and  
your home will warm to*



## LUXURY PRIVATE CAR HIRE

A locally based, door-to-door, personal  
service for up to six passengers in  
air conditioned comfort  
AIRPORTS • SEAPORTS • ANYWHERE

For bookings, please call  
01985 840088      07903 307734

## WEST COUNTRY SWEEP

Domestic & Commercial Chimney Services

**Andrew Leigh**

07545 822109

[westcountrysweep@gmail.com](mailto:westcountrysweep@gmail.com)





# Downlands

TREE SURGERY

For Expert Tree Care

Telephone Jon Burgess on  
**01985 214320**

Skilled pruning  
Tree felling  
Stump removal  
Qualified and insured

**Free tree health  
survey and quotes**

*Keep active with physiotherapy*

**Alison Rossiter MCSP HPC**

**Chartered Physiotherapist**

30 years experience in physiotherapy specialising in the treatment of muscle and joint problems. Helping people to improve their health and fitness through treatment, exercise and advice.

Home visits can be arranged.

Daytime and evening appointments available.

*If you need help please contact:*

**Beckington Physiotherapy 01373 831483**

**Email: arossiterphysio@gmail.com**

**www.beckingtonphysio.co.uk**

**DAVID EDMUNDS & CO**  
ACCOUNTANTS & TAX CONSULTANTS

*Specialists in the self-employed, small and medium business and self assessment.  
Preparation of accounts, VAT, PAYE, income tax and corporation tax returns.*

*Personal, friendly service  
Evening appointments by arrangement*

Telephone 01225 334447

Home 01373 832430

**TREVOR  
& JON** *by Amy*

Unisex Hair Salon

Unit 2 Stone Mill, Trowbridge BA14 8BU

**01225 754001**

trevorandjonbyamy@outlook.com

**Kevin O'Mahony**  
Quality Painter and Decorator

Internal and external painting

Artexing

Wallpapering

Coving

Hand painted kitchen units

07724 349447 or 01985 301197

email kevo7743@googlemail.com

www.thewarminsterpainter.co.uk

**Biology: changing the world**

# What is Norovirus?

Many of us will have watched Isaac Makwala of Botswana run against the clock in an extra 200m heat at the World Athletics Championships last month, and been delighted that he made it to the final. This made the news on TV and in the national papers. He had been banned from the stadium the previous day because of a norovirus infection. Why were the authorities so concerned that they banned him?

Norovirus, also known as Norwalk virus or the winter vomiting bug, is the most common cause of gastroenteritis and estimated to affect 600,000 to 1 million people in the UK each year. It is highly infectious and about half the people exposed to the virus will become ill with sudden nausea, diarrhoea, vomiting and abdominal pain. The symptoms develop in 12 – 48 hours and last up to 3 days. The disease is highly unpleasant, but self-limiting and does not usually cause serious complications.

So, how do you catch norovirus? It can be through food poisoning with undercooked shellfish, such as oysters, clams or mussels. These are so-called “filter feeders” which accumulate the virus if it is present in the sea, and this is a particular problem if mussel or oyster beds are near sewage outlets. However, thorough cooking will kill the virus. The most common route of infection is through person-to-person contact.

Contact with the vomit or faeces of an infected person is quite often the source.

This can be indirect, through towels, clothing or even contaminated surfaces, such as those in a toilet.

Inadequate handwashing followed by food preparation is another possible route, and some major outbreaks have been traced to food prepared by one infected person. The disease is common among semi-closed communities, such as care homes, schools, prisons, cruise ships and, as we saw from last month’s athletics championships, hotels.

Norovirus exists in several different strains, under such names as Mexico virus, Southampton virus, Hawaii virus, and Sydney virus, indicating the geographic source of that particular strain. Infection with one strain can provide immune protection for 4 to 8 years against that strain, but there is little or no protection against other strains. A vaccine has been developed in Japan against the two most common strains infecting humans. This is undergoing clinical trials, but it will be several years before this is approved and available.

Although, in the developed world, norovirus is not normally life-threatening and causes a short-term period of unpleasant illness, it is a very common disease and has a huge economic impact because of individuals taking a few days off work. In addition, norovirus causes up to 200,000 deaths



across the world each year. The vaccine is urgently needed.

So, what should we do to minimise the chances of catching norovirus? Don't eat raw or undercooked shellfish (and look for those restaurants with a 5\* food hygiene rating!). Be careful in handling the clothes, bedding, bath towels, etc. of anyone suffering from gastroenteritis. Clean bathroom and toilet surfaces with bleach if used by an infected person. Wash your hands well, using soap and warm water. If you are infected, do NOT visit your GP or hospital, but the NHS recommends to looking after yourself at home by drinking

plenty of fluids, taking paracetamol for aches, pains or fever, and getting plenty of rest. You should also be careful not to contaminate surfaces and to minimise contact with others.

We may not be running in a World Championship, but avoiding norovirus infection is something to which we can all aspire.

Nigel Brown is happy to receive comments, questions and suggestions for future articles at [nigelbrown48@gmail.com](mailto:nigelbrown48@gmail.com)

# *Harvest Suppers*

*Saturday 7th October, 7 for 7.30pm*

*Chapmanslade Village Hall*

*Saturday 29th October, 7 for 7.30pm*

*Corsley Reading Room*

*Bring your own drinks (glasses provided)*

*£7 for adults and £3 for children*

*Tickets and further details available from*

*Claire da Costa 832113 or Laura Gates 832825*

*for the Corsley Supper*

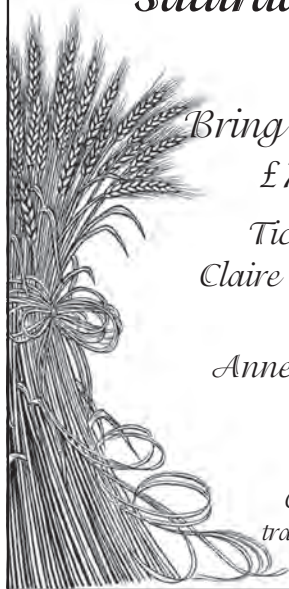
*Anne Good 832505 or Phil Jefferson 832845*

*for the Chapmanslade Supper*

*or from PCC members*

*Come and join us as we celebrate harvest in the traditional way with good food and good company.*

*We look forward to seeing you there!*



# ALLSOP CARPETS & FLOORING

DOMESTIC ♦ COMMERCIAL ♦ INDUSTRIAL

Christchurch Street West, Frome BA11 1EB

TEL: 01373 463866 MOBILE: 07887 953014

[www.allsopcarpets.co.uk](http://www.allsopcarpets.co.uk)

## Chapmanslade Village Hall

Can be hired for all your functions:  
parties, weddings, meetings, classes, etc

For hiring information, phone  
Ken Davies 01373 832034 or email  
[chapmansladehall@blueyonder.co.uk](mailto:chapmansladehall@blueyonder.co.uk)

## Traditional Mole Catcher

07512 681111

01373 836350



## KEYVOLUTION

Locksmith and  
Carpentry Services  
serving the Wiltshire Area

Warminster based company offering locksmith and carpentry.  
Police cleared, reliable and honest service.

Any other quote beaten.

- BS3621 lock upgrades for house insurance approval
- Garage doors, locks and running gear
- Lock repairs – specialising in Chubb mortice locks
- Upvc double-glazed door and window locks fitted – even old ones!
- Door or window locks opened destructively or non-destructively (indemnity required for these services)
- Digital code locks supplied and fitted
- All types of carpentry work – mostly 2nd fix and maintenance

Check out my website

[www.keyvolution.co.uk](http://www.keyvolution.co.uk)



or call Ben on 07748 214799 or 01985 219799

## Hypnotherapy for you!

Solution Focused Hypnotherapy is a safe, practical  
therapy and can help you to:

- Feel better about yourself
- Achieve work, play, lifestyle balance
- Improve many areas of your life

Fiona 07801 436633

[fiona@balancehypnotherapy.co.uk](mailto:fiona@balancehypnotherapy.co.uk)

[www.balancehypnotherapy.co.uk](http://www.balancehypnotherapy.co.uk)

Balance  
Hypnotherapy  
Solution Focused Hypnotherapy

## White Horse Windows

Windows, Doors, Conservatories and  
more...

Local Company, Exceptional Standards  
10 year guarantee

Windows Fascia & Guttering  
Doors Conservatories

CERTASS Registered

For a Free Quotation call Ryan on  
07909 441442 or 01373 302594



[nickcranston@acertreesurgeons.co.uk](mailto:nickcranston@acertreesurgeons.co.uk)

[www.acertreesurgeons.co.uk](http://www.acertreesurgeons.co.uk)

01373 832026 or 07590 986261

85 High Street, Chapmanslade

- FREE advice and quotes from a friendly, professional and accredited company fully insured and Council approved
- We are highly skilled and qualified to undertake all tree work from fruit tree pruning to technical dismantling of huge tree structures near buildings as well as hedge trimming and care.
- We also sell logs!

# BARTERS PLANT CENTRE

**'Passionate about Plants'**

Shrubs ♦ Perennials ♦ Trees ♦ Roses ♦ Conifers  
Climbers ♦ Fruit Trees ♦ Hedging ♦ Soft Fruit ♦ Seeds  
Bulbs ♦ Basket Plants ♦ Bedding ♦ Vegetable Plants  
Christmas Trees ♦ Holly Wreaths  
National Garden Gift Tokens



## Opening Hours

Mon to Sat	9 - 5	(March to October)
Mon to Sat	9 - 4.30	(November to February)
Sun	10 - 4	(March to June + December)

Just off A36 in Chapmanslade, Wilts, BA13 4AL  
01373 832694 [www.barters.co.uk](http://www.barters.co.uk)



## JONATHAN CORP

Painter and Decorator  
General House Maintenance  
Sturford Mead Farm, Corsley  
Warminster, Wiltshire, BA12 7QU  
01373 832213

## Postlebury News R Gould – Newsagent

All papers and magazines  
Home delivery service

01749 850556 07979 452677

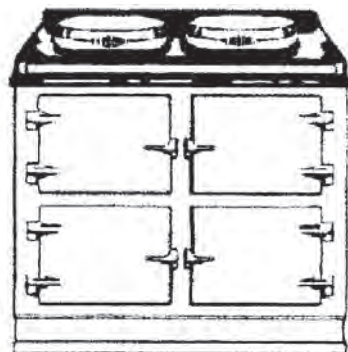


## T A P Services

Telephone 01373 463106

[tapservices@btinternet.com](mailto:tapservices@btinternet.com)

Authorised Stanley Service Agent  
Oil Range Cooker & Oil Boiler Servicing



# Range Cooker Servicing

**Corsley Parish Council**

# Parish Council Briefing

Chairman, Neil Britten, rounds up the activities of the PC during August

This Summer the PC has had a relatively quiet August, with one occasional meeting called at short notice to consider two planning applications. An update is also included below on the application for the artificial hedge at 83a Lane End and Tascroft Court.

## **Planning applications**

**17/06376/LBC**

**Malthouse, Court Lane, Lyes Green**

*Conversion of roof space to include two new dormers, relocation of existing dormers, conversion of garage into kitchen, extension of veranda, installation of conservation rooflights, replacement of clay tiles with slates, removal of chimney, replacement of windows and other internal and external alterations.*

Malthouse is a grade 2 listed building which has had several alterations completed in recent times. This application seeks approval for changes which are intended to combine additions to the internal accommodation, sympathetically improve the internal layout and change some external features (roof and windows) to the benefit of the exterior appearance.

The PC had no objections to the proposal.

**17/06496/FUL**

**36 Temple, Corsley**

*Erection of timber summerhouse*

This is an application to replace two existing garden old sheds by an attractive wooden summerhouse on the same site.

The PC agreed unanimously that there should be no objection to this application.

**17/03946/FUL**

*Erection of boundary fence panel, designed to mimic the appearance of a hedgerow*

In the August brief the PC's strong objection to this proposal was reported. Since then Wiltshire has approved the application, after Highways rescinded their initial objection advice and supported the application as meeting the minimum Highways junction visibility standards.

The PC has written to the Planning Director reiterating its objection, with an accompanying paper and photos elucidating the risks consequent on the decision. The text of the letter is included below and the paper can be accessed through the Bridge website:

*"Corsley Parish wish to object most strongly to your decision (reference A) to approve the above planning application and request that*

[www.corsleyandthebridge.co.uk](http://www.corsleyandthebridge.co.uk)

*you reconsider the decision on the grounds that insufficient consideration has been taken of the impact that the fence in question will have on road safety. Our original objection was registered at reference B.*

*The original planning restriction on development on the property of No 83a was imposed in 1976 in light of the traffic conditions at that time and has now twice been challenged by the current owner of No. 83a, against Corsley Parish Council advice and strong and very concerned views of local residents. On both occasions supportive Wiltshire Highways advice has been over-riden, though it is recognised that, this time, Highways gave the Planning Department two quite contradictory sets of advice, the first very clearly stating that the splay visibility is "inadequate" as a result of the hedge. The second advice accepted the hedge on purely technical grounds.*

*Corsley Parish Council believe that approval of the application is an incorrect decision as it takes insufficient consideration of the local conditions at the A362 junction and the risks so created. Parish Councils are in the best place to understand such local circumstances and attached to this letter is a detailed presentation of the key factors, plus some pictures which, unlike those in reference C, give true indication of the situation faced by drivers at the junction.*

*At a meeting on 31st July, the Parish Council moved to urge you to reconsider the decision at reference A"*

Copies of the letter and papers have been sent to Fleur de Rhe Philipe, the application Case Officer and the Highways Department Officer for the application.

## **Tascroft Court**

**17/01124/OUT**

**Land south and east of Tascroft Court**

## **and north of Cannimore track, Tascroft Court Warminster**

As reported in August, the objections of the Parish Council to the planning application, relating to the Centre Parcs traffic queues on entry days and the lack of consideration of this issue in the application had been recognised as valid by the Highways Authority.

Now that the basic plan for Tascroft had been approved by Wiltshire, the PC agreed that the concerns about Centre Parcs would now be directly pursued with Wiltshire Highways authority.

## **Future meetings 2017**

Quarterly Meeting      4 September, 7.30 pm

Quarterly Meeting      4 December, 7.30 pm

Please note that the 4th September meeting agenda will include an update on Corsley broadband and a presentation and discussion on road safety issues on the A362 by local residents.

There may be occasional meetings held at short notice; please watch the village notice-boards.

Neil Britten, Chairman  
01373 832515 or 07810 764714  
[neil.britten@btinternet.com](mailto:neil.britten@btinternet.com)

For up-to-date information such as occasional parish council meetings, church services, previous editions of The Bridge, local clubs and activities, business listings, and other useful information, please visit  
**[www.corsleyandthebridge.co.uk](http://www.corsleyandthebridge.co.uk)**  
Want something added? Just email the Editor with your request!



# Clean-it

Recommended by



Carpet and upholstery cleaning specialist

01373 462059 07779 247961 [www.clean-it.biz](http://www.clean-it.biz)

Home ~ Private ~ Lettings

An offer fit  
to make your  
pet smile!

**Garston**  
Veterinary Group

Get your teeth into our dental offer  
this September & October...

To help all our existing and new  
clients we will be offering

20% off all  
dental surgery

A lifetime of regular  
and free dental  
monitoring for your pet

Further 10% off for  
Wellness Plan clients

Other than obvious dental pain  
your pet may have

- Bad breath
- Difficulty eating
- Stopped regularly grooming themselves
- Excessively grumpy or unhappy

All dentals requiring  
extracts include:

- General anaesthetic
- X-Rays - to monitor  
root blood pressure and  
prevent dehydration
- Oral home care kit

Please contact your Garston Surgery for more information

Frome Melksham Trowbridge Warminster Westbury  
01373 452225 01225 817779 01225 754021 01985 213350 01173 301448  
[www.garstonvets.co.uk](http://www.garstonvets.co.uk)



Domestic Appliance Sales and Repair Service

## Domesticare

21 Keyford, Frome

[www.domesticarefrome.co.uk](http://www.domesticarefrome.co.uk)



01373 467351

## Childminder

Ofsted registered

Full and part time. Before and after school  
Holiday spaces available

Pick-up and drop-off offered

Call 01373 832854 or 07883 025476  
[d.m.rawlings@outlook.com](mailto:d.m.rawlings@outlook.com)

**JERRY RAYNER**  
boiler maintenance

01985 841461 or 07775 755981

FOR SERVICING AND BREAKDOWN  
OF OIL BOILERS  
also AGA and RAYBURN

- Competitive rates
- Friendly, helpful and efficient
- Call now for a quote

## Pippa's Pet Care

Dog Walking · Cat Sitting  
Small Animal Care

07745 482187 01373 839074

[Pippaflack@icloud.com](mailto:Pippaflack@icloud.com)

Facebook/Pippa's Pet Care

## DRIVE IN AND PICK YOUR OWN FIREWOOD LOGS

Woodchip, Mulch,  
Hardwood Logs,  
Softwood Logs,  
Kindling, House  
Coal.

Delivery available.



Mon to Thurs: 7.30am - 4.15pm Fridays: 7.30am - 3.15pm  
Closed on Sundays & Bank Holidays

Open Saturdays from Sep-Mar: 8.00 am to 12.00 pm

☎ 01985 213507 🌐 [www.longleatforestry.co.uk](http://www.longleatforestry.co.uk)



**LONGLEAT  
FORESTRY**

# Corsley broadband update

The new cabinet by St Margaret's Church has been installed and is being commissioned. The expectation is that those residents living by the church, down towards Lyes Green as far as by the Cross Keys, and down a good part of Deep Lane will be able to order fast broadband by early October. This is the cabinet for which the Corsley Broadband Project Ltd contracted using the financial contributions made by Longleat, Elizabethan Evening and Corsley Parish Council.

Due to contractor problems the power supply has yet to be made available for the cabinet to be sited on the A362/ Deep Lane junction. A date is expected for this by the end of August, after which things should proceed quickly! This cabinet will serve the reminder of Corsley Heath and most of the outlying hamlets (Temple, etc).

Details and precise timings on the areas of Lyes Gren and parts of Deep Lane not covered by the above and existing cabinets are still being worked on by BT Openreach.

If you want to be sure of the status of your property go to: [www.communityfibre.com](http://www.communityfibre.com).

[bt.com/#linecheck](http://bt.com/#linecheck), enter your postcode and then select your house. Experience has shown us that some of the BT data is incorrect so if you find your house's status is appearing a little 'odd' compared to your neighbours, please let me know and I will use my contacts to see if this is an error. Also check the website [hdwebsites.wixsite.com/broadband](http://hdwebsites.wixsite.com/broadband) for the latest information I have from BT Openreach about their plans/ actions, you can also contact me through that site.

Finally, orders are being taken for high-speed broadband for the two areas in the village which are now served by the cabinets at Corsley Heath and Lane End. So far, some 57 properties have signed up. If you want to sign up then use the website above to check your house, you can then register through that site. You can also make contact with BT Openreach direct or any other supplier to get details of the options and costs of upgrading to the fast lane!

*Hugh Deed*  
*Corsley Broadband Project Ltd*

## Party at Corsley on Saturday 19th August

The party held in a marquee on the Showfield was a private event; it was not organised or associated with the Corsley Show in any way. Some residents complained about the noise going on into the early hours of Sunday whilst some were awed by the free aerial firework display!

For up-to-date information such as occasional parish council meetings, church services, previous editions of The Bridge, local clubs and activities, business listings, and other useful information, please visit **[www.corsleyandthebridge.co.uk](http://www.corsleyandthebridge.co.uk)**  
Want something added? Just email the Editor with your request!

# NOTEBOOKS2

Desktop PC - Laptop - Smartphone - Tablet

Apple - Macbook Pro / Air - iMac - iPhone  
iPad - Mac Mini

Repairs / Upgrades / Accessories

Notebooks 2 Go / Tech Repair  
51 Haynes Road, Westbury, BA13 3HD

Tel - 01373 865400

Email - [support@notebooks2go.co.uk](mailto:support@notebooks2go.co.uk)

## Cross Keys

Community Free House

Lyes Green, Corsley, BA12 7PB

Bar Open all day!

Food

Monday to Saturday

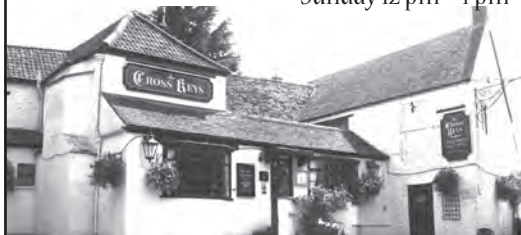
11 am - 11 pm

Sunday 11 am - 10 pm

Monday to Saturday

12 pm - 2.30 pm and  
6 pm - 9 pm

Sunday 12 pm - 4 pm



**01373 832406**

[www.crosskeyscorsley.co.uk](http://www.crosskeyscorsley.co.uk)

Facebook @CrossKeysInnCorsley

## Corsley Tennis Club



New members welcome –  
all ages, all abilities

Three hard courts available all year

Weekly junior coaching available

Low subscriptions

Contact either

Emma Fox 07512 009580

Sue Newell 01373 825560

[www.corsley-tennis.uk](http://www.corsley-tennis.uk)

## Little Cuckoo's Pre-School

Lyes Green, Corsley, BA12 7QH

Friendly, dedicated pre-school in the heart of the  
countryside for children aged 2-5 years

Monday, Wednesday, Thursday and Friday  
9 am - 3 pm during term-times

We accept 2-year-old funding in  
accordance with Wiltshire Council guidelines

Mother and Toddler group Tuesday mornings  
10 am - 11.30 am during term-times

**SESSIONS AVAILABLE NOW**

Speak to Hayley McMahon

Pre-School Manager on 01373 832298

Find us on facebook or visit [www.littlecuckoos.co.uk](http://www.littlecuckoos.co.uk)

**A free trial session is available**

Registered Charity Number 1064800



**CHRIS SEVIOUR**  
Building Services

**07894 708949**

[cmseviour@gmail.com](mailto:cmseviour@gmail.com)

Roofing, Loft conversions,  
Extensions, Plastering,  
Natural stonework



## S B Services



Contact Sean

**07828 671566**

*For your garden maintenance  
and home improvements*

# Seven Open Doors

Dear Friends,

Necessity dictates that I have to write this letter for the Parish News early in August, which means I have no idea what will be headline news when you read this. The world continues to be what feels like a very unstable and confusing place. Meantime the seasons roll on, the sun continues to rise, the moon to wax and wane and some things never change. Dogs have to be fed and walked, the English weather is true to its reputation and as I write is cold and wet, so damp and horrible in fact that I'm sitting here with a hot water bottle and have just made myself a hot chocolate to try to warm up a bit! And, it being September, it's the start of a new academic year.

However many Septembers come and go and however many years it is since I had children at school, this month will always speak to me of new beginnings; new shoes, new school uniform, gloriously pristine, well, for a few days anyway. Because I had four children it used to take me ages to get them and their accompanying lunches, homework bags, PE kit and goodness knows what else, ready for school; I seem to remember having to get up at the unearthly hour of 5.30am to manage it all. Now, my grandchildren are at school and my son is in charge of the proceedings; how quickly those years have passed. As Paul Simon put it so succinctly in his beautiful song Leaves that are Green 'time hurries on'; it certainly does. And sometimes time hurries on in such way that we seem unable to actually inhabit our days in any meaningful way, nor appreciate our surroundings.

I know I have written about the glorious countryside around us many times but I cannot help but refer to it again as we approach Autumn, my very favourite time of year. There is something so magical about the way in which the season unfolds and deepens as the weeks pass. Below is an excerpt from a poem by Siegfried Sassoon. It's written from the perspective of a soldier in the trenches of the First World War, who, in the midst of utter horror, is dreaming of autumn in England:

He sniffs the chilly air; (his dreaming starts), He's riding in a dusty Sussex lane; In quiet September; slowly night departs; And he's a living soul, absolved from pain. Beyond the brambled fences where he goes, Are glimmering fields with harvest piled in sheaves, And tree-tops dark against the stars grown pale; Then, clear and shrill, a distant farm-cock crows; And there's a wall of mist along the vale, Where willows shake their watery-sounding leaves, He gazes on it all, and scarce believes, That earth is telling its old peaceful tale; He thanks the blessed world that he was born.

There is something so poignant about the Sassoon reference to 'brambled fences' in the poem; the fences that are part of his life in the trenches are barbed wire pointers to hell, the brambled fences in the poem give way to 'glimmering fields' where 'the earth is telling its old peaceful tale.' More than ever in our world we need to allow that peaceful tale to be told, and to do all we can to make it a reality. And we too need to thank the blessed world that we were born.

Love and prayers, Pauline

# September Church Diary

## Sunday 3rd September: Trinity 12

8am at St Michael the Archangel, Brixton Deverill: BCP Holy Communion

9.30am at St Margaret of Antioch, Corsley: Eucharist

10.30am at St Peter & St Paul's, Longbridge Deverill: Morning Worship



## Monday 4th September

6.30pm at St Mary's, Temple, Corsley

Parochial Church Council



## Tuesday 5th September

7.30pm at Honeysuckle Cottage, Corsley

After Alpha Tuesday Night Group – details from Richard on 832594



## Sunday 10th September: Education Sunday

9.30am at St Philip & St James', Chap: Messy Church Family Communion

10.30am at St Mary the Virgin, Kingston Deverill: Eucharist

11am at St Mary's, Temple, Corsley: Matins

5pm at St John the Baptist, Horningsham: Harvest Service



## Monday 11th September

10.30am to 12pm – details from Phil on 832845

Time to Think Home Group



## Sunday 17th September: Trinity 14

9am at St Mary's, Temple, Corsley: BCP Holy Communion

10.30 at St Michael the Archangel, Brixton Deverill: Eucharist

10.30 at St Margaret of Antioch, Corsley: Family Worship



## Tuesday 19th September

7.30pm at 129d Forest Walk, Chapmanslade

After Alpha Tuesday Night Group – details from Richard on 832594

## **Thursday 21st September**

**10am to 12pm at the Three Horseshoes, Chapmanslade  
Church & Community Coffee Morning**



## **Sunday 24th September: Trinity 15**

**9.30am at St Philip & St James', Chapmanslade: Eucharist  
10.30am at St Peter & St Paul's, Longbridge Deverill: Eucharist**



## **Monday 25th September**

**10.30am to 12pm – details from Phil on 832845  
Time to Think Home Group**



## **Wednesday 27th September**

**12.30pm to 1.30pm at the Reading Rooms, Corsley  
Light Bites Soup Lunch – donations in aid of the Warminster Foodbank**



## **Sunday 1st October: Trinity 16**

**8am at St Michael the Archangel, Brixton Deverill: 1662 BCP Communion  
9.30am at St Margaret of Antioch, Corsley: Eucharist  
10.30am at St Peter & St Paul's, Longbridge Deverill: Family Worship**

## **Education Sunday – 10th September**

We shall be celebrating the life of our school and church on Education Sunday. There is much to celebrate and we hope that the service will allow the school to showcase some of their extraordinary talent by helping us with the service which will be an informal Messy Church service with a Family Communion. As usual there will be refreshments after the service. Everyone welcome, especially families with children at Chapmanslade School, but if you have ever been involved with our school please do come along and help us celebrate Education Sunday.

## **Welcome, Congratulations & Farewell**

We welcome to the church family Lorna Hilleary who was baptised at Horningsham on 13th August; and Amelia Kendal who was baptised at Corsley on 13th August.

Congratulations to Iain Danks and Megan Willis who were married at Horningsham on 26th August.

The funeral of Ruth Jones took place on 4th August at Longbridge Deverill. We offer our prayers and sympathy to the family.

## Harvest

Our Harvest celebrations take place throughout October this year. The first Harvest service will be on Sunday 1st October at St Margaret's. On Saturday 7th October Chapmanslade will hold it's Harvest Supper at the Village Hall; tickets from either Anne Good on 832505 or Phil Jefferson on 832845. On Sunday 8th October there will be a Harvest Messy Church Family Service at Chapmanslade and Harvest Matins at Temple. The Harvest celebrations will come to an end on Saturday 28th October when Corsley hold their Harvest supper at the Reading Rooms; tickets from either Claire da Costa on 832113 or Laura Gates on 832825. We find it necessary to hold two Harvest Suppers as there is no location big enough in the Parish to seat everyone if we held just one supper.

## Parish Giving Scheme

For many years our churches have been wonderfully supported financially by people giving to the church on a regular basis by standing order. Technology moves on and we now have the ability of a new Parish Giving Scheme which is being provided through the Diocese and offers some advantages to both the giver and church over the existing scheme. Givers will be able to use direct debits, and amend these direct debits as required, and choose if so desired to increase their giving by the rate of inflation. For the church the advantage is a quicker payment of Gift Aid as well as full documentation of all gifts received. If you would like to join this new Parish Giving Scheme please contact either Judith Helliar (832803) or Keith Muston (832755) for more information. We will try to answer your questions! If you wish to remain on the existing standing order scheme you may do so!!

---

Rural Dean	Rev Pauline Reid revpauline@btinternet.com	01985 841290
Lay Pastoral Assistants	Richard Dean Barbara Hughes Claire Tanner	01373 832594 01373 832273 01985 218099
Pastoral Visitor	Alan Hopkinson	01373 832393
Churchwardens	Ian Buick John Helliar	01373 832318 01373 832803
Deputy Churchwardens		
St Margaret's	Judith Helliar	01373 832803
St Mary's	Harcourt Gough	01373 832039
St Philip & St James'	Janet Aylesbury	01373 832752
PCC Secretary	Phil Jefferson	01373 832845

Copy for Seven Open Doors should be sent to Keith Muston at  
themustons@btinternet.com subject 7ODs or phone 01373 832755.

If you would like to receive weekly news of Church events and activities, please send your email address to the above, with subject 'Through the Open Doors' or download a pdf from the 'churches' pages at [www.corsleyandthebridge.co.uk](http://www.corsleyandthebridge.co.uk)

Expert repairs for  
PCs & Laptops  
Macs  
iPads  
Tablets



Frometech

Tuition available  
Macs, PCs and iPads

Take the stress out of IT  
Call Today!

Security Review of  
your computer

01373 470170  
[www.frometech.co.uk](http://www.frometech.co.uk)

## Registered Osteopath

Philip Sefton D.O.

‘Treatment from head to toe’

Over 20 years' experience of treating back,  
neck, shoulder, muscular and joint pain

Manor Road · Marston Estate · Frome · BA11 4BN

01373 455993 [www.phillseftonosteopath.co.uk](http://www.phillseftonosteopath.co.uk)

## Ski Apartment – French Alps

Ski in/ski out – sleeps 6

Well equipped – immaculate condition

For more information or to book online visit:

**w.** [www.ski-les-cimes.co.uk](http://www.ski-les-cimes.co.uk)

**f.** [facebook.com/ski.les.cimes](https://facebook.com/ski.les.cimes)

**e.** [lesleygolledge@gmail.com](mailto:lesleygolledge@gmail.com)

**t.** 01373 832533

## npv plumbing & heating

Installation • Servicing • Repairs

Bathroom and tiling specialists

All plumbing and heating work undertaken

Our fully qualified plumbers offer all general  
plumbing services from boilers to bathrooms.  
We will gladly advise clients on the most suitable  
products for their property – be it heating  
systems, boilers, radiators, bathrooms or showers.

07738 940355

[www.plumbersfrome.co.uk](http://www.plumbersfrome.co.uk)

## Hypnotherapy

If you need help with:

Anxiety

Depression

Phobias (such as flying or spiders)

Panic attacks

Relaxation

Weight management

Smoking cessation

Natural childbirth

Confidence

Public speaking

Exam nerves

and much, much more...

Call ANJI HOLLAND on  
07944 647 978 / 01373 832 898  
to enquire or just for a chat

[www.hollandhypnotherapy.com](http://www.hollandhypnotherapy.com)

With practices in Chapmanslade and Bath

I am a member of the National Council for Hypnotherapists  
and am bound by their code of practice and ethics

**Corsley WI**

# August news

Carol Seward rounds up the August meeting and announces some forthcoming events



Members of Corsley WI were greeted with a wonderful display of baking, craftwork, photographs, flowers and vegetables in the Reading Room at our biennial Flower, Handicraft & Produce Show held in August. Judging took place during the afternoon and the trophies were presented to the winners in the evening.

Caroline Higham and Amanda Bain were joint winners of the Photography & Painting award; Amanda Bain won the Homecraft and also the Handicraft Cups; Judith Helliard was the winner of both the Vegetables and Flowers sections; Carol Seward won the Gardening Club prize for the Best Arrangement in a Cup & Saucer and Caroline Higham was the winner of the Theresa Watts Cup for the Best Coloured Picture. The Overall winner with the most points gained across all classes was Amanda Bain. Each individual class winner also received a small prize. Thanks go to everyone who worked so hard on the day to make sure that all went well and thank you to all who put in entries to our show.

As usual, details of the various events organised by the Wiltshire Federation were available at the meeting. One new talk is called "Please Don't Buy an Electric Car". The report by our delegate of the events at the Annual General Meeting held in Liverpool in June, was read by Carol

Seward. After the usual business matters and other notices, we were treated to cakes and scones with our refreshments.

The meeting ended with an auction of some of the produce, flowers, cakes and marmalades from the show.

The next meeting is on **Thursday 14 September at 7.30pm**, when we are looking forward to hearing a talk by Daphne Atkinson on "Crowns and Tiaras". The competition is for an evening bag.

We would love for you to come and visit us, new members are always welcome. Our meetings are usually held on the second Thursday of the month in the Reading Room at Corsley. Summer meetings start at 7.30pm and from October to March they begin at 2.30pm. The exact times are mentioned in this monthly WI meeting report and also in The Bridge Diary Dates or you can ring Carol Seward on 01373 832446 for information.

If you would like further details of our **Bridge Club, Gardening Club or Lunch Club**, please contact Pauline Scott on **01985 215760**, as the venues vary each month. These events are open to everyone!

# All day Macmillan Coffee Morning



**Friday 29th September**

**10am to 4pm**

**Barters Plant Centre, Chapmanslade**

**(with thanks to Di and Leigh)**

**Bring-and-buy cake, produce and small gifts stalls**

**For more information, please contact Judith Helliar on 01373 832803**

# Chapmanslade Motor Services

**Vehicle repair  
and servicing**

**Brake  
specialist**

**MOT preparation  
and repairs**



**Batteries  
Exhausts  
Tyres**



*Quality service at competitive rates*

**FREE** ~ wheel balancing and tracking with new tyres

**FREE** ~ courtesy car

Electronic diagnostics available – most makes covered

Green Farm Industrial Estate, Chapmanslade

01373 832188 or 07711 256927





**01373  
455911**

**CLEANING & MAINTENANCE 2000 LTD**

## **OUR SERVICES INCLUDE**

- Domestic Cleaning
- Commercial Cleaning
- Upholstery Cleaning
  - Carpet Cleaning
- One off Spring Cleans
- Garden Maintenance
  - Home & Garden Clearance

 [www.busybees2000.co.uk](http://www.busybees2000.co.uk)   
[info@busybees2000.co.uk](mailto:info@busybees2000.co.uk)

**JOHN E S JONES**

**GENERAL  
BUILDER**



Carpentry, painting and  
decorating, extensions, uPVC,  
facias and gutters, fencing,  
decking and patios

**Also general repairs**

Telephone 01373 832600

Mobile 07074 832600

**Look forward to next spring...**

# Autumn jobs for the garden

Enjoy the last of the summer show in your garden and prepare some new ones for next year!

- Buy spring bulbs for next year. Most bulbs, including daffodils, hyacinths, lilies and small bulbs are best planted this month or in early October. Tulips are better planted towards the end of October
- Give evergreen hedges a final trim to ensure they are neat for the winter
- Now's the time to go around your garden collecting seeds from perennials and annuals. Collect seed heads in paper bags and leave them in a warm place to dry for a few days, before cleaning and storing in small envelopes. Some gardens that open to the public offer seed-collecting days – a great way to find something unusual. Most seeds are best sown in spring
- Sweet pea lovers may find that sowing seed in autumn produces stronger plants. Do not soak the seeds as they are liable to rot. Use seed or potting compost and sow the seeds in root trainers, sweet peas tubes, pots or trays. It has been found that dark coloured seeds germinate well in fairly damp compost, but pale seed require compost that is only just moist. Cover the containers with glass or put them in a propagator and keep at around 15°C (59°F). When the seedlings appear transfer them to a cold frame. Pinch out the growing tips when the plants are about 10 cm (4 inches) high
- Shrub roses and ramblers can easily be propagated from stem cuttings at this time of year. Take a length of stem about 30cm (12 inches) long and trim it off just below the bottom leaf. Remove the soft tip just above a root joint. Take off all but the top two or three leaves and push the cuttings into a well dug trench in the garden to about half their length. They should be left for 12 months to root and develop
- If rambler and climbing roses have got a bit out of hand, spend a bit of time tying them in.
- Aerate the lawn with a fork or special tool then apply an autumn lawn food to nourish your lawn through the coming winter months.
- You can continue to re-seed bare patches on your lawn. It's also a good time of year to prepare the ground for sowing a new lawn, while the earth is still warm
- Your summer bedding will probably still be looking so good that you can't bear to throw it out yet. Keep them going until they look tired. Remember that you can over winter many tender plants. Take them out of their pots and brush off most of the old compost so that you can trim back the roots. Also trim the top growth. Then place them in a tray with some damp, but not saturated, peat covering the roots and store them in a frost-free place.

*Rob White*

*Acres Supply Garden Centre, Corsley*

# TEA & sympathy

Considerate catering at a difficult time

*All our food is homemade, we provide delicious teas, sandwiches and cakes through to more elaborate options.*

*We offer a truly bespoke, caring and professional service.*



Telephone Kim Clark on 01373 832151 or 07843 056916

e-mail [kim@teaandsympathy.uk.com](mailto:kim@teaandsympathy.uk.com)

[www.teaandsympathy.uk.com](http://www.teaandsympathy.uk.com)

## CHANTRY CONSTRUCTION

stone walling • patios

drives • extensions

*prompt reliable service*

*mini digger and driver for hire*

**01373 836787      07855 343388**

COMPUTER & LAPTOP REPAIRS  
UPGRADES / SYSTEMS & LAPTOPS

VIRUS REMOVAL / BROADBAND  
WIRELESS / NETWORKING



FAST, FRIENDLY, PROFESSIONAL SERVICE  
COMPETITIVE RATES  
ONSITE OR WORKSHOP

CCO CompTIA

call  
**01373 302901**

[www.ntscomputing.co.uk](http://www.ntscomputing.co.uk)  
[help@ntscomputing.co.uk](mailto:help@ntscomputing.co.uk)

### LAPTOP REPAIRS

We also replace  
laptop screens,  
keyboards,  
CD-DVD drives,  
fix overheating  
and more

## Forget-me-not

• GARDENING SERVICE •



Weeding, pruning, planting,  
fence painting, etc

01373 464416

07890 850465

## Do you need a plumber? Call...



## Paul Antell Plumbing

07890 366832

01373 467427

Professional, reliable, friendly and local  
[paulantellplumbing@talktalk.net](mailto:paulantellplumbing@talktalk.net)  
[www.paulantellplumbing.co.uk](http://www.paulantellplumbing.co.uk)



www.darchoil.com

## BOILER SERVICING & REPAIR

**All our technicians are  
OFTEC registered and approved**

Call us on **01935 473302** for an instant quote or visit [www.darchoil.com](http://www.darchoil.com), fill out the form and one of our team will call you back during office hours

- Boiler servicing on-demand or as part of a Contract Service Agreement
- Servicing of oil, commercial and domestic boilers undertaken
- Group discounts available on request – call us for information

Call us on **01935 473302** or email **info@darchoil.co.uk** for more information

## EVERGREEN GARDEN SERVICES

Garden maintenance and landscaping, lawns, strimming, hedging, pruning long and short term maintenance, patios fencing, turf and seeding.

Over 20 years experience in horticulture, landscaping and estate management.

**Contact Ben Hale**

**01373 825495**

**07879 492283**



## Rose Knight



Dog and cat  
minding service

**01373 464904**

**07773 435254**

**knight\_rosemary@sky.com**



## Seasoned Logs

**free local delivery**

**Tel / text Garry on 07801 179917**  
**loads from £110.00**

James, Rob and Adam former Employees of  
**ROGER PATCH LIMITED**  
Are pleased to introduce:-

**CMP COMPLETE LIMITED**

**GENERAL BUILDERS**

**19 Swaledale Road, Warminster, BA12 8FH**

**Contact James: 07801 868288**

**Email: [cmpcompleteltd@gmail.com](mailto:cmpcompleteltd@gmail.com)**

**Chapmanslade Parish Council**

# Parish Council Briefing

Chairman, Keith Muston, rounds up the PC's activities

As I write this article the Parish Council has not had a meeting since June. The next meeting is on August 31st and will be reported in the October Bridge.

## **New housing proposal**

At our next meeting we will be discussing the proposal from Wiltshire Council (WC) to zone land in Chapmanslade for new housing. It is a requirement that WC identifies land for housing and demonstrates that there will be sufficient new housing to meet government targets. The current proposal for discussion is for up to 35 houses at the Barter's site. WC have discounted Green Farm for housing and they are not enthusiastic about a site at the Frome end of the village but this site is not ruled out. Clearly the PC will take note of the analysis of the questionnaire in deciding our response to WC.

## **Weight restriction**

We shall continue to pressure both Wiltshire Council and Highways England regarding the ineffective signage at the slip road on the A36. As I write these notes on the 17th I can report that this morning I had to assist when a French articulated lorry turned left into the village and stopped at the weight limit. I assisted him to reverse and go back down the slip road to the A36 and continue on his journey to Frome. Articulated lorries reversing across that junction are very much a safety hazard!

## **Village plan**

We hope to be able to discuss the analysis of the Village Plan Questionnaire at our next meeting. There was an excellent response and we thank everyone who completed a questionnaire.

## **Planning applications**

There are two applications to be considered at the next meeting.

The first is a single-storey extension to 10 Cleyhill Gardens – planning application 17/04325/FUL.

The second is a revision to the previously approved application to build a car-port at 53 High Street – planning application 17/07384/FUL. The revision is to include a study in the roof-space of the car port.

## **Highways**

Two issues were raised at the meeting. We continue to have problems with ineffective gullies and the Chairman will make further representation to Wiltshire Council. The other issue was the cutting of the grass at the lay-by. The Chairman reported that this area of grass is not on the schedule for grass cutting and he will discuss further with Wiltshire Council.

## **Neighbourhood Watch**

Wiltshire Police and the Wiltshire Neighbourhood Watch scheme are now fully committed to an online messaging system to provide alerts about local crime.

Chapmanslade Neighbourhood Watch scheme will in future be based around this online system as this is the quickest and most effective means of informing communities and householders of criminal activity so that individual protective measures can be taken.

The PC encourages anybody wishing to participate in Neighbourhood Watch to sign in to these alerts at [wiltsmessaging.co.uk](http://wiltsmessaging.co.uk). You will see that a Chapmanslade scheme already exists covering the Parish area, and you can either join this or as an individual. You will be able to select what you see, although you cannot filter out alerts for Warminster and Westbury which tend to be the bulk of the messages.

Alerts involving Chapmanslade and the immediate local area are also manually filtered and forwarded to the village Facebook page, and an automatic link is in the process of being established to the village website.

Stay safe and secure by easily accessing alerts about criminal activity in the area.

Any questions, contact Phil Holihead at [phil.holihead@gmail.com](mailto:phil.holihead@gmail.com)

### Speeding

The Parish Council is very aware that traffic issues are a matter of great concern in the village. The Police and Crime Commissioner for Wiltshire and Swindon announced in early August that there was £40,000 to be awarded to local communities for safety and crime protection projects. At short notice, the PC submitted a bid for money to purchase two speed indicating devices for the village. Each device costs around £3,000. We have not been advised of the outcome of our bid so will report to you on whether we have been successful next month.

*Keith Muston, Chair*  
01373 832755  
[themustons@btinternet.com](mailto:themustons@btinternet.com)

## Chapmanslade Cream Teas

A lovely relaxing afternoon was enjoyed by many punters at Chapmanslade Cream Teas and Croquet. Lots of games of croquet were enjoyed, while Wendy, helped by her daughter Caitlin, slaved in the kitchen making many batches of fabulous savoury and sweet scones. Wendy's homemade chutney enhanced the flavour of the cheese scones, and diets were forgotten with jam and cream spread liberally on the sweet scones! (jam first – is that Devon or Cornwall's preferred method?). Many compliments were received about how delicious they were, especially being brought warm from the kitchen!

Ken was running the bar with the addition of Pimms to tempt people away from the teas and coffees served by the ladies – Carol, Gwen and Denise!

There was a wonderful atmosphere as people chatted and caught up with friends and made new acquaintances. The weather was kind -dry and not too hot or cold!

Thanks, must also go to the men on the hall committee. Adam especially for preparing the croquet and boules courts. Roy, Frank, Budgie, Ken for putting up the gazebo, and carrying out all the chairs and tables and to Chris Page for general dogsbody!

Hope to see you all again next year, and if you missed it this year perhaps we'll see you next time?



## Cross Keys News

Corsley's very own community-owned  
free house

As autumn approaches, there are lots of exciting events planned at The Cross Keys. We're sure you'll find something to enjoy. If you can't make it to one of our events, please support your community pub and call in for a drink or meal - you're sure of a friendly welcome.

The next Theme Evening will be on **Monday 18th September** and will be a **wine tasting evening**. There will also be a selection of cheeses to try from our local suppliers. We will be tasting around 10 different wines and an expert will be on hand to host the evening. If there are any wines you'd like to buy, we can arrange to have them delivered the next day. The cost is £15 per person and **places need to be booked by Friday 15th September**.

The usual menu will be available throughout the evening for anyone not taking part in the tasting event.

Our **Quiz Nights**, held on the **last Sunday of each month** are a popular occasion. Why not make up a team with your friends or neighbours? Starting at 6.30pm; a maximum of 5 people per team at a cost of £2 per person, or £5 per person to include a light supper of chips and

sandwiches. Book your place for **Sunday 24th September** by calling the pub.

The Christmas menu will be available on our website, bookings are already being taken. Smaller portions of our menu are available for children or those with smaller appetites and we stock a comprehensive selection of gluten-free options.

**Please note the kitchen  
will be closed at lunchtime on  
Monday 2nd October**

### Opening hours

Monday – Saturday 11 am to 11 pm  
Sunday 11 am to 10 pm

### Food served

Monday – Saturday  
12 noon to 2.30 pm and 6 pm to 9 pm  
Sunday 12 noon to 4 pm

\*\*

Keep checking the website [www.crosskeyscorsley.co.uk](http://www.crosskeyscorsley.co.uk) or our Facebook page Cross Keys Inn Corsley for details of all these events and other news. Alternatively, contact the pub on 01373 832406 to book a table. We look forward to seeing you soon.

For up-to-date information such as occasional parish council meetings, church services, previous editions of The Bridge, local clubs and activities, business listings, and other useful information, please visit **[www.corsleyandthebridge.co.uk](http://www.corsleyandthebridge.co.uk)**  
Want something added? Just email the Editor with your request!

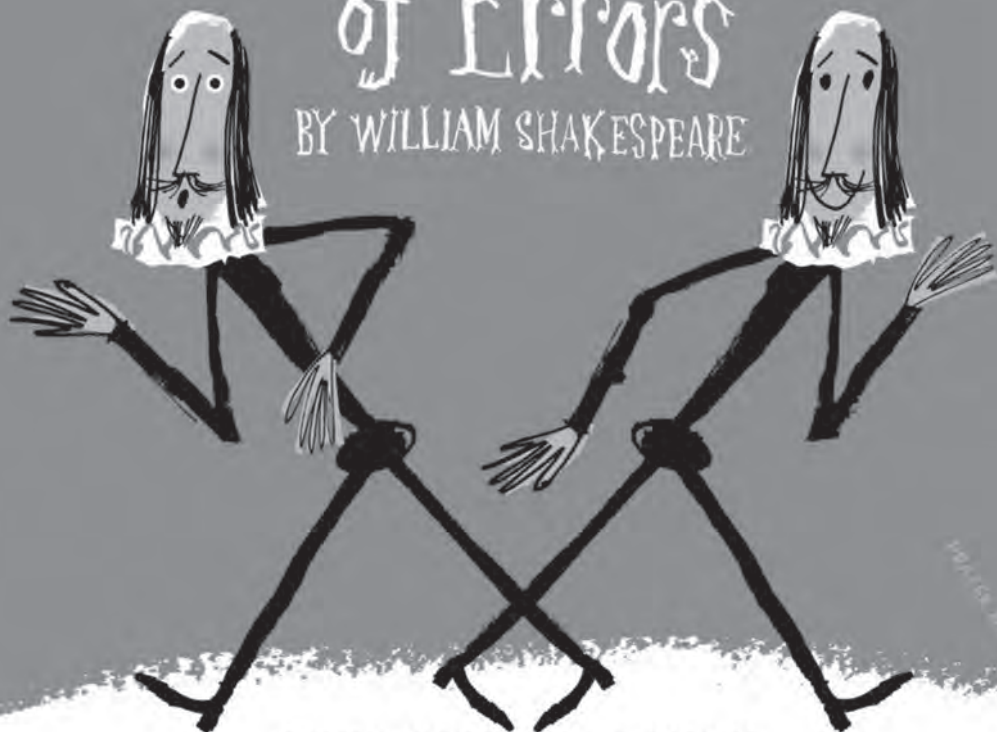
26th  
Season!

Equity  
Theatre Society of Great Britain

# ILLYRIA

## The Comedy of Errors

BY WILLIAM SHAKESPEARE



THE ELIZABETHAN PLAYHOUSE  
MANOR FARM, CORSLEY, BA12 7QE

Sunday 10 September 2017 at 12.00pm

Tickets: [illyria.uk.com](http://illyria.uk.com) (+£1.95 transaction fee) or 01373 832 113

All tickets £30 including lunch and drinks.

For discounts as part of "Shakespeare's Weekend" visit:

[www.theelizabethanplayhouse.com](http://www.theelizabethanplayhouse.com)

Performance approx 2hr 00mins (inc 20min interval)

Seating is provided. Cancellation in the event of hurricane only when performance will be rescheduled. Tickets are non-refundable.

## Steve Dayman-Johns

### Driving Instructor

Condensed Courses and  
Gift Vouchers available

Tel 01373 865422 - Mob 07730 445648

email [stevekdj@gmail.com](mailto:stevekdj@gmail.com)

## anatomy clinic

Beauty, Chiroprody, Holistic

28 East Street Warminster BA12 9BN



t. 01985 219122

w. [anatomyclinic.co.uk](http://anatomyclinic.co.uk)

f. [anatomy clinic](http://anatomyclinic)

## Dashing Dusters

- Cleaning and ironing to a high standard
- General domestic assistance
- Commercial cleaning
- Reliable
- Reasonable rates
- References available

01373 832484 (evenings)

## M W Garden Services

20+ years experience

A tailor made service for all  
types of garden maintenance

Insured and CBI's checked

[mark22.weaver@mypostoffice.co.uk](mailto:mark22.weaver@mypostoffice.co.uk)

Telephone 01373 832854

Mobile 07921 818452

## Piano Lessons

*All standards welcome*

**Debbie Rickhuss**

Teacher of Pianoforte and Theory

Contact 01373 832829

07747 499990

[rickhuss@tiscali.co.uk](mailto:rickhuss@tiscali.co.uk)



## Hardwood logs for sale

(cut to size if required)

**FREE DELIVERY**

**R M Log Supplies**

Beckington

Call Robin on

**07876 621929**

# Whitbourne Chapel

*God... 'sendeth rain on the just and the unjust' Matt 5.23*

## We need the rain!

I always chat when I meet people while out walking and, mostly, they chat back. The British, of course, begin conversations with the weather! If it's raining – and we've had some real stair-rod storms since the schools closed – most people moan. I always say, "We need the rain!" Occasionally, this upsets others; they snap, "Haven't we had enough?" Sorry, folks, but no, we haven't. If I could include photos with this writing, you'd see what I mean. Walking, as I do, at different places in Dorset, Somerset and Wiltshire, I'm aware just how dry our landscape has become. During yesterday's Wylde walk, I saw many streams with no water in them at all, while a recent walk in the meadows at Wells disclosed the same thing, and a wander near Shaftesbury showed the same pattern of drought again. Next time you're in Frome, look at the waterway passing in front of the Blue House – I haven't seen it so low in water in 38 years living locally.

I thank God mankind doesn't have control of the weather. Can you imagine the chaos that would ensue? It's bad enough that the global warming situation has been caused by us and our neglect of the perfect setting – Earth – God gave us in the first place. We can't deny the damage we've done and continue to do, when ski-slopes and icy mountains are giving up the dead buried on them for years, because of

rising temperatures and melting ice caps. Next time we have a wet day, please don't grumble about it. Go out and enjoy it, dance in it and thank God for giving us everything we need – including rain!

## Chapel works

The back rooms at Chapel - the kitchen and 'facilities', the back hall and the school room - are all being decorating at present. That's the beauty of having a teacher, James Mead, in the congregation! New flooring and new doors are being sourced by his sisters, Treasurer Anna Mead and Rachel Carr. Their Dad, Chapel Secretary Ray Mead, is planning a 'Work Party' to trim the hedges and Corsley Pippin trees, and their Mum Jenny wields the strimmer and keeps the grounds looking good. What a talented and hard-working family! Why not join us one Sunday morning (tea, coffee and biscuits served at 10.45!) and view the progress?

## Bible weather quiz

- 1 What was the weather like when Benaiah killed a lion? *2 Samuel 23.20*
- 2 Ezekiel prophesied what sort of weather for the Day of the Lord? *Ezekiel 30.3*
- 3 During the great plagues on Pharaoh what came with thunder? *Exodus 9.23*
- 4 What drives rain away? *Proverbs 25.23*

*Gill Redman 01985 215062  
email paradiselost@btinternet.com*

## Regular times

**Services** every Sunday morning at 11.00 for about an hour (coffee served at 10.45)

**Chapel Prayer** meeting every Sunday morning from 10.20 - 10.40

**Communion** on the first Sunday of each month at 12 noon for 15 minutes

**Bible study sessions** as announced



## COMPUTER PROBLEMS?

**01373 812804**

Email  
Advice for new users  
Anti-virus defence  
Web sites  
Custom programming

Networks - home & office  
Home tuition  
Web access  
Privacy & security  
Repairs

[www.technojeeves.com](http://www.technojeeves.com)

[info@technojeeves.com](mailto:info@technojeeves.com)

No Job Too Small



### Local Electrician

Part "P" registered NAPIT approved  
Domestic and Commercial Work Undertaken  
Third Party Testing

Call for a Free no obligation Quotation

Tel: 01749 850769

Mobile: 07779 429786

email:

[ian@fushi-electrical.co.uk](mailto:ian@fushi-electrical.co.uk)

[www.fushi-electrical.co.uk](http://www.fushi-electrical.co.uk)



## E G MARTIN LTD Heating Oil Distributors

Telephone 01373 822784

Victory Road, West Wiltshire Trading Estate  
Westbury, Wiltshire, BA13 4JL

## WESTERN SKIP HIRE

Telephone 01373 865247

Victory Road, West Wiltshire Trading Estate  
Westbury, Wiltshire, BA13 4JL



## Windows, Doors & Conservatories

- Free quotes from our local experts
- Strengthen your home's security
- Reduce your heating bills
- Excellent offers

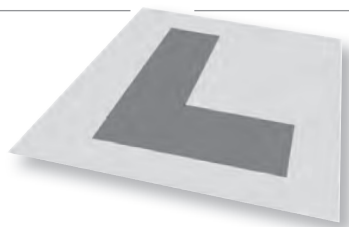


**01985 215566**  
[www.newwindowsltd.co.uk](http://www.newwindowsltd.co.uk)

**New  
Windows**



# Tales from the passenger seat



Recently there have been a number of changes and announcements regarding learner drivers and changes to the existing driving test format. The changes to the current test are not due to commence until December 4th and there may yet be a few slight alterations to the proposed format. I shall give a more full idea of the various changes next month. However, I am getting feedback from a lot of pupils who are worried about the introduction of using/ following a sat-nav as part of the new test requirement.

In reality, there is nothing to worry about, since it is the examiner who will set up and programme the sat-nav; all the pupil is required to do on the test is simply follow the determined route. So, not difficult and the only real difference is that instead of listening to directional instructions from the examiner, the pupil will hear them from the sat-nav.

There has also been a change to motorways regarding learners; it is now legal (but there is no test requirement), for learners to drive on motorways but **ONLY** only in a dual-controlled car e.g. with a qualified instructor. Learner drivers are most definitely **NOT** allowed on motorways in their own cars. My personal view is that this is not such a good idea; at what stage might one decide to take a learner on a motorway? Since many instructors, including myself, give motorway lessons when pupils have passed their test, this negates the need to do it before.

Learners at any stage of their learning process are perfectly capable of doing a dangerous/random act (perhaps hitting the brake pedal instead of the accelerator by mistake) which, although can be corrected/ dealt with at more normal road speeds, we all know that such an act on a motorway with cars travelling at 70 and more mph, would be incredibly dangerous.

BBC Radio recently interviewed me about the above and also asked if I had a solution. I suggested that the government could introduce a law requiring all pupils, once they have passed their test, to be required to have, say, four hours tuition with an instructor on a motorway, who would sign off an authorised document declaring that this had been done. The form could be sent to DVLA, who would issue a licence with a category 'M'. Any licence holder passing their test after such a law was passed, would, if found driving on a motorway without a category 'M' licence, be breaking the law.

Such a mandatory requirement would ensure everyone had some professional guidance before being allowed to drive on a motorway.

I suppose we shall have to wait and see whether an accident involving a nervous learner on a motorway will have to happen before the government rethinks their idea...

*Steve Dayman-Johns*

# TOENAIL CUTTING REFLEXOLOGY

IN YOUR OWN HOME

ALICE LEWIS

Telephone 01373 229335

# NEED HELP WITH YOUR GARDEN?

Hedge cutting • Lawn mowing  
Strimming • General gardening

Call Rob Clements

Tel 01373 832683 Mob 07586 337118

## Wren House

Residence for the retired and elderly

Wren House in Warminster is a long-established, elegant retirement home, specialising in individual care in gracious surroundings. Having just thirteen rooms, each with a private bathroom, we are able to offer the ambience of a family home, together with caring staff and the facilities to enable our residents to enjoy their later years with dignity.

Wren House serves fresh, locally-sourced, home-cooked food. Residents enjoy a varied activity programme which includes a gardening club and our own choir.

Mrs Ellie Simmonds

Wren House Ltd, 32 Vicarage Street, Warminster, BA12 8JF

Telephone 01985 212578

wrenhousewarminster@hotmail.com

www.wrenhousewarminster.co.uk

## ST DAVIDS WHITSAND BAY CORNWALL



Holiday Let  
Sleeps up to 8  
01373 464870

www.stdavidswhitsand.co.uk



## Karina

Mobile Hairdresser

Tel. 01373 832823

Mob. 07742 690337

## Paul Ledbury

Quality Painting and Decorating

30 years experience

INTERIOR AND EXTERIOR  
GENERAL MAINTENANCE

5 Hampshire Gardens

Westbury, Wiltshire

BA13 3EX

Telephone 01373 858163

Mobile 07976 242045

# CLARION

electrical

Part P registered & guaranteed



*Making household electrical circuits work safely*

clarionelectrical@btinternet.com

01985 216641 07766 355237

*Fifteen  
years in  
the trade*

## RICHARD ROBBINS

**City and Guilds Trained Gardener**

*All aspects of Garden work undertaken*

**07510 130083**



allsorts  
OF  
FENCING

Your local Fencing Specialist

Stock Wire / Post and Rail / Close board  
Decking / Patios / Gates / Sheds / Pergola

www.allsortsoffencing.com

01373 832339 / 07710 180551

Also: Topping of Fields and Paddocks

## Black Dog Farm Bed & Breakfast



You will find a friendly welcome and a hearty breakfast in our listed Georgian Farmhouse. The quality en-suite bedrooms contain everything you need to ensure a comfortable stay.

01373 832858

Black Dog Farm, Chapmanslade,  
Wiltshire, BA13 4AE

## Your Local Electrical and Property Services

Call or email now for a  
free quote 01373 464577  
enquiries@lawrencefairfield.co.uk

**LAWRENCE  
FAIRFIELD**  
Limited



www.lawrencefairfield.co.uk



## KB Landscape

30 years in landscaping

Phone

**01373 832371**

Mobile

**07951 297173**

**Kevin Brixey - for quality and experience**

5 Red Cottages Corsley Warminster Wiltshire BA12 7PS

Landscaping  
Patios and paths  
Turfing and seeding  
Brick and stone walling  
Decking and pergolas  
Block paving  
Gravel drives  
Pond work  
Fencing

**A view from over the hedge...**

# Countryside Matters

The Corsley Show is over for another year! How fortunate we are that we have so many willing helpers to keep the Show on the road and, that as one weary team hands on the baton to the next generation, changes come about. With those changes comes a vibrancy and enthusiasm which must be encouraged. Thanks must go to everyone who helped on the day, to the team who work so hard all year with the planning and marketing before the great day and on the days following on the big clear-up.

The weather since mid July when I last wrote has been a real headache for farmers, including the Hares family, when cutting the grass for silage on the Showfield.

The dry spring was followed by a very hot few weeks when arable crops such as oilseed rape, winter wheat and barley all matured early: just as the combine harvesters were ready to roll, heavy storms hit the West Country and crops were flattened. Once this happens, much of the grain is lost back onto the soil and the yields harvested need drying, adding extra costs to a much-reduced crop.

As hay needs at least five days of good weather to be made properly, it has been nearly impossible to get it mowed, dried, bailed and safely in the barn between the

storms. Inevitably, much-loved horse hay will be at a premium this coming winter.

Sadly, our calving paddocks are getting very muddy and although we always like our autumn calving herd to give birth as naturally as possible out in the fresh air on clean dry ground, it is becoming necessary to prepare the covered barns with fresh, warm, dry straw for the imminent arrivals of strong healthy calves and for the welfare of their mothers.

The autumn tints are already showing in our woodlands with good crops of wild berries on elder, holly and ivy which will help to feed our birds and small mammals through the winter.

Our summer visiting and breeding birds are now preparing for their long journey south, filling the sky in large and small flocks and resting on the telegraph lines

Young pheasant and partridge chicks are becoming more independent out in the woodland, so please control your dogs whilst walking in the woods.

It is hoped that the maize crop which has had an ideal growing season will lift our spirits as it is harvested at the end of the month.

*Judith Helliard*



## Corsley Reading Room

## Your 'village hall'

Chairman, Hugh Deed, reports on the latest happenings at the hall

The weather stayed dry long enough for the repairs to be done to the outside wall on the A362 so we can now plan to decorate the inside area of the gentlemen's toilets, disabled toilet and entrance lobby in due course.

The first **Cinema Corsley** for the new season is on **Thursday 28th September**; future dates being **19th October, 16th November** and **7th December**. See the advert elsewhere in this edition of The Bridge for details of what films are showing, buying tickets, etc.

The IT Club restarts on 27th September at 10 am.

The observant and knowledgeable in the village will have noted that Vanessa Hyde's house is up for sale. The committee is keen to hear from anyone who would be interested in joining to take on her responsibilities as Treasurer, or take over the bookings lead role from Gill P so she can take over as Treasurer. Please do consider

putting yourself forward!!! The hall needs the committee and the committee needs to represent the village and have more members.

**Early notice for your diary**

The **AGM** is on **November 8th at 7.30pm**; why not come along? We are interested in your views if you do!

If you would be interested in joining the committee please let me or Jenny Rutty know, or talk to any member. If you have any ideas or suggestions, please contact any of us.

The hall and facilities are available to hire. Full details about the hall and its facilities including how to hire are on the website or call Gill Parkinson to discuss. Please see our website **[www.corsleyreadingroom.org.uk](http://www.corsleyreadingroom.org.uk)**

*Hugh Deed*

*Chairman of Management Committee  
Chairman@corsleyreadingroom.org.uk or  
01373 832897*

.....

### Events run by the Corsley Reading Room Management Committee

Coffee Morning:

*First Tuesday of the month 10 am - 12 noon*

IT Classes/Club:

*27th September at 10 am - 12 noon*

Corsley Cinema

*Our first film is 'Viceroy's House' on*

*Thursday 28th September, 7 for 7.30 pm*

.....

### Regular events run by other organisations

Lite Bites Lunches: *FOURTH Wednesday of the month at 12.30 pm*

Yoga: *Tuesday and Wednesday evenings*

Pilates: *Tuesday afternoons*

*Committee members include: Vanessa Hyde, Jackie Jasper, Sue Kerfoot, Gill Parkinson, Jenny Rutty, Jill Westgate, David Carruthers.*

# Small ads

£1 for EACH item for sale or wanted (cash only please) - at one of the two drop-off locations)

**Please note: no cash, no advert!**

## FOR SALE

Hotpoint **dishwasher** (silver) – 12 place setting – **£50.**      **01373 832641**

## FOR SALE

Solid pine **bookcase**– 114cm x 70cm – **£40.**      **01373 832641**

## FOR SALE

Two **armchairs** with covers and cushions – in good clean condition with no marks – **£40** (will sell separately)      **01373 832160**

## Answers to Bob's Bafflers

- 1 Mercury
- 2 A skein
- 3 Yuri
- 4 J S Bach composed six
- 5 Sicily
- 6 Horse
- 7 LOT (Polskie Linie Lotnicze LOT S.A.)
- 8 Die Hard
- 9 Hard Black
- 10 East
- 11 Au fait
- 12 1992

---

## Local organisation adverts

£2.00 per month for a small boxed advert or £7.50 for a full page. Full page adverts are allocated depending on space available and cannot be guaranteed. All monies must be at one of the two drop-off locations (Barbers Plant Centre or Acres Supply Garden Centre) by **4pm** on the **19th** of the month. Please note: no cash, no advert!

---

## Trade advertising

Annual trade advertisements (12 issues, when space is available)

1 space	(69mm wide x 33mm high)	£22.00
2 spaces	(69mm wide x 66mm high)	£42.00
3 spaces	(quarter page - 69mm wide x 100mm high)	£60.00
4 spaces	(138mm wide x 66mm high)	£75.00
6 spaces	(half page - 138mm wide x 100mm high)	£104.00

Trade advertisement material should be supplied in print-ready format, to the chosen standard size and correct shape.

For trade advertising enquiries, please contact David James (Trade advert coordinator/Treasurer) at either thebridge832@gmail.com or 01373 832443.

# Darling Interiors

Made to measure Curtains & Blinds • Bedspreads • Tracks & Poles • Fitting • Competitive Pricing

*Chosen in the comfort of your own home*

Choosing new furnishings has never been simpler. We have an extensive range of exquisite fabrics from leading designers and suppliers to choose from. For the finishing touch, we can provide beautifully crafted tracks and poles from the Bradley range and other leading brands measured to fit different sizes of bay windows and straight windows.

**Call today to book your FREE No Obligation Consultation**



t: 01373 672 359 e: [info@darling-interiors.co.uk](mailto:info@darling-interiors.co.uk) w: [www.darling-interiors.co.uk](http://www.darling-interiors.co.uk)

**cloud**  
homecare

Quality care and  
support in Warminster  
and the surrounding  
villages



**We are a small, Corsley based care provider**

**We provide care to people who need support  
to remain living in their own home**

**Please telephone or email us, or visit our  
website for further details**

Tel. 01373 832 597 enquiries@cloudhomecare.co.uk  
[www.cloudhomecare.co.uk](http://www.cloudhomecare.co.uk)

# Chill out in your garden this summer...



Cool plants  
Pots galore!  
Vintage, quirky furniture  
Hanging baskets  
Statuary  
Water features  
and so much more...

01373 832591  
[www.acressupply.com](http://www.acressupply.com)  
[info@acressupply.com](mailto:info@acressupply.com)

*Your local, independent  
garden and aquatic centre  
Open 7 days a week*

Acres Supply  
Corsley  
BA12 7PP

## FG COLLIER

KITCHENS • BATHROOMS • INTERIORS

### WHOLE HOUSE DESIGN & SOLUTIONS



FG COLLIER LTD 29-35 EDWARD STREET WESTBURY WILTSHIRE BA13 3BL  
TEL 01373 822227 EMAIL [INFO@FGCOLLIER.COM](mailto:info@fgcollier.com) WEB [FGCOLLIER.COM](http://FGCOLLIER.COM)