

The Bridge

September 2015

*monthly magazine for the villages
of Corsley and Chapmanslade*



*join the Festival Choir, do the defibrillator demo, support Macmillan,
go to the kid's library launch, there's lots to do in September!*

Castle Care Wessex

Because your home is your castle



CARE IN YOUR OWN HOME

We are a mother and daughter team running a professional, friendly agency specialising in:

24 hour live-in care

Helping loved ones stay in their own home, maintaining their independence.

Domiciliary Care

For short periods of time, perfect for clients who enjoy their independence but appreciate a helping hand.

For more information telephone 01373 836767

email: castlecarewessex@btconnect.com

www.castlecarewessex.com



Frome Heating Specialists

M A Knight

01373 832578

Heating and plumbing engineers specialising in:

Solar heating

Oil and gas boiler servicing

Boiler replacement

Energy management

Pressurised hot water systems

Underfloor heating systems



199876



Family business established 1964

Stavanger, Corsley, Nr Warminster, Wiltshire, BA12 7QL

The Bridge

monthly magazine for the villages of Corsley and Chapmanslade

Articles

Please submit articles either by email to viv.thomas146@btinternet.com or by hand (legible handwriting please!) and take them to the drop-off locations at Barbers Plant Centre, Chapmanslade, or Acres Supply Garden Centre, Corsley by the deadline.

News, reports, updates, thank you's, etc, from individuals or local organisations are free – the more the merrier – keep 'em coming!

File types

Save your files as .doc – please don't send .docx files – I can't always open them successfully.

Advertising

Small ads are £1 for each item whether 'For Sale' or 'Wanted'.

Events/local organisation ads (churches, clubs, playgroups, etc) are £2 per month for a boxed advert.

Full page ads cost £7.50, are subject to space availability and cannot be guaranteed,

If you are advertising, don't forget to take the fee – cash or cheque in a sealed envelope please, to either of the drop-off points (Barbers Plant Centre or Acres Supply).

Please note: no cash, no advert!

Trade advertising

Please see information on the last page.

In this issue...

- 8 Bob's Bafflers**
a cunning quiz
- 10 Biology: changing the world**
Ebola crisis
- 20 Parish Council briefing**
Corsley
- Three Open Doors**
news from the pews **25**
- Corsley WI**
news from the ladies **30**
- Buzz from the Hive**
all about the busy little bees **31**
- 38 Parish Council briefing**
Chapmanslade
- 43 Whitbourne Chapel**
chapel colloquy
- 50 Countryside matters**
views from over the hedge

Deadline

**Deadline for articles
or adverts for the next
issue of The Bridge is
4pm 19th September**

**Please note that no
items will be accepted
after this date**

September

Tuesday 1st

Coffee Morning – 10am - 12 noon, Corsley Reading Room

Thursday 3rd

Warminster mobile library (see page 52 for times)

Saturday 5th

Corsley litter pick – 10 am, meet opposite the Royal Oak

Monday 7th

Corsley Parish Council - Quarterly Meeting – 7.30 pm, Corsley Reading Room

Corsley Festival Choir – 7.30pm, St Margaret's Church rehearsals resume

Tuesday 8th

Chapmanslade Parish Council – 7.30 pm, Chapmanslade School

Tuesday 8th

IT for Silver Surfers (IT) – 10 am - 12 noon, Corsley Reading Room

Thursday 10th

Corsley WI 95th Anniversary Dinner – 6.30 for 7 pm, Corsley Reading Room

Warminster Area Board – 7 pm, Chapmanslade Village Hall

Wednesday 16th

Parochial Church Council – 7.30 pm St Margaret's

IT for Silver Surfers (Digital Photography) – 10 am - 12 noon, Corsley Reading Room

Thursday 17th

Warminster mobile library (see page 52 for times)

Church and Community Coffee Morning – 10 am-12 noon, Three Horseshoes

Chapmanslade

Saturday 19th

Children's Library launch – 10 am onwards, St Margaret's Church, Corsley

Wednesday 23rd

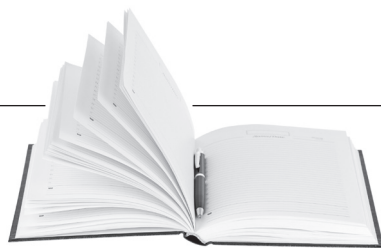
Soup and Lite Bites Lunch – 12.30 pm Corsley Reading Rooms

Friday 25th

Macmillan Coffee Morning – 10.30 am-12 noon, Corsley Reading Room

Saturday 26th

Defibrillator Awareness event – 9.30 am-12.30 pm. Demonstrations at 10, 11 and 12 noon, Chapmanslade Village Hall



Diary Dates

October

Thursday 1st

Warminster mobile library (see page 52 for times)

Saturday 3rd

Corsley litter pick – 10 am, meet opposite the Royal Oak

Corsley Harvest Supper – 7 for 7.30 pm, Corsley Reading Room

Tuesday 6th

Coffee Morning – 10 am - 12 noon, Corsley Reading Room

Thursday 8th

Corsley WI - 'The Journey of a Volunteer' – 2.30 pm, Corsley Reading Room

Chapmanslade Parish Council – 7.30 pm, Chapmanslade School

Saturday 10th

FREE Apple Pressing Day – from 11 am, Corsley Memorial Playing Field

Chapmanslade Harvest Supper – 7 for 7.30 pm, Chapmanslade School

Thursday 15th

Warminster mobile library (see page 52 for times)

Saturday 17th

Cool Jazz and Pop Classics – 7.30pm, Chapmanslade Village Hall

Thursday 29th

Warminster mobile library (see page 52 for times)

November

Tuesday 3rd

Coffee Morning – 10 am - 12 noon, Corsley Reading Room

Thursday 12th

Corsley WI - 'Gardens and Flowers' – 2.30 pm, Corsley Reading Room

Saturday 21st

Chapmanslade Quiz

Saturday 26th

Corsley Show Society Annual General Meeting – 7.30pm, Corsley Reading Room

Saturday 28th

Christmas Market – 10 am Corsley Reading Room

Harvest Suppers

Saturday 3rd October, 7 for 7.30pm

Corsley Reading Room

Saturday 10th October, 7 for 7.30pm

Chapmanslade Village Hall

Bring your own drinks (glasses provided)

£7 for adults and £3 for children

*Tickets and further details available from
Claire da Costa 832113 - Corsley Supper
Anne Good 832505 - Chapmanslade Supper
or PCC members*

*Come and join us as we celebrate harvest in the
traditional way with good food and good company.
We look forward to seeing you there!*



Corsley litter pickers

We meet opposite the Royal Oak at 10am on the first Saturday of each month. Our next 'pick' is on Saturday 5th September – do come along and help keep our village beautiful.

Cath Aylesbury and Sue Taylor

Paid-for green bin collections

Corsley and Chapmanslade

Wednesday 9th September

Wednesday 23rd September

*Please note that green bin collections are now a CHARGEABLE service. If you have not signed up to and paid for this service, your green bin will **not** be emptied.*



Pears Electricians

Nigel Charteris - BSc (Hons) M.I.E.T.



Professional Local Electrician

A HIGH STANDARD OF WORK AT REASONABLE RATES

Part P registered with www.napit.org.uk - Testimonials and references available

Faults & Troubleshooting • Repairs & Improvements
Installation Condition Reports • Boiler Wiring

www.pearselectrical.co.uk

01985 213314 or 07717 534026



OAKLEY

GARDEN MACHINERY

Grove Lane, Marston Trading Estate
 Frome, BA11 4AT



**For Sales, Spares,
 Workshop Service
 and Repairs**

Hayter
 Mountfield
 Lawn King
 Westwood
 Stihl
 Honda
 Toro
 Echo
 Husqvarna
 Shindalwa
 Oregon
 and more...

www.oakleyfrome.co.uk

01373 467712

Precious Paws Grooming Studio



Luxurious mobile grooming
 service for cats and dogs

Grooming, Bathing, Handstripping, Clipping
 and Microchipping *City & Guilds Qualified*

Contact Alison on

07887 721418 or 01985 510115

Bride by Design

Bridal Gowns & Accessories



2 Silver Street
 Warminster
 BA12 8PS

01985 217216

Please contact us to arrange an appointment
www.bridebydesign.biz

STUNNING COASTAL VIEWS ON CORNISH COAST NEAR LOOE

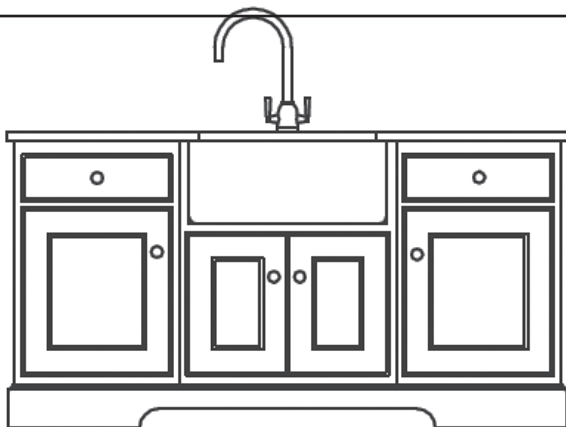


Six bedrooms (sleeps 12)
 Private access onto beach
 Pets allowed

Top class facilities including wi-fi
 Rent for week or even long weekend
 Downstairs bedroom and shower room

For more info: Sandy Parrish 01373 832522

McCulloch
FURNITURE



Kitchens • Bedrooms • Bathrooms • Libraries
Studies • Media furniture • Offices • Freestanding

The Workshop, Bruton Lane, Upton Noble, Somerset, BA4 6AH
Telephone 01749 850000 Fax 01749 850055 Mobile 07887 892633
enquiries@McCullochfurniture.co.uk
www.McCullochfurniture.co.uk

ORCHARD UPHOLSTERY

RE-UPHOLSTERY OF
ANTIQUE AND MODERN
FURNITURE

❖ FREE ESTIMATES ❖

COLLECTION AND
DELIVERY SERVICE

Telephone Lesley
01373 464870

Sharon's Foot Clinic

SAC Dip FHPT SAC Dip FHPP



Fully insured and highly trained

For the professional treatment of:
Corns • Callus • Cracked Heels
Athletes Foot • Fungal Infections
Thickened Nails • In-growing Nails
Diabetic Foot Care • Verrucas
Nail Cutting • Nail Reconstruction

Contact Sharon on
01373 836734 or 07728 200402

Clinic appointments at
12 Sunny Hill, Nunney, BA11 4ND

Home visits also available

‘Thank you’

To friends and neighbours in Chapmanslade and Corsley

I would like to take this opportunity to thank the many friends, neighbours and members of the church community in Chapmanslade and Corsley who have provided love, support and invaluable practical help over the past few weeks.

As many of you will know, I tragically lost my wonderful husband, Philip Butler and my amazing daughter, Jenny, only 28 years old, in the devastating road traffic collision on the A36 on 13th July.

I have been overwhelmed by the cards, messages, texts, phone calls, visits and flowers that I have received and I am more grateful than words can express. I was so thankful for the help and support of the churchwardens who supervised parking and traffic flow in Chapmanslade for the two funerals on the 4th and 5th August, which allowed my family to walk from The Knoll to the church behind Phil and Jenny. This was especially important for Jenny who was carried in a horse-drawn hearse for the whole journey to Westbury Cemetery.

Thank you to neighbours who paid their respects as we passed through the village; it was very moving.

Thank you to the church flower arrangers and everyone who helped to make St Philip and St James' look marvellous and to the staff of The Three Horseshoes, who looked after the many relatives, friends and colleagues of Jenny's and Phil's following the services.

Finally, special thanks to the Reverend Pauline Reid for the love and support she has given to me and my family and for leading the very special funeral services for these two exceptional people.

Thank you all.

*Dr Sue Jones
The Knoll
Chapmanslade*

Bob's bafflers

- 1 If Boxing Day is a Friday, what day is December 1st?
- 2 Becky Sharp is a character in which novel?
- 3 How many strings does a balalaika have?
- 4 Which school did Billy Bunter attend?
- 5 Parker and Barrow were the surnames of which notorious couple?
- 6 Freetown is the capital of which country?
- 7 What is the last word in the New Testament?
- 8 Which girl's name is used to describe a female ferret?
- 9 Who composed the song "Moon River"?
- 10 Where on the face would you find your columella?
- 11 In alphabetical order, which is the last chemical element?
- 12 Which word can go after 'heat' but before 'on' to make two new words?

Answers on page 52



FISHING – RIVER WYLIE

A rare opportunity has arisen for Rods on 2½ miles of catch and release wild trout fishing on the River Wylie.

For more information, please contact Alice Baker on 01985 845535 or email alice.baker@longleat.co.uk

Caroline's Cakes

- Do you need a cake?
- Don't enjoy, or have the time, to make one?

Then think...

...Caroline's Cakes!

Caroline's Cakes is a bespoke, homemade cake service, delivering right to your door.

Choose from a delicious selection of cakes, muffin and brownies – from the conventional to the more unusual (also catering for any dietary requirements)

t. 07812 647521 e. caro.ds1@gmail.com
f. [facebook.com/carolinescake](https://www.facebook.com/carolinescake)

UPVC REPAIRS WILTSHIRE.CO.UK

FOR PROFESSIONAL WINDOW & DOOR REPAIRS

Are you having a problem with your UPVC windows or doors?

- ✓ Misted glass
- ✓ Broken or faulty window hinges
- ✓ Faulty locks
- ✓ Jammed windows or doors
- ✓ UPVC door adjustments
- ✓ Window and door handles

Call us – we are here to help

All work guaranteed

01373 430010 07795 143228 www.upvcrepairswiltshire.co.uk

the three horseshoes

The pub Chapmanslade deserves

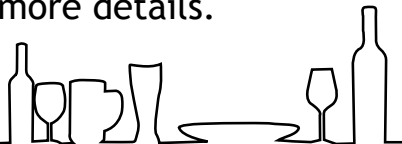
Open daily from 10am-11pm serving delicious home cooked food (12-3pm & 6-10pm Mon - Sat. All day Sun.) Enjoy a refreshing drink in our beer garden with spectacular views of Longleat and Cley Hill or indulge with one of our regular meals deals by the warm, open fire on a bitter winter's day. We organise monthly events featuring live music, comedy and much more!

Call us on 01373 832 211

Follow us on Facebook for more details.



threehorseshoeschapmanslade



Clare Merritt

Quality re-upholstery and loose covers

Curtain make up

Roman blinds made to measure

Fabrics, curtain poles, etc

01373 464993

Established 1973

Piano Tuition

All standards welcome

Debbie Rickhuss LLCM BEd

Teacher Pianoforte and Theory

reasonable rates ~ 01373 832829

Biology: changing the world

What is Ebola and is it so dangerous?

Professor Nigel Brown, President of the Society for General Microbiology writes about this once-deadly virus

Ebola, or more properly Ebola Virus Disease, is caused by a virus which is readily transmitted from individual to individual in body fluids, such as saliva, blood, vomit and urine. It is an example of a zoonotic disease, which is one passed from animals to humans. Then, in turn, it passed from human to human with devastating consequences. The recent outbreak in West Africa was traced back to one young boy in Guinea who may have been in contact with contaminated fruit bats. His immediate family and those attending to their care and funerals were the next to succumb and cultural practices, such as washing the bodies of the deceased, may have spread the disease further. It is estimated that between the start of 2014 and the end of July 2015 there were nearly 28,000 cases and over 11,000 deaths.

Ebola is accompanied by bleeding from soft tissues, and so is known as a haemorrhagic disease. Other haemorrhagic viruses are known, but Ebola is particularly important as it occurs where healthcare and sanitation systems are often rudimentary. Ebola is highly infectious, but can be managed by avoiding direct contact with the victims. Information and monitoring of the outbreak was key to managing it. Those countries with

good healthcare systems, such as Nigeria, became free of Ebola infections much more quickly than others, such as Liberia.

Even though the crisis in West Africa is not yet over, Ebola is unlikely to come to the UK. Good hygiene measures help prevent initial transmission between individuals and we are conscious of the need to monitor people who have been in disease areas. The virus is not transmitted through the air, only by direct contact. At the end of July the initial results of a vaccine trial were announced, and the vaccine appears to have an excellent success rate. If future cases arise, their immediate contacts can be vaccinated to prevent further spread of the disease. Remarkably, this vaccine was produced in about 12 months as many of the requirements for testing were short-circuited due to the urgency of the situation. I must congratulate the many scientists responsible for developing this vaccine by GM technology from a harmless virus and a fragment of Ebola virus. I also compliment the UK and other microbiologists and medical staff who went out to Africa to help manage the crisis.

So, is Ebola the worst health problem facing Africa? The simple answer is "No!".

Although shocking, the number of deaths from Ebola is small compared with the number of estimated deaths in the same period from tuberculosis at 50,000, malaria at 700,000 and HIV/AIDS at about 1.3 million, with hunger also accounting for over 400,000 deaths. There is still a lot to do.

Nigel Brown

Nigel Brown is a retired Professor of Microbiology, now living in Chapmanslade. If there is a biological topic that you would like him to write about, or if you have questions about this article, please contact him at nigelbrown48@gmail.com.

Sponsored by the Royal Society of Biology

www.rsb.org.uk

Thank you Sue!

St Margaret's Church was filled to capacity for the Service of Thanksgiving for Sue Waterman's life, and no wonder, as Sue was held in such high esteem by everyone who knew her.

As a friend, from our arrival in Chapmanslade over 40 years ago, I would like to remind villagers of the many contributions Sue made to the village she loved.

Sue performed in many pantomimes, often taking leading roles. This in turn led to her support for the Village Hall, where she was secretary for many years – helping at events, painting the hall, making curtains and planning its modernisation.

Sue also supported the church – joining the cleaning and flower rotas for very many years in her quiet, efficient way, as well as helping at events such as harvest suppers and fêtes.

The Bridge also benefitted from Sue's expertise when she was Editor for many years, helping to link the two villages of Chapmanslade and Corsley together; I know Sue was admired by people in both villages.

She then went on to deliver The Bridge to households for many years.

I know Sue would be embarrassed by this lengthy list, but mention must also be made of the school, which her three children attended, the WI (later the Loose women), helping at Macmillan Coffee mornings, Speed Watch, Open Gardens, the History Group and many other quiet contributions, such as picking up litter in the countryside when walking her dog!

Sue will be greatly missed, not just by her wonderful family, but all the people who were lucky enough to know her, and the people who did not know her, but benefitted from her contribution to the life of our village. Sue's interests extended beyond the village but here, in The Bridge, I wanted to thank Sue for the time she dedicated to Chapmanslade.

Sue's chosen charities Positive Action on Cancer, Water Aid and The Woodland Trust reflected her care for the world.

A sad friend, Denise Page



**Shake off those pounds and
dance yourself fit.**

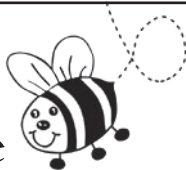
Chapmanslade Village Hall
Monday 7.30pm - 8.30pm

Longbridge Deverill Village Hall
Thursday 7pm - 8pm

For all levels of fitness and
NO experience needed.

For more information please contact
Amy 07830 119032

Busy Bees Pre-School Chapmanslade



For children aged 2-5 years
Monday, Wednesday, Thursday and Friday
8am - 5pm; Tuesday 8am - 3.30pm

Please contact Kelly Williams to arrange a
visit and a free trial session for your child
Breakfast club and after-school club available.

Term time only

Telephone 07749 257608

busybeespre-school@hotmail.co.uk

FENCING



Garden Fence Company
Garden fencing supplied and erected

- Repairs to existing fences
- Old fencing removed from site
- Hedges cut
- Small trees felled

*For a friendly, cost effective and reliable
service contact Gerald Gasgoigne on:*

07506 373335, 01373 832613

info@wessexgardenfencing.co.uk

www.wessexgardenfencing.co.uk

For your
Heating Oil Supplies
contact

KINCH FUELS

at their
local depot in
Devizes, Wiltshire

Telephone 01380 727102

*The company you and
your home will warm to*



LUXURY PRIVATE CAR HIRE

A locally based, door-to-door, personal
service for up to six passengers in
air conditioned comfort

AIRPORTS • SEAPORTS • ANYWHERE

For bookings, please call
01985 840088 07903 307734

WEST COUNTRY SWEEP

Domestic & Commercial Chimney Services

Andrew Leigh

07545 822109

westcountrysweep@gmail.com





The Community Foundation
for Wiltshire & Swindon

Health & Wellbeing project sponsored by
The Community Foundation for Wiltshire
& Swindon

**Corsley Memorial
Playing Field**



Apple Pressing Day

Memorial Playing Field

10 October 2015

From 11.00am

Free!

FUN FOR ALL THE FAMILY!
**JUST TURN UP WITH A BUCKET OF
APPLES AND BOTTLES FOR JUICE!**

MARION 01373 832 314

MARION@NMC2.CO.UK





Downlands

TREE SURGERY

For Expert Tree Care

Telephone Jon Burgess on

01985 214320

Skilled pruning

Tree felling

Stump removal

Qualified and insured

**Free tree health
survey and quotes**

Keep active with physiotherapy

Alison Rossiter MCSP HPC

Chartered Physiotherapist

30 years experience in physiotherapy specialising in the treatment of muscle and joint problems. Helping people to improve their health and fitness through treatment, exercise and advice.

Home visits can be arranged.

Daytime and evening appointments available.

If you need help please contact:

Beckington Physiotherapy 01373 831483

Email: arossiterphysio@gmail.com

www.beckingtonphysio.co.uk

DAVID EDMUNDS & CO
ACCOUNTANTS & TAX CONSULTANTS

Specialists in the self-employed, small and medium business and self assessment. Preparation of accounts, VAT, PAYE, income tax and corporation tax returns.

*Personal, friendly service
Evening appointments by arrangement*

Telephone 01225 334447

Home 01373 832430

Thornbury
-Sports Ltd-

**Specialist installers of Macadam
Sports Surfaces with laser technology**

- Tennis courts
- Playgrounds
- Multi-use games areas
- Football, hockey & cricket pitches
- Synthetic grass

7 Whitworth Road
Marston Trading Estate
Frome, BA11 4BY

t. 0845 2416115
m. 07767 401270

colinb@thornburysports.co.uk
www.thornburysports.co.uk

Kevin O'Mahony
Quality Painter and Decorator

Internal and external painting

Artexing

Wallpapering

Coving

Hand painted kitchen units

07724 349447 or 01985 301197

email kevo7743@googlemail.com

www.thewarminsterpainter.co.uk

IT for Silver Surfers *Autumn sessions*

The monthly sessions will recommence on
9th September (IT)
16th September (Digital photography)
10 am -12 noon, Corsley Reading Room

All welcome

Just bring your laptop or tablet and
attach by Wifi

*Beginner classes will also run if
there is demand*

For more details and to register please
go to hdwebsites.wix.com/crr-it or if you
have a question phone me

Hugh Deed, 01373 832897

Ringing News

My goodness, since I last wrote we've all
been in demand,

To ring for weddings, services, at
everyone's command.

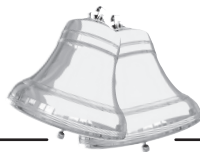
We're honoured to have rung our bells
in Sue's memoriam

And celebrate the wedding day of
Shelley and Graham.

We've gone across the county to help in
other towers,

It is a joy to ply our skills we've learnt in
practice hours.

Marion Moldon



Corsley Tennis Club News

The Ladies' 'B' Team played Chippenham Park 'C' on a pleasant evening at the Corsley Memorial Playing Field and sadly lost by six sets to two. Emma Fox and Rebecca Bennett competed strongly, while Diana Hale and Sue Newell showed great resolution. On the this occasion, the opposition proved to be rather too well-organised.

The club held its mixed doubles tournament on a warm, but blustery Sunday afternoon at the Playing Field. After some absorbing sets, Alison Plummer and Jon Dilena finished top of Group A –

Alison's solid ball-striking complemented Jon's watchfulness very effectively. Group B required a play-off in which Ann Walker and Brian Young prevailed against Emma Fox and Michael Clarke.

The final was closely contested but Ann and Brian emerged as worthy victors, with Ann's consistency and Brian's volleying proving to be the decisive factors. The event was organised by Sonia Glenn with her usual style and panache.

Cake Monster



Do you remember the launch of the

Lions of Longleat

Dr Andrew Flack wants your help in researching the rise of the English Safari Park

Opening in April 1966, the 'Lions of Longleat' was the world's first drive-through lion reserve outside Africa.

Established by circus showman Jimmy Chipperfield and the Marquis of Bath, the Wiltshire attraction invited visitors to enter the park's wild spaces and to gaze upon the beasts inside from the comfort and security of their very own automobiles. Fifty animals were initially acquired from animal dealers in Uganda and from zoos throughout the UK and Europe to make up the park's first group of African lions. Presented as 'even better than Africa', the park was immediately popular with the public.

In the twelve months following the park's opening in 1966, 188,500 visitors' cars entered the estate along with 580 motor coaches. Indeed, massive visitor numbers produced long and winding traffic jams that clogged up nearby villages as visitors flocked for a close encounter with the African wilds.

While plenty of people were excited by the thought of Wiltshire's latest animal attraction, many people were concerned about beastly invasions. Some people were worried about the prospect of lions getting out, while others were perturbed by the sudden appearance of hundreds of

motorcars every day, bringing thousands of tourists into a part of England's 'green and pleasant land' that had formerly been quiet and peaceful.

I am an historian at the University of Bristol and I am currently working on the rise of the English Safari Park. What I've found is fascinating, but what I really want is memories from members of the public who

remember the first years of Longleat. Indeed, good history is all about the memories of people who were actually there. Did you go when the park first opened? What was it like to ride through the lion enclosure in your car?

Were you afraid of the thought of lions loose in the Wiltshire wilds, and was your rural life disrupted by the arrival of so many tourists?

If you can answer any of these questions, I would love to hear from you. Please contact me at Andrew.flack@bristol.ac.uk. And, if you have any old photographs that you would like to share with me, either email me, or send them to me at the following address:

Dr Andrew J Flack
Department of Historical Studies
13-15 Woodland Road
University of Bristol, Clifton
Bristol, BS8 1TB



GM3 MUSIC & SNG LIVE IN ASSOCIATION WITH

WESTBURY
Music & Arts
FESTIVAL

Presents

RED DWARF/CORRIE/ACTOR/POET/MUSICIAN **BBC6 MUSIC FUNK & SOUL DJ**

CRAIG CHARLES

PLUS SPECIAL GUESTS
PARA & BAILA
TOBY SPIN
G DJ
PLUS MORE TBA

VISUALS BY VJ ULTRA

TICKETS
01373 825700
WWW.SEETICKETS.COM

FRIDAY 25 SEPTEMBER

CLUB ICE, WESTBURY, QUARTER MASTER ROAD - WEST WILTS TRADING ESTATE

£12.00 EARLY BIRD / £14.50 ADVANCE / £17.00 DOOR / 01373 825700 WWW.SEETICKETS.COM

THE CRAIG CHARLES
FUNK & SOUL CLUB

DOORS 21:00 - 4:00

WWW.WMAFESTIVAL.CO.UK

ALLSOP CARPETS & FLOORING

DOMESTIC ♦ COMMERCIAL ♦ INDUSTRIAL

Christchurch Street West, Frome BA11 1EB

TEL: 01373 463866 MOBILE: 07887 953014

www.allsopcarpets.co.uk

Chapmanslade Village Hall

Can be hired for all your functions:
parties, weddings, meetings, classes, etc

For hiring information, phone

Ken Davies 01373 832034 or email
chapmansladehall@blueyonder.co.uk



TOENAIL CUTTING

IN YOUR OWN HOME

ALICE LEWIS

01373 228010

KEYVOLUTION

Locksmith and
Carpentry Services
serving the Wiltshire Area

Warminster based company offering locksmith and carpentry.
Police cleared, reliable and honest service.

Any other quote beaten.

- BS3621 lock upgrades for house insurance approval
- Garage doors, locks and running gear
- Lock repairs – specialising in Chubb mortice locks
- Upvc double-glazed door and window locks fitted – even old ones!
- Door or window locks opened destructively or non-destructively (indemnity required for these services)
- Digital code locks supplied and fitted
- All types of carpentry work – mostly 2nd fix and maintenance

Check out my website

www.keyvolution.co.uk



or call Ben on 07748 214799 or 01985 219799



Enjoy a Beautiful Lawn this summer...

You can have a beautiful,
lush and weed free lawn.

Lawn Envy can revive your lawn
this summer with their tailor-made
treatment programme. Make your
lawn the envy of your neighbours.

For your FREE lawn assessment call

01985 221107 or visit

www.lawnenvy.net

Lawn Envy
Where the grass is always greener

Call 01985 221 107
or visit www.lawnenvy.net

White Horse Windows

Windows, Doors, Conservatories and
more...

Local Company, Exceptional Standards
10 year guarantee

Windows Fascia & Guttering

Doors Conservatories

CERTASS Registered

For a Free Quotation call Ryan on

07909 441442 or 01373 302594

SomerSet

SURFACING

Division of
Thornbury Sports

For Roads, Footpaths, Driveways, Car Parks

- Macadam surfacing
- Block paving
- Resin bonded surfacing
- Coloured Macadams

7 Whitworth Road
Marston Trading Estate
Frome, BA11 4BY

t. 0845 2416115
m. 07767 401270

colinb@thornburysports.co.uk
www.thornburysports.co.uk

BARTERS PLANT CENTRE

'Passionate about Plants'

Shrubs ♦ Perennials ♦ Trees ♦ Roses ♦ Conifers
Climbers ♦ Fruit Trees ♦ Hedging ♦ Soft Fruit ♦ Seeds
Bulbs ♦ Basket Plants ♦ Bedding ♦ Vegetable Plants
Christmas Trees ♦ Holly Wreaths
National Garden Gift Tokens



Opening Hours

Mon to Sat	9 - 5	(March to October)
Mon to Sat	9 - 4.30	(November to February)
Sun	10 - 4	(March to June + December)

Just off A36 in Chapmanslade, Wilts, BA13 4AL
01373 832694 www.barters.co.uk



JONATHAN CORP

Painter and Decorator
General House Maintenance
Sturford Mead Farm, Corsley
Warminster, Wiltshire, BA12 7QU
01373 832213

Postlebury News R Gould – Newsagent

All papers and magazines
Home delivery service

01749 850556 07979 452677

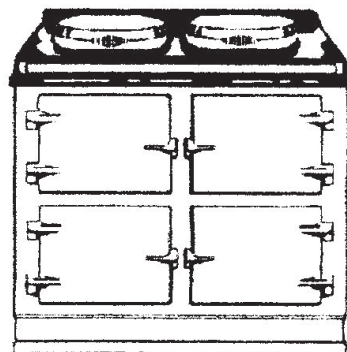


T A P Services

Telephone/Fax 01373 463106

www.tapservices.co.uk

Authorised Stanley Service Agent



Range Cooker Servicing

Corsley Parish Council

Parish Council Briefing

Chairman, Neil Britten, round up the PC's July activities

There has been one occasional meeting in July, to consider four planning applications.

Planning Applications

15/06060/FUL

This was a repeat full application by a family building firm, McIntosh DBR, of Knowle Farm, Compton Martin, for erection of two detached dwellings and associated garaging at Squires Coal Yard, Lane End. Conditional upon success with this application, McIntosh will purchase the site. The new application was necessary because of errors in the original survey which resulted in a need for minor changes in the dimensions and spacing of the proposed houses. In addition, the original plans for on-site soakaways for the private sewage treatment plants had been rejected by the Environment Agency.

A copy of a comprehensive letter of objection to the proposals, to Wiltshire Council, had been received from No. 2 Roddenbury View, mainly concerned with the potential overlook into their property and the overbearing height of the proposed houses.

The PC supported the original planning application subject to a number of conditions. After further discussion on the new application the Council agreed to support the application subject to the following conditions/concerns:

- That the condition of the boundary wall separating the development site from

its neighbours at Roddenbury View be professionally examined.

- The developer should erect appropriate fencing atop the boundary wall to ensure privacy is maintained. (It was noted that at the PC meeting where the outline application was first discussed, at which representatives of the developer and residents of Roddenbury View were present, the latter were informally advised by the developer that such fencing would be erected. This agreement was not included in Wiltshire's decision conditions).
- It was noted that despite the redesign, the ridge height of one of the proposed dwellings is greater than the ridge height of the neighbouring bungalows, in contravention of the conditions applied at the outline planning stage.

The PC felt strongly that the proposals in the application relating to drainage and the disposal of foul water were too vague and there was concern that the capacity of the existing drains crossing the A362 was probably inadequate. There was also concern over the potential effect of outflow from a new soakaway on the north side of the A362. A further condition was thus added that, when further information is provided and firm proposals are put forward to Wiltshire, the PC should have the opportunity to comment again.

15/06161/FUL

Erection by Longleat Estates of six temporary accommodation blocks and associated services at Stalls Farm. These application was for facilities for support the cultural and artistic events in the 2015 season. A similar set of accommodation was provided for the events over the Christmas period 2014/15.

The PC had no objections to this application.

15/06343/FUL

Single storey extension at Deerwell, Whitbourne Springs to replace existing lean to and kitchen.

The PC had no objections to this application.

15/06548/FUL

Erection of a wooden verandah, installation of play equipment and pizza oven on the Memorial Playing Field. The latter two items had been transferred from the Old School Playing Field.

The PC had no objections to this application

Broadband

At the last PC meeting, there was agreement that there could be a case for a full scale survey in Corsley to establish broadband needs and whether there was a case to be made for early installation of a 'superfast' capability. The village was invited to let the PC know if individuals were dissatisfied with their broadband service (speed) and believed that there was a need to argue for a better service to be delivered to Corsley in the next two years. We were particularly looking for any experts who might be willing to help advise and run a campaign if there was sufficient support.

The response over the last six weeks or so has been very muted, with about eight

expressions of dissatisfaction. The PC will once again be debating this topic at the next PC meeting on 7th September, with a view to deciding whether a full scale survey is warranted. Once again we are interested in your views and the more responses we receive, the more likely it is that the PC will be able to promote the cause. Please let us know your views by sending an email to myself or John Willcox.

(corsleypc_jdw@aol.co.uk)

Social Housing Proposed Bay Tree Development

An update was received on 5th August from Wiltshire and reads:

"The whole accommodation programme is going back to cabinet mid-September for approval to progress to the next stage. I therefore feel that it would be appropriate for me to attend the December meeting, although having said that I will be on maternity leave at that point, so it would be another officer, yet to be appointed.

Re an update for the parish newsletter, you can share that Wiltshire Council has recently appointed an architect and quantity surveyor for the Corsley site, I am meeting with them in a few weeks, to have an initial meeting about the proposal, site constraints, what the bungalows programme is about, etc... I hope to meet with you before the December meeting, as there will be some progress before that time.

I am awaiting a new plan from our estates team and I will forward this on asap.

Re housing allocations

People/households will need to be registered and assessed with our Homes4Wiltshire Team. Their telephone number is 0300 4560104 if you would like to talk to someone. To join the register the applicant must have a local connection to Wiltshire

and if they want to bid on a property they must have a local connection to where the property is based, e.g. if they want to bid on a new bungalow in Corsley, they must have a local connection to Corsley and be 55+. More information can be found here www.homes4wiltshire.co.uk/Data/ASPPages/1/2.aspx. The overall aim of the bungalow programme is to encourage households who are currently under-occupying family housing to downsize into more suitable accommodation e.g. a bungalow, that would better suit their needs now or in the future. By freeing up the existing property, this will be let to another local Corsley household registered on Homes4Wiltshire or enable families who live elsewhere to relocate back to Corsley."

Streetscene

There had been some progress on the flooding at Court lane. The landowner has agreed to put a bund at the field entrance to stop the field run-off and the local authority are investigating how best to ensure the water runs down to the existing drains.

It was reported that there had been an accident at the junction of Fuzzy Lane and Dertford as a result of which the road markings were going to be replaced.

Footpaths

It has been noted that there has been a reported increase in the dumping of green waste on footpaths and the PC is keen to understand whether there is a link with the recent changes to green waste collection. One report had been directly followed up by the PC, but it should be noted that footpaths are public highways and, as such, it is the responsibility of landowners to keep adjacent hedges cut and the paths clear.

This topic will be on next month's quarterly meeting.

Old School Playing Field (OSPF)

For those who have noticed that the gap in the fence between the car park and the OSPF has been closed, the explanation is that the PC was concerned that the gap was an invitation to travellers to get on to the land with vehicles or animals. This step is temporary and a more permanent solution will be debated at the next quarterly meeting. This discussion will also look at the longer term future of the OSPF, in particular the costs and benefits of the site.

Pedestrian access to the OSPF can still be gained through the double gates adjacent to Little Cuckoos.

Millenium stones

The poor material state of these stones has been noted and John White has agreed to arrange their cleaning.

Dates of future meetings

Quarterly Meeting

Monday 7th September, 7.30pm

Quarterly Meeting

Monday 7th December, 7.30pm

Meetings are held in the Lower Room, Corsley Reading Room.

Occasional meetings, at short notice, will also be held to discuss planning applications and other urgent business. Please watch the village notice-boards and the Bridge web site for these.

Neil Britten
Chairman, Corsley Parish Council
neil.britten@btinternet.com

www.corsleyandthebridge.co.uk



Clean-it

Recommended by



Carpet and upholstery cleaning specialist

01373 462059 or 07779 247961

Home ~ Private ~ Lettings

Garston
Veterinary Group



Are fleas and ticks
becoming a problem for
your pets?

Present this advert to receive
a tick remover with all
FREE nurse flea clinics
during July & August



BOOK NOW



Surgeries at:
Frome 01373 452225
Trowbridge 01225 754021
Warminster 01985 213350
Farm & Equine Unit 01373 451115
www.garstonvets.co.uk



Domestic Appliance Spares and Repair Service

Domesticare

Mike, David and Sue Wye
21 Keyford, Frome

01373 467351

Professional Childcare

Qualified, approved and registered.

A tailor-made, personal service.

Local and surrounding areas.

Call 07883 025476

denise.m.rawlings@mypostoffice.co.uk

JERRY RAYNER ●
boiler maintenance ●

01985 841461 or 07775 755981

FOR SERVICING AND BREAKDOWN
OF OIL BOILERS
also AGA and RAYBURN

- Competitive rates
- Friendly, helpful and efficient
- Call now for a quote



**STONE &
BRICKWORK
SPECIALISTS**

Tel: 07970 513233

Email: terry@rocketmasonry.co.uk

www.rocketmasonry.co.uk



LONGLEAT

Longleat Forestry

For all your timber needs, including:

- Firewood logs • Woodchip
- Mulch • Rustic poles • Coal
- Kindling • Saw logs • Hardwood
- Softwood • Christmas trees

Tel: **01985 213507**

Email: forestry@longleat.co.uk

Web: longleat.co.uk/about/forestry

Picket Post, Warminster, BA12 7JS

PAINT AND PASTE

Quality with reliability always

Martin Bendle
Painter and Decorator



For FREE estimates
07741 492617

email martin.paintandpaste@gmail.com
www.paintandpaste.co.uk

Cross Keys

Lyes Green, Corsley

*Home-cooked food
12 - 2.30pm and 6 - 9pm*

*Open all day on Sundays
food served 12 - 8pm*

Function room and large beer garden



01373 832406

www.facebook.com/CrossKeysInnCorsley

Corsley Tennis Club



New members welcome –
all ages, all abilities

Three hard courts available all year

Weekly junior coaching available

Low subscriptions

Contact either

Isabel Lewis 01373 832770 or

Rebecca Bennett 07974 796468

www.corsley-tennis.uk



Little Cuckoo's Pre-School

Lyes Green, Corsley
(next to the Corsley Centre)

For children aged 2-5 years

Monday, Wednesday, Thursday and
Friday - 9am - 3pm

Now accepting 2 year-old funding in
accordance with Wiltshire Council guidelines

Mother and Baby Group

Tuesday mornings from 10am to 11.30am

Contact Hayley McMahon 01373 832298

www.littlecuckoos@hotmail.co.uk



CHRIS SEVIOUR
Building Services

07894 708949

cmseviour@gmail.com

Roofing, Loft conversions,
Extensions, Plastering,
Natural stonework



S B Services



Contact Sean

07828 671566

*For your garden maintenance
and home improvements*

Three Open Doors

Dear Friends,

September again! And lots of new starts and comings and goings in a number of households I would imagine. Memories spring to mind of getting four children up and dressed and into their pristine school uniforms for the very first day of the new school year, and I seem to remember the uniforms didn't stay pristine for long! I also remember that I had to get up at the unearthly hour of 5.30am to actually get them out of the house by 8.30am. Busy mums and dads – my thoughts and prayers are with you!

It's quite something though isn't it, the day your beloved child starts school, or leaves home to go to university for that matter; you want to protect them and be there for them to make sure everything is ok, you want to make sure that nothing horrid happens to them, and of course you can't. Learning to cope when life gets difficult is a necessary skill we all have to learn at some point or another, other people can be there to support and encourage us but they can't do it for us.

Part of the Church's role is to provide support and prayer in times of need or distress. When a person is ordained as a minister in the Church they promise to pray daily for the people and community in their charge, and for the wider world. Sometimes that praying is done by the community of faith as a whole in the Sunday services or at Morning Prayer. If I hear that any of you are ill or in need in any way I make a point of praying for you. Sometimes I get a telephone call asking me to pray for a sick relative or friend. The point is you don't have to come to church to be prayed for, you don't have to good to be prayed for, you don't have to have your religious beliefs or indeed your lack of religious beliefs neatly parcelled up in an understandable package to be prayed for; anyone can ask for prayer, that's what we are here for

So if, like that new pair of school trousers in a few weeks – decidedly worn with perhaps a few holes in the knees – you or someone you know is in need of prayer, please get in touch. You needn't share any details if you don't want to; God knows our deepest need, our disappointments and our dreams.

In the meantime, I continue to pray for you all.

Love and prayers,
Pauline

September Church Diary

Tuesday 1st September

After Alpha Home Group

7.30pm at Honeysuckle Cottage, Corsley



Sunday 6th September: Fourteenth Sunday after Trinity

8am at St Michael the Archangel, Brixton Deverill: 1662 BCP Holy Communion

9.30am at St Margaret's, Corsley: Eucharist

11.15am at St Peter & St Paul, Longbridge Deverill: Eucharist



Monday 7th September

Time to Think Home Group

10.30am – please contact Phil 832845 for details



Sunday 13th September: Fifteenth Sunday after Trinity

9.30am St Philip & St James', Chapmanslade: Family Eucharist

10.30am at St Michael the Archangel, Brixton Deverill: Eucharist

11am at St Mary's, Temple: Matins



Tuesday 15th September

After Alpha Home Group

7.30pm – please contact Richard 832594 for details



Wednesday 16th September

Parochial Church Council

7.30pm at St Margaret's, Corsley



Thursday 17th September

Church and Community Coffee Morning

10am to 12pm at the Three Horseshoes, Chapmanslade:



Saturday 19th September

Launch of Children's Book Library

10am to 12pm at St Margaret's, Corsley

Sunday 20th September: Sixteenth Sunday after Trinity

9am at St Mary's, Temple: 1662 BCP Holy Communion

10.30am at St Margaret's, Corsley: Family Worship

10.30am at St Mary the Virgin, Longbridge Deverill: Eucharist



Monday 21st September

Time to Think Home Group

10.30am – please contact Phil 832845 for details



Wednesday 23rd September

Light Bites Bread & Soup Lunch

12.30pm to 1.30pm at Corsley Reading Rooms



Sunday after Trinity

9.30am at St Philip & St James', Chapmanslade: Eucharist

10.30am at St Mary the Virgin, Kingston Deverill: Eucharist



Tuesday 29th September

After Alpha Home Group

7.30pm – please contact Richard 832594 for details



Sunday 4th September: Eighteenth Sunday after Trinity

8am at St Michael the Archangel, Brixton Deverill: 1662 BCP Holy Communion

9.30am at St Margaret's, Corsley: Eucharist

11.15am at St Peter & St Paul, Longbridge Deverill: Morning Worship

Children's Library

We are very pleased to announce that we will be launching our children's library at St Margaret's Church on Saturday 19th September from 10am onwards. The intention is that children come along and borrow and exchange books.

To help us build up the initial stock if you have any books in good condition suitable for children up to teen years we would be very grateful to receive them. Collection points will be all three churches when open for services, the Benefice office on Monday mornings, or contact the office by e-mail and we will make suitable arrangements to collect.

Rural Dean	Rev Pauline Reid revpauline@btinternet.com	01985 841290	
Associate Priest	Rev Di Britten	01373 832515	
Lay Pastoral Assistants	Richard Dean	01373 832594	
	Barbara Hughes	01373 832273	
	Claire Tanner	01985 218099	
Pastoral Visitor	Alan Hopkinson	01373 832393	
Churchwardens	John Helliar	01373 832803	
	Charles Thackway	01373 832048	
Deputy Churchwardens	St Margaret's	Judith Helliar	01373 832803
	St Mary's	Harcourt Gough	01373 832039
	St Philip & St James'	Janet Aylesbury	01373 832752
Benefice Administrator	Marion Muston cleyhillchurches@gmail.com	01373 839026	

Fundraising Matters

This year there will be two Harvest Suppers. On Saturday 3rd October the Supper will be at the Reading Rooms, Corsley at 7.30pm; and on Saturday 10th October the Supper will be at Chapmanslade School. Please see full details for tickets in next month's Bridge.

Our Christmas Fayre this year will be at Godswell Grove Farm, Chapmanslade on Saturday 12th December. We will have all the usual attractions plus hold the draw for the 50/50 Club.

Welcome and Congratulations

Welcome to the church family Ava Thomas baptised at St Philip & St James on August 9th. Congratulations to James Ashton and Sara McCormack on their marriage at St Margaret's on August 22nd.

Prayers and Sympathy

Our prayers and special thoughts are with the families of Michael Cole, Wayne Harridge, Philip Butler, Jenny Jones, Sue Waterman and Hughie Little whose funerals have been held in our churches in recent weeks.

Copy for 3 Open Doors should be sent to Keith Muston at
themustons@btinternet.com subject 3ODs or phone 01373 832755.

If you would like to receive weekly news of Church events and activities, please send your email address to the above, with subject 'Through the Open Doors' or download a pdf from the 'churches' pages at www.corsleyandthebridge.co.uk



*Individually tailored holidays
for the very best in African travel*

J&C Voyagers organises individually tailored African holidays for those looking for something special, memorable and away from the crowds. We will incorporate your distinct wishes and aspirations, with no detail overlooked, so that you are able to relax completely.

We have a passion for Africa and conservation of its wildlife, peoples and incomparable scenery. With over 20 years' experience exploring Africa and putting outstanding African holidays together, we can discuss hundreds of safari lodges, camps, beaches and city hotels with first-hand knowledge.

Telephone 01373 832111

Email mail@jandcvoyagers.com

www.jandcvoyagers.com



HolidaysNearLongleat.co.uk

A Dedicated website for;

Self Catering, Bed & Breakfast

Guest House, Camping & Caravanning

Accommodation all close to the Longleat Estate

npv plumbing & heating

Installation • Servicing • Repairs

Bathroom and tiling specialists

All plumbing and heating work undertaken

Our fully qualified plumbers offer all general plumbing services from boilers to bathrooms. We will gladly advise clients on the most suitable products for their property – be it heating systems, boilers, radiators, bathrooms or showers.

07738 940355

www.plumbersfrome.co.uk

Hypnotherapy

If you need help with:

Anxiety

Depression

Phobias (such as flying or spiders)

Panic attacks

Relaxation

Weight management

Smoking cessation

Natural childbirth

Confidence

Public speaking

Exam nerves

and much, much more...

Call ANJI HOLLAND on
07944 647 978 / 01373 832 898
to enquire or just for a chat

www.hollandhypnotherapy.com

With practices in Chapmanslade and Bath

I am a member of the National Council for Hypnotherapists
and am bound by their code of practice and ethics

Corsley WI

August News



The Reading Room in Corsley was filled with the lovely scents of flowers and baking when members of Corsley WI met for their August meeting. There was a wonderful display of tea loaves, treacle tarts, coffee cakes, jams and preserves, fruit and vegetables, flowers, photographs and handicraft items from members, at the Corsley WI Flower, Handicraft and Produce Show. Independent judges spent the afternoon deciding on the winning entries and the trophies were awarded at the meeting in the evening. The winners of the sections were: Photography – Caroline Higham; Homecraft – Amanda Bain; Vegetables – Charlotte Beswick; Flowers – Di Dowling; Handicraft – Amanda Bain. The Gardening Club prize for an arrangement in a teapot was won by Caroline Higham, with Carol Seward second and Pauline Scott third. The Theresa Watts Cup for the best Christmas stocking was awarded to Amanda Bain. The overall winner was Amanda Bain, with Caroline Higham coming second and Jean White in third place. At the end of the meeting, an auction of some of the produce and cakes was held, with Pauline Scott as our very able auctioneer.

One of our members, Amanda Bain, had recently attended the Garden Party held

at Buckingham Palace for WI members in recognition of the centenary of the WI. Amanda said that she had found it long and exhausting but had thoroughly enjoyed her day out. She was delighted to have been introduced to the Duchess of Cornwall, Princess Alexandra and also the Countess of Wessex. It was a very windy day and the ladies had to hold onto their hats but Amanda said the event catering for about 8,000 people was extremely well organised and she was impressed by the precision of the neatly cut sandwiches and dainty cakes! Judith Helliard thanked Amanda for telling us about her trip.

We have our own special occasion in September, with the Corsley WI 95th Anniversary and NFWI Centenary Dinner on 10th September, 6.30pm for 7pm. We would like members to bring a photo or some other item of memorabilia illustrating life 95 – 100 years ago, to put on our display table. The competition is for a brooch. Our next normal meeting will be in October.

New members are welcome to join us from October. For further information about our WI, please ring Carol Seward on 01373 832446.

Everyone is very welcome to join us for the following activities:

Bridge Club	First and third Tuesdays each month, 2-4 pm, Corsley Reading Room
Coffee Morning	First Tuesday each month, 10-12 noon, Corsley Reading Room
Gardening Club	Third Wednesday each month, venues as per club programme
Lunch Club	Last Tuesday of the month, 12.30 pm, various venues

More details on the Gardening Club and Bridge Club from Pauline on 01985 215760



The buzz from the Bee Hive



Welcome to the news feature from the 'Bee Hive' – Busy Bees Pre-School, Chapmanslade

Busy Bees will return to their 'hive' on 1st September ready for a new term. Most of our younger children are returning and lots of new little ones will be coming along for the first time. We had to say goodbye to our older children at the end of last term as they left to start their new journey at various primary schools. The majority of them will start at Chapmanslade C of E School and we are grateful to Gemma and Diane (teachers at the School) for helping their transition by visiting Busy Bees and letting the children visit the school and meet some of their children. We had an end of year party for our leavers with all the children joining in as well as a few teary parents!

Work on the garden will be complete by the time this goes to print. We would again like to thank Aster Communities for their contribution towards the AstroTurf. We will have a covered pergola with log seats and various vegetable beds so that the children can plant seeds and flowers (we will also be buying a small greenhouse to continue our planting theme). The paving slabs will allow the children to ride bikes and scooters more easily and the AstroTurf will ensure that we always have green 'grass' no matter how often it is used. We have also installed new kitchen units to give more cupboard and worktop space for the team so that meal times are easier.

The first week of new term starts with helping the new children settle in and introducing them to other Busy Bees as well as helping

them choose their Key Person. All the children will share details and photos of their holidays and new learning journey books will be opened. During September the children will share information about themselves so that a display board can be created, be involved with mask making as part of carnival week as well as cooking when they will be involved with making fruit salad, pizzas, soup, mug cakes and biscuits.

If you would like further information please contact Kelly Williams (Manager) on either 07749257608 or email her at busybeespre-school@hotmail.co.uk

Sally Evans
Chair, Busy Bees Pre-School
01373 832906

Farm walk for The Prince's Countryside Trust

'Thank you'

To everyone who came to High House Farm on Saturday 25th July to support this Trust helping small businesses in the countryside a collection of £85 was made. Thanks also go to David and Alice Helliard for making everyone welcome!

www.princescountrysidefund.org.uk

Chapmanslade Motor Services

**Vehicle repair
and servicing**

**Brake
specialist**

**MOT preparation
and repairs**



**Batteries
Exhausts
Tyres**



Quality service at competitive rates

FREE ~ wheel balancing and tracking with new tyres

FREE ~ courtesy car

Electronic diagnostics available – most makes covered

Green Farm Industrial Estate, Chapmanslade

01373 832188 or 07711 256927

**Busy
Bees**



01373 455911

SPECIALISTS IN CLEANING & GARDEN MAINTENANCE

Our services include:

**Domestic Cleaning
Commercial Cleaning
Carpet/Upholstery Cleaning
One-off spring cleans
Trauma Cleaning
Builders' Clean
Garden Maintenance
House and Garden Clearance**

Amy: 07971 921651 or Caron: 07971 921617

E-mail: info@busybees2000.co.uk

www.buzzybees2000.co.uk

JOHN E S JONES

**GENERAL
BUILDER**



Carpentry, painting and
decorating, extensions, uPVC,
facias and gutters, fencing,
decking and patios

Also general repairs

Telephone 01373 832600

Mobile 07074 832600

Bring your garden to life using...

The power of colour

Imagine our world in black and white, just think how different it would look!

Colour brings things to life and without us realising it affects our mood and the way we think about things in our day-to-day life. So this month I would like to encourage you to get in touch with your creative side and add a little dash of colour to your garden.

Adding colour is easy and it's the simple things that make the big difference. So, simple idea number one is all about the way in which you arrange things in your garden. Imagine a painter; if they wanted something to have the biggest impact and significance they would use one solid colour as a background and use contrasting colours over the top. It's the same concept in your garden. Around the edge of your garden as your background plant evergreens; laurels for example. In front of these then plant your perennials. Pastel colours are very popular at the moment and using them is a way to add subtle colour to your garden. Not only good for the colour side of things, perennials will flower every year and will attract the bees and other wildlife into your garden.

Potted flowers are something we've sold a lot recently at the garden centre and are another easy way to introduce colour into your garden. Although when in flower the contents of the pot are the main attraction, the pot itself has a lot to add to the show as well. Glazed and glossy pots are now

something of a more familiar sight because when the flower is over, they still offer a somewhat attractive sight. Why not decorate your own pots for a more unique and personal touch?

Moving away from the flower side of things, have you ever thought of stepping outside the box and moving away from the brown fencing and garden furniture everyone takes a liking to and again, adding a little bit of colour? Painting your fence or garden bench from brown to blue could make so much difference. You could do anything ... from a stripy white and blue panel to an artistic design hand painted with patience and skill. Your fence is your canvas!

Finally, who says fairy lights can only be used at Christmas? Add some solar powered decoration to your garden and watch it come to life as the sun goes down and the stars come out. Twist them round a tree or hang them from your newly decorated fence; wherever they are, they are certain to add that little sparkle and make your garden not only enjoyable throughout the day time, but night time too.

Remember, it's all about that little touch of colour ...

*Kaylee Evans
Acres Supply Garden Centre, Corsley*

TEA & sympathy

Considerate catering at a difficult time

All our food is homemade, we provide delicious teas, sandwiches and cakes through to more elaborate options.

We offer a truly bespoke, caring and professional service.



Telephone Kim Clark on 01373 832151 or 07843 056916

e-mail kim@teaandsympathy.uk.com

www.teaandsympathy.uk.com

CHANTRY CONSTRUCTION

stone walling • patios

drives • extensions

prompt reliable service

mini digger and driver for hire

01373 836787 07855 343388

COMPUTER & LAPTOP REPAIRS
UPGRADES / SYSTEMS & LAPTOPS

VIRUS REMOVAL / BROADBAND
WIRELESS / NETWORKING



FAST, FRIENDLY, PROFESSIONAL SERVICE
COMPETITIVE RATES
ONSITE OR WORKSHOP

CompTIA
A+ Certified

call
01373 302901

www.ntscomputing.co.uk
help@ntscomputing.co.uk

LAPTOP REPAIRS

We also replace
laptop screens,
keyboards,
CD-DVD drives,
fix overheating
and more

Forget-me-not

• GARDENING SERVICE •



Weeding, pruning, planting,
fence painting, etc

01373 464416

07890 850465

Do you need a plumber? Call...



Paul Antell Plumbing

07890 366832

01373 467427

Professional, reliable, friendly and local
paulantellplumbing@talktalk.net
www.paulantellplumbing.co.uk

Weatherproof Windows Co.

- Renovation
- Replacement
- Draught-proofing
- Small repairs
- Replacement cords, pulleys handles, weights, glazing

All types of sash and wooden windows
suitable for Listed Buildings

Ian Gallagher
Fleecemill Cottage, 1 The Steps,
Buckland Dinham, BA11 2QR

Tel: 01373 474637 Mobile: 07929 938419

www.weatherproofwindows.co.uk

EVERGREEN GARDEN SERVICES

Garden maintenance and landscaping,
lawns, strimming, hedging, pruning
long and short term maintenance,
patios fencing, turf and seeding.

Over 20 years experience in
horticulture, landscaping and estate
management.

Contact Ben Hale

01373 825495

07879 492283



Rose Knight

House sitting and
dog and cat minding
service

01373 464904

07773 435254

knight_rosemary@sky.com



BOILER SERVICING & REPAIR

An independent family run company

www.darchoil.com

We service and repair oil fired boilers.
All of our technicians are OFTEC registered and approved.
Call us on **01935 473302** for an instant quote or
visit www.darchoil.com and fill out the form and one of
our team will call you back during office hours.

Call us on **01935 473302** or email info@darchoil.co.uk for more information

ROGER PATCH GENERAL BUILDERS

Also offering purpose-made joinery

We now have a HETAS registered fitter enabling us to fit
Woodburners, Multifuel Stoves and Chimney Liners.

Cedar Cottage, Wolverton, Zeals, Wiltshire, BA12 6LW

Telephone 01747 840449 Mobile 07971 686973

Email rogeratwolverton@yahoo.co.uk

The Elizabeth Evening 2015 round-up

The Three Musketeers

Swords have been re-sheathed and heaving bosoms once again released from their stays for another year to gambol unfettered across the fields of Corsley, which must all mean that another rip-roaring Elizabethan Evening has come and gone.

And what a year it was...

A near-capacity audience of around 400 sat down to an fine evening of energetic entertainment from the Illyria Theatre Company, with M 'Lady finally getting her just deserts and Cardinal Richelieu's schemings being ultimately foiled, with lots of dramatic action, sword-play and humour in between. We also saw the return of Calico Jack, who provided our pre-performance strolling entertainment.

A dozen Aga's across Corsley and beyond were kept busy on Saturday preparing the Corsley Cassoulet for those 225 canny people who opted for the pre-performance supper, and judging by the empty plates returning to the kitchen, it went down a storm.

A special mention must go to the comely maiden tasked with cooking the 500 sausages. Almost undaunted, into the sea of sausage she plunged, to emerge several hours later, looking content and satisfied after her afternoon's exertions.

Behind the scenes, the Committee of Errant Ne'er do wells, corralled by Sir John D'Helliari, wish to thank all our generous sponsors and the army of volunteers who help on the day, and those who foolishly hosted committee meetings, only to find

their larders and wine cellars ransacked in the process. Of the many behind-the-scenes helpers, we especially missed the talents of Maggie and her magic marigolds, this year.

The dust hasn't yet settled on this year's accounts, but I expect Phil the Bean (counter) will announce that in excess of £6,000 has been made for donations to good causes.

But of course we all secretly know the audience comes to see what travesty of a foreplay has been dragged from the tortured minds of its playwrights. This year was no exception, and the M'Lady Boys Touring Troupe delivered their new work; 'The Cassoulet Cavaliers' that once again plumbed the depths of acting ineptitude with great panache and very little else. A debut performance by the Mighty Toulouse, who handled his part well when faced with the unwarranted attentions of M 'Lady Mantha, another new convert to the Corsley Stage.

For those die-hards wishing to re-live this experience and the 2013 and 2014 Foreplays, search YouTube for Corsley Foreplay.

So look out for The Elizabethan Evening details for 2016 and keep early August weekends free, so you too can join in the fun.

*Your 'umble servant
Sir Avaloy – bush-tamer to the stars*



LEANDER MORALES



TOO MUCH LIPSTICK



JESS VINCENT



THREE CORNERS



FROME STREET BANDITS

TICKETS ARE AVAILABLE FROM FAIRFIELD FARM SHOP

www.seetickets.com / www.wmafestival.co.uk

Gm3
MUSIC
PRESENTS...

IN ASSOCIATION
WITH THE
WESTBURY
Music & Arts
FESTIVAL

THE LIVE SESSION

SAT 03 OCTOBER

DOORS 7:30PM | **DILTON MARSH
VILLAGE HALL**

TICKETS

£6.00 ADVANCED / £8.00 DOOR

**THERE WILL BE A BAR
AT THIS EVENT**

LEANDER MORALES



**EP
Launch**

Chapmanslade Parish Council

Parish Council Briefing

Phil Jefferson reports on the parish council's activities in August

The Parish Council doesn't usually meet in August but we needed a special meeting on August 4th to receive and consider the results of the Lochailort questionnaire. About 30 residents attended the meeting.

At the beginning of the meeting, and during a week in which the funerals of four village residents were to be held, we paused to remember the seven village residents who have died since the beginning of June. Our thoughts and prayers are with all their families.

Barters Farm - proposed development

We received a report from James Croucher, a planning consultant employed by Lochailort Investments, on the response to the questionnaires completed by village residents earlier in the summer. There had been an excellent response, with 148 residents completing the questionnaire. This represents approximately 60% of properties in Chapmanslade.

We had carried out our own analysis of Lochailort's questionnaire before the meeting. This showed a diverse range of opinions in the village:

- 92 (62%) supported the principle of new housing and community open space on the Barters site.
- 43 (29%) opposed.

- 95 (64%) agreed that the village would benefit from more affordable housing.
- 46 (31%) disagreed.
- 117 (77%) agreed that the village as a whole would benefit from enhanced traffic calming.
- 26 (17.5%) disagreed.

The most telling responses were in relation to the question which asked whether too many, too few or the right number of houses were being proposed:

- 67 (45%) said "too many"
- 32 (23.5%) said "about right" and
- 2 (1.5%) said "too few".

In addition

- 8 (5.5%) answered the question by saying "none at all".

Taking into account those who supported the principle of new housing but who thought 37 houses were too many, we were able to calculate that 38.5% were in favour of the proposals as they stood with 58% being against.

Accordingly, and after much discussion, the Parish Council resolved to support the principle of new housing on the Barters site. However, we also resolved that 37 houses were too many. We were asked by Mr Crouch to state what number of properties we would deem acceptable. Lochailort

had indicated that they would be prepared to reduce the number to 32 but they considered that fewer than 30 properties might not be a viable proposition. Some of the residents had said 20 would be an acceptable number. Our view was that it was not appropriate for the Parish Council to make a judgement on this matter.

Our discussion concluded at this point and we now await a response from Lochailort on whether or not they will be in a position to present further plans proposing a smaller number of houses. This matter has huge implications for the village and we will keep you in touch. Please accept our thanks for the care you all took in making known your views on Lochailort's proposals. The information you provided in your response will be of considerable help to the Parish Council in the coming months.

Other Planning Applications.

53 High Street.

Having been granted planning permission to build two properties in the garden to the rear of no 53, the owners have now submitted a revised application, proposing minor modifications to the original plans. The Parish Council had supported local residents who had objected to the original proposals, principally on road safety issues, but on this occasion we did not feel that we need make any observation.

Siennas Valley

Following Wiltshire Council's decision not to grant planning permission concerning the mobile home located at Siennas Valley in Huntenhull Lane, Wiltshire has now issued an enforcement notice requiring the owner to remove the caravan and all its

'paraphernalia' and to restore the land to its original state. The notice came into effect on August 14th, subject to appeal, and the owner has six months to comply with the notice. The owner has a right of appeal against the notice and also against the planning decision.

Wiltshire Housing Site Allocations Development Plan

Wiltshire Council is currently preparing a development plan identifying land which could be used for future housing development. Three strategic land availability sites, known as SHLAAs, nominated by landowners, exist for our village at Barthers Farm, the industrial estate at Green Farm and the field at the western end of the village next to Black Dog Woods. Wiltshire has asked for our views and we have responded by saying that Green Farm should be retained for industry rather than housing.

Highways matters

Part of the road surface at Huntenhull Green has subsided, hence the current road closure. Wiltshire Council is insistent that the section of road is not part of the adopted highway, but this is disputed by local residents. As a "gesture of goodwill", Wiltshire has agreed to carry out remedial repairs.

Please report highways issues to Keith Muston, at themustons@btinternet.com or 832755 and public footpath issues to Adam Oakley at adam@oakleyfrome.co.uk or 832437.

Village Hall and Village Hall Playing Field

By the time you read this it is hoped that work to relay the village floor will have been completed and that, once again, the hall

is fully operational. It has been a worrying – and expensive – time for the village hall committee and they deserve all our support. It appears that five, rather than two, trees lining the track to the village hall have died recently and very suddenly. A village resident has suggested that a chemical may have been applied around the base of some of the trees. Why would anyone want to do this, especially as the trees were planted as part of our celebrations to commemorate the Queen’s Diamond Jubilee? What motive would anyone have to want to kill them? Do let Adam or me know if you have any further information.

The village hall committee are also concerned that a resident has located a fence on land which is shown on the village hall’s deeds as being owned by the village hall. They are currently obtaining legal advice on this matter.

Next meeting

Our next meeting will be on **Tuesday** 8th September, 7.30 pm at the school. The main item will be to receive an update from the owners of Thoulstone Park on their future plans. In particular we will learn about a forthcoming planning application concerning employment/work/office premises on the site. We are meeting on a Tuesday to avoid a clash with the Warminster Area Board meeting at our village hall on Thursday 10th September.

The agenda for the Area Board meeting includes a report on child poverty in our area, and updates on the campus programme, Safe Places and community engagement. There will also be an opportunity to question the Wiltshire councillors for the Warminster area, including Fleur de Rhé-Philipe, our councillor. Refreshments are available from 6.30 pm and the meeting starts at 7 pm.

And finally...

Please see the advert elsewhere in The Bridge for the defibrillator awareness event which will be held at the village hall from 9.30 am until 12.30 pm on Saturday 26th September. This is an open invitation for everyone to attend and to see how the defibrillators in our two villages and in and around Frome can help to save lives.

Phil Jefferson
832845
phil.jefferson@virgin.net

**Piano Exam
Successes**

The following pupils of Debbie Rickhuss, Temple, Corsley have succeeded in passing exams as set by the Associated Board of the Royal Schools of Music.

- Georgia Harvey Prep
- Daniel Grogan Prep
- Harriet Henley Grade 1
- Lucas Crabbe Grade 1 with Merit
- Silas Hamilton Grade 2
- Naomi Watson Grade 3 with Merit
- Eva Perkins Grade 3 with Merit
- Eva Perkins Grade 5 Theory
- Arthur Burgess Grade 3 Theory

Congratulations to you all!

Debbie Rickhuss
01373 832829
07747 499990
rickhuss@tiscali.co.uk



Whose is this?

Caroline Le Vine, Counsellor in Corsley

Have you ever walked into a room where there are other people and instantly felt peculiar?

Anxious, perhaps, or angry when you'd been fine just moments before? Assuming that you had no reason to feel threatened by or cross with the people you've just joined, where did this feeling come from? Is it yours? Or is your 'sixth sense' coming into play? Is what you're feeling really yours or are you feeling what your companions are feeling, even though they haven't expressed it and may not even be consciously aware of having the feeling themselves?

Sounds like psycho-babble? Maybe – unless you've experienced it! It's an awareness I use a lot in my work. Maybe I'll be suddenly overwhelmed by sadness or feel a sense of enormous pressure to provide a solution for someone. Once I've checked that the feeling isn't mine (and made a mental note of it if it does belong to me - need to deal with this later, possibly in supervision), it's time to

explore whether the person I'm sitting with is experiencing this feeling. Are they struggling with sad feelings they can't express? Are they silently begging me to offer an answer to their problem?

I don't think I'm special in having this ability. I think we all have it and that we are a lot more sensitive to others than we give ourselves credit for. It's just that we often dismiss the peculiar sensations that we pick up and the thoughts they trigger that seem odd or unjustifiable. I know that, when I've gone with the feeling I get and introduced it gently into the conversation, the result is usually startlingly positive. So, next time you feel or think something unexpected, maybe you can use it to ease someone else's discomfort.

I practise at St Margaret's Church, Deep Lane, Corsley. Your first half-hour meeting with me is free.

07817 192008

enquiries@carolinelevine.co.uk

www.carolinelevine.co.uk

or find me on www.counselling-directory.org.uk

Famous festival fiddler!

Local violinist and mother of two, Katherine Brewer, has been more than just a busy mum this summer. The Chapmanslade-based musician and engineer Katherine, recently took to the stage to perform at the world famous Glastonbury Festival and The Village Pump Folk Festival as well as making more on-stage appearances at some smaller events in the area.

Katherine has been working with Westbury-based musician Leander Morales and they will be performing together at an event called The Live Session, at Dilton Marsh Village Hall on 3rd October as part of the Westbury Music and Arts Festival. Tickets cost just £6 in advance or £8 on the door and are available from The Fairfield Farm shop as well as www.seetickets.com

Steve Dayman-Johns

Driving Instructor

Condensed Courses and
Gift Vouchers available

Tel 01373 865422 - Mob 07730 445648

email stevekdj@gmail.com

JMW ACCOUNTING

Cost-effective, no-nonsense, efficient accounting, bookkeeping, VAT, payroll and CIS solutions for sole traders and Limited Companies.

Self-assessment and taxation services also available.

- ▶ Fixed fees agreed in advance
- ▶ Free initial consultation
- ▶ Westbury office with free parking

Contact Jackie Welch

01373 822363 or 07790 325321

jackie@jmwaccounting.co.uk

www.jmwaccounting.co.uk

Dashing Dusters

- Cleaning and ironing to a high standard
- General domestic assistance
- Commercial cleaning
- Reliable
- Reasonable rates
- References available

01373 832484 (evenings)

M W Garden Services

20+ years experience

A tailor made service for all types of garden maintenance

Insured and CBI's checked

mark22.weaver@mypostoffice.co.uk

Telephone 01373 832854

Mobile 07921 818452

Getting married? Special occasion?

Classic 1960 Hillman Minx Estate car for hire

Chauffeur ~ bows ~ flowers ~ champagne

Reasonable rates

Please contact Amanda on

01373 827795 or 07720 673698

Hardwood logs for sale

(cut to size if required)

FREE DELIVERY

R M Log Supplies

Beckington

Call Robin on

07876 621929

Offices to let – Corsley

Historic country
house setting.
Excellent working
environment.

Call 01373 832120



Whitbourne Chapel

Thy word is a lamp unto my feet and a light unto my path

A Preacher's Journey

My life began in Guernsey in 1946. Later my father's work took him to Woking when I was about 12. I'm thankful I was always sent to a Sunday School, but it was in Woking, at Horsell Evangelical Church, I really heard the Christian gospel for the first time. I responded in simple faith to an invitation to ask the Lord Jesus Christ into my heart. I'm grateful for the many good role models I experienced in that church – people having a godly influence on me, without even knowing it.

In Horsell, I met Jeannine, whom I married in 1969. We have two children, Naomi and Marcus, and thank God they both became Christians and are serving the Lord. They're both married and we now have four grandsons.

We look back and praise God for the great biblical teaching received from various pastors in Horsell, which I now try to pass on through preaching and Bible studies. I began preaching occasionally in about 1974, but it's only recently more opportunities have been given to me, including being part of a team ministry to Myanmar.

I trained in printing and since 1990 I have worked as a freelance proofreader, 'retiring'

to Frome in 2014. One kind of reading I can recommend is the Bible. The psalmist wrote in Psalm 119 verse 105 "Thy word is a lamp unto my feet, and a light unto my path".

While it's good to have role models, whether in church or other areas, Christianity cannot be imitated; something must happen within our hearts to make it real. Jesus said to a very religious Jewish teacher that he must be born from above.

John Hobson

Visiting preacher to Whitbourne Chapel

Thank you, Anna!

The Chapel's technical expert is Anna Mead, daughter of Chapel Secretary, Ray. Anna deals with non-working clocks and with recorded music when we have no organist. She also deals with building and decorating issues, and has recently installed an automatic light on the organ loft stairs. Anna's also in charge of the Chapel's website. Thank you for your hard work, Anna!

Gill Redman

01985 215062

paradiselost@btinternet.com

Please note I have a landline phone number at last!

Regular times

Services every Sunday morning at 11.00 for about an hour (coffee served at 10.45)

Chapel Prayer meeting every Sunday morning from 9.20 - 9.40

Communion on the first Sunday of each month at 12 noon for 15 minutes



COMPUTER PROBLEMS?

01373 812804

Email
Advice for new users
Anti-virus defence
Web sites
Custom programming

Networks - home & office
Home tuition
Web access
Privacy & security
Repairs

www.technojeeves.com

info@technojeeves.com

No Job Too Small



Local Electrician

Part "P" registered NAPIT approved
Domestic and Commercial Work Undertaken
Third Party Testing

Call for a Free no obligation Quotation

Tel: 01749 850769

Mobile: 07779 429786

email:

iain@fushi-electrical.co.uk

www.fushi-electrical.co.uk



E G MARTIN LTD Heating Oil Distributors

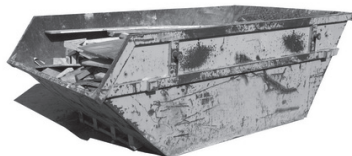
Telephone 01373 822784

Victory Road, West Wiltshire Trading Estate
Westbury, Wiltshire, BA13 4JL

WESTERN SKIP HIRE

Telephone 01373 865247

Victory Road, West Wiltshire Trading Estate
Westbury, Wiltshire, BA13 4JL



Windows, Doors & a whole lot more!

- **ENERGY RATED** windows - reduce your heating bills
- **NEW SECURITY** windows with Shootbolt locking
- **EXPERT FITTING** by our own fully trained team
- **REPUTATION** Over 26 Years of satisfied customers

Come & visit our Indoor Show Village

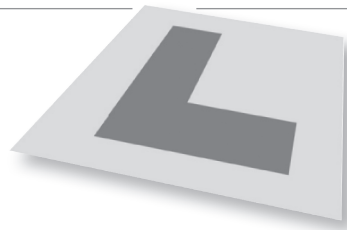
See our full range of Windows, Doors
Conservatories & our **New Orangery!**
at Woodcock Industrial Estate, Warminster

Tel 01985 215566  www.NewWindowsLtd.co.uk

newWINDOWS



Tales from the passenger seat



The ability to multi-task, both physically as well as visually is a necessary skill that some pupils need more time than others to develop. Initially for the learner who has never driven before, it is very much a physical 'drive by numbers' process. The pupil learns the basic functions of how to control the car. They are often thinking so much about what they are going to do inside the car, that they do not really perceive what is happening outside the car. As they progress, and this physical aspect of driving becomes more muscle memory, then they are better placed to see and start to understand what is going on outside the car. But they not only have to learn to 'read the road', but to visually multi-task.

Staring at a given object is a common trait; studying one single aspect of what perhaps one particular vehicle is doing with no visual awareness of what any other nearby vehicle is up to is part of the normal development and something I daily have to be aware of; the pupil will not 'see' or register the blindingly obvious. This might be red traffic lights, or a lorry stationary in front of us, or a person walking across a zebra crossing. Sometimes a pupil, despite intellectually knowing the give way to traffic coming from your right at a roundabout rule, will quite happily go to pull out in front of a lorry, bus, cyclist, etc., that is maybe no more than four feet from our right. They are looking

beyond the vehicle into the distance, can't see anything coming and so intend to pull out... they haven't registered the immediate danger only feet away.

If a person is not a natural driver, then practise in a car at home (once a certain standard has been reached), can be useful in helping them to learn to do and see more. Until a certain level of competence has been reached, for some it can be a difficult or slower learning curve. Panic can make a pupil on approach to a busy situation ask what shortly afterwards they admit was not rational:

Me: "At the roundabout take the first exit, the road leading off to the left".

Pupil: "Ah, so that means turn right".

Me: "No, it means turn left.."

Pupil: "Ah, so you mean me to go ahead .."

I recall a pupil who had spent far too long studying a route sign rather than watching the road, and then asking "What do the numbers after the name of the town on a sign mean?" Quite how they had got to the age they were without understanding it meant how many miles to that particular town, I don't know but, hey ho, its all in a day's work.

Steve Dayman-Johns

Corsley Reading Rooms

Attractive function hall, smaller meeting room and kitchen facilities all available for hire

Parties • clubs • meetings • classes • etc

Contact Rosemary Collins for details

01373 832789

NEED HELP WITH YOUR GARDEN?

Hedge cutting • Lawn mowing
Strimming • General gardening

Call Rob Clements

Tel 01373 832683 Mob 07586 337118

Wren House

Residence for the retired and elderly

Wren House in Warminster is a long-established, elegant retirement home, specialising in individual care in gracious surroundings. Having just thirteen rooms, each with a private bathroom, we are able to offer the ambience of a family home, together with caring staff and the facilities to enable our residents to enjoy their later years with dignity.

Wren House serves fresh, locally-sourced, home-cooked food. Residents enjoy a varied activity programme which includes a gardening club and our own choir.

Mrs Ellie Simmonds

Wren House Ltd, 32 Vicarage Street, Warminster, BA12 8JF

Telephone 01985 212578

wrenhousewarminster@hotmail.com

www.wrenhousewarminster.co.uk

ST DAVIDS WHITSAND BAY CORNWALL



Holiday Let
Sleeps up to 8
01373 464870

www.stdavidswhitsand.co.uk



Kevin Knight Clock & Watch Repairs

Over 30 years' experience
All clock and watch repairs
undertaken. Free estimates.
All work guaranteed

01722 331969 or 07900 928451
email kevindavidknight@gmail.com

Paul Ledbury Quality Painting and Decorating

30 years experience

**INTERIOR AND EXTERIOR
GENERAL MAINTENANCE**

**5 Hampshire Gardens
Westbury, Wiltshire
BA13 3EX**

**Telephone 01373 858163
Mobile 07976 242045**

Defibrillator Awareness

Your local event and fundraiser

Saturday 26th September

9.30 am - 12.30 pm

Chapmanslade Village Hall



Come along and enjoy bacon rolls and sausage sandwiches with tea or coffee in aid of the on-going upkeep of your local defibrillator

**Defibrillator demonstrations at
10 am, 11 am and 12 noon**



Welcome to the village communities of Chapmanslade, Corsley, Standerwick and Trudoxhill from the

Friends of Frome Hospital

Registered Charity 275898

Frome is the first community in the country to establish a comprehensive network of life-saving defibrillators for use in a cardiac trauma situations

Chapmanslade Village Hall presents an evening of
Cool Jazz and Pop Classics

with

Frank's Band

Saturday 17th October from 7.30pm

Licensed Bar · Hot Supper

Tickets £10

from Carol 01373 832875 or Ken 01373 832034

Proceeds to Chapmanslade Village Hall

Please purchase tickets in advance to reserve your supper!

Corsley Festival Choir

Come and join us!

Corsley Festival Choir re-starts on Monday 7th September and we will warmly welcome singers – new ones and those who have sung with us before. We meet at St Margaret's Church in Corsley every Monday evening from 7th September until our Christmas Concert on Sunday 13th December.

You could come along to check us out when rehearsals re-start on Monday 7th September at 7.30 pm and join us for a glass of wine before we get down to the happy business of making music. From then on our Monday evening rehearsals start at 8 pm.

This season we are singing a programme of festive choral music including Vivaldi's 'Gloria', Christmas carols and signing off with Handel's 'Hallelujah Chorus'.

For more information about the choir, please contact me on 01373 832418.

Jenny Rutty
Choir member

CLARION

electrical

Part P registered & guaranteed



Making household electrical circuits work safely

clarionelectrical@btinternet.com

*Fifteen
years in
the trade*

01985 216641 07766 355237

Jammy Jewellery

Personalised fingerprint
and footprint jewellery



www.jammyjewellery.co.uk

Allsorts of Fencing

Peter Allsop

allsortsoffencing.co.uk

All types of domestic and agricultural
fencing supplied and erected

Also:

- Decking and patios
- Sheds, pergolas and archways
- Topping of fields and paddocks

Allsorts-of-fencing@hotmail.co.uk

01373 832339

07710 180551

Black Dog Farm Bed & Breakfast



You will find a friendly welcome and a
hearty breakfast in our listed Georgian
Farmhouse. The quality en-suite bedrooms
contain everything you need to ensure a
comfortable stay.

Lyn and Fraser Mills

01373 832858 or 07878 954563

Black Dog Farm, Chapmanslade,
Wiltshire, BA13 4AE

www.blackdogfarm.co.uk

DAVID NOBLE

APPROVED ELECTRICAL CONTRACTOR

- Complete installations
- Minor works/repairs
- Testing
- Intruder alarms
- Lighting design



5 Swaledale Road
Warminster, Wiltshire
BA12 8FH

Tel 01985 214630
Mobile 07970 618232
dcnoble@btinternet.com



KB Landscape

30 years in landscaping

Phone

01373 832371

Mobile

07951 297173

Kevin Brixey - for quality and experience

5 Red Cottages Corsley Warminster Wiltshire BA12 7PS

Landscaping
Patios and paths
Turfing and seeding
Brick and stone walling
Decking and pergolas
Block paving
Gravel drives
Pond work
Fencing

A view from over the hedge...

Countryside Matters

Down memory lane

John and I took on the tenancy of High House Farm, Corsley in September 1990 some twenty five years ago. We arrived with all our farm equipment being carried on tractor and trailer. On August Bank Holiday 1990 we broke down and held up the traffic on the A303 while the Belgian student helping us on work-experience stopped an Hungarian motorist, who then phoned a mechanic to come to repair the large tractor wheel. Language difficulties were overcome, the tyre replaced and the A303 was moving again.

Moving large corn-bins on trailers was our biggest headache: all the bridges on the B-roads between our previous farm near Taunton and Corsley had to be checked and measured so that the trailer and corn-bins could go underneath.

Young cattle were moved up in stages with kind neighbouring farmers from Corsley and Horningsham looking after them in our absence. The milking cows were transported

in lorries after milking in the morning, driven carefully under instruction from John, and settled in to their new environment before milking in the afternoon.

Over the years there have been lots of highs and lows in our farming life. One of the 'highs' was seeing our son David graduate from Seale Hayne Agricultural College and then go to work on farms in Canada, Australia, New Zealand and Zimbabwe. David returned home some fifteen years ago to help run the farm.

In 2001 the British farming world was brought to a halt when Foot and Mouth Disease broke out in a small abattoir in the north of England, swiftly moving south to Wiltshire within a matter of days. The movement of people was restricted and the transport of animals to and from farms was halted. For six months dreadful scenes of piles of burning dead animals were televised; they had been euthanised by vets trying to stop the spread of the disease.



Many changes came about after 2001; sadly lots of local markets and small abattoirs closed, but moving stock and record keeping were all improved so that checking animals' movements, whilst initially a mammoth task, would hopefully prevent further outbreaks and spread of Foot and Mouth Disease. Today as each calf or lamb is born it is given an identification tag in its ear which it wears throughout its life.

Since 2001 we have no longer kept the 2,000 sheep that were fattened on the farm here in Corsley and on local dairy farms in the area during the winter months. Like dairy farming, the sales of lamb fluctuate depending on the price paid for the product.

Twenty five years ago we received 18p per litre for our milk; some farmers are still getting around the same price today! There are many reasons for the low price some farmers are receiving today. Ultimately there is a global supply/demand imbalance. Eighteen months ago there was a world shortage of milk, and the milk price was 50% higher than it is today. Milk production increased to meet demand. Now the Russian

ban on EU dairy products, the strength of the pound against the euro, combined with some supermarkets taking advantage of the situation and selling milk as a loss-leader to get people into their stores in the UK retail price-war has worsened the problem for UK dairy farmers: what we have now is the perfect storm!

Dairy farmers throughout the world will go out of business, less milk will be produced, supply and demand will come back into balance and the milk price will rise again - but this will take time. Meanwhile we will simply end up with fewer milk producers and less milk being produced in the UK. A crazy situation considering we are only 70% self-sufficient in dairy products in the UK.

So, what can you do to help? Some of the large UK supermarkets support their dairy farmers: they pay them a price that is based on the cost of production, but some of them do not! If you buy your milk from a supermarket, please choose one that pays its milk producers (your farmers) a fair price.

Judith, John and David Helliard

**WE ARE
MACMILLAN
CANCER SUPPORT**

**Special Event
Macmillan Coffee Morning
Friday 25th September
The Reading Rooms, Corsley
10.30 am - 12.00 noon**

Bring and Buy • Raffle • Collectibles • Indian Style

**Come and support our wonderful team of Corsley and Chapmanslade
volunteers in making this Coffee Morning our best yet.**

Every pound we raise will make sure nobody faces Cancer alone.

For more information contact Judith Helliard 01373 832803

Small ads

£1 for EACH item for sale or wanted (cash only please) - at one of the two drop-off locations)

Please note: no cash, no advert!

The mobile library service visits next on:

Thursday 3rd September

10:10 - 10:30

Corsley, by the Royal Oak pub

10:45 - 11:00

Chapmanslade, outside 132 High St

11:05 - 12:00

Chapmanslade, by the school

Future dates for this round are:

**Thursdays 17th September,
1st, 15th, and 29th October**

Answers to Bob's Bafflers

- 1 Monday
- 2 Vanity Fair
- 3 Three (or sometimes three pairs)
- 4 Greyfriars
- 5 Bonnie and Clyde
- 6 Sierra Leone
- 7 Amen
- 8 Jill
- 9 Henry Mancini with lyrics by Johnny Mercer
- 10 It's the strip of skin running from the tip of the nose to the upper lip, which separates the nostrils
- 11 Zirconium
- 12 Her

Local organisation adverts

£2.00 per month for a small boxed advert or £7.50 for a full page. Full page adverts are allocated depending on space available and cannot be guaranteed. All monies must be at one of the two drop-off locations (Barter's Plant Centre or Acres Supply Garden Centre) by **4pm** on the **19th** of the month. Please note: no cash, no advert!

Trade advertising

Annual trade advertisements (12 issues, when space is available)

1 space	(69mm wide x 33mm high)	£22.00
2 spaces	(69mm wide x 66mm high)	£42.00
3 spaces	(quarter page - 69mm wide x 100mm high)	£60.00
4 spaces	(138mm wide x 66mm high)	£75.00
6 spaces	(half page - 138mm wide x 100mm high)	£104.00

Trade advertisement material should be supplied in print-ready format, to the chosen standard size and correct shape.

For trade advertising enquiries, please contact David James (Trade advert coordinator/
Treasurer) at either thebridge832@gmail.com or 01373 832443.



Garden Machinery Specialist

Authorised Dealer

HONDA

STIHL

SALES • SERVICE • PARTS



Professional Tree Surgeons

- Tree pruning
- Felling
- Hedge trimming
- Barn-dried logs

Andy Brake

01373 832965

www.mendipmowers.co.uk

Green Farm Ind Est, Chapmanslade, Westbury, BA12 4AN

01373 830429

www.newlandstreecare.co.uk

cloud
homecare

Quality care and
support in Warminster
and the surrounding
villages



We are a small, Corsley based care provider

**We provide care to people who need support
to remain living in their own home**

**Please telephone or email us, or visit our
website for further details**

Tel. 01373 832 597 enquiries@cloudhomecare.co.uk
www.cloudhomecare.co.uk

ACRES SUPPLY

WHERE GARDENS GROW



ACRES SUPPLY GARDEN CENTRE
BAY TREE FARM, CORSLEY
NR WARMINSTER
WILTS, BA12 7PP

01373 832591

OPEN 7 DAY A WEEK

www.acressupply.com

FG COLLIER

KITCHENS • BATHROOMS • INTERIORS

WHOLE HOUSE DESIGN & SOLUTIONS



FG COLLIER LTD 29-35 EDWARD STREET WESTBURY WILTSHIRE BA13 3BL
TEL 01373 822227 EMAIL INFO@FGCOLLIER.COM WEB FGCOLLIER.COM