

The Bridge

November 2019

*monthly magazine for the villages
of Corsley and Chapmanslade*



Make it over to the makers market, lots of AGMs, Rock 'n' roll with the Stompers, get crafty for an afternoon, catch a film at Cinema Corsley, chase some chickens, take a shopping trip, there's lots to do in November...



Mendip Mowers

Why Honda?

*There is a simple reason why you will see
so many Honda products still hard at work
after many years of service;
they are built to last.*

OFFERS AVAILABLE THROUGHOUT THE YEAR

- Mowers • Tillers • Brush cutters
- Blowers • Chainsaws
- Hedge trimmers



GARDEN MACHINERY SPECIALIST

SALES • SERVICE • PARTS

www.mendipmowers.co.uk 01373 832965

Unit 7, Green Farm Industrial Estate, Chapmanslade BA13 4JJ



Frome Heating Specialists

J L and M W Knight

**Heating and plumbing engineers
specialising in:**

Oil and gas boiler servicing

Boiler replacement

Energy management

Pressurised hot water systems

Underfloor heating systems

Frome family business established 1964

Stavanger, Corsley, Nr Warminster, Wiltshire, BA12 7QL

Call 01373 832578



199876

The Bridge

monthly magazine for the villages of Corsley and Chapmanslade

Articles

Please submit articles either by email to **viv.thomas146@btinternet.com** or by hand (legible handwriting please!) and take them to the drop-off locations at Barbers Plant Centre, Chapmanslade, or Acres Supply Garden Centre, Corsley by the deadline.

News, reports, updates, thank you's, etc, from individuals or local organisations are free – the more the merrier – keep 'em coming!

File types

Save your files as .doc – please don't send .docx files – I can't always open them successfully.

Advertising

Small ads are £1 for each item whether 'For Sale' or 'Wanted'.

Events/local organisation ads (churches, clubs, playgroups, etc) are £2 per month for a boxed advert.

Full page ads cost £7.50, are subject to space availability and cannot be guaranteed,

If you are advertising, don't forget to take the fee – cash or cheque in a sealed envelope please, to either of the drop-off points (Barbers Plant Centre or Acres Supply).

Please note: no cash, no advert!

Trade advertising

Please see information on the last page.

In this issue...

8 Bob's Bafflers
a cunning quiz

12 Science
biology: changing the world

16 Parish Council briefing
Corsley

Seven Open Doors **21**
news from the pews

Corsley WI **26**
news from the ladies

Parish Council briefing **32**
Chapmanslade

37 Whitbourne Chapel
chapel colloquy

39 Cinema Corsley
fun at the flicks

42 Countryside matters
views from over the hedge

Deadline

**Deadline for articles
or adverts for the next
issue of The Bridge is
4pm 19th November**

**Please note that no
items will be accepted
after this date**

November

Saturday 1st

Chapmanslade Christmas Independent Makers Market –
10 am to 3 pm, Chapmanslade Village Hall

Sunday 3rd

Chapmanslade Chicken Chasers – leaving the Three Horseshoes, Chapmanslade at 11am

Tuesday 5th

Village Coffee Morning 10 am - 12 noon, Corsley Reading Room

Wednesday 6th

Corsley Memorial Playing Field Committee Annual General Meeting – 6.30 pm, Cross Keys

Corsley Cricket Club Annual General Meeting – 7 pm, Cross Keys

Corsley and Chapmanslade Churches PCC meeting– 7.30 pm, High Field, Corsley

Corsley Reading Room Annual General Meeting – 7.30 pm, Corsley Reading Room

Saturday 9th

Rock 'n' Roll Party with the Cleyhill Stompers (supporting Help for Heroes) – 9 pm, Three Horseshoes, Chapmanslade

Thursday 14th

Craft, Cake & Chat afternoon – 2 to 4pm, Chapmanslade Village Hall

Chapmanslade Parish Council – 7.30 pm, Chapmanslade Village Hall

Cheese and Wine Tasting – 7.30pm, Corsley Reading Rooms - please pre-book

Thursday 21st

Community Coffee Morning – 10 am - 12 noon, Three Horseshoes Chapmanslade

Corsley Show Annual General Meeting – 7.30 pm, Corsley Reading Room

Cinema Corsley - 'All is True' – 7 for 7.30pm, Corsley Reading Room

Saturday 23rd

Fun Quiz Night (with hot supper) – 7 for 7.30 pm start, Chapmanslade Village Hall

Tuesday 26th

Christmas shopping trip to Westquay Shopping Mall, Southampton

Wednesday 27th

Light Bites Soup Lunch – 12.30 pm - 2 pm, Corsley Reading Room

Saturday 30th

Corsley and Chapmanslade Churches Christmas Coffee Morning – 10.30 am to 12 noon,
Stable Cottage, Huntenhull Lane



Diary Dates

December

Monday 2nd

Corsley Parish Council Quarterly Meeting – 7.30 pm, Corsley Reading Room

Tuesday 3rd

Village Coffee Morning 10 am - 12 noon, Corsley Reading Room

Sunday 8th

Corsley Festival Choir Christmas Concert - 'Glory Everlasting' – 7pm, St Margaret's Church, Corsley

Wednesday 11th

Corsley and Chapmanslade Churches – Light Bites Christmas Lunch, 12.30 pm – 2 pm, Corsley Reading Room

Thursday 12th

WI Christmas Dinner – 7pm, Royal Oak, Corsley - please pre-book

Friday 13th

Corsley and Chapmanslade Churches Carols in the Barn – 6 pm, Manor Farm, Corsley

Thursday 19th

Community Coffee Morning – 10 am - 12 noon, Three Horseshoes Chapmanslade

Saturday 30th

Corsley and Chapmanslade Churches Christmas Coffee Morning

January

Tuesday 7th

Village Coffee Morning 10 am - 12 noon, Corsley Reading Room

Thursday 9th

WI - The Antarctic – 7.30pm, Corsley Reading Rooms

Community Coffee Mornings

A warm welcome to come along to our community coffee mornings held each third Thursday of the month. We meet at The Three Horseshoes in Chapmanslade from 10 until noon.

So do come along if you have an hour to spare. Meet lots of friends, old and new, for a chat over a cup of Ben's freshly brewed coffee. And if you're new to the village, this is the place to come to be warmly welcomed and to say hello. Pauline, our rector, and Debbie or Candy, our PCSOs, are often able to join us. We look forward to seeing you.

Corsley Show Society

Annual General Meeting

Thursday 21st November
7.30pm, Corsley Reading Room

All welcome!

email general@corsleyshow.org.uk for more information

A History of Chapmanslade



After six years of research and discussion and weekly meetings of the forty History Group members (and four dogs), the long-awaited book has now been launched! It's available at the Three Horseshoes or direct from Joyce on 01373 832845 or at phil.jefferson@virgin.net

The Chapmanslade History Group



Pears Electricians

Nigel Charteris - BSc (Hons) M.I.E.T.



Professional Local Electrician

A HIGH STANDARD OF WORK AT REASONABLE RATES

Part P registered with www.napit.org.uk - Testimonials and references available

Faults & Troubleshooting • Repairs & Improvements
Installation Condition Reports • Boiler Wiring

www.pearselectrical.co.uk

01985 213314 or 07717 534026



OAKLEY

GARDEN MACHINERY

Grove Lane, Marston Trading Estate
 Frome, BA11 4AT

Hayter
 Mountfield
 Lawn King
 Westwood
 Stihl
 Honda
 Toro
 Echo
 Husqvarna
 Shindalwa
 Oregon
 and more...



**For Sales, Spares,
 Workshop Service
 and Repairs**

www.oakleyfrome.co.uk

01373 467712



S B Services



Contact Sean
 07828 671566

*For your garden maintenance
 and home improvements*

STUNNING COASTAL VIEWS ON CORNISH COAST NEAR LOOE



Six bedrooms (sleeps 12)
 Private access onto beach
 Pets allowed

Top class facilities including wi-fi
 Rent for week or even long weekend
 Downstairs bedroom and shower room

For more info: Sandy Parrish 01373 832522

Bride by Design

Bridal gowns and accessories

2 Silver Street
 Warminster, BA12 8PS



Please contact us to
 arrange an appointment
 t. 01985 217216

e. info@BridebyDesign.biz
www.bridebydesign.biz

The **co-operative** funeralcare

- 24 hour service
- Free bereavement advice
- Pre-paid funeral plans

WESTBURY 48 Warminster Road, BA13 3PF
01373 858142

WARMINSTER 3 George Street, BA12 8QA
01985 220105

FROME 1 Nunney Rd, Frome BA11 4LA
01373 473426



southern coop

ORCHARD UPHOLSTERY

RE-UPHOLSTERY OF
ANTIQUe AND MODERN
FURNITURE

❖ FREE ESTIMATES ❖

COLLECTION AND
DELIVERY SERVICE

Telephone Lesley
01373 464870

Sharon's Foot Clinic

SAC Dip FHPT SAC Dip FHPP



Fully insured and highly trained

For the professional treatment of:
Corns · Callus · Cracked Heels
Athletes Foot · Fungal Infections
Thickened Nails · In-growing Nails
Diabetic Foot Care · Verrucas
Nail Cutting · Nail Reconstruction

Contact Sharon on
01373 836734 or 07728 200402

Clinic appointments at
12 Sunny Hill, Nunney, BA11 4ND

Home visits also available

Macmillan Supporters



**THANK YOU
FOR RAISING
£1,301.00**

You're helping Macmillan be right there
for everyone living with cancer

Annual General Meetings

Corsley Memorial Playing Field Committee

6.30pm, Wednesday 6th November

All welcome

followed by

Corsley Cricket Club

7pm, Wednesday 6th November

in the Cross Keys back room

**Marion on 01373 832314,
07796 544565, marion@nmc2.co.uk
or**

**Lesley Pearce on 01985 220479 arandlj.
pearce@googlemail.com**

Macmillan Cancer Support

Another great result!

'Thank you' to everyone in Chapmanslade and Corsley who supported the World's Biggest Coffee Morning by cooking, buying and eating cake at Barters Plant Centre on 27th September.

A special 'thank you' to the volunteer teams from our villages who provided, served and sold yummy cake, or ran the tombola and to Legh and Di and their staff.

'Thank you' for the many generous donations on and before the day. In all, we raised a fabulour £1,301 which is a significant contribution to Macmillan's valuable work.

Thank you again.

Liz Garrett and Anne Good

Bob's bafflers

- 1 What was the former name of Ho Chi Minh City?
- 2 What is the smallest animal to appear on a UK road sign?
- 3 Mali is one of three countries on the African mainland with four letters in its name. Name the other two.?
- 4 What nationality is the 2019 Wimbledon champion Novak Djokovic?
- 5 In which Dicken's novel would you find Mr Nadgett, claimed to be the first fictional Private Investigator?
- 6 The Trans-Siberian Express connects Moscow to which other Russian city 5600 miles away?
- 7 Which one of the 'chasers' in the game show 'The Chase' is married to a second cousin?
- 8 Which flower is the French equivalent of the British Remembrance Day poppy?
- 9 Who wrote the novel 'Lord of the Flies'?
- 10 Henry VIII's third wife Jane Seymour was the mother of which future monarch?
- 11 Who wrote and illustrated the comic strip 'Peanuts'?
- 12 In December 2008, the actor Ian Lavender appeared on 'Celebrity Mastermind'. When asked his name by host John Humphrys, which four words were shouted out by fellow contestant Rick Wakeman?

Answers on page 44

Chapmanslade Chicken Chasers

The Chapmanslade Chicken Chasers next walk is on **Sunday 3rd November at 11am**. Leaving the **Three Horseshoes** car park we'll be heading on a circular route of around three miles along our footpaths, bridleways and lanes. The walks are interspersed with stops to rest and admire the views.

Feel free to get in touch with **Jaimie** on **07740 473725** if you'd like to know more, or have suggestions for a route.

We're a friendly bunch and always love to see new people.
Dogs with well behaved owners, and smaller people welcome.

UPVC REPAIRS WILTSHIRE.CO.UK

FOR PROFESSIONAL WINDOW & DOOR REPAIRS

Are you having a problem with your UPVC windows or doors?

- ✓ Misted glass
- ✓ Broken or faulty window hinges
- ✓ Faulty locks
- ✓ Jammed windows or doors
- ✓ UPVC door adjustments
- ✓ Window and door handles

Call us – we are here to help

All work guaranteed

01373 430010 07795 143228 www.upvcrepairswiltshire.co.uk

the three horseshoes

Open daily from 10AM-11PM
serving delicious home cooked food
(12-3, 6-10 Mon-Sat. & all day Sun.)

Enjoy a refreshing drink in our beer garden
with spectacular views of Longleat and Cley Hill,
or indulge with one of our regular meal deals
by the warm open fire on a bitter winter's day.

We organise monthly events,
featuring live music, comedy + much more!

follow us on Facebook for more details



threehorseshoeschapmanslade



Chapmanslade Village Hall

Can be hired for all your functions:
parties, weddings, meetings, classes, etc

For hiring information, phone
Ken Davies 01373 832034 or email
kennethdavies1949@gmail.com

YOGA CLASSES

Corsley Reading Room

Tuesdays 7-8.30 pm

Wednesdays 5.30-7 pm

(other classes also available)

Jackie Jasper

01373 832301 yogawithjackiej@gmail.com
www.yogawithjackiej.co.uk



**Shake off those pounds and
dance yourself fit.**

Chapmanslade Village Hall
Monday 7.30pm - 8.30pm

Longbridge Deverill Village Hall
Thursday 7pm - 8pm

For all levels of fitness and
NO experience needed.

For more information please contact
Amy 07830 119032



Karina

Mobile Hairdresser

Tel. 01373 832823

Mob. 07742 690337

Advertise here!

For more information
see inside back page

Busy Bees Pre-School Chapmanslade



For children aged 2-5 years
Weekdays (term time only) from 8 am-5 pm

Please contact Kelly Williams to arrange a
visit and a free trial session for your child
Breakfast club and after-school club available
(term time only)

Telephone 07749 257608
busybeespre-school@hotmail.co.uk

For your
Heating Oil Supplies
contact

KINCH FUELS

at their
local depot in
Devizes, Wiltshire

Telephone 01380 727102

*The company you and
your home will warm to*



LUXURY PRIVATE CAR HIRE

A locally based, door-to-door, personal
service for up to six passengers in
air conditioned comfort

AIRPORTS • SEAPORTS • ANYWHERE

For bookings, please call
01985 840088 07903 307734

Mole Catcher

01373836350

07512681111

**No Mole
No Fee**



Kevin O'Mahony

Quality Painter and Decorator

Internal and external painting

Artexing

Wallpapering

Coving

Hand painted kitchen units

07724 349447 or 01985 301197

email kevo7743@googlemail.com

www.thewarminsterpainter.co.uk

JONATHAN CORP

Painter and Decorator

General House Maintenance

Sturford Mead Farm, Corsley

Warminster, Wiltshire, BA12 7QU

01373 832213

Steve Dayman-Johns

Driving Instructor

Condensed Courses and

Gift Vouchers available

Tel 01373 865422 - Mob 07730 445648

email stevekdj@gmail.com



Downlands
TREE SURGERY

Expert Tree Care

Telephone Jon Burgess on

01985 841057

Scrub clearance

Skilled pruning

Tree felling

Stump removal

Qualified and insured

**Free tree health
survey and quotes**

DAVID EDMUNDS & CO ACCOUNTANTS & TAX CONSULTANTS

*Specialists in the self-employed, small and
medium business and self assessment.*

*Preparation of accounts, VAT, PAYE,
income tax and corporation tax returns.*

Personal, friendly service

Evening appointments by arrangement

Telephone 01225 334447

Home 01373 832430

Keep active with physiotherapy

Alison Rossiter MCSP HPC

Chartered Physiotherapist

30 years experience in physiotherapy specialising
in the treatment of muscle and joint problems.

Helping people to improve their health and fitness
through treatment, exercise and advice.

Home visits can be arranged.

Daytime and evening appointments available.

If you need help please contact:

Beckington Physiotherapy 01373 831483

Email: arossiterphysio@gmail.com

www.beckingtonphysio.co.uk

Biology: changing the world

What are cataracts?

...and how are they treated?

The prevalence of cataracts and visual impairment increases with age and is more common in women.

At age 65 about 16% of people in the UK have visual impairment due to cataracts, rising to 71% at age 85 or more. I had a cataract operation about two years ago. I realised that, although I know what cataracts are and that they vary in severity, I didn't know what affects the chances of them developing or exactly how they can be treated.

The lens of your eye focuses light on the back of the eye, the retina, which contains the nerve cells responsible for vision. The lens is made of protein and is transparent and flexible, which allows

you to focus on distant and near objects and is controlled by the eye's ciliary muscles. The lens is surrounded by a capsule which holds it in the correct shape and to which the ciliary muscles are attached. With age, the muscles become weaker and cannot change the shape of the lens sufficiently, which is why most people require glasses later in life.

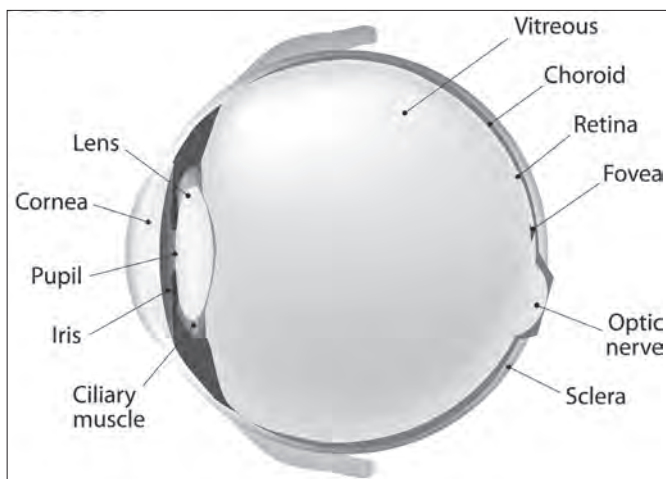
Cataracts are formed when the proteins in the lens start to aggregate and form clumps which are not transparent. This can cause blurring of vision, difficulty in seeing at night, some glare around bright lights, and, when very severe, blindness. In fact, cataracts are the main cause of blindness in the world.

Cataracts develop as we age and family history, smoking, diabetes, eye injury, long-term steroid use, and too much alcohol can

all contribute to their development. Bright sunlight and vitamin D deficiency are also contributory factors. There is no medicine that can treat cataracts but new approaches which avoid surgery are being developed

by scientists. Some practitioners of alternative medicine claim to cure cataracts through special treatments, which are certainly unproven, but which they are willing to sell you!

So, what can be done? The simplest way is to replace the lens with an artificial one. Cataract operations are surprisingly simple



and quick. Drops are put in the eye to dilate the iris, numb the eye and sterilise the surface. The surgeon then makes a small incision and uses ultrasound to break up the lens material, which is then removed through a small tube, and a flexible artificial lens is introduced into the capsule through the same tube. Because the incision is so small, stitches are rarely needed, and post-operative care focuses on minimising swelling and avoiding infection by application of eye drops for 3-4 weeks after the operation.

The replacement lens usually corrects defective vision. Normally the lens corrects vision for either distance or close work. Sometimes, a lens for distance work is put in one eye and one for close work in the other. If you have the operation done privately, it is possible to have multifocal lenses, which operate on the same principle as bifocal glasses, allowing both eyes to focus on distant and near objects.

I have had poor distance vision for 50 years. My treatment, from diagnosis of moderate cataracts to completing treatment, was less than four months, and I now have almost perfect and clear distance vision. However, I still wear spectacles for convenience of having reading glasses always to hand. The only problem with my treatment was being unable to drive for some weeks until my vision stabilised.

Spectacles that are no longer required due to a change in prescription can be recycled by Vision Aid Overseas (www.visionaidoverseas.org) and some local opticians collect spectacles on their behalf.

Nigel Brown is happy to receive comments, questions and, particularly, suggestions for future articles at nigelbrown48@gmail.com

Westquay Shopping Trip

Tuesday 26th November

Pick-up locations:

9 am at the Memorial Theatre, Frome

**9.15 am at the Three Horseshoes,
Chapmanslade**

£13pp (including driver's tip)

**Please contact Renée on
01373 839008 for information
or to book your place!**

I arranged a coach trip to Westquay Shopping Centre, Southampton for our two villages last year and I have booked the coach to do the same this year. This is a non-profit making trip for all of us living in our rural villages. Lots of us are getting older and to drive all that way then, after a long shop, to have to drive home again is a big ask. The coach has a luggage compartment underneath to hold everyone's shopping however much you have!

The coach will pick everyone back up just outside Westquay at 3 pm to be home between 4.30 and 5 pm.

Westquay Shopping Centre is an undercover shopping centre so no-one needs to see the weather again until they get back on the coach! There are plenty of coffee shops and places to eat within the centre.

Should we make a little profit from the coach cost, the money will be donated to Sanitary Protection for Refugees.

Renée Colet



**WESTQUAY
SOUTHAMPTON**

ALLSOP CARPETS & FLOORING

DOMESTIC ♦ COMMERCIAL ♦ INDUSTRIAL

Christchurch Street West, Frome BA11 1EB

TEL: 01373 463866 MOBILE: 07887 953014

www.allsopcarpets.co.uk

KEYVOLUTION

Locksmith and
Carpentry Services
serving the Wiltshire Area

Warminster based company offering locksmith and carpentry.
Police cleared, reliable and honest service.
Any other quote beaten.

- BS3621 lock upgrades for house insurance approval
- Garage doors, locks and running gear
- Lock repairs – specialising in Chubb mortice locks
- Upvc double-glazed door and window locks fitted – even old ones!
- Door or window locks opened destructively or non-destructively (indemnity required for these services)
- Digital code locks supplied and fitted
- All types of carpentry work – mostly 2nd fix and maintenance

Check out my website

www.keyvolution.co.uk

or call Ben on **07748 214799** or **01985 219799**



White Horse Windows

Windows, Doors, Conservatories and
more...

Local Company, Exceptional Standards
10 year guarantee

Windows Fascia & Guttering
Doors Conservatories

CERTASS Registered

For a Free Quotation call Ryan on
07909 441442 or 01373 302594



Acer Tree Surgeons Ltd are Wiltshire based, and approved by the Arboricultural Association. Our team are all NPTC qualified and first aid trained and proof of insurance is sent out with every quote

Tree removal – dismantling and felling

Crown reductions, re-shaping and pruning

Hedge cutting

Stump grinding

Qualified surveys and management of trees

Free no-obligation quotations and health check

Contact Nick or Roy on 07590 986261 or 01373 832026

royderham@acertreesurgeons.co.uk

www.acertreesurgeons.co.uk

The Old Post Office, 85 High Street, Chapmanslade, BA13 4AN



BARTERS PLANT CENTRE

'Passionate about Plants'

Shrubs ♦ Perennials ♦ Trees ♦ Roses ♦ Conifers
Climbers ♦ Fruit Trees ♦ Hedging ♦ Soft Fruit ♦ Seeds
Bulbs ♦ Basket Plants ♦ Bedding ♦ Vegetable Plants
Christmas Trees ♦ Holly Wreaths
National Garden Gift Tokens

Opening Hours

Mon to Sat 9 - 5 (March to October)
Mon to Sat 9 - 4.30 (November to February)
Sun 10 - 4 (March to June + December)

Just off A36 in Chapmanslade, Wilts, BA13 4AL
01373 832694 www.barters.co.uk



Home Improvements

For all your home requirements

Tiling, decorating, garden fencing, pointing, plumbing,
heating systems, flooring, DIY projects, lighting.

www.homeimprovs.com

07949145960

Postlebury News

R Gould – Newsagent

All papers and magazines
Home delivery service

01749 850556

07979 452677



15%
Minimum
Savings

Garston
Veterinary Group

Spread the cost of your
pet's preventative
healthcare into affordable
monthly payments



Our Wellness Plan has been specifically designed so that your pet receives all of the essential vaccinations and parasite treatments and also a whole range of additional benefits to help ensure that they remain in the best possible health.

Cats £10.30
per month

Dogs from £12.50
per month *

*please contact one of the surgeons for specific prices for your dog. Prices are based on adult weight.

wellness@garstonvets.co.uk

Frome 01373 452225 Melksham 01225 617779 Trowbridge 01225 754021 Warminster 01985 213350 Westbury 01373 301448



www.garstonvets.co.uk



Painting and Decorating

High quality, clean work

Contact Steve Clarkson
07816 924357



Domestic Appliance Sales and Repair Service

Domesticare

21 Keyford, Frome

www.domesticarefrome.co.uk



01373 467351

Corsley Parish Council

Parish Council Briefing

Chairman, Neil Britten, rounds up the PC's activity in October

There were no meetings in October – the only activities were ongoing discussions with Wiltshire Highways on the two major road safety projects and attendance at a briefing at Corsley House on a major new project, which is explained in more detail below.

The detail of the Corsley Heath road improvements is not likely to mature until later in November and the PC anticipates a fuller briefing at the December quarterly meeting.

Corsley House

Together with their contractors, the Lutine Group, the owners of Corsley House have, in consultation with Wiltshire Council, prepared plans to create a bund on the southern boundary of their property alongside the A362 eastwards from Deep Lane, as a noise attenuation feature. They held a briefing meeting recently to display the plans and to offer liaison with the village during the scheme's development. The meeting was attended by those local residents likely to be most affected and three PC members.

The planning application has not yet been registered, but Lutine presented summary of the documents prepared and computer generated images of the appearance of the bund. From the pictures it appeared to blend in well with its environs and presented no detriment to the visibility on the A362

The major impact is likely to be the construction phase when 88,678 tonnes of

earth has to be transported to the site by road and gain access Corsley House grounds. The current plan is to bring the lorries in from the east and turn right into Deep Lane across the eastbound traffic flow. This direction has been chosen so as to minimise the overall impact to the village and it is anticipated that the transport of earth will require some months of heavy lorry traffic, at 15 minute intervals, weekdays from 8 am to 5 pm, entering and leaving the site.

In past similar projects, Lutine has offered to host public liaison meetings to understand and respond to local concerns, but the PC's initial view was that it should be sufficient to arrange a 'public' consultation period before the PC meeting at which the planning application will be discussed (date as yet unknown). Lutine offered to attend such a pre-meeting session, with the display material used at the Corsley House briefing. Unfortunately, unless the planning application and response deadline fits the normal meeting cycle, i.e. the next scheduled full meeting on 2nd December, then the notice of such a meeting could be quite short, but it would be helpful to hear any public views or desires for additional briefing.

Hedges

To repeat this part of last month's brief, this is the time of year when the PC receives most complaints about overhanging hedges and low hanging tree branches. Although I am sure that most already know, just a brief reminder

that it is the responsibility of landowners to ensure that hedges are cut to ensure that no obstruction is caused by overhanging foliage. **This applies to residential and agricultural landowners.**

Len White Charity Fund

In the October brief the PC's (Charity Trustees) plans to consider winding up this fund were publicised. Unfortunately, the editor

forgot to include the article – it now appears on page 34 and on the website.

Dates of next meetings

Quarterly Meeting 7.30 pm, 2nd December

Neil Britten

Chairman

pc.corsleynb@gmail.com

01373 832515/07810 764714



**Community
Craft, Cake and Chat
Afternoon**

Last month 21 people came to Chapmanslade village hall to enjoy an afternoon of Craft, Cake and Chat and many of you brought your own crafts to share and demonstrate to others

We are holding our second Craft, Cake and Chat afternoon from
2 to 4pm on Thursday 14th November
This time the theme will be Christmas

If you would like to come and make some cards, beautiful tree decorations or try your hand at decoupage, we have the experts on hand to help you.

All materials provided or bring your own crafts along - knitting, needlework, etc., and chat to friends over tea and cakes

Hosted by Corsley and Chapmanslade Churches.
Lifts are available on request.

For more details contact Gay Maynard 832490 or Di Britten 832515

Heytesbury Deanery/Maridi Diocese Link Group

Supporting Sudan

Rev'd Gay Maynard reports on a recent fundraising quiz night

Maridi is in the South West of South Sudan and shares a border with the Democratic Republic of Congo. We have been partnering with the Episcopal Church there since 2009 when the Bishop of Salisbury allocated them to us. Some of you will have met Bishop Moses when he spent a week with us earlier in the year.

On Friday 11th October the Deanery Link Group (Jane Shaw, Eva Burton, Meg Oliver, Anne Thompson and Gay Maynard) held their annual Quiz in support of the Chaima Christian Institute, which is in Maridi Town. Around 50 people from across the Deanery sat down to a fun evening with quizmasters Bob and Bob and also enjoyed a hot supper of cottage pie and veg followed by fruit crumble and custard. The evening

was a great success and we raised in excess of £650 – thank you to all who supported us, it makes the hard work of organising and delivering so worthwhile. This amount of money can make a big difference and will go towards sponsoring more students at Chaima. Because of many years of civil war, education generally has not been available, especially for girls, who are still expected to stay at home and help with the chores.

Watch out for the information board which will be in St Margaret's Church for a little while and then hopefully one or two of our other churches in the Benefice will also have it on display.

*Thank you again
Rev'd Gay Maynard*

Campanology News

By the time you read this I will know if I succeeded in the attempted Peal on 25th October and will let you know the outcome next month.

Last November on the 100th anniversary of the signing of the Armistice, as we only had five bells we were unable to ring a quarter peal in honour and remembrance of those from our villages who were killed in the First World War. This year, after the Remembrance Service on the 10th

November we will attempt to do just that at 12 noon. We are practicing hard in preparation.

On a general note we are also practicing so that we can enter a band in the Devizes Branch Six Bell Stiking competition and also the Novice Rounds competition both of which will be held in March next year at our tower.

*Marion Moldon
01373 832672*

**Rock n Roll
Party
With
The
Cleyhill Stompers
Saturday 9th Nov
The**

**3 HorseShoes
In The Slade
Kicking Off At 9pm
Raising Funds For
The Fantastic
Help For Heroes
www.CleyhillStompers.co.uk**



CHARITY NO
1120920

IN SUPPORT OF
**HELP for
HEROES**



THE CLEYHILL STOMPERS

Little Cuckoo's Pre-School

Lyes Green, Corsley, BA12 7QH

Friendly, dedicated pre-school in the heart of the countryside for children aged 2-5 years

Monday, Wednesday, Thursday and Friday
9 am - 3 pm during term-times

We accept 2-year-old funding in accordance with Wiltshire Council guidelines

Mother and Toddler group Tuesday mornings
10 am - 11.30 am during term-times



SESSIONS AVAILABLE NOW

Speak to Hayley McMahon
Pre-School Manager on 01373 832298

Find us on facebook or visit www.littlecuckoos.co.uk

A free trial session is available

Registered Charity Number 1064800

Corsley Tennis Club



New members welcome –
all ages, all abilities

Three hard courts available all year

Weekly junior coaching available
Low subscriptions

www.corsley-tennis.uk



CHRIS SEVIOUR
Building Services

07894 708949

cmseviour@gmail.com

Roofing, Loft conversions,
Extensions, Plastering,
Natural stonework

Cross Keys

Community Free House

Lyes Green, Corsley, BA12 7PB

Monday

12 noon to 3pm and 6pm to 11pm
Food served 12 noon –to 3pm and
6pm to 9pm

Tuesday

6pm to 11pm
No food

**Wednesday, Thursday,
Friday and Saturday**

12 noon to 3pm and 6pm to 11pm
Food served 12 noon to 3pm and
6pm to 9pm

Sunday

12 noon to 8.30pm
Food served 12 noon to 4pm

01373 832406

www.crosskeyscorsley.co.uk

Facebook @CrossKeysInnCorsley

NOTEBOOKS²GO

**Laptop / PC / Tablet / Phone / Apple
Repairs / Upgrades / Accessories**

We can repair all of your

Apple Devices!



Tablet & Smartphone Repairs

"Affordable Reliable Service"



Screens - Charge Port - Camera - Battery - Headphone Jack & More

Computer Repair

any brand, any problem



DELL TOSHIBA hp acer Gateway ASUS SONY VAIO SAMSUNG

51 Haynes Road, Westbury, Wiltshire, BA11 3HD

Tel - 01373 865400 / Email - support@notebooks2go.co.uk

Seven Open Doors

Dear Friends,

Well here we are in November and almost the end of the church's year which ends with Feast of Christ the King on the 24th. Then we begin again with Advent Sunday and the season of Advent, which is my very favourite season in the church's calendar. But before we look forward we must look back; the most important event we hold in church this month is the Service of Remembrance, always a very moving occasion.

I remember the first Remembrance service I took in the benefice at Kingston Deverill and feeling somewhat overwhelmed by the plethora of medals emblazoned on so many chests. In fact anticipating my trepidation on being faced with all this, one very kind and sensitive churchwarden took me to one side to reassure me that there was no need to feel intimidated. Of course after 5 years I have got to know the owners of these splendidly appparelled chests, which helps a lot, but I still feel humbled and privileged to be conducting a service where a very high percentage of the congregation have experience of active service in the military.

The Remembrance service is of course a public ritual to facilitate a national day of collective remembering, but each of us has our own bank of private memories that are filed away in the recesses of our brains. Events that happened years and years ago and which are buried deep in our unconscious minds can suddenly rise to the surface with the right trigger. I experienced this very recently myself when my father died and memories of my childhood flooded back, including a memory of being taken to a café and my father letting me eat the sugar lumps! It's no wonder I have so many fillings!

But what about when our memory starts to fail, or is sabotaged by illness or accident? What about when we cannot even remember who we are? I think about these things every time I visit an elderly person with dementia or take communion to the residents at Longbridge Deverill Nursing Home. It can be heart breaking to see people so diminished by disease is this way but I find the Christian understanding of who we are and how we are each individually known and loved by God incredibly powerful in these circumstances.

The psalmist says:

For it was you who formed my inward parts; you knit me together in my mother's womb.

I praise you, for I am fearfully and wonderfully made,

My frame was not hidden from you, when I was being made in secret, intricately woven in the depths of the earth. Your eyes beheld my unformed substance.

In other words, God knows us and loves us even before we were born. He will never forget us or leave us; even when we have forgotten who we are, he knows and loves us still, we are precious in his sight.

In this season of remembrance may God's love surround you.

Love and prayers,
Pauline

November Church Diary

Sunday 3rd November: All Saints Day and All Souls

8 am at St Mary The Virgin, Kingston Deverill: Holy Communion (BCP)

9.30am at St Margaret of Antioch, Corsley: Eucharist

10.30 am at St Peter and St Paul, Longbridge Deverill: Eucharist

4 pm at St Philip and St James: All Souls service



Tuesday 5th November

7.30 pm at The Anchorage: After Alpha Group



Wednesday 6th November

7.30 pm at 28 Huntenhull Lane: Parochial Church Council



Sunday 10th November: Remembrance Day

10.55 am at St Philip & St James, Chapmanslade: Remembrance Service

10.55 am at St Mary the Virgin, Kingston Deverill: Remembrance Service

10.50 am at St Margaret of Antioch, Corsley: Remembrance Day Service

10.55 am at St John the Baptist, Horningsham: Remembrance Day Service



Monday 11th November

10.30 am at 9 Cleyhill Gardens: Time to Think group



Thursday 14th November

2 pm at Chapmanslade Village Hall: Community Craft Cake and Chat



Sunday 17th November: Second Sunday before Advent

10.30 am at St Margaret of Antioch, Corsley: Family Worship

10.30 am at St Michael the Archangel, Brixton Deverill: Eucharist

Tuesday 19th November

7.30 pm at 93 Lyes Green: After Alpha Group

Thursday 21st November

10 am at The Three Horseshoes: Community Coffee Morning



Sunday 24th November: Christ the King

9.30 am at St Philip & St James', Chapmanslade: Eucharist

10.30 am at St Peter and St Paul's, Longbridge Deverill: Eucharist



Monday 25th November

10.30 am at 9 Cleyhill Gardens: Time to Think group



Wednesday 27th November

12.30 pm at Corsley Reading Room: Lite Bites Soup Lunch



Saturday 30th November

Christmas Coffee Morning: Stable Cottage, Huntenhull Lane, Chapmanslade



Sunday 1st December: Advent Sunday

8 am at St Mary The Virgin, Kingston Deverill: Holy Communion (BCP)

9.30am at St Margaret of Antioch, Corsley: Eucharist

10.30 am at St Peter and St Paul, Longbridge Deverill: Christingle and Posada

Community 'Craft Cake and Chat' afternoon

There was plenty of Craft, Cake and a great deal of Chat in Chapmanslade Village Hall last month at the first of our Community Craft, Cake and Chat afternoons. Over 20 of us gathered for a very sociable and enjoyable event doing a number of craft activities, including sewing, knitting, de coupage and making greetings cards. Board games were available, too, and there was plenty of opportunity to chat with old friends and to make new ones. Our next session will be on Thursday November 14th, and will have a Christmas theme.

Operation Christmas Child

Please return your filled shoeboxes to us at the services in St Margaret's on Sunday 3rd November or at St Philip and St James' the following Sunday. If you can't be with us on those days please contact us and we will arrange to collect your box from you.

Harvest Suppers and Harvest Services

Our Harvest Suppers in Chapmanslade and Corsley were a great success and enjoyed by all of us. Many thanks to everyone who attended and to all the volunteers who cooked excellent meals.

Fundraising

Our now traditional Christmas Coffee Morning will be held on Saturday 30th November at Stable Cottage, Huntenhull Lane, Chapmanslade from 10 30 am to 12 noon. There will be various stalls and produce as well as coffee and mince pies. The Christmas 50/50 Draw will also take place at this event. The winner of the September draw was Fraser Mills and Lionel Marsh was the winner in October. They each receive £100.

Welcome, Congratulations and Farewell

We congratulate John Hume and Joanna Rideout, who were married at St Margaret's on October 19th.

Parish Contacts for Corsley and Chapmanslade

Rural Dean and Rector	Rev Pauline Reid revpauline@btinternet.com	01985 841290
Associate Priest	Rev Gay Maynard revgmaynard@gmail.com	01373 832490
Lay Pastoral Assistants	Richard Dean Barbara Hughes Claire Tanner	01373 832594 01373 832273 01985 218099
Pastoral Visitor	Alan Hopkinson	01373 832393
Churchwardens		
St Philip & St James'	Ian Buick	01373 832318
St Margaret's	John Helliard	01373 832803
Deputy Churchwardens		
St Margaret's	Currently vacant	
St Mary's	Harcourt Gough	01373 832039
St Philip & St James'	Janet Aylesbury	01373 832752
PCC Secretary	Phil Jefferson	01373 832845
PCC Minute Secretary	Sue Fear	01373 832074

Copy for Seven Open Doors should be sent to Keith Muston at
themustons@btinternet.com subject 7ODs or phone 01373 832755.

If you would like to receive weekly news of Church events and activities, please send your email address to the above, with subject 'Through the Open Doors' or download a pdf from the 'churches' pages at www.corsleyandthebridge.co.uk

Expert repairs for
PCs & Laptops
Macs
iPads
Tablets


Frometech

Tuition available
Macs, PCs and iPads

Take the stress out of IT
Call Today!

Security Review of
your computer

01373 470170
www.frometech.co.uk



Cottage Bed and Breakfast



Chapmanslade

One double & one twin/
double bedroom
large private bathroom

Contact Caroline on
07715 983310
candyfarm49@yahoo.co.uk

Ski Apartment – French Alps

Ski in/ski out – sleeps 6

Well equipped – immaculate condition

For more information or to book online visit:

w. www.ski-les-cimes.co.uk

f. facebook.com/ski.les.cimes

e. lesleygolledge@gmail.com

t. 01373 832533

npv plumbing & heating

Installation • Servicing • Repairs

Bathroom and tiling specialists

All plumbing and heating work undertaken

Our fully qualified plumbers offer all general
plumbing services from boilers to bathrooms.
We will gladly advise clients on the most suitable
products for their property – be it heating
systems, boilers, radiators, bathrooms or showers.

07738 940355

www.plumbersfrome.co.uk

Hypnotherapy

If you need help with:

Anxiety
Depression
Phobias (such as flying or spiders)
Panic attacks
Relaxation
Weight management
Smoking cessation
Natural childbirth
Confidence
Public speaking
Exam nerves
and much, much more...

Call ANJI HOLLAND on
07944 647 978 / 01373 832 898
to enquire or just for a chat

www.hollandhypnotherapy.com

With practices in Chapmanslade and Bath

I am a member of the National Council for Hypnotherapists
and am bound by their code of practice and ethics

Corsley WI

October news

Alice Helliard rounds up the October meeting and announces some forthcoming events



You didn't need to be a literary critic, avid reader or even a member of a book club (which I've always believed to be an excuse for a glass of wine and a gossip) to appreciate our October's speaker. Barry Edwards is a retired English Teacher and Head Master of a number of schools in the South West but more relevant to the evening, he is extremely knowledgeable about Penguin books and their history, and has an amazing collection.

The Penguin empire began in the 1930's by the now Sir Alan Lane, who came from a well renowned publishing family based in Bristol. On a train trip to see Agatha Christie in Devon he found that there was no 'affordable' reading material at the stations to read on a long journey. So, he set about developing a good quality soft back book. The Penguin logo idea came from Sir Alan Lane's secretary who apparently described the bird as dignified and flippanant, much like her boss! Anyway, on the 1st of May 1935 10 titles were released at sixpence a book and over 3 million paperbacks were sold in the first 12 months.

The first books were colour coded blue for biographies, orange for general fiction, green for mystery and crime, cerise for travel and adventure, yellow for puzzles and poetry, grey for politics, red for drama and purple for philosophy.

During the war the number of books produced diminished as well as paper supplies and quality, hence books of this era are

looking a little battered these days. However, Sir Alan Lane insisted that all books of this time had a request at the back of the book to pass the book on to the armed forces after it had been read.

Various points of sale were secured including deals with Woolworths and at Railway Stations as well as a 'Penguinincubator' being designed as a vending machine for the books (much like the chocolate and drinks vending machines we see today)!

The most popular Penguin book is probably 'Lady Chatterley's Lover' which sold over 3.3million copies in a year and the most valuable is probably 'Biggles Flies Again' which has been known to make £700, having cost sixpence to purchase originally!

The competition for an old book was won by Annie for a family Atlas, second was Caroline and third me with a book of my grandfathers.

The next meeting is Cheese and Wine tasting at 7.30pm on 14th November. We need to know numbers so if you fancy joining us please let me know (Alice 07989339632).

The Corsley WI also have skittles, scrabble, bridge and lunch clubs which are also open to non- members. There are also a large number of County and National trips, workshops and other activities that members can join in with.

For more information please do not hesitate to contact Judith Helliard on 01373 832803.

Alice Helliard

✪ CORSELY FESTIVAL CHOIR ✪ *Christmas Concert*

Conductor: Edward-Rhys Harry

Corsley Festival Orchestra Quartet - Organist: Daniel Cushing



Haydn - Te Deum Pergolesi - Magnificat
Vivaldi - Gloria

Sun 8th December 2019

7.00 pm at St Margaret's Church, Corsley BA12 7QE

Tickets: £12.50

Disabled Access

Children: £ 5

from choir members and by phone : 01985 841624



Supporting
**British Heart
Foundation**

Chapmanslade Motor Services

**Vehicle repair
and servicing**

**Brake
specialist**

**MOT preparation
and repairs**



**Batteries
Exhausts
Tyres**



Quality service at competitive rates

FREE ~ wheel balancing and tracking with new tyres

FREE ~ courtesy car

Electronic diagnostics available – most makes covered

Green Farm Industrial Estate, Chapmanslade

01373 832188 or 07711 256927





**01373
455911**

CLEANING & MAINTENANCE 2000 LTD

OUR SERVICES INCLUDE

- Domestic Cleaning
- Commercial Cleaning
- Upholstery Cleaning
 - Carpet Cleaning
- One off Spring Cleans
- Garden Maintenance
 - Home & Garden Clearance

 www.busybees2000.co.uk 
info@busybees2000.co.uk

**JOHN E S JONES
& SON LTD**

**GENERAL
BUILDER**



Carpentry, painting and
decorating, extensions, uPVC,
facias and gutters, fencing,
decking and patios

Please call

01373 832600

07795 177920

07810 646335

Chapmanslade and Corsley Churches

Please come to our

Christmas Coffee Morning

Saturday 30th November

10am-Noon

Stable Cottage
Huntenhull Lane
Chapmanslade

Christmas Stalls include:

Candles and gifts
Woodcraft
Cards
Bring and Buy
Tombola
50/50 Club Draw

Admission £3 to include Coffee/Tea and
Mince Pie/ Sausage Roll

TEA & sympathy

Considerate catering at a difficult time

All our food is homemade, we provide delicious teas, sandwiches and cakes through to more elaborate options.

We offer a truly bespoke, caring and professional service.



Telephone Kim Clark on 01373 832151 or 07843 056916

e-mail kim@teaandsympathy.uk.com

www.teaandsympathy.uk.com

CHANTRY CONSTRUCTION

stone walling • patios

drives • extensions

prompt reliable service

mini digger and driver for hire

01373 836787 07855 343388

COMPUTER & LAPTOP REPAIRS
UPGRADES / SYSTEMS & LAPTOPS

VIRUS REMOVAL / BROADBAND

WIRELESS / NETWORKING



FAST, FRIENDLY, PROFESSIONAL SERVICE

COMPETITIVE RATES

ONSITE OR WORKSHOP

CCO CompTIA
Authorized Reseller

call
01373 302901

www.ntscomputing.co.uk

help@ntscomputing.co.uk

LAPTOP REPAIRS

We also replace
laptop screens,
keyboards,
CD-DVD drives,
fix overheating
and more

Forget-me-not 

• GARDENING SERVICE •

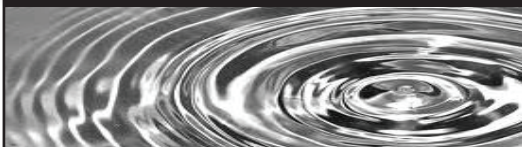


Weeding, pruning, planting,
fence painting, etc

01373 464416

07890 850465

Do you need a
plumber? Call...



Paul Antell Plumbing

07890 366832

01373 467427

Professional, reliable, friendly and local

paulantellplumbing@talktalk.net

www.paulantellplumbing.co.uk

Seasoned logs

Free local delivery within
15 mile radius of Frome

Hard wood • soft wood • mixed loads

All our timber is ethically sourced from
local woodlands within the Frome area.

Logs can be cut to any size required.

We also provide a stacking service if
required

Standard load of hardwood logs
£120 for 1.6 m³

Standard load of mixed logs
£110 for 1.6 m³

Standard load of softwood logs
£100 for 1.6 m³

Logs 6" and smaller
+ £10 for load

We are also able to supply barn dried logs
+ £20 per load

Please call or text Garry
07801 179917

Qualified & Experienced Counsellor

Lisa Adams Dip.Couns. Reg.BPC

Weekly sessions offered for adults on an
open-ended or short-term basis according
to individual requirements

Tel: 07904 843122

email: lisaadams.corsley@gmail.com

Pilates classes @ Chapmanslade Village Hall
Every wednesday, suitable for all levels.
9:15-10:15 & 17:50-18:50.

1-2-1 sessions and Personal
training also available.

Call Emma on 07788562891 or
email littlemisspilates@gmail.com



LITTLE MISS PILATES

James, Rob and Adam, former employees of Roger Patch Ltd are pleased to introduce...

CMP Complete Ltd General Builders

19 Swaledale Road, Warminster, BA12 8FH

James 07801 868288

Rob 07766 905131

email cmpcompleteltd@gmail.com

HETAS registered to fit woodburners

Chapmanslade Parish Council

Parish Council Briefing

Phil Jefferson reports on the meetings held on 19th September and 10th October

Twenty members of the public attended the September meeting and seven attended the October meeting, both of which were chaired by John Lewis, our vice-chairman.

September meeting

Barters Farm development

Hugo Haig, Managing Director of Lochailort, the company developing the site for housing, had been expected to attend the meeting but had offered his apologies. Councillors expressed the hope that a representative from Lochailort would attend the next meeting.

In both the open and closed sessions of the meeting there was much discussion about access to the site by construction traffic. At the time of the planning application the parish council had requested that access should be via the Nursery entrance and not via Cley Hill Gardens. It had been the council's understanding that this would be the case but the recently issued Site Allocation Plan giving details of how the construction work will be carried out had indicated quite clearly that access would be via Cley Hill Gardens. We undertook to seek clarification about this from the planning authority.

Information about the funding to be received by the parish council via the Community Infrastructure Levy (CIL) as a consequence of the development was given by our clerk. The funding will come in tranches, starting sixty days after the development commences. We learnt that occupancy of the land would take place on 1st October.

Planning Application 19/07948/FUL. Ganders Heath, Farm Lane. Change of Use of Agricultural Building to Live/Work unit and Change of Use of the Potting Shed to Tourist Accommodation (retrospective)

This matter, too, was discussed fully in both parts of the meeting. We decided to object strongly to the application for a number of reasons:- the site is outside the Village Building line, meaning that the development would conflict with local and national planning policy; the application is in breach of the original application made in 2011 which was for agricultural and equestrian and not residential use; there is no justification for a live/work unit in respect of an apiary; access is through a private, narrow, road where use is restricted to agricultural and equestrian purposes and parking is limited; alterations to the original potting shed and stables appear to have been made, adapting them for residential use without planning consent being sought. We urged the planning authority not to grant retrospective consent. Instead they should use their enforcement powers to remove the changes to the site introduced since the 2011 planning consent.

Highways

We noted that the A3098 in the vicinity of the bridge was due to be closed from 4th to 7th October; we understand that the surface on the bridge itself is subject to ponding and this is in need of rectifying. The white lines along the High Street have now been refreshed.

Resurfacing of the A3098 from the county boundary to the bridge is in the highway authority's draft maintenance programme for 2020/21; we hope that the work will be carried out as the surface is currently in a poor state. Our parish council and Corsley Parish Council have expressed concern about the amount of straw littering the road linking the two parishes and the possible effect this might have on drainage. We agreed that a message should be placed on the village website to make local farmers aware.

Community Police Support Officers (PCSOs)

We learnt that Debbie Robbins, one of our two PCSOs has been transferred to another team and will not be replaced. Our one remaining PCSO, Candy Jackson, now covers the whole of the Warminster Rural area. Debbie has served our parish well and she will be sadly missed.

**October meeting
Barbers Farm**

Representatives from Lochailort had again offered their apologies, stating that they hoped to attend the November meeting. We had further discussion about access to the site for construction traffic, including the concern that lorries might approach the site via the High Street rather than via the A36. We agreed to write to the planning authority and the developers seeking assurances about these matters.

**Planning application 19/08283/FUL.
Highcroft, 133 High Street**

Erection of a single storey extension to the rear of the house and insertion of two rooflights into existing outbuilding.

Discussion on this application had been held over from the previous meeting because of difficulties experienced in accessing the planning authority's website. We noted that none of the local residents had lodged

objections and as the development would not be visible from the High Street we raised no objection.

Highways

The closure of the A3098 planned for 4th to 7th October had not gone ahead. The highways authority has not offered any explanation for this but they have informed the parish council that the closure will now be on 15th, 18th and 19th November (i.e. not including the weekend) between the hours of 7 am and 7 pm.

Remembrance Day

We were informed that the Remembrance Day service on November 10th will, as last year, be held at the war memorial. It will be a short service, commencing at 10.55 and it is hoped that it will be well-attended by parish residents.

Next meeting

Our next meeting will be in the Village Hall on **Thursday 14th November**, starting at **7.30 pm**. We hope that a representative of Lochailort will be present this time. Adam Gough, from the company about to build holiday chalets at Thoulstone, has accepted an invitation to attend and will brief us on progress.

Traditional
Mole Catcher

07512 681111
01373 836350

The future of the...

Len White Charity

The Trustees of the Len White Charity, Corsley Parish Councillors, give public notice that consideration is being given to winding up this charity in accordance with its Trust Deed

The Trustees seek final bids for grants by 31 December 2019 and feedback on their intentions for the residual capital of the Fund.

Purpose of the charity

The t Charity was set up in 1991 by Corsley Parish Council in memory of Len White, a well known and respected resident of the Village. The parish councillors are the trustees and the objects of the charity are:

“(a) To pay the income from the charity fund for the benefit of the pupils of Corsley School, in such manner as the Corsley Parish Council think fit or

(b) If Corsley Primary School closes then for the benefit of the children living in Corsley between the ages of five and eleven years for educational purposes as the full Corsley Parish Council shall think fit.”

Financial position

The funds of the Charity are now such that no meaningful income is achievable on the remaining capital and the residue of the accrued income is now at such a low level that only one or two low value grants could be considered. After any final grants, there would be around £1,000 capital remaining.

Terms of the Trust

The trust deed, in the event of ‘failure of the trust’, allows the assets of the trust to be given to “...such other charitable institution or institutions having similar objectives to those

of the charity as the trustees shall decide.” The trustees believe that exhaustion of the funds available for distribution is tantamount to ‘failure’ and that options for distribution of the remaining capital should be considered.

Options

The Trustees have been unable to identify any ‘institutions having similar objectives’ with the restrictive direct requirement to serve only the children of Corsley. Instead, consideration has been given to using the remaining capital to assist the funding of a project in Corsley which would serve the needs of children and also provide a lasting memorial to Len White and those who donated to the Fund in 1991. To date, the project which has met with most favour is replacement of the Heath bus stop shelter, which is in poor repair. This would provide long term benefit to Corsley children who use the public bus service and a suitable location for a memorial plaque.

Consultation

The Trustees have consulted the Charity Commission and Len White’s family. The Charity Commission are content for the trustees to make their judgement in accordance with the deed provided that they have taken appropriate steps to ensure that suitable advertising has identified no further beneficiaries. The family (Mrs Ruth Bowers) have concurred with the proposal to use the

remaining capital as indicated above. This notice is intended to fulfill the requirement for 'suitable advertising'.

Way forward

Comments are invited on the above proposals and any bids for grants in accordance with the Charity Deeds, by 31st December this year. A further notice will be placed in the December edition of The Bridge.

Neil Britten

Chairman, Corsley Parish Council/

Len White Trustees

pc.corsleynb@gmail.com

01373 832515 or 07810 764714

For up-to-date information such as occasional parish council meetings, church services, previous editions of The Bridge, local clubs and activities, business listings, and other useful information, please visit

www.corsleyandthebridge.co.uk

Want something added? Just email the Editor with your request!

Chapmanslade Village Hall

Fun Quiz

Come and have an enjoyable evening

**Saturday 23rd November
7 for 7.30pm start**

Licensed Bar · Hot supper

Tickets **£10**

From Denise 01373 832485
dandcpage74@gmail.com
or Ken 01373 832034

Please purchase tickets in advance to reserve your supper!

Proceeds to Chapmanslade Hall Improvement Fund

Corsley Reading Room

Future in the balance?

Lots of money needs to be spent on a new roof -
do you think it's worth it?

All villagers welcome to come along and have their say

Annual General Meeting

7.45pm, Wednesday 6th November

Corsley Reading Room

Bar open 7.30pm

Piano Lessons

All standards welcome

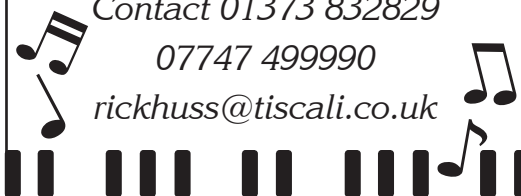
Debbie Rickhuss

Teacher of Pianoforte and Theory

Contact 01373 832829

07747 499990

rickhuss@tiscali.co.uk



M W Garden Services

20+ years experience

A tailor made service for all types of garden maintenance

Insured and CBI's checked

mark22.weaver@mypostoffice.co.uk

Telephone 01373 832854

Mobile 07921 818452

Dashing Dusters

- Cleaning and ironing to a high standard
- General domestic assistance
- Commercial cleaning
- Reliable
- Reasonable rates
- References available

01373 832484 (evenings)

JERRY RAYNER :
boiler maintenance :

01985 841461 or 07775 755981

FOR SERVICING AND BREAKDOWN
OF OIL BOILERS

also AGA and RAYBURN

- Competitive rates
- Friendly, helpful and efficient
- Call now for a quote

Wren House

Residence for the retired and elderly

Wren House in Warminster is a long-established, elegant retirement home, specialising in individual care in gracious surroundings. Having just thirteen rooms, each with a private bathroom, we are able to offer the ambience of a family home, together with caring staff and the facilities to enable our residents to enjoy their later years with dignity.

Wren House serves fresh, locally-sourced, home-cooked food. Residents enjoy a varied activity programme which includes a gardening club and our own choir.

Mrs Ellie Simmonds

Wren House Ltd, 32 Vicarage Street, Warminster, BA12 8JF

Telephone 01985 212578

wrenhousewarminster@hotmail.com

www.wrenhousewarminster.co.uk

Whitbourne Chapel

Thy Word is Truth - John 17.17

What's it like?!

How would you describe an aeroplane to someone who'd never seen one? Well, it flies like a bird but without flapping its wings, it often makes a loud roaring like a lion and it's a bit like a bus. We often use comparisons - like this or like that. Often there is only one point of likeness.

Now then, what's like a hammer, tastes sweeter than honey, is valuable like gold and sharper than a two edged sword? The Word of God, of course, according to the Bible.

(Psalm 19. 9-10, Jeremiah 23.29, Hebrews 4.12)

In the Queen's coronation service she was given a Bible and it was described as 'the most valuable thing this world affords'. Do we treasure it? How often do we read it?

Are you good at hammering in nails straight?! The Bible is very good at banging in points clearly. What about: "And thou shalt love the Lord thy God with all thy heart, and with all thy soul, and with all thy mind, and with all thy strength." *Mark 12.30*

If you are practised in using a weapon you can defend yourself and cope with dangerous situations. The Word of God is like a very sharp sword. Do we know it well enough to use it for defence and attack where necessary? Can you spot where it is being misused or distorted?

Is the Word of God sweet like honey? Is the gospel, God's good news, the most wonderful thing you know and experience? Is the grace of God, His gift of salvation, knowing the Lord Jesus, very, very sweet to us?

Our prayer should be that as we learn more of the written Word, we shall get to know Jesus better who is the living Word of God.

Roger Hopwood

Thinking of planes...

Do you know about the work of Mission Aviation Fellowship, MAF? Their local speaker, Mr Porter, will be leading our service on Sunday 1st December at 11am.

I receive MAF's quarterly magazine and their prayer diary. It's thrilling to read about the work of MAF's pilots, ground staff and office workers, and to read of the things MAF does, especially 'medivacs', air-lifting people to hospital, when going by road or by foot would take days across dangerous terrain.

Come along on 1st December and hear more about MAF's varied and essential work in some of the hardest-to-reach parts of our world - and about the staff they need to make this happen!

Gill Redman

01985 215062

paradiselost@btinternet.com

Regular times

Services every Sunday morning at 11.00 for about an hour (coffee served at 10.45)

Communion on the first Sunday of each month at 12 noon for 15 minutes

Bible study sessions as announced



COMPUTER PROBLEMS?

01373 812804

Email
Advice for new users
Anti-virus defence
Web sites
Custom programming

Networks - home & office
Home tuition
Web access
Privacy & security
Repairs

www.technojeeves.com

info@technojeeves.com



Local Electrician

All Domestic and Commercial Work Undertaken
Part "P" Registered NAPIT Approved "Full Scope" Installer
Fixed Wire Electrical Testing and Thermal Imaging Reports

Portable Appliance Testing

Aico Approved Installer for Fire detection

Service/Maintenance Contracts Available

Call us on:

01749 850769 or 07779 429786

Email: ian@fushi-electrical.co.uk

www.fushi-electrical.co.uk



E G MARTIN LTD Heating Oil Distributors

Telephone 01373 822784

Victory Road, West Wiltshire Trading Estate
Westbury, Wiltshire, BA13 4JL

WESTERN SKIP HIRE

Telephone 01373 813132

Victory Road, West Wiltshire Trading Estate
Westbury, Wiltshire, BA13 4JL



Windows, Doors & Conservatories

- Free quotes from our local experts
- Strengthen your home's security
- Reduce your heating bills
- Excellent offers

up to
45% OFF
selected
WINDOWS & DOORS

01985 215566
www.newwindowsltd.co.uk

**New
Windows**



Cinema Corsley

Thursday 21st November

All is True

Certificate 12A, 1 hour 41 mins



All Is True follows William Shakespeare into retirement after fire destroyed the Globe Theatre during the showing of Henry VIII, All Is True being the play's alternative title.

Having been a prolific writer and, as a result, neglected his family, re-establishing his position at home is far from easy.

Alongside delayed grieving for his son who died in childhood, Shakespeare faces resentment from his wife and daughters.

Written by Ben Elton, it is directed by its star, Kenneth Branagh, an actor well-suited to playing Shakespeare after a career in which the Bard has featured heavily. Having modelled his appearance on a well-known painting of the playwright, his prosthetic nose attracts as much comment among the film's reviews as his acting! Supported by Judi Dench as his wife, Anne Hathaway, and Ian McKellen, as the Earl of Southampton, outstanding performances are guaranteed with gentle humour throughout.

All Is True gained the most votes in our 'People's Choice'-style selection process for this month's film. Thank you to all who took part in the voting process. We will be offering the opportunity to vote again on future films at our cinema night in January.

Doors open 7pm for a 7.30pm start at Corsley Reading Room. Tickets £6 from Acres Supply (cash only) or on the door. Refreshments and a licensed bar.

There isn't a film night in December, so we'll be back in the New Year with this intriguing portrayal of man's struggle against nature and himself..

Thursday 16th January 2020

The Mercy

(Certificate 12A, running time 1 hr 52 mins)

A close second choice with our voters in September, The Mercy recounts the true story of an amateur sailor's quest to become the first man to circumnavigate the world solo in 1968. Always the outsider among the nine men entering the race, Colin Firth plays the leading role in the story of Donald Crowhurst's mysterious disappearance.



Your Local Electrical and Property Services

LAWRENCE FAIRFIELD

Limited

Professional, reliable & understanding with over 40 years experience

Call or email now for a free quote

01373 464577

enquiries@lawrencefairfield.co.uk

www.lawrencefairfield.co.uk



allsorts OF FENCING

Your local Fencing Specialist

Stock Wire / Post and Rail / Close board
Decking / Patios / Gates / Sheds / Pergola

www.allsortsoffencing.com

01373 832339 / 07710 180551

Also: Topping of Fields and Paddocks

RICHARD ROBBINS

City and Guilds Trained Gardener

All aspects of Garden work undertaken

07510 130083

Rose Knight

Dog and cat
minding service

01373 464904

07773 435254

knight_rosemary@sky.com



KB Landscape

30 years in landscaping

Phone

01373 832371

Mobile

07951 297173

Kevin Brixey - for quality and experience

5 Red Cottages Corsley Warminster Wiltshire BA12 7PS

Landscaping
Patios and paths
Turving and seeding
Brick and stone walling
Decking and pergolas
Block paving
Gravel drives
Pond work
Fencing

Paul Ledbury

Quality Painting and Decorating

30 years experience

**INTERIOR AND EXTERIOR
GENERAL MAINTENANCE**

5 Hampshire Gardens
Westbury, Wiltshire
BA13 3EX

**Telephone 01373 858163
Mobile 07976 242045**

ST DAVIDS WHITSAND BAY CORNWALL



Holiday Let
Sleeps up to 8
01373 464870

www.stdavidswhitsand.co.uk

Local Carpenter/Handyman
(Retired cabinetmaker)

**Fitted wardrobes, cupboards
wood flooring, skirting boards**

07971 550050

cosí

MARISTOW STREET

**BREAKFAST
LUNCH
COFFEE & CREAM TEAS**

**NOW OPEN FRIDAY EVENINGS
FOR DINNER**



FIND US AT 16 MARISTOW STREET, WESTBURY, BA13 3DN
01373 827 162 | HELLO@WEARECOSI.COM
WWW.WEARECOSI.COM



C J Bath

**Garden & Property
Services**

01985 988308

07982 831082

A view from over the hedge...

Countryside Matters

As I write this on the 19th of October the sun is actually shining for the first time in three weeks

It has either been showers, rain or heavy rain every day since storms hit the UK on 23rd September, resulting in flooding in many parts of the country.

This weather has had a real effect on farm-work, with maize harvesting still waiting to start and the cows already indoors on winter rations. Although the maize is fit for harvesting, the ground conditions have been so poor that the harvester with tractors and trailers are unable to get into the fields without harming the soil structure and trailing soil all over the roads. Thankfully, there's a forecast for good weather for the next few days so we can only hope that harvesting can soon start.

With the sun shining we can also enjoy our surroundings – the woodlands look stunning in their autumn colours. The abundance of fruit, berries and nuts in the hedges and trees are helping keep the birds and wildlife in good condition for the coming winter.

With 5th November looming, can I please remind those enjoying the fireworks parties to

please consider pets and farm animals in your locality – especially dogs and horses. If you're thinking of enjoying some fireworks, perhaps you could let your neighbours know so they can keep their pets/animals indoors.

Please be aware that organised groups of licensed shotgun holders and dog handlers will be out shooting duck, pheasant and partridge in our countryside once or twice a week until the end of January (during daylight hours only). It is therefore wise to keep to the footpaths so your walk isn't disturbed. The illegal killing of deer and hare coursing either during daylight hours or at night is unacceptable and should be reported to the police. Please note that deer stalkers are probably legitimately out shooting but, anyone shooting from a moving vehicle is likely to be up to no good.

Let's hope that the weather over the coming months will allow us to get out and enjoy our glorious countryside.

Judith Helliar



Order now for Christmas

Farm fresh bronze turkeys and geese

Telephone 01373 832555

Corsley Reading Room

Your 'village hall'

Chairman, Hugh Deed, reports on the latest happenings at the hall

Coffee Morning

The November Coffee Morning is on 5th November – no fireworks! It is a great way to meet other villagers and catch up on the gossip. All welcome and coffee/tea is only £1. There is also the opportunity to ask Hugh any IT questions, bring along your tablet/laptop if you want.

Cinema Corsley

As many of you know we invited votes for our next film which is on 21st November and as a result it will be 'All is True'. See advert elsewhere in this edition of The Bridge for more details. The trailer can be viewed on the Reading Room website.

AGM

The Reading Room AGM is on 6th November at 7.45pm, doors open at 7.30pm. It is open to all Corsley residents. We would

welcome attendees with whom to discuss the future of the Reading Room as it will need significant investment over the coming years to remain open. It is important that residents are aware of and support the actions under consideration. The bar will be open!

Committee Membership

New members/trustees are always welcome, but we will not pressure you if you come to the AGM!

Bookings

Full details about the hall and its facilities including how to hire are on the website or call Gill Parkinson (01373 832322) to discuss. See website www.corsleyreadingroom.org.uk

Hugh Deed

Chairman of Management Committee

.....

**Run by the Corsley Reading Room
Management Committee**

Coffee Morning: *First Tuesday of the month
10 am - 12 noon*
Cinema Corsley: *21st November and 5th December*

.....

**Other regular events NOT organised by
the Management Committee**

Lite Bites Lunches: *see advert*
Yoga: *Tuesday and Wednesday evenings*
Pilates: *Tuesday afternoons*
WI: *second Thursday of the month*

.....

Chairman@corsleyreadingroom.org.uk or 01373 832897

Small ads

£1 for EACH item for sale or wanted (cash only please) - at one of the two drop-off locations)

Please note: no cash, no advert!

MISSING!

Percy Peacock – a lover of sunflower seeds, Percy was sighted in the Corsley Reading Room area in mid-October. If you have any information, please contact Liz **01373 832687**
07899 953957 or 07934 929744

WANTED

Help with local **secretarial tasks**. Need PC and be a car driver. Very few hours. Collection of mail and medicines then post out.
davwest47@hotmail.com

Answers to Bob's Bafflers

- 1 Saigon
- 2 Toad (Migratory toads crossing)
- 3 Chad and Togo
- 4 Serbian
- 5 Martin Chuzzlewit
- 6 Vladivostok
- 7 Mark Labbett (The Beast)
- 8 Cornflower
- 9 William Golding
- 10 Edward VI
- 11 Charles Schulz
- 12 "Don't tell him, Pike"

STORAGE/ WORKSHOPS

**Three barns available
to rent in Corsley**

Can be taken separately or
as a whole

43m²

61m²

67m²

Please call **07850 509236**
for more information

Local organisation adverts

£2 per month for a small boxed advert or £7.50 for a full page. Full page adverts are allocated depending on space available and cannot be guaranteed. All monies must be at one of the two drop-off locations (Bartons Plant Centre or Acres Supply Garden Centre) by **4pm** on the **19th** of the month. Please note: no cash, no advert!

Trade advertising

Annual trade advertisements (12 issues, when space is available)

1 space	(69mm wide x 33mm high)	£22.00
2 spaces	(69mm wide x 66mm high)	£42.00
3 spaces	(quarter page - 69mm wide x 100mm high)	£60.00
4 spaces	(138mm wide x 66mm high)	£75.00
6 spaces	(half page - 138mm wide x 100mm high)	£104.00

Trade advertisement material should be supplied in print-ready format,
to the chosen standard size and correct shape.

For trade advertising enquiries, please contact David James (Trade advert coordinator/Treasurer)
at either thebridge832@gmail.com or 01373 832443.

DRIVE IN AND PICK YOUR OWN FIREWOOD

Woodchip, Mulch
Hardwood Logs, Softwood Logs
Kindling, House Coal, Smokeless Coal
Delivery available



Mon to Fri: 7.30am - 4.15pm

Closed on Sundays & Bank Holidays

Open Saturdays from Sep-Mar only until 12 noon

01985 213507 www.longleat.co.uk/forestry

5% discount for tenants of Longleat Estate



**LONGLEAT
FORESTRY**

cloud
homecare

Quality care and
support in Warminster
and the surrounding
villages



We are a small, Corsley based care provider

**We provide care to people who need support
to remain living in their own home**

**Please telephone or email us, or visit our
website for further details**

Tel. 01373 832 597 enquiries@cloudhomecare.co.uk
www.cloudhomecare.co.uk

Autumn: the perfect time to lay a new lawn or repair an old one...



Lawn turf £3m²
Lawn seed
Lawn fertiliser
Spot weedkiller

01373 832591
www.acressupply.com
info@acressupply.com

*Your local, independent
garden and aquatic centre
Open 7 days a week*

Acres Supply
Corsley
BA12 7PP

DarlingInteriors

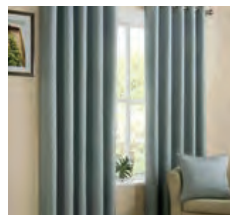
Made to Measure Curtains & Blinds - Bedspreads - Tracks & Poles - Fitting

Choosing new soft furnishings has never been simpler!

We bring an extensive range of exquisite fabrics from leading suppliers to choose from.

All types of blinds supplied & fitted motorized or hand operated.

For the finishing touch we can provide and fit beautifully crafted tracks and poles to complement any window including bays or curved.



Get in touch to arrange your FREE no obligation consultation!

t: 01373 672 359 e: info@darling-interiors.co.uk w: www.darling-interiors.co.uk