

# The Bridge

**November 2018**

*monthly magazine for the villages  
of Corsley and Chapmanslade*



*Remember the fallen on Armistice Day – join in the concert, plant a tree,  
buy the book and watch the films; stride out with the Chicken Chasers,  
make your Xmas wreath, attend some AGMs, there's lots to do in November...*



# Mendip Mowers

## Why Honda?

*There is a simple reason why you will see  
so many Honda products still hard at work  
after many years of service;  
they are built to last.*

## OFFERS AVAILABLE THROUGHOUT THE YEAR

- Mowers • Tillers • Brush cutters
- Blowers • Chainsaws
- Hedge trimmers

Barn Dried Logs Also Available



GARDEN MACHINERY SPECIALIST

SALES • SERVICE • PARTS

[www.mendipmowers.co.uk](http://www.mendipmowers.co.uk) 01373 832965

Unit 7, Green Farm Industrial Estate, Chapmanslade BA13 4JJ



# Frome Heating Specialists

## J L and M W Knight

### Heating and plumbing engineers specialising in:

Oil and gas boiler servicing

Boiler replacement

Energy management

Pressurised hot water systems

Underfloor heating systems

Frome family business established 1964

Stavanger, Corsley, Nr Warminster, Wiltshire, BA12 7QL

# Call 01373 832578



199876

# The Bridge

monthly magazine for the villages of Corsley and Chapmanslade

## Articles

Please submit articles either by email to [viv.thomas146@btinternet.com](mailto:viv.thomas146@btinternet.com) or by hand (legible handwriting please!) and take them to the drop-off locations at Barbers Plant Centre, Chapmanslade, or Acres Supply Garden Centre, Corsley by the deadline.

News, reports, updates, thank you's, etc, from individuals or local organisations are free – the more the merrier – keep 'em coming!

## File types

Save your files as .doc – please don't send .docx files – I can't always open them successfully.

## Advertising

**Small ads** are £1 for each item whether 'For Sale' or 'Wanted'.

**Events/local organisation ads** (churches, clubs, playgroups, etc) are £2 per month for a boxed advert.

**Full page ads** cost £7.50, are subject to space availability and cannot be guaranteed,

If you are advertising, don't forget to take the fee – cash or cheque in a sealed envelope please, to either of the drop-off points (Barbers Plant Centre or Acres Supply).

**Please note: no cash, no advert!**

## Trade advertising

Please see information on the last page.

## In this issue...

- 8 Bob's Bafflers**  
a cunning quiz
- 12 Science**  
biology: changing the world
- 16 Chapmanslade Speed Watch**  
top-up the traffic team
- Parish Council briefing**  
Corsley **18**
- Seven Open Doors**  
news from the pews **23**
- Corsley WI**  
news from the ladies **28**
- 38 Cinema Corsley**  
secret Spitfires
- 41 Whitbourne Chapel**  
chapel colloquy
- 46 Countryside matters**  
views from over the hedge

## Deadline

**Deadline for articles  
or adverts for the next  
issue of The Bridge is  
4pm 19th November**

**Please note that no  
items will be accepted  
after this date**

---

## November

### Tuesday 6th

Village Coffee Morning - 10 am - 12 noon,  
Corsley Reading Room

### Wednesday 7th

Chapmanslade Memorial Playing Field Action Group – 7.30 pm, Three Horseshoes,  
Chapmanslade (upstairs)

Corsley Reading Room Annual General Meeting – 7.45 pm, Corsley Reading Room

### Thursday 8th

Corsley WI - 'Making a Christmas Wreath', with help from Debbie Fraser – 7.30pm,  
Corsley Reading Room

### Friday 9th

'Lest We Forget' - WW1 Centenary Armistice Concert – 7.30 pm, St Margaret's Church,  
Corsley

### Sunday 11th Remembrance Day

Church Services – 10.50 am, St Margaret's Church, Corsley and St Philip and St James' Church, Chapmanslade. Followed by commemorative tree planting at the Memorial Playing Field followed by a 'Bring and Share' lunch at the Village Hall

### Thursday 15th

Church and Community Coffee Morning – 10 am - 12 noon, Three Horseshoes  
Chapmanslade

Cinema Corsley - compilation of British Pathé WW1 archives to commemorate the 100th year of the end of World War 1 – 7 for 7.30 pm, Corsley Reading Room

### Sunday 18th

Chapmanslade Chicken Chasers – 3-mile walk, meet at 3pm, Three Horseshoes,  
Chapmanslade

### Wednesday 21st

Parochial Church Council Meeting

### Thursday 22nd

Corsley Memorial Playing Field Annual General Meeting – 7.30 pm, Cross Keys back room  
Corsley Cricket Club Annual General Meeting – 8 pm, Cross Keys back room

### Saturday 24th

Fun Quiz – 7 for 7.30 pm start, Chapmanslade Village Hall

### Tuesday 27th

Christmas Shopping Trip to West Quay, Southampton (see page 29)



# Diary Dates

## **Wednesday 28th**

Corsley and Chapmanslade Churches Light Bites Soup Lunch – 12.30 pm - 2 pm, Corsley Reading Room

## **Tuesday 29th**

Corsley Show Annual General Meeting – 7.30 pm, Corsley Reading Room

## **December**

## **Saturday 1st**

Corsley and Chapmanslade Churches. Christmas Coffee Morning 10.30 – 12 noon Stable Cottage Chapmanslade

## **Monday 3rd**

Corsley Parish Council Quarterly Meeting – 7.30 pm, Corsley Reading Room

## **Tuesday 4th**

Village Coffee Morning - 10 am - 12 noon, Corsley Reading Room

## **Thursday 6th**

'A Christmas Carol' – 6.30 for 7.30 pm, St Margaret's Church, Corsley

## **Wednesday 12th**

Corsley and Chapmanslade Churches 12.30 pm – 2.00 pm Lite Bites Christmas Lunch  
Corsley Reading Room

## **Thursday 13th**

Corsley WI - Christmas Lunch for members – 12 noon, at the Royal Oak, Corsley

Cinema Corsley - 'Mama Mia - Here We Go Again' – 7 for 7.30 pm, Corsley Reading Room

## **Friday 14th**

Corsley and Chapmanslade Churches - Carols in The Barn – 6 pm, Manor Farm, Corsley

## **Monday 17th**

Corsley and Chapmanslade Churches - Carol Singing – 6 pm, Chapmanslade High Street

## **Thursday 20th**

Church and Community Coffee Morning – 10 am - 12 noon, Three Horseshoes  
Chapmanslade

**PLEASE NOTE THAT THE DEADLINE FOR SUBMISSIONS  
FOR THE JANUARY EDITION OF THE BRIDGE IS  
FRIDAY 7TH DECEMBER**

Chapmanslade Village Hall

# Fun Quiz

Come and have an  
enjoyable evening

**Saturday 24th November  
7 for 7.30pm start**

**Licensed Bar · Supper**

**Tickets £10**

**From Denise 01373 832485  
dandcpage74@gmail.com  
or Ken 01373 832034**

*Please purchase tickets in  
advance to reserve your supper!*

Proceeds to Chapmanslade Hall  
Improvement Fund

## Chapmanslade Memorial Playing Field

### Action Group

Following a gap over the Summer  
we have our next meeting to re-form  
Chapmanslade Memorial Playing Field  
on the 7th November at the Three  
Horseshoes pub 7.30pm upstairs.

We have our first pot of money and are  
now going to be looking at how we can  
make a start, not just in the play area but  
the whole space for all ages.

Be great to see some new faces!

Please feel free to contact me if you have  
any questions or ideas.

Charlene Ridler  
01373 832021

charlene\_searle@hotmail.com



## Corsley Show

### Annual General Meeting

**7.30pm, Thursday 29th November  
Corsley Reading Room (main hall)**

**All welcome!**

(Please note that only Members of the Society may vote)





# Pears Electricians

Nigel Charteris - BSc (Hons) M.I.E.T.



## Professional Local Electrician

A HIGH STANDARD OF WORK AT REASONABLE RATES

Part P registered with [www.napit.org.uk](http://www.napit.org.uk) - Testimonials and references available

**Faults & Troubleshooting • Repairs & Improvements**  
**Installation Condition Reports • Boiler Wiring**

[www.pearselectrical.co.uk](http://www.pearselectrical.co.uk)

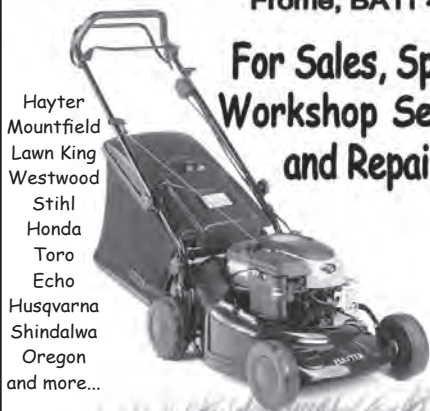
**01985 213314 or 07717 534026**



## OAKLEY

### GARDEN MACHINERY

Grove Lane, Marston Trading Estate  
 Frome, BA11 4AT



**For Sales, Spares,  
 Workshop Service  
 and Repairs**

Hayter  
 Mountfield  
 Lawn King  
 Westwood  
 Stihl  
 Honda  
 Toro  
 Echo  
 Husqvarna  
 Shindalwa  
 Oregon  
 and more...

[www.oakleyfrome.co.uk](http://www.oakleyfrome.co.uk)

**01373 467712**



## S B Services



Contact Sean

07828 671566

*For your garden maintenance  
 and home improvements*

## STUNNING COASTAL VIEWS ON CORNISH COAST NEAR LOOE



Six bedrooms (sleeps 12)  
 Private access onto beach  
 Pets allowed

Top class facilities including wi-fi  
 Rent for week or even long weekend  
 Downstairs bedroom and shower room

**For more info: Sandy Parrish 01373 832522**

## Bride by Design

**Bridal gowns and accessories**

2 Silver Street  
 Warminster, BA12 8PS



Please contact us to  
 arrange an appointment  
 t. 01985 217216

e. [info@BridebyDesign.biz](mailto:info@BridebyDesign.biz)  
[www.bridebydesign.biz](http://www.bridebydesign.biz)

# The **co-operative** funeralcare

- 24 hour service
- Free bereavement advice
- Pre-paid funeral plans

**WESTBURY** 48 Warminster Road, BA13 3PF  
**01373 858142**

**WARMINSTER** 3 George Street, BA12 8QA  
**01985 220105**

**FROME** 1 Nunney Rd, Frome BA11 4LA  
**01373 473426**



southern coop

## ORCHARD UPHOLSTERY

RE-UPHOLSTERY OF  
ANTIQUE AND MODERN  
FURNITURE

❖ FREE ESTIMATES ❖

COLLECTION AND  
DELIVERY SERVICE

Telephone Lesley  
01373 464870

## Sharon's Foot Clinic

SAC Dip FHPT SAC Dip FHPP



*Fully insured and highly trained*

For the professional treatment of:  
Corns · Callus · Cracked Heels  
Athletes Foot · Fungal Infections  
Thickened Nails · In-growing Nails  
Diabetic Foot Care · Verrucas  
Nail Cutting · Nail Reconstruction

Contact Sharon on  
**01373 836734 or 07728 200402**

Clinic appointments at  
**12 Sunny Hill, Nunney, BA11 4ND**

Home visits also available





# **'Lest We Forget'**

**To commemorate the 100<sup>th</sup>  
anniversary of  
Armistice Day ending WW1**

**An evening of music and songs from the  
period, poetry, a résumé of the war, film  
and a collection of local memorabilia**

**and**

**The launch of 'Lest we Forget', a story of  
life in Corsley and Chapmanslade during  
WW1 and the local men who lost their lives  
serving our country**

**7.30pm, Friday 9th November 2018  
St Margaret's Church, Corsley**

**Light refreshments and a bar will be available**

**Option to dress in keeping with the period**

**No admission fee but  
donations will be collected  
for the Royal British Legion**

**SparkleBox** © Copyright 2008, SparkleBox Teacher Resources ([www.sparklebox.co.uk](http://www.sparklebox.co.uk))

# Bob's bafflers

- 1 Who composed the Brandenburg Concertos?
- 2 What is the name of the author played by Angela Lansbury in the TV series 'Murder, She Wrote'?
- 3 If your occupation was listed as a saggar maker's bottom knocker, which industry would you be in?
- 4 In which English county would you find the town of Crewe?
- 5 A murmuration is a group of which birds?
- 6 Which word means the opposite of oriental?
- 7 Who became Prime Minister in 1976 after the surprise resignation of Harold Wilson?
- 8 What was the name of Sherlock Holmes' brother?
- 9 Name the farm used as a hideaway by the Great Train Robbers in 1963.
- 10 'Barwick Green' is the signature tune for which radio programme?
- 11 Accra is the capital of which country?
- 12 An aeroplane carrying 40 people crashed over the Atlantic Ocean; every single person perished in the accident, yet two passengers survived. How is this possible?

Answers on page 48

## Chapmanslade Chicken Chasers

After a wet and windy few days the weather cleared just in time for the autumn gathering of the Chapmanslade Chicken Chasers.

The merry band of people and dogs enjoyed a gentle stroll down past Dye House farm, heading up to the field above with views across the Wiltshire and Somerset countryside - pottering onwards past Divers Bridge and along Mill Lane, they headed up through the field past Spring Farm, bearing left towards the memorial field and then across into Black Dog Woods.

Heading back down Wood Lane to complete the circuit and finish up in the comfort of the Three Horseshoes, with a well-earned drink.

The next walk is on **Sunday 18th November**, meeting at **3 pm** at the Three Horseshoes. Younger Chicken Chasers and four-legged friends are welcome for a walk of around three miles.

For further information call **Jaimie** on **07740 473725**

# UPVC REPAIRS WILTSHIRE.CO.UK

## FOR PROFESSIONAL WINDOW & DOOR REPAIRS

Are you having a problem with your UPVC windows or doors?

- ✓ Misted glass
- ✓ Broken or faulty window hinges
- ✓ Faulty locks
- ✓ Jammed windows or doors
- ✓ UPVC door adjustments
- ✓ Window and door handles

Call us – we are here to help

All work guaranteed

01373 430010 07795 143228 [www.upvcrepairswiltshire.co.uk](http://www.upvcrepairswiltshire.co.uk)

## the three horseshoes

Open daily from 10AM-11PM  
serving delicious home cooked food  
(12-3, 6-10 Mon-Sat. & all day Sun.)

Enjoy a refreshing drink in our beer garden  
with spectacular views of Longleat and Cley Hill,  
or indulge with one of our regular meal deals  
by the warm open fire on a bitter winter's day.

We organise monthly events,  
featuring live music, comedy + much more!

follow us on Facebook for more details



threehorseshoeschapmanslade



Fairwood Road, Dilton Marsh, Wilts BA13 4EL  
T: 01373 826792 E: [bookings@fairwoodlakes.com](mailto:bookings@fairwoodlakes.com)



- Café • Soft play • Fishing
- Outdoor play areas
- Luxury lakeside lodges
- Touring pitches

[www.fairwoodlakes.com](http://www.fairwoodlakes.com)



## YOGA CLASSES

Corsley Reading Room

Tuesdays 7-8.30 pm

Wednesdays 5.30-7 pm

(other classes also available)

**Jackie Jasper**

01373 832301 [yogawithjackiej@gmail.com](mailto:yogawithjackiej@gmail.com)

[www.yogawithjackiej.co.uk](http://www.yogawithjackiej.co.uk)





**Shake off those pounds and  
dance yourself fit.**

Chapmanslade Village Hall  
Monday 7.30pm - 8.30pm

Longbridge Deverill Village Hall  
Thursday 7pm - 8pm

For all levels of fitness and  
NO experience needed.

For more information please contact  
Amy 07830 119032

18a Bath Road  
Warminster, BA12 8PD

**Julie Snelgrove**  
Professional Hair Stylist

- ✂ Mobile service on Tuesdays
- ✂ All aspects of hairdressing carried out  
– modern and traditional

Telephone: 01985 300972  
Mobile: 07540 635214  
juliemarshall66@blueyonder.co.uk

**Busy Bees  
Pre-School  
Chapmanslade**



For children aged 2-5 years  
Weekdays (term time only) from 8 am-5 pm

Please contact Kelly Williams to arrange a  
visit and a free trial session for your child  
Breakfast club and after-school club available  
(term time only)

Telephone 07749 257608  
busybeespre-school@hotmail.co.uk

For your  
Heating Oil Supplies  
contact

**KINCH FUELS**

at their  
local depot in  
Devizes, Wiltshire

Telephone 01380 727102

*The company you and  
your home will warm to*



**LUXURY PRIVATE CAR HIRE**

A locally based, door-to-door, personal  
service for up to six passengers in  
air conditioned comfort

**AIRPORTS • SEAPORTS • ANYWHERE**

For bookings, please call  
01985 840088 07903 307734

**WEST COUNTRY SWEEP**

Domestic & Commercial Chimney Services

**Andrew Leigh**

07545 822109  
westcountrysweep@gmail.com



## Kevin O'Mahony

Quality Painter and Decorator

Internal and external painting

Artexing

Wallpapering

Coving

Hand painted kitchen units

07724 349447 or 01985 301197

email kevo7743@googlemail.com

www.thewarminsterpainter.co.uk

*Keep active with physiotherapy*

**Alison Rossiter MCSP HPC**

***Chartered Physiotherapist***

30 years experience in physiotherapy specialising in the treatment of muscle and joint problems.

Helping people to improve their health and fitness through treatment, exercise and advice.

Home visits can be arranged.

Daytime and evening appointments available.

*If you need help please contact:*

**Beckington Physiotherapy 01373 831483**

**Email: arossiterphysio@gmail.com**

**www.beckingtonphysio.co.uk**



**Downlands**  
TREE SURGERY

For Expert Tree Care

Telephone Jon Burgess on

**01985 214320**

Skilled pruning

Tree felling

Stump removal

Qualified and insured

**Free tree health  
survey and quotes**

**DAVID EDMUNDS & CO**  
ACCOUNTANTS & TAX CONSULTANTS

*Specialists in the self-employed, small and  
medium business and self assessment.*

*Preparation of accounts, VAT, PAYE,  
income tax and corporation tax returns.*

*Personal, friendly service*

*Evening appointments by arrangement*

Telephone 01225 334447

Home 01373 832430

**Pippa's Pet Care**

Dog Walking · Cat Sitting

Small Animal Care

**07745 482187 01373 839074**

**Pippaflack@icloud.com**

**Facebook/Pippa's Pet Care**

**Steve Dayman-Johns**

**Driving Instructor**

Condensed Courses and

Gift Vouchers available

**Tel 01373 865422 - Mob 07730 445648**

**email stevekjdj@gmail.com**



**Biology: changing the world**

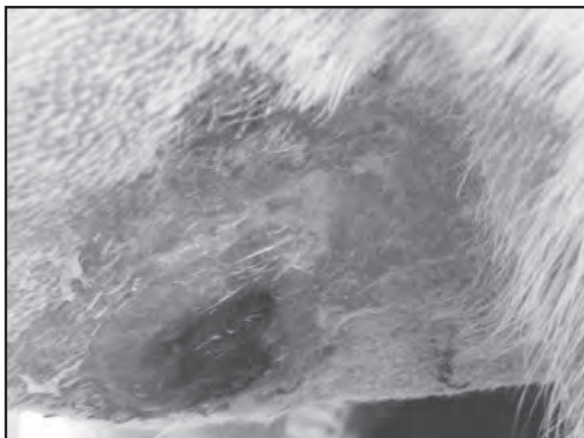
# What is Alabama Rot?

Alabama Rot is the common name for an aggressive, often fatal, disease which affects dogs

Its technical name is 'idiopathic cutaneous and renal glomerular vasculopathy' as it affects the blood vessels and the kidneys and causes lesions on the skin. The common name arises from the fact that it was first discovered in greyhounds in Alabama in the 1980s. These dogs seemed particularly susceptible to the disease.

The disease, or one very similar, was first noticed in the UK in 2012 and the disease has been recorded in a number of different breeds. Interestingly, it appears only to occur in dogs. There were 19 confirmed cases in the UK in 2016, 40 such cases in 2017 and 46 cases to 27 September 2018 (the latest published figures available). These were spread across the UK, with no one area being a hot-spot. However, since 2012 there have been 8 confirmed cases within 20 miles of our villages, and 169 cases across the UK. It is a seasonal illness, most likely to be contracted between November and May in the UK. Although, with changing climate and temperatures, the 'season' may change.

The first symptoms are sores, most likely on the lower part of the leg, but these can also occur on the chest and abdomen. Veterinary investigation shows that there is disruption to the blood supply to the skin, hence the sores, and also reduced kidney function. The mortality rate is about 80%, due to loss of



kidney function. However, early detection is more likely to lead to a successful recovery.

There has been a limited amount of research on the disease and the causative agent is not yet known. It is thought that it could be due to a bacterial infection; *E. coli* and *Aeromonas hydrophila* have both been suggested as the organisms possibly responsible. There is active research to investigate the causes, epidemiology and diagnosis of the disease, some of which has been funded privately by dog owners' groups or the Alabama Rot Research Fund (<http://www.arrf.co.uk>), but there are currently very few reports in the scientific literature. There is apocryphal evidence that the disease is associated with muddy and wet conditions, which may explain the seasonality.



So, what can dog owners do? If your dog gets wet and muddy on a walk, wash its face, legs and lower body as soon as you get home. Look out for sores appearing on legs, body or face. Remember most sores are caused by things other than this disease, such as injury, other infections, parasites or allergies. Veterinary advice is for owners to remain calm but vigilant, and to seek early advice from a vet if their dog develops unexplained skin lesions. You can keep an eye on developments at <http://www.vets4pets.com/stop-alabama-rot/>.

Given the estimated 8.9 million pet dogs in the UK, many of which are walked on a daily basis, the number infected with Alabama Rot is small. It is a devastating disease, but fortunately very rare.

*The photo is reproduced from Veterinary Record, G Mills, v181 (25) p668, 2018, with permission from BMJ Publishing Group Ltd*

Nigel Brown is happy to receive comments, questions and, in particular, suggestions for future articles at [nigelbrown48@gmail.com](mailto:nigelbrown48@gmail.com).

## Changing lives together

# Macmillan Cancer Support

*'Thank you' to all of you in Chapmanslade and Corsley who supported the World's Biggest Coffee Morning by cooking, buying, and eating cake at Barbers Plant Centre on 28th September.*

*A special thanks to the volunteer teams from our villages who set out the tent and were involved in serving, selling and running the tombola, and to Legh, Di and their staff.*

*We raised a grand £1114.38 which is a significant contribution to Macmillan's valuable work.*

*Thank you again  
Liz Garrett and Janet Buick*

## VACANCY

Sticker-upper for skittles at the  
Cross Keys, Corsley.  
Every other Thursday 8.30 to 10 pm.

Good rate of pay!

**Call Ollly 07973 884319**

For up-to-date information such as occasional parish council meetings, church services, previous editions of The Bridge, local clubs and activities, business listings, and other useful information, please visit  
**[www.corsleyandthebridge.co.uk](http://www.corsleyandthebridge.co.uk)**  
Want something added? Just email the Editor with your request!

**PLEASE NOTE THAT THE DEADLINE FOR SUBMISSIONS  
FOR THE JANUARY EDITION OF THE BRIDGE IS  
FRIDAY 7TH DECEMBER**

# ALLSOP CARPETS & FLOORING

DOMESTIC ♦ COMMERCIAL ♦ INDUSTRIAL

Christchurch Street West, Frome BA11 1EB

TEL: 01373 463866 MOBILE: 07887 953014

[www.allsopcarpets.co.uk](http://www.allsopcarpets.co.uk)

## Chapmanslade Village Hall

Can be hired for all your functions:  
parties, weddings, meetings, classes, etc

For hiring information, phone  
Ken Davies 01373 832034 or email  
[kennethdavies1949@gmail.com](mailto:kennethdavies1949@gmail.com)

## KEYVOLUTION

Locksmith and  
Carpentry Services  
serving the Wiltshire Area

Warminster based company offering locksmith and carpentry.  
Police cleared, reliable and honest service.  
Any other quote beaten.

- BS3621 lock upgrades for house insurance approval
- Garage doors, locks and running gear
- Lock repairs – specialising in Chubb mortice locks
- Upvc double-glazed door and window locks fitted – even old ones!
- Door or window locks opened destructively or non-destructively (indemnity required for these services)
- Digital code locks supplied and fitted
- All types of carpentry work – mostly 2nd fix and maintenance

Check out my website

[www.keyvolution.co.uk](http://www.keyvolution.co.uk)



or call Ben on 07748 214799 or 01985 219799

## White Horse Windows

Windows, Doors, Conservatories and  
more...

Local Company, Exceptional Standards  
10 year guarantee

Windows Fascia & Guttering  
Doors Conservatories

CERTASS Registered

For a Free Quotation call Ryan on  
07909 441442 or 01373 302594

## Mole Catcher

01373836350

07512681111

No Mole

No Fee



## ACER TREE SURGEONS



Arboricultural Association  
Approved Contractor

As your local arborist, we are passionate about  
providing a bespoke service when looking after you  
and your trees.

Services include:

- ✂ FREE advice and quotes from a friendly, professional and Arb Association accredited company, fully insured and Council approved
- ✂ Friendly, local and very reliable
- ✂ Tree reductions, re-shaping and pruning
- ✂ Tree removals, dismantling and felling
- ✂ Conservation and TPO applications free of charge
- ✂ Specialist hedge maintenance and trimming of all species, height and shape
- ✂ Inspection reports and tree surveys for proposed dwellings
- ✂ Mortgage reports
- ✂ Stump and root grinding
- ✂ We pride ourselves on leaving gardens tidy
- ✂ Recycling our waste for use as mulch and fuels (both for sale - mulch for weed suppressing, improving soil, footpaths, etc)
- ✂ Cubic metre bags of seasoned logs for sale

[nickcranston@acertreesurgeons.co.uk](mailto:nickcranston@acertreesurgeons.co.uk)

[www.acertreesurgeons.co.uk](http://www.acertreesurgeons.co.uk)

01373 832026 or 07590 986261

85 High Street, Chapmanslade



# BARTERS PLANT CENTRE

## 'Passionate about Plants'

Shrubs ♦ Perennials ♦ Trees ♦ Roses ♦ Conifers  
Climbers ♦ Fruit Trees ♦ Hedging ♦ Soft Fruit ♦ Seeds  
Bulbs ♦ Basket Plants ♦ Bedding ♦ Vegetable Plants  
Christmas Trees ♦ Holly Wreaths  
National Garden Gift Tokens



### Opening Hours

Mon to Sat	9 - 5	(March to October)
Mon to Sat	9 - 4.30	(November to February)
Sun	10 - 4	(March to June + December)

Just off A36 in Chapmanslade, Wilts, BA13 4AL  
01373 832694 [www.barters.co.uk](http://www.barters.co.uk)



## JONATHAN CORP

Painter and Decorator  
General House Maintenance  
Sturford Mead Farm, Corsley  
Warminster, Wiltshire, BA12 7QU  
01373 832213

## Postlebury News R Gould – Newsagent

All papers and magazines  
Home delivery service

01749 850556 07979 452677

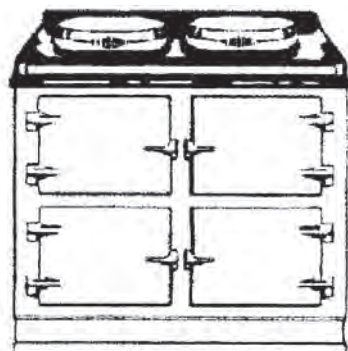


## T A P Services

Telephone 01373 463106

[tapservices@btinternet.com](mailto:tapservices@btinternet.com)

Authorised Stanley Service Agent  
Oil Range Cooker & Oil Boiler Servicing



# Range Cooker Servicing

# COMMUNITY



## SPEED WATCH

Traffic Management remains an important issue within the village, and Community Speed Watch plays an integral part in helping to reduce excessive speeding within the village.

We've seen a noticeable reduction in the average speed over the years, alongside an increase in volume of traffic, so a continued presence is important. Our team of volunteers act as a deterrent, they're not there to 'trap' motorists!

### **We are now looking to expand our Speed Watch Team!**

If you can spare one or two hours a month, we'd love to hear from you! We are particularly keen to hear from some of the younger members of our community although you must be over the age of 18.

- You can help out as often or as little as you are able
- You tell us each month when you are available
- You'll meet other villagers of all age ranges
- You'll receive full training and a Yellow Hi-Vis Vest!

For more information or to register an interest, please contact Phil Holihead on either 01373 467288, or [phil.holihead@gmail.com](mailto:phil.holihead@gmail.com)

We look forward to hearing from you!

## Corsley Festival Choir

The choir welcomes new singers, so come along and give us a try

No audition necessary!

Rehearsal Mondays at 7.15pm, St Margaret's Church, Corsley

Please phone Jenny Ruty on  
01373 832418 for more information

Celebrate the coming of Christmas with all your family

# Join us to sing Christmas Carols

14th December from 6 - 7pm  
in the barn at Manor Farm, Corsley



Come dressed as angels and shepherds

(We want to fill the barn with as many  
angels and shepherds as we can!)

Mulled wine and mince pies to warm!

Plenty of seating and parking available  
Contact Judith Helliar on 01373 832803



BBC  
TW ♥

LOVE IN THE  
COUNTRYSIDE

Love in the Countryside is back and on the hunt for rural singles who are looking for love but find it difficult to meet potential partners.

If this sounds like you or someone you know email:

[LoveInTheCountryside@boundlessproductions.tv](mailto:LoveInTheCountryside@boundlessproductions.tv)



**Corsley Parish Council**

# Parish Council Briefing

Chairman, Neil Britten, rounds up the PC's recent activities

There were no PC meetings in October and no new planning applications were received. However, there has been continuing activity in one or two areas and a re-consideration of decision on an earlier planning application, all worth reporting.

## **Planning Applications**

**18/05160/FUL**

Extension and conversion of existing garage to provide a holiday let and gym to existing building at Lane End Cottage, 72 Lane End Corsley.

As previously reported, the PC had no basic objection to this application, which was within the existing footprint area and in materials which match the existing house. It was also very similar to other developments in the Village. Wiltshire initially rejected the application on the grounds that, as Lane End was "open countryside", such a proposal would breach various County planning policies. An email representation from the PC against this decision elicited a similar illogical response, followed shortly after by a retraction and covering statement that a re-application would be approved. The formal position now is that the application is approved, subject to conditions. The case documents on Wiltshire's website include the email exchange which led to this retraction and which also present an interesting view

of the Case Officer's take on the planning implications of AirBnB.

## **Old School Playing Field (OSPF)**

Work is now well underway by the Wildflower Meadow Team (WFMT) to prepare the ground for the meadow, with the expectation that the first seed planting will be at the end of October. The work is being done by a volunteer force managed by Judith Selman and Chris Johnson; anyone wishing to join the team should contact them.

The results of their efforts will take two to three years to develop during which time the field will remain available as public recreation area. Whilst the WFM area will be managed by the WFMT, the existing Jubilee tree plantation will continue to be the direct responsibility of the PC and an area between the eastern end of the WFM and the OSPF boundary will eventually be planted as a fruit orchard, sponsored by Neil Carpenter and overseen by the PC.

The new entrance has been landscaped and hardcore put down in preparation for installation of vehicle and pedestrian gates between the end of the old tennis court and the old school boundary. The PC is in possession of the fencing and gates which formed the original boundary of Corsley



Primary School, and this will be re-used to form the new entrance arrangements.

## **Streetscene**

### **Sturford Lane**

This was mentioned in last month's brief and Simon Jasper continues to maintain contact with both Wiltshire and Longleat to deal with an accumulation of issues. Wiltshire Council have issued felling notices for two obviously dead trees, one in Sturford Lane. In addition, the Council Area Engineer has carried out a site visit in Sturford Lane and identified a number of additional trees that may be the subject of further notices. The day after that visit another large branch from the Longleat frontage fell, blocking the lane, which was removed by the Sturford Mead gardeners, which was greatly appreciated. Simon has been in contact with Longleat's arborist/tree surgeon to discuss the Council's tree notices and he indicated a survey of the lane would be completed. This is being pursued with Longleat.

The current position, reached with Wiltshire Council advice, is:

- Further identified trees to be inspected by the Council's arboreal contractor
- The PC, if it becomes necessary, to write formally to Longleat covering the following issues:
  - a tree survey and the removal of unsafe trees with a commitment to regular review.
  - removal of the canopy over the width of the lane to a height of at least 5.1m in accordance with Highway's regulations.
  - the removal of dead branches that overhang the lane.
  - the removal of debris on the banks that would ultimately fall into the road.
  - the cutting back of the hedge between

Temple and Chatter Alley (not cut last year)

- the reduction of the hedge just to the east of Chatter Alley on the north side of the lane.

The PC has not yet taken this formal step and is continuing direct discussions with Longleat and Wiltshire Council.

## **Parish Steward priorities**

Current priorities are:

- Cut back drain vegetation (Whitbourne Moor/Springs, Dertford, Lane End, Stalls, north side of A362)
- Clear large drain taking Longleat run-off from Longleat bridle path 150m east of Longhedge
- Clear ditch and culvert on corner/junction outside 51a Whitbourne Moor
- Drain taking run-off from Rushpool Lane in to the lane near the stables at Whitbourne Moor

## **Speedwatch**

We continue to press the Police for an answer to our Speedwatch appeal and observations on illegal HGV traffic travelling West on the A362.

## **Dates of next meetings**

Quarterly Meeting

Monday 3rd December (Precept setting)

All meetings start at 7.30 pm and are in the lower room at Corsley Reading Room.

Please note the change to Neil's email address

Neil Britten  
Chairman

pc.corsleynb@gmail.com  
01373 832515 or 07810 764714

[www.corsleyandthebridge.co.uk](http://www.corsleyandthebridge.co.uk)



# Clean-it

Recommended by



Carpet and upholstery cleaning specialist

01373 462059 07779 247961 [www.clean-it.biz](http://www.clean-it.biz)

Home ~ Private ~ Lettings

15%  
Minimum  
Savings

**Garston**  
Veterinary Group



Spread the cost of your  
pet's preventative  
healthcare into affordable  
monthly payments

Our Wellness Plan has been specifically designed so that your pet receives all of the essential vaccinations and parasite treatments and also a whole range of additional benefits to help ensure that they remain in the best possible health.

Cats £10.30  
per month

Dogs from £12.50  
per month \*

\*please contact one of the surgeries for specific prices for your dog. Prices are based on adult weight.

[wellness@garstonvets.co.uk](mailto:wellness@garstonvets.co.uk)

Frome	Melksham	Trowbridge	Warmminster	Westbury
01373 452225	01225 617779	01225 754021	01985 213350	01373 301446



[www.garstonvets.co.uk](http://www.garstonvets.co.uk)



Domestic Appliance Sales and Repair Service

## Domesticare

21 Keyford, Frome

[www.domesticarefrome.co.uk](http://www.domesticarefrome.co.uk)



01373 467351

## Childminder

Ofsted registered

Full and part time. Before and after school  
Holiday spaces available

Pick-up and drop-off offered

Call 01373 832854 or 07883 025476  
[d.m.rawlings@outlook.com](mailto:d.m.rawlings@outlook.com)

# DRIVE IN AND PICK YOUR OWN FIREWOOD

Woodchip, Mulch  
Hardwood Logs, Softwood Logs  
Kindling, House Coal, Smokeless Coal  
*Delivery available*



Mon to Fri: 7.30am - 4.15pm

Closed on Sundays & Bank Holidays

Open Saturdays from Sep-Mar only until 12 noon

01985 213507 [www.longleat.co.uk/forestry](http://www.longleat.co.uk/forestry)

*5% discount for tenants of Longleat Estate*



**LONGLEAT  
FORESTRY**

# Corsley Remembers

Friday 9th November

**'Lest We Forget'**

**7.30pm, St Margaret's Church**

An evening of music and songs, featuring individual performances by local talent. At the end of the evening, the choir will be singing songs of the war period (with audience participation).

During the evening Andrew Campbell will give a brief history of WW1.

Very importantly we will be launching the book 'Lest We Forget', written by Fiona Carruthers and Phil Jefferson covering the history of both Corsley and Chapmanslade during the First World War. They have researched all the individuals who fell in battle during the war that are on both Corsley and Chapmanslade War Memorials. A map of Europe will be hung in the Church marking the grave or memorial of all those individuals.

It would capture the history of the period if the audience came dressed in costume, but this is not essential.

We are looking for memorabilia to have on display, so if anybody has any please contact John Helliard on 01373 832803.

There are no tickets for this event, but donations would be very welcome and will be collected for the Royal British Legion.

There will be a bar and light refreshments available.

# Chapmanslade Act of Remembrance

Sunday 11th November

## Programme

**From 10.30 am:** Assemble at the War Memorial in the churchyard. There will be a Garden of Remembrance with crosses commemorating the seventeen village residents who lost their lives in the conflict. You may wish to place a cross there in memory of a member of your own family who died. On the church wall there will be a cascade of over 1,200 poppies knitted by village residents.

**10.50 am:** A short Act of Remembrance will take place at the War Memorial, including the reading out of the names of the seventeen who gave their lives in the service of their country and a wreath laying ceremony, followed by two minutes' silence.

**12 noon:** Planting of commemorative trees at the Memorial Field, followed by a Bring and Share lunch in the Village Hall.

The new book, "**Lest We Forget**", a story of life in Corsley and Chapmanslade during WW1 and the local men who lost their lives in the war, will be on sale at the Village Hall. Proceeds will be donated to the British Legion.

**All village residents are invited to join us at this important event so that as a community we can show our respect for the men of our village who sacrificed their lives in the "Great War".**

# Little Cuckoo's Pre-School

Lyes Green, Corsley, BA12 7QH

Friendly, dedicated pre-school in the heart of the countryside for children aged 2-5 years

Monday, Wednesday, Thursday and Friday  
9 am - 3 pm during term-times

We accept 2-year-old funding in accordance with Wiltshire Council guidelines  
Mother and Toddler group Tuesday mornings  
10 am - 11.30 am during term-times



## SESSIONS AVAILABLE NOW

Speak to Hayley McMahon  
Pre-School Manager on 01373 832298

Find us on facebook or visit [www.littlecuckoos.co.uk](http://www.littlecuckoos.co.uk)

**A free trial session is available**

Registered Charity Number 1064800

# Corsley Tennis Club



New members welcome –  
all ages, all abilities

Three hard courts available all year

Weekly junior coaching available

Low subscriptions

Contact either

Emma Fox 07512 009580

Sue Newell 01373 825560

[www.corsley-tennis.uk](http://www.corsley-tennis.uk)

CHRIS SEVIOUR  
Building Services

07894 708949

[cmseviour@gmail.com](mailto:cmseviour@gmail.com)

Roofing, Loft conversions,  
Extensions, Plastering,  
Natural stonework

# Cross Keys

Community Free House  
Lyes Green, Corsley, BA12 7PB

Monday, Wednesday, Thursday (closed Tuesdays)

12 noon to 3pm      5.30 to 10pm

Friday and Saturday

12 noon to 3pm      5.30 to 11pm

Sunday

12 noon to 10pm



**01373 832406**

[www.crosskeyscorsley.co.uk](http://www.crosskeyscorsley.co.uk)

Facebook @CrossKeysInnCorsley

# NOTEBOOKS<sup>2</sup>GO

Laptop / PC / Tablet / Phone / Apple  
Repairs / Upgrades / Accessories

We can repair all of your

Apple Devices!



Tablet & Smartphone Repairs

"Affordable Reliable Service"



Screens - Charge Port - Camera - Battery - Headphone Jack & More

## Computer Repair

any brand, any problem



DELL TOSHIBA hp acer Gateway ASUS SONY VAIO SAMSUNG

51 Haynes Road, Westbury, Wiltshire, BA11 3HD

Tel - 01373 865400 / Email - [support@notebooks2go.co.uk](mailto:support@notebooks2go.co.uk)

# Seven Open Doors

Dear Friends,

Yesterday we celebrated my mother's 90th birthday. My sister had found a lovely photograph of my mother and her two siblings that she had enlarged and surrounded with smaller photographs, providing a snapshot over the years of my mother's life. It was very poignant to look at that little girl with her 1920's dress and haircut and see the story of her life as it developed and to think about the memories encapsulated in those photographs.

Memories play a huge part in the life of our church this month as they do in the nation as whole in the form of Remembrance Day. Of course this year is particularly special as I am sure everyone is aware: the Armistice was signed at 5am on 11th November 1918 and came into effect five hours later, bringing about the cessation of hostilities in the First World War and there will be numerous public events to commemorate this anniversary.

It occurred to me when I was thinking about this that my generation must be the last generation to have actually had personal contact with family members who were involved in the above conflict. I have a faded sepia photograph of my grandfather in his military uniform; he was a train driver until his train was blown up, at which point he was invalided home. I knew him very well indeed because he lived with my family until I was 13. He used to tell my sister and me frightful stories about his time in France. I have to say though there seemed to be quite a few women involved and at this point my mother would try to shut him up! And then there was my great Uncle Will who flew aircraft during the war. I actually took my older children to meet him when he was very old and they remember his stories too. I'm so glad they have that memory.

Every family will have their own stories and memories and indeed their own faded sepia photographs from a different time in a different world. But what hasn't changed is the terrible cost of conflict in terms of human life and the physical and psychological damage such conflict inflicts upon men and woman. Yes, we must have our military parades and our public services but when it comes down to it war is about flesh and blood individual people, deeply loved people who return from war zones weighed down with memories buried deep inside them that change them forever.

So, of course we must remember and honour those who died in conflict, of course we must have our public events, but don't let's forget the reality of the cost, which didn't end on November 11th 1918 but continues to this day.

With love and prayers  
Pauline

# November Church Diary

## Sunday 4th November: All Saints

8am at St Mary the Virgin, Kingston Deverill: 1662 Holy Communion

9.30am at St Margaret's, Corsley: Eucharist

Collection of shoeboxes for Operation Christmas Child

10.30am at St Peter & St Paul's, Longbridge Deverill: Morning Worship



## Monday 5th November

10.30am at 4 Southcroft Drive, Chapmanslade: Time to Think Home Group



## Friday 9th November

7.30pm at St Margaret of Antioch, Corsley: Armistice Concert



## Sunday 11th November: Remembrance Sunday

10.30am at the War Memorial, Chapmanslade: Act of Remembrance followed by tree planting at Memorial Field and Bring & Share Lunch

10.50am at St Mary's, Kingston Deverill: Remembrance service

10.50am at St Margaret of Antioch, Corsley: Remembrance service

10.50am at Horningsham War Memorial: Remembrance service



## Tuesday 13th November

7.30pm at The Anchorage, Corsley: After Alpha Home Group



## Thursday 15th November

10am - 12 noon at Three Horseshoes: Church & Community Coffee Morning



## Sunday 18th November: Second Sunday before Advent

10.30am at St Michael the Archangel, Brixton Deverill: Eucharist

10.30am at St Margaret of Antioch, Corsley: Family Worship



## **Monday 19th November**

**10.30am at 9 Cleyhill Gardens, Chapmanslade: Time to Think Home Group**

## **Wednesday 21st November**

**7.30pm at Stable Cottage, Chapmanslade: Parochial Church Council**



## **Sunday 25th November: Christ the King**

**9.30am at St Philip & St James', Chapmanslade: Eucharist**

**10.30am at St Peter & St Paul's, Longbridge Deverill: Eucharist**



## **Tuesday 27th November**

**7.30pm (venue to be confirmed): After Alpha Home Group**



## **Wednesday 28th November**

**12.30pm at Corsley Reading Rooms: Lite Bites Soup Lunch**

---

## **Operation Christmas Child**

We shall be collecting the full shoeboxes for the annual appeal for Operation Christmas Child at our services on 4th and 11th November. We do still have shoeboxes at both Churches if you want to join in.

## **WW1 & Remembrance Centenary Commemoration**

There will be an Armistice Concert at 7.30pm, Friday 9th November at St Margaret's Church. Please see the information elsewhere in The Bridge for further details.

On Sunday 11th November we shall gather at around the War Memorial in Chapmanslade at 10.30am where, if you wish, you can place a cross in a Garden of Remembrance. Following the Act of Remembrance which starts at 10.50am, we will move to the Memorial Field where trees will be planted and dedicated to the fallen. This will be followed by a 'bring and share' lunch.

At St Margaret's there will a service of Remembrance at 10.50am

The new book by Fiona Carruthers and Phil Jefferson will be on sale over this weekend with the net proceeds going to the Royal British Legion. The book gives an overview of life in Corsley and Chapmanslade during the period of the First World War as well as listing all the known details of the men from our two villages who lost their lives during the conflict. This excellent book will be on sale at the concert and at the lunch.

## Traidcraft at Coffee Morning

At our coffee morning on 15th November we will have a stall selling ethical Christmas gifts from Traidcraft. You can help make a difference to the lives of adults and children throughout the developing world by buying fair trade products. See the advert elsewhere in The Bridge for details.

## Fundraising

Our now traditional Christmas Coffee Morning will be held on Saturday 1st December at The Stable Cottage, Huntenhull Lane, Chapmanslade from 10am to 12 noon. There will be various stalls and produce as well as coffee and mince pies. The Christmas 50/50 Draw will also take place at this event.

## Congratulations

We congratulate Ian Meadows and Elizabeth Scott on their marriage at Longbridge Deverill on 6th October.

Rural Dean	Rev Pauline Reid revpauline@btinternet.com	01985 841290
Lay Pastoral Assistants	Richard Dean Barbara Hughes Claire Tanner	01373 832594 01373 832273 01985 218099
Pastoral Visitor	Alan Hopkinson	01373 832393
Churchwardens		
St Philip & St James'	Ian Buick	01373 832318
St Margaret's	John Helliard	01373 832803
Deputy Churchwardens		
St Margaret's	Currently vacant	
St Mary's	Harcourt Gough	01373 832039
St Philip & St James'	Janet Aylesbury	01373 832752
PCC Secretary	Phil Jefferson	01373 832845
PCC Minute Secretary	Sue Fear	01373 832074
PCC Treasurer	Keith Muston	01373 832755
Benefice Administrator and Safeguarding Officer		
	Marion Muston cleyhillchurches@gmail.com	01373 839026 01373 832755

Copy for Seven Open Doors should be sent to Keith Muston at themustons@btinternet.com subject 7ODs or phone 01373 832755.

If you would like to receive weekly news of Church events and activities, please send your email address to the above, with subject 'Through the Open Doors' or download a pdf from the 'churches' pages at [www.corsleyandthebridge.co.uk](http://www.corsleyandthebridge.co.uk)

Expert repairs for  
PCs & Laptops  
Macs  
iPads  
Tablets



Frometech

Tuition available  
Macs, PCs and iPads

Take the stress out of IT  
Call Today!

Security Review of  
your computer

01373 470170  
[www.frometech.co.uk](http://www.frometech.co.uk)

### Qualified & Experienced Counsellor

**Lisa Adams Dip.Couns. Reg.BPC**

Weekly sessions offered for adults on an open-ended or short-term basis according to individual requirements

**Tel: 07904 843122**

**email: [lisaadams.corsley@gmail.com](mailto:lisaadams.corsley@gmail.com)**

### Ski Apartment – French Alps

Ski in/ski out – sleeps 6

**Well equipped – immaculate condition**

For more information or to book online visit:

**w.** [www.ski-les-cimes.co.uk](http://www.ski-les-cimes.co.uk)

**f.** [facebook.com/ski.les.cimes](https://facebook.com/ski.les.cimes)

**e.** [lesleygolledge@gmail.com](mailto:lesleygolledge@gmail.com)

**t.** 01373 832533

## npv plumbing & heating

Installation • Servicing • Repairs

Bathroom and tiling specialists

All plumbing and heating work undertaken

Our fully qualified plumbers offer all general plumbing services from boilers to bathrooms. We will gladly advise clients on the most suitable products for their property – be it heating systems, boilers, radiators, bathrooms or showers.

07738 940355

[www.plumbersfrome.co.uk](http://www.plumbersfrome.co.uk)

## Hypnotherapy

If you need help with:

Anxiety

Depression

Phobias (such as flying or spiders)

Panic attacks

Relaxation

Weight management

Smoking cessation

Natural childbirth

Confidence

Public speaking

Exam nerves

and much, much more...

Call ANJI HOLLAND on  
07944 647 978 / 01373 832 898  
to enquire or just for a chat

[www.hollandhypnotherapy.com](http://www.hollandhypnotherapy.com)

With practices in Chapmanslade and Bath

I am a member of the National Council for Hypnotherapists  
and am bound by their code of practice and ethics

**Corsley WI**

# October news

Alice Helliear rounds up the October meeting and announces some forthcoming events



Armed with glue sticks, knitting needles, coloured paper and wool the WI set about making poppies to decorate the church for the WW1 Centenary Remembrance Commemoration in the village.

The highly skilled amongst us soon had sparks flying from their knitting needles as they raced through knitting patterns with red and black wool, dropping stitches here and adding stitches there (deliberately not accidentally!), creating the most beautiful poppies that you have seen.

Being a newer and slightly younger member of the WI, who doesn't appear to have nurtured many of the traditional skills of the WI (even though my grandmother taught me to knit and crochet when I was very little) I opted for the coloured paper options. At my table, the lovely Mandy guided me and others through the process of cutting out leaves, petals and 'middles' and forming them into the more familiar paper poppy. That said, if it was a game of quantity over quality, the paper poppies definitely won. We made over 20 on our table!

There was a moment of light relief with an early interval of tea, coffee and some rather delightful flapjacks that had a very special ingredient in them, a recipe that may be uncovered in due course!

In the background of the hum of creativity that had swept through the Reading Rooms, the President reminded us of a number of

trips, meetings and other forthcoming events in both WI and the village.

The most relevant to the Corsley WI being the next meeting, which is making Christmas Wreaths at 7.30pm on Thursday 8th November in the Reading Rooms. Non-members are very welcome but if you would like to make a wreath you will need to bring a wreath ring (available at florist/garden centres), some foliage and decorations. The technicalities will be revealed on the evening by the lovely Debbie Fraser.

Then there's the WI Christmas Meal at 12 noon on Thursday 13th December at The Royal Oak. Remember menu choices and money are needed at the November meeting.

The competition was for a piece of memorabilia of the WW1 period and was won by Caroline with a beautiful collection of drawings, second was Val with a selection of newspaper cuttings and a shield and Annie with a lovely book came third.

The Corsley WI also have skittles, scrabble, bridge and lunch clubs which are also open to non-members. There are also a large number of county and national trips, workshops and other activities that members can join in with.

For more information please do not hesitate to contact Judith Helliar on 01373 832803.

# Lest We Forget

Our new book, 'Lest We Forget', will be launched at the concert in St Margaret's on 9th November and will be on sale that evening and following the Remembrance services in the two villages on the 11th.

In the book, we pay tribute to the men of Corsley and Chapmanslade who gave their lives in the service of the country and to our communities supporting the war effort from a distance.

Proceeds from the sale of the book will be donated to the British Legion.

*Fiona Carruthers  
Phil Jefferson*

**PLEASE NOTE THAT THE  
DEADLINE FOR SUBMISSIONS  
FOR THE JANUARY EDITION OF  
THE BRIDGE IS  
FRIDAY 7TH DECEMBER**

## Christmas Shopping Trip

**West Quay  
Southampton**

**Tuesday, 27th November  
Leaving the Three  
Horseshoes  
at 9.15 am**

The driver will drop us off outside the indoor shopping mall so everyone will be able to shop warm and dry! West Quay contains around 130 shops such as John Lewis, Marks and Spencer, Zara, Schuh, Waterstone's, Hollister Co, Apple and many more top brand names.

The coach will leave West Quay at 3.15 pm and there will be plenty of room to store shopping bags in the coach hold.

Cost will be £12.50  
Please call Renée on 01373 389008



## Order now for Christmas

Fresh, naturally reared  
bronze turkeys and  
free-range geese

**Telephone 01373 832555**

# Chapmanslade Motor Services

**Vehicle repair  
and servicing**

**Brake  
specialist**

**MOT preparation  
and repairs**



**Batteries  
Exhausts  
Tyres**



*Quality service at competitive rates*

**FREE** ~ wheel balancing and tracking with new tyres

**FREE** ~ courtesy car

Electronic diagnostics available – most makes covered

Green Farm Industrial Estate, Chapmanslade

01373 832188 or 07711 256927





**01373  
455911**

**CLEANING & MAINTENANCE 2000 LTD**

**OUR SERVICES INCLUDE**

- Domestic Cleaning
- Commercial Cleaning
- Upholstery Cleaning
  - Carpet Cleaning
- One off Spring Cleans
- Garden Maintenance
  - Home & Garden Clearance

 [www.busybees2000.co.uk](http://www.busybees2000.co.uk)   
[info@busybees2000.co.uk](mailto:info@busybees2000.co.uk)

**JOHN E S JONES  
& SON LTD**

**GENERAL  
BUILDER**



Carpentry, painting and  
decorating, extensions, uPVC,  
facias and gutters, fencing,  
decking and patios

**Please call**

01373 832600

07795 177920

07810 646335



# Is all well with the bees?

I keep my bee hives at the bottom of our garden in Lyes Green. I frequently stroll down the garden to watch the returning bees alight on the landing stage; they are greeted by the guard bee and then disappear into the hive to store their load of nectar. Sometimes bees return with bright yellow or orange pollen on their legs, essential for feeding the baby bees. It is very satisfying to stand and watch, and also to listen to the low hum. This year, because of the warm, dry summer, my colonies did well, each hive producing about 70 lbs of honey. So all is OK, or is it?

You may have read in the newspapers about the declining numbers of bees. The varroa mite arrived in the 1990's, entering the hives damaging the wings of baby bees. Beekeepers have in the main successfully treated this but colonies of honey bees in the wild were left untreated and many died out. Another danger has been the use by farmers of some pesticides, especially neonicotinoids; fortunately for the bees the EU has recently banned this. The latest problem is the arrival in Cornwall of the Asian hornet which can enter hives and destroy the bees. These hornets are distinguishable by their yellow-legs; if you spot one please tell me so that the Regional Bee Inspector can be summoned to find the hornet's nest and destroy it.



## How essential are bees for pollination?

Cereal and many other crops are wind pollinated and do not require insects. Vitamin C requirements are another matter as 80% of our fruit trees are dependent on honeybees. Without them there would not be much hope for apples, pears, plums and cherries.

However, all is not bad news. There has been a change in the nature of beekeeping. Many young people, keen on the environment, are starting to keep bees. A while ago when I advertised some bee keeping equipment for sale, two young ladies from Westbury turned up. I asked them why they were buying the equipment. Both wanted to start beekeeping but, whilst one lady replied that she liked honey, the other said it was because she wanted to preserve the environment through pollination. The number of beekeepers in England is increasing by about 5% per year and the number of colonies is growing. In the Warminster and Westbury branch the number of members, especially younger members, and those attending training courses, is increasing. This is good news for production of local honey and for pollination. The battle to preserve our bees is slowly being won!

*Richard Dean*

# TEA & sympathy

Considerate catering at a difficult time

*All our food is homemade, we provide delicious teas, sandwiches and cakes through to more elaborate options.*

*We offer a truly bespoke, caring and professional service.*



Telephone Kim Clark on 01373 832151 or 07843 056916

e-mail [kim@teaandsympathy.uk.com](mailto:kim@teaandsympathy.uk.com)

[www.teaandsympathy.uk.com](http://www.teaandsympathy.uk.com)

## CHANTRY CONSTRUCTION

stone walling • patios

drives • extensions

*prompt reliable service*

*mini digger and driver for hire*

**01373 836787      07855 343388**

COMPUTER & LAPTOP REPAIRS  
UPGRADES / SYSTEMS & LAPTOPS

VIRUS REMOVAL / BROADBAND  
WIRELESS / NETWORKING



FAST, FRIENDLY, PROFESSIONAL SERVICE  
COMPETITIVE RATES  
ONSITE OR WORKSHOP

CCO CompTIA

call  
**01373 302901**

[www.ntscomputing.co.uk](http://www.ntscomputing.co.uk)  
[help@ntscomputing.co.uk](mailto:help@ntscomputing.co.uk)

### LAPTOP REPAIRS

We also replace  
laptop screens,  
keyboards,  
CD-DVD drives,  
fix overheating  
and more

## Forget-me-not

• GARDENING SERVICE •



Weeding, pruning, planting,  
fence painting, etc

01373 464416

07890 850465

## Do you need a plumber? Call...



## Paul Antell Plumbing

07890 366832

01373 467427

Professional, reliable, friendly and local  
[paulantellplumbing@talktalk.net](mailto:paulantellplumbing@talktalk.net)  
[www.paulantellplumbing.co.uk](http://www.paulantellplumbing.co.uk)

## Hypnotherapy for you!

Solution Focused Hypnotherapy is a safe, practical therapy and can help you to:

- Feel better about yourself
- Achieve work, play, lifestyle balance
- Improve many areas of your life

Fiona 07801 436633

fiona@balancehypnotherapy.co.uk

www.balancehypnotherapy.co.uk



## RICHARD ROBBINS

City and Guilds Trained Gardener

*All aspects of Garden work undertaken*

07510 130083

## Rose Knight

Dog and cat  
minding service

01373 464904

07773 435254

knight\_rosemary@sky.com



# TREVOR & JON *by Amy*

Unisex Hair Salon

**01225 754001**

**trevorandjonbyamy@outlook.com**

Unit 2 Stone Mill, Trowbridge BA14 8BU

## JD Weed Control

JDweedcontrol@gmail.com

Call James on 07850401547

Free, no obligation quotation

Flower Beds - Patios - Borders - Drives

Non-Chemical Weed Control & Prevention

James, Rob and Adam, former employees of Roger Patch Ltd are pleased to introduce...

# CMP Complete Ltd General Builders

19 Swaledale Road, Warminster, BA12 8FH

**James** 07801 868288

**Rob** 07766 905131

**email** cmpcompleteltd@gmail.com

HETAS registered to fit woodburners

# Campanology News

You are no doubt aware that this year, the 11th November is very important as it's the centenary of the finish of the First World War. Church bells throughout the country will ring both to honour those who were lost and to celebrate the end of this devastating conflict and Corsley are, of course, joining them.

Our treble bell was removed in July to have four cracks repaired and to be tuned and we are desperately trying to get it reinstalled for these events. If we are successful in this we are attempting to ring a ¼ peal of Grandsire Doubles with the bells half muffled on Wednesday 7th November at 7.30 pm. This is to honour all those who fell from Chapmanslade and Corsley.

We are ringing before and after the evening of music and songs being held at the Church on Friday 9th November at 7.30 pm to give added atmosphere to this very interesting evening.

On Sunday 11th November, we will be ringing half muffled at 10.20 am for the service, 12.30 am on open bells which is the time all church bells in the country have been asked to ring and also at 7.05 pm in the evening in celebration of the total official announcement. I am pleased to say that all the tower band will be involved in at least one of these events as church bells throughout time have played a large part in national and international events of moment.

*Marion Moldon*  
01373 832672

## Light Bites is back!

Come and join us for scrumptious soup and convivial conversation.

Light Bite lunches are held every fourth Wednesday of the month at 12.30pm in the Reading Room.

Everyone welcome – we look forward to seeing many old faces and lots of new ones too.

### Mole Catcher

01373 836350

07512 681111

No mole, no fee!



## Church and Community Coffee Mornings

A warm welcome to come along to our church and community coffee mornings held each third Thursday of the month. We meet at The Three Horseshoes in Chapmanslade from 10 until noon.

If you're new to the village, this is the place to come to be warmly welcomed and to say hello. Pauline, our vicar, and Debbie or Candy, our PCSOs, are often able to join us. We look forward to seeing you.



# **CORSLEY MEMORIAL PLAYING FIELD COMMITTEE**

## **ANNUAL GENERAL MEETING**

**Thursday 22 November 19.30hrs  
Cross Keys back room**

*All welcome*

**Followed at 20.00hrs by**

## **CORSLEY CRICKET CLUB AGM**

**For more information, please contact  
Marion on: 01373 832 314, 07796 544 565**

**[marion@nmc2.co.uk](mailto:marion@nmc2.co.uk)**

**or Lesley Pearce on: 01985 220 479  
[arandlj.pearce@googlemail.com](mailto:arandlj.pearce@googlemail.com)**



## One Team

# Community Policing

Warminster Town and Villages combined (Area Board)

## Domestic abuse

Domestic abuse isn't just about violent or threatening behaviour. It can happen to anyone regardless of gender, religion, race or sexuality. It can happen in short and long term relationships.

## Types of Abuse

- Psychological and emotional abuse
  - Making you question your worth
  - Controlling contact with your family and friends
  - Making you feel like you couldn't cope on your own
- Sexual abuse:
  - Any sexual act where you are forced to do something you don't want to
- Financial abuse:
  - Controlling access to money
  - Accounting for every penny spent
  - Stopping you from getting a job
  - Spending money allocated for other things
- Controlling and coercive behaviour:
  - Tracking and monitoring
  - Isolation
  - Threats

## Know the signs

Releasing you or someone you care about who is in an abusive relationship is the first step to ending it.

## Signs you might be in an abusive relationship

- Your partner is violent towards you, inflicts physical injuries to you or threatens you with violence
- Your partner verbally abuses you, criticises you, puts you down or makes you feel inferior or worthless
- Your partner controls where you are allowed to go, who you are allowed to see, what you can spend money on, what you can do and what you can wear
- Your partner sends you excessive messages, emails or voicemails or calls you all the time to monitor what you're doing
- You avoid seeing friends or family and become withdrawn, isolated or reluctant to leave the house
- Your partner makes you feel afraid of them
- You think you are to blame for the way your partner treats you
- You feel embarrassed for your friends and family to see how your partner treats you.

## Signs that someone you know might be in an abusive relationship

- They are reluctant to do anything with friends or family and become withdrawn
- They seem depressed
- They get anxious if plans change suddenly or they might be late home

- They have signs of physical injuries
- They get lots of phone calls, messages or voicemails from their partner when they are out
- They avoid meeting you when their partner is around
- They seem fearful of their partner
- Checking if someone has been in an abusive relationship before

### **Practical advice if you're in an abusive relationship**

It is not always possible to think clearly when experiencing domestic abuse. However the following advice can help:

#### **Planning ahead**

- Make a plan for how you can get out safely
- Think about talking to your neighbours
- Arrange to have a place to go
- Make copies of important documents
- Have a list of important phone numbers available
- Pack an overnight bag
- Put aside money and spare keys

#### **If you live alone**

- Change your locks and secure your doors and windows
- Change your phone numbers
- Tell trusted friends and family

#### **During an incident**

- Get out if you can
- Avoid rooms with only one exit
- Avoid the kitchen, bathroom and garage if possible

#### **Once you're out safely**

- Tell your work and children's school and / or nursery if appropriate

- Change your daily routine
- Plan ahead for unexpected contact with the abuser

### **Fireworks**

Fireworks can be distressing for animals, please bear in mind any animals nearby, especially in our rural area, there are many horses, cattle, sheep as well as cats and dogs. If you are planning on having fireworks works please inform your neighbours or anyone who may have animals close by in advance to allow them to take relevant action, moving them or keeping them indoors etc. Alternatively there are many organised displays you can attend in the area. Please remember that it is an offence to let off fireworks in a public place unless this is an organized event. This is [Wiltshire.co.uk](http://Wiltshire.co.uk) has a list of local organised fireworks displays.

#### **Fireworks safety advice**

- Stand well back
- Keep pets indoors
- Keep fireworks in a closed box
- Only buy fireworks marked BS 7114
- Light at arms length, using a taper
- Follow the instructions on each firework
- Never give sparklers to a child under five
- Don't drink alcohol if setting off fireworks
- Always supervise children around fireworks
- Never put fireworks in your pocket or throw them
- Never go near a firework that has been lit - even if it hasn't gone off it could still explode.



# Cinema Corsley

**Thursday 15th November**  
**WW1 Pathé News films**

In the same week as the centenary of the Armistice, we are showing a series of Pathé News clips from WW1. The short, sometimes silent, films depict the many aspects of life at the Front. Probably the most accurate and comprehensive insight we have into conditions during the war, this footage provides a fitting tribute to those whose experiences we hope are never repeated.



**The Secret Spitfires (Certificate PG, running time 52 mins)**

After the interval we fast-forward to WW2, showing a short film entitled *The Secret Spitfires*. The story of hundreds of women, girls and a handful of men who built Spitfires in secret. Thousands of Spitfires

were built and hidden in sheds, garages, bus depots and even an hotel, but nobody ever knew. A true story of ordinary people doing extraordinary things.

**Looking ahead...**

**Mamma Mia! Here we go again**  
(Certificate PG, running time 1hr 54mins)

**Thursday 13th December**

In contrast to the commemorative films of recent months, we finish the year on a lighter note. The *Mamma Mia* sequel continues the story of Sophie (Amanda Seyfried) and her mother Donna (Meryl Streep), set on the fictional Greek island of Kalokairi. The film is both a sequel and prequel, flitting between the present and past, unwrapping Donna's young life and how the friendships forged impact on Sophie's life today. In addition to the familiar cast, including Julie Waters, Pierce Brosnan, Colin Firth and Amanda Seyfried, Lily James joins them as the young Donna. The disappointment of a smaller role for Meryl Streep is compensated by the arrival of Cher as her mother. The colour and warmth of this feel-good, ABBA-based musical comedy gives us a taste of summer as the year's shortest day beckons.

We'll also be showing a touch of Corsley summer with the short film made at this year's 100th Corsley Show. Come and see if you were caught on camera as we celebrate this milestone anniversary in our village's history. DVDs available on the night, priced £10.

Doors open 7pm for a 7.30pm start at Corsley Reading Room. Tickets £6 from Acres Supply (cash only please) or on the door. Refreshments and a licensed bar.



Chapterhouse Theatre Company

# 'A Christmas Carol'

tour of the UK and Ireland

**Thursday 6th December**  
**St Margaret's Church, Corsley, BA12 7QE**



This winter, Chapterhouse Theatre Company is delighted to be continuing its festive tradition of touring Charles Dickens' 'A Christmas Carol' to theatres and stately homes across the UK and Ireland and are very pleased to be coming to St. Margaret's Church in Corsley on Thursday 6th December

On Christmas Eve, the most magical night of the year, the miserly Ebenezer Scrooge is whisked away on a journey through the past and into the future, accompanied by three fearsome ghosts determined to show him the true meaning of Christmas.

This winter, Charles Dickens' classic ghost story is brought alive in a traditional production, complete with beautiful period costume, song, dance, and a magnificent musical score. Join critically-acclaimed Chapterhouse Theatre Company and see whether Scrooge's frozen heart will melt in time for Christmas Day...

**Doors open at 6.30pm for a festive mince pie and glass of wine.**  
**The performance begins at 7.30pm.**

**Adults £15, child £10, family (two adults and two children) £45**

Pay by BACS and collect tickets on the gate (contact office for details)  
or by cheque to 'The Elizabethan Playhouse' with a SAE and send to  
Manor Farm, Corsley, Warminster, Wiltshire, BA12 7QE  
[office@theelizabethanplayhouse.com](mailto:office@theelizabethanplayhouse.com)

# Piano Lessons

*All standards welcome*

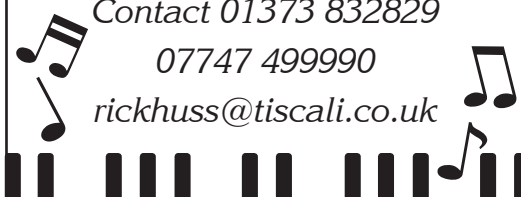
**Debbie Rickhuss**

Teacher of Pianoforte and Theory

Contact 01373 832829

07747 499990

rickhuss@tiscali.co.uk



# M W Garden Services

20+ years experience

A tailor made service for all types of garden maintenance

Insured and CBI's checked

mark22.weaver@mypostoffice.co.uk

Telephone 01373 832854

Mobile 07921 818452

# Dashing Dusters

- Cleaning and ironing to a high standard
- General domestic assistance
- Commercial cleaning
- Reliable
- Reasonable rates
- References available

01373 832484 (evenings)

**JERRY RAYNER** :  
boiler maintenance

**01985 841461 or 07775 755981**

FOR SERVICING AND BREAKDOWN  
OF OIL BOILERS

also AGA and RAYBURN

- Competitive rates
- Friendly, helpful and efficient
- Call now for a quote



**First Aid & Compliance  
Training Ltd**

**Training for the workplace and home.**

Wide range of accredited  
First Aid, Health & Safety, Fire Safety  
& Food Safety courses

**www.factltd.co.uk**

**T: 01985 302562**





# Whitbourne Chapel

*Train a child in the way he should go... Prov: 22.6*

## Preachers for November

4th Chris Andrews, based at West Lavington Chapel, a contributor to our Chapel News

11th Colin Chapman from Ebenezer Chapel at Melksham

18th Russell Short of Clink Evangelical Chapel,

25th Trevor Brain, based at Ladyfield Chapel, Chippenham (helps us at every Corsley Show)

## Free a child

Our 'class' system in Britain is a flexible one – people can be Upper, Middle or Lower class, but there's movement between all three. In India, it's different; the Hindu class system is largely inflexible, the class you're born in is the one you remain in all your life. For the lowest group in the system, the Dalits or 'Untouchables', there's almost no hope of improvement; they can usually only get menial jobs, earn low pay and have almost no chance of an education.

Chapel Secretary Ray Mead tells me that some years ago, the Dalit leaders contacted Operation Mobilisation to ask for schooling for their children. That's how the Good Shepherd schools came into being, giving the poorest families in India a chance to have their children educated; the youngsters are given uniforms and sometimes meals, to ensure they're strong enough to learn. They're taught English, because English is the language of the law and government, opportunity and advancement. The education is also values-based, emphasising respect for others and for self, and focusing on dignity, freedom and equality. The learning isn't totally free – families pay a minimal fee, to make them part of their child's education process. However, the majority of the education costs are paid for through sponsorship, which is what we at Whitbourne have been doing for a long time.

Our sponsored pupil for a number of years has recently written to us, in a strong clear hand and good English, to tell us his schooling days are done. He's taken his final exams and awaits the results; he hopes to get 65% marks and tells us how grateful he is for the education he's had. We hope and pray he'll go on to college and have a brighter future than his parents.

We also have a letter from our new sponsorship pupil. He's in the early days of his schooling but writes, "Now I am able to make my own sentence in English." He likes learning English grammar, maths, safety and first aid, water and environment studies and tells us he's enjoying every subject. Hopefully, this opportunity for schooling will let him improve his own life, the lives of his family and the lives of his community.

Ray also tells me we can read more about the Dalit people on the internet, if we have access to it. One story on the site mentions a man in a café, who was asked if he was a Dalit and was then told to wash his glass, in case it made a higher-class Hindu 'unclean'. Usually, Dalits are given drinks in small clay cups, which they have to smash when the drink is gone. Ray reminded me that we have just such a clay cup at the Chapel.

Gill Redman

01985 215062

[paradiselost@btinternet.com](mailto:paradiselost@btinternet.com)

## Regular times

**Services** every Sunday morning at 11.00 for about an hour (coffee served at 10.45)

**Chapel Prayer** meeting every Sunday morning from 10.20 - 10.40

**Communion** on the first Sunday of each month at 12 noon for 15 minutes

**Bible study sessions** as announced



## COMPUTER PROBLEMS?

**01373 812804**

Email  
Advice for new users  
Anti-virus defence  
Web sites  
Custom programming

Networks - home & office  
Home tuition  
Web access  
Privacy & security  
Repairs

[www.technojeeves.com](http://www.technojeeves.com)

[info@technojeeves.com](mailto:info@technojeeves.com)



### Local Electrician

All Domestic and Commercial Work Undertaken  
Part "P" Registered NAPIT Approved "Full Scope" Installer  
Fixed Wire Electrical Testing and Thermal Imaging Reports

Portable Appliance Testing

Aico Approved Installer for Fire detection  
Service/Maintenance Contracts Available

Call us on:

01749 850769 or 07779 429786

Email: [ian@fushi-electrical.co.uk](mailto:ian@fushi-electrical.co.uk)

[www.fushi-electrical.co.uk](http://www.fushi-electrical.co.uk)



## E G MARTIN LTD Heating Oil Distributors

Telephone 01373 822784

Victory Road, West Wiltshire Trading Estate  
Westbury, Wiltshire, BA13 4JL

## WESTERN SKIP HIRE

Telephone 01373 813132

Victory Road, West Wiltshire Trading Estate  
Westbury, Wiltshire, BA13 4JL



## Windows, Doors & Conservatories

- Free quotes from our local experts
- Strengthen your home's security
- Reduce your heating bills
- Excellent offers

up to  
**45% OFF**  
selected  
**WINDOWS & DOORS**

**01985 215566**  
[www.newwindowsltd.co.uk](http://www.newwindowsltd.co.uk)

**New  
Windows**



# Cross Keys News

A community Free House



As the nights draw in, why not visit the Cross Keys Corsley and sample their warm welcome. Stephen's creative input ensures a **menu that changes regularly** to make the most of **seasonal and local produce**. All tastes are catered for and if you have any allergies or special requests, please ask when booking your table. We have a **children's menu with freshly-cooked** meals or smaller versions of the standard menu are available.

Have you witnessed the **Cross Kilo Burger Challenge?** – one kilo of prime steak topped with back bacon and cheese, served with giant Spanish onion rings, double-dipped chips and slaw. Finish it in half hour and the chef foots the bill!! You don't have to eat it as a challenge, you can always share one – an amazing family feast! **Must be pre-ordered.**

The **Christmas Menu** is now online – pre-booking is essential. Perfect for family gatherings or work do's, we have a lovely round table in the private dining room to seat up to 12; the Oak Apple Room can cater for parties of up to 75 and, of course, our dining area is available for bookings from 1 to 35. If you would like to book a large group on a Monday or Tuesday please ask us. If we can, we will!

## Future Events

### Sunday 4th November

Bonfire night themed event – see the website or Facebook for more details

### Sunday 25th November

Pub Quiz – teams of up to 6, book by 24th if you'd like chips and nibbles.

### Sunday 2nd December

Live Music from Bare Bones - original songs with a local twist including Corsley Keys 'Where have all the boozers gone', 'Dead maid of Chapmanslade' and many more...

Please check the website

[www.crosskeyscorsley.co.uk](http://www.crosskeyscorsley.co.uk) or our

Facebook page 'Cross Keys Inn Corsley' for details of events, our new menu or contact the pub on 01373 832406.

## New opening hours

### Monday

5.30 pm to 10 pm

(no food served on Monday)

### Tuesday

Closed all day

### Wednesday

5.30 pm to 10 pm

Food served from 6 pm to 9 pm

### Thursday

12 noon to 3 pm and 5.30 pm to 10 pm

Food served from 12 noon to 2.30 pm  
and 6 pm to 9 pm

### Friday and Saturday

12 noon to 3 pm and 5.30 pm to 11 pm

Food served from 12 noon to 2 pm and  
6 pm to 9 pm

### Sunday

12 noon to 10 pm

Food served from 12 noon to 4 pm

# Wren House

Residence for the retired and elderly

Wren House in Warminster is a long-established, elegant retirement home, specialising in individual care in gracious surroundings. Having just thirteen rooms, each with a private bathroom, we are able to offer the ambience of a family home, together with caring staff and the facilities to enable our residents to enjoy their later years with dignity.

Wren House serves fresh, locally-sourced, home-cooked food. Residents enjoy a varied activity programme which includes a gardening club and our own choir.

**Mrs Ellie Simmonds**

Wren House Ltd, 32 Vicarage Street, Warminster, BA12 8JF

Telephone 01985 212578

wrenhousewarminster@hotmail.com

www.wrenhousewarminster.co.uk

## ST DAVIDS WHITSAND BAY CORNWALL



Holiday Let  
Sleeps up to 8  
01373 464870

www.stdavidswhitsand.co.uk



**Joe Ricks**  
Independent Financial Adviser

*Pensions, Retirement Planning, Equity Release,  
Wealth Management, Mortgages, Financial Protection*

07828 860 018 [joe@matherandmurray.co.uk](mailto:joe@matherandmurray.co.uk)

[www.matherandmurray.co.uk](http://www.matherandmurray.co.uk)

## **Paul Ledbury** Quality Painting and Decorating

30 years experience

**INTERIOR AND EXTERIOR  
GENERAL MAINTENANCE**

5 Hampshire Gardens  
Westbury, Wiltshire  
BA13 3EX

**Telephone 01373 858163  
Mobile 07976 242045**

## **TOENAIL CUTTING REFLEXOLOGY**

IN YOUR OWN HOME

ALICE LEWIS

**Telephone 01373 229335**



## Karina

Mobile Hairdresser

Tel. 01373 832823

Mob. 07742 690337

# Your Local Electrical and Property Services

**LAWRENCE  
FAIRFIELD**  
Limited

Professional, reliable & understanding with over 40 years experience

Call or email now for a free quote

**01373 464577**

**enquiries@lawrencefairfield.co.uk**

**www.lawrencefairfield.co.uk**



**allsorts  
OF  
FENCING**

Your local Fencing Specialist

Stock Wire / Post and Rail / Close board  
Decking / Patios / Gates / Sheds / Pergola

[www.allsortsoffencing.com](http://www.allsortsoffencing.com)

**01373 832339 / 07710 180551**

Also: Topping of Fields and Paddocks

## Seasoned Logs

*free local delivery*

Tel / text Garry on 07801 179917

loads from £120

Seasoned hardwood logs within a 15 mile  
radius of Frome. All timber is ethically  
sourced from local woodlands

We can supply hard- and soft-wood  
mixed loads or hardwood only

[www.woodlandworks.co.uk](http://www.woodlandworks.co.uk)



## KB Landscape

30 years in landscaping

Phone

**01373 832371**

Mobile

**07951 297173**

**Kevin Brixey - for quality and experience**

5 Red Cottages Corsley Warminster Wiltshire BA12 7PS

Landscaping  
Patios and paths  
Turfing and seeding  
Brick and stone walling  
Decking and pergolas  
Block paving  
Gravel drives  
Pond work  
Fencing



**A view from over the hedge...**

# Countryside Matters

At last, the good autumn weather has helped farmers to harvest their crops of cereals

Maize, Potatoes and apples (we now have a number of apple Orchards in our locality, and apple juice is a very rewarding product from the fruit).

Almost as soon as the field crops are harvested there is a quick turn around with internal hedges cut, then ploughs or discs are used to get a good tilth, for the next crop to be sown.

Due to the shortage of winter feedstuffs green and winter root crops have been planted where possible to enable cattle to be out wintered, sadly the soil for some of these reseeded crops was so dry that the seeds failed to germinate.

The rain has now come in rather sudden storms but hopefully the water table will soon be back its normal level

Sheep, that will have their lambs early in the New Year are now in lamb, please remember to close gates as you follow the foot paths, and keep dogs on short leads

We were amazed this week while driving along a road at dusk to find about 20 sheep just filing out of a field straight into the beam of our headlights, no one was around and fortunately they turned back through the open field gate which we quickly closed.

November brings concerns especially to dog and horse and pony owners, as fireworks are set off over a period of days (or nights).

Please let the owners of these animals know if you live close by, no-one wants to stop the fun but both dogs and horses can be kept in, where they feel safe and protected if owners are fore-warned.

If larger fireworks disappear onto farmland please check that they are not likely to land on straw ricks or thatched cottages (we have just a few thatched cottages in our villages), also the firework sticks and Chinese lanterns are a real hazard to grazing animals.

Also check your bonfire before lighting it just in case a hedgehog has managed to find its way into your garden.

Strong winds of recent weeks have brought some less common birds onto our shores, so keep an eye on your bird table and trees used as resting and feeding places, but more on that next month.

*Judith Helliar*

**PLEASE NOTE THAT THE  
DEADLINE FOR SUBMISSIONS  
FOR THE JANUARY EDITION OF  
THE BRIDGE IS  
FRIDAY 7TH DECEMBER**



## Corsley Reading Room

## Your 'village hall'

Chairman, Hugh Deed, reports on the latest happenings at the hall

The November Cinema Corsley on Thursday 15th is a WW1 special marking the 100th anniversary of the end of WW1. See the advert in this edition of The Bridge or our website. Buying tickets in advance is recommended.

Following the Wine Tasting in October the next major committee organised event is a Folk Evening on March 16th. A short video of the duo is available on our website and tickets will go on sale early in 2019.

Unfortunately, our application to the Weston Foundation for a major grant to refurbish the Reading Room has not been successful. This one-off opportunity, not unsurprisingly, was many-times oversubscribed. The committee will now look at the individual elements and apply for specific grants for the priority areas.

Full details about the hall and its facilities including how to hire are on the website or call Gill Parkinson (01373 832322) to discuss.

See website [www.corsleyreadingroom.org.uk](http://www.corsleyreadingroom.org.uk)

*Hugh Deed*

*Chairman of Management Committee*

*Chairman@corsleyreadingroom.org.uk or*

*01373 832897*

### Corsley Reading Room Annual General Meeting

The AGM will be held at the Reading Room on Wednesday 7th November at 7.45pm at the Reading Room.  
All are welcome!

### Events run by the Corsley Reading Room Management Committee

Coffee Morning:

*First Tuesday of the month 10 am - 12 noon*

IT Classes/Club: *see our website*

Cinema Corsley: *15th November, 7 pm for 7.30 pm start*

### Regular events run by other organisations

Lite Bites Lunches: *4th Wednesday of the month*

Yoga: *Tuesday and Wednesday evenings*

Pilates: *Tuesday afternoons*

WI: *second Thursday of the month (evening)*

*Committee members include: Vanessa Hyde, Jackie Jasper, Sue Kerfoot, Gill Parkinson, Jenny Ratty, Jill Westgate, David Carruthers.*

# Small ads

£1 for EACH item for sale or wanted (cash only please) - at one of the two drop-off locations)

**Please note: no cash, no advert!**

## FOR SALE

Flymo electric lawnrake for removing moss – £30      01373 832607

## FOR SALE

3-seater brown leather settee by Laura Ashley. Two years' old – cost £2500, selling as new for £1800  
01373 832030 or 07483 212069

## This is a translation of the poster to be found in all French churches:

'By entering this church it may be possible that you hear the 'call of God'. However, it is less probable that He will call you on your mobile. Thank you for turning off your phones. If you want to talk to God, enter, choose a quiet place and talk to Him. If you want to see Him, send Him a text whilst driving.'

## Answers to Bob's Bafflers

- 1 J S Bach
- 2 Jessica Fletcher
- 3 Pottery - Whilst saggar making was a skilled craft, bottom knocking was far less skilled, consisting of beating clay into a metal ring
- 4 Cheshire
- 5 Starlings
- 6 Occidental
- 7 James Callaghan
- 8 Mycroft
- 9 Leatherslade Farm
- 10 The Archers
- 11 Ghana
- 12 They were married!

**PLEASE NOTE THAT THE DEADLINE FOR SUBMISSIONS FOR THE JANUARY EDITION OF THE BRIDGE IS FRIDAY 7TH DECEMBER**

## Local organisation adverts

£2 per month for a small boxed advert or £7.50 for a full page. Full page adverts are allocated depending on space available and cannot be guaranteed. All monies must be at one of the two drop-off locations (Barter's Plant Centre or Acres Supply Garden Centre) by **4pm** on the **19th** of the month. Please note: no cash, no advert!

## Trade advertising

Annual trade advertisements (12 issues, when space is available)

1 space	(69mm wide x 33mm high)	£22.00
2 spaces	(69mm wide x 66mm high)	£42.00
3 spaces	(quarter page - 69mm wide x 100mm high)	£60.00
4 spaces	(138mm wide x 66mm high)	£75.00
6 spaces	(half page - 138mm wide x 100mm high)	£104.00

Trade advertisement material should be supplied in print-ready format, to the chosen standard size and correct shape.

For trade advertising enquiries, please contact David James (Trade advert coordinator/Treasurer) at either thebridge832@gmail.com or 01373 832443.

# Darling Interiors

Made to measure Curtains & Blinds • Bedspreads • Tracks & Poles • Fitting • Competitive Pricing

*Chosen in the comfort of your own home*

Choosing new furnishings has never been simpler. We have an extensive range of exquisite fabrics from leading designers and suppliers to choose from. For the finishing touch, we can provide beautifully crafted tracks and poles from the Bradley range and other leading brands measured to fit different sizes of bay windows and straight windows.

**Call today to book your FREE No Obligation Consultation**



t: 01373 672 359 e: [info@darling-interiors.co.uk](mailto:info@darling-interiors.co.uk) w: [www.darling-interiors.co.uk](http://www.darling-interiors.co.uk)

**cloud**  
homecare

Quality care and  
support in Warminster  
and the surrounding  
villages




**We are a small, Corsley based care provider**

**We provide care to people who need support  
to remain living in their own home**

**Please telephone or email us, or visit our  
website for further details**

Tel. 01373 832 597 enquiries@cloudhomecare.co.uk  
[www.cloudhomecare.co.uk](http://www.cloudhomecare.co.uk)



**Autumn: the perfect  
time to plant bulbs for a  
gorgeous spring display...**

Flowering bulbs  
Bulb planters  
Planting bowls  
Bulb Fibre

01373 832591  
[www.acressupply.com](http://www.acressupply.com)  
[info@acressupply.com](mailto:info@acressupply.com)

*Your local, independent  
garden and aquatic centre  
Open 7 days a week*

Acres Supply  
Corsley  
BA12 7PP

**FG COLLIER**

KITCHENS • BATHROOMS • INTERIORS

WHOLE HOUSE DESIGN & SOLUTIONS



FG COLLIER LTD 29-35 EDWARD STREET WESTBURY WILTSHIRE BA13 3BL  
TEL 01373 822227 EMAIL [INFO@FGCOLLIER.COM](mailto:info@fgcollier.com) WEB [FGCOLLIER.COM](http://FGCOLLIER.COM)