

The Bridge

May 2016



Make merry at the May Fayre, help a heart at the defibrillator sessions, play in the annual cricket match, celebrate with the Festival Choir, help out at the pub, pick some litter, there's lots to do in May...

Castle Care Wessex

Because your home is your castle



CARE IN YOUR OWN HOME

We are a mother and daughter team running a professional, friendly agency specialising in:

24 hour live-in care

Helping loved ones stay in their own home, maintaining their independence.

Domiciliary Care

For short periods of time, perfect for clients who enjoy their independence but appreciate a helping hand.

For more information telephone 01373 836767

email: castlecarewessex@btconnect.com

www.castlecarewessex.com



Frome Heating Specialists

M A Knight

01373 832578

Heating and plumbing engineers specialising in:

Solar heating

Oil and gas boiler servicing

Boiler replacement

Energy management

Pressurised hot water systems

Underfloor heating systems



199876



Family business established 1964

Stavanger, Corsley, Nr Warminster, Wiltshire, BA12 7QL

The Bridge

monthly magazine for the villages of Corsley and Chapmanslade

Articles

Please submit articles either by email to viv.thomas146@btinternet.com or by hand (legible handwriting please!) and take them to the drop-off locations at Barbers Plant Centre, Chapmanslade, or Acres Supply Garden Centre, Corsley by the deadline.

News, reports, updates, thank you's, etc, from individuals or local organisations are free – the more the merrier – keep 'em coming!

File types

Save your files as .doc – please don't send .docx files – I can't always open them successfully.

Advertising

Small ads are £1 for each item whether 'For Sale' or 'Wanted'.

Events/local organisation ads (churches, clubs, playgroups, etc) are £2 per month for a boxed advert.

Full page ads cost £7.50, are subject to space availability and cannot be guaranteed,

If you are advertising, don't forget to take the fee – cash or cheque in a sealed envelope please, to either of the drop-off points (Barbers Plant Centre or Acres Supply).

Please note: no cash, no advert!

Trade advertising

Please see information on the last page.

In this issue...

8 Bob's Bafflers
a cunning quiz

10 Science
biology: changing the world

16 Parish Council briefing
Corsley

Three Open Doors **23**
news from the pews

Corsley WI **28**
news from the ladies

From the potting shed **33**
ready, sow, grow!

36 Parish Council briefing
Chapmanslade

39 News from the Nest
fledgling fun

46 Countryside matters
views from over the hedge

Deadline

**Deadline for articles
or adverts for the next
issue of The Bridge is
4pm 19th May**

**Please note that no
items will be accepted
after this date**

May

Tuesday 3rd

Coffee Morning – 10 am - 12 noon, Corsley Reading Room

Saturday 7th

Corsley litter pick – 10 am, meet opposite the Royal Oak

Cantamus Chamber Choir Spring Concert - a celebration of music and verse – 7.30 pm, St Nicholas Church, Winsley. Tickets from Wiltshire Music Centre 01225 860100. www.cantamuschamberchoir.co.uk

Sunday 8th

Corsley Festival Choir - 'A Royal Celebration' – 7.30pm, St Margaret's Church, Corsley

Thursday 12th

Chapmanslade Parish Council Annual General Meeting – 7.30 pm, **VENUE TO BE CONFIRMED**

Corsley WI – 7.30pm, Corsley Reading Room - Resolutions Meeting and Wine Tasting Evening

Monday 16th

Annual Parish Council Meeting (Corsley) – 7.30 pm, Corsley Reading Room

Thursday 19th

Church and Community Coffee Morning – 10 am - noon, Three Horseshoes Chapmanslade
Bi-monthly Ladies Social Evening – 8 pm, Royal Oak

Saturday 21st

Corsley and Chapmanslade Churches May Fayre – Corsley Manor Farm

Wednesday 25th

Lite Bites Soup Lunch – 12.30 - 1.30 pm, Corsley Reading Rooms

Thursday 26th

Defibrillator Awareness Evening – 6.30 pm onwards, Corsley Reading Room

Sunday 29th

Corsley v Chapmanslade Cricket Match – playing for The Bridge Trophy – 11.30 am onwards at the Corsley Memorial Playing Field

Temporary road closure

Deep Lane (part) to the junction with Cley Hill Lane, to enable BT Openreach to access their apparatus within the carriageway. The closure will be clearly indicated by traffic signs and access will be maintained for residents throughout the works period. Work to commence on **19th May until 7th June**.



Diary Dates

June

Friday 3rd

Keith Hyett instrumental guitar concert – 7.30 pm, Corsley Reading Room

Saturday 4th

Corsley litter pick – 10 am, meet opposite the Royal Oak

Monday 6th

Corsley Parish Council Quarterly Meeting – 7.30 pm, Corsley Reading Room

Tuesday 7th

Coffee Morning – 10 am - 12 noon, Corsley Reading Room

Thursday 9th

Chapmanslade Parish Council – 7.30 pm, Chapmanslade School

Corsley WI – 7.30pm, Corsley Reading Room - 'Norland Nannies'

Saturday 11th

Queen's Birthday Celebration – from 3 pm, Chapmanslade Village Hall

Sunday 12th

Queen's Birthday Party Picnic – 11 am - 3 pm, Corsley Memorial Playing Field

Thursday 16th

Church and Community Coffee Morning – 10 am - noon, Three Horseshoes Chapmanslade

Sunday 26th

Garden Open Day in aid of Dorothy House – 2 -5 pm, Chestnut Cottage, High Street, Chapmanslade

Thursday 30th

Corsley WI – 9.15am - Outing to Sudeley Castle

Corsley litter pickers

We meet opposite the Royal Oak at 10am on the first Saturday of each month. Our next 'pick' is on Saturday 7th May – do come along and help keep our village beautiful.

Cath Aylesbury and Sue Taylor

Garden Open Day in aid of DOROTHY HOUSE

Sunday 26th June 2016

2 pm until 5 pm

Chestnut Cottage, High Street

Chapmanslade, BA13 4AP

Admission by donation

Refreshments Plant Stall

Guitar Concert

with

Keith Hyett

at

Corsley Reading Room

7.30pm, Friday 3rd June

Tickets £6 on the door

or reserve at keith.hyett@btinternet.com



The gentle giant of instrumental guitar music, Keith Hyett, is returning to Corsley Reading Room with a new set of his seductive guitar tunes. If you would like to hear a set of his tunes take a look at his website

**www.keithhyettguitarist.co.uk, or
www.reverbnation.com/keithhyett**

His pieces will take you on a walk through a forest on a moonlit night, to a clearing where there's a panoramic view of the moon and stars. Another piece which, although having a flamenco feel, is very much about a view from a tower on the Cotswold edge where, on a clear day, you can see many counties as well as the Welsh mountains and the Malvern Hills in the distance. There are many pieces which are like this, probably one of his best is a piece called 'The Mill', telling the story of water going through a water mill; it starts in a collecting pool, travels through a channel leading it on to the water-wheel, forwards to a more tranquil life.

Another big influence on Keith is poetry. Keith uses the poetry of Thomas Hardy and other English poets, whose work has given him inspiration for rhythm and melody. The first piece he composed in this way is a piece called 'Timing Her', which has a call and answer feel to it. Like a lot of Keith's music it's quite a moody piece and in the right venue can catch people's imagination and take their breath away.



Pears Electricians

Nigel Charteris - BSc (Hons) M.I.E.T.



Professional Local Electrician

A HIGH STANDARD OF WORK AT REASONABLE RATES

Part P registered with www.napit.org.uk - Testimonials and references available

Faults & Troubleshooting • Repairs & Improvements
Installation Condition Reports • Boiler Wiring

www.pearselectrical.co.uk

01985 213314 or 07717 534026

*Getting married?
Special occasion?*

Classic 1960 Hillman Minx Estate car for hire

Chauffeur ~ bows ~ flowers ~ champagne

Reasonable rates

Please contact Amanda on

01373 827795 or 07720 673698



OAKLEY

GARDEN MACHINERY

Grove Lane, Marston Trading Estate

Frome, BA11 4AT



**For Sales, Spares,
Workshop Service
and Repairs**

Hayter
Mountfield
Lawn King
Westwood
Stihl
Honda
Toro
Echo
Husqvarna
Shindalwa
Oregon
and more...

www.oakleyfrome.co.uk

01373 467712

Bride by Design

Bridal gowns and accessories

2 Silver Street

Warminster

BA12 8PS

Please contact us to arrange an appointment

t. 01985 217216

e. info@BridebyDesign.biz

www.bridebydesign.biz

**STUNNING COASTAL VIEWS ON
CORNISH COAST NEAR LOOE**



Six bedrooms (sleeps 12)

Private access onto beach

Pets allowed

Top class facilities including wi-fi

Rent for week or even long weekend

Downstairs bedroom and shower room

For more info: Sandy Parrish 01373 832522

McCulloch
FURNITURE



Kitchens • Bedrooms • Bathrooms • Libraries
Studies • Media furniture • Offices • Freestanding

The Workshop, Bruton Lane, Upton Noble, Somerset, BA4 6AH
Telephone 01749 850000 Fax 01749 850055 Mobile 07887 892633
enquiries@McCullochfurniture.co.uk
www.McCullochfurniture.co.uk

ORCHARD UPHOLSTERY

RE-UPHOLSTERY OF
ANTIQUE AND MODERN
FURNITURE

❖ FREE ESTIMATES ❖

COLLECTION AND
DELIVERY SERVICE

Telephone Lesley
01373 464870

Sharon's Foot Clinic

SAC Dip FHPT SAC Dip FHPP



Fully insured and highly trained

For the professional treatment of:
Corns • Callus • Cracked Heels
Athletes Foot • Fungal Infections
Thickened Nails • In-growing Nails
Diabetic Foot Care • Verrucas
Nail Cutting • Nail Reconstruction

Contact Sharon on
01373 836734 or 07728 200402

Clinic appointments at
12 Sunny Hill, Nunney, BA11 4ND

Home visits also available



Corsley and Chapmanslade Churches

May Fayrø

2.30 pm Saturday 21st May

Corsley Manor Farm

by kind permission of Claire and Chris da Costa

Cream Teas



Plants ✿ Cakes and produce



Bric-a-brac



Raffle ✿ 50/50 Club Draw



...and much more!

Want to run your own stall? A limited number of pitches available.

Pay us £10 and keep the profit you make or
donate it to your favourite charity.

Contact Phil Jefferson for details (01373 832845)

Bob's bafflers

- 1 Opened in 1864, who designed the Clifton Suspension Bridge?
- 2 In which US State did the Forty Niners flock to try and find gold?
- 3 Which organisation has the motto "Fidelity, Bravery, Integrity"?
- 4 "The Laughing Cavalier" is a notable painting by which artist?
- 5 On TV, which competition did the Slag Brothers, the Anthill Mob and the Gruesome Twosome take part in?
- 6 According to the song, which city is so good that they named it twice?
- 7 The song "June is busting out all over" is from which musical?
- 8 What was the name of the first Harry Potter novel?
- 9 Which country's flag consists of a red circle on a white background?
- 10 Who wrote the poem, later a hymn, "Jerusalem"?
- 11 In which city was the Titanic built?
- 12 Nancy Astor once said to Winston Churchill "If I were your wife, I'd put poison in your coffee" What was his famous reply?

Answers on page 48

Would you know what to do if someone was having a cardiac arrest?
A special invitation to the people of Corsley

Defibrillator Awareness Session

Thursday 26th May
Corsley Reading Room

Demonstrations at 6.30 pm, 7.30 pm and 8 pm
Come! Look! Learn!

*A special warm welcome to the communities of Corsley, Chapmanslade,
Standerwick and Trudoxhill and the sites around Frome where
defibrillators have been provided by the Friends*



Friends of Frome Hospital
Registered Charity 275898

Light refreshments available

UPVC REPAIRS WILTSHIRE.CO.UK

FOR PROFESSIONAL WINDOW & DOOR REPAIRS

Are you having a problem with your UPVC windows or doors?

- ✓ Misted glass
- ✓ Broken or faulty window hinges
- ✓ Faulty locks
- ✓ Jammed windows or doors
- ✓ UPVC door adjustments
- ✓ Window and door handles

Call us – we are here to help

All work guaranteed

01373 430010 07795 143228 www.upvcrepairswiltshire.co.uk

the three horseshoes

The pub Chapmanslade deserves

Open daily from 10am-11pm serving delicious home cooked food (12-3pm & 6-10pm Mon - Sat. All day Sun.) Enjoy a refreshing drink in our beer garden with spectacular views of Longleat and Cley Hill or indulge with one of our regular meals deals by the warm, open fire on a bitter winter's day. We organise monthly events featuring live music, comedy and much more!

Call us on 01373 832 211

Follow us on Facebook for more details.



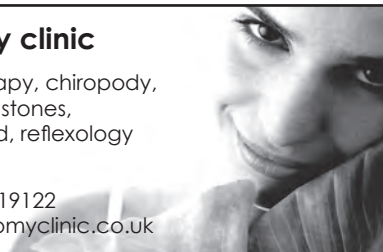
threehorseshoeschapmanslade



anatomy clinic

aromatherapy, chiropody,
facials, hot stones,
indian head, reflexology
threading

tel: 01985 219122
www.anatomyclinic.co.uk



Piano Tuition

All standards welcome

Debbie Rickhuss LLCM BEd

Teacher Pianoforte and Theory

reasonable rates ~ 01373 832829

Biology: changing the world

Why you shouldn't wash your chicken

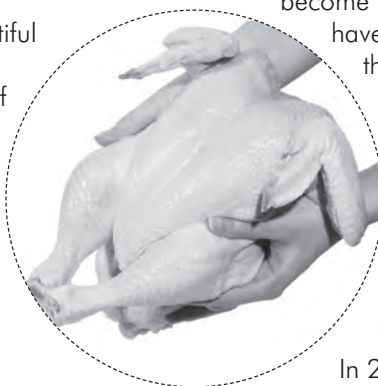
Chicken is one of the most popular meats in the world. It is relatively lean, there are few religious prohibitions to its consumption, and – thanks to modern methods of farming and the breeds of chicken used – it is cheap and in plentiful supply.

However, this cheap and plentiful meat carries a risk. A study in late 2014 showed that 73% of the chickens in the UK were infected with *Campylobacter* bacteria. By the end of 2015 this had been reduced to 59%, thanks to the efforts of producers and retailers to reduce contamination. However, the majority of chickens are still infected.

Campylobacter has no ill-effect on the chickens, but if it is undercooked there is a risk that *Campylobacter* food poisoning may result. Over a quarter of a million people in the UK are estimated to be affected every year, with 80% of these resulting from infected poultry. It is a very unpleasant infection and in the worst cases may be fatal. Children under five and the elderly are most at risk of serious illness. I once invited several senior Environmental Health Officers to a university dinner. A chicken dish was

served, which was slightly undercooked. It was interesting to watch every EHO present push the meat away!

Knowledge that chicken can be contaminated with *Campylobacter* has become more widespread. So, people have become better at following the recommended practice of washing their hands and utensils after handling the raw meat and making sure the chicken is thoroughly cooked. However, sometimes they wash out the chicken carcass before putting it in the roasting dish.



In 2014 the Food Standards Agency ran a campaign to discourage the washing of chicken. European researchers had shown that if chicken is washed, the risk of *Campylobacter* infection increases! The study found that the bacteria present on chicken can travel up to three feet from where the meat was washed – and further if there is significant splashing. Failure to clean these surfaces can result in contamination of other foods, which may not be cooked and food-poisoning may result.

Wash your hands, not the bird!

Nigel Brown is a retired Professor of Microbiology, now living in Chapmanslade. Please send comments, questions and suggestions for future articles to nigelbrown48@gmail.com

Chapmanslade Barn Dance

The Barn Dance held on Saturday 19th March in the Village Hall was a great success. A delicious supper of homemade steak pie (or vegetarian Mediterranean tart), followed by homemade Bakewell sponge with custard was enjoyed so much that a queue formed when seconds were announced. Many thanks to Wendy and her crew.

Supper was followed by lively dancing to the accompaniment of Geoff Elwell and his players. Young and old were soon on the dance floor and the dancing and clapping were quickly being enjoyed by the dancers and spectators alike! The children, as young as seven soon picked up the steps, causing consternation and laughter for the older ones among us, when we had to dip under their arches!

Hopefully a similar event will be held next year!

Christmas Market

**Saturday 19th November
Corsley Reading Room**

The Corsley Reading Room Committee would like to hear from anyone interested in taking a stall at this year's Christmas Market. There's loads of time to get making/crafting lovely things to sell – wooden toys, crafted candles, Christmas cards, funky jewellery – whatever you fancy selling!

Stallholders will be carefully selected to give buyers the widest choice of products possible.

To get ahead of the pack, please contact Vanessa Hyde on 01373 832700.



Stalls cost £10
All profits to the stallholder



Corsley Show 2016

Calling all young people!

There are lots of cash prizes at the Corsley Show this year and if you're 13 or under you will get in for free if you exhibit. Every class has prizes of £1.50, £1 and 50p for 1st, 2nd and 3rd places.

Win £5 from Chapmanslade Motor Services for your digital colour camera print in Class 118. Class 182 – a scarecrow – is worth £10 to the winner. Anyone can enter but it's usually young people who win so why not get your parents to help with this and win a tenner?

If you are 13 or under, there is a prize of £10 for the winner of Class 113 – a bundle of 5 runner beans which will be placed end to end and measured by the Judges. The longest 'run' will take home a £10 note. Barbers are giving this prize and will provide FREE beans for you to plant as soon as possible.

Thank you!

Many thanks to everyone who donated so generously to my recent collection on behalf of Scope in the area of Pedlar's Grove and Forest Walk, Chapmanslade. I have sent them a cheque for £42 – the best amount for a number of years, so again 'thank you'!

Pat Sutton



**Shake off those pounds and
dance yourself fit.**

Chapmanslade Village Hall
Monday 7.30pm - 8.30pm

Longbridge Deverill Village Hall
Thursday 7pm - 8pm

For all levels of fitness and
NO experience needed.

For more information please contact
Amy 07830 119032

Busy Bees Pre-School Chapmanslade



For children aged 2-5 years
Monday, Wednesday, Thursday and Friday
8am - 5pm; Tuesday 8am - 3.30pm
Please contact Kelly Williams to arrange a
visit and a free trial session for your child
Breakfast club and after-school club available.
Term time only

Telephone 07749 257608
busybeespre-school@hotmail.co.uk

FENCING



Garden Fence Company
Garden fencing supplied and erected

- Repairs to existing fences
- Old fencing removed from site
- Hedges cut
- Small trees felled

*For a friendly, cost effective and reliable
service contact Gerald Gasgoigne on:*

07506 373335, 01373 832613
info@wessexgardenfencing.co.uk
www.wessexgardenfencing.co.uk

For your
Heating Oil Supplies
contact

KINCH FUELS

at their
local depot in
Devizes, Wiltshire

Telephone 01380 727102

*The company you and
your home will warm to*



LUXURY PRIVATE CAR HIRE

A locally based, door-to-door, personal
service for up to six passengers in
air conditioned comfort

AIRPORTS • SEAPORTS • ANYWHERE

For bookings, please call
01985 840088 07903 307734

WEST COUNTRY SWEEP

Domestic & Commercial Chimney Services

Andrew Leigh

07545 822109

westcountrysweep@gmail.com





For Expert Tree Care

Telephone Jon Burgess on
01985 214320

Skilled pruning
Tree felling
Stump removal
Qualified and insured

**Free tree health
survey and quotes**

Keep active with physiotherapy

Alison Rossiter MCSP HPC

Chartered Physiotherapist

30 years experience in physiotherapy specialising in the treatment of muscle and joint problems. Helping people to improve their health and fitness through treatment, exercise and advice.

Home visits can be arranged.

Daytime and evening appointments available.

If you need help please contact:

Beckington Physiotherapy 01373 831483

Email: arossiterphysio@gmail.com

www.beckingtonphysio.co.uk

DAVID EDMUNDS & CO
ACCOUNTANTS & TAX CONSULTANTS

Specialists in the self-employed, small and medium business and self assessment. Preparation of accounts, VAT, PAYE, income tax and corporation tax returns.

*Personal, friendly service
Evening appointments by arrangement*

Telephone 01225 334447

Home 01373 832430



**Specialist installers of Macadam
Sports Surfaces with laser technology**

- Tennis courts
- Playgrounds
- Multi-use games areas
- Football, hockey & cricket pitches
- Synthetic grass

7 Whitworth Road
Marston Trading Estate
Frome, BA11 4BY

t. 0845 2416115
m. 07767 401270

colinb@thornburysports.co.uk
www.thornburysports.co.uk

Kevin O'Mahony
Quality Painter and Decorator

Internal and external painting
Artexing
Wallpapering
Coving
Hand painted kitchen units

07724 349447 or 01985 301197
email kevo7743@googlemail.com
www.thewarminsterpainter.co.uk

ALLSOP CARPETS & FLOORING

DOMESTIC ♦ COMMERCIAL ♦ INDUSTRIAL

Christchurch Street West, Frome BA11 1EB

TEL: 01373 463866 MOBILE: 07887 953014

www.allsopcarpets.co.uk

Chapmanslade Village Hall

Can be hired for all your functions:
parties, weddings, meetings, classes, etc

For hiring information, phone
Ken Davies 01373 832034 or email
chapmansladehall@blueyonder.co.uk

KEYVOLUTION

Locksmith and
Carpentry Services
serving the Wiltshire Area

Warminster based company offering locksmith and carpentry.
Police cleared, reliable and honest service.

Any other quote beaten.

- BS3621 lock upgrades for house insurance approval
- Garage doors, locks and running gear
- Lock repairs – specialising in Chubb mortice locks
- Upvc double-glazed door and window locks fitted – even old ones!
- Door or window locks opened destructively or non-destructively (indemnity required for these services)
- Digital code locks supplied and fitted
- All types of carpentry work – mostly 2nd fix and maintenance

Check out my website

www.keyvolution.co.uk



or call Ben on 07748 214799 or 01985 219799

Corsley Reading Rooms

Attractive function hall, smaller meeting room
and kitchen facilities all available for hire

Parties • clubs • meetings • classes • etc

Contact Gill Parkinson for details

01373 832322

www.corsleyreadingroom.org.uk

Hypnotherapy for you!

Solution Focused Hypnotherapy is a safe, practical
therapy and can help you to:

- Feel better about yourself
- Achieve work, play, lifestyle balance
- Improve many areas of your life

Fiona 07801 436633

fiona@balancehypnotherapy.co.uk

www.balancehypnotherapy.co.uk

Balance
Hypnotherapy
Solution Focused Hypnotherapy

White Horse Windows

Windows, Doors, Conservatories and
more...

Local Company, Exceptional Standards
10 year guarantee

Windows Fascia & Guttering
Doors Conservatories

CERTASS Registered

For a Free Quotation call Ryan on
07909 441442 or 01373 302594

SomerSet

SURFACING

Division of
Thornbury Sports

For Roads, Footpaths, Driveways, Car Parks

- Macadam surfacing
- Block paving
- Resin bonded surfacing
- Coloured Macadams

7 Whitworth Road
Marston Trading Estate
Frome, BA11 4BY

t. 0845 2416115
m. 07767 401270

colinb@thornburysports.co.uk
www.thornburysports.co.uk

BARTERS PLANT CENTRE

'Passionate about Plants'

Shrubs ♦ Perennials ♦ Trees ♦ Roses ♦ Conifers
Climbers ♦ Fruit Trees ♦ Hedging ♦ Soft Fruit ♦ Seeds
Bulbs ♦ Basket Plants ♦ Bedding ♦ Vegetable Plants
Christmas Trees ♦ Holly Wreaths
National Garden Gift Tokens



Opening Hours

Mon to Sat	9 - 5	(March to October)
Mon to Sat	9 - 4.30	(November to February)
Sun	10 - 4	(March to June + December)

Just off A36 in Chapmanslade, Wilts, BA13 4AL
01373 832694 www.barters.co.uk



JONATHAN CORP

Painter and Decorator
General House Maintenance
Sturford Mead Farm, Corsley
Warminster, Wiltshire, BA12 7QU
01373 832213

Postlebury News R Gould – Newsagent

All papers and magazines
Home delivery service

01749 850556 07979 452677

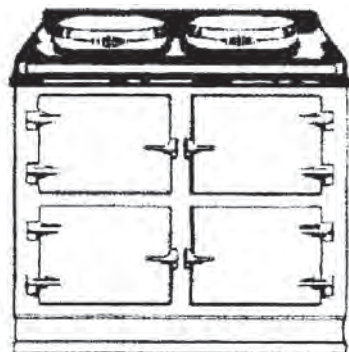


T A P Services

Telephone/Fax 01373 463106

www.tapservices.co.uk

Authorised Stanley Service Agent



Range Cooker Servicing

Corsley Parish Council

Parish Council Briefing

To date, April has been a quiet month for the PC with just a single occasional PC meeting to discuss four planning applications. However, as I write this brief, the rumours about the 2018 Glastonbury Festival and Longleat are just breaking and May could be a little more exciting...

Planning Applications

Four planning applications had been received and the PC had no objections to any of them.

16/2116/FUL

Whitbourne Gate: two storey extension to provide living and dining rooms with bedrooms above.

The proposed extension is at the back of the plot, not overlooking or causing loss of privacy to any other property. Its scale, converting the house from two bedrooms to four, is appropriate to the size of the plot and in line with several other similar recent developments in Corsley. The style of the extension matches the existing house.

16/02558/LBC

The Old Chapel, Lane End: to render external wall with lime and lime wash.

The Old Chapel is a Grade II listed building. The application is for Listed Building Consent (LBC) to replace previously removed render on the SW weather-affected wall. Internal damp is reported to have made the major part of the building uninhabitable and unsaleable since removal of the render by a previous owner.

16/02992/LBC & 16/03123/LBC

Whitbourne Manor: installation of a flue lining and wood burning stove; installation of an oil-fired central heating system.

Whitbourne Manor is Grade II listed building and these two applications cover replacement of an inefficient open fire and electric night storage heaters throughout the house by a modern oil-fired central heating system. Neither of these have any material implications for the features of the house cited in the listing.

Streetscene

There was a Council Highways briefing on 12th April which provided a useful update on the state of contracts and provision of services. Simon Jasper reported on several key points:

Contractors

There will be three, one each dealing with major projects, one on patching and highway repair and the in-house landscape organisation for Parish and Town Council level action. The two new contractors will not be fully operational until October as they need to buy equipment, recruit and train/

re-train employees. As a result the services provided will be reaction based until then, i.e. work will only be done if it is reported on the 'My Wilts' App or Clarence from which it will be prioritised and Parish and Town Councils will be informed.

Parish Stewards

There will be Parish Stewards again – 22 for the county. They will take over the Parish contact role and will liaise directly with the nominated Parish representative. Their capability is at the 'man and a van' level, but their retention is a good sign. How often they will be out in Corsley remains to be seen as 22 is not many for the whole of Wiltshire. Parish Councils have been asked to fill out a priority list of jobs they wish to be completed by the Stewards which Simon will review when the list is received by the Clerk.

Litter

£2.5m will be spent, mainly on A road and town litter picking, with some allocated to B roads.

Gully Emptying

There are 89,000 gullies in the county, the contract is for the clearance of 59,400. The Council is trying to develop a database of which need clearing regularly to target the resource more efficiently.

Rural Verge Cutting

This will take place once a year. Additional cutting will take place to maintain highway visibility when reported.

Road Sweeping

Rural roads will be swept once a year which is a new provision.

Signs

There is a very limited budget and replacement will be limited to where there is a statutory requirement. The intention is to have an allocation in 2017 to catch up.

Broadband

The PC still awaits the outcome of the BT's further investigative feasibility and cost modelling to look at options based on a connection to the fibre at the St Margaret's green box to improve the speeds in other areas of Corsley. The plans for installation of the new box on Deep Lane were reported in April's Bridge.

One unexpected and unwelcome outcome of the broadband presentations at the APM, and previous articles in The Bridge, has been an attempt at a computer scam. A resident in the village received a phone call, purporting to be from a BT employee, asking questions about broadband speeds and offering to assist in measuring the speeds available. The home receiving the call was at the slower end of the village, in terms of internet speed, and the caller, feigning surprise at the slow speed, then offered to help to improve the speed if she was given control of the computer over the internet – this is a method commonly used by remote IT trouble shooters. When this offer was declined, together with any inclination on the part of the caller to provide identification, the latter became angry and was cut off by the call receiver.

The message is that no-one in BT or from anywhere else can improve the basic broadband speed available to a household in Corsley until and unless it is provided with sufficiently close fibre network connection, such as that proposed for Corsley Heath and its environs, or a satellite connection. There are self-help local influences on broadband speed which Hugh Deed elucidated at the APM, and which are in his presentation slides, but, if anyone offers, over the phone, to provide instant solutions, they are lying and are only after your money and control of your computer!

continued...

Old School Playing Field (OSPF)

There are two key developments here. First, the PC has now moved twenty trees from positions restricting access for mowing the Jubilee plantation and these have been re-planted on the eastern side of the site. Second, negotiations are underway with Little Cuckoos for them to fence off an extended area behind the pre-school and around the tennis court for their sole use. Public access to the OSPF will then be at the eastern end of the car park through a re-shaped access.

PC Vacancy

Following the retirement of Mike Bird, the due legal period of notice to allow Parishioners to petition for a by-election has passed and the PC now is now able to co-opt a new member to fill the vacancy. Any individuals who may be interested are requested to contact either myself of John Willcox, 832171.

Longleat and Glastonbury 2018

I am sure by now, that this connection has flooded social media. The Western Daily Press published it under the usual means

of spreading rumours “Longleat refuses to deny...”. I was asked by the Wiltshire Times for a sound-bite, but declined. However, I have asked the Longleat CEO if they do have, now or in the future, any serious aspirations to bring Glastonbury to the parish, to recognise from the outset that there would be a number of issues that the village would likely be very concerned about and might wish to be involved, very early, in any developing plans.

Dates of next meetings

- Annual Parish Council Meeting 16th May
(Election of Chair)
- Quarterly Meeting 6th June
- Quarterly Meeting 5th September
- Quarterly Meeting 5th December

Occasional meetings, at short notice, will also be held to discuss planning applications and other urgent business. Please watch the village notice-boards and the Bridge web site for these.

Neil Britten
Chairman, Corsley Parish Council,
neil.britten@btinternet.com

www.corsleyandthebridge.co.uk

*Introducing the start of a
Bi-monthly Ladies Social Evening at the Royal Oak
Thursday 19th May 8 pm onwards*

All ladies welcome – just a chance for a chat and drink and catch up with those we otherwise only see once a year.

Hope to see you there – bring your friends and neighbours!

Debbie Fraser
01373 832527
debbie.fraser123@btinternet.com

Jackie Jasper
01373 832301
jackiejasper1@hotmail.co.uk



5TH ANNUAL CORSLEY VERSUS CHAPMANSLADE CRICKET MATCH

playing for the Bridge Trophy

Sunday 29th May
Corsley Memorial Playing Field
11.30 start with children's match

Cheering, hollering and whooping encouraged!

Licensed bar, match teas and copious beverages
available for players and spectators

Contact Neil 01373 832314 or Adam 07504 192656

FREE admission – just turn up!

This year will be the 5th Annual Bridge Trophy with Chapmanslade looking to avenge their string of losses and take the trophy back over the river. The match scores have been getting closer each year with the last two only settled in the final over.

These matches are always great fun with a children's match in the morning, followed by a lovely lunch and then the big match in the afternoon punctuated by match teas for all. There is even time for a beer before, during and after the match.

This year's match will have the added benefit of spectators being able to sit under

the new veranda and an improved pitch, thanks to a Lottery grant and the hard work of the Corsley Cricket Club who not only built the veranda but have been working on the wicket since March.

It's always a great day with players and fans who coming over in droves to drink (I mean enjoy!) the traditional village spectacle of leather hitting willow, dodgy umpiring (Richard was never LBW in a million years) and the odd dropped catch.

Please come and join us if you would like to play (everyone will get a game) or just to watch while soaking up the sun!



Clean-it

Recommended by



Carpet and upholstery cleaning specialist

01373 462059 07779 247961 www.clean-it.biz

Home ~ Private ~ Lettings

Garston Veterinary Group



Pleased to meet you
... as long as your kennel cough
vaccination is up to date !

Unfortunately many owners believe that kennel cough
can only be caught by dogs in boarding or breeding
kennels. Dogs are just as likely to contract the disease
from meeting another dog on the street or at any
common walking area.

Symptoms include a loud hacking cough, sneezing and
nasal discharge through to larger infections and in
some cases pneumonia.

You can help to protect your dog with regular kennel cough vaccinations

To help we are offering a 25% discount on Kennel Cough vaccinations for May and June.
If you are a member of our Wellness Plan you will still receive £10 off

For full details please
contact your nearest
Garston Vet Surgery

Frome 01373 452225	Trowbridge 01225 754021	Warminster 01985 213350	Westbury 01373 301448
-----------------------	----------------------------	----------------------------	--------------------------



www.garstonvets.co.uk



Domestic Appliance Spares and Repair Service

Domesticare

Mike, David and Sue Wye
21 Keyford, Frome

01373 467351

Childminder Ofsted registered

Full and part time. Before and after school
Holiday spaces available

Pick-up and drop-off offered

Call 01373 832854 or 07883 025476
d.m.rawlings@outlook.com

JERRY RAYNER : boiler maintenance

01985 841461 or 07775 755981

FOR SERVICING AND BREAKDOWN
OF OIL BOILERS
also AGA and RAYBURN

- Competitive rates
- Friendly, helpful and efficient
- Call now for a quote



STONE & BRICKWORK SPECIALISTS

Tel: 07970 513233
Email: terry@rocketmasonry.co.uk
www.rocketmasonry.co.uk



Longleat Forestry

For all your timber needs, including:

- Firewood logs • Woodchip • Mulch •
- Rustic poles • Coal • Kindling • Saw logs •
- Hardwood • Softwood • Christmas trees •

5% discount for tenants of Longleat Estate

Tel: 01985 213507 Email: forestry@longleat.co.uk
Web: longleat.co.uk/about/forestry

Picket Post, Warminster, BA12 7JS



HER MAJESTY'S 90th BIRTHDAY PARTY PICNIC

JUNE 12 | 11am - 3pm

CORSLEY MEMORIAL PLAYING FIELD

bring your own celebration picnic

FREE ADMISSION

Contact

Barbara 01373 832270 | Isabel 01373 832770
Marion or Neil 01373 832314 | marion@nmc2.co.uk

**You are all invited to join us at the Corsley Memorial Playing Field
for a picnic to celebrate Her Majesty the Queen's 90th birthday**

It will be an informal, free event, just turn up with your own blankets, tables, chairs and picnic!

All of the great facilities at the playing field will be available for everyone to use including boules, croquet and quoits. We may even be able to arrange an informal cricket match and borrow the Corsley Show skittle alley!

Non-alcoholic drinks will be available in the pavilion all day.

You will be able to admire the fabulous new veranda, built free of charge using the skill and expertise of the Cricket Club members with materials funded by a Lottery grant.

We hope to see lots of you there as everyone is most welcome. If you would like to come, but would find it difficult to get here, please let us know and we will arrange transport for you. The pavilion has disabled access, so there are no excuses!

PAINT AND PASTE

Quality with reliability always

Martin Bendle
Painter and Decorator



For FREE estimates
07741 492617

email martin.paintandpaste@gmail.com
www.paintandpaste.co.uk

Cross Keys

Lyes Green, Corsley

Currently closed
Anticipated re-opening
May 2016



Corsley Tennis Club



New members welcome –
all ages, all abilities
Three hard courts available all year
Weekly junior coaching available
Low subscriptions

Contact either
Sue Newell 01373 825560
Rebecca Bennett 07974 796468
www.corsley-tennis.uk



Corsley Cuckoo's Pre-School

Lyes Green, Corsley
(next to the old school)

For children aged 2-5 years
Monday, Wednesday, Thursday and Friday
9 am - 3 pm

Now accepting 2 year-old funding in
accordance with Wiltshire Council guidelines

Term-time mother and toddler group
Tuesday mornings from 10 am to 11.30 am

Contact Hayley McMahon 01373 832298
www.littlecuckoos@hotmail.co.uk



CHRIS SEVIOUR
Building Services

07894 708949

cmseviour@gmail.com

Roofing, Loft conversions,
Extensions, Plastering,
Natural stonework



S B Services



Contact Sean
07828 671566

For your garden maintenance
and home improvements

Three Open Doors

Dear Friends,

As a vicar I am privileged to be invited to accompany people during some of the most important events in their lives; marriage, thanksgiving and baptism for a baby, renewal of marriage vows on an important anniversary, and in the event of death, which will happen to us all one day however much we push it to the back of our minds and pretend it will not.

Last week my son sent me an email with an interesting link entitled 'Wait, but why' that directed me to a web page which laid out the human lifespan visually in the form of a number of grids. So for a 90-year lifespan, firstly there is a little grid, one little shape for each year; actually, when viewed in this way, 90 years doesn't look like much at all. Then the grid is enlarged a little to represent all the months in 90 years, then weeks, then days.

The person who put the website together writes: 'The days chart blows my mind as much as the weeks chart. Each of those dots is only a single Tuesday or Friday or Sunday, but even a lucky person who lives to 90 will have no problem fitting every day in their life on one sheet of paper.' He then goes on to think about measuring life not in units of time but in activities or events. For instance 'I read about five books a year, so even though it feels like I'll read an endless number of books in the future, I actually have to choose only 300 of all the books out there to read and accept that I'll sign off for eternity without knowing what goes on in all the rest.

I read a lot more than five books a year, but still, the sentiment is the same, my life has a given time span and I am never going to read all the books I want in my life time; better get cracking on the good ones then.

All this set me in mind of one of the canticles we use on Monday mornings at Morning Prayer which is taken from Psalm 103 where we read that 'He (God) knows of what we are made; he remembers that we are but dust. Our days are but as grass; we flourish as a flower of the field. For as soon as the wind goes over it, it is gone, and its place shall know it no more.' Nothing like hitting you between the eyeballs on a Monday morning is there.

Perhaps you find the thought that even though people are living longer and longer our given time on this earth is but a drop in the ocean of time and eternity a frightening thought. But if we flip it around actually, the knowledge that our lives are finite can help us focus on what is important, and how we should order our priorities... I don't know about you, but it seems to me that the meaningful relationships we have with those we love should come top of the list. I leave you with another quote:

Priorities matter. Your remaining face time with any person depends largely on where that person falls on your list of life priorities. Make sure this list is set by you—not by unconscious inertia. Quality time matters. If you're in your last 10% of time with someone you love, keep that fact in the front of your mind when you're with them and treat that time as what it actually is: precious.

Love and prayers

Pauline

May Church Diary

Sunday 1st May: Sixth Sunday of Easter

8 am at St Mary the Virgin, Kingston Deverill: 1662 BCP H Communion

9.30 am at St Margaret's, Corsley: Eucharist

10.30 am at St Peter & St Paul's, Longbridge Deverill: Morning Worship



Tuesday 3rd May

7.30 pm – After Alpha Home Group

Details from Richard on 832594



Thursday 5th May: Ascension Day

6 pm at St Peter & St Paul's, Longbridge Deverill: Eucharist



Sunday 8th May: Seventh Sunday of Easter

10.30 am at Rymills Farm, Chapmanslade: Rogation and Patronal Festival

10.30 am at St Mary the Virgin, Kingston Deverill: Eucharist

6 pm at Parsonage Farm, Horningsham: Service for Rogation



Monday 9th May

10.30 am – Time to Think Home Group

Details from Phil on 832845



Sunday 15th May: Pentecost

9 am at St Mary's, Temple, Corsley: 1662 BCP Holy Communion

10.30 am at St Michael the Archangel, Brixton Deverill: Benefice service with Bishop Ed Condry as the President. Refreshments after the service



Tuesday 17th May

Annual Parochial Church Meeting

7.30 pm at St Margaret's, Corsley



Thursday 19th May

Church & Community Coffee Morning

10 am to 12 pm at Three Horseshoes, Chapmanslade

Saturday 21st May
May Fayre and 50/50 Club Summer Draw
2.30 pm at Manor Farm Corsley



Sunday 22nd May: Trinity Sunday
9.30 am at St Philip & St James', Chapmanslade: Eucharist
10.30 am at St Peter & St Paul's, Longbridge Deverill: Eucharist



Monday 23rd May
10.30 am – Time to Think Home Group
Details from Phil on 832845



Wednesday 25th May
Light Bites Bread & Soup Lunch
12.30 pm to 1.30 pm at Corsley Reading Rooms



Sunday 29th May: First Sunday after Trinity
10.30 am at St John the Baptist, Horningsham: Benefice Eucharist



Sunday 5th June: Second Sunday after Trinity
8 am at St Michael the Archangel, Brixton Deverill: 1662 BCP H Communion
9.30 am at St Margaret's, Corsley: Eucharist
10.30 am at St Peter & St Paul's, Longbridge Deverill: Morning Worship

Welcome, Congratulations and Farewells

On April 10th we welcomed into the church family Georgina Greenwood at St John the Baptist, Horningsham, Finlay Wheeler into the church family at St Philip & St James'.

Our thoughts and prayers are with the family of Mrs Eileen Collins whose funeral took place at St Mary the Virgin, Kingston Deverill on April 27th.

Annual Parochial Church Meeting

The Annual Meeting was held on April 19th. The meeting re-elected John Helliard as Churchwarden but sadly Charlie Thackway had to resign as Churchwarden as his new job is taking him all over the UK. The Annual Report was presented and discussed and there was great relief that we seem to have at last managed to balance our income with our expenditure. Our thanks to everyone who supports us financially in the work of our church.

Rural Dean	Rev Pauline Reid revpauline@btinternet.com	01985 841290	
Associate Priest	Rev Di Britten	01373 832515	
Lay Pastoral Assistants	Richard Dean	01373 832594	
	Barbara Hughes	01373 832273	
	Claire Tanner	01985 218099	
Pastoral Visitor	Alan Hopkinson	01373 832393	
Churchwardens	John Helliar	01373 832803	
	Charles Thackway	01373 832048	
Deputy Churchwardens	St Margaret's	Judith Helliar	01373 832803
	St Mary's	Harcourt Gough	01373 832039
	St Philip & St James'	Janet Aylesbury	01373 832752
PCC Secretary	Phil Jefferson	01373 832845	
PCC Minute Secretary	Sue Fear	01373 832074	
PCC Treasurer	Keith Muston	01373 832755	
Planned Giving Officer	Judith Helliar	01373 832803	
Choir Leaders	Marion Muston	01373 832755	
	Claire Tanner	01985 218099	
Tower Captain	Marion Moldon	01373 832672	
50/50 Club	Neil Britten	01373 832515	
Benefice Administrator	Marion Muston cleyhillchurches@gmail.com	01373 839026	

Fundraising

At our Easter Sunday service we gave away £10 to the congregation to take away and use in our 2016 Talents Challenge. Participants will come back to the Harvest services when we will reap the reward of their efforts and raise a significant amount for church funds. Examples from previous challenges are jam-making, cake-making, a Bridge afternoon, car-cleaning, gardening and general help around the house. How will you GROW your Talents to help raise funds for the church and have fun at the same time? If you want to participate in our Talents Challenge please contact Keith Muston.

We are delighted to confirm that our May Fayre on Saturday 21st May will again be held at Manor Farm. Our thanks to Chris and Claire da Costa for allowing us to use their gardens. The 50/50 Club Summer Draw will take place and ten people will be winners of cash prizes, with £200 being the first prize. We need your donations for our stalls and offers of help on the day. Please contact either Stella on 832230 or Phil on 832845 for more details.

**Copy for 3 Open Doors should be sent to Keith Muston at
themustons@btinternet.com subject 3ODs or phone 01373 832755.**

If you would like to receive weekly news of Church events and activities, please send your email address to the above, with subject 'Through the Open Doors' or download a pdf from the 'churches' pages at www.corsleyandthebridge.co.uk



*Individually tailored holidays
for the very best in African travel*

J&C Voyageurs organises individually tailored African holidays for those looking for something special, memorable and away from the crowds. We will incorporate your distinct wishes and aspirations, with no detail overlooked, so that you are able to relax completely.

We have a passion for Africa and conservation of its wildlife, peoples and incomparable scenery. With over 20 years' experience exploring Africa and putting outstanding African holidays together, we can discuss hundreds of safari lodges, camps, beaches and city hotels with first-hand knowledge.

Telephone 01373 832111

Email mail@jandcvoyageurs.com

www.jandcvoyageurs.com



HolidaysNearLongleat.co.uk

A Dedicated website for;

Self Catering, Bed & Breakfast

Guest House, Camping & Caravanning

Accommodation all close to the Longleat Estate

npv plumbing & heating

Installation • Servicing • Repairs

Bathroom and tiling specialists

All plumbing and heating work undertaken

Our fully qualified plumbers offer all general plumbing services from boilers to bathrooms. We will gladly advise clients on the most suitable products for their property – be it heating systems, boilers, radiators, bathrooms or showers.

07738 940355

www.plumbersfrome.co.uk

Hypnotherapy

If you need help with:

Anxiety

Depression

Phobias (such as flying or spiders)

Panic attacks

Relaxation

Weight management

Smoking cessation

Natural childbirth

Confidence

Public speaking

Exam nerves

and much, much more...

Call ANJI HOLLAND on
07944 647 978 / 01373 832 898
to enquire or just for a chat

www.hollandhypnotherapy.com

With practices in Chapmanslade and Bath

I am a member of the National Council for Hypnotherapists
and am bound by their code of practice and ethics

Corsley WI

April News



The meeting of Corsley WI held in April, found members puzzling over the purpose of some very strange 'Objects from the Past', kindly brought in by our speaker, John Girvan. John had a box of unusual items and the evening was organized as a panel game, with four members acting as 'experts to tell us their ideas as to what they thought the item was and if they didn't know, the 'audience' could give their guesses, leading to much hilarity at times! Some things completely baffled members, such as the soap saver, a tube about four inches long with holes in it on the end of a metal rod with a small loop in the end. John explained that in days gone by, the small remnants of bars of soap were pressed into the tube, which could then be swished through the water to make suds, extending the time before a new bar was needed. Members were able to eventually guess the uses of a boot pull, sugar nips, a wine barrel siphon and the fish steamer, but were stumped by the small decorated ball which was a snuff box, the oil lamp chimney cleaner, the bucket retrieving hooks and the ingenious bicycle stand! Jenny Candy gave the vote of thanks for a fascinating evening.

Eileen Hutchings was the winner of the annual draw for a bursary for the cost of a

weekend course at Denman College. The competition this month for an old kitchen utensil was won by Jean White with Mary Purchase second and Charlotte Beswick third.

Val Benbow has made a 90th Birthday card to send to the Queen on behalf of Corsley WI.

There are several new future events for members organised by the Wiltshire Federation and full details are available at the May meeting. The summer outing is to Sudeley Castle, near Cheltenham on Thursday 30th June. If you would like to come with us, please contact Carol Seward on 01373 832446, for details.

At the meeting on 12th May at 7.30 pm, we will be discussing the resolutions to be put forward at the AGM, followed by a Wine Tasting with Waitrose. The competition is for a cheeseboard. Also, donations would be welcomed for a plant stall this month.

If you are new to the area, seeking to make new friends or would just like to hear our speakers, we would love you to join us. Meetings are held on the second Thursday of the month, usually at Corsley Reading Room. The dates and times are listed in The Bridge Diary Dates or you can ring Carol Seward on 01373 832446 for more information.

Everyone is very welcome to join us for the following activities:

Bridge Club	First and third Tuesdays each month, 2-4 pm, Corsley Reading Room
Gardening Club	Third Wednesday each month, venues as per club programme
Lunch Club	Last Tuesday of the month, 12.30 pm, various venues
More details on the Gardening Club and Bridge Club from Pauline on 01985 215760	

Corsley Festival Choir
presents

A Royal Celebration



in honour of
Her Majesty The Queen's 90th Birthday

7.30 pm on Sunday 8th May 2016

at St. Margaret's Church, Corsley

BA12 7QE

Featuring

Mozart Coronation Mass

Zadok the Priest

Last Night of the Proms favourites

Tickets: £12.50 (Children £5.00)
from choir members or phone 01373 836866

Wine Bar opens at 7.00 pm

Bridesmaids of the world unite and help cast off the ancestral ghosties!

Saturday 6th August 2016
Manor Farm, Corsley, BA12 7QE

the Elizabethan Evening comes over all
Cornwellian and a bit seasidey...

The Elizabethan Evening 2016 will be presenting
‘Ruddigore’

by Messrs Gilbert and Sullivan

to be performed by the outstanding Illyria theatre company

Spectral portraits, worried heirs and bridesmaids to boot, what more fun could you possibly think of having on a warm August Saturday evening in Corsley? (or Corsets as my spell-checker keeps prompting). So, combine both and come in your Corsley Corsets!

Food, drink costumes and far more besides, await our regular clientele and those who have yet to experience the wonders of the Elizabethan Evening at Corsley's Manor Farm. In fact Churchill was once overheard saying "the world is divided into those that have been to the Elizabethan Evening and those that have not".

The Corsley foreplayers will once again be preceding the evening's professional entertainment with a scurrilous, and thankfully brief, ensemble piece the likes of which the world is yet to know or understand.

The Inn of the Fallen Woman will be open to slake the throats of young bucks and bridesmaids all and, fear nought for rumbling tums, for in the hallowed sanctities of Corsley kitchens, preparation and experimentations of great daring are already well advanced for a repast of great nourishment and splendiferous display.

So book the date and be prepared to ring Clare on 01373 832113 for further ticket and supper information.

Your humble and flagging casting couch manager

Karen BeeBee brings us...

Cross Keys update

Community purchase progress

Another month of hard work by an initial team of investors and volunteers means that by the time you read this, we will have completed on the purchase of The Cross Keys and work will have begun on ensuring the pub is fully compliant with health and safety regulations and on refreshing its appearance.

Graham Watts is in charge of the refurbishment project using skilled labour, but volunteers are always welcome for other jobs; it's a great way to meet friends and neighbours and make a real difference in the improvement programme on our community pub. Everyone has something they can offer, be that skilled labour, help

with gardening, painting or even making tea for the team. Gill Sorisi is coordinating the times when people are available, together with their skills. If you would like to help, please contact Gill Sorisi on 01373 832668 or gillsorisi@hotmail.co.uk to let her know if you would like to help.

Enterprise Investment Scheme

We have had confirmation of approval of the Enterprise Investment Scheme which can offer significant tax advantages to investors providing certain criteria are met:

- Income tax relief at 30%
- Capital gains tax exemption
- Free from inheritance tax.



To find out about investing, please contact Alan Hutton at adhutton@btinternet.com. The minimum investment is £250 which buys 25 £10 shares.

Finally, we don't have an opening date yet, but please check the website www.crosskeyscorsley.co.uk for up-to-date news on progress. Our target is to open for business towards the end of May.

We look forward to seeing you all in the pub soon!

Please remember that the value of investments can go down as well as up

Chapmanslade Motor Services

**Vehicle repair
and servicing**

**Brake
specialist**

**MOT preparation
and repairs**



**Batteries
Exhausts
Tyres**



Quality service at competitive rates

FREE ~ wheel balancing and tracking with new tyres

FREE ~ courtesy car

Electronic diagnostics available – most makes covered

Green Farm Industrial Estate, Chapmanslade

01373 832188 or 07711 256927

**Busy
Bees**



01373 455911

SPECIALISTS IN CLEANING & GARDEN MAINTENANCE

Our services include:

**Domestic Cleaning
Commercial Cleaning
Carpet/Upholstery Cleaning
One-off spring cleans
Trauma Cleaning
Builders' Clean
Garden Maintenance
House and Garden Clearance**

Amy: 07971 921651 or Caron: 07971 921617

E-mail: info@busybees2000.co.uk



www.buzzybees2000.co.uk



JOHN E S JONES

**GENERAL
BUILDER**



Carpentry, painting and
decorating, extensions, uPVC,
facias and gutters, fencing,
decking and patios

Also general repairs

Telephone 01373 832600

Mobile 07074 832600

Ready, sow, grow!

It's a lovely feeling knowing that the food you're eating has been home grown with your own time and effort dedicated towards it. So I have some tips, tricks and ideas to ensure that none of your efforts go to waste!

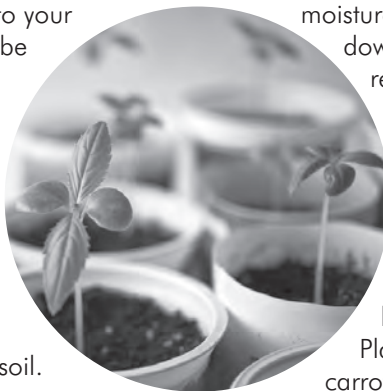
Firstly, it's important to remember that soil is everything when trying to grow your own vegetables. If you don't care to your soil first, your efforts may not be rewarded. Ensure that all soil is well dug over, drained, fed and also consider testing your soil to find out exactly what's in it. Lime is something to check – if you haven't added garden lime to your soil in around four years it's well worth adding some as this will sweeten the soil.

Secondly, sunlight is essential, so a south facing plot would be ideal. However, if you're tight for space, do something a little different and grow your vegetables in a window box, or even an old tyre or boot.

Deciding what to grow is the next task and my tip here is to communicate with your kitchen. Grow things you know that you will use: take a trip to the supermarket and see what vegetables are most expensive and try growing those – courgettes are a good example. Try growing more unusual vegetables such as asparagus, or consider something easy like tomatoes – there are hundreds of varieties, some grown for yield, some for colour or size.

When growing vegetables such as potatoes or runner beans, manure or organic

compost is key. You could use lawn cuttings as a mulch for your runner beans as moisture is essential – when rotting down, the lawn cuttings will release lots of it!



It's also important to think about what you plant each of your vegetables with. Companion planting is a great and natural way to aid your vegetables and also keep unwanted pests away.

Planting garlic around your carrots is a good way to keep pests and flies away and planting marigolds by your tomatoes will repel whitefly and aphids.

Finally, you'll need to keep the slugs away. Although slug pellets do keep the slugs from eating the young and tender leaves, why not try a Slug Pub? Take an old bottle and cut off the top, then plant it into the ground. Fill it with some beer so that the slugs can make their way into the bowl and have a drink – they'll be unable to leave because they've enjoyed one too many!

With a bit of sunlight, a companion and a slug pub, your vegetables will be well on their way to your plate where all your efforts can be enjoyed.

Kaylee Evans
Acres Supply Garden Centre, Corsley

TEA & sympathy

Considerate catering at a difficult time

All our food is homemade, we provide delicious teas, sandwiches and cakes through to more elaborate options.

We offer a truly bespoke, caring and professional service.



Telephone Kim Clark on 01373 832151 or 07843 056916

e-mail kim@teaandsympathy.uk.com

www.teaandsympathy.uk.com

CHANTRY CONSTRUCTION

stone walling • patios

drives • extensions

prompt reliable service

mini digger and driver for hire

01373 836787 07855 343388

COMPUTER & LAPTOP REPAIRS
UPGRADES / SYSTEMS & LAPTOPS

VIRUS REMOVAL / BROADBAND
WIRELESS / NETWORKING



FAST, FRIENDLY, PROFESSIONAL SERVICE
COMPETITIVE RATES
ONSITE OR WORKSHOP

CCO CompTIA

call
01373 302901

www.ntscomputing.co.uk
help@ntscomputing.co.uk

LAPTOP REPAIRS

We also replace
laptop screens,
keyboards,
CD-DVD drives,
fix overheating
and more

Forget-me-not

• GARDENING SERVICE •



Weeding, pruning, planting,
fence painting, etc

01373 464416

07890 850465

Do you need a plumber? Call...



Paul Antell Plumbing

07890 366832

01373 467427

Professional, reliable, friendly and local
paulantellplumbing@talktalk.net
www.paulantellplumbing.co.uk

Offices to Let Corsley



- Historic country house setting
- Excellent working environment
- Ample parking

Call 01373 832120

EVERGREEN GARDEN SERVICES

Garden maintenance and landscaping,
lawns, strimming, hedging, pruning
long and short term maintenance,
patios fencing, turf and seeding.

Over 20 years experience in
horticulture, landscaping and estate
management.

Contact Ben Hale

01373 825495

07879 492283



Rose Knight

House sitting and
dog and cat minding
service

01373 464904

07773 435254

knight_rosemary@sky.com



Darch Oil BOILER SERVICING & REPAIR

www.darchoil.com

We service and repair oil fired boilers.
All of our technicians are OFTEC registered and approved.
Call us on **01935 473302** for an instant quote or
visit www.darchoil.com and fill out the form and one of
our team will call you back during office hours.

Call us on **01935 473302** or email info@darchoil.co.uk for more information

James, Rob and Adam former Employees of
ROGER PATCH LIMITED

Are pleased to introduce:-

CMP COMPLETE LIMITED
GENERAL BUILDERS

19 Swaledale Road, Warminster, BA12 8FH

Contact James: 07801 868288

Email: cmpcompleteltd@gmail.com

Chapmanslade Parish Council

Parish Council Briefing

Phil Jefferson reports on the parish council’s activities in April

The parish council has met twice since my last report, on 23rd March and 14th April. The Annual Parish Meeting was also held on 14th April.

23rd March

Bus services – use them or lose them

Wiltshire Council has been carrying out a public consultation on the county’s bus services. They spend over £5 million each year subsidising uneconomic services and are looking for savings of around £2.5 million from the current year’s budget. The frequency of our main service, the no 58 which operates between Frome and Westbury, is at risk of being seriously reduced. Currently there are five buses each day on weekdays: this is likely to be reduced to two. We decided to inform Wiltshire of the importance of the service to our community and that with only two or three buses a day the service would be completely unviable. The message seems to be use it or lose it, but perhaps it’s already too late to save the service.

We felt we should also promote our bus services within our community so here’s a copy of the timetable for Chapmanslade, which you might find useful:-

Service 53 operates Mondays to Fridays
Service 58 operates Mondays to Saturdays

Monday to Frida

	X58	53	58	58	58	58
Frome	7.20	7.14	8.55	11.55	13.55	17.10
Chapmanslade	7.31	7.52	9.06	12.06	14.06	17.20
Westbury	7.52	-	9.27	12.27	14.27	17.38
Warminster	-	8.16	-	-	-	-

	58	58	58	53	58	58
Warminster	-	-	-	15.05	-	-
Westbury	9.40	12.00	14.00	-	17.13	17.40
Chapmanslade	10.02	12.22	14.22	15.27	17.35	18.00
Frome	10.12	12.32	14.30	15.40	17.45	18.10

Saturday

	58	58	58	58
Frome	8.00	8.55	10.55	12.55
Chapmanslade	8.11	9.06	11.06	1.06
Westbury	8.32	9.27	11.27	1.27

	58	58	58	58
Westbury	9.08	11.00	13.00	17.05
Chapmanslade	9.30	11.22	13.22	17.25
Frome	9.40	11.32	13.32	17.35

14th April

Annual Parish Meeting

There was a disappointing turnout at the Annual Parish Meeting, which is an opportunity for parish residents to raise concerns and issues. Perhaps the fact that few people were there was confirmation that residents are confident that the parish council is doing its best for the community?

In our Annual Report we reviewed a busy year: 12 meetings, 15 planning applications, but most of all dominated by the proposed Barbers Farm development, the proposals for Thoulstone and the long-running saga of Sienna's Valley. Road safety, the weight restriction on the A3098 and speeding were also included in the issues covered.

A copy of the report is available on the village website, which has recently been refreshed with lots of new content. One new feature is about our fabulous network of public footpaths. Do make sure you check it out. And why not make our website your home page on your computer or tablet? That would be a helpful way of promoting our village community.

As you know, Chapmanslade has a distinguished cricketing history and one of the reminders of this is an impressive silver

cup, which has a temporary (but long-standing) home lodging with one of our parish councillors. We wondered where we could display this cup so that it could serve as an incentive to our present-day team as they practise for the annual battle with our friends from the other village. Do let us know if you have any ideas.

Parish Council Meeting

Planning Applications

16/02791/FUL

Proposed rear two storey extension and single storey extension, 72 High Street.

We agreed to support the application, which would bring an important property in the centre of the village up to date.

16/02872/LBC and 16/02522/FUL

Reversion of The Retreat/82 High Street, from a single to two dwellings with associated car parking. Erection of carport and pool building.

82 High Street is a listed building in a prominent position in the High Street. Again, we agreed to support the application, which would restore the property into the original two properties.

14/09400/FUL Sienna's Valley.

As I mentioned last month, the appeals concerning the static caravan at Sienna's

Valley in Huntenhull Lane were considered by a Government planning inspector at a hearing held at the Civic Centre in Trowbridge on Tuesday 15th March. The inspector announced his decision on 6th April and turned down the appeals. He based his decision largely on the detrimental effect the mobile home and its paraphernalia has on an important part of our village landscape – a Special Landscape Area. The owner now has twelve months to remove the building and all that goes with it and restore the land to its original profile.

Highways

We learned about the new contract Wiltshire Council has with Ringway, following the termination of the Balfour Beatty contract. The Parish Steward system will shortly be resumed, which should be of benefit to us as we can point out small jobs that need doing. To report a highways defect it is advisable to use the 'Wiltshire app' via your computer or smart phone. Keith Muston is our parish council link person. You can contact him at

themustons@btinternet.com or on 832755 to raise any particular highways concerns.

Emergency Services

We were concerned to learn that an ambulance was not available when a 999 call was made from the village and the patient's partner had to drive him to the RUH. We have written to the ambulance service to seek an explanation.

Next meeting

Our next scheduled parish council meeting is due to be held on Thursday 12th May. We will confirm the venue later. This will be our Annual General Meeting, at which we elect our officers for the coming year. Among the items we will consider will be a suggestion that we start work on a village plan. Do come along to the meeting if you can, to speak or maybe just to listen.

Phil Jefferson
01373 832845
phil.jefferson@virgin.net

www.chapmanslade.org.uk

Piano Exam Successes!

The following pupils of Debbie Rickhuss have achieved Associated Board of the Royal Schools of Music exams

Bonnie Anderson	Prep test
Jamue Holmes	Grade 1
Tristan Dowling	Grade 1 with distinction
George Kyriakides	Grade 2
Jonathan Roberts	Grade 3 with distinction
Sarah Paul	Grade 5
Georgia Lawrence	Grade 7

Congratulations to you all!

Debbie Rickhuss 01373 832 829
rickhuss@tiscali.co.uk
07747 499990



News from the Nest

Welcome to this month's news from
Corsley Cuckoo's PreSchool in Lyes Green, Corsley.

What a difference a day makes!

Little Cuckoos fortunately held their annual Easter Faye on Good Friday – it certainly was good, the weather was beautiful – the day before had seen torrential rain!

Over 100 children and parents enjoyed a fun-filled morning of crafts and a Easter joke-themed hunt. We were also joined by Olly Octopus from Fusion Leisure Frome, throwing high fives in all directions. We are delighted to report that we raised over £400 all of which will go towards maintenance and new equipment at Cuckoos. We would like to thank everyone who supported us with generous donations of raffle prizes (including a meal from The Royal Oak) and it was lovely to see some new faces and previous Little Cuckoos .

We would also like to thank the kind villager (I am afraid we don't know your name – tall gent with a collie dog) who every year generously gives us money towards the children and Easter eggs, your thoughtful contribution is really appreciated.

Parents and toddlers

On Tuesdays the Nest hosts the parents and toddlers session. Parents and children from Corsley, Chapmanslade, Warminster and Frome are now attending our friendly little group. Although it's called the 'toddler' group we aim to be inclusive for all children up to school age. We've had children as young as five weeks attending, right up to 4 years.

Each week we involve the children in a different kind of activity; painting, cutting and sticking, crafting, biscuit decorating, etc. We often do themed activities for Easter, Christmas, Valentine's Day, etc. The activities are optional – parents and children can choose to do whichever activity they like or even just play with the toys. When the weather is good we encourage the children and parents to play outside. Tea and coffee is available allowing the parents to chat whilst the children play. We ask for a £1.50 donation per family which covers expenses and contributes a small donation to the preschool.

For further information on joining us, please contact Emily Edwards, Toddler Group Leader at emilyjedwards@hotmail.com

This term, as we'll be looking at traditional stories, starting with 'Jack and the Beanstalk', the children will be planting beans! Perhaps they will be good enough for an entry at the Corsley Show!!

Term-time opening hours: Monday, Wednesday, Thursday and Friday 9 am - 3 pm

Term-time Mother and toddler group: Tuesday 10 am - 11.30 am

For more information, please contact us on 01373 832298

www.littlecuckoos@hotmail.co.uk

Steve Dayman-Johns

Driving Instructor

Condensed Courses and
Gift Vouchers available

Tel 01373 865422 - Mob 07730 445648

email stevekdj@gmail.com



Cost-effective, no-nonsense, efficient accounting, bookkeeping, VAT, payroll and CIS solutions for sole traders and Limited Companies.

Self-assessment and taxation services also available.

- ▶ Fixed fees agreed in advance
- ▶ Free initial consultation
- ▶ Westbury office with free parking

Contact Jackie Welch

01373 822363 or 07790 325321

jackie@jmwaccounting.co.uk

www.jmwaccounting.co.uk

Dashing Dusters

- Cleaning and ironing to a high standard
- General domestic assistance
- Commercial cleaning
- Reliable
- Reasonable rates
- References available

01373 832484 (evenings)

M W Garden Services

20+ years experience

A tailor made service for all types of garden maintenance

Insured and CBI's checked

mark22.weaver@mypostoffice.co.uk

Telephone 01373 832854

Mobile 07921 818452

Precious Paws Grooming Studio



Luxurious mobile grooming
service for cats and dogs

Grooming, Bathing, Handstripping, Clipping
and Microchipping *City & Guilds Qualified*

Contact Alison on

07887 721418 or 01985 510115

Hardwood logs for sale

(cut to size if required)

FREE DELIVERY

R M Log Supplies

Beckington

Call Robin on

07876 621929

Ski Apartment – French Alps

Ski in/ski out – sleeps 6

Well equipped – immaculate condition

For more information or to book online visit:

w. www.ski-les-cimes.co.uk

f. facebook.com/ski.les.cimes

e. lesleygolledge@gmail.com

t. 01373 832533

Help with Rendell family tree...

I'm doing a bit of research into my family history before it's too late to tell children and grandchildren about all the characters in those old family photographs. I have done my best on the internet, read 'Life in an English Village' but, as yet, have not come up with the Rendell family connection from Corsley.

My father was Harold Burr, son of Norman Burr, son of James Burr and Sarah Rendell who died on 30th April 1937 aged 79, at 'The Laurels', Dertford, Corsley.

My father's mother died young, so he was latterly brought up by Sarah Burr (nee Rendell), but, sadly, my Father died young too so it's a bit of a mystery-tour trying to link up all the folk on the family tree! Amongst all the paperwork one is often gifted with I have Sarah's Will, which sees her in possession of quite a tidy sum of money, which I am assuming, since her own husband also died aged 47, was from the Rendell family, though I cannot find what it was they did in Corsley to make that possible.

I am aware both of the Rendell connection to The Ship at Frome and to the family at Longleat and would love to know more if you can think of anyone in the parish who might share such an interest!

Judy Westwood (nee Burr)
judy.westwood@ntlworld.com

Whitbourne Chapel

'He maketh the storm a calm, so that the waves thereof are still.'
Psalms 107:29

Progress?

A faithful man in days of yore
Hand pumped the organ – what a chore!
Up and down, puff and blow,
Hymns loud and soft, quick, quick, slow.
But now a sound system's in place
Computer with a splash of grace?
This modern gadget, sweet of tone
Can be operated by a phone...

Regular times

Services every Sunday morning at 11.00 for about an hour (coffee served at 10.45)

Chapel Prayer meeting every Sunday morning from 10.20 - 10.40

Communion on the first Sunday of each month at 12 noon for 15 minutes



COMPUTER PROBLEMS?

01373 812804

Email
Advice for new users
Anti-virus defence
Web sites
Custom programming

Networks - home & office
Home tuition
Web access
Privacy & security
Repairs

www.technojeeves.com

info@technojeeves.com

No Job Too Small



Local Electrician

Part "P" registered NAPIT approved
Domestic and Commercial Work Undertaken
Third Party Testing

Call for a Free no obligation Quotation

Tel: 01749 850769

Mobile: 07779 429786

email:

ian@fushi-electrical.co.uk

www.fushi-electrical.co.uk



E G MARTIN LTD Heating Oil Distributors

Telephone 01373 822784

Victory Road, West Wiltshire Trading Estate
Westbury, Wiltshire, BA13 4JL

WESTERN SKIP HIRE

Telephone 01373 865247

Victory Road, West Wiltshire Trading Estate
Westbury, Wiltshire, BA13 4JL



Windows, Doors & Conservatories

- Free quotes from our local experts
- Strengthen your home's security
- Reduce your heating bills
- Excellent offers

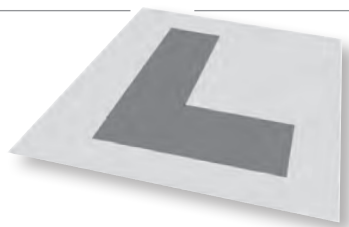


01985 215566
www.newwindowsltd.co.uk

**New
Windows**



Tales from the passenger seat



I was asked the other day when would be the best time for a learner-driver to go out in the family car. I occasionally have a parent who is concerned that their son or daughter has had a go at driving before they have their first lesson with me. This is probably the most dangerous time for learners and not necessary; it's actually far better to let me do the basics and only then start to go out in the family car. Also, leaving practise in the family car until just before the test is by then much too late to be of much value. It may help a bit, but to be honest the most productive and useful time is in the first half of a pupil learning to drive, during which I have shown and covered everything; at that stage as much practise in the family car to enable muscle memory and core competence to kick in is *extremely* productive and can measurably save money.

I recall Gillian who, at the time, had done 19 reverse lefts with me and, whilst improving, was struggling more than most. She told me she was being insured to drive her Mum's car at the weekend. So I pointed out five corners where we had been practising and suggested she did five reverse lefts on each corner and then later in the week do the same again. She duly did, and when I met her the following lesson she had done fifty reverse lefts! A magnificent improvement and she saved herself lesson money, allowing me to focus on other things to learn.

Any reader who has taken their offspring out in the family car will already be well aware that other road users have an 'interesting' attitude towards learners. They are either extremely thoughtful, or completely the opposite – "all learners drive at four miles per hour and must therefore be overtaken in the most incredibly ridiculous places".

It was Gillian I was teaching, and she was doing 30 mph in a 30 mph zone, fine, except that driver in a Reliant Robin (which must have been fuelled by water) was desperate to overtake us, pulled out from behind but didn't have the requisite power so spent the next couple of hundred yards or so about four car lengths behind, on the wrong side of the road, matching our speed... Had he come alongside us, then for safety's sake we would have needed to slow down to about 20 mph to let him by, but he never got near us at all. He finally gave up when the gradient marginally increased and cars behind became equally puzzled as to why he was slowing down, remaining on the wrong side of the road, and nearly causing them to undertake him!

Steve Dayman-Johns

TOENAIL CUTTING REFLEXOLOGY

IN YOUR OWN HOME

ALICE LEWIS

Telephone 01373 228010

NEED HELP WITH YOUR GARDEN?

Hedge cutting • Lawn mowing
Strimming • General gardening

Call Rob Clements

Tel 01373 832683 Mob 07586 337118

Wren House

Residence for the retired and elderly

Wren House in Warminster is a long-established, elegant retirement home, specialising in individual care in gracious surroundings. Having just thirteen rooms, each with a private bathroom, we are able to offer the ambience of a family home, together with caring staff and the facilities to enable our residents to enjoy their later years with dignity.

Wren House serves fresh, locally-sourced, home-cooked food. Residents enjoy a varied activity programme which includes a gardening club and our own choir.

Mrs Ellie Simmonds

Wren House Ltd, 32 Vicarage Street, Warminster, BA12 8JF

Telephone 01985 212578

wrenhousewarminster@hotmail.com

www.wrenhousewarminster.co.uk

ST DAVIDS WHITSAND BAY CORNWALL



Holiday Let
Sleeps up to 8
01373 464870

www.stdavidswhitsand.co.uk



Kevin Knight Clock & Watch Repairs

Over 30 years' experience
All clock and watch repairs
undertaken. Free estimates.

All work guaranteed

01722 331969 or 07900 928451
email kevindavidknight@gmail.com

Paul Ledbury Quality Painting and Decorating

30 years experience

INTERIOR AND EXTERIOR
GENERAL MAINTENANCE

5 Hampshire Gardens
Westbury, Wiltshire
BA13 3EX

Telephone 01373 858163
Mobile 07976 242045

CLARION

electrical

Part P registered & guaranteed



Making household electrical circuits work safely

clarionelectrical@btinternet.com

*Fifteen
years in
the trade*

01985 216641 07766 355237

BUTTONS BY BETHAN

I make beautiful, personalised,
handmade gifts for all occasions

t. 01373 832128 m. 07968 363271

e. buttonsbybethan@hotmail.com

Etsy Shop. www.buttonsbybethan.etsy.com

www.facebook.com/buttonsbybethan

Allsorts of Fencing

Peter Allsop

allsortsoffencing.co.uk

All types of domestic and agricultural
fencing supplied and erected

Also:

- Decking and patios
- Sheds, pergolas and archways
- Topping of fields and paddocks

Allsorts-of-fencing@hotmail.co.uk

01373 832339

07710 180551

Black Dog Farm Bed & Breakfast



You will find a friendly welcome and a
hearty breakfast in our listed Georgian
Farmhouse. The quality en-suite bedrooms
contain everything you need to ensure a
comfortable stay.

Lyn and Fraser Mills

01373 832858 or 07878 954563

Black Dog Farm, Chapmanslade,
Wiltshire, BA13 4AE

www.blackdogfarm.co.uk

DAVID NOBLE

APPROVED ELECTRICAL CONTRACTOR

- Complete installations
- Minor works/repairs
- Testing
- Intruder alarms
- Lighting design



5 Swaledale Road
Warminster, Wiltshire
BA12 8FH

Tel 01985 214630
Mobile 07970 618232
dcnoble@btinternet.com



KB Landscape

30 years in landscaping

Phone

01373 832371

Mobile

07951 297173

Kevin Brixey - for quality and experience

5 Red Cottages Corsley Warminster Wiltshire BA12 7PS

Landscaping
Patios and paths
Turfing and seeding
Brick and stone walling
Decking and pergolas
Block paving
Gravel drives
Pond work
Fencing

A view from over the hedge...

Countryside Matters

May – what a fantastic time of year, all the different greens from the new leaves, bluebells in the woods, the swallows are back and let's hope we hear the cuckoo this year

The farm animals have appeared in the fields again after their winter in the farm buildings where they were protected from the weather.

At the time of writing this piece I have just been for the morning walk with the dog on a beautiful sunny day with amazing views over our English countryside from the ridge above the old Corsley school. While on the walk I noticed in the heavy dew the nocturnal wanderings of animals particularly badgers and there appears to be a lot of them about. They are also busy freshening up their setts by digging the old ones out or even digging new ones. I was also joined on this walk for a few seconds by a red kite. These impressive birds of prey just glide along and apparently can travel many miles in search of food. They were once rare and threatened but are now making a comeback. They can be distinguished from buzzards by their forked tail and slightly swept back wings so keep an eye out for this graceful bird.

Unfortunately, other less welcome creatures start appearing at this time of year as well. Ticks, which are members of the spider family, transmit Lyme disease to dogs, humans and many other diseases to cattle, sheep, deer and cats. Ticks are blood suckers and need to feed as the weather warms up. They sit on long grass and undergrowth waiting for any warm-blooded animal to pass by. They then crawl onto

the animal and start sucking blood; it is during this process that they will transmit the bacteria that can cause disease. Lyme disease can be very nasty to both humans and dogs. Cattle can suffer from several diseases transmitted by ticks such as 'Red Water Fever'; the cattle produce red urine while they are suffering from the disease which is often fatal to them.

At this time of year and through the summer you should check your dog, cat, cows and sheep regularly for ticks, removing them as quickly as possible with special forceps. Don't just pull them off as this can leave the tick's head buried in the animal's skin where it will cause infection. Alternatively, you can use various chemical products and collars to stop the ticks getting on the animal in the first place.

May is also the time of year when farmers will be making silage which is a way of preserving the grass so that it can be stored either in large pits or bales wrapped in plastic and used as a feed for the farm animals during the winter. In order to get the best quality silage the farmers have been out preparing the fields since it stopped raining by harrowing, rolling, fertilising, etc. The Corsley Show field has been 'mole' ploughed to improve the drainage, it will be interesting to see what happens later in the year – especially about Corsley Show time!

Guy Parkinson



Take your time

Caroline Le Vine, Counsellor in Corsley

I've written before about how long therapy takes but I'm returning to it. Why? Because perhaps my understanding has deepened or shifted and maybe, therefore, I have something else to say.

Many people hope that counselling will be a six-session hit and for some this is true; six sessions and you're sorted. Usually this is possible because you have a very specific and current issue you need to explore. A problem making itself known in the present that has its roots in the distant past, however, will almost certainly take longer to understand and resolve. In this case, the volume of experience is much, much greater; going back over decades, probably. Getting to know such extensive terrain in less than six hours just isn't realistic. We'll be able to look at a particular area in depth or start to familiarise ourselves with the surface of a larger area but we can't do both so quickly. And we need both depth and breadth of self-knowledge to really understand what's going on and why we struggle.

If we can accept that it's a long process and, crucially, if we can accept that we are valuable enough to warrant such an investment of time, money and - at times - discomfort as difficult emotions are brought to light, we've got a chance. We need to relax into the process and to trust that the therapist is on our side. This takes time.

Sometimes a break from therapy is also what we need. Maybe we've gone as far as we can for the time being and we need a chance for what we've learned about

ourselves to settle and become a part of us. More questions may come later; different difficulties may arise or the same one may begin to repeat itself in a different way. It doesn't mean that therapy has failed; quite the reverse: it means it's time to consider some more. Every time we embark on another voyage of self-discovery, we're peeling away another layer, like an onion. It could be with the same therapist or with a new one - it's your choice. Like my returning to this subject in this article, maybe your understanding of yourself has deepened or shifted and you have something else to say.

I practise at St Margaret's Church, Deep Lane, Corsley. A first meeting of up to half an hour is free.

07817 192008

enquiries@carolinelevine.co.uk

www.carolinelevine.co.uk

find me on www.counselling-directory.org.uk

Found!

During the Easter Sunday gales, a gentleman's brightly coloured shirt arrived on my doorstep complete with blue clothes peg attached. I will keep it safe until the 8th May and if not claimed I will take it to a charity shop. Please ring 01373 832284 (Corsley Heath).

Betty Williams

Small ads

£1 for EACH item for sale or wanted (cash only please) - at one of the two drop-off locations)

Please note: no cash, no advert!

FOR SALE

Pendle behind-the-ball **cycle rack** (Pendle product code TA3) RRP £120 – little used, will accept **£70** **01373 832432**

FOR SALE

Wheelchair – Roma medical 1500bl. Lightweight aluminium self-propel, folding wheelchair in very good condition (RRP £279) – **£120** **01373 832432**

FOR SALE

Black and Decker **Workmate** – very good condition **£20** **01373 832170**

FOR SALE

Lovely new '**Chicco**' baby-walker – only used once **£20** ONO **01373 832207**

WANTED

Looking for a small field to rent or buy in the Corsley or Warminster area. Please call **07753 298558** or **07825 647433**

Answers to Bob's Bafflers

- 1 Isambard Kingdom Brunel
- 2 California
- 3 The FBI
- 4 Frans Hals
- 5 Wacky Races
- 6 New York
- 7 Carousel
- 8 Harry Potter and the Philosopher's Stone (or in the USA, Harry Potter and the Sorcerer's Stone)
- 9 Japan
- 10 William Blake
- 11 Belfast (Harland and Wolff shipyard)
- 12 "And if I were your husband, I'd drink it!"

Local organisation adverts

£2.00 per month for a small boxed advert or £7.50 for a full page. Full page adverts are allocated depending on space available and cannot be guaranteed. All monies must be at one of the two drop-off locations (Barters Plant Centre or Acres Supply Garden Centre) by **4pm** on the **19th** of the month. Please note: no cash, no advert!

Trade advertising

Annual trade advertisements (12 issues, when space is available)

1 space	(69mm wide x 33mm high)	£22.00
2 spaces	(69mm wide x 66mm high)	£42.00
3 spaces	(quarter page - 69mm wide x 100mm high)	£60.00
4 spaces	(138mm wide x 66mm high)	£75.00
6 spaces	(half page - 138mm wide x 100mm high)	£104.00

Trade advertisement material should be supplied in print-ready format, to the chosen standard size and correct shape.

For trade advertising enquiries, please contact David James (Trade advert coordinator/Treasurer) at either thebridge832@gmail.com or 01373 832443.



Garden Machinery Specialist

Authorised Dealer

HONDA

STIHL

SALES • SERVICE • PARTS



Professional Tree Surgeons

- **Tree pruning**
- **Felling**
- **Hedge trimming**
- **Barn-dried logs**

Andy Brake

01373 832965

www.mendipmowers.co.uk

Green Farm Ind Est, Chapmanslade, Westbury, BA12 4AN

01373 830429

www.newlandstreecare.co.uk

cloud
homecare

Quality care and
support in Warminster
and the surrounding
villages



We are a small, Corsley based care provider

**We provide care to people who need support
to remain living in their own home**

**Please telephone or email us, or visit our
website for further details**

**Tel. 01373 832 597 enquiries@cloudhomecare.co.uk
www.cloudhomecare.co.uk**

ACRES SUPPLY

WHERE GARDENS GROW



ACRES SUPPLY GARDEN CENTRE
BAY TREE FARM, CORSLEY
NR WARMINSTER
WILTS, BA12 7PP

01373 832591

OPEN 7 DAY A WEEK

www.acressupply.com

FG COLLIER

KITCHENS • BATHROOMS • INTERIORS

WHOLE HOUSE DESIGN & SOLUTIONS



FG COLLIER LTD 29-35 EDWARD STREET WESTBURY WILTSHIRE BA13 3BL
TEL 01373 822227 EMAIL INFO@FGCOLLIER.COM WEB FGCOLLIER.COM