

The Bridge

March 2019

monthly magazine for the villages
of Corsley and Chapmanslade



Join the big 'Spring Clean', frolic at the Folk Night, attend the Annual Parish Meeting, participate in the Parish Plan, see 'Christopher Robin' at Cinema Corsley, coffee mornings and Light Bite lunches, there's lots to do in March...



Mendip Mowers

Why Honda?

*There is a simple reason why you will see
so many Honda products still hard at work
after many years of service;
they are built to last.*

OFFERS AVAILABLE THROUGHOUT THE YEAR

- Mowers • Tillers • Brush cutters
- Blowers • Chainsaws
- Hedge trimmers

Barn Dried Logs Also Available



GARDEN MACHINERY SPECIALIST

SALES • SERVICE • PARTS

www.mendipmowers.co.uk 01373 832965

Unit 7, Green Farm Industrial Estate, Chapmanslade BA13 4JJ



Frome Heating Specialists

J L and M W Knight

Heating and plumbing engineers specialising in:

Oil and gas boiler servicing

Boiler replacement

Energy management

Pressurised hot water systems

Underfloor heating systems

Frome family business established 1964

Stavanger, Corsley, Nr Warminster, Wiltshire, BA12 7QL

Call 01373 832578



199876

The Bridge

monthly magazine for the villages of Corsley and Chapmanslade

Articles

Please submit articles either by email to viv.thomas146@btinternet.com or by hand (legible handwriting please!) and take them to the drop-off locations at Barbers Plant Centre, Chapmanslade, or Acres Supply Garden Centre, Corsley by the deadline.

News, reports, updates, thank you's, etc, from individuals or local organisations are free – the more the merrier – keep 'em coming!

File types

Save your files as .doc – please don't send .docx files – I can't always open them successfully.

Advertising

Small ads are £1 for each item whether 'For Sale' or 'Wanted'.

Events/local organisation ads (churches, clubs, playgroups, etc) are £2 per month for a boxed advert.

Full page ads cost £7.50, are subject to space availability and cannot be guaranteed,

If you are advertising, don't forget to take the fee – cash or cheque in a sealed envelope please, to either of the drop-off points (Barbers Plant Centre or Acres Supply).

Please note: no cash, no advert!

Trade advertising

Please see information on the last page.

In this issue...

8 Bob's Bafflers
a cunning quiz

12 Science
biology: changing the world

14 Parish Council briefing
Chapmanslade

SID 18
new arrival in Chapmanslade

Seven Open Doors 23
news from the pews

Cinema Corsley 33
catch up with Christopher Robin

36 Parish Council briefing
Corsley

41 Whitbourne Chapel
chapel colloquy

46 Countryside matters
views from over the hedge

Deadline

**Deadline for articles
or adverts for the next
issue of The Bridge is
4pm 19th March**

**Please note that no
items will be accepted
after this date**

March

Monday 4th

Annual Parish Meeting – 6.30 pm, Corsley Reading Room

Tuesday 5th

Village Coffee Morning 10am - 12 noon, Corsley Reading Room

Wednesday 6th

Corsley and Chapmanslade Churches – Parochial Church Council

Thursday 7th

Chapmanslade Parish Council meeting

Thursday 14th

Corsley WI - Annual Meeting, 'A Woman's Journey Through the Latter Half of the 20th Century', by Lt Col (Ret'd) Maggie Thackway L/RADC – 7.30pm, Corsley Reading Room

Saturday 16th

Chapmanslade Parish Plan meeting – 2 pm, Villlage Hall

Folk Night with Rosie Butler-Hall – 7.30 for 8 pm, Corsley Reading Room

Thursday 21st

Church and Community Coffee Morning 10 am – 12 noon Three Horseshoes
Chapmanslade

Cinema Corsley - 'Christopher Robin' – 7 for 7.30 pm, Corsley Reading Room

Chapmanslade Parish Plan meeting – 7.30 pm, Villlage Hall

Saturday 23rd

Chapmanslade Great Village Spring Clean – 2 pm, The Three Horseshoes

Wednesday 27th

Corsley and Chapmanslade Churches 12.30 pm – 2 pm Light Bites Soup Lunch Corsley
Reading Room

April

Tuesday 2nd

Village Coffee Morning 10am - 12 noon, Corsley Reading Room

Wednesday 3rd

Corsley and Chapmanslade Churches. Annual Parochial Church Meeting 7.30 pm Corsley
Reading Room

Thursday 11th

Corsley WI - OPEN meeting 'Farming in 2019', a discussion with local farmers – 7.30pm,
Corsley Reading Room



Diary Dates

Thursday 18th

Church and Community Coffee Morning 10 am – 12 noon Three Horseshoes
Chapmanslade

Wednesday 24th

Corsley and Chapmanslade Churches 12.30 pm – 2 pm Light Bites Soup Lunch Corsley
Reading Room

Thursday 25th April

Cinema Corsley - 'Free Solo' – 7 for 7.30 pm, Corsley Reading Room

May

Thursday 2nd

Corsley Show Quiz Night – Royal Oak, Corsley

Tuesday 7th

Village Coffee Morning 10am - 12noon, Corsley Reading Room

Sunday 12th

Corsley Festival Choir Concert – St Margaret's Church

Monday 13th

Corsley Parish Council Annual Parish Council Meeting (election of Chair/Vice Chair) –
7.30 pm, Corsley Reading Room

Thursday 16th

Church and Community Coffee Morning 10 am – 12 noon Three Horseshoes
Chapmanslade

Saturday 18th

Corsley and Chapmanslade Churches May Fayre

June

Monday 3rd

Corsley Parish Council Quarterly Meeting – 7.30 pm, Corsley Reading Room

Tuesday 4th

Village Coffee Morning 10am - 12noon, Corsley Reading Room

August

Saturday 3rd

The Elizabethan Evening presents 'Pride and Prejudice' performed by the Chapterhouse
Theatre Company

Chapmanslade Parish Plan

Village Voice

Residents of Chapmanslade

Come and discuss what will be in our Parish Plan. This will give an overview of the village and what we want the village to be like in five years' time. We will meet in the Village Hall on

Saturday 16 March at 2 pm

Thursday 21 March at 7.30 pm

Come to one or both meetings. Your input and ideas are important!

The draft Parish Plan is available as a PDF at www.chapmanslade.org.uk/ under the Parish Plan link

If you have no internet access, please collect a copy from the 'Shoes or the Church.

Mobile Library

The Wiltshire Council mobile library will visit Chapmanslade (by the school) from 1.45 to 2.30 pm on the following dates;

Wednesday 13 March

Wednesday 27 March

Wednesday 10 April

Wednesday 24 April

Wednesday 8 May

Wednesday 22 May

Wednesday 5 June

Wednesday 19 June

Wednesday 3 July

Wednesday 17 July

Wednesday 31 July

Wednesday 14 August

Corsley Show Sponsors Needed!

The Horticulture and Crafts Committee would love to hear from local businesses who would be prepared to sponsor the H&C prizes. We welcome any amount of sponsorship, so please do get in contact with Fraser Mills ifrasermills@aol.com who would be very pleased to receive your sponsorship. All sponsors are mentioned in the Schedule which is distributed far and wide and are also sold to visitors on Show day, so your business will be guaranteed excellent exposure!

Thank You!

We would like to thank everyone who helped Alan when he had a fall on Sunday 20th January. Alan is now well on the road to recovery.

Alan and Maureen Marsh



Pears Electricians

Nigel Charteris - BSc (Hons) M.I.E.T.



Professional Local Electrician

A HIGH STANDARD OF WORK AT REASONABLE RATES

Part P registered with www.napit.org.uk - Testimonials and references available

Faults & Troubleshooting • Repairs & Improvements
Installation Condition Reports • Boiler Wiring

www.pearselectrical.co.uk

01985 213314 or 07717 534026



OAKLEY

GARDEN MACHINERY

Grove Lane, Marston Trading Estate
 Frome, BA11 4AT



**For Sales, Spares,
 Workshop Service
 and Repairs**

Hayter
 Mountfield
 Lawn King
 Westwood
 Stihl
 Honda
 Toro
 Echo
 Husqvarna
 Shindalwa
 Oregon
 and more...

www.oakleyfrome.co.uk

01373 467712



S B Services



Contact Sean

07828 671566

*For your garden maintenance
 and home improvements*

STUNNING COASTAL VIEWS ON CORNISH COAST NEAR LOOE



Six bedrooms (sleeps 12)

Private access onto beach

Pets allowed

Top class facilities including wi-fi

Rent for week or even long weekend

Downstairs bedroom and shower room

For more info: Sandy Parrish 01373 832522

Bride by Design

Bridal gowns and accessories



2 Silver Street
 Warminster, BA12 8PS

Please contact us to
 arrange an appointment

t. 01985 217216

e. info@BridebyDesign.biz

www.bridebydesign.biz

The **co-operative** funeralcare

- 24 hour service
- Free bereavement advice
- Pre-paid funeral plans

WESTBURY 48 Warminster Road, BA13 3PF
01373 858142

WARMINSTER 3 George Street, BA12 8QA
01985 220105

FROME 1 Nunney Rd, Frome BA11 4LA
01373 473426



southern coop

ORCHARD UPHOLSTERY

RE-UPHOLSTERY OF
ANTIQUe AND MODERN
FURNITURE

❖ FREE ESTIMATES ❖

COLLECTION AND
DELIVERY SERVICE

Telephone Lesley
01373 464870

Sharon's Foot Clinic

SAC Dip FHPT SAC Dip FHPP



Fully insured and highly trained

For the professional treatment of:
Corns · Callus · Cracked Heels
Athletes Foot · Fungal Infections
Thickened Nails · In-growing Nails
Diabetic Foot Care · Verrucas
Nail Cutting · Nail Reconstruction

Contact Sharon on
01373 836734 or 07728 200402

Clinic appointments at
12 Sunny Hill, Nunney, BA11 4ND

Home visits also available

Corsley Parish Council

ANNUAL PARISH MEETING

**Monday 4th March
6.30pm, Corsley Reading Rooms
(upper room)**

This YOUR meeting

Baytree Close

Proposals for more affordable housing

Presentations by Wiltshire Strategic Assets Team

Andrew Mead – Commissioning Officer

Sean Tye – Senior Project Manager

Longleat Estate

Future Plans

Presentation by Jon Timney

Director, Estate and Property Maintenance

Parish Council

Chairman's Report

All Parish Councils in England are required by law to hold an Annual Parish Meeting. The meeting allows the council and local community organisations to explain what they have been doing over the last year and electors can have their say on anything which they consider is important to the people of the parish. Please note that this is not a Parish Council meeting, although it is chaired by the PC.

Bob's bafflers

- 1 On which subject does Monty Don write and broadcast?
- 2 According to Edward Lear's poem, how long was the sailing trip undertaken by the Owl and the Pussycat?
- 3 Fray Bentos is a town in which South American country?
- 4 According to the play by Samuel Beckett, who were Vladimir and Estragon waiting for?
- 5 Which town was originally the county town of Wiltshire?
- 6 In which full-length cartoon are the main characters called Pongo and Perdita?
- 7 'Eye for eye, tooth for tooth'. According to Exodus what comes next?
- 8 Ganymede is the largest moon in the solar system; around which planet does it orbit?
- 9 What number do the Roman numerals XL represent?
- 10 What is the speed limit on a German motorway?
- 11 If eating Cambridge No 5s, Wellands or Bedford Winter Harvests what would you be eating?
- 12 How many of each animal did Moses take onto the ark?

Answers on page 48

Winter warmth with Lite Bites

Last month I wrote a short piece for The Bridge which, due to my unreliable email, did not arrive with the Editor. At the time I mentioned the possibility of the return of 'the Beast from the East' and, although we now seem to be enjoying an early spring, it's always a good time to have soup for lunch!

Why not make a date to visit the Corsley Reading Rooms on **Wednesday 27th March** (and **Wednesday 24th April**) to enjoy some wholesome soup and pleasant conversation in convivial surroundings. There are always four choices of soup and plenty to go around so come along and meet us if you have not been before. We only ask for a donation towards our charity of the month. In March we will be giving our donations towards the Cystic Fibrosis Trust.

Lastly, and rather late, I would like to report that our Christmas meal was a great success. It was attended by 40 villagers and friends, raising well over £200 for the Children's Society. Thanks must go to all those who helped on the day – especially those who stepped in at the last minute. Without you it would not have been such a success. Hope to see you all again this year!!

Maureen Willcox

UPVC REPAIRS WILTSHIRE.CO.UK

FOR PROFESSIONAL WINDOW & DOOR REPAIRS

Are you having a problem with your UPVC windows or doors?

- ✓ Misted glass
- ✓ Broken or faulty window hinges
- ✓ Faulty locks
- ✓ Jammed windows or doors
- ✓ UPVC door adjustments
- ✓ Window and door handles

Call us – we are here to help

All work guaranteed

01373 430010 07795 143228 www.upvcrepairswiltshire.co.uk

the three horseshoes

Open daily from 10AM-11PM
serving delicious home cooked food
(12-3, 6-10 Mon-Sat. & all day Sun.)

Enjoy a refreshing drink in our beer garden
with spectacular views of Longleat and Cley Hill,
or indulge with one of our regular meal deals
by the warm open fire on a bitter winter's day.

We organise monthly events,
featuring live music, comedy + much more!

follow us on Facebook for more details



threehorseshoeschapmanslade



Chapmanslade Village Hall

Can be hired for all your functions:
parties, weddings, meetings, classes, etc

For hiring information, phone
Ken Davies 01373 832034 or email
kennethdavies1949@gmail.com

YOGA CLASSES

Corsley Reading Room

Tuesdays 7-8.30 pm

Wednesdays 5.30-7 pm

(other classes also available)

Jackie Jasper

01373 832301 yogawithjackiej@gmail.com
www.yogawithjackiej.co.uk



**Shake off those pounds and
dance yourself fit.**

Chapmanslade Village Hall
Monday 7.30pm - 8.30pm

Longbridge Deverill Village Hall
Thursday 7pm - 8pm

For all levels of fitness and
NO experience needed.

For more information please contact
Amy 07830 119032

18a Bath Road
Warminster, BA12 8PD

Julie Snelgrove
Professional Hair Stylist

- ✂ Mobile service on Tuesdays
- ✂ All aspects of hairdressing carried out
– modern and traditional

Telephone: 01985 300972
Mobile: 07540 635214
juliemarshall66@blueyonder.co.uk

**Busy Bees
Pre-School
Chapmanslade**



For children aged 2-5 years
Weekdays (term time only) from 8 am-5 pm

Please contact Kelly Williams to arrange a
visit and a free trial session for your child
Breakfast club and after-school club available
(term time only)

Telephone 07749 257608
busybeespre-school@hotmail.co.uk

For your
Heating Oil Supplies
contact

KINCH FUELS

at their
local depot in
Devizes, Wiltshire

Telephone 01380 727102

*The company you and
your home will warm to*



LUXURY PRIVATE CAR HIRE

A locally based, door-to-door, personal
service for up to six passengers in
air conditioned comfort
AIRPORTS • SEAPORTS • ANYWHERE

For bookings, please call
01985 840088 07903 307734

Mole Catcher

01373836350

07512681111

**No Mole
No Fee**



Kevin O'Mahony

Quality Painter and Decorator

Internal and external painting

Artexing

Wallpapering

Coving

Hand painted kitchen units

07724 349447 or 01985 301197

email kevo7743@googlemail.com

www.thewarminsterpainter.co.uk

Pippa's Pet Care

Dog Walking · Cat Sitting

Small Animal Care

07745 482187 01373 839074

Pippaflack@icloud.com

Facebook/Pippa's Pet Care

Steve Dayman-Johns

Driving Instructor

Condensed Courses and

Gift Vouchers available

Tel 01373 865422 - Mob 07730 445648

email stevekdj@gmail.com



Downlands
TREE SURGERY

Expert Tree Care

Telephone Jon Burgess on

01985 841057

Scrub clearance

Skilled pruning

Tree felling

Stump removal

Qualified and insured

**Free tree health
survey and quotes**

DAVID EDMUNDS & CO

ACCOUNTANTS & TAX CONSULTANTS

*Specialists in the self-employed, small and
medium business and self assessment.*

*Preparation of accounts, VAT, PAYE,
income tax and corporation tax returns.*

Personal, friendly service

Evening appointments by arrangement

Telephone 01225 334447

Home 01373 832430

Keep active with physiotherapy

Alison Rossiter MCSP HPC

Chartered Physiotherapist

30 years experience in physiotherapy specialising
in the treatment of muscle and joint problems.

Helping people to improve their health and fitness
through treatment, exercise and advice.

Home visits can be arranged.

Daytime and evening appointments available.

If you need help please contact:

Beckington Physiotherapy 01373 831483

Email: arossiterphysio@gmail.com

www.beckingtonphysio.co.uk

Biology: changing the world

What happened next?

The Editor of the science journal 'Nature' was once asked how much of what he published was wrong. He replied, "All of it". Science moves forward, and he knew that further developments would render the published work incomplete. I have been writing these articles for The Bridge for four years and there have been many subsequent developments. These are just a few of them.

- **March 2015: Antibiotics.** Several new antibiotics have been isolated, but these have yet to complete clinical trials. Antibiotic resistance is still a major issue. In 2016 an American woman died because all 26 US-licensed antibiotics failed to cure her infection.
- **April 2015: 3-parent babies.** The first procedures for mitochondrial replacement therapy were carried out in the UK during early 2018.
- **July 2015: Vaccination.** The latest figures from the World Health Organisation show that measles cases in Europe were 2015: 5,723; 2016: 25,863; to 2017: 82,596. Measles is increasing again due to misinformation from anti-vaccination groups.
- **May 2015: GMOs.** An analysis of 147 studies showed that growing genetically-modified crops, when compared with unmodified varieties, reduced overall pesticide use by 37%, increased crop yields by 22% and increased farmers' profits by 68%.
- **September 2015: Ebola.** An outbreak of

Ebola in the Democratic Republic of the Congo from July 2018 was caused by a new deadly variant virus, but there is now an effective experimental vaccine being used. A new Ebola-like virus was recently found in China.

- **January 2016: Gene-editing.** A Chinese scientist claimed in November 2018 to have used gene-editing to make babies resistant to HIV. This received world-wide condemnation from scientists. He has been fired by his institution and arrested.
- **February 2016: Cancer.** A California jury decided that glyphosate causes cancer, relying on the much-criticised report of the International Agency for Research on Cancer. I returned to this in October 2018. I also wrote about new cancer treatments last month.
- **August 2016: *E. coli* O157.** Sainsbury's supermarket recalled packs of burgers after several people suffered from *E. coli* O157 infection in December 2017. In 2018 a major outbreak in the US and Canada was due to contaminated water used to irrigate lettuce.
- **March 2017: Air pollution.** Recent data have shown that people in the UK are 64 times more likely to die from the effects of air pollution than those in Sweden. In January 2019 the UK Government launched a new plan to tackle air pollution and a mother received permission for a new inquest, suspecting air pollution caused her daughter's death.

- **August 2017: Contaminated blood.** The inquiry under a High Court judge heard testimonies in September 2018, 26 months after the inquiry was announced. It may take up to two years to report. Allegations of a cover-up will be investigated.
- **September 2017: Norovirus.** An outbreak occurred in many parts of the UK in mid- to late-2018, with nearly 2000 cases reported. Recently a new target for norovirus drugs has been identified by Glasgow virologists.
- **December 2017: 'Flu vaccine.** The 2018 'flu outbreak was bad with the highest number of related UK deaths since 1975/6. The World Health Organisation has put vaccination, particularly against 'flu and pneumonia, as one of the top ten public health priorities
- **March 2018: Modified mosquitoes.** The cultivation and release of mosquitoes infected with *Wolbachia* bacteria caused dengue fever cases to plunge in Townsville, Australia. There is hope that this will also work on Zika virus transmission elsewhere.
- **April 2018: Carbon monoxide.** In the year 2017-18, the number of cases of CO poisoning in the South West increased by 134% over 2016-17, possibly due to the harsh winter.
- **May 2018: Tree disease.** The first cases of transmission of Chalara Ash Dieback to other species, white fringetree and two species of non-native privet, were confirmed at Westonbirt Arboretum in mid-2018. Lilac, forsythia and jasmine are also at risk.
- **June 2018: Light pollution.** A study published in January 2019 recommends that street lights are turned off after midnight to encourage moths to pollinate

some plants. A UK light pollution map is available at www.nightblight.cpre.org.uk.

- **November 2018: Alabama rot.** There were further confirmed cases to 6 February 2019 (the latest figures available), resulting in 52 cases in 2018 (up from 40 in 2017) and 6 cases in the first five weeks of 2019. None of the recent cases were nearby.

The original articles can be seen at www.corsleyandthebridge.co.uk/archive.html.

Nigel Brown is happy to receive comments, questions and suggestions for future articles at nigelbrown48@gmail.com

The Bridge delivery volunteer needed

Due to the previous delivery person moving out of the village we need someone to undertake delivery of 21 copies of The Bridge in the area **from the Hollow and along Deep Lane** towards the church but not quite as far as the old school.

21 copies of the magazine would be delivered to you on or around the 28th of each month. Delivery doesn't take long and helps ensure that every house in the village gets a copy of The Bridge each month. If you would like to take this on, please contact Liz Garrett on 01373 839060 at lizi.garrett@btinternet.com

Chapmanslade

Parish Council Briefing

Notes from the Parish Council meeting held on 7th February which was chaired by John Lewis in the absence of the Chairman

The meeting opened to the public for discussions on any matter of concern and the following issues were raised:

Planning applications

Land to the rear of 102 High Street

Local residents' voiced concerns over the sale of the land by Wiltshire County Council, which had the benefit of restricted planning permission, but was being marketed as if those restrictions would not apply. Additionally, householders who currently enjoyed access to their properties across the land were concerned that it may not continue under new ownership, in addition to the road safety issues.

Parish Plan

A general discussion took place on the publication and implementation of the Parish Plan, drafted for the Parish Council by the Voice of the Village team.

Road safety

There was general praise for the introduction of the new Speed Indication Device (SID), which on early evidence had reduced the speed of vehicles into the village from the Frome direction.

Closed session

The meeting went into closed session and

approved the minutes of the previous meeting held on 10th January 2019. The Parish Council then discussed the following issues:

Parish Plan

All present commended the Parish Plan and the hard work that had gone into the project so far. Discussion surrounded how best to progress the plan. Following the meeting it was agreed that there would be two presentations of the plan on Saturday 16th and Wednesday 21st of March.

SID

It was agreed to spend further monies on the equipment to make it's use more flexible and efficient.

Village Hall

A brief report was given on the meeting held with the Village Hall Committee at which their finances and plans were discussed.

Yellow/white Lines

The process and required consents for yellow/white lines were outlined, together with the cost implications. It was accepted that the most likely scenario would not be the desired outcome for some residents.

Planning and planning applications Black Dog Cottage

No objections were raised.

Sienna's Valley Farm

It was noted that Wiltshire had approved the application.

Thoulstone Park

This application had previously been approved by Wiltshire with some 23 restrictions. Concerns were expressed regarding the local residents' views of the changes to the site access.

Correspondence

It was noted that fly tipping had occurred again in the village and that the Police were currently investigating. The two grit bins in the village were empty at the time the snow came. It was agreed that the village needed a process to check them in advance of any bad weather.

Next Meeting

The next meeting of the Parish Council will be held on 7th March, at the Village Hall.

John Lewis
Vice Chairman
01373 832875

**Local Carpenter/
Handyman**
(Retired cabinetmaker)

**Fitted wardrobes,
cupboards,
wood flooring,
skirting boards**

07971 550050

Have you completed your application for enrolment on the new Church Electoral Roll?

Every six years we are required to prepare an entirely new Electoral Roll, which comprises a list of parishioners who feel they wish to become church members and have a say about the future of our churches both locally and nationally.

Joining the church Electoral Roll marks the difference between going to church and being the church. It indicates your commitment to regular worship and to participation of church life here in our community. It is therefore a most important step. In addition, it makes it possible for us to keep in touch with you and offer appropriate pastoral care whenever the need may arise.

All members on the existing Electoral Roll should now have received an application form. If you wish to continue be on the Electoral Roll please complete this form.

If you are not on the existing roll but would like to be, please pick up a form from either St Margaret's or St Philip and St James' – Church wardens will help you locate them.

Please return all completed forms by Wednesday 6th March to:

Electoral Roll Officer
Diana Britten
69 Lane End
Corsley
BA12 7PG

or place it in the folders provided in St Margaret's or St Philip and St James' by Wednesday 6th March.

If you have difficulty getting out and would like your form collected please telephone me Rev. Diana Britten on 01373 832515 or email diana.britten@btinternet.com.

ALLSOP CARPETS & FLOORING

DOMESTIC ♦ COMMERCIAL ♦ INDUSTRIAL

Christchurch Street West, Frome BA11 1EB

TEL: 01373 463866 MOBILE: 07887 953014

www.allsopcarpets.co.uk

KEYVOLUTION

Locksmith and
Carpentry Services
serving the Wiltshire Area

Warminster based company offering locksmith and carpentry.
Police cleared, reliable and honest service.
Any other quote beaten.

- BS3621 lock upgrades for house insurance approval
- Garage doors, locks and running gear
- Lock repairs – specialising in Chubb mortice locks
- Upvc double-glazed door and window locks fitted – even old ones!
- Door or window locks opened destructively or non-destructively (indemnity required for these services)
- Digital code locks supplied and fitted
- All types of carpentry work – mostly 2nd fix and maintenance

Check out my website

www.keyvolution.co.uk

or call Ben on 07748 214799 or 01985 219799



White Horse Windows

Windows, Doors, Conservatories and
more...

Local Company, Exceptional Standards
10 year guarantee

Windows Fascia & Guttering
Doors Conservatories

CERTASS Registered

For a Free Quotation call Ryan on
07909 441442 or 01373 302594



Acer Tree Surgeons Ltd are Wiltshire based, and approved by the Arboricultural Association. Our team are all NPTC qualified and first aid trained and proof of insurance is sent out with every quote

Tree removal – dismantling and felling

Crown reductions, re-shaping and pruning

Hedge cutting

Stump grinding

Qualified surveys and management of trees

Free no-obligation quotations and health check

Contact Nick or Roy on 07590 986261 or 01373 832026

royderham@acertreesurgeons.co.uk

www.acertreesurgeons.co.uk

The Old Post Office, 85 High Street, Chapmanslade, BA13 4AN



BARTERS PLANT CENTRE

'Passionate about Plants'

Shrubs ♦ Perennials ♦ Trees ♦ Roses ♦ Conifers
Climbers ♦ Fruit Trees ♦ Hedging ♦ Soft Fruit ♦ Seeds
Bulbs ♦ Basket Plants ♦ Bedding ♦ Vegetable Plants
Christmas Trees ♦ Holly Wreaths
National Garden Gift Tokens



Opening Hours

Mon to Sat	9 - 5	(March to October)
Mon to Sat	9 - 4.30	(November to February)
Sun	10 - 4	(March to June + December)

Just off A36 in Chapmanslade, Wilts, BA13 4AL
01373 832694 www.barters.co.uk



JONATHAN CORP

Painter and Decorator
General House Maintenance
Sturford Mead Farm, Corsley
Warminster, Wiltshire, BA12 7QU
01373 832213

Postlebury News R Gould – Newsagent

All papers and magazines
Home delivery service

01749 850556 07979 452677

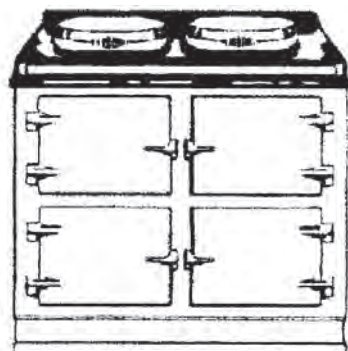


T A P Services

Telephone 01373 463106

tapservices@btinternet.com

*Authorised Stanley Service Agent
Oil Range Cooker & Oil Boiler Servicing*



Range Cooker Servicing

Making a difference...

SID arrives in Chapmanslade!

Since mid-January a solar powered Speed Indicator Device, SID for short, has been deployed in the village

According to residents, the SID has already made a very welcome noticeable reduction in the speed of vehicles entering the village from the Frome direction. The speed limit through the village is 30mph.

The SID was procured by the Parish Council following much work to get approval and partial funding from Wiltshire County Council Area Board, but it would not have happened without the determined efforts of our wonderful Community Speedwatch Team (CSW), in particular Councillor Phil Holihead, who submitted the detailed proposal.

Phil says that the next step is to get site approval and funding to erect another pole and fixings at the Westbury end of the village so that the SID can be moved on a regular basis in accordance with Wiltshire Council guidelines. No matter how inclement the weather, data is downloaded onto a laptop for analysis.

The volunteer Chapmanslade CSW Team currently has nine members who stand at four approved sites along the High Street: two at the Westbury end, one in the middle, and one at the Frome end.



Phil explained, "All CSW reports of speeding vehicles are sent to Wiltshire Police who then either send a letter to the offender or, if their speed was over 40mph, they will visit them. Action is also taken against repeat offenders. Similar schemes have been established with adjoining counties to ensure out-of-county drivers are not exempt.

Phil goes on to say, "We're a friendly and open village so whilst we want visitors to come to Chapmanslade to enjoy our village



by attending our events, taking advantage of our network of over 30 footpaths, and having a meal in our great local pub, The Three Horseshoes, we want to discourage drivers who speed through the village endangering our community when using us as a short cut between the A36 and other trunk roads. Hence the need for Community Speedwatch and our new SID."

A strong relationship has been built between the community and Wiltshire Police over the last few years; our local PCSO joined pupils from Busy Bees pre-school earlier this year to assist the Speedwatch team and Wiltshire Police regularly carry out speed checks along Chapmanslade High Street.

Terry Rose



Job Opportunity **Barter's Plant Centre** **Chapmanslade**



We are looking for a person to join our Plant Centre team from March to June, on Sundays 10am to 4pm.
 The work would involve operating the till, watering and helping customers.
 This would suit a student saving up for a gap year or university.
 Please email diana@barter's.co.uk



Clean-it

Recommended by



Carpet and upholstery cleaning specialist

01373 462059 07779 247961 www.clean-it.biz

Home ~ Private ~ Lettings



Garston
Veterinary Group

Vaccination Offer !



Re-start your adult pet's vaccination course for the price of a single booster.

By maintaining the recommended vaccination programme you help protect your pets and others they meet.

Recommend a friend to Garston Veterinary Group and we will give you both £10 off your next visit*

*T&C's apply, please visit www.garstonvets.co.uk
Please contact a Garston Surgery for more information

Frome 01373 452225 | Melksham 01225 617779 | Trowbridge 01225 754021 | Warminster 01985 213350 | Westbury 01373 301448



www.garstonvets.co.uk



Domestic Appliance Sales and Repair Service

Domesticare

21 Keyford, Frome

www.domesticarefrome.co.uk



01373 467351

Childminder

Ofsted registered

Full and part time. Before and after school
Holiday spaces available

Pick-up and drop-off offered

Call 01373 832854 or 07883 025476
d.m.rawlings@outlook.com

DRIVE IN AND PICK YOUR OWN FIREWOOD

Woodchip, Mulch
Hardwood Logs, Softwood Logs
Kindling, House Coal, Smokeless Coal
Delivery available



Mon to Fri: 7.30am - 4.15pm

Closed on Sundays & Bank Holidays

Open Saturdays from Sep-Mar only until 12 noon

01985 213507 www.longleat.co.uk/forestry

5% discount for tenants of Longleat Estate



**LONGLEAT
FORESTRY**

Corsley Old School Playing Field

Orchard update



At the end of January our new orchard hosted its first Wassailing as well as being blessed by Di Britten (we were covering all the bases). For those you that do not know as there is some debate, but wassailing is regarded as an ancient tradition believed to date back to Anglo Saxon or Pagan times. The term 'wassail' comes from the Old Norse 'ves heill', meaning 'be healthy', and was probably introduced by Danish-speaking inhabitants of England, according to the Oxford English Dictionary.

The wassailing, or blessing of the fruit trees, involves drinking and singing to the health of the fruit trees in the hope that they will provide a bountiful harvest in the autumn.

Corsley's wassailing involved a goodly group of villagers gathered around the firepit at the orchard to drink Corsley cider and hot chocolate and eat wonderful sausage rolls and apple cake (thank you Rachel, Lesley and Chloe).

We then crowned with a crown of ivy, holly and hazel (thanks Andy), a wassail King and Queen before being led by Ped in a number of wassailing songs including:

*"Apple tree, apple tree we all come to
wassail thee,
Bear this year and next year to bloom and
blow,
Hat fulls, cap fulls, three cornered sacks
fulls..."*

He then took everyone down to the apple trees in a noisy procession, crashing saucepans and lids with wooden spoons, to waken the sleeping tree spirits, and also to frighten off any evil demons that may be lurking in the branches.

Cider was then poured on the roots of the trees and cider soaked toast placed in the branches for the orchard robins. I wanted to thank everyone who came along despite the freezing weather.

Since then, Freddie and Frazier have been doing a great job helping out every weekend (as part of Freddie's Duke of Edinburgh award) continuing to improve the site.

In the next month we will be grafting some of the unique village fruit trees for planting next year and planting hazels and cob nuts thanks to support from the Parish Council and Corsley Show.

The Elizabethan evening have also kindly agreed to provide a bench for you to sit and contemplate the blossom.

Please feel free to go and have a look at progress and if you would like to help or donate trees please let me know.

Neil Carpenter
neil@nmc2.co.uk
01373 832314
07919 057997

Little Cuckoo's Pre-School

Lyes Green, Corsley, BA12 7QH

Friendly, dedicated pre-school in the heart of the countryside for children aged 2-5 years

Monday, Wednesday, Thursday and Friday
9 am - 3 pm during term-times

We accept 2-year-old funding in accordance with Wiltshire Council guidelines
Mother and Toddler group Tuesday mornings
10 am - 11.30 am during term-times



SESSIONS AVAILABLE NOW

Speak to Hayley McMahon
Pre-School Manager on 01373 832298

Find us on facebook or visit www.littlecuckoos.co.uk

A free trial session is available

Registered Charity Number 1064800

Corsley Tennis Club



New members welcome –
all ages, all abilities

Three hard courts available all year

Weekly junior coaching available

Low subscriptions

Contact either

Emma Fox 07512 009580

Sue Newell 01373 825560

www.corsley-tennis.uk

CHRIS SEVIOUR
Building Services

07894 708949

cmseviour@gmail.com

Roofing, Loft conversions,
Extensions, Plastering,
Natural stonework

Cross Keys

Community Free House
Lyes Green, Corsley, BA12 7PB

Monday, Wednesday, Thursday (closed Tuesdays)

12 noon to 3pm 5.30 to 10pm

Friday and Saturday

12 noon to 3pm 5.30 to 11pm

Sunday

12 noon to 10pm



01373 832406

www.crosskeyscorsley.co.uk

Facebook @CrossKeysInnCorsley

NOTEBOOKS2GO

Laptop / PC / Tablet / Phone / Apple
Repairs / Upgrades / Accessories



Tablet & Smartphone Repairs
"Affordable Reliable Service"



Screens - Charge Port - Camera - Battery - Headphone Jack & More

Computer Repair

any brand, any problem



51 Haynes Road, Westbury, Wiltshire, BA11 3HD

Tel - 01373 865400 / Email - support@notebooks2go.co.uk

Seven Open Doors

Dear Friends,

I am writing this letter at the end of a beautiful day; when I walked the dogs there really was the smell of spring in the air and I saw the brilliant yellow of daffodils for the first time. When you read this spring will have truly sprung although having said that we might be encased in a mountain of snow such is the fickleness of English weather. Anyhow, the light is returning, the bulbs are opening and the winter sunshine is gaining more strength every day.

This month in the church we observe the beginning of Lent with Ash Wednesday when the sign of the cross in oil and ash is made on people's foreheads. To be honest, not many people come to the Ash Wednesday service, which is a shame as it is a very thoughtful and moving occasion. In towns and cities churches quite regularly take the ash and oil out onto the streets and offer the ashing as it is called to passers by. I love that idea as I think the church needs to stop hiding itself away and get out there where people are. It's not quite the same in villages though is it, there's not exactly loads of people wandering about and in the places people gather, like our pubs, it wouldn't go down well if I turned up with my oil and ashes. If you want to read a wonderful book telling the story of what happened when a church did 'get out there' read 'City of God' by Sara Miles; this is what the blurb says:

City of God is a captivating account of venturing beyond the borders of church ---It tells the story of one day in Sara's ministry: Ash Wednesday, when she takes a bowl of ashes from her local church to public places including bus stops, bakeries, beauty shops, fast food joints, hospital waiting rooms and street corners. She invites strangers to receive the sign of the cross on their foreheads, and offers blessing to waitresses and drunks, mothers and babies, believers and doubters alike.

It would be wonderful if some of us read the book and then got together to discuss it, in the pub or something; if anyone fancies doing that do get in touch with me.

Why is Ash Wednesday so important? Well because it reminds us that we are dust, in other words, one day we will die, that is what it means to be human, and we are very bad at talking about that in our society. It reminds us that being human involves getting things horribly wrong and that now and again we need to acknowledge the reality of that. But mostly, and above all else, it reminds us that we are loved, we are loved, we are loved; the oil of healing is for all of us no matter who we are or what we have done

I finish with another quote about the book 'Where most aim for the clouds, Sara's focused on the dirt and sweat and blood and struggle of this world and the presence here in it with us – which is, of course, the best news of all'.

Love and prayers,
Pauline

March Church Diary

Sunday 3rd March: Sunday next before Lent

8am at St Mary, Kingston Deverill: 1662 Holy Communion

9.30am at St Margaret's: Eucharist

10.30am at St Peter & St Paul's, Longbridge Deverill: Morning Worship



Wednesday 6th March: Ash Wednesday

11am at St Philip and St James', Chapmanslade: Eucharist with Ashing

6pm at St Peter & St Paul's, Longbridge Deverill: Eucharist with Ashing

7.30pm Parochial Church Council: 5 Brimhill Rise



Sunday 10th March: 1st Sunday of Lent

9.30am at St Philip & St James', Chapmanslade: Family Communion

10.30am at St Mary the Virgin, Kingston Deverill: Eucharist

11am at St Margaret of Antioch, Corsley: 1662 BCP Matins



Sunday 17th March: 2nd Sunday of Lent

10.30am at St Margaret of Antioch, Corsley: Family Worship

10.30am at St Michael the Archangel, Brixton Deverill: Eucharist



Thursday 21st March

10am at Three Horseshoes: Church & Community Coffee Morning



Sunday 24th March: 3rd Sunday of Lent

9.30am at St Philip & St James', Chapmanslade: Eucharist

10.30am at St Peter & St Paul's, Longbridge Deverill: Eucharist



Wednesday 27th March

12.30pm at Corsley Reading Room: Lite Bites Soup Lunch



Sunday 31st March: 3rd Mothering Sunday

10am at Chapmanslade School: Eucharist

10.30am at St Peter & St Paul's, Longbridge Deverill: Mothering Sunday service

Sunday 7th April: 5th Sunday of Lent
8am at St Michael the Archangel: 1662 BCP Holy Communion
9.30am at St Margaret of Antioch, Corsley: Eucharist
10.30am at St Peter & St Paul's, Longbridge Deverill: Morning Worship

Christingle and Candlemas

On Sunday 10th February, a week later than planned because of the snow, we celebrated the 50th birthday of Christingle at St Philip and St James' Church. Although not as many people as normal turned up we all enjoyed making our Christingles, using an orange, cocktail sticks, sweets and a candle. We then had a short Candlemas service which included a dramatised version of Christ's presentation at the Temple. Finally, we all enjoyed a special birthday tea after the service with a very special 50th birthday cake made for us by Sue Fear.

Fundraising

The Frome Rotary Clubs have very kindly offered us the use of their shop in the Westway Centre in Frome on Saturday 2nd March. This will be the third time they have made this generous offer and on the previous occasions we have been able to raise a significant amount of money for church funds. So, if you plan to be in Frome on the 2nd, do call in and say hello, and perhaps pick up a few bargains. Also, if you would like to donate any bric-a-brac, books, toys, etc., for sale in the shop these will be most welcome.

50/50 Club

We now hold a monthly draw with a single prize of £100 each month, with a £200 single prize in December. Why not join the 50/50 Club? It costs £24 per year per membership and you can have as many memberships as you wish. As we return 50% of the membership fee as prizes the more that join the bigger the prize pot. Please contact either Neil Britten, Clare Merritt or Keith Muston for a standing order form.

Our Silent Auction and Sale of Promises was held on February 23rd at Chapmanslade Village Hall. Next month's edition of The Bridge will include a report on the auction.

Two dates for your diary

Our May Fayre will be held on the 18th May and our Christmas Coffee Morning will be held on 30th November.

Activities in Lent

On 4th April we are planning to treat some of our residents to lunch as part of our commitment to putting the community at the heart of our church. Watch out for further details in our weekly newsletter.

Welcome, Congratulations and Farewell

We welcome into the church family Samuel Green who was baptised at Longbridge Deverill on February 3rd. The funeral of Brian Carpenter of Chapmanslade took place at the West Wilts Crematorium on 8th February. We offer our prayers and sympathy to Celia and her family.

Electoral Roll

We are currently in the process of putting together a new Electoral Roll, which is something we need to do every six years. Membership simply means that you are members of our church family. Current members of the roll have recently received a letter from Pauline inviting them have their name added to the roll again. If you are not a member at the moment, but would like to be, please collect a form from one of our churches, or from Di Britten, our Electoral Roll Officer, or from one of the churchwardens. Please note that all completed forms should be returned to one of the churches or to Di by 6th March.

Parish Contacts for Corsley and Chapmanslade

Rural Dean	Rev Pauline Reid revpauline@btinternet.com	01985 841290
Lay Pastoral Assistants	Richard Dean Barbara Hughes Claire Tanner	01373 832594 01373 832273 01985 218099
Pastoral Visitor	Alan Hopkinson	01373 832393
Churchwardens		
St Philip & St James'	Ian Buick	01373 832318
St Margaret's	John Helliar	01373 832803
Deputy Churchwardens		
St Margaret's	Currently vacant	
St Mary's	Harcourt Gough	01373 832039
St Philip & St James'	Janet Aylesbury	01373 832752
PCC Secretary	Phil Jefferson	01373 832845
PCC Minute Secretary	Sue Fear	01373 832074
PCC Treasurer	Keith Muston	01373 832755
Planned Giving Officer	Judith Helliar	01373 832803
Choir Leaders	Marion Muston Claire Tanner	01373 832755 01985 218099
Tower Captain	Marion Moldon	01373 832672
Electoral Roll	Di Britten	01373 832515
50/50 Club	Neil Britten	01373 832515
Benefice Administrator and Safeguarding Officer	Marion Muston clehillchurches@gmail.com	01373 839026 01373 832755

Copy for Seven Open Doors should be sent to Keith Muston at
themustons@btinternet.com subject 7ODs or phone 01373 832755.

If you would like to receive weekly news of Church events and activities, please send your email address to the above, with subject 'Through the Open Doors' or download a pdf from the 'churches' pages at www.corsleyandthebridge.co.uk

Expert repairs for
PCs & Laptops
Macs
iPads
Tablets



Frometech

Tuition available
Macs, PCs and iPads

Take the stress out of IT
Call Today!

Security Review of
your computer

01373 470170
www.frometech.co.uk

Qualified & Experienced Counsellor

Lisa Adams Dip.Couns. Reg.BPC

Weekly sessions offered for adults on an open-ended or short-term basis according to individual requirements

Tel: 07904 843122

email: lisaadams.corsley@gmail.com

Ski Apartment – French Alps

Ski in/ski out – sleeps 6

Well equipped – immaculate condition

For more information or to book online visit:

w. www.ski-les-cimes.co.uk

f. facebook.com/ski.les.cimes

e. lesleygolledge@gmail.com

t. 01373 832533

npv plumbing & heating

Installation • Servicing • Repairs

Bathroom and tiling specialists

All plumbing and heating work undertaken

Our fully qualified plumbers offer all general plumbing services from boilers to bathrooms. We will gladly advise clients on the most suitable products for their property – be it heating systems, boilers, radiators, bathrooms or showers.

07738 940355

www.plumbersfrome.co.uk

Hypnotherapy

If you need help with:

Anxiety

Depression

Phobias (such as flying or spiders)

Panic attacks

Relaxation

Weight management

Smoking cessation

Natural childbirth

Confidence

Public speaking

Exam nerves

and much, much more...

Call ANJI HOLLAND on
07944 647 978 / 01373 832 898
to enquire or just for a chat

www.hollandhypnotherapy.com

With practices in Chapmanslade and Bath

I am a member of the National Council for Hypnotherapists
and am bound by their code of practice and ethics

Join the Great Village Spring Clean Saturday 23rd March 2 pm at the Three Horseshoes

Equipment will be provided but do bring gloves, bin bags and hi-visibility jackets if you have them.

Parish Councillor, Phil Jefferson, says "We want as many people, of all ages, to come along and help clear-up the litter that has accumulated in our village over the winter months. We're hoping for a great village turn-out, a real village event." Phil adds "This 'Village Voice' initiative will help to improve the street scene throughout the length and breadth of our village."



We had a great turnout at last year's Spring Clean. If you were there, we'd love to see you again on the 23rd, if not, don't miss it this time round!

Corsley Memorial

Playing Field news

Winter is slowly coming to an end with snowdrops and daffodils raising their heads to give us the first blush of colour

After last year's amazingly hot summer and the damage caused by badgers short of food, there is a lot to do to get the playing field back up to perfect health.

The first mowing and rolling of the year has already taken place and Ped has started work on the cricket square.

For all those keen to support us, we will be having a field day in April to get everything ready for the year ahead. Look in next month's edition of The Bridge for the exact date. These days are really important for a number of reasons – they allow a concentrated effort to get everything spick and span for the summer, they get families involved in looking after a wonderful resource to the village and they allow the committee who work so hard for everyone to know they are appreciated. I would encourage you to come along and help, even for an hour, for a cup of tea and cake and probably some freshly made pizza!

We wanted to say thank you to neighbours of the Playing Field who help by keeping areas outside their homes mowed and tidy, ask permission to gain access to the field for workman or gardeners, and generally work hard to support the great work done at the field. However, following a recent incident, where we found a workman employed by a resident cutting down trees in the Playing Field, can we respectfully remind residents that the playing field is not their land, is not



a dumping ground for their garden waste and access to and from their gardens is with the permission of the Playing Field Committee.

Could we also request to our neighbours that whilst we appreciate that having cricket and tennis balls landing in their gardens can be a frustration we would appreciate you throwing them back if you find them!

Finally, just wanted to say that we already have our first bookings to use the pavilion for parties in the summer. It is a brilliant place to have a party, with space to let your children and their friends charge about after being fuelled with party tea or have an evening BBQ with friends. A bargain at £25 a day for the pavilion. Please contact Marion for details: 07796 544565 or marion@nmc2.co.uk

Neil Carpenter
neil@nmc2.co.uk
01373 832314
07919 057997

One Team

Community policing

Warminster Town and Villages combined (Area Board)

January data

January showed a total of 129 crimes for the whole Warminster Area Board region against the average of 120.6 for this same month over the last two years. This is within the parameters we would reasonably expect.

ER12 – Warminster Rural and Villages Beat

January 2019 showed a total of 58 crimes for the ER12 area against the average of 40 for this same month over the last two years. There are no exceptions within the data, except for Criminal damage*. The 5 largest crime groups accounted for 98% of this recorded crime as follows;

- Criminal damage showed 26 crimes compared to the average of 5
- Violence Against the person showed 14 crimes compared to the average of 9.5
- Theft showed 6 crimes compared to the average of 9.2
- Burglary showed 8 crimes compared to the average of 6.4
- Vehicle offences showed 1 crime compared to the average of 5.6

*Of the criminal damage offences, 14 of these relate to one Nursing Home who have reported 12 months of historical damages in one phone call (rather than reporting them at the time).

Local crimes of note

Burglary

24th January, Huntenhull Lane, Chapmanslade

Overnight on the 23rd January a suspect smashed all windows of a stables. Entry was gained through an insecure door. A messy search took place and horse medication stolen: Bute, Danalon granules and two shelves of Metformin.

Burglary

19th January, The Hollow, Corsley

Overnight on the 17th Jan suspect(s) removed the padlock from a garden shed by unknown means, however nothing believed stolen.

Vehicle offence

15th January, Sturford Lane, Corsley

Sometime between 9am-11.45am suspect(s) entered an insecure work van whilst parked on private driveway. Various garden tools were stolen; Stihl leaf blower, Stihl hedge cutter with various attachment blades, Stihl chain saw attachment plus extension.

Crime - Theft

12th January, Huntenhull Lane, Corsley

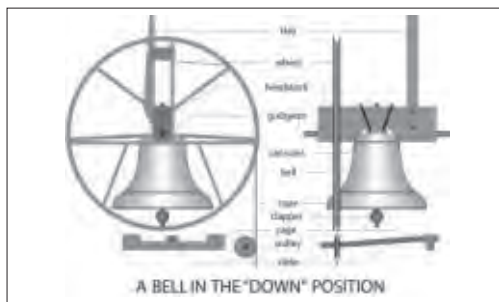
Sometime between 10.30am and 3pm on the 12th Jan a suspect stole an electric horse prod from the middle of a field.

Campanology news

Once again I have good and bad news regarding the repairs to the bells! The removal started week beginning 4th February and took only three days to complete. All went without any problems

and the bells were safely transported to the founder, Matthew Higby's works in Chilcompton.

Now for the bad news! On close inspection of the bells it has been found that the original timber headstocks, the blocks from which the bells are hung, are sagging and the gudgeons, on which the bells swing, are out of alignment. The timber has also softened over the many years they have been in the tower making secure attachment of the bolts difficult. This means that they have to be replaced with new steel ones at



a cost of approximately
£7000.

Also an amendment to the faculty, the permission for work to be carried out to the bells, given by the Chancellor must be sought.

It is very early days

but I am in the process of seeking grants and donations to cover this work and trust that this hiccough will not greatly delay the re-installation of the bells which was planned somewhere towards the end of March.

It certainly highlights one reason why the bells are in some instances difficult to ring in the manner we would wish and once done should make ringing the bells in the future a really enjoyable experience.

Marion Moldon
01373 832672

Corsley Show Quiz Night

Thursday 2nd May
Royal Oak, Corsley

Proceeds from the quiz will go towards sponsorship of the Horticulture and Crafts competitions

Chapmanslade Motor Services

**Vehicle repair
and servicing**

**Brake
specialist**

**MOT preparation
and repairs**



**Batteries
Exhausts
Tyres**



Quality service at competitive rates

FREE ~ wheel balancing and tracking with new tyres

FREE ~ courtesy car

Electronic diagnostics available – most makes covered

Green Farm Industrial Estate, Chapmanslade

01373 832188 or 07711 256927





**01373
455911**

CLEANING & MAINTENANCE 2000 LTD

OUR SERVICES INCLUDE

- Domestic Cleaning
- Commercial Cleaning
- Upholstery Cleaning
 - Carpet Cleaning
- One off Spring Cleans
- Garden Maintenance
 - Home & Garden Clearance

 www.busybees2000.co.uk 
info@busybees2000.co.uk

**JOHN E S JONES
& SON LTD**

**GENERAL
BUILDER**



Carpentry, painting and
decorating, extensions, uPVC,
facias and gutters, fencing,
decking and patios

Please call

01373 832600

07795 177920

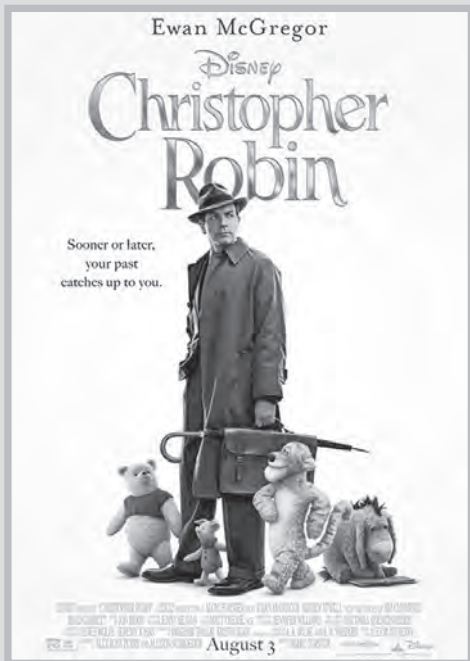
07810 646335

Cinema Corsley

Thursday 21st March

Christopher Robin

Certificate PG, running time 1hr 44mins



Allow yourself to relive your childhood with a grown-up, overworked Christopher Robin when he is reunited with the friends of his, and probably our, youth.

Now a husband and father, Christopher Robin is working far too hard for a family firm, charged with increasing efficiencies

to save his colleagues' jobs. As a result, he emulates the reason the luggage company is in strife by not going on holiday in order to continue working. His increasingly despairing wife and daughter leave him behind with his paperwork.

An unexpected reunion with a lost Pooh leads to some endearing mishaps together in London before the two of them return to Hundred Acre Wood to find the rest of their friends. All the old characters appear – Piglet, Eeyore, Tigger, Owl, Kanga and Roo. Through their misadventures and suitably far-fetched fun, they all, together with Christopher's wife and daughter, help Christopher save the company.

Critics are undecided whether this is a film for children or adults, so maybe it is both, and if you enjoyed Paddington 2 with us last year, you're going to be treated to another evening of old friends having new adventures. Be prepared for a mixture of nostalgia and feel-good humour.

Doors open 7pm for a 7.30pm start at Corsley Reading Room. Tickets £6 from Acres Supply (cash only) or on the door. Refreshments and a licensed bar.

Thursday 25th April

Free Solo

Certificate 12A, running time 1hr 40mins

Winning the 2019 BAFTA award for best documentary earlier this year, Free Solo documents the jaw-dropping feat of climber, Alex Honnold, attempting to scale the face of 1000m high El Capitan in Yosemite... without a rope. Stomach-turning athleticism combined with award-winning photography make for an edge-of-the-seat experience.



TEA & sympathy

Considerate catering at a difficult time

All our food is homemade, we provide delicious teas, sandwiches and cakes through to more elaborate options.

We offer a truly bespoke, caring and professional service.



Telephone Kim Clark on 01373 832151 or 07843 056916

e-mail kim@teaandsympathy.uk.com

www.teaandsympathy.uk.com

CHANTRY CONSTRUCTION

stone walling • patios

drives • extensions

prompt reliable service

mini digger and driver for hire

01373 836787 07855 343388

COMPUTER & LAPTOP REPAIRS
UPGRADES / SYSTEMS & LAPTOPS

VIRUS REMOVAL / BROADBAND
WIRELESS / NETWORKING



FAST, FRIENDLY, PROFESSIONAL SERVICE
COMPETITIVE RATES
ONSITE OR WORKSHOP

CCO CompTIA

call
01373 302901

www.ntscomputing.co.uk
help@ntscomputing.co.uk

LAPTOP REPAIRS

We also replace
laptop screens,
keyboards,
CD-DVD drives,
fix overheating
and more

Forget-me-not

• GARDENING SERVICE •



Weeding, pruning, planting,
fence painting, etc

01373 464416

07890 850465

Do you need a plumber? Call...



Paul Antell Plumbing

07890 366832

01373 467427

Professional, reliable, friendly and local
paulantellplumbing@talktalk.net
www.paulantellplumbing.co.uk

Hypnotherapy for you!

Solution Focused Hypnotherapy is a safe, practical therapy and can help you to:

- Feel better about yourself
- Achieve work, play, lifestyle balance
- Improve many areas of your life

Fiona 07801 436633

fiona@balancehypnotherapy.co.uk

www.balancehypnotherapy.co.uk



RICHARD ROBBINS

City and Guilds Trained Gardener

All aspects of Garden work undertaken

07510 130083

Rose Knight

Dog and cat
minding service

01373 464904

07773 435254

knight_rosemary@sky.com



TREVOR & JON *by Amy*

Unisex Hair Salon

01225 754001

trevorandjonbyamy@outlook.com

Unit 2 Stone Mill, Trowbridge BA14 8BU

JD Weed Control

JDweedcontrol@gmail.com

Call James on 07850401547

Free, no obligation quotation

Flower Beds - Patios - Borders - Drives

Non-Chemical Weed Control & Prevention

James, Rob and Adam, former employees of Roger Patch Ltd are pleased to introduce...

CMP Complete Ltd General Builders

19 Swaledale Road, Warminster, BA12 8FH

James 07801 868288

Rob 07766 905131

email cmpcompleteltd@gmail.com

HETAS registered to fit woodburners

Corsley Parish Council

February Briefing

An occasional meeting was held on 11th February to deal with three planning applications, receive reports on regular topics and consider the proposals for further development at Bay Tree Close. The details of the Annual Parish Meeting were also finalised.

Planning applications

18/11731/FUL

Erection of agricultural building for the housing of calves
Malthouse Farm, Court lane, Lyes Green,
An interest was declared by Olly Hares.

This is an application by the Hares Partnership for a building with a 368 m² footprint, similar in style and scale to existing agricultural buildings at Malt House Farm, to be erected in the field immediately opposite the farm yard, with access from Court Lane. It will be used as an isolation unit for TB restricted cattle, primarily calves, housed on deep litter bedding to minimise smell and generation of slurry.

A query had been posted on the planning web site from an adjacent resident, concerning Wiltshire policy on minimum distances between livestock sheds and non-applicant dwellings, but here had been no response at the time of the meeting.

It was unanimously agreed that the PC had no objection to this application, subject to confirmation that the proposed location of the building does not contravene any environmental health regulations concerning

the distance from non-applicant domestic dwellings

18/00934/FUL

Appeal against the refusal of this application by the local authority.

The original application was for removal of Condition 7 pursuant to planning application for Lavender Lodge to be used as a permanent dwelling. It was considered by the PC in March 2018 and an objections was recorded in that "... that there is no evidence to suggest that its continued use as a commercially let holiday rental is not commercially viable". This view was supported by Wiltshire who rejected the application.

In the case of this appeal, the PC had been notified of the opportunity to amplify or change the comments they had made when this application originally came before them, with any new input to be forwarded to the Planning Inspectorate.

It was unanimously agreed that the PC would write to the Inspectorate confirming its previous comments.

19/01106/FUL

Excavation of a wildlife pond with spoil graded over adjacent land at Dye House Farm, Corsley, BA12 7QD

It was unanimously agreed that the PC have no objection to this application.

Traffic and road safety

Community Area Transport Group issues

Corsley Heath safety improvements

The lining, signing and pavement improvements to slow traffic and allow better lines of sight for those pedestrians and drivers crossing the A362 is now a CATG Category 1 item and is at the front of the queue for detailed plans and costings to be completed for the PC's consideration. The PC has budgeted £2,000 in financial year 2019/20 as a contingency to cover the Parish 25% contribution to the cost of the work.

Whitbourne Springs junction

Reduction of vehicle speed on entry to Whitbourne Springs and prevention of vehicles turning back onto the A362 against the one-way system is also now a CATG Priority 1 awaiting planning and costing. This is a lower priority than Corsley Heath and will be significantly more expensive. As this is the alternative Longleat access route to the Safari Park, Longleat will be approached at both County and PC level to assist with the 25% contribution required towards the project cost. The final go-ahead for this project will be subject to Parish Council approval of plans and satisfactory financial arrangements.

Other road issues

Sturford Lane

The lane had become overgrown with tree branches restricting access to larger vehicles. In addition, there was a large dead tree requiring removal. The obstructing wood, dead wood and an overgrown hedge have now been removed or reduced to allow the required 5.2m clear envelope over the road between Chatter Alley and the A362 junction. The dead tree has been contracted for removal, but the work has

not yet been done. There still remains some work to be completed between Chatter Alley and Temple, but the most demanding part has been completed.

Sydalls Lane

The dead tree halfway up awaits removal. Longleat have placed a contract for this to be done.

Court Lane

There is a long-standing problem arising from road run-off water entering Court Lane at its eastern end, flooding into driveways and gardens. Two years ago discussions with Wiltshire produced some action to mitigate water coming off the field by the bridleway and regular attention to drainage at the eastern end of Court lane. The issue has been raised again and the Council Field Drainage Team and Area Engineer have now revisited the location and given a different interpretation of the law in relation to field drainage. The PC awaits confirmation of this in writing before promulgation. It also appears they may be willing to put a temporary extension of the 'nose' at the junction between the main lane and Court Lane in an attempt to divert water away from Court Lane. This would use cement bags backed by earth and if successful would go onto a prioritised list of projects for funding by the Field Drainage Team as a proper masonry-based solution.

White lining – Lane End

Work in repairing the junction markings has been promised in the spring. The Lane End junction, which is seriously eroded has been given as the PCs priority.

Signing

Funding has been made available to rectify the backlog of work on replacing damaged signs. Again, this will happen in the spring.

(continued...)

Currently Corsley is waiting for: Corsley St Margaret's, fingerpost; Fuzzy Hill, Dertford fingerpost; A362 'slow' sign at Corsley Heath western gateway.

Housing development at Baytree Close

As previously reported, Wiltshire are looking to build 49 houses across their 16 owned sites in the County. Baytree Close is one of these sites and Wiltshire is proposing that the site be further developed. The site is classified as a "Rural Exception site", meaning that there are constraints on development which restrict building to Wiltshire funded and built "affordable housing", subject to local support and a confirmation of need. Occupants for the houses are restricted to those on the Housing Register.

No details are yet available for the exact nature of the proposed development, but, from preliminary meetings between the PC and Wiltshire, it is likely to be a mixed development which, for example, could include a terrace of 2 bedroom houses and several rental schemes could be available. It was agreed that the PC would support the further development of the Baytree Close site, and also the circulation of a housing needs survey. The PC also confirmed its plans to invite officers of the local authority to attend the Annual Parish Meeting (APM) to further clarify the opportunity and seek wider support from the village.

Other development of the Baytree site

In addition to discussions specifically on Baytree, the PC has also had informal discussions with Wiltshire on other avenues for development in the village. As regards Baytree, as already explained, the nature of the site and the associated planning policy precludes it being available for 'open market' development, unless the site is not viable without a so called "cross subsidy",

i.e. developer input. This is not the case for the proposed new development, which would be fully funded by Wiltshire and government funding.

Within the village there is anecdotal evidence to suggest that there may be a need for development of mixed properties available for sale. However, there is very little land available for development within the current settlement boundaries, i.e. the areas within which Wiltshire planning policies could allow resident development. For the settlement boundaries to be extended, or other blocks of land to be identified for development, the village would have to develop a Neighbourhood Plan, for which there was no enthusiasm when this was last mooted at a public village meeting. However, with a Housing Needs Survey soon to be launched in Corsley to establish the needs basis for Council funded housing, the PC agreed that it would be wise to establish, through the same questionnaire, whether there was an actual need for open market housing of similar nature to the Baytree developments. This would be achieved through additional questions be put in the Housing Needs Survey. Wiltshire were content for this to take place and suitable questions have been forwarded.

Old School Playing Field (OSPF)

Neil Carpenter and his team have now planted 21 fruit trees on the OSPF as the initial section of the fruit orchard. 13 more trees are planned for the year, mostly Corsley Pippin Apples kindly donated by Mr Paul Evemy of Longhedge. This planting will be subject to successful grant applications to three Corsley organisations (see also PC grants below). The PC also agreed to fund an explanatory sign at the OSPF.

Grants and donations

Four applications for grants/donations had been received and the amounts agreed were:

Corsley Reading Room	£1250
PCC	(Running costs) £1250
CWMPF	(open graveyard maintenance) £1200
OSPF Orchard	(insurance and OSPF mowing) £300
	(protection for planted trees)

Annual Parish Meeting (APM)

6.30pm, Monday 4th March

Corsley Reading Room (upper room)

Full details can be found in the advert to elsewhere in this edition of The Bridge.

Speakers

Andy Mead and Sean Tye from the Wiltshire Strategic Assets Team to brief us on the new Baytree Close proposals, with particular emphasis on getting village support.

Jon Timney, Longleat's new Director of Property and Maintenance, to present Longleat's plans for the future. I have asked him to be ready to answer questions on any and all interfaces between Corsley and Longleat, particularly Longleat's impact on local traffic, ticketing and access policy, future of the Caravan Club site, Tascroft Court Development, development of the property portfolio in Corsley (e.g. the Longleat Tavern, ex White Hart) and, of course, the plans for the park attractions.

Future Meetings

Annual Parish Meeting	4th March
Annual Parish Council Meeting	13th May
	(election of Chair/Vice Chair)
Quarterly Meeting	3rd June
Quarterly Meeting	2nd September
Quarterly Meeting	2nd December
All meetings at 7.30 pm except Annual Parish Meeting which is at 6.30 pm.	

Neil Britten, Chairman
 pc.corsleynb@gmail.com
 01373832515 or 07810764714

Corsley Show Charitable Trust

Grants and awards

**This year's big giveaway is
£2,600!**

Following receipt of a number of applications, the trustees have made grants/awards to a number of organisations.

Awards were made to:

- Chapmanslade Players (microphones)
- Chapmanslade Brownies (skills kits)
- Memorial Playing Field (skittle alley)
- St Margaret's Organ Restoration Fund
- Corsley Village Orchard
- Chapmanslade Community Action Plan (production costs)
- Little Cuckoos (garden).

It has been decided to invite further applications in May when some additional small awards may be made. Details on how to apply will be in April/May editions of The Bridge and on the website hdwebsites.wixsite.com/cstrust

For up-to-date information such as occasional parish council meetings, church services, previous editions of The Bridge, local clubs and activities, business listings, and other useful information, please visit

www.corsleyandthebridge.co.uk

Want something added? Just email the Editor with your request!

Piano Lessons

All standards welcome

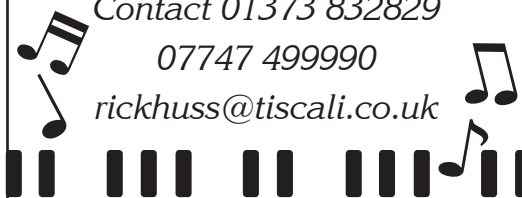
Debbie Rickhuss

Teacher of Pianoforte and Theory

Contact 01373 832829

07747 499990

rickhuss@tiscali.co.uk



M W Garden Services

20+ years experience

A tailor made service for all types of garden maintenance

Insured and CBI's checked

mark22.weaver@mypostoffice.co.uk

Telephone 01373 832854

Mobile 07921 818452

Dashing Dusters

- Cleaning and ironing to a high standard
- General domestic assistance
- Commercial cleaning
- Reliable
- Reasonable rates
- References available

01373 832484 (evenings)

JERRY RAYNER :
boiler maintenance

01985 841461 or 07775 755981

FOR SERVICING AND BREAKDOWN
OF OIL BOILERS

also AGA and RAYBURN

- Competitive rates
- Friendly, helpful and efficient
- Call now for a quote



First Aid & Compliance Training Ltd

Training for the workplace and home.

Wide range of accredited
First Aid, Health & Safety, Fire Safety
& Food Safety courses

www.factltd.co.uk

T: 01985 302562



Whitbourne Chapel

Jesus said: He who has seen me has seen the Father. John 14:9

Now that I am old...

It is said that in the early Middle Ages it was possible for a well-educated person to know everything there was to know! When I was a child I loved finding out about things. As I grew older I began to realise how vast is the sum of human knowledge, how every branch of knowledge is infinitely bigger than any one person can comprehend, and what's more, the total amount of stuff to know is growing all the time. Wow !

Now that I am old, I hope a bit humbler and with a creaky old brain, I have given up trying to keep pace with modern technologies.

But God is vastly more complex than all these advances. Johannes Kepler, the German scientist said that we just think God's thoughts after Him. A human being cannot comprehend the infinite mystery of God.

The only way we can know God is if He shows us what He wants us to know about Himself. And He has done that in Jesus. Jesus is God in language we can understand. Jesus, the Word of God, God mysteriously become man, shows us God Himself. God as Man understanding you and me completely, having suffered, being despised, loving children, hating hypocrisy, caring for the lowest in society, demonstrating His power over natural forces, illness and death.

What is God like ? God is like Jesus. Do you know Him ? Do you trust Him ?

Roger Hopwood

A distant memory

Hopefully, that's what the snow of early February will be, by the time your copy of this month's Bridge reaches you! How did you cope with those few dazzling white days? Did you get out and about in the snow, perhaps sledging down Corsley and Chapmanslade's slippery hilly slopes? Were you able to use a vehicle and not really be inconvenienced, or were you like me, confined to barracks for the duration? Whatever you did, however you coped, I hope you were able to look upon 'the white stuff' as another of God's great and wonderful gifts to us all.

Gill Redman

And lastly...

Chris Andrews was one of February's preachers. He told us: "We are adopted by God." God handpicked us and once we are truly saved, we can never go back to our old lives. He took great pleasure in choosing us.

James Mead.

*Gill Redman 01985 215062
paradiselost@btinternet.com*

Regular times

Services every Sunday morning at 11.00 for about an hour (coffee served at 10.45)

Chapel Prayer meeting every Sunday morning from 10.20 - 10.40

Communion on the first Sunday of each month at 12 noon for 15 minutes

Bible study sessions as announced



COMPUTER PROBLEMS?

01373 812804

Email
Advice for new users
Anti-virus defence
Web sites
Custom programming

Networks - home & office
Home tuition
Web access
Privacy & security
Repairs

www.technojeeves.com

info@technojeeves.com



Local Electrician

All Domestic and Commercial Work Undertaken
Part "P" Registered NAPIT Approved "Full Scope" Installer
Fixed Wire Electrical Testing and Thermal Imaging Reports

Portable Appliance Testing

Aico Approved Installer for Fire detection

Service/Maintenance Contracts Available

Call us on:

01749 850769 or 07779 429786

Email: ian@fushi-electrical.co.uk

www.fushi-electrical.co.uk



E G MARTIN LTD Heating Oil Distributors

Telephone 01373 822784

Victory Road, West Wiltshire Trading Estate
Westbury, Wiltshire, BA13 4JL

WESTERN SKIP HIRE

Telephone 01373 813132

Victory Road, West Wiltshire Trading Estate
Westbury, Wiltshire, BA13 4JL



Windows, Doors & Conservatories

- Free quotes from our local experts
- Strengthen your home's security
- Reduce your heating bills
- Excellent offers

up to
45% OFF
selected
WINDOWS & DOORS

01985 215566
www.newwindowsltd.co.uk

**New
Windows**



Cross Keys News

A community Free House



sandwiches and chips at £3. The money raised will go towards our defibrillator fund.

Your support is very much appreciated during this challenging period. We hope to return to a full service in the very near future. Please check the website www.crosskeyscorsley.co.uk or our Facebook page Cross Keys Inn Corsley for details or contact the pub on 01373 832406.

We look forward to seeing you soon.

Following the departure of our managers Adelle and Steve in January, we are operating reduced services and hours on a temporary basis (see below). We are actively seeking a means to provide food again and anticipate being able to cover some sessions by the time this issue goes to print.

As soon as we have any information it will be put on the website and Facebook so please keep a weathered eye out for news.

We will of course have our monthly **Quiz** on **Sunday 24th March** for teams of up to 6 people. £2 per person with pre-booked

Temporary opening hours Drinks only – NO food

Monday

6 pm to 10 pm

Tuesday

Closed all day

Wednesday to Saturday

6 pm to 10 pm

Sunday

12 noon to 3 pm

Corsley Show Pre-Schedule is out now!

Visit our website

www.corsleyshow.org.uk

to download a pdf of the pre-schedule and get growing, crafting, painting, sculpting, metalworking, modelmaking, knitting, sewing, pickling, brewing, woodworking, leatherworking, crocheting, weaving...

Wren House

Residence for the retired and elderly

Wren House in Warminster is a long-established, elegant retirement home, specialising in individual care in gracious surroundings. Having just thirteen rooms, each with a private bathroom, we are able to offer the ambience of a family home, together with caring staff and the facilities to enable our residents to enjoy their later years with dignity.

Wren House serves fresh, locally-sourced, home-cooked food. Residents enjoy a varied activity programme which includes a gardening club and our own choir.

Mrs Ellie Simmonds

Wren House Ltd, 32 Vicarage Street, Warminster, BA12 8JF

Telephone 01985 212578

wrenhousewarminster@hotmail.com

www.wrenhousewarminster.co.uk

ST DAVIDS WHITSAND BAY CORNWALL



Holiday Let
Sleeps up to 8
01373 464870

www.stdavidswhitsand.co.uk



Joe Ricks
Independent Financial Adviser

*Pensions, Retirement Planning, Equity Release,
Wealth Management, Mortgages, Financial Protection*

07828 860 018 joe@matherandmurray.co.uk

www.matherandmurray.co.uk

Paul Ledbury Quality Painting and Decorating

30 years experience

**INTERIOR AND EXTERIOR
GENERAL MAINTENANCE**

5 Hampshire Gardens
Westbury, Wiltshire
BA13 3EX

**Telephone 01373 858163
Mobile 07976 242045**

TOENAIL CUTTING REFLEXOLOGY

IN YOUR OWN HOME

ALICE LEWIS

Telephone 01373 229335



Karina

Mobile Hairdresser

Tel. 01373 832823

Mob. 07742 690337

Your Local Electrical and Property Services

**LAWRENCE
FAIRFIELD**
Limited

Professional, reliable & understanding with over 40 years experience

Call or email now for a free quote

01373 464577

enquiries@lawrencefairfield.co.uk

www.lawrencefairfield.co.uk



**allsorts
OF
FENCING**

Your local Fencing Specialist

Stock Wire / Post and Rail / Close board
Decking / Patios / Gates / Sheds / Pergola

www.allsortsoffencing.com

01373 832339 / 07710 180551

Also: Topping of Fields and Paddocks

Seasoned Logs

free local delivery

Tel / text Garry on 07801 179917

loads from £120

Seasoned hardwood logs within a 15 mile
radius of Frome. All timber is ethically
sourced from local woodlands

We can supply hard- and soft-wood
mixed loads or hardwood only

www.woodlandworks.co.uk



KB Landscape

30 years in landscaping

Phone

01373 832371

Mobile

07951 297173

Kevin Brixey - for quality and experience

5 Red Cottages Corsley Warminster Wiltshire BA12 7PS

Landscaping
Patios and paths
Turfing and seeding
Brick and stone walling
Decking and pergolas
Block paving
Gravel drives
Pond work
Fencing

A view from over the hedge...

Countryside Matters

February 2019 has thrown everything at us in the form of changeable weather

Our village experienced the most amount of snow I have known in nearly 30 years; constant snow for 24 hours, with between 8"-10 "settling, then freezing.

The sheer beauty of it will, I'm sure, be captured by many photographers and the fact that it came and went in three days including a weekend meant that children had an enjoyable day off from school. Those travelling to work could either do it from home or had a valid excuse for a day off!

Our reliable national and regional weather forecasters gave farmers due warning but sadly those organisations that form part of the food chain such as milk tankers collecting from the farms found it unbelievable. Farm staff would work 16-18 hours a day to milk and feed livestock and keep essential roads passable only to find the logistics team working out milk pickup times should be 3am, breaking up the 4-6 hours sleeping time, the coldest time of the night and requiring at least one or two members of staff with tractors to pull the tanker in and out of the farm.

Thankfully by Monday afternoon the snow had gone and temperature was 8°, birds that had sheltered emerged needing food, the snowdrops appeared as if by magic and within days the daffodils planted on our verges were upright and bursting into flower.

Early spring calving is in full swing and the careful rationing of precious home-produced feedstuffs, more out-wintering of

young stock on root crops and extra purchased food has kept the herd

in good health through what we hope will be the worst part of the winter.

No doubt that old saying 'Don't cast a clout till May is out', will still keep farmers looking at the daily weather forecast knowing that winter is never over until it's over, which could mean the end of April.

As well as calves being born in the comfort of warm barns, shepherds are being kept busy with lambing over the next month or so. May I remind all dog walkers that keeping dogs on leads whilst walking over fields with sheep is essential.

For real beauty you cannot beat our woodlands and verges as spring arrives; birds and mammals are seen and heard, plant life such as catkins, willow, blackthorn, and sticky buds on horse chestnuts emerge and the fresh green of willow and beech leaves as they burst into colour is amazing. In the woodlands the winter duvet of leaves rustle as bluebells and many woodland plants come to life again.

Let's enjoy the seasons as they come, without winter we would not enjoy our spring quite as much.

Judith Helliar



Corsley Reading Room

Your 'village hall'

Cinema Corsley

Our next film on Thursday 21st March is 'Christopher Robin' featuring Winnie-the-Pooh see advert in this Bridge for more info.

Folk Night

The highlight for March will be the Folk Night on Saturday 16th.

IT Club/ Sessions/Silver Surfers

The next session is on March 27th. 10 am to 12 noon, in the lower room. £3 per person. Coffee or tea and a biscuit included! All welcome!

Hall improvements

Users of the kitchen may like to know that there is now a complete list of what can be found in which cupboard/ drawer to help you find what you want. It would be appreciated if this list was also used this list to put things back in the right place to help the next user!

www.corsleyreadingroom.org.uk

Folk Night Saturday 16th March

Come and enjoy a wonderful evening of music and singing with local girl Rosie Butler-Hall accompanied by William on accordion. Rosie toured internationally with her previous partner.



7.30 pm for 8 pm

Bar and snacks available

Tickets £8 in advance or
£10 on the door (if not sold out)

Tickets from Acres Supply or Vanessa
Hyde 01373 832700 or 07740 468003
or treasurer@corsleyreadingroom.org.uk

Events run by the Corsley Reading Room Management Committee

Coffee Morning:

First Tuesday of the month 10 am - 12 noon

IT Classes/Club: Wednesday 27th March

Cinema Corsley: 'Christopher Robin'

Thursday 21st March, 7 pm for 7.30 pm start

Regular events run by other organisations

Lite Bites Lunches: 4th Wednesday of the month

Yoga: Tuesday and Wednesday evenings

Pilates: Tuesday afternoons

WI: second Thursday of the month (evening)

Small ads

£1 for EACH item for sale or wanted (cash only please) - at one of the two drop-off locations)

Please note: no cash, no advert!

FOR SALE

Dropleaf table – hardwood (dark oak) circa 1920-30's. Size (closed) 46cm x 104cm; size (open) 104cm x 132cm. **Four chairs** in need of a little attention included – **£50**.

01373 832170

Traditional Mole Catcher

07512 681111

01373 836350



Answers to Bob's Bafflers

- 1 Gardening
- 2 A year and a day
- 3 Uruguay
- 4 Godot
- 5 Wilton – after which the county is named
- 6 101 Dalmatians
- 7 Hand for hand, foot for foot
- 8 Jupiter
- 9 40
- 10 There is no speed limit
- 11 Brussels sprouts (not for me thank you!)
- 12 None – according to the Bible, it was Noah who had the ark!

Local organisation adverts

£2 per month for a small boxed advert or £7.50 for a full page. Full page adverts are allocated depending on space available and cannot be guaranteed. All monies must be at one of the two drop-off locations (Barter's Plant Centre or Acres Supply Garden Centre) by **4pm** on the **19th** of the month. Please note: no cash, no advert!

Trade advertising

Annual trade advertisements (12 issues, when space is available)

1 space	(69mm wide x 33mm high)	£22.00
2 spaces	(69mm wide x 66mm high)	£42.00
3 spaces	(quarter page - 69mm wide x 100mm high)	£60.00
4 spaces	(138mm wide x 66mm high)	£75.00
6 spaces	(half page - 138mm wide x 100mm high)	£104.00

Trade advertisement material should be supplied in print-ready format, to the chosen standard size and correct shape.

For trade advertising enquiries, please contact David James (Trade advert coordinator/Treasurer) at either thebridge832@gmail.com or 01373 832443.

Darling Interiors

Made to measure Curtains & Blinds • Bedspreads • Tracks & Poles • Fitting • Competitive Pricing

Chosen in the comfort of your own home

Choosing new furnishings has never been simpler. We have an extensive range of exquisite fabrics from leading designers and suppliers to choose from. For the finishing touch, we can provide beautifully crafted tracks and poles from the Bradley range and other leading brands measured to fit different sizes of bay windows and straight windows.

Call today to book your FREE No Obligation Consultation



t: 01373 672 359 e: info@darling-interiors.co.uk w: www.darling-interiors.co.uk

cloud
homecare

Quality care and
support in Warminster
and the surrounding
villages



We are a small, Corsley based care provider

**We provide care to people who need support
to remain living in their own home**

**Please telephone or email us, or visit our
website for further details**

Tel. 01373 832 597 enquiries@cloudhomecare.co.uk
www.cloudhomecare.co.uk



**Winter: the perfect time
to cosy up by the fire and
plan your garden for the
spring and summer...**

**Turf & Topsoil
Seeds & Bulbs
Pots & Statuary
Paving & Gravel
Ponds & Fish**

01373 832591
www.acressupply.com
info@acressupply.com

*Your local, independent
garden and aquatic centre
Open 7 days a week*

**Acres Supply
Corsley
BA12 7PP**

FG COLLIER

KITCHENS • BATHROOMS • INTERIORS

WHOLE HOUSE DESIGN & SOLUTIONS



FG COLLIER LTD 29-35 EDWARD STREET WESTBURY WILTSHIRE BA13 3BL
TEL 01373 822227 EMAIL [INFO@FGCOLLIER.COM](mailto:info@fgcollier.com) WEB [FGCOLLIER.COM](http://fgcollier.com)