

# The Bridge

March 2015

monthly magazine for the villages  
of Corsley and Chapmanslade



Don't  
forget to put  
your clocks  
**forward**  
on Sunday  
March 29th

*Say 'goodbye' to winter, spring is finally here!*

# Castle Care Wessex

***Because your home is your castle***



## **CARE IN YOUR OWN HOME**

We are a mother and daughter team running a professional, friendly agency specialising in:

### ***24 hour live-in care***

Helping loved ones stay in their own home, maintaining their independence.

### ***Domiciliary Care***

For short periods of time, perfect for clients who enjoy their independence but appreciate a helping hand.

For more information telephone 01373 836767

email: [castlecarewessex@btconnect.com](mailto:castlecarewessex@btconnect.com)

[www.castlecarewessex.com](http://www.castlecarewessex.com)



## **Frome Heating Specialists**

**M A Knight**

**01373 832578**

**Heating and plumbing engineers specialising in:**

Solar heating

Oil and gas boiler servicing

Boiler replacement

Energy management

Pressurised hot water systems

Underfloor heating systems



Reg. 199876



Reg. C1211

Family business established 1964

Stavanger, Corsley, Nr Warminster, Wiltshire, BA12 7QL

# The Bridge

monthly magazine for the villages of Corsley and Chapmanslade

## Articles

Please submit articles either by email to [viv.thomas146@btinternet.com](mailto:viv.thomas146@btinternet.com) or by hand (legible handwriting please!) and take them to the drop-off locations at Barbers Plant Centre, Chapmanslade, or Acres Supply Garden Centre, Corsley by the deadline.

News, reports, updates, thank you's, etc, from individuals or local organisations are free – the more the merrier – keep 'em coming!

## File types

Save your files as .doc – please don't send .docx files – I can't always open them successfully.

## Advertising

**Small ads** are £1 for each item whether 'For Sale' or 'Wanted'.

**Events/local organisation ads** (churches, clubs, playgroups, etc) are £2 per month for a boxed advert.

**Full page ads** cost £7.50, are subject to space availability and cannot be guaranteed,

If you are advertising, don't forget to take the fee – cash or cheque in a sealed envelope please, to either of the drop-off points (Barbers Plant Centre or Acres Supply).

**Please note: no cash, no advert!**

## Trade advertising

Please see information on the last page.

## In this issue...

- 8 Bob's Bafflers**  
a cunning quiz
- 11 Road closures**  
water divination
- 16 Parish Council briefing**  
Corsley
- Three Open Doors**  
news from the pews **21**
- Corsley WI**  
news from the ladies **26**
- From the potting shed**  
sow and sow **29**
- 32 Parish Council briefing**  
Chapmanslade
- 37 Whitbourne Chapel**  
chapel colloquy
- 42 Countryside matters**  
views from over the hedge

## Deadline

**Deadline for articles  
or adverts for the next  
issue of The Bridge is  
4pm 19th March**

**Please note that no  
items will be accepted  
after this date**

---

## March

### Tuesday 3rd

Coffee Morning – 10am - 12 noon, Corsley Reading Room

### Thursday 5th

Warminster mobile library (see page 35 for times)

Warminster Area Board – 7.00pm, Warminster Civic Centre

Chapmanslade Loose Women - Social Evening – 7.30, Eden House, 89 High Street.

### Saturday 7th

Corsley litter pick – 10.00, meet opposite the Royal Oak

### Wednesday 11th

Corsley Parish Council - Annual Parish Meeting – 6.30pm, Corsley Reading Room

### Thursday 12th

Corsley WI - Annual Meeting – 2.30pm, Corsley Reading Room

Chapmanslade Parish Council – 7.30pm, Chapmanslade School

### Saturday 14th

Chapmanslade Litter Pick – 12 noon, meet opposite The Three Horseshoes

### Sunday 15th

Short talks (10 - 15 minutes each) on a variety of subjects plus carpet bowls and other activities with an afternoon tea – 2-5pm, Corsley Reading Room (FREE event - just turn up)

### Wednesday 18th

Corsley Gardening Club - Talk on Clematis – 2.30pm, Corsley Reading Room

Parochial Church Council – 7.30pm, St Margaret's Church

### Thursday 19th

Warminster mobile library (see page 35 for times)

Church and Community Coffee Morning – 10.00am - noon, The Three Horseshoes, Chapmanslade

Corsley Show Extraordinary Meeting – 7.30pm, Corsley Reading Room (Committee Members and Society Members)

### Friday 20th

Irish Night – 7 - 11pm, Corsley Reading Room

### Saturday 21st

Barn Dance – Chapmanslade Village Hall – Supper at 7pm prompt

Barn Dance – Frome Friends for Dorothy House, Rye Hill Barn, Longbridge Deverill



# Diary Dates

---

## Wednesday 25th

Light Bites Lunch – 12.30 - 1.30pm, Corsley Reading Room

## April

### Thursday 2nd

Warminster mobile library (see page 35 for times)

Quiz Night – 7.30pm, Royal Oak, Corsley - to raise money for the Corsley Show

### Good Friday 3rd

Little Cuckoo's Easter Egg Hunt

Chapmanslade Loose Women – speaker from Wilts and Swindon History Centre – 7.30pm

The Three Horseshoes (upstairs)

### Saturday 4th

Corsley litter pick – 10.00, meet opposite the Royal Oak

### Tuesday 7th

Coffee Morning – 10am - 12 noon, Corsley Reading Room

### Thursday 9th

Corsley WI - 'Making Felt Brooches' – 7.30pm, Corsley Reading Room

Chapmanslade Parish Council - Annual Meeting – 7.30pm, Chapmanslade School

### Saturday 12th

Chapmanslade Litter Pick – 12 noon, meet opposite The Three Horseshoes

### Wednesday 15th

Corsley Gardening Club - visit to Ridley's Cheer – 2.30pm (entry £7)

Annual Parochial Church Meeting – 7.30pm, Chapmanslade School

### Thursday 16th

Warminster mobile library (see page 35 for times)

Church and Community Coffee Morning – 10.00am - noon, The Three Horseshoes, Chapmanslade

### Wednesday 22nd

Light Bites Lunch – 12.30 - 1.30pm, Corsley Reading Room

### Thursday 30th

Warminster mobile library (see page 35 for times)

Warminster Area Board – 7.00pm, Warminster Civic Centre

*continued...*



# Health and Wellbeing in Corsley

## FREE! Short Talks

(10 minute talks by local people) plus carpet bowls and other activities with an afternoon tea

2 - 5pm, 15th March  
Corsley Reading Room

### FREE! Just turn up!

Any question? Ask either

Barbara 01373 832273

Dot 01373 832059, or

Marion 01373 832314

marion@nmc2.co.uk



Chapmanslade Village Hall  
Back by popular request...

## Barn Dance!

Saturday 21st March

Live caller and music

Hot two-course supper -  
prompt at 7pm

Licensed bar

Adults £12, Under 14s £6

Tickets from Denise Page  
01373 832485

(or any committee member)



## Litter pickers

### Chapmanslade litter pickers

We will be meeting opposite the Three Horseshoes at noon on Saturday 14th March. We provide all the necessary equipment and spend about an hour or so collecting litter from the High Street and surrounding area.

*Phil Jefferson*  
01373 832845

### Corsley litter pickers

We meet opposite the Royal Oak at 10am on the first Saturday of each month. Our next 'pick' is on Saturday 7th March – do come along and help keep our village beautiful.

*Cath Aylesbury and Sue Taylor*



# Pears Electricians

Nigel Charteris - BSc (Hons) M.I.E.T.



## Professional Local Electrician

A HIGH STANDARD OF WORK AT REASONABLE RATES

Part P registered with [www.napit.org.uk](http://www.napit.org.uk) - Testimonials and references available

**Faults & Troubleshooting • Repairs & Improvements**  
**Installation Condition Reports • Boiler Wiring**

[www.pearselectrical.co.uk](http://www.pearselectrical.co.uk)

**01985 213314 or 07717 534026**



## OAKLEY

### GARDEN MACHINERY

Grove Lane, Marston Trading Estate  
 Frome, BA11 4AT

Hayter  
 Mountfield  
 Lawn King  
 Westwood  
 Stihl  
 Honda  
 Toro  
 Echo  
 Husqvarna  
 Shindalwa  
 Oregon  
 and more...



**For Sales, Spares,  
 Workshop Service  
 and Repairs**

[www.oakleyfrome.co.uk](http://www.oakleyfrome.co.uk)

**01373 467712**

## Lawn Envy

Where the grass is always greener

For the healthy weed free lawn you have  
 always dreamed of.

Book your free lawn consultation  
 01985 221107 - [www.lawnenvy.net](http://www.lawnenvy.net)

## Bride by Design

**Bridal Gowns & Accessories**



2 Silver Street  
 Warminster  
 BA12 8PS

01985 217216

Please contact us to arrange an appointment  
[www.bridebydesign.biz](http://www.bridebydesign.biz)

## STUNNING COASTAL VIEWS ON CORNISH COAST NEAR LOOE

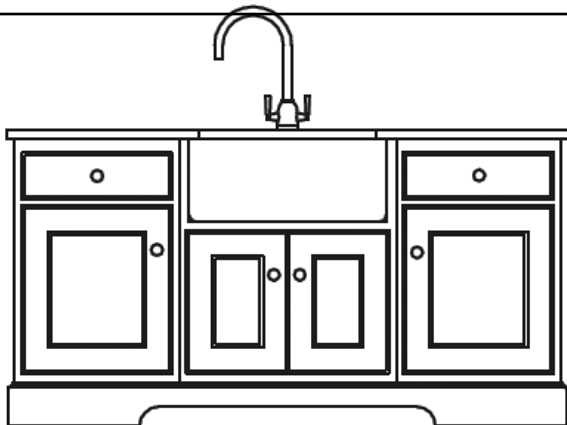


Six bedrooms (sleeps 12)  
 Private access onto beach  
 Pets allowed

Top class facilities including wi-fi  
 Rent for week or even long weekend  
 Downstairs bedroom and shower room

**For more info: Sandy Parrish 01373 832522**

McCulloch  
FURNITURE



Kitchens • Bedrooms • Bathrooms • Libraries  
Studies • Media furniture • Offices • Freestanding

The Workshop, Bruton Lane, Upton Noble, Somerset, BA4 6AH  
Telephone 01749 850000 Fax 01749 850055 Mobile 07887 892633  
enquiries@McCullochfurniture.co.uk  
www.McCullochfurniture.co.uk

## ORCHARD UPHOLSTERY

RE-UPHOLSTERY OF  
ANTIQUE AND MODERN  
FURNITURE

❖ FREE ESTIMATES ❖

COLLECTION AND  
DELIVERY SERVICE

Telephone Lesley  
01373 464870

## Sharon's Foot Clinic

SAC Dip FHPT SAC Dip FHPP



*Fully insured and highly trained*

For the professional treatment of:  
Corns • Callus • Cracked Heels  
Athletes Foot • Fungal Infections  
Thickened Nails • In-growing Nails  
Diabetic Foot Care • Verrucas  
Nail Cutting • Nail Reconstruction

Contact Sharon on  
**01373 836734 or 07728 200402**

Clinic appointments at  
**12 Sunny Hill, Nunney, BA11 4ND**

Home visits also available



# John Hewitt remembered

John Hewitt of Lyes Green, Corsley, who died recently, was a founding father of The Bridge magazine. When he retired from printing The Bridge in 2004 he had been producing it for a remarkable 22 years. What is more, he didn't miss a month of printing it in all that time. The magazine was started by the Rev John Bloomfield as a community newsletter which would give church news but also include information about what was going on in the villages of Chapmanslade and Corsley month by month. It was to be free and delivered to every household in the parish. John produced the magazine from home using letterpress printing for the cover and typed stencils and duplicator for the text pages. The sheets were then sent out to collators and returned to John for assembly. Then (as now) a co-ordinator in each village would take them to the volunteers who delivered to each household. Local business advertisers

made the publication viable and in an effort to balance text with advertising, there was a waiting list for advertising space.

The advance of technology and the need to update with expensive equipment led John to decide that the printing operation would have to be handed over to the March Press in Frome and the end of an era arrived. There was a retirement party held for John and his wife Sue in March 2004 at Chapmanslade Village Hall when Dennis Barnard spoke of the Corsley and Chapmanslade's huge gratitude to John for his outstanding contribution to the community.

I was editor during John's last years as printer and would like to pay my own tribute to his quiet courtesy and efficiency and dedication to the role of printer. I enjoyed working with him very much.

Sue Waterman

Corsley Show 2015 presents

## An Evening with Vivien Lloyd

7.30pm, Thursday 7th May at the Royal Oak, Corsley

*"Vivien Lloyd is an inspirational tutor, author, preserver and baker who encourages novices and artisans to refine their skills, instilling passion for genuinely top quality products."*

Vivien, our distinguished judge in the jams and preserves classes, has kindly agreed to talk about just what is required for that 'perfect preserve' and to share her expertise and tips for creating clever curds and marvellous marmalade.

Come along to The Royal Oak and give yourself a competitive edge in this year's Corsley Show, or pick up some excellent tips on making preserves.

Vivien will also be signing copies of her latest book.

**Tickets £2 on the day** (all receipts will go to help the Corsley Show survive)



# Bob's bafflers

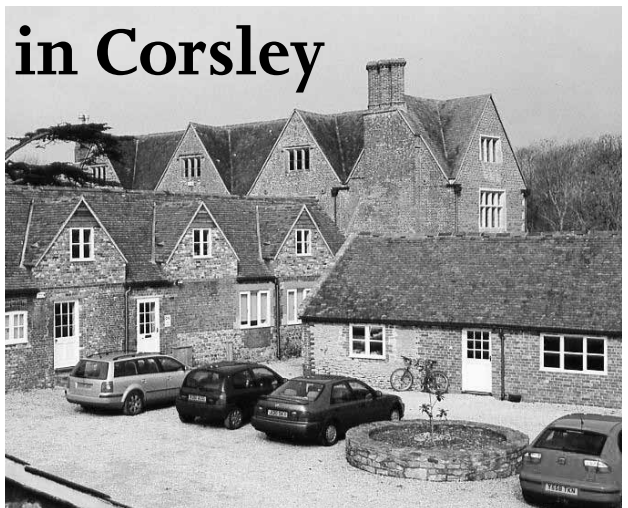
- 1 What is the chemical symbol for mercury?
- 2 Where is Nelson's flagship HMS Victory moored?
- 3 What was the title of Glen Miller's signature tune??
- 4 Who is the Roman Goddess of Peace?
- 5 Who was known as Lord Greystoke?
- 6 How many psalms are there in total in the book of Psalms?
- 7 Leap frog, the Gallant Hussar and Ampleforth are all types of what?
- 8 In which year did Britain join the Common Market?
- 9 The Statue of Liberty holds in the left hand a tablet bearing the date of the Declaration of Independence. What does she hold in her right hand?
- 10 Which planet has a great red spot?
- 11 What is the State Capital of South Australia?
- 12 According to the rhyme, where does the muffin man live?

Answers on page 44

## Offices to let in Corsley

**A range of office suites  
available singly or in  
combination**

Modern, high specification IT  
and telecoms infrastructure.  
Full heating. Historic country  
house setting. Ample parking.  
Excellent working environment.



**Call 01373 832120 for details**

# UPVC REPAIRS WILTSHIRE.CO.UK

FOR PROFESSIONAL WINDOW & DOOR REPAIRS

Are you having a problem with your UPVC windows or doors?

- ✓ Misted glass
- ✓ Broken or faulty window hinges
- ✓ Faulty locks
- ✓ Jammed windows or doors
- ✓ UPVC door adjustments
- ✓ Window and door handles

Call us – we are here to help

All work guaranteed

01373 430010 07795 143228 [www.upvcrepairswiltshire.co.uk](http://www.upvcrepairswiltshire.co.uk)

## the three horseshoes

The pub Chapmanslade deserves

Open daily from 10am-11pm serving delicious home cooked food (12-3pm & 6-10pm Mon - Sat. All day Sun.) Enjoy a refreshing drink in our beer garden with spectacular views of Longleat and Cley Hill or indulge with one of our regular meals deals by the warm, open fire on a bitter winter's day. We organise monthly events featuring live music, comedy and much more!

Call us on 01373 832 211

Follow us on Facebook for more details.



threehorseshoeschapmanslade



### Clare Merritt

*Quality upholstery and loose covers*

*Curtain make up*

*Roman blinds made to measure*

*Fabrics, curtain poles, etc*

01373 464993

Established 1973

### Piano Tuition

*All standards welcome*

**Debbie Rickhuss LLCM BEd**

Teacher Pianoforte and Theory

*reasonable rates ~ 01373 832829*



**Shake off those pounds and  
dance yourself fit.**

Chapmanslade Village Hall  
Monday 7.30pm - 8.30pm

Longbridge Deverill Village Hall  
Thursday 7pm - 8pm

For all levels of fitness and  
NO experience needed.

For more information please contact  
Amy 07830 119032

## Busy Bees Pre-School Chapmanslade



For children aged 2-5 years  
Monday, Wednesday, Thursday and Friday  
8am - 5pm; Tuesday 8am - 3.30pm

Please contact Kelly Williams to arrange a  
visit and a free trial session for your child  
Breakfast club and after-school club available.

Term time only

Telephone 07749 257608  
busybeespre-school@hotmail.co.uk

## FENCING



**Garden Fence Company**  
*Garden fencing supplied and erected*

- Repairs to existing fences
- Old fencing removed from site
- Hedges cut
- Small trees felled

For a friendly, cost effective and reliable  
service contact Gerald Gascoigne on:

07506 373335, 01373 832613  
info@wessexgardenfencing.co.uk  
www.wessexgardenfencing.co.uk

For your  
Heating Oil Supplies  
contact

## KINCH FUELS

at their  
local depot in  
Devizes, Wiltshire

Telephone 01380 727102

*The company you and  
your home will warm to*



## LUXURY PRIVATE CAR HIRE

A locally based, door-to-door, personal  
service for up to six passengers in  
air conditioned comfort

AIRPORTS • SEAPORTS • ANYWHERE

For bookings, please call  
01985 840088 07903 307734

## WEST COUNTRY SWEEP

Domestic & Commercial Chimney Services

**Andrew Leigh**

07545 822109  
westcountrysweep@gmail.com



# Notice of two forthcoming road closures

## Temporary Closure of Wood Lane (Part), Chapmanslade (Ref: TTRO 3720)

Notice is hereby given that Wiltshire Council has made an Order to close temporarily to all traffic Wood Lane (Part), Chapmanslade; for a distance of approximately 80 metres between properties No. 69 and No. 71. To enable Wessex Water to carry out separation works to their service pipe in the carriageway.

The closure will be clearly indicated by traffic signs and access will be maintained for residents.

This Order will come into operation **10 March 2015** and it is anticipated that the closure will be required for **three days**. The Order will have a maximum duration of 18 months.

## Temporary Closure of Lyes Green, Corsley (Ref: TTRO 3744)

Notice is hereby given that the Wiltshire Council intends to make an Order to close temporarily to all traffic in Lyes Green, Corsley, Warminster (from approximately Pool Farm to the Corsley Centre (as was)). To enable Wessex Water to undertake connection works.

Alternative Route via Deep Lane - A362 Corsley - Corsley Heath - Heathway - The Hollow and vice versa. The closure and diversion route will be clearly indicated by traffic signs.

The works will take place from **30th March to 1st April**. It is anticipated that the works will take the stated duration to complete depending upon weather conditions. The Order will have a maximum duration of 18 months. Access will be maintained for residents and businesses, although delays are likely due to the nature of the works.

For further information regarding these works please contact  
Simon Phillips (Wessex Water) on 0345 600 4 600 (24hours).  
Sustainable Transport Group, County Hall, Bythesea Road Trowbridge BA14 8JN.

---

## Chapmanslade's Loose Women

The March meeting will be a social on Thursday 5th March at Pearl Powell's Eden House, 89 High Street, Chapmanslade for gin and tonic or ? See you all at 7.30. **Pearl 01373 832264**

April's meeting will be at The Three Horseshoes (upstairs) on Thursday 3rd April. The speaker will be Steve Hobbs from Wiltshire and Swindon History Centre and will start at 7.30.

**Sue 01373 832428**



For Expert Tree Care

Telephone Jon Burgess on  
**01985 214320**

Skilled pruning  
Tree felling  
Stump removal  
Qualified and insured

**Free tree health  
survey and quotes**

*Keep active with physiotherapy*

**Alison Rossiter MCSP HPC**

***Chartered Physiotherapist***

30 years experience in physiotherapy specialising in the treatment of muscle and joint problems. Helping people to improve their health and fitness through treatment, exercise and advice.

Home visits can be arranged.

Daytime and evening appointments available.

*If you need help please contact:*

**Beckington Physiotherapy 01373 831483**

**Email: arossiterphysio@gmail.com**

**www.beckingtonphysio.co.uk**

**DAVID EDMUNDS & CO**  
**ACCOUNTANTS & TAX CONSULTANTS**

*Specialists in the self-employed, small and medium business and self assessment. Preparation of accounts, VAT, PAYE, income tax and corporation tax returns.*

*Personal, friendly service  
Evening appointments by arrangement*

Telephone 01225 334447

Home 01373 832430



**Specialist installers of Macadam  
Sports Surfaces with laser technology**

- Tennis courts
- Playgrounds
- Multi-use games areas
- Football, hockey & cricket pitches
- Synthetic grass

7 Whitworth Road  
Marston Trading Estate  
Frome, BA11 4BY

t. 0845 2416115  
m. 07767 401270

colinb@thornburysports.co.uk  
www.thornburysports.co.uk

**Kevin O'Mahony**  
**Quality Painter and Decorator**

Internal and external painting  
Artexing  
Wallpapering  
Coving  
Hand painted kitchen units

07724 349447 or 01985 301197  
email kevo7743@googlemail.com  
www.thewarminsterpainter.co.uk

# Barters' News

## Barters' new Plant Centre Manager

Deb Chard has been sharing the managerial role of the Plant Centre for two years and has now taken over fully as Plant Centre Manager. Deb trained in horticulture at Cannington in the 1980s and met her husband there. She has worked at Barters for a total of 18 years. Deb carefully looked after her Barters' t-shirt during a career break to concentrate on child care and surprised Barters' owners by wearing it on her first day back after six years away. She announced that she had always had every intention of returning to work at Barters! She now has three daughters and twin grand-daughters.

## New opening hours

Contrary to any rumours you may have heard, Barters is very much open for business, but we have slightly altered our opening hours. We will be closed on Sundays in January, February and from July to November, but we will have extra staff on Saturdays so we can give a better service.

## Nursery Open Days

Dates for future Open Days will be advertised in The Bridge. If there is an organisation in the village who would like to run the teas to raise funds on our Open Days, please contact [diana@barters.co.uk](mailto:diana@barters.co.uk).

## Cell trays for sale

We have a quantity of cell trays that are surplus to our requirements and these are available for sale through the Plant Centre. These are professional quality, very strong trays of very deep cells in a few different sizes ideal for starting off seeds or cuttings.

Legh Walker  
Barters Farm Nurseries Ltd

## Gardeners and growers

Don't miss out on setting your seeds this month. There is so much choice for you to provide both food and flowers for the family home and for exhibiting at the Corsley Show on Bank Holiday Monday 31st August.

In the vegetable plot, there's beetroot, cabbage, carrots cucumber, chard, leeks, lettuce, shallots, onions, parsnip, peppers, potatoes, tomatoes and squash. Not very good at gardening? Had some hideous disasters? Don't worry – enter your most grotesque vegetable – there's a class specially created for them!!

For your flower beds or cutting garden there are far too many options to list, so take a look at the Corsley Show Pre-Schedule and choose your favourites! Copies are available at Acres Supply and online at [www.corsleyandthebridge.co.uk](http://www.corsleyandthebridge.co.uk) and [www.chapmanslade.org.uk](http://www.chapmanslade.org.uk)

*Happy Growing!*

## Flash Fiction

Could you write a short story in 300 words or less? Look out for further details on the Corsley Show, Corsley and Chapmanslade village websites and in next month's edition of The Bridge. A good cash prize will be on offer for the top 3 entries!

# ALLSOP CARPETS & FLOORING

DOMESTIC ♦ COMMERCIAL ♦ INDUSTRIAL

Christchurch Street West, Frome BA11 1EB

TEL: 01373 463866 MOBILE: 07887 953014

[www.allsopcarpets.co.uk](http://www.allsopcarpets.co.uk)

## Chapmanslade Village Hall

Can be hired for all your functions:  
parties, weddings, meetings, classes, etc

For hiring information, phone

Ken Davies 01373 832034 or email  
[chapmansladehall@blueyonder.co.uk](mailto:chapmansladehall@blueyonder.co.uk)

## KEYVOLUTION

Locksmith and  
Carpentry Services  
serving the Wiltshire Area

Warminster based company offering locksmith and carpentry.  
Police cleared, reliable and honest service.  
Any other quote beaten.

- BS3621 lock upgrades for house insurance approval
- Garage doors, locks and running gear
- Lock repairs – specialising in Chubb mortice locks
- Upvc double-glazed door and window locks fitted – even old ones!
- Door or window locks opened destructively or non-destructively (indemnity required for these services)
- Digital code locks supplied and fitted
- All types of carpentry work – mostly 2nd fix and maintenance

Check out my website

[www.keyvolution.co.uk](http://www.keyvolution.co.uk)



or call Ben on 07748 214799 or 01985 219799

## White Horse Windows

Windows, Doors, Conservatories and  
more...

Local Company, Exceptional Standards  
10 year guarantee

Windows Fascia & Guttering  
Doors Conservatories

CERTASS Registered

For a Free Quotation call Ryan on  
07909 441442 or 01373 302594



## TOENAIL CUTTING

IN YOUR OWN HOME

ALICE LEWIS

01373 228010

## SINGING LESSONS

Charles Hetherington ARCM

*All ages welcome. Learn to sing,  
develop your solo voice, work for an  
exam, or sing the music you enjoy,  
with accompaniment.*

## PIANO AND CELLO LESSONS

Ann Hetherington

*Many years of experience  
with the young and beginners.*

Tel: 01373 832733

## SomerSet

SURFACING

Division of  
Thornbury Sports

*For Roads, Footpaths, Driveways, Car Parks*

- Macadam surfacing
- Block paving
- Resin bonded surfacing
- Coloured Macadams

7 Whitworth Road  
Marston Trading Estate  
Frome, BA11 4BY

t. 0845 2416115  
m. 07767 401270

[colinb@thornburysports.co.uk](mailto:colinb@thornburysports.co.uk)  
[www.thornburysports.co.uk](http://www.thornburysports.co.uk)



# BARTERS PLANT CENTRE

‘Passionate about Plants’

Shrubs ♦ Perennials ♦ Trees ♦ Roses ♦ Conifers  
Climbers ♦ Fruit Trees ♦ Hedging ♦ Soft Fruit ♦ Seeds  
Bulbs ♦ Basket Plants ♦ Bedding ♦ Vegetable Plants  
Christmas Trees ♦ Holly Wreaths  
National Garden Gift Tokens



## Opening Hours

Mon to Sat	9 - 5	(March to October)
Mon to Sat	9 - 4.30	(November to February)
Sun	10 - 4	(March to June + December)

Just off A36 in Chapmanslade, Wilts, BA13 4AL  
01373 832694 [www.barters.co.uk](http://www.barters.co.uk)



## JONATHAN CORP

Painter and Decorator  
General House Maintenance  
Sturford Mead Farm, Corsley  
Warminster, Wiltshire, BA12 7QU  
01373 832213

## Postlebury News

R Gould – Newsagent

All papers and magazines  
Home delivery service

01749 850556 07979 452677

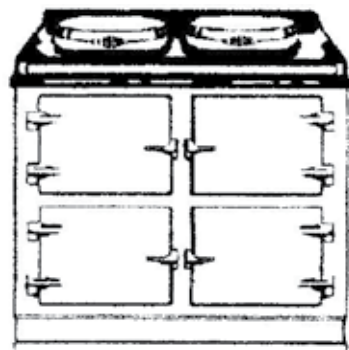


## T A P Services

Telephone/Fax 01373 463106

[www.tapservices.co.uk](http://www.tapservices.co.uk)

Authorised Stanley Service Agent



# Range Cooker Servicing

**Corsley Parish Council**

# Parish Council Briefing

The Chairman, Neil Britten, presents a round up of the activities of the Parish Council in February.

There was an occasional PC meeting on 17th February, principally to discuss a planning application, but also to discuss key street scene issues and affirm a major update to PC Standing Orders.

## Planning Applications

15/00199/FUL & 15/00285/LBC.

These both concerned the Old School and the long awaited details of its change of use to a residential unit, which had been approved in outline last year. Although two applications were presented, one for the full planning approval (FUL) and the second for Listed Building Consent (LBC), both were identical and were based on exactly the same set of documents, twenty in number including a comprehensive suite of thirteen drawings. (These documents can all be viewed on the Wiltshire planning website using the application reference numbers to search).

The major elements of the development are to create a second two storey wing from the existing ablutions block, re-model the existing rear entrance, demolish the two wooden classrooms and remove the tarmac, build a double garage in the northwest corner of the site and make minor

improvements to the existing office annex on the north side. There are also internal changes to the ground floor layout in way of the ablutions block and the office area, but the main hall is left unchanged except for the introduction of a mezzanine floor at its northern end. The entrance to the site will be between the two trees on the southwest corner of the site.

The Old School is a grade II listed building and the plans have been developed in consultation with the Wiltshire planners. No prior comments were received by the Parish Council and, other than the owners of the Old School and the Editor of the Bridge there were no members of the public present at the meeting. English Heritage has provided written comment to Wiltshire that they were content for the application to proceed under normal planning rules.

Regrading the LBC application, the Parish Council unconditionally supported the application. The view was that the development was a sympathetic enhancement of the building, improving all of those existing aspects which currently detract from its architectural status. It was particularly noteworthy that the eastern elevation, that facing St Margaret's Church,

[www.corsleyandthebridge.co.uk](http://www.corsleyandthebridge.co.uk)

is to be virtually unchanged, with the minor exception of some small changes to the visual part of the existing office roof.

As regards the FUL application, this was supported, with two conditional comments, the first about the poor visibility and safety of the entry/exit to the site and a second about inaccuracies in the representation of the western boundary. The drawings presented imply that there are three access points between the Parish leased lands and the Old School grounds, which is incorrect: there are none.

## Streetscene

Two key issues were discussed, both relating to locations where water has been draining on to local roads, leading to ice formation in the winter weather and the potential for vehicle accidents.

The first is on the A362, just on the Wiltshire side of the boundary where, after heavy rain, there is a stream of water flowing from the highway verge on to the road at the south side of the road. This has been a problem for many years and the source has never been properly identified. On two recent dates this year, cars have skidded off the road just below the outflow. Wiltshire have confirmed in writing that their gritting lorries do cover this length of road and have agreed to put some priority on re-examining the issue to try and identify the source of the problem.

The second location is at the sharp bend outside the entrance to High House Farm. A short ditch on the roadside has regularly filled (to the delight of the local duck population), overflowed, and run down the hill with the same risks as above. Wiltshire have given this their close attention, discharged their highway responsibilities in

terms of digging out the ditch and jetting the under-road drain. They are now watching the outcome. If it continues to be an issue, they will engage with the adjacent landowners, the Longleat Estate, to effect a more permanent drain solution.

## Annual Parish Meeting

Don't forget the Annual Parish meeting on 11th March, details on page 19 of this edition of The Bridge. Bob Montgomery and Michael Birnie are looking forward to explaining their plans to overhaul and improve all aspects of the Longleat experience and their interface with the adjacent villages.

## Dates of 2015 meetings

### Annual General Meeting

Monday 11th May  
(election of Chair and Vice Chair)

### Quarterly Meetings

Monday 1st June  
Monday 7th September  
Monday 7th December.

Occasional meetings, at short notice, will also be held to discuss planning applications and other urgent business. Please watch the village noticeboards and The Bridge website for these.

*Neil Britten*  
*Chairman, Corsley Parish Council*  
*neil.britten@btinternet.com*

For up-to-date information such as occasional parish council meetings, church services, previous editions of The Bridge, local clubs and activities, business listings, and other useful information, please visit  
**[www.corsleyandthebridge.co.uk](http://www.corsleyandthebridge.co.uk)**  
Want something added? Just email the Editor with your request!



# Clean-it

Recommended by



Carpet and upholstery cleaning specialist

**01373 462059 or 07779 247961**

Home ~ Private ~ Lettings



**TRAVELSTAR UK**

*Luxury chauffeured travel since 2002*

Mercedes 'S' Class and 'E' Class cars

all in immaculate silver with

air-conditioned / leather interiors

Classic Bentley wedding day cars

8-seater people carriers



**info@TravelstarUK.com**

**01373 430501**

**www.TravelstarUK.com** "A pedigree local service"

## Longleat Forestry

*Picket Post, Warminster*

*Wiltshire, BA12 7JS*

firewood logs

coal

kindling

woodchip

mulch

rustic poles

firelighters

christmas trees

**01985 213507**

Domestic Appliance Spares and Repair Service

## Domesticare

Mike, David and Sue Wye

21 Keyford, Frome

**01373 467351**

## Professional Childcare

Qualified, approved and registered.

A tailor-made, personal service.

Local and surrounding areas.

Call 07883 025476

[denise.m.rawlings@mypostoffice.co.uk](mailto:denise.m.rawlings@mypostoffice.co.uk)



**STONE &  
BRICKWORK  
SPECIALISTS**

Tel: 07970 513233

Email: [terry@rocketmasonry.co.uk](mailto:terry@rocketmasonry.co.uk)

[www.rocketmasonry.co.uk](http://www.rocketmasonry.co.uk)

**JERRY RAYNER** ●  
boiler maintenance ●

**01985 841461 or 07775 755981**

FOR SERVICING AND BREAKDOWN

OF OIL BOILERS

also AGA and RAYBURN

- Competitive rates
- Friendly, helpful and efficient
- Call now for a quote

Corsley Parish Council

# **Annual Parish Meeting**

**Wednesday 11th March at 6.30pm**  
**Corsley Reading Rooms**

**Bob Montgomery**

Chief Executive Officer

**and**

**Michael Birnie**

Land Agent

**of**

**Longleat Estate**

will give joint presentations and engage in discussion on their plans for Longleat and its relationship with the adjoining Villages.

They will explain their recognition of the interests and concerns of the surrounding villages and businesses, their determination to bring new values and attitudes to bear on the management of Longleat and the interfaces with the local population, through the progress and successes of the last 12 months.

**Followed by**

**The Chairman's Annual Report**  
**and any questions**

# H A S L

## Hyde Accounting Services Ltd Accountant & Bookkeeper

**Self Assessment tax  
Bookkeeping, VAT, Payroll  
Construction Industry Scheme**



New Business  
Start-ups and  
Limited Company  
Formation

**Vanessa M A Hyde MAAT**  
Locally based in Corsley Heath

t. 01373 832700  
m. 07740 468 003  
e. [vanessa@hydeaccounting.co.uk](mailto:vanessa@hydeaccounting.co.uk)  
w. [www.hydeaccounting.co.uk](http://www.hydeaccounting.co.uk)

## Cross Keys

Lyes Green, Corsley

*Home-cooked food  
12 - 2.30pm and 6 - 9pm  
Open all day on Sundays  
food served 12 - 8pm*

*Function room and large beer garden*



**01373 832406**

[www.facebook.com/CrossKeysInnCorsley](http://www.facebook.com/CrossKeysInnCorsley)

## Corsley Tennis Club



New members welcome –  
all ages, all abilities  
Three hard courts available all year  
Weekly junior coaching available

Low subscriptions

Contact either

Jenny Bishop 01373 832834 or  
Rebecca Bennett 07974 796468



## Little Cuckoo's Pre-School

Lyes Green, Corsley  
(next to the Corsley Centre)

For children aged 2-5 years

Monday, Wednesday, Thursday and  
Friday - 9am - 3pm

Now accepting 2 year-old funding in  
accordance with Wiltshire Council guidelines

Mother and Baby Group  
Tuesday mornings from 10am to 11.30am

Contact Hayley McMahon 01373 832298  
[www.littlecuckoos@hotmail.co.uk](mailto:www.littlecuckoos@hotmail.co.uk)

CHRIS SEVIOUR  
Building Services



07894 708949

[cmseviour@gmail.com](mailto:cmseviour@gmail.com)

Roofing, Loft conversions,  
Extensions, Plastering,  
Natural stonework



## S B Services



Contact Sean  
07828 671566

*For your garden maintenance  
and home improvements*

# Three Open Doors

Dear Friends,

I would like to say that spring was finally here, but as I write it is still very cold and wet outside. Never mind! The snowdrops are glorious, the later bulbs are growing taller everyday and the daffodils in the garden are in bud ready to burst forth in all their glory any day now. The light is returning and hens will be coming into lay again after being on strike during the dark months of winter. We've nearly got our hen run finished so we will be back into egg production shortly I hope, when we have found some willing pullets to add to our family. I do miss my hens; it was one of the hardest things we had to do in giving our 'girls' away when we moved here. I do know someone who takes their hens on holiday with them so as not to leave them behind, but perhaps that is going a bit too far.

I do think the seasons are a wonderful gift to us, a cyclical story of birth, growth and flowering, dying and regeneration, told with beauty and pathos through the ever changing vista of the natural world. Nothing in the created order ever stands still. Even in the depths of winter when day after grey day saps our energy, there is change and movement; an almost imperceptible shift in the quality of light, fragile sunshine on a bare field revealing tiny green shoots, the ever changing colours of earth and sky. And of course at this time of year we await with baited breath for the world around us to explode with life and colour in the riotous dance of spring.

Colour can be so enthralling can't it? Recently, at a day conference I escaped during the lunch hour and made my way to a tiny shop dedicated solely to knitting. Oh the colours inside that shop! Blues and greys and beautiful woody browns, deep red and burnt orange, leafy greens and richly decadent purple, wool with flecks in it, wool shimmering with hues of many different colours, exquisitely delicate wool, soft to the touch, skeins of chunky, earthy wool that whispered of moor and mountain – I could go on.

Such a variety of beautiful wool ready to be woven into something wonderful, ready to be knitted stitch by stitch into a much loved jumper or comfy cardigan. It set me thinking about the colours in our lives; sometimes glowing with hope, sometimes more muted; the greys and browns of winter woven in with red and gold, sometimes flecked with sorrow, sometimes shot through with joy.

We so fear change don't we, but maybe we would be better to embrace it; like the cycle of the seasons the colours in our lives will ebb and flow, ever changing, for that is the nature of all life. As the writer of Ecclesiastes so movingly wrote: 'For everything there is a season, and a time for every matter under heaven.' To change and grow, to change and die, to be caught up in the extraordinary cycle of life, this is it what it means to be human. Whatever season we find ourselves in God goes with us, and his loving faithfulness woven throughout the created order, will sustain us, hold us, and finally welcome us home when our time comes.

Love and prayers

Pauline

# **March Church Diary**

## **Sunday 1st March: Second Sunday of Lent**

9.30am at St Margaret's, Corsley: Eucharist

11.15am at St Peter & St Paul, Longbridge Deverill: Morning Worship



## **Tuesday 3rd March**

10.30am at 131 High Street, Chapmanslade and at 7.30pm at the Rectory,  
Longbridge Deverill: Discovering Lent through pictures.

## **Sunday 8th March: Third Sunday of Lent**

9.30am at St Philip & St James', Chapmanslade: Family Eucharist

10.30am at St Mary the Virgin, Kingston Deverill: Eucharist

11am at St Mary's, Temple: Matins



## **Tuesday 10th March**

10.30am at 5 Brimhill Rise, Chapmanslade and at 7.30pm at the Rectory,  
Longbridge Deverill: Discovering Lent through pictures.



## **Sunday 15th March: Mothering Sunday**

9am at St Mary's, Temple: 1662 BCP Holy Communion

9.30am at Chapmanslade School: Family Eucharist

10.30am at St Michael the Archangel, Brixton Deverill: Eucharist



## **Tuesday 17th March**

10.30am at 131 High Street, Chapmanslade and at 7.30pm at the Rectory,  
Longbridge Deverill: Discovering Lent through pictures.



## **Wednesday 18th March**

7.30pm at St Margaret's, Corsley: Parochial Church Council



## **Thursday 19th March**

10am to 12pm at the Three Horseshoes, Chapmanslade  
Church and Community Coffee Morning



## **Sunday 22nd March: Fifth Sunday of Lent**

9.30am at St Margaret's, Corsley: Eucharist

10.30am at St John the Baptist, Horningsham: Eucharist



## **Tuesday 24th March**

10.30am at 5 Brimhill Rise, Chapmanslade and at 7.30pm at the Rectory,  
Longbridge Deverill: Discovering Lent through pictures.



## **Wednesday 25th March**

12.30pm to 1.30pm at the Reading Rooms, Corsley: Light Bites Soup & Bread  
Lunch. Donations in aid of Warminster Foodbank.



## **Sunday 29th March: Palm Sunday**

10.30am at St Margaret's, Corsley: Procession with donkey from Pool Farm  
followed by Benefice Eucharist



## **Thursday 2nd April: Maundy Thursday**

7pm at St Philip & St James, Chapmanslade: Agape meal

7pm at St Peter & St Paul, Longbridge Deverill: Agape meal



## **Sunday 3rd April: Good Friday**

10am at Chapmanslade School: Messy Church Easter workshop

11am at St Michael the Archangel, Brixton Deverill: Stainer's Crucifixion and  
Service

12.30pm at St Philip & St James', Chapmanslade: short Good Friday Service



## **Sunday 5th April: Easter Sunday**

9.30am at St Mary's, Temple, Corsley: 1662 BCP Holy Communion

9.30am at St Margaret's, Corsley: Eucharist

10.30am at St Peter and St Paul, Longbridge Deverill: Eucharist

10.30am at St John the Baptist, Horningsham: Eucharist

## Fundraising

We are delighted to report that our Auction Evening raised the magnificent total of £4,600 for church funds. This money will enable us to continue to upgrade our facilities for the benefit of the community. The auction was a huge success and thoroughly enjoyed by all those who came along and supported us. We are indebted to Dennis Barnard who was the auction organiser and ran the evening, and of course our catering team for all their hard work in providing such a wonderful meal for a hundred people, and to everyone who so generously donated gifts or promises.

We can now confirm that the May Fayre will be on Saturday 16th May at Manor Farm, Corsley by kind permission of Chris and Claire da Costa. Watch out for further details.

We are about to embark on a major fundraising campaign to enable us to proceed with some major refurbishment of the bells at St Margaret's. We have six bells in the tower and they were last serviced in the 1960's and we do need to proceed with this work as soon as funds allow. We have been advised that the cost of the work will be in the order of £12,000 so we have a major challenge but we will succeed!

## Annual Parochial Church Meeting

The Annual Parochial Church Meeting will be held on Wednesday 15th April at Chapmanslade School starting at 7.30pm. The Parochial Church Council will be reporting that 2014 was a very busy and successful year. We welcomed our new Vicar and continued to fundraise to ensure that we could progress with our church and community activities. Everyone is very welcome to come to this meeting and discuss the life of our church. For those who might wish to be more involved you might consider joining the PCC or even becoming a Churchwarden.

## Warminster Foodbank

During Lent we are supporting the Warminster Foodbank. The donations from our February and March Soup Lunches will be donated to Warminster Foodbank. We are also collecting foodstuffs for the Foodbank and there are collecting boxes in all three churches. We then transport these food donations to the Foodbank on a regular basis.

Copy for 3 Open Doors should be sent to Keith Muston at [themustons@btinternet.com](mailto:themustons@btinternet.com) subject 3ODs or phone 01373 832755.

If you would like to receive weekly news of Church events and activities, please send your email address to the above, with subject 'Through the Open Doors' or download a pdf from the 'churches' pages at [www.corsleyandthebridge.co.uk](http://www.corsleyandthebridge.co.uk)



*Individually tailored holidays  
for the very best in African travel*

J&C Voyageurs organises individually tailored African holidays for those looking for something special, memorable and away from the crowds. We will incorporate your distinct wishes and aspirations, with no detail overlooked, so that you are able to relax completely.

We have a passion for Africa and conservation of its wildlife, peoples and incomparable scenery. With over 20 years' experience exploring Africa and putting outstanding African holidays together, we can discuss hundreds of safari lodges, camps, beaches and city hotels with first-hand knowledge.

Telephone 01373 832111

Email [mail@jandcvoyageurs.com](mailto:mail@jandcvoyageurs.com)

[www.jandcvoyageurs.com](http://www.jandcvoyageurs.com)



## HolidaysNearLongleat.co.uk

A Dedicated website for;

Self Catering, Bed & Breakfast

Guest House, Camping & Caravanning

Accommodation all close to the Longleat Estate

## npv plumbing & heating

Installation • Servicing • Repairs

Bathroom and tiling specialists

All plumbing and heating work undertaken

Our fully qualified plumbers offer all general plumbing services from boilers to bathrooms. We will gladly advise clients on the most suitable products for their property – be it heating systems, boilers, radiators, bathrooms or showers.

07738 940355

[www.plumbersfrome.co.uk](http://www.plumbersfrome.co.uk)

## Hypnotherapy

If you need help with:

Anxiety

Depression

Phobias (such as flying or spiders)

Panic attacks

Relaxation

Weight management

Smoking cessation

Natural childbirth

Confidence

Public speaking

Exam nerves

and much, much more...

Call ANJI HOLLAND on  
07944 647 978 / 01373 832 898  
to enquire or just for a chat

[www.hollandhypnotherapy.com](http://www.hollandhypnotherapy.com)

With practices in Chapmanslade and Bath

I am a member of the National Council for Hypnotherapists  
and am bound by their code of practice and ethics

# Corsley WI March News



Swimming in open sea in March, without a wetsuit, with the air temperature about seven degrees and the sea at its coldest? Who would be hardy enough to try? Well, a group of youngsters from Frome did exactly that in 2013, as their first stage of training to swim from England to France, to raise funds for Dorothy House and PAC!

Corsley WI were very pleased to welcome our speaker, Sally Hooper, who was one of the parents involved and she told us that young teenagers from Frome Swimming Club were asked if they would like to take on the challenge of a channel swim. After passing medicals, concentrated training began and with the aid of a coach, they built up their stamina week-by-week, swimming for longer and further out in the open sea, even in the dark with lights! Each person had to be able to swim for two hours in very cold water. Ailsa Williams, Nicole Poole, Lucy White and Tatiana Hooper eventually qualified but as a minimum of 5 were needed, Sally, her husband Geoff and Lucy's dad Marcus joined the group and after training, they too qualified. At 6am in Dover on 4th September 2013 the marathon relay started and after 13 hours and 9 minutes swimming through some of the world's busiest shipping lanes, they completed the

crossing, a wonderful achievement raising almost £10,000 for charity. Di Dowling gave the vote of thanks.

The Wiltshire Federation have been busy arranging visits to the Royal Hospital at Chelsea and the WI Centennial Fair in Harrogate, a Denman weekend, an evening with Virginia Ironside, a Japanese International Day and many other workshops. Full details are available at our meetings.

The 2015 Corsley WI outing will be to Beaulieu on Thursday 18th June and this trip is open to everyone. Please contact Carol on 01373 832446 if you would like to come.

Amanda Bain won the annual competition for the Hilda Guy Arts and Crafts Cup, for her creative box resembling a beach hut. The monthly competition for members for a seaside postcard was won by Caroline Higham, with Hilary Vallis second and Carol Seward third.

We are having a Cream Tea and a talk from our WI Advisor, Jenny Coates, at our Annual Meeting on Thursday 12th March at 2.30pm in the Reading Room at Corsley and hope all members will join us. We would also be very pleased if any new members would like to come.

## **Everyone is very welcome to join us for the following activities:**

Bridge Club	First and third Tuesdays each month, 2-4pm, Corsley Reading Room
Coffee Morning	First Tuesday each month, 10-12noon, Corsley Reading Room
Gardening Club	Third Wednesday each month, 2.30pm, venues to be announced
Lunch Club	Last Tuesday of the month, 12.30pm, various venues

*More details on the Gardening Club and Bridge Club from Pauline on 01985 215760*



# The buzz from the Bee Hive



Welcome to the first news feature from the 'Bee Hive' – Busy Bees Pre-School, Chapmanslade

In case there's some confusion this isn't an article from Robin Chapman about beekeeping but the first of our regular news items from the Busy Bees Pre-School in Chapmanslade (located in a Portacabin in the school grounds).

Busy Bees is a charity and is run by a voluntary committee. We provide nursery places for children aged 2 – 5 as well as a breakfast and after-school club for those that attend Chapmanslade school.

On our return from half-term we will be looking at Spring and New Life with the children. This will include activities such as planting bulbs and watching our chicks hatch. Our incubator will be arriving on 2nd March and we hope all our eggs will make it! The children are also looking forward to 'Pyjama Drama' who will be visiting the pre-school on the 9th and helping the children with role play linked to dinosaurs.

Thank you to the parents who have given us old saucepans, wooden spoons etc., to help with our 'sound board' activity. These are now hanging in our garden so if you hear a metal melody as you

walk along the High Street you will know where the noise is coming from!

The children will start their Easter activities on the 23rd March and our Easter egg hunt will take place on the 28th.

The children play outside every day using both our little garden area and the school playing field and playground. We are conscious that the garden area needs a makeover and are very grateful to Aster Communities for their grant of £2,000 to help with the costs. A parent who specialises in landscape gardening is helping us decide on the best layout for our new garden, work on which we hope will be started shortly.

We have some places available in September as our older children leave for primary school. If you would like further information, please contact Kelly Williams on 07749 257608 or email [busybeespre-school@hotmail.co.uk](mailto:busybeespre-school@hotmail.co.uk)

Sally Evans  
Chair Busy Bees Pre-School  
01373 832906

## Quiz Night

**7.30pm, Thursday 2nd April  
at The Royal Oak, Corsley**

**(hosted by Bob 'The Baffler' Maynard)**

£8 per person which includes hot buffet meal at half-time, £1 into the winning pot and £2 towards the Corsley Show.

Book your table now as there are limited spaces available and not many tables left! Maximum six people per team.

# Chapmanslade Motor Services

**Vehicle repair  
and servicing**

**Brake  
specialist**

**MOT preparation  
and repairs**



**Batteries  
Exhausts  
Tyres**



*Quality service at competitive rates*

**FREE** ~ wheel balancing and tracking with new tyres

**FREE** ~ courtesy car

Electronic diagnostics available – most makes covered

Green Farm Industrial Estate, Chapmanslade

01373 832188 or 07711 256927

**Busy  
Bees**



**01373 455911**

**SPECIALISTS IN CLEANING & GARDEN MAINTENANCE**

**Our services include:**

**Domestic Cleaning  
Commercial Cleaning  
Carpet/Upholstery Cleaning  
One-off spring cleans  
Trauma Cleaning  
Builders' Clean  
Garden Maintenance  
House and Garden Clearance**

**Amy: 07971 921651 or Caron: 07971 921617**

**E-mail: [info@busybees2000.co.uk](mailto:info@busybees2000.co.uk)**

**[www.busybees2000.co.uk](http://www.busybees2000.co.uk)**

**JOHN E S JONES**

**GENERAL  
BUILDER**



Carpentry, painting and  
decorating, extensions, uPVC,  
facias and gutters, fencing,  
decking and patios

**Also general repairs**

Telephone 01373 832600

Mobile 07074 832600

**Now that you and your garden are warming up...**

# **Love the plot you've got!**

**It's time to get back into the garden and get ready for the year ahead.**

Now the ground is starting to warm up, all those small bulbs you planted during the autumn, the buds all over your magnolia and the new shoots on your favourite plants are pushing their heads up through the soil giving us some spring colour. To help them along and to get the best out of them, clear back the borders, clear away leaf debris and all the die-back from your herbaceous and deciduous plants.

If you're looking to grow your own this year, you're in time to consider sowing onion sets, shallots, carrots, turnips, parsnips and radishes.



Having already dug your vegetable patch over and added organic matter it's time to plan which seeds you are going to grow, how many to grow and where in the patch to grow them. Don't forget if you're using the same piece of ground as last year try not to put everything in the same place as it can encourage problems with this year's crop.

With most of the above seeds they are best grown in rows, the roots crops; such as turnip, carrot and parsnip need to be planted in a 1" deep drill in the soil and well watered in: remember to thin them out as they develop.

Onion sets and shallots can be planted out into the soil allowing room for them to grow. Plant them so their tips poke out of the ground a little. Water in and remember to keep the soil around the onion set loose and free from weeds.

A little tip for those spare onion sets is to plant them up in to some pots, put them somewhere with plenty of light and a bit of warmth like a greenhouse or a cold-frame. Make sure you remember to water them, and give them a little feed if necessary, you never know you might grow a prize winning giant to enter into the Corsley Show!

*Rob White  
Acres Supply Garden Centre, Corsley*



# TEA & sympathy

Considerate catering at a difficult time

*Catering specifically for funerals.*

*All our food is homemade, therefore, should you have a special request, perhaps a favourite cake ~ just ask and we will do our best.*



Telephone Kim Clark on 01373 832151 or 07843 056916

e-mail [kim@teaandsympathy.uk.com](mailto:kim@teaandsympathy.uk.com)

[www.teaandsympathy.uk.com](http://www.teaandsympathy.uk.com)

## CHANTRY CONSTRUCTION

stone walling • patios

drives • extensions

*prompt reliable service*

*mini digger and driver for hire*

**01373 836787      07855 343388**

COMPUTER & LAPTOP REPAIRS  
UPGRADES / SYSTEMS & LAPTOPS

VIRUS REMOVAL / BROADBAND  
WIRELESS / NETWORKING



FAST, FRIENDLY, PROFESSIONAL SERVICE  
COMPETITIVE RATES  
ONSITE OR WORKSHOP

CompTIA  
A+ Certified

call  
**01373 302901**

[www.ntscomputing.co.uk](http://www.ntscomputing.co.uk)  
[help@ntscomputing.co.uk](mailto:help@ntscomputing.co.uk)

### LAPTOP REPAIRS

We also replace  
laptop screens,  
keyboards,  
CD-DVD drives,  
fix overheating  
and more

## Forget-me-not

• GARDENING SERVICE •



Weeding, pruning, planting,  
fence painting, etc

01373 464416

07890 850465

## Do you need a plumber? Call...



## Paul Antell Plumbing

07890 366832

01373 467427

Professional, reliable, friendly and local  
[paulantellplumbing@talktalk.net](mailto:paulantellplumbing@talktalk.net)  
[www.paulantellplumbing.co.uk](http://www.paulantellplumbing.co.uk)



# Weatherproof Windows Co.

- Renovation
- Replacement
- Draught-proofing
- Small repairs
- Replacement cords, pulleys handles, weights, glazing

All types of sash and wooden windows  
suitable for Listed Buildings

Ian Gallagher

Fleecemill Cottage, 1 The Steps,  
Buckland Dinham, BA11 2QR

Tel: 01373 474637 Mobile: 07929 938419

[www.weatherproofwindows.co.uk](http://www.weatherproofwindows.co.uk)

# EVERGREEN GARDEN SERVICES

Garden maintenance and landscaping,  
lawns, strimming, hedging, pruning  
long and short term maintenance,  
patios fencing, turf and seeding.

Over 20 years experience in  
horticulture, landscaping and estate  
management.

**Contact Ben Hale**

**01373 825495**

**07879 492283**



## Rose Knight

House sitting and  
dog and cat minding  
service

**01373 464904**

**07773 435254**

**knight\_rosemary@sky.com**



St Davids, Whitsand Bay, Cornwall

[www.stdavidswhitsand.co.uk](http://www.stdavidswhitsand.co.uk)

**01373 464870**

St David's Lodge is a self-catering chalet offering  
uninterrupted sea views. The sandy, lifeguarded beach  
is about a 10 minute walk down the nearby coastal path.  
The Chalet sleeps up to 8 and has private parking for 2  
cars. Please visit our website for more details.



# ROGER PATCH GENERAL BUILDERS

**Also offering purpose-made joinery**

We now have a HETAS registered fitter enabling us to fit  
Woodburners, Multifuel Stoves and Chimney Liners.

Cedar Cottage, Wolverton, Zeals, Wiltshire, BA12 6LW

**Telephone 01747 840449 Mobile 07971 686973**

**Email [rogeratwolverton@yahoo.co.uk](mailto:rogeratwolverton@yahoo.co.uk)**

## **Chapmanslade Parish Council**

# **Parish Council Briefing**

Phil Jefferson reports from Chapmanslade Parish Council

Our meeting on 12th February had a lighter agenda than in recent months, perhaps indicating a temporary lull in what is proving to be a very busy year!

### **Southcroft resurfacing**

Wiltshire Council took us all by surprise with a sudden announcement that Southcroft was to be resurfaced after all. The work, on 3rd February, only took a day to complete, apart from white lining and manhole cover adjustments, and was the cause of considerable interest in the village. The operation was carried out with military precision and minimum disruption, with an impressive number of heavy vehicles and specialist plant being deployed. Several Southcroft residents attended our meeting and expressed their satisfaction with the result. So, many thanks to Wiltshire Council for delivering this result. Wood Lane residents – perhaps it will be your turn in a few years' time!

### **Defibrillator**

Good news! Our defibrillator was installed at the beginning of February. It is in a prominent position on the front wall of The Three Horseshoes. Our thanks to Toby and Ben for making this possible and to The

Friends of Frome Hospital for providing it.

We hope it will never need to be used. If, however, someone living locally does have a heart attack and a 999 call is made to the ambulance service, the operator will give details of the defibrillator's location and how it can be accessed. The machine itself gives instructions on how to use it. Those vital minutes before the first responder arrives to take charge are what saves lives. We have a small team of 'guardians', led by John Lewis, who will look after the machine and check it regularly to make sure all is in good order. We are planning an event to show residents how the machine works and to raise funds towards its upkeep. All offers of help and donations will be warmly welcomed.

### **Planning**

At the time of writing, we are still waiting to learn whether Wiltshire Council has agreed to give planning permission to the owners of Thoulstone Park for temporary permission (ref 14/10453/FUL) to store eight touring caravans and residential occupation of a further five caravans to be housed in the area of the former golf driving range. We objected to the proposal as have a significant number of local residents.

[www.chapmanslade.org.uk](http://www.chapmanslade.org.uk)

We are also waiting to hear when Wiltshire's Western Area Planning Committee will reach a decision on the static caravan, which arrived at Sienna's Valley in Huntenhull Lane last summer (ref 14/09500/FUL). The owner of the site contends that it is essential for someone to be on site for 24 hours each day to care for a herd of alpacas but this is disputed by the parish council and local residents. Planning permission to extend the barn at Sienna's Valley was refused by Wiltshire Council last year and this is currently the subject of a planning appeal.

### **Thoulstone Wind Turbine**

(Ref 14/08778/FUL) We understand that a decision on this controversial application can be expected by the end of April. The developers have been given an extension until the end of February to respond to some of the concerns raised in the period of consultation and we understand that objectors will be given the opportunity to see their response, and to comment on it in early March, before a final decision is taken.

### **Mains Gas**

53 households have now expressed an interest in being connected to mains gas so we are rapidly approaching the number needed before Wales and West can proceed.

### **Neighbourhood Watch**

Unusually, a small number of burglaries have recently been reported in the village, involving premises and a vehicle. So please be vigilant and report anything suspicious to the police and to Jill Willmot, our Neighbourhood Watch co-ordinator (832464 and [Jillwillmot@hotmail.com](mailto:Jillwillmot@hotmail.com)). Our neighbourhood police team (NPT) often tell us that all incidents, however small, should be reported to them so please don't

hesitate to do so if you have any concerns. The NPT is usually present at our monthly coffee mornings (10am until noon on the third Thursday of each month at The Three Horseshoes).

Our next meeting is on 12th March, 7.30pm at the school. Our agenda will include a presentation by the agents acting for the owners of Thoulstone Park, who will be reporting on their future plans. We will also be considering one new planning application, concerning a proposal to build an extension to number 20 Southcroft (ref 15/01186/LBC). At our April meeting, on the 9th, which will be our Annual Meeting, representatives of Lochailort Investments will be providing a progress report on their plans for the Barthers Farm development. We will also be reporting on the council's activities over the previous 12 months. Our Annual General Meeting, at which the council's officers are elected, will take place on 14th May.

It has been heartening to see that so many of our recent meetings have been well attended. Everyone is welcome to come along to all of them. Do come to listen or to speak and help us shape the future of our parish.

*Phil Jefferson*  
01373 832845  
[phil.jefferson@virgin.net](mailto:phil.jefferson@virgin.net)

### **Silver Surfer IT Sessions**

Details of the various IT Sessions being run at the Corsley Reading Rooms for 'Silver Surfers', the dates and booking arrangements can be found on [hdwebsites.wix.com/crr-it](http://hdwebsites.wix.com/crr-it) or those interested can phone 01373 832897

There are also sessions on Digital Photography.

**Biology: changing the world**

# Antibiotics

Will they be useful in the future?



Readers will be familiar with going to their GP and expecting a prescription for medicine – quite often an antibiotic. Farmers will be used to vets prescribing antibiotics for their livestock. Since the 1940s antibiotics have been ‘magic bullets’ to treat a whole variety of diseases. Before the commercial production of penicillin during the Second World War, people and animals could die of infections that are now easily cured with antibiotics.

However, there may be a return to the days when some of these diseases are untreatable. Many bacteria which cause infections are becoming resistant to one or more antibiotics. For example, MRSA (methicillin-resistant *Staphylococcus aureus*), which causes sepsis, is resistant to most antibiotics. Some estimates suggest that by 2050 there will be an extra 10 million deaths due to drug-resistant infections unless we can find new antibiotics.

Why are diseases becoming antibiotic-resistant? Antibiotics are very widely used and can select for resistant bacteria to survive, whereas sensitive bacteria will not. The resistance can transfer to other bacteria. Failing to complete a prescribed course of antibiotics because you feel better can lead to the development of resistance in those few remaining disease-causing bacteria in your body. The use of antibiotics in agriculture

has also led to an increase in resistant organisms in the farm environment. UK agriculture used 409 tonnes of antibiotics in 2012. These are often used to treat a whole herd or flock when only a few animals are sick, which is equivalent in human terms to treating a whole street because little Johnny at number 14 has an infection.

Few pharmaceutical companies are looking for antibiotics, as the discovery and development of a new antibiotic is expensive (about £50M), so we are largely reliant on the ones we already have. However, there are some moves to find and develop new antibiotics. These are often found in soil microorganisms, such as fungi and bacteria, and universities are beginning to work with local schoolchildren to identify new antibiotic-producing organisms. This provides hope for the future.

What can we do to ensure that antibiotics are useful in the future?

- Do not expect your GP to automatically prescribe antibiotics if you have a minor ailment. Coughs and colds are usually caused by viruses, which cannot be treated with antibiotics; many other illnesses can be recovered from without any treatment.
- **Always** complete the course of antibiotics you have been prescribed.
- On holiday in countries where you

can buy them over the counter, do not self-prescribe antibiotics, as you may encourage new resistances in infectious organisms.

- Do not give your prescribed antibiotics to others.

*Nigel Brown*

This is the first in a series of articles about science and everyday life. During 2015 the series is sponsored by the Society of Biology and will focus on the life sciences – health, agriculture and biotechnology. The author, Nigel Brown, is a retired Professor of Microbiology, now living in Chapmanslade. If there is a biological topic that you would like him to write about, please contact him at [nigelbrown48@gmail.com](mailto:nigelbrown48@gmail.com).

## **The mobile library service visits next on:**

### **Thursday 5th March**

10:10 - 10:30

Corsley, by the Royal Oak pub

10:45 - 11:00

Chapmanslade, outside 132 High St

11:05 - 12:00

Chapmanslade, by the school

Future dates for this round are:

**Thursday 19th March,  
Thursday 2nd April,  
Thursday 16th April and  
Thursday 30th April**

## *An evening of traditional Irish music and dancing featuring SHEBEEN*



*Friday 20th March  
Corsley Reading Room*

*7.00pm — 11.00pm*

*Traditional Irish Supper (+ vegetarian option) and Bar*

*Tickets £12.50*

*Tickets available from Rosemary Collins (01373 832789)  
and Committee Members*



## Steve Dayman-Johns

### Driving Instructor

Condensed Courses and  
Gift Vouchers available

Tel 01373 865422 - Mob 07730 445648

email [stevekdj@gmail.com](mailto:stevekdj@gmail.com)



## zia pizza

pizzeria restaurant • italian take away

ANDREA & VIC INVITE YOU  
TO SAMPLE AN AUTHENTIC ITALIAN  
DINING EXPERIENCE. FROM PASTA  
TO TRADITIONAL STONE BAKED  
PIZZA, AVAILABLE IN THE  
RESTAURANT & TO TAKE AWAY -  
DELIVERY SERVICE AVAILABLE

[www.ziapizza.co.uk](http://www.ziapizza.co.uk)

**t: 01373 865271**

15 palomino place • westbury  
wiltshire • BA13 3SD

## Dashing Dusters

- Cleaning and ironing to a high standard
- General domestic assistance
- Commercial cleaning
- Reliable
- Reasonable rates
- References available

01373 832484 (evenings)

## M W Garden Services

20+ years experience

A tailor made service for all  
types of garden maintenance

Insured and CBI's checked

[mark22.weaver@mypostoffice.co.uk](mailto:mark22.weaver@mypostoffice.co.uk)

Telephone 01373 832854

Mobile 07921 818452

## Black Dog Farm

### Bed & Breakfast

You will find a friendly welcome and a hearty  
breakfast in our listed Georgian Farmhouse.  
The quality en-suite bedrooms contain everything  
you need to ensure a comfortable stay.

Lyn and Fraser Mills ~ 01373 832858 or 07878 954563  
Black Dog Farm, Chapmanslade, Westbury, Wilts, BA13 4AE  
[www.blackdogfarm.co.uk](http://www.blackdogfarm.co.uk)



## Hardwood logs for sale

(cut to size if required)

**FREE DELIVERY**

## R M Log Supplies

Beckington

Call Robin on

**07876 621929**

Offices to let - Corsley

Historic country  
house setting.  
Excellent working  
environment.

Call 01373 832120



# Whitbourne Chapel

*Know that the Lord is God! It is He that made us, and we are His*

## A desert experience

"Mum! Why have I got three ridiculously long toes?" asked baby Camel. "To keep you on top of the desert sand."

"Mum! Why have I got these super-long eyelashes?" "To protect your eyes from the desert sand."

"Mum! Why have I got these huge lumps on my back?" "They store water, so you can go for weeks over the desert sand without drinking."

"Mum! Why am I in a zoo, then?"

In contrast, humans often ask "What am I doing in a desert?" Bereavement, divorce, disgrace, tragedy, disaster – any number of things can propel us into a mental and spiritual wasteland. Numbness, pointlessness and emptiness are not the purposes for which we were made. We know that in our innermost beings.

The season of Lent is meant to provide us with a desert experience lasting forty days. It seeks to mirror Christ's sojourn in the desert immediately prior to his public ministry. It has become customary to go without something we would miss for that period, whether it be chocolate, alcohol or TV. Lent is about a preparation for Good Friday. The desert has certain advantages; quietness and clarity of light to name but two. So this

Lent let us be still for a time and then look again! The scene will have changed and it won't be a mirage!

*Rev K Sobey  
retired Baptist Minister*

## From desert to flood

Recently, I arrived at Chapel to find the kitchen awash with water and more pouring from a pipe under the sink. I did what I do best and panicked, running along the road to Steve and Mandy Bain's house, for help. Everyone at Chapel is so grateful for all Steve did that morning, not only finding the stopcock (I had no idea where it was), sorting out the pipework and stopping the flood, but also mopping up the mess! Thank you, Steve! (GR)

## Tailpiece

Through the windows, very near  
We see horses, rabbits, deer -  
Providing from God's great creation  
To God's Word the illustration.  
The graves remind us all of death.  
One day will bring our final breath  
But through the year there's life as well  
From snowdrop, daffodil, bluebell.

*RH*

*Gill Redman  
paradiselost@btinternet.com*

## Regular times

**Services** every Sunday morning at 11.00 for about an hour (coffee served at 10.45)

**Chapel Prayer** meeting every Sunday morning from 9.20 - 9.40

**Communion** on the first Sunday of each month at 12 noon for 15 minutes





# COMPUTER PROBLEMS?

**01373 812804**

Email  
Advice for new users  
Anti-virus defence  
Web sites  
Custom programming

Networks - home & office  
Home tuition  
Web access  
Privacy & security  
Repairs

[www.technojeeves.com](http://www.technojeeves.com)

[info@technojeeves.com](mailto:info@technojeeves.com)

No Job Too Small



## Local Electrician

Part "P" registered NAPIT approved  
Domestic and Commercial Work Undertaken  
Third Party Testing

Call for a Free no obligation Quotation

Tel: 01749 850769

Mobile: 07779 429786

email:

[iain@fushi-electrical.co.uk](mailto:iain@fushi-electrical.co.uk)

[www.fushi-electrical.co.uk](http://www.fushi-electrical.co.uk)



## E G MARTIN LTD Heating Oil Distributors

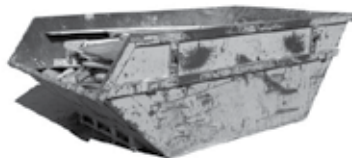
Telephone 01373 822784

Victory Road, West Wiltshire Trading Estate  
Westbury, Wiltshire, BA13 4JL

## WESTERN SKIP HIRE

Telephone 01373 865247

Victory Road, West Wiltshire Trading Estate  
Westbury, Wiltshire, BA13 4JL



## Windows, Doors & a whole lot more!

- **ENERGY RATED** windows - reduce your heating bills
- **NEW SECURITY** windows with Shootbolt locking
- **EXPERT FITTING** by our own fully trained team
- **REPUTATION** Over 26 Years of satisfied customers

## Come & visit our Indoor Show Village

See our full range of Windows, Doors  
Conservatories & our **New Orangery!**  
at Woodcock Industrial Estate, Warminster

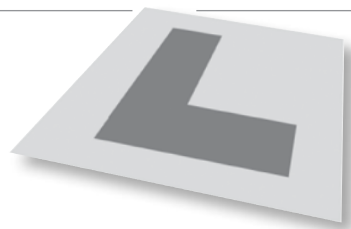
Tel 01985 215566  [www.NewWindowsLtd.co.uk](http://www.NewWindowsLtd.co.uk)

# newWINDOWS





# Tales from the passenger seat



Sometimes I have to politely bite my lip and refrain from giving a response that could, under different circumstances, be justified.

A student who was exceptionally gifted at maths, but not so gifted at learning to drive, was perfectly serious in asking how many degrees certain corners were, so that on approach, he would know how many degrees to turn the steering wheel.

Another one was convinced that speed bumps could and should be treated like cattle grids: the faster you went over them, the smother they would become. Many times despite my verbal instructions, I would have to dual brake him to avoid our heads being smashed into the car roof. He did eventually cotton on to how to drive.

There was a lady who lived down a narrow country lane. At the beginning of each lesson it would be foot down on the accelerator "well nobody comes the other way my dear". Then, as we returned home at the end of the lesson, it would be the same – drive as fast as possible, because "nobody comes the other way my dear". It took a while for her to understand that if she was going up or down her lane, then it might just be possible that someone else might actually be coming the other way...

I have been asked, whilst we are following a car that we have been following for a while, keeping exactly the same distance behind

them "what speed is the car in front doing"?

Having taught rather a lot of pupils, I have had variations on all the above before, and so have learned not to be surprised. But I did have a new one a little while ago that made me sit up a bit. It was dustbin day, and from any other pupil I would have laughed along with them at their little joke, but this particular pupil was serious. We had just passed a dustbin with the house number 30 written on it, and by coincidence, as we then entered a 40mph zone, we passed a dustbin with the house number 40 written on it and yes, dear reader, the genuine question was "do they write the speed we can drive at on the dustbins in case drivers don't see the 30 or 40mph signs"? Now that one did make me scratch my chin for a bit.

I am well aware that my job is to be able to teach in a friendly, efficient and polite manner pupils of any ability. I am flattered that I have been asked, therefore I would never make fun of them. I take the view that we all have different talents. Not everyone can be good at learning to drive, just as not all of us are good at music, art, or maths and so on. So whilst it is fun to share these experiences, I do not identify any pupils to anyone. I do have to be alert though, to be able to differentiate from those pupils who are having a laugh, and those who are deadly serious...

*Steve Dayman-Johns*

## **Corsley Reading Rooms**

Attractive function hall, smaller meeting room and kitchen facilities all available for hire

Parties • clubs • meetings • classes • etc

*Contact Rosemary Collins for details*

**01373 832789**

## **NEED HELP WITH YOUR GARDEN?**

Hedge cutting • Lawn mowing  
Strimming • General gardening

**Call Rob Clements**

**Tel 01373 832683 Mob 07586 337118**

## *Wren House*

**Residence for the retired and elderly**

We offer a range of care and accommodation to cater for the varying needs of retired and elderly people, either in the full care of Wren House, or assisted living in our two Coach House flats. Alternatively, more able and independent elderly people may choose to purchase an Orchard Retirement Apartment, with the assurance of care facilities close at hand.

**Mrs Ellie Simmonds - Manager**

Wren House, 32 Vicarage Street, Warminster, BA12 8JF

Telephone 01985 212578

## **Bluebell Interiors**

**Bespoke Kitchens  
and Fitted Furniture**

**27 High Street, Warminster,  
Wiltshire, BA12 9AG**

Telephone  
**01985 988192**

Email  
**bluebellinteriors@blueyonder.co.uk**

**Free Quotation Without Obligation**

## **JMW Accounting**

Cost-effective accounting, bookkeeping,  
VAT and payroll solutions for  
sole traders and local businesses

**01373 822363 or 07790 325321**

email **jackie@jmwaccounting.co.uk**

**www.jmwaccounting.co.uk**

## **Paul Ledbury**

**Quality Painting and Decorating**

**30 years experience**

**INTERIOR AND EXTERIOR  
GENERAL MAINTENANCE**

**5 Hampshire Gardens  
Westbury, Wiltshire  
BA13 3EX**

**Telephone 01373 858163  
Mobile 07976 242045**



## Personal Training

### Outdoor Group Workouts

### Nordic Walking

For more details 07801 496235  
or visit [www.ecofitness.co.uk](http://www.ecofitness.co.uk)

## Jammy Jewellery

Personalised fingerprint  
and footprint jewellery



[www.jammyjewellery.co.uk](http://www.jammyjewellery.co.uk)

## DAVID NOBLE

APPROVED ELECTRICAL CONTRACTOR

- Complete installations
- Minor works/repairs
- Testing
- Intruder alarms
- Lighting design



5 Swaledale Road  
Warminster, Wiltshire  
BA12 8FH

Tel 01985 214630  
Mobile 07970 618232  
[dcnoble@btinternet.com](mailto:dcnoble@btinternet.com)



*Wiltshire Pet Care*

## Dog Walks and Holiday Pet Care

01985 988268

07878 754987

[www.wiltshirepetcare.com](http://www.wiltshirepetcare.com)

Qualified, Experienced, Registered, Insured

## Allsorts of Fencing

*Peter Allsop*

[allsortsoffencing.co.uk](http://allsortsoffencing.co.uk)

All types of domestic and agricultural  
fencing supplied and erected

Also:

- Decking and patios
- Sheds, pergolas and archways
- Topping of fields and paddocks

[Allsorts-of-fencing@hotmail.co.uk](mailto:Allsorts-of-fencing@hotmail.co.uk)

**01373 832339**

**07710 180551**



## KB Landscape

30 years in landscaping

Phone

**01373 832371**

Mobile

**07951 297173**

**Kevin Brixey - for quality and experience**

5 Red Cottages Corsley Warminster Wiltshire BA12 7PS

Landscaping  
Patios and paths  
Turfing and seeding  
Brick and stone walling  
Decking and pergolas  
Block paving  
Gravel drives  
Pond work  
Fencing

**Judith Helliard's view from over the hedge...**

# Countryside Matters

February saw some mixed weather, though living in the south of England we missed the colder, harsher weather that they have experienced further north. Winter isn't over yet; east coast America are having extremely cold weather and we have often found that it moves across the Atlantic to the UK a week or so later – by the time you read this we could be back into real winter! On the bright side, at least the daylight hours are getting longer and by the 29th March we will be into British Summer Time.

As winter draws to an end the last of the hedge trimming and hedge-laying is carried out – the birds can start to make their nests in safety. Farmers try to make as much use of home produced manures as possible and so dirty water and farm yard manure is spread onto the fields before ploughing begins. Young stock will be allowed out to graze, but only where the soil has good drainage; they will supplement their diet from silage and hay as the grass has very little feed value so early in the year.

Most of the lambs are born indoors for safety nowadays where they can be monitored hourly by the farmer or shepherd. Most ewes will produce twin lambs and sometimes triplets, which means that not

only do you have to make sure the mother gets enough of the right amount of food and plenty of water, but where there is more than two lambs the third one may have to be fed with milk from a bottle or even adopted on to another ewe who may only have one lamb of her own. The first hours and days are critical to lambs and a strong bonding must be set up before they face the big wide world outside where it may be cold, wet and windy. Lambs have to face predation from carrion birds, foxes, badgers and even dogs, who will attack young or sickly lambs.

Please do be careful when walking anywhere near sheep for the next few months as ewes may be heavily pregnant and can miscarry if frightened. The can also become parted from their young if frightened or chased; lambs separated from their mothers will quickly die of cold and hunger.

Sadly we have recently had a number of farm vehicles stolen at night. Not only is this very annoying and inconvenient, it is expensive to replace and reinsure them. Please be observant both day and night to unusual activity. Take a note of vehicle make, colour and registration numbers and report it to the local police station; it may be your property that is stolen next time.



*Getting married? Special occasion?*

*Classic car for hire ~ 1960 Hillman Minx Estate*

*Chauffeur ~ bows ~ flowers ~ champagne*

*Reasonable rates*

*Please contact Amanda on*

*01373 827795 or 07720 673698*



## Frome Park Bowling Club

Come and Play Bowls!

An ideal opportunity to help you lead a healthier lifestyle, socialise and enjoy new challenges. Come and make new friends and learn skills this summer with Frome Park Bowling Club.

Give it a try! Please phone us on 01373 452069

For more information go to our website [www.fromeparkbowlsclub.co.uk](http://www.fromeparkbowlsclub.co.uk)

## debbiedetox

**New Wellbeing Centre,  
Courtleigh House,  
Westbury Leigh**

Specialising in colonic hydrotherapy,  
obesity and diabetes management

*RICTAT registered*

*Exercise referral level 3*

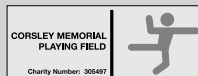
for more information,  
contact Debbie by email at

**[debbiedetox@live.co.uk](mailto:debbiedetox@live.co.uk)**

or by phone on

**07707 215591**

## Available for Hire



Great outdoor space with  
play equipment, gazebo  
and pavilion with kitchen.  
Party without messing up  
your own home!

Please contact Marion Liquorice for  
more information

01373 832314

07796 544565

[marion@nmc2.co.uk](mailto:marion@nmc2.co.uk)



# Small ads

£1 for EACH item for sale or wanted (cash only please) - at one of the two drop-off locations)

**Please note: no cash, no advert!**

## FOR SALE

Immaculate **Rocking Horse**. Light brown fur with faux leather saddle and reins. Used very little as kept at grandparent's house – **£40**. Please ring Ann McKenna on **01373 832763**

## FOR SALE

Collection of antique farm/garden implements which all make interesting garden displays; to include...

- Chaff cutter on stand
- Root cutter on stand
- Stone pedal knife sharpener
- Seed drill

**£450** or will separate. Buyer to collect please. Contact **01373 832530** or **07840 683652**

## WANTED

Space suitable for use as an artists studio for long term rent in Corsley/Chapmanslade area. 100 sq ft (approx) ideal size but anything suitable considered. Ideally with natural light and electric. Hot water a bonus but not essential. Access needed to take work to and from studio. Toilet useful but not essential. Hours of use to be agreed with owner. Please contact Samantha West by phone **07855 440648**, **01373 455634** or email **sam@samantha-west.co.uk**

## Answers to Bob's Bafflers

- 1 Hg
- 2 Portsmouth
- 3 Moonlight Serenade
- 4 Pax
- 5 Tarzan
- 6 150
- 7 Morris dances
- 8 1973 (1st January) along with Ireland and Denmark
- 9 Torch
- 10 Jupiter
- 11 Adelaide
- 12 Drury Lane

## Local organisation adverts

£2.00 per month for a small boxed advert or £7.50 for a full page. Full page adverts are allocated depending on space available and cannot be guaranteed. All monies must be at one of the two drop-off locations (Barter's Plant Centre or Acres Supply Garden Centre) by **4pm** on the **19th** of the month. Please note: no cash, no advert!

## Trade advertising

Annual trade advertisements (12 issues, when space is available)

1 space	(69mm wide x 33mm high)	£22.00
2 spaces	(69mm wide x 66mm high)	£42.00
3 spaces	(quarter page - 69mm wide x 100mm high)	£60.00
4 spaces	(138mm wide x 66mm high)	£75.00
6 spaces	(half page - 138mm wide x 100mm high)	£104.00

Trade advertisement material should be supplied in print-ready format, to the chosen standard size and correct shape.

For trade advertising enquiries, please contact David James (Trade advert coordinator/Treasurer) at either [thebridge832@gmail.com](mailto:thebridge832@gmail.com) or **01373 832443**.



## Garden Machinery Specialist

Authorised Dealer

**HONDA**

**STIHL**

SALES • SERVICE • PARTS



## Professional Tree Surgeons

- Tree pruning
- Felling
- Hedge trimming
- Barn-dried logs

Andy Brake

01373 832965

[www.mendipmowers.co.uk](http://www.mendipmowers.co.uk)

Green Farm Ind Est, Chapmanslade, Westbury, BA12 4AN

01373 830429

[www.newlandstreecare.co.uk](http://www.newlandstreecare.co.uk)

**cloud**  
homecare

Quality care and  
support in Warminster  
and the surrounding  
villages



**We are a small, Corsley based care provider**

**We provide care to people who need support  
to remain living in their own home**

**Please telephone or email us, or visit our  
website for further details**

Tel. 01373 832 597 enquiries@cloudhomecare.co.uk  
[www.cloudhomecare.co.uk](http://www.cloudhomecare.co.uk)



# ACRES SUPPLY

WHERE GARDENS GROW



ACRES SUPPLY GARDEN CENTRE  
BAY TREE FARM, CORSLEY  
NR WARMINSTER  
WILTS, BA12 7PP

**01373 832591**

**OPEN 7 DAY A WEEK**

**[www.acressupply.com](http://www.acressupply.com)**

## FG COLLIER

KITCHENS • BATHROOMS • INTERIORS

WHOLE HOUSE DESIGN & SOLUTIONS



FG COLLIER LTD 29-35 EDWARD STREET WESTBURY WILTSHIRE BA13 3BL  
TEL 01373 822227 EMAIL [INFO@FGCOLLIER.COM](mailto:INFO@FGCOLLIER.COM) WEB [FGCOLLIER.COM](http://FGCOLLIER.COM)