

The Bridge

June 2018

monthly magazine for the villages
of Corsley and Chapmanslade



Explore Fables and Fairytales, enjoy a summer barbecue with lots of games, join the WI ladies for an inspirational talk, have a go at the pub quiz, savour some coffee mornings, there's lots to do in June...



Mendip Mowers

Why Honda?

*There is a simple reason why you will see
so many Honda products still hard at work
after many years of service;
they are built to last.*

OFFERS AVAILABLE THROUGHOUT THE YEAR

- Mowers • Tillers • Brush cutters
- Blowers • Chainsaws
- Hedge trimmers

Barn Dried Logs Also Available



GARDEN MACHINERY SPECIALIST

SALES • SERVICE • PARTS

www.mendipmowers.co.uk 01373 832965

Unit 7, Green Farm Industrial Estate, Chapmanslade BA13 4JJ



Frome Heating Specialists

J L and M W Knight

Heating and plumbing engineers specialising in:

Oil and gas boiler servicing

Boiler replacement

Energy management

Pressurised hot water systems

Underfloor heating systems

Frome family business established 1964

Stavanger, Corsley, Nr Warminster, Wiltshire, BA12 7QL

Call 01373 832578



199876

The Bridge

monthly magazine for the villages of Corsley and Chapmanslade

Articles

Please submit articles either by email to viv.thomas146@btinternet.com or by hand (legible handwriting please!) and take them to the drop-off locations at Barbers Plant Centre, Chapmanslade, or Acres Supply Garden Centre, Corsley by the deadline.

News, reports, updates, thank you's, etc, from individuals or local organisations are free – the more the merrier – keep 'em coming!

File types

Save your files as .doc – please don't send .docx files – I can't always open them successfully.

Advertising

Small ads are £1 for each item whether 'For Sale' or 'Wanted'.

Events/local organisation ads (churches, clubs, playgroups, etc) are £2 per month for a boxed advert.

Full page ads cost £7.50, are subject to space availability and cannot be guaranteed,

If you are advertising, don't forget to take the fee – cash or cheque in a sealed envelope please, to either of the drop-off points (Barbers Plant Centre or Acres Supply).

Please note: no cash, no advert!

Trade advertising

Please see information on the last page.

In this issue...

4 Memorial Playing Field
latest news

8 Bob's Bafflers
a cunning quiz

12 Science
biology: changing the world

Parish Council briefing
Corsley **16**

Seven Open Doors
news from the pews **21**

Corsley WI
news from the ladies **26**

32 Parish Council briefing
Chapmanslade

37 Whitbourne Chapel
chapel colloquy

42 Countryside matters
views from over the hedge

Deadline

**Deadline for articles
or adverts for the next
issue of The Bridge is
4pm 19th June**

**Please note that no
items will be accepted
after this date**

June

Tuesday 5th

Village Coffee Morning - 10 am - 12 noon, Corsley Reading Room

Sunday 10th

Chapmanslade Explorer Trail – 11 am - 4 pm

Monday 11th

Corsley Parish Council Quarterly Meeting – 7.30 pm, Corsley Reading Room

Thursday 14th

Corsley WI - 7.30pm, Corsley Reading Room, 'Starting my Lavender Business' with Fiona Cordel

Thursday 21st

Church and Community Coffee Morning 10 am - noon Three Horseshoes Chapmanslade

Sunday 24th

Chapmanslade Barbecue – 12 noon, Chapmanslade Village Hall

Pub Quiz – 6 pm, Cross Keys, Corsley

July

Tuesday 3rd

Village Coffee Morning - 10 am - 12 noon, Corsley Reading Room

Thursday 5th

Chapmanslade Parish Council – 7.30 pm, Chapmanslade Village Hall

Thursday 12th

Corsley WI – 7.30pm, Open Meeting Corsley Reading Room, "Alternative Packaging" by Prof. Nigel Brown

Saturday 14th

Military Wives Choir Concert – 7 for 7.30 pm, St Margaret's Church, Corsley

A Night for Our Stars – 7 pm, Chapmanslade Village Hall

Thursday 19th

Church and Community Coffee Morning – 10 am - 12 noon, Three Horseshoes Chapmanslade

Saturday 21st

Corsley and Chapmanslade Churches – Pimms and Cream Teas – 2.30 pm to 5.30 pm, Job's Mill, Crockerton



Diary Dates

August

Saturday 4th

Elizabethan Evening presents 'The Hound of the Baskervilles' – Manor Farm, Corsley

Sunday 5th

Chapmanslade Cream Teas

Tuesday 7th

Village Coffee Morning - 10 am - 12 noon, Corsley Reading Room

Thursday 9th

Corsley WI – 7.30pm, President's Supper Evening at 26 Birchwood Close

Thursday 16th

Church and Community Coffee Morning – 10 am - 12 noon, Three Horseshoes
Chapmanslade

Sunday 26th

Songs of Praise followed by Cream Tea – 4.30 pm, Corsley Showfield

September

Monday 3rd

Corsley Parish Council Quarterly Meeting – 7.30 pm, Corsley Reading Room

Tuesday 4th

Village Coffee Morning - 10 am - 12 noon, Corsley Reading Room

Thursday 13th

Corsley WI - 7.30pm, Corsley Reading Room, 'From Womb to Tomb', Fiona Carruthers on the importance of meat in the diet

Thursday 20th

Church and Community Coffee Morning – 10 am - 12 noon, Three Horseshoes
Chapmanslade

Cinema Corsley – new season of films begins

Wednesday 26th

Corsley and Chapmanslade Churches Light Bites Soup Lunch – 12.30 pm - 2 pm, Corsley Reading Room

Thursday 27th

Chapmanslade Parish Council – 7.30 pm, Chapmanslade Village Hall

Corsley Memorial Playing Field

Latest news

Chairman Neil Carpenter's latest news from the playing field

Summer has finally come and grass cutting has started in earnest. The cow parsley is now in flower along with the blossom. The cricket square, after all the work done over winter by Ped, looked perfect for the Corsley/Chapmanslade match on 27th May, the results of which will be known by the time this edition of The Bridge is published.

After several false starts we have also managed to put a new outer surface on the pizza oven. It will soon have a final coating of lime wash to complete the refurbishment.

The playing field is a great asset to the village which we are constantly trying to improve for the users, so we are looking for some new helpers and trustees to keep the field looking wonderful and open to everyone. Please get in touch if you can spend some time helping or would like to be on the committee.

We have had a number of ideas for improving the playing field such as getting some outside gym kit. We would like to hear your comments about this and any other ideas you have on how to make the playing

field even better. Please get in touch by email or phone.

Can I ask people not to park in the first 15 metres of the car park? The tennis club needed to get an ambulance on the field following an injury recently and couldn't because a parked car prevented it from turning in.

We have been disappointed to note that a number of residents have been dumping their grass and hedge clippings in the playing field. The field is not a dumping ground, so can we ask that people get rid of their green waste through the council bins, tip, or ideally compost it themselves. Residents that continue to dump waste will have their direct access to the field removed.

Chairman, Neil Carpenter
Neil@nmc2.co.uk
Marion@nmc2.co.uk
01373 832314
07796 544565





Pears Electricians

Nigel Charteris - BSc (Hons) M.I.E.T.



Professional Local Electrician

A HIGH STANDARD OF WORK AT REASONABLE RATES

Part P registered with www.napit.org.uk - Testimonials and references available

Faults & Troubleshooting • Repairs & Improvements
Installation Condition Reports • Boiler Wiring

www.pearselectrical.co.uk

01985 213314 or 07717 534026



OAKLEY

GARDEN MACHINERY

Grove Lane, Marston Trading Estate
 Frome, BA11 4AT



**For Sales, Spares,
 Workshop Service
 and Repairs**

Hayter
 Mountfield
 Lawn King
 Westwood
 Stihl
 Honda
 Toro
 Echo
 Husqvarna
 Shindalwa
 Oregon
 and more...

www.oakleyfrome.co.uk

01373 467712

18a Bath Road
 Warminster, BA12 8PD

Julie Marshall
 Professional Hair Stylist

Telephone: 01985 300972

Mobile: 07540 635214

juliemarshall66@blueyonder.co.uk

STUNNING COASTAL VIEWS ON CORNISH COAST NEAR LOOE



Six bedrooms (sleeps 12)

Private access onto beach

Pets allowed

Top class facilities including wi-fi

Rent for week or even long weekend

Downstairs bedroom and shower room

For more info: Sandy Parrish 01373 832522

*Bride
 by Design*

Bridal gowns and accessories

2 Silver Street
 Warminster, BA12 8PS



Please contact us to
 arrange an appointment

t. 01985 217216

[e. info@BridebyDesign.biz](mailto:info@BridebyDesign.biz)

www.bridebydesign.biz

The **co-operative** funeralcare

- 24 hour service
- Free bereavement advice
- Pre-paid funeral plans

WESTBURY 48 Warminster Road, BA13 3PF
01373 858142

WARMINSTER 3 George Street, BA12 8QA
01985 220105

FROME 1 Nunney Rd, Frome BA11 4LA
01373 473426



southern coop

ORCHARD UPHOLSTERY

RE-UPHOLSTERY OF
ANTIQUE AND MODERN
FURNITURE

❖ FREE ESTIMATES ❖

COLLECTION AND
DELIVERY SERVICE

Telephone Lesley
01373 464870

Sharon's Foot Clinic

SAC Dip FHPT SAC Dip FHPP



Fully insured and highly trained

For the professional treatment of:
Corns · Callus · Cracked Heels
Athletes Foot · Fungal Infections
Thickened Nails · In-growing Nails
Diabetic Foot Care · Verrucas
Nail Cutting · Nail Reconstruction

Contact Sharon on
01373 836734 or 07728 200402

Clinic appointments at
12 Sunny Hill, Nunney, BA11 4ND

Home visits also available

CHAPMANSLADE

Fables & Fairytails

Explorer Trail



SUNDAY 10TH JUNE 11 AM - 4PM
BBO, CREAM TEAS, DRINKS
RAFFLE, STALLS, FANCY DRESS



Parish of
Corsley and
Chapmanslade



Busy Bees
Pre-school



All proceeds go to the church, school PTFA, Busy Bees and the village. Start and finish at village hall.

www.facebook.com/chapmansladeexplorertrail

Bob's bafflers

- 1 What is lowered by a Beta Blocker?
- 2 Along with Ionic and Doric, which is the third Greek order of architecture?
- 3 Where would you find the world's second highest mountain K2?
- 4 Which Test cricketer played in an FA Cup Final for Arsenal in 1950?
- 5 Which drug took its name from the Greek God of dreams?
- 6 A Blue Orpington is a type of what?
- 7 Which spirit is Pimms No 1 based on?
- 8 Where would you ache if you were kicked on the tarsus?
- 9 In which US State is Death Valley?
- 10 The illness pertussis is more commonly called what?
- 11 The Hanging Gardens of Babylon were in which modern day country?
- 12 In the USA, which is the Lone Star State?

Answers on page 44

A Night For Our Stars

In Aid Of
Julia's House Children's Hospice
And
Dorothy House Hospice

14th July 7pm
Chapmanslade Village Hall

A live musical evening by young local performers in
memory of a loving friend. All proceeds go to the
charities who give their support to our loved ones
in times of need

Tickets
£5

Book in advance
Limited spaces

Live music!

Music from
across the ages



Tickets from Georgia Lawrence:
glawrence1904@gmail.com



UPVC REPAIRS WILTSHIRE.CO.UK

FOR PROFESSIONAL WINDOW & DOOR REPAIRS

Are you having a problem with your UPVC windows or doors?

- ✓ Misted glass
- ✓ Broken or faulty window hinges
- ✓ Faulty locks
- ✓ Jammed windows or doors
- ✓ UPVC door adjustments
- ✓ Window and door handles

Call us – we are here to help

All work guaranteed

01373 430010 07795 143228 www.upvcrepairswiltshire.co.uk

the three horseshoes

Open daily from 10AM-11PM
serving delicious home cooked food
(12-3, 6-10 Mon-Sat. & all day Sun.)

Enjoy a refreshing drink in our beer garden
with spectacular views of Longleat and Cley Hill,
or indulge with one of our regular meal deals
by the warm open fire on a bitter winter's day.

We organise monthly events,
featuring live music, comedy + much more!

follow us on Facebook for more details



threehorseshoeschapmanslade



Fairwood Road, Dilton Marsh, Wilts BA13 4EL
T: 01373 826792 E: bookings@fairwoodlakes.com



- Café • Soft play • Fishing
- Outdoor play areas
- Luxury lakeside lodges
- Touring pitches

www.fairwoodlakes.com



YOGA CLASSES

Corsley Reading Room

Tuesdays 7-8.30 pm

Wednesdays 5.30-7 pm

(other classes also available)

Jackie Jasper

01373 832301 yogawithjackiej@gmail.com





**Shake off those pounds and
dance yourself fit.**

Chapmanslade Village Hall
Monday 7.30pm - 8.30pm

Longbridge Deverill Village Hall
Thursday 7pm - 8pm

For all levels of fitness and
NO experience needed.

For more information please contact
Amy 07830 119032

Busy Bees Pre-School Chapmanslade



For children aged 2-5 years
Weekdays (term time only) from 8 am-5 pm

Please contact Kelly Williams to arrange a
visit and a free trial session for your child
Breakfast club and after-school club available
(term time only)

Telephone 07749 257608
busybeespre-school@hotmail.co.uk

Jackdaw Plastering



Phone : 07504977650

Email : andy@jackdawplastering.com

Web : www.jackdawplastering.com

**Qualified *Insured *Clean *Reliable*

For your
Heating Oil Supplies
contact

KINCH FUELS

at their
local depot in
Devizes, Wiltshire

Telephone 01380 727102

*The company you and
your home will warm to*



LUXURY PRIVATE CAR HIRE

A locally based, door-to-door, personal
service for up to six passengers in
air conditioned comfort
AIRPORTS • SEAPORTS • ANYWHERE

For bookings, please call
01985 840088 07903 307734

WEST COUNTRY SWEEP

Domestic & Commercial Chimney Services

Andrew Leigh

07545 822109

westcountrysweep@gmail.com



Kevin O'Mahony

Quality Painter and Decorator

Internal and external painting

Artexing

Wallpapering

Coving

Hand painted kitchen units

07724 349447 or 01985 301197

email kevo7743@googlemail.com

www.thewarminsterpainter.co.uk

Keep active with physiotherapy

Alison Rossiter MCSP HPC

Chartered Physiotherapist

30 years experience in physiotherapy specialising in the treatment of muscle and joint problems.

Helping people to improve their health and fitness through treatment, exercise and advice.

Home visits can be arranged.

Daytime and evening appointments available.

If you need help please contact:

Beckington Physiotherapy 01373 831483

Email: arossiterphysio@gmail.com

www.beckingtonphysio.co.uk



Downlands
TREE SURGERY

For Expert Tree Care

Telephone Jon Burgess on

01985 214320

Skilled pruning

Tree felling

Stump removal

Qualified and insured

**Free tree health
survey and quotes**

DAVID EDMUNDS & CO

ACCOUNTANTS & TAX CONSULTANTS

Specialists in the self-employed, small and medium business and self assessment.

Preparation of accounts, VAT, PAYE, income tax and corporation tax returns.

Personal, friendly service

Evening appointments by arrangement

Telephone 01225 334447

Home 01373 832430



**First Aid & Compliance
Training Ltd**

Training for the workplace and home.

Wide range of accredited

- First Aid • Health & Safety • Fire Safety
- & Food Safety courses

www.factltd.co.uk

T: 01985 302562

Biology: changing the world

Light pollution – can we see the stars?



In Chapmanslade and Corsley we live in a developed society with (usually!) constant electrical power. Those living in towns and cities may have constant light throughout the night from streetlights, 24-hour shops, garages, and the like. In the country, we are more fortunate in that we can occasionally be away from artificial lights and lit only by the stars and the moon, although the skyglow from Westbury or Frome can usually be seen on the horizon.

I will always remember being in Australia at a remote research station and looking up at the sky on a clear night. Never have I seen so many stars, and for the first time really understood why the Milky Way was so named. However, recent data from orbiting satellites has shown that light pollution is increasing globally. It is not just the developing world that now has better power, and therefore more lighting. It is also the developed world moving from relatively low intensity tungsten lamps to much higher

intensity LEDs. These use less power, but may generate much more light.

Apart from limiting our ability to see the plethora of stars, is this a bad thing? One issue is safety. Being able to see where you are walking at night is necessary, and lights around your home can help deter burglars. However, outside lights which only come on when movement is detected are a better deterrent for criminals than a constant light. They are also less likely to trouble your neighbours, who might find a constant light next to their home annoying. In fact, you may become a 'criminal' yourself if your lighting is too bright or wrongly directed, as exterior lighting is covered as a statutory nuisance under the Clean Neighbourhoods and Environment Act (2005). This arises from the campaign by the British Astronomical Association's Commission for Dark Skies (www.britastro.org/dark-skies/).

Apart from annoyance, excess lighting can cause damage to our health and to wildlife.

Long-term sleep deprivation caused by night lighting, particularly by the blue-white light from LEDs, may increase the risk of diabetes, cancer, cardiovascular disease and depression. Studies by ecologists have shown that light not only affects the behaviours of animals and insects that respond to artificial light, but that plants may be affected as well. In some cases (e.g. Trefoil) flowering may be directly suppressed by constant light and changes to the behaviour of nocturnal insects may reduce pollination. Even the buoyancy of algae in lakes is affected by skyglow from cities, altering the occurrence of algal blooms.

There are national and international campaigns to reduce the amount of light pollution. We can each help by ensuring our lighting is only turned on when necessary.

Nigel Brown is happy to receive comments, questions and, particularly, suggestions for future articles at nigelbrown48@gmail.com. The idea for this article came from a reader.

Church and Community Coffee Mornings

A warm welcome to come along to our church and community coffee mornings held each third Thursday of the month. We meet at The Three Horseshoes in Chapmanslade from 10 until noon.

So do come along if you have an hour to spare. Meet lots of friends, old and new, for a chat over a cup of Ben's freshly brewed coffee.

If you're new to the village, this is the place to come to be warmly welcomed and to say hello. Pauline, our vicar, and Debbie or Candy, our PCSOs, are often able to join us. We look forward to seeing you.



Corsley Show Membership

During June, letters will be sent to all 2017/18 and 2016/17 members with an application form for membership and tickets for 2018/19. To reduce costs/administration (and save them from being lost) they will be sent by email where possible. An application form will also be printed in the July edition of The Bridge. We do hope that as many local people as possible will join as your support to the Show is very important to its future.

Marion Moldon
(Membership Secretary)

ALLSOP CARPETS & FLOORING

DOMESTIC ♦ COMMERCIAL ♦ INDUSTRIAL

Christchurch Street West, Frome BA11 1EB

TEL: 01373 463866 MOBILE: 07887 953014

www.allsopcarpets.co.uk

Chapmanslade Village Hall

Can be hired for all your functions:
parties, weddings, meetings, classes, etc

For hiring information, phone
Ken Davies 01373 832034 or email
kennethdavies1949@gmail.com

KEYVOLUTION

Locksmith and
Carpentry Services
serving the Wiltshire Area

Warminster based company offering locksmith and carpentry.
Police cleared, reliable and honest service.

Any other quote beaten.

- BS3621 lock upgrades for house insurance approval
- Garage doors, locks and running gear
- Lock repairs – specialising in Chubb mortice locks
- Upvc double-glazed door and window locks fitted – even old ones!
- Door or window locks opened destructively or non-destructively (indemnity required for these services)
- Digital code locks supplied and fitted
- All types of carpentry work – mostly 2nd fix and maintenance

Check out my website

www.keyvolution.co.uk



or call Ben on 07748 214799 or 01985 219799

White Horse Windows

Windows, Doors, Conservatories and
more...

Local Company, Exceptional Standards
10 year guarantee

Windows Fascia & Guttering
Doors Conservatories

CERTASS Registered

For a Free Quotation call Ryan on
07909 441442 or 01373 302594

Mole Catcher

01373836350

07512681111

No Mole

No Fee



Hypnotherapy for you!

Solution Focused Hypnotherapy is a safe, practical
therapy and can help you to:

- Feel better about yourself
- Achieve work, play, lifestyle balance
- Improve many areas of your life

Fiona 07801 436633

fiona@balancehypnotherapy.co.uk

www.balancehypnotherapy.co.uk

Balance
Hypnotherapy
Solution Focused Hypnotherapy



nickcranston@acertreesurgeons.co.uk

www.acertreesurgeons.co.uk

01373 832026 or 07590 986261

85 High Street, Chapmanslade

- FREE advice and quotes from a friendly, professional and accredited company fully insured and Council approved
- We are highly skilled and qualified to undertake all tree work from fruit tree pruning to technical dismantling of huge tree structures near buildings as well as hedge trimming and care.
- We also sell logs!

BARTERS PLANT CENTRE

'Passionate about Plants'

Shrubs ♦ Perennials ♦ Trees ♦ Roses ♦ Conifers
Climbers ♦ Fruit Trees ♦ Hedging ♦ Soft Fruit ♦ Seeds
Bulbs ♦ Basket Plants ♦ Bedding ♦ Vegetable Plants
Christmas Trees ♦ Holly Wreaths
National Garden Gift Tokens



Opening Hours

Mon to Sat	9 - 5	(March to October)
Mon to Sat	9 - 4.30	(November to February)
Sun	10 - 4	(March to June + December)

Just off A36 in Chapmanslade, Wilts, BA13 4AL
01373 832694 www.barters.co.uk



JONATHAN CORP

Painter and Decorator
General House Maintenance
Sturford Mead Farm, Corsley
Warminster, Wiltshire, BA12 7QU
01373 832213

Postlebury News R Gould – Newsagent

All papers and magazines
Home delivery service

01749 850556 07979 452677

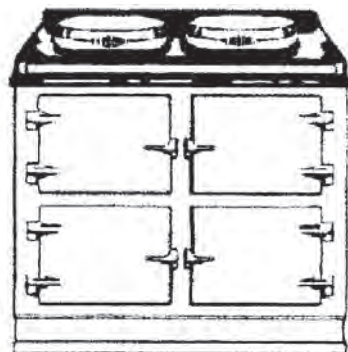


T A P Services

Telephone 01373 463106

tapservices@btinternet.com

Authorised Stanley Service Agent
Oil Range Cooker & Oil Boiler Servicing



Range Cooker Servicing

Corsley Parish Council

Parish Council Briefing

Chairman, Neil Britten, rounds up the PC's activity in May

The PC had one meeting in May, the Parish Council Annual Meeting, the main item being the election of this year's Chair and Vice Chair. Several other issues were also considered, including developments at the Old School Playing Field, future possibilities at the Bay Tree Close site, Streetscene and the effects of the Government's new legislation and rules on Data protection. One planning application was also considered.

Elections and councillors' responsibilities

Chair

There was one nomination for Chair and Neil Britten was unanimously elected

Vice Chair

There was one nomination for Vice Chair and Mike Butler was unanimously elected

Other responsibilities/liaison duties:

Judith Helliar

Corsley & Chapmanslade PCC; Corsley Parochial Charities

Olly Hares

OSPF maintenance; Corsley War Memorial Playing Field

Gill Parkinson

Footpaths; Reading Rooms

Simon Jasper

Streetscene

Steve Meyer

Planning

Mike Butler

Finance

John White

Thynne Trust; Corsley Parochial Charities

All councillors are Trustees of the Len White fund.

Planning applications

18/0364/FUL & 18/03918/LBC - Single storey garage extension to existing outbuilding at Court Farm, Court Lane (Grade II listed)

A previous application for conversion of the outbuilding (old stable) to a studio had been approved; this application, for full and listed consent (identical documents), adds a single storey garage onto the same building on its southern end. The proposed style matches the existing building and the extension has no material impact on the listed features of the property, The PC registered no objection.

18/00934/FUL - Removal of Condition 7 to allow Lavender Lodge to be used as a permanent separate residency

The PC objected to this application on the grounds that it had not been shown to be unviable as a holiday let. Wiltshire turned down the application, not directly on these grounds, but on the basis that such a change of use to a building in a "remote" setting, outside the main village, in open countryside, breached Wiltshire development policies.

The application has now been re-submitted **(18/04155/FUL)** on the grounds that Wiltshire has no declared policy on the retention on 'tourist' infrastructure, Longleat's change of letting policy has drastically reduced the letting potential of the building and that national policy on re-use of redundant buildings should take precedence.

Streetscene

Simon Jasper provided a written local update and there had been a PC and Town Council Highways brief on the wider county issues, attended by the Chair. The main points from both were:

Parish Steward

There had been a lack of local attention from the Parish Steward in recent weeks and the next visit is expected in June. The priority has been placed on weed-killing in Birchwood Close and signage on the A362.

The Highways brief cast some light on the situation with parish stewards. Across the County there are 22 stewards, but they are 'multi-hatted'. Work within villages is discretionary and is a result of the reports collected on the Wiltshire reporting app and a lot of direct liaison work between PC's and the stewards, on which Simon has worked assiduously with great success. In recent weeks, the stewards have been pulled off local streetscene work to work on the major pot-hole repair effort and they were also pressed into service during the spells of snow and ice when the 'Beast from the East' struck, plus a recent blitz on litter on the main highways. The Highways team, once again, stressed the importance of individual reporting of any highways-related issues.

On the subject of pot holes, Highways emphasised that these should be reported via the app as soon as possible. I questioned their stance on damage to car

tyres from pot holes and they were clear that if Highways were unaware of pot holes they were not responsible. They do carry out patrols themselves, but the onus is very much on self-help and reporting.

Speedwatch

The PC has now written to the Wiltshire Police Coordinator with a view to getting their approval to mount a speedwatch and we await their response.

Lorry Watch

As previously reported, County support for this has been reduced. Simon has done some research into another known local lorry watch area, Bradford-on-Avon, a relatively well-off Town Council and a scheme with 40 volunteers. It very much reflects the general picture in that the County have cut their support to the B-o-A scheme by 80%. The County licencing office are overwhelmed by the returns being put in and B-o-A claim only eight prosecutions in the two years of their scheme. They had investigated a VRN recognition system, but rejected it as being too expensive.

The PC debated this issue again, particularly in light of the experience of Olly Hares in reporting three identified vehicles from one company, travelling westwards in convoy. The company claimed that it tracked its vehicles and that they were not in Corsley at all! Unfortunately, it was not possible to get the VRN at the time of observation. This incident highlights the need to collect VRN numbers, not always easy, and the denials of companies when faced with factual evidence. The PC discussed other means of recording information, particularly photographic evidence as dates and times are recorded on digital images. It was agreed the legalities of this course would be checked.

continued...

Road Safety

Simon has compiled an A362 safety dossier after the discussions at the APM and these will be presented and considered at the next CATG on 6th June.

Other highways issues

Finance

The accent at the highways brief was on financial stringency and the efforts made by the County to maximise their efficiency in tackling priorities. In the next couple of years some of the major highways contracts are due for renegotiation and renewal, particularly those related to streetscene issues. Highways anticipate that there will be further review of the provision of services, with the likelihood that some will be offered for delegation to town and parish councils, with potential consequences for precept levels. They particularly highlighted rapidly rising costs associated with waste material arising from Parish Steward activities, e.g. gully clearing, grass cutting, other arisings and of fly tipping.

Litter

Highways were very clear the voluntary schemes for litter picking were to be discouraged on the grounds of safety. They were equally clear that no additional litter bins would be provided by the County. If these were required then they should be locally funded, but Highways' view was that there was no correlation between the provision of additional bins and a lessening of the amount of rubbish deposited on roadsides – rather the opposite. Neither would the Police prosecute on the evidence of a single observer.

Old School Playing Field

As has been routinely discussed in these briefs, the PC has been considering how best to improve and preserve this amenity. Four key decisions were taken at the meeting on 14th May:

The proposal offered by Judith Selman and Chris Johnson to develop a wildflower meadow area was accepted and work will start this year.

A proposal from Neil Carpenter for sponsored tree planting was accepted and will take place this autumn, integrated with the wildflower meadow plans and additional trees to replenish the jubilee planting.

A new pedestrian and vehicle entrance will be created this year at the eastern end of the car park, re-using the redundant old school gates and fencing, suitably refurbished.

The grass area will be mowed monthly by a volunteer team until the wildflower team take over.

Bay Tree Site

As is very clear, the Bay Tree site development is nearing completion and it is expected that the first adverts for applications to occupy the housing will be posted by Housing4Wiltshire in June. It is emphasised, however, that the bungalows are social housing, owned by Wiltshire, and can only be occupied by those who are eligible under the housing register conditions. These can be viewed on Housing4Wiltshire website and have been summarised in previous briefs in The Bridge magazine.

The PC has discussed potential further development on the Bay Tree site, particularly the possibilities for open market housing in the future. It is clear from these consultations that, since Bay Tree is a 'rural exception' site, there are specific policies under the Wiltshire Core Strategy which apply and limit how the site may be developed. These effectively mean that it can only be used for social housing and then only if there is a fully-justified local need. Open market housing can only be considered if these conditions are met

and it can be shown that the site is not financially viable without an open market housing element. At present, Wiltshire is concentrating on the current social housing roll-out across the county and there is no current plan for any further such development. The PC agreed to keep a watching brief on any such future plans and the potential for inclusion of an open market element.

Government Data Protection Rules (GDPR)

The new GDPR rules came into force 25th May. By this date, any public body, including Parish Councils, must have in place a plan to meet the new rules which place obligations and duties to protect any personal data collected and used in the execution of the PC's legal obligations. The PC has received advice from Wiltshire and from the National Association of Local

Councils and has formulated an outline plan to put in place the required policies and safeguards in the way in which it manages the minimal amount of personal data held and used. Details of the new processes are expected to be finalised within the next month and will be published on the PC section of The Bridge website in due course.

Dates of next meetings (all at 7.30)

Quarterly Meeting	18th June
Quarterly Meeting	3rd September
Quarterly Meeting	3rd December

Occasional meetings will be scheduled to consider planning applications and other urgent issues. Please watch the village notice-boards.

Neil Britten

*Chairman Corsley Parish Council
01373 832515 or 07810 764714
neil.britten@btinternet.com*



Warminster Military Wives Choir

St Margaret's Church, Corsley
7 for 7.30 pm, Saturday 14th July



Refreshments at Manor Farm Barn

Tickets £12.50 from Ian Buick 01373 832318,

members of the Rotary Club of Frome, Corsley and Chapmanslade Churches

NOTEBOOKS2

Desktop PC - Laptop - Smartphone - Tablet

Apple - Macbook Pro / Air - iMac - iPhone
iPad - Mac Mini

Repairs / Upgrades / Accessories

Notebooks 2 Go / Tech Repair
51 Haynes Road, Westbury, BA13 3HD

Tel - 01373 865400

Email - support@notebooks2go.co.uk

Cross Keys

Community Free House

Lyes Green, Corsley, BA12 7PB

Bar Open all day!

Food

Monday to Saturday

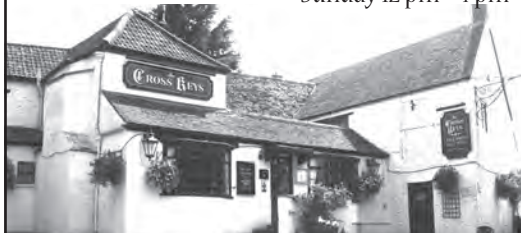
11 am - 11 pm

Sunday 11 am - 10 pm

Monday to Saturday

12 pm - 2.30 pm and
6 pm - 9 pm

Sunday 12 pm - 4 pm



01373 832406

www.crosskeyscorsley.co.uk

Facebook @CrossKeysInnCorsley

Corsley Tennis Club



New members welcome –
all ages, all abilities

Three hard courts available all year

Weekly junior coaching available

Low subscriptions

Contact either

Emma Fox 07512 009580

Sue Newell 01373 825560

www.corsley-tennis.uk

Little Cuckoo's Pre-School

Lyes Green, Corsley, BA12 7QH

Friendly, dedicated pre-school in the heart of the
countryside for children aged 2-5 years

Monday, Wednesday, Thursday and Friday
9 am - 3 pm during term-times

We accept 2-year-old funding in
accordance with Wiltshire Council guidelines

Mother and Toddler group Tuesday mornings
10 am - 11.30 am during term-times

SESSIONS AVAILABLE NOW

Speak to Hayley McMahon

Pre-School Manager on 01373 832298

Find us on facebook or visit www.littlecuckoos.co.uk

A free trial session is available

Registered Charity Number 1064800



CHRIS SEVIOUR
Building Services

07894 708949

cmseviour@gmail.com

Roofing, Loft conversions,
Extensions, Plastering,
Natural stonework



S B Services



Contact Sean

07828 671566

*For your garden maintenance
and home improvements*

Seven Open Doors

Dear Friends,

It's June and summer really is here! The weather, which was still fluctuating between warm and cold when we enjoyed the most amazing Rogation Sunday, has at last become more predictable. Our farmers who were marking time in one of the latest springs in memory can at last begin to catch up. Nature has a great capacity to recover, and we must hope that this summer is no exception.

When I looked for a theme early in May, the news was full of the consequences of the misuse of Facebook personal data. I can see those of you who are not at all interested in social media heading to the waste bin with this page! Until recently, I was firmly of the same view, but reluctantly became a user of Facebook in order to be able to share Church information with those who, perhaps, don't read local magazines. I was not in favour of such 'new fangled' pastimes and highly critical of the tendency of younger people to be welded to their smart phones! So having become a Facebook user, I was convinced I would never get sucked into that sort of behaviour! Of course, I was wrong, and the subsequent weeks saw me constantly looking at all the activities and news being generated on the village Facebook site. My email inbox became full of 'have you seen' messages increasing the pressure to look once again. This demanded action and, having stopped these random emails, some semblance of normality has descended once again on the Buick household!

What possible relevance can this have to us as Christians and the life of our churches? Given our recent discussions across the benefice, looking at what the future holds for us, many of the conclusions confirm what Pauline has long been urging us to do. In basic terms, we have no future unless we connect with the whole community, particularly our newer generations. The recent Good Friday Messy Church in St Philip and St James' Church was a perfect example of this. Young families picked up news of the event on social media placed there by one of our marvellous supporters. The result was amazing! We found ourselves running out of the materials we had brought, as a large number of young families had a great experience enjoying both the activities and the service which followed. Put simply, we had communicated in the right 'language'.

This is not a plea for us to turn our backs on the traditions of our Christian heritage. One of the joys for me, in leading school assemblies, is the use of the traditional Lord's Prayer. We live in a benefice which encompasses everything good about village life. The closeness which allows us all to care for each other, combines with diversity, celebrating the full spectrum of worship including 1662 services alongside newer forms. The events in Acts chapter 2 describing the coming of the Holy Spirit at Pentecost, embody God's message of inclusiveness with the multinational crowd surrounding the Disciples hearing his word in their own languages. Summer village events like the recent street party in Crockerton and village explorer trail day in Chapmanslade this month give us the opportunity to connect with each other in the best possible way. Pauline's wish for 'the community to be at the heart of the church' has never been more apt as we look to the future.

With love and prayers

Ian Buick, Churchwarden and Lay Worship Leader

June Church Diary

Sunday 3rd June: First Sunday after Trinity

8am at St Michael the Archangel, Brixton Deverill: 1662 Holy Communion

9.30am at St Margaret's, Corsley: Eucharist

10.30am at St Peter & St Paul's, Longbridge Deverill: Morning Worship



Monday 4th June

10.30am at 9 Cleyhill Gardens, Chapmanslade

Time to Think – details from Phil on 832845



Tuesday 5th June

7.30pm at the 129d Forest Walk, Chapmanslade

After Alpha Home Group – Isaiah 35 - details from Trudi on 832393



Sunday 10th June: Second Sunday after Trinity

9.30am at St Philip & St James', Chapmanslade: Family Holy Communion

10.30am at St Mary the Virgin, Kingston Deverill: Eucharist

11am at St Margaret's, Corsley: 1662 BCP Matins



Fables and Fairy Tales

Chapmanslade Church will be on the Explorer Trail from 11am



Sunday 17th June: Third Sunday after Trinity

10.30am at St Michael the Archangel, Brixton Deverill: Eucharist

10.30am at St Margaret's, Corsley: Family Worship



Monday 18th June

10.30am at Wheelwrights, Chapmanslade

Time to Think – details from Phil on 832845



Tuesday 19th June

7.30pm at The Anchorage, Corsley

After Alpha Home Group – Psalm 8 - details from Trudi on 832393

Thursday 21st June
10am to 12pm at the Three Horseshoes, Chapmanslade
Church & Community Coffee Morning



Sunday 24th June: Birth of John the Baptist
9.30am at St Philip & St James', Chapmanslade: Eucharist
10.30am at St John the Baptist, Horningsham: Eucharist



Sunday 1st July: Fifth Sunday after Trinity
8am at St Mary the Virgin, Kingston Deverill: 1662 Holy Communion
9.30am at St Margaret's, Corsley: Eucharist
10.30am at St Peter & St Paul's, Longbridge Deverill: Morning Worship

Rogation Service on 6th May at Summerleaze

The Rogation Service was very well attended on a beautiful day and the setting was absolutely right for a service of thanksgiving for all of God's creation. Our thanks to Ross and Sheila Daniell for their excellent hospitality.

Fundraising

Our Summer Coffee Morning was held at Manor Farm, Corsley on 12th May. A social occasion with everyone enjoying home-made cakes with coffee; and plenty of other home-made produce and plants for sale. The morning raised £616 for church funds.

On the same morning we held the Summer Draw for our 50/50 Club. There were ten cash prizes ranging from £200 to £25. Congratulations to our lucky winners. The 50/50 Club costs £24 for each membership and 50% of the fee goes to maintaining the churches, and the other 50% is returned as prizes in two prize draws per year. You may hold as many memberships as you wish!! If you want to join the 50/50 Club please contact Neil Britten or Keith Muston.

On 10th June our church Parish is participating in the Fables and Fairy Tales Explorer Trail. The church in Chapmanslade will be buzzing with young people and their minders from 11am. There will be refreshments available at the church. The event will benefit four local organisations including the church Parish and the School and Busy Bees.

On the 14th of July St Margaret's will be hosting a concert by the Military Wives Choir with the proceeds being shared between the church, Frome Rotary and the Choir.

On Saturday 21st July we will be returning to the delightful Job's Mill by kind invitation of Lady Sylvi McQuiston for an afternoon of Pimms and cream teas. Further details of these two events will be in subsequent issues of the Bridge.

continued...

We will of course have our usual stall at the Corsley Show on August Bank Holiday Monday. The day before the Show at 4.30pm we shall be holding a Songs of Praise service at the Showground and this will be followed with a cream tea!!!!

Foundation Governor at Chapmanslade School

We currently have a vacancy for a Foundation Governor at the school. If you are interested in this important role please contact Phil Jefferson.

Welcome, Congratulations & Farewell

We welcome into our church family William Hector Allsop, baptised at Longbridge Deverill on 6th May; Lydia Jane Welch, baptised at Horningsham on 13th May; and Esme Patrino and Luna Patrino Stuart baptized at Longbridge Deverill on 20th May.

The funeral of Albert Whitton Falconer took place at Longbridge Deverill on 7th May. We offer our prayers and sympathy to the family.

Rural Dean	Rev Pauline Reid revpauline@btinternet.com	01985 841290
Lay Pastoral Assistants	Richard Dean Barbara Hughes Claire Tanner	01373 832594 01373 832273 01985 218099
Pastoral Visitor	Alan Hopkinson	01373 832393
Churchwardens		
St Philip & St James'	Ian Buick	01373 832318
St Margaret's	John Helliar	01373 832803
Deputy Churchwardens		
St Margaret's	Currently vacant	
St Mary's	Harcourt Gough	01373 832039
St Philip & St James'	Janet Aylesbury	01373 832752
PCC Secretary	Phil Jefferson	01373 832845
PCC Minute Secretary	Sue Fear	01373 832074
PCC Treasurer	Keith Muston	01373 832755
Planned Giving Officer	Judith Helliar	01373 832803
Choir Leaders	Marion Muston Claire Tanner	01373 832755 01985 218099
Tower Captain	Marion Moldon	01373 832672

Copy for Seven Open Doors should be sent to Keith Muston at themustons@btinternet.com subject 7ODs or phone 01373 832755.

If you would like to receive weekly news of Church events and activities, please send your email address to the above, with subject 'Through the Open Doors' or download a pdf from the 'churches' pages at www.corsleyandthebridge.co.uk

Expert repairs for
PCs & Laptops
Macs
iPads
Tablets



Frometech

Tuition available
Macs, PCs and iPads

Take the stress out of IT
Call Today!

Security Review of
your computer

01373 470170
www.frometech.co.uk

Qualified & Experienced Counsellor

Lisa Adams Dip.Couns. Reg.BPC

Weekly sessions offered for adults on an open-ended or short-term basis according to individual requirements

Tel: 07904 843122

email: lisaadams.corsley@gmail.com

Ski Apartment – French Alps

Ski in/ski out – sleeps 6

Well equipped – immaculate condition

For more information or to book online visit:

w. www.ski-les-cimes.co.uk

f. facebook.com/ski.les.cimes

e. lesleygolledge@gmail.com

t. 01373 832533

npv plumbing & heating

Installation • Servicing • Repairs

Bathroom and tiling specialists

All plumbing and heating work undertaken

Our fully qualified plumbers offer all general plumbing services from boilers to bathrooms. We will gladly advise clients on the most suitable products for their property – be it heating systems, boilers, radiators, bathrooms or showers.

07738 940355

www.plumbersfrome.co.uk

Hypnotherapy

If you need help with:

Anxiety
Depression
Phobias (such as flying or spiders)
Panic attacks
Relaxation
Weight management
Smoking cessation
Natural childbirth
Confidence
Public speaking
Exam nerves
and much, much more...

Call ANJI HOLLAND on
07944 647 978 / 01373 832 898
to enquire or just for a chat

www.hollandhypnotherapy.com

With practices in Chapmanslade and Bath

I am a member of the National Council for Hypnotherapists
and am bound by their code of practice and ethics

Corsley WI

May news

Carol Seward rounds up the May meeting and announces some forthcoming events



At the April meeting of Corsley WI, members gave a warm welcome to Cordelia Rowlett of Vallis Veg, which sells vegetables through the Frome Food Assembly and delivers fresh vegetables in and around Frome. Cordelia started the business after moving from London and deciding to grow her own veg. Apart from the market gardening aspect of the business, Cordelia has animals including pigs, sheep and ducks. In conjunction with Forest School they run a project entitled Shared Earth Learning Co-op, which has a permanent base on the farm where those with disabilities can help with the plants.

Cordelia has also diversified into several other ventures, with the addition of allotments, a wildlife area with a permitted footpath and a campsite in amongst the trees in their woodland area, an idyllic spot which can also be used for outdoor events. Pauline Scott gave the vote of thanks for the illustrated talk.

Alice Cambridge then proposed the WI resolution which this year is that 'mental health matters as much as physical health'; that it should be as acceptable to talk about mental health as it is about physical health and that there should be better support for mental illness. Members unanimously supported the resolution which is to be put forward to the NFWI AGM in June.

The competition for a limerick to include a vegetable was won by Alice Cambridge,

second was Eileen Leete and Cath Fricker was third.

Everyone is invited to join us for a Mystery Trip by coach on Wednesday 12 September. For reservations please phone Carol on 01373 832446. Future Federation events include a workshop on mono printing and the Annual Council Meeting at Salisbury in October.

The June meeting of Corsley WI will be held in the Reading Room at 7.30pm on Thursday 14th June, when Fiona Cordell will give a talk entitled Starting My Lavender Business. The competition is for My Favourite Perfume Bottle. New members are always very welcome.

Are you new to the area? Don't know anyone? Come and make friends at our WI meetings, held in the Reading Room at Corsley on the second Thursday each month at 7.30pm. If you need a lift or would like someone to come with you, phone Carol Seward on 01373 832446 or email carol.seward@talktalk.net for details and any other information about Corsley WI.

Can you play skittles or scrabble, or would like to learn? We are looking for new WI team members, so please contact us if you would be interested. For information about the Bridge Club and Lunch Club, please ring Pauline Scott on 01985 215760.

HORNINGSHAM VILLAGE FAYRE

SUNDAY 10TH JUNE 2018

11AM - 4PM (Live music until 6pm)

**FREE ENTRY
FREE
PARKING**

Village Fayre



**Military
Wives
Choir**



**Live Band
4pm - 6pm**



Horningshamvillagefayre

**CRAFT
STALLS**

**PLANT
SALE**

**FACE PAINT
&
GAMES**

**CREAM
TEAS**

**FUN DOG
SHOW**

**LOG CABIN
RAFFLE**

DANCE

Grand draw with cash prizes
Whisky raffle
Classic cars
Forestry skills
Kids - Fruit & Vegetable creature competition
Kids - Miniature garden competition

Art, Crafts, Glassware, Gifts, Tombola,
Cakes, Bric-a-brac, Artisan food,
Bouncy castle, Tea 's, Plants, Face
painting, Hair accessories, Stationery,
Sand art, Book art, Kids zone,
Ice cream, BBQ, Pizza and
Cambodian street food

07543 186770
elstonbailey@gmail.com

Chapmanslade Motor Services

**Vehicle repair
and servicing**

**Brake
specialist**

**MOT preparation
and repairs**



**Batteries
Exhausts
Tyres**



Quality service at competitive rates

FREE ~ wheel balancing and tracking with new tyres

FREE ~ courtesy car

Electronic diagnostics available – most makes covered

Green Farm Industrial Estate, Chapmanslade

01373 832188 or 07711 256927





**01373
455911**

CLEANING & MAINTENANCE 2000 LTD

OUR SERVICES INCLUDE

- Domestic Cleaning
- Commercial Cleaning
- Upholstery Cleaning
- Carpet Cleaning
- One off Spring Cleans
- Garden Maintenance
- Home & Garden Clearance

 www.busybees2000.co.uk 
info@busybees2000.co.uk

**JOHN E S JONES
& SON LTD**

**GENERAL
BUILDER**



Carpentry, painting and
decorating, extensions, uPVC,
facias and gutters, fencing,
decking and patios

Please call

01373 832600

07795 177920

07810 646335



Clean-it

Recommended by



Carpet and upholstery cleaning specialist

01373 462059 07779 247961 www.clean-it.biz

Home ~ Private ~ Lettings

15%
Minimum
Savings

Garston
Veterinary Group



Spread the cost of your pet's preventative healthcare into affordable monthly payments

Our Wellness Plan has been specifically designed so that your pet receives all of the essential vaccinations and parasite treatments and also a whole range of additional benefits to help ensure that they remain in the best possible health.

Cats £10.30
per month

Dogs from £12.50
per month *

*please contact one of the surgeries for specific prices for your dog. Prices are based on adult weight.

wellness@garstonvets.co.uk

Frome	Melksham	Trowbridge	Warminster	Westbury
01373 452225	01225 617779	01225 754021	01985 213350	01373 301446



www.garstonvets.co.uk



Domestic Appliance Sales and Repair Service

Domesticare

21 Keyford, Frome

www.domesticarefrome.co.uk



01373 467351

Childminder

Ofsted registered

Full and part time. Before and after school

Holiday spaces available

Pick-up and drop-off offered

Call 01373 832854 or 07883 025476

d.m.rawlings@outlook.com

JERRY RAYNER :
boiler maintenance :

01985 841461 or 07775 755981

FOR SERVICING AND BREAKDOWN
OF OIL BOILERS
also AGA and RAYBURN

- Competitive rates
- Friendly, helpful and efficient
- Call now for a quote

Pippa's Pet Care

Dog Walking · Cat Sitting
Small Animal Care

07745 482187 01373 839074

Pippaflack@icloud.com

Facebook/Pippa's Pet Care

DRIVE IN AND PICK YOUR OWN FIREWOOD

Woodchip, Mulch,
Hardwood Logs,
Softwood Logs,
Kindling,
House Coal, Smokeless Coal,
Delivery available



Mon to Fri: 7.30am - 4.15pm

Closed on Sundays & Bank Holidays

Open Saturdays from Sep-Mar only until 12 noon

01985 213507 www.longleat.co.uk/forestry

5% discount for tenants of Longleat Estate



**LONGLEAT
FORESTRY**

TEA & sympathy

Considerate catering at a difficult time

All our food is homemade, we provide delicious teas, sandwiches and cakes through to more elaborate options.

We offer a truly bespoke, caring and professional service.



Telephone Kim Clark on 01373 832151 or 07843 056916

e-mail kim@teaandsympathy.uk.com

www.teaandsympathy.uk.com

CHANTRY CONSTRUCTION

stone walling • patios

drives • extensions

prompt reliable service

mini digger and driver for hire

01373 836787 07855 343388

COMPUTER & LAPTOP REPAIRS
UPGRADES / SYSTEMS & LAPTOPS

VIRUS REMOVAL / BROADBAND
WIRELESS / NETWORKING



FAST, FRIENDLY, PROFESSIONAL SERVICE
COMPETITIVE RATES
ONSITE OR WORKSHOP

CCO CompTIA

call
01373 302901

www.ntscomputing.co.uk
help@ntscomputing.co.uk

LAPTOP REPAIRS

We also replace
laptop screens,
keyboards,
CD-DVD drives,
fix overheating
and more

Forget-me-not

• GARDENING SERVICE •



Weeding, pruning, planting,
fence painting, etc

01373 464416

07890 850465

Do you need a plumber? Call...



Paul Antell Plumbing

07890 366832

01373 467427

Professional, reliable, friendly and local
paulantellplumbing@talktalk.net
www.paulantellplumbing.co.uk



www.darchoil.com

BOILER SERVICING & REPAIR

**All our technicians are
OFTEC registered and approved**

Call us on **01935 473302** for an instant quote or visit www.darchoil.com, fill out the form and one of our team will call you back during office hours

- Boiler servicing on-demand or as part of a Contract Service Agreement
- Servicing of oil, commercial and domestic boilers undertaken
- Group discounts available on request – call us for information

Call us on **01935 473302** or email **info@darchoil.co.uk** for more information

TREVOR & JON *by Amy*

Unisex Hair Salon

01225 754001

trevorandjonbyamy@outlook.com

Unit 2 Stone Mill, Trowbridge BA14 8BU

Rose Knight



Dog and cat
minding service

01373 464904

07773 435254

knight_rosemary@sky.com



JD Weed Control

JDweedcontrol@gmail.com

Call James on 07850401547

Free, no obligation quotation
Flower Beds - Patios - Borders - Drives
Non-Chemical Weed Control & Prevention

James, Rob and Adam, former employees of Roger Patch Ltd are pleased to introduce...

CMP Complete Ltd General Builders

19 Swaledale Road, Warminster, BA12 8FH

James 07801 868288

Rob 07766 905131

email cmpcompleteltd@gmail.com

HETAS registered to fit woodburners

Chapmanslade Parish Council

Parish Council Briefing

Notes from the Parish Council meeting held on 10th May

The meeting began with nominations for Chairman and vice-Chairman. Keith Muston was elected as Chairman and John Lewis as vice-Chairman.

The meeting was opened to the public and the following issues were raised:-

- **Update on Lochailort and Barters Farm**

The Chairman reported that his latest information was that Lochailort were still awaiting a response from Wiltshire Council Highways.

- **Telephone box**

It was suggested that the telephone box be moved away from the main road by a few feet as sighting is a major problem at the junction. It was thought that in making this request to BT, the response by them might be to remove the telephone box altogether as it is used so infrequently.

- **Cobblestone area in Southcroft**

It was pointed out that the cobblestones are in very poor condition. As the ownership of this cobbled area is not clear it was agreed that the Council will try to establish who owns the it.

- **Generators**

There was a lively discussion about the ongoing need for the generators. The Chairman reported that the SSE confirmed that the issue was the subject of legal discussions and therefore could not be discussed further.

The minutes of the last meeting were accepted and there were no matters arising that would not arise on the agenda.

General Data Protection Regulations

The Clerk reported that she had attended two meetings on GDPR. It was agreed that the Clerk and two Councillors would form a working group to progress the work on GDPR to ensure our compliance.

Policies and Standing Orders

It was agreed that the PC would adopt the model Policies and Standing Orders and customize as required for our PC.

Internal Audit

The Clerk reported the audit had been completed and was discussed. The audit details will be forwarded to the LA Auditor and the details will be posted on the website.

Payments

As well as the regular payments it was agreed to provide £150 towards the cost of a booklet being produced to commemorate the service personnel from the Parish who lost their lives in the First World War. It was also agreed to provide the Clerk with a laptop to assist in maintaining data integrity and compliance with GDPR.

Correspondence

Localism Act and Register of Interests
All the Councillors were reminded of the need to keep their details correct and up-to-date.

White line markings

The Chairman reported that he will be asking the next meeting of the Area Traffic Group to arrange for the markings in the village to be refreshed.

• Weight limits

The first signs have been erected by WC but we are now awaiting Highways England to carry out their works. There was a lively discussion about the weight limits and the delay in the 7.5 tonne limit due to the A303/A350 improvements.

The Chairman will make contact with our MP to see if we can make progress on this matter.

• Village Plan

The Chairman had submitted a report to the Area Board.

• Gore Lane

Advised by WC that there were legal discussions regarding the new building in Gore Lane.

• Speedwatch

It is now common to record 600 vehicles per hour travelling through the village. A new speedwatch coordinator is urgently required.

• Footpaths

The new footpath group is active and several footpaths already adopted. The meeting was reminded how important it was to keep dogs under control especially in the vicinity of animals. It was reported that a landowner was experiencing problems with sheep being worried by dogs and, in extremis, would shoot dogs worrying sheep!

Next meeting

The next Parish Council meeting is scheduled for **Thursday 7th June** but may be re-scheduled.

Keith Muston, Chair
01373 832755

themustons@btinternet.com

Corsley and Chapmanslade Churches

Cream Teas and Pimms

Job's Mill Garden, Crockerton, BA12 8BB
by kind permission of Lady Silvy McQuiston

Saturday 21st July
2.30 pm – 5.30 pm

Tickets £7.50: phone 01373 832803 or 01373 832845 for tickets or further details

Education, education, education

in South Sudan

I am sure that many of us are familiar with the great success of the Juba Diocese Model Secondary School. Indeed many residents of the Parish generously provide bursaries for children fortunate enough to be accepted into that school.

Today I would like to talk about Primary school education in the capital of South Sudan, Juba. The Diocese of Juba has six primary, or as they are called in Juba, 'basic' schools. With children in South Sudan having the second lowest access to education in the world the pupils of these schools are very fortunate.

These schools are not free and paying fees for schooling is a great hardship to the families. However, education is valued so highly in South Sudan that many make huge personal sacrifices in order to pay them. We have a bursary scheme in place and at the moment 30 children benefit from this.

Although I have helped to administer these bursaries for several years, my knowledge of how a basic school in Juba operates was very limited, so I penned an email to the Diocese school inspector asking her a number of questions. Here, in her own words, are some of the answers:

"Basic schools run from P1 to P8, no fixed age for education, if a pupil fails the end of year exams they repeat that year. So it is

not unusual for a 17 year old to be in basic school"

"Most teachers are not qualified because they are mostly secondary school leavers who have not gone to teachers training college. They get in-service training or at institute of education leavers"

"There are no meals in schools and in most cases pupils end up fasting until they return home. Some parents do arrange something small for their pupils in form of money or packed lunch. If a school has a source of water that is the meal for most pupils and they have it at lunch time"

Thanks to the generosity of the Salisbury Diocese, three two-week teacher training courses have been funded. These appear to have helped raise teaching standards as improvements in exam results are evident. We hope to secure funding for a further three-year training program. An ICT course has also been funded to help teachers improve their personal computer skills. Even by South Sudanese standards, teachers are very poorly paid and those who remain in the profession must be praised for their dedication.

The answer about school meals and water speaks volumes. It is difficult to see a quick solution to this, the UN World Food Program used to provide a meal at midday

for the basic school children; unfortunately this no longer happens. A recent magazine article compared the cost of a basic meal of beans and rice around the world. Using various baselines the cost was deemed to be \$1.20 in New York; the same meal in South Sudan, the worst-ranked country in the survey, would cost \$321.70.

It is wonderful that, even with widespread civil war in the country, outbreaks of violence common-place in Juba, astronomical inflation and, with an economy that has all but collapsed, education still continues.

If we compare education in Juba to a pyramid, the base would be the start of basic school education. The steps are many - finishing basic school, passing entry exams to secondary education, passing annual exams until the top of the pyramid is reached with a School Certificate. What could a person achieve for their country and their family by reaching the top of that pyramid!

If you feel that you would like to help a child at the base of the pyramid, a basic school bursary costs £65 a year. For more information, please contact Richard Paul at rpaul2011@hotmail.co.uk

Chapmanslade Barbecue

12 noon, Sunday 24th June

Join us for lunch and meet friends old and new!

- ★ Lots of fun and games
- ★ Kid's races ★ Tug o'war
- ★ Egg throwing and lots more!
- ★ Tea and cakes

Let us know if you would like to help or to run a stall!

Proceeds to Chapmanslade Village Hall

For more information contact Denise Page on 01373 832485 or at dandcpage74@gmail.com

Piano Lessons

All standards welcome

Debbie Rickhuss

Teacher of Pianoforte and Theory

Contact 01373 832829

07747 499990

rickhuss@tiscali.co.uk



M W Garden Services

20+ years experience

A tailor made service for all types of garden maintenance

Insured and CBI's checked

mark22.weaver@mypostoffice.co.uk

Telephone 01373 832854

Mobile 07921 818452

Dashing Dusters

- Cleaning and ironing to a high standard
- General domestic assistance
- Commercial cleaning
- Reliable
- Reasonable rates
- References available

01373 832484 (evenings)

Steve Dayman-Johns

Driving Instructor

Condensed Courses and

Gift Vouchers available

Tel 01373 865422 - Mob 07730 445648

email stevekdj@gmail.com

anatomy clinic

28 East Street Warminster BA12 9BN

01985 219122

www.anatomyclinic.co.uk

[f](https://www.facebook.com/anatomyclinic)@anatomyclinic

Beauty

Organic facials, manicures, pedicures, tinting, threading and waxing

Chiropody

Athletes foot, diabetic assessment, fungal infections, ingrown toe nails, nail trimming, verucas

Holistic

Aromatherapy massage, deep tissue massage, hot stones massage, Indian head massage, Swedish massage

Whether you're looking for treatment or a treat, we offer a wide range of therapies to suit every need - all under one roof!

Hardwood logs for sale

(cut to size if required)

FREE DELIVERY

R M Log Supplies

Beckington

Call Robin on

07876 621929

Whitbourne Chapel

'He is not here; he has risen...' Matt 28:6

'Risen'!

I find modern films and television dramas hard to watch, thanks mainly to bad language and gratuitous violence, so when I recently found saw four DVDs of films including Jesus, I snapped them up!

Three were from the 1950s, 'Ben-Hur', 'Quo Vadis' and 'The Robe', all dramatised from well-known novels. 'Ben-Hur' is on our tellies frequently, especially at Christmas and Bank Holiday weekends. 'The Robe' and 'Quo Vadis' appear on freeview channels occasionally. All the films mention Jesus - 'Ben-Hur' and 'The Robe' have the crucifixion as part of the storyline - but Jesus isn't a main character; he's incidental, a 'hook' on which to hang the main plot.

I didn't expect much from a 2016 DVD, 'Risen'. Television programmes about Jesus debunk His story and our faith, so I thought this film would be the same. I was wrong. 'Risen' is based on the crucifixion, resurrection and ascension of Jesus, seen through the eyes of a Tribune in charge of the crucifixion and following events. This man oversees the burial of Jesus' body in Joseph of Arimathea's tomb; he directs the sealing and places guards on duty himself.

When the Tribune's later told his guards have run to the Pharisees, saying Jesus' body's been stolen, he's ordered to find it and the thieves. Rumours abound of Jesus being alive. Our Tribune walks into the

apostles' hiding place - and the Man he last saw on the cross is there, as well. Apostle Thomas enters and Jesus shows him his wounds; the Tribune sees them, too. He knows this is the man from the cross and follows the disciples to Galilee, hears Jesus ask Peter three times, 'Do you love me?' and he's there when Jesus ascends into heaven.

The whole story is simply told from the Gospels, with acting far-outshining that of the 50s 'stars'. If you find a copy of 'Risen' on sale in a shop or on the internet, snap it up! Christian or not, watch it and you won't regret the purchase.

Sunday School Memories

Chapel Secretary Ray Mead remembers his summers as a Sunday School leader: "Outings to Weymouth were arranged; camps were arranged, too, and we all went to Sandy Bay, Exmouth, and stayed in caravans. We found it hard to attract children on a Sunday, so we decided to go where the children were. We erected a marquee on the site of the present Hayesdown School (it was all fields then). We had meetings every week day for one week, after work from 6-7pm in the summer. We sang Gospel Choruses, learned Bible verses, had Bible Quizzes and Bible stories. It was easy to attract 50-100 children."

*Gill Redman 01985 215062
paradiselost@btinternet.com*

Regular times

Services every Sunday morning at 11.00 for about an hour (coffee served at 10.45)

Chapel Prayer meeting every Sunday morning from 10.20 - 10.40

Communion on the first Sunday of each month at 12 noon for 15 minutes

Bible study sessions as announced



COMPUTER PROBLEMS?

01373 812804

Email
Advice for new users
Anti-virus defence
Web sites
Custom programming

Networks - home & office
Home tuition
Web access
Privacy & security
Repairs

www.technojeeves.com

info@technojeeves.com

No Job Too Small



Local Electrician

Part "P" registered NAPIT approved
Domestic and Commercial Work Undertaken
Third Party Testing

Call for a Free no obligation Quotation

Tel: 01749 850769

Mobile: 07779 429786

email:

ian@fushi-electrical.co.uk

www.fushi-electrical.co.uk



E G MARTIN LTD Heating Oil Distributors

Telephone 01373 822784

Victory Road, West Wiltshire Trading Estate
Westbury, Wiltshire, BA13 4JL

WESTERN SKIP HIRE

Telephone 01373 865247

Victory Road, West Wiltshire Trading Estate
Westbury, Wiltshire, BA13 4JL



Windows, Doors & Conservatories

- Free quotes from our local experts
- Strengthen your home's security
- Reduce your heating bills
- Excellent offers



01985 215566
www.newwindowsltd.co.uk

**New
Windows**



Corsley Tennis Club News



Corsley Tennis Club staged an American Tournament on Sunday 13th May at The Corsley Memorial Playing Field. 18 players contested some close sets, resulting in Group A being won by Jenny Bishop and Sonia Glenn. Group B produced a tie between Ann Walker and Diana Hale, and Michael Clarke and Sue Kerfoot.

This annual tournament raises funds for a charity and the £50 raised this year will be sent to research for Brain Cancer. At the conclusion of play we all enjoyed a bring-and-share tea.

The Ladies' Doubles tournament is on Sunday 3rd June and the Men's Doubles on Sunday 24th June. Both tournaments start at 2 pm; spectators are welcome.

The club are continuing with Junior coaching with the club's professional coach Jon Dilena (07986 370080). The club welcomes membership enquiries and reminds Corsley residents that junior membership is free. Juniors living outside

Corsley pay a membership fee of £10. Emma Fox, Membership Secretary (07512 009580).

It will soon be the French Open and Wimbledon and these Grand Slams usually generate an enhanced interest in tennis. If your tennis playing is a bit 'rusty' or you would like to learn to play, then please do come and join us. The club has players of all abilities and has a reputation for being friendly. We operate a system whereby adults can attend three times as a visitor at a cost of £2 per session before they decide whether to join or not. Adult club sessions are on Tuesdays and Sundays from 10 am and on Fridays from 5.30 pm.

Further information and a membership application form can be found on our website www.corsley-tennis.uk.

*Marlene Latchem
Publicity Secretary
01373 832357*

Traditional Mole Catcher

07512 681111

01373 836350



For up-to-date information such as occasional parish council meetings, church services, previous editions of The Bridge, local clubs and activities, business listings, and other useful information, please visit www.corsleyandthebridge.co.uk
Want something added? Just email the Editor with your request!

Wren House

Residence for the retired and elderly

Wren House in Warminster is a long-established, elegant retirement home, specialising in individual care in gracious surroundings. Having just thirteen rooms, each with a private bathroom, we are able to offer the ambience of a family home, together with caring staff and the facilities to enable our residents to enjoy their later years with dignity.

Wren House serves fresh, locally-sourced, home-cooked food. Residents enjoy a varied activity programme which includes a gardening club and our own choir.

Mrs Ellie Simmonds

Wren House Ltd, 32 Vicarage Street, Warminster, BA12 8JF

Telephone 01985 212578

wrenhousewarminster@hotmail.com

www.wrenhousewarminster.co.uk

ST DAVIDS WHITSAND BAY CORNWALL



Holiday Let
Sleeps up to 8
01373 464870

www.stdavidswhitsand.co.uk



Joe Ricks
Independent Financial Adviser

*Pensions, Retirement Planning, Equity Release,
Wealth Management, Mortgages, Financial Protection*

07828 860 018 joe@matherandmurray.co.uk

www.matherandmurray.co.uk

Paul Ledbury Quality Painting and Decorating

30 years experience

**INTERIOR AND EXTERIOR
GENERAL MAINTENANCE**

5 Hampshire Gardens
Westbury, Wiltshire
BA13 3EX

**Telephone 01373 858163
Mobile 07976 242045**

TOENAIL CUTTING REFLEXOLOGY

IN YOUR OWN HOME

ALICE LEWIS

Telephone 01373 229335



Karina

Mobile Hairdresser

Tel. 01373 832823

Mob. 07742 690337

CLARION

electrical

Part P registered & guaranteed



Making household electrical circuits work safely

clarionelectrical@btinternet.com

*Fifteen
years in
the trade*

01985 216641 07766 355237

RICHARD ROBBINS

City and Guilds Trained Gardener

All aspects of Garden work undertaken

07510 130083

Your Local Electrical and Property Services

Call or email now for a
free quote 01373 464577
enquiries@lawrencefairfield.co.uk

**LAWRENCE
FAIRFIELD**
Limited



www.lawrencefairfield.co.uk



allsorts
of
FENCING

Your local Fencing Specialist

Stock Wire / Post and Rail / Close board
Decking / Patios / Gates / Sheds / Pergola

www.allsortsoffencing.com

01373 832339 / 07710 180551

Also: Topping of Fields and Paddocks

Seasoned Logs

free local delivery

Tel / text Garry on 07801 179917

loads from £120

Seasoned hardwood logs within a 15 mile
radius of Frome. All timber is ethically
sourced from local woodlands

We can supply hard- and soft-wood
mixed loads or hardwood only

www.woodlandworks.co.uk



KB Landscape

30 years in landscaping

Phone

01373 832371

Mobile

07951 297173

Kevin Brixey - for quality and experience

5 Red Cottages Corsley Warminster Wiltshire BA12 7PS

Landscaping
Patios and paths
Turfing and seeding
Brick and stone walling
Decking and pergolas
Block paving
Gravel drives
Pond work
Fencing

A view from over the hedge...

Countryside Matters

Spring has truly sprung, down on the farm

It's 4.30 am on 19th May and I am woken by the dawn chorus; what a wonderful sound to hear and how important to realise that the natural world is still out there even if our busy days are full of Royal Wedding news, football Cup Final and even bigger European and world matters.

Spring came in very suddenly and farm life has meant early mornings and late nights to get the field work done.

Cattle and sheep are now out enjoying fresh pastures, leaving the barns to be cleared of winter bedding and put on the land to enrich the summer hay crops, or to be ploughed in to spring-planted arable crops or maize. Heavy winter rainfall has increased the liquid slurry that is now spread on the land – increasing the natural way of improving the soil and crops.

Where possible, the first cut of silage was made at the end of May and the routine of grazing or cutting the grass every six weeks will continue through to the autumn.

The 60-day check on all the cattle for traces of TB took four days to complete, with the sad news that six of the cows have reacted to the test and must be slaughtered.



Cow parsley

Farming families, like so many others, will have enjoyed a day at the Bath and West Show – seeing the best food and stock that British farmers can provide.

Do try to get to a country show this year, or look out for a farm near you where, on the 10th June, Open Farm Sunday offers you the chance to see what life is really like down on the farm!

The countryside is looking beautiful with the freshness of the colours of the trees – the blossom brightening up our fields, woodlands and hedges with their promises of fruit and nuts later in the year. Elder blossom is ready to pick for those enjoyable summer drinks or natural medicinal products.

The beautiful displays of bluebells were followed by frothy cow parsley and majestic foxgloves; wild strawberries are growing in our lanes along with wild parsley to pep up your salads.

Enjoy your countryside in June.

Judith Helliar

Corsley Reading Room

Your 'village hall'

Chairman, Hugh Deed, reports on the latest happenings at the hall

A village map is now on display in the telephone box.

For those of you who bring or take books at the Coffee Morning, we have had a bit of a cull and disposed of the many books that we have had for months. In future, new books will be kept for no more than two or three Coffee Mornings and then passed on to another charity.

We have been pleased to allow the builders from the development at Baytree Farm to use our car park for four weeks, thus avoiding the problems this would otherwise have caused in the Corsley Heath area. They had a larger number of contractors on site in May and we were delighted to receive a small donation from them.

Please do promote and use the Reading Room for events. If we are to retain this facility we need to use it!



Full details about the hall and its facilities including how to hire are on the website or call Gill Parkinson (01373 832322) to discuss.

See website www.corsleyreadingroom.org.uk

Hugh Deed
Chairman of Management Committee
Chairman@corsleyreadingroom.org.uk or
01373 832897

Events run by the Corsley Reading Room Management Committee

Coffee Morning:

First Tuesday of the month 10 am - 12 noon

IT Classes/Club: see our website

Cinema Corsley: new season begins 20th September

Regular events run by other organisations

Lite Bites Lunches: 4th Wednesday of the month

Yoga: Tuesday and Wednesday evenings

Pilates: Tuesday afternoons

WI: second Thursday of the month (evening)

Committee members include: Vanessa Hyde, Jackie Jasper, Sue Kerfoot, Gill Parkinson, Jenny Ratty, Jill Westgate, David Carruthers.

Answers to Bob's Bafflers

- 1 They are used for abnormal heart rhythms and to protect the heart from a second heart attack but are also widely used to treat high blood pressure (hypertension)
- 2 Corinthian
- 3 It is located on the China–Pakistan border between Baltistan northern Pakistan and Xinjiang, China
- 4 Denis Compton
- 5 Morphine (from Morpheus)
- 6 Chicken
- 7 Gin
- 8 Ankle
- 9 California
- 10 Whooping cough
- 11 Iraq - because no physical evidence for the Hanging Gardens has been found at Babylon, two theories have been suggested. One is that they were purely mythical, the other theory is that they were actually in the city of Nineveh
- 12 Texas

Local organisation adverts

£2 per month for a small boxed advert or £7.50 for a full page. Full page adverts are allocated depending on space available and cannot be guaranteed. All monies must be at one of the two drop-off locations (Barter's Plant Centre or Acres Supply Garden Centre) by **4pm** on the **19th** of the month. Please note: no cash, no advert!

Trade advertising

Annual trade advertisements (12 issues, when space is available)

1 space	(69mm wide x 33mm high)	£22.00
2 spaces	(69mm wide x 66mm high)	£42.00
3 spaces	(quarter page - 69mm wide x 100mm high)	£60.00
4 spaces	(138mm wide x 66mm high)	£75.00
6 spaces	(half page - 138mm wide x 100mm high)	£104.00

Trade advertisement material should be supplied in print-ready format, to the chosen standard size and correct shape.

For trade advertising enquiries, please contact David James (Trade advert coordinator/Treasurer) at either thebridge832@gmail.com or 01373 832443.

Darling Interiors

Made to measure Curtains & Blinds • Bedspreads • Tracks & Poles • Fitting • Competitive Pricing

Chosen in the comfort of your own home

Choosing new furnishings has never been simpler. We have an extensive range of exquisite fabrics from leading designers and suppliers to choose from. For the finishing touch, we can provide beautifully crafted tracks and poles from the Bradley range and other leading brands measured to fit different sizes of bay windows and straight windows.

Call today to book your FREE No Obligation Consultation



t: 01373 672 359 e: info@darling-interiors.co.uk w: www.darling-interiors.co.uk

cloud
homecare

Quality care and
support in Warminster
and the surrounding
villages



We are a small, Corsley based care provider

**We provide care to people who need support
to remain living in their own home**

**Please telephone or email us, or visit our
website for further details**

Tel. 01373 832 597 enquiries@cloudhomecare.co.uk
www.cloudhomecare.co.uk

Make plans for your garden this spring...



Turf



£3m²

Topsoil



from £28 tonne

Paving



from £19m²

Sleepers



from £18

01373 832591
www.acressupply.com
info@acressupply.com

Open 7 days a week!

Acres Supply
Corsley
BA12 7PP

FG COLLIER

KITCHENS • BATHROOMS • INTERIORS

WHOLE HOUSE DESIGN & SOLUTIONS



FG COLLIER LTD 29-35 EDWARD STREET WESTBURY WILTSHIRE BA13 3BL
TEL 01373 822227 EMAIL [INFO@FGCOLLIER.COM](mailto:info@fgcollier.com) WEB FGCOLLIER.COM