

The Bridge

June 2017

Monsters &
Dinosaurs
Explorer Trail
10th June
10am - 4pm



Pick some litter, join the evening walk, get quizzical at the pub, sample some coffee mornings, complete YOUR questionnaire, get lively with the ladies(!), there's lots to do in June...



Why Honda?

There's a simple reason why you'll see so many Honda products still hard at work after many years' service – they're built to last!

OFFERS AVAILABLE THROUGHOUT THE YEAR

**Mowers • Tillers • Brush cutters
Blowers • Chainsaws • Hedge trimmers**



GARDEN MACHINERY SPECIALIST

SALES • SERVICES • PARTS

www.mendipmowers.co.uk 01373 832965

Unit 7, Green Farm Industrial Estate, Chapmanslade, BA13 4JJ



Frome Heating Specialists

J L and M W Knight

**Heating and plumbing engineers
specialising in:**

Oil and gas boiler servicing

Boiler replacement

Energy management

Pressurised hot water systems

Underfloor heating systems

Frome family business established 1964

Stavanger, Corsley, Nr Warminster, Wiltshire, BA12 7QL

Call 01373 832578



199876

The Bridge

monthly magazine for the villages of Corsley and Chapmanslade

Articles

Please submit articles either by email to viv.thomas146@btinternet.com or by hand (legible handwriting please!) and take them to the drop-off locations at Barbers Plant Centre, Chapmanslade, or Acres Supply Garden Centre, Corsley by the deadline.

News, reports, updates, thank you's, etc, from individuals or local organisations are free – the more the merrier – keep 'em coming!

File types

Save your files as .doc – please don't send .docx files – I can't always open them successfully.

Advertising

Small ads are £1 for each item whether 'For Sale' or 'Wanted'.

Events/local organisation ads (churches, clubs, playgroups, etc) are £2 per month for a boxed advert.

Full page ads cost £7.50, are subject to space availability and cannot be guaranteed,

If you are advertising, don't forget to take the fee – cash or cheque in a sealed envelope please, to either of the drop-off points (Barbers Plant Centre or Acres Supply).

Please note: no cash, no advert!

Trade advertising

Please see information on the last page.

In this issue...

8 Bob's Bafflers
a cunning quiz

12 Science
biology: changing the world

16 Parish Council briefing
Corsley

Seven Open Doors **23**
news from the pews

Corsley WI **28**
news from the ladies

Parish Council briefing **34**
Chapmanslade

37 News from the Nest
fledgling fun

41 Whitbourne Chapel
chapel colloquy

43 Countryside matters
views from over the hedge

Deadline

**Deadline for articles
or adverts for the next
issue of The Bridge is
4pm 19th June**

**Please note that no
items will be accepted
after this date**

June

Saturday 3rd

Corsley litter pick – 10 am, meet opposite the Royal Oak

Monday 5th

Corsley Parish Council – quarterly meeting – 7.30 pm, Corsley Reading Room

Tuesday 6th

Village Coffee Morning – 10 am - 12 noon, Corsley Reading Room

Thursday 8th

Evening Walk – 7 pm, start at the Royal Oak, Corsley

Ladies' Social Evening – 8 pm onwards, Royal Oak, Corsley

Saturday 10th

Chapmanslade Explorer Trail – 10 am - 4.30 pm

Saturday 11th

Horningsham Village Fayre – 11 am - 4 pm, Horningsham Village Hall

Thursday 15th

Church and Community Coffee Morning – 10 am - 12 noon, Three Horseshoes
Chapmanslade

Chapmanslade Parish Council – 7 pm Chapmanslade Village Hall

Corsley WI – 7.30pm, Corsley Reading Room, Open Meeting, 'Ladies of the Court' by
Andrew Campbell

Sunday 25th

Pub Quiz – 6pm, Cross Keys, Corsley

July

Sunday 2nd

Chapmanslade BBQ – 12 noon, Village Hall

Tuesday 4th

Village Coffee Morning – 10 am - 12 noon, Corsley Reading Room

Wednesday 5th

Corsley WI – outing to Windsor

Thursday 6th

Chapmanslade Parish Council – 7.30 pm, Chapmanslade Village Hall

Thursday 13th

Corsley WI – 7.30 pm, Corsley Reading Room, Open Meeting, 'Juba, Sudan'



*please note new
date and time!*

Diary Dates

Thursday 20th

Church and Community Coffee Morning – 10 am - 12 noon, Three Horseshoes
Chapmanslade

Sunday 30th

Pub Quiz – 6pm, Cross Keys, Corsley

August

Tuesday 1st

Village Coffee Morning – 10 am - 12 noon, Corsley Reading Room

Saturday 5th

Elizabethan Evening presents 'The Mikado', Manor Farm, Corsley

Sunday 6th

Croquet & Cream Teas, Chapmanslade Village Hall

Thursday 10th

Corsley WI – 7.30 pm, Corsley WI Flower, Produce and Handicraft Show

Thursday 17th

Church and Community Coffee Morning – 10 am - 12 noon, Three Horseshoes
Chapmanslade

Sunday 27th

Pub Quiz – 6pm, Cross Keys, Corsley

Bank Holiday Monday 28th

Corsley Show

September

Monday 4th

Corsley Parish Council – quarterly meeting – 7.30 pm, Corsley Reading Room

Tuesday 5th

Village Coffee Morning – 10 am - 12 noon, Corsley Reading Room

Thursday 7th

Chapmanslade Parish Council – 7.30 pm, Chapmanslade Village Hall

Thursday 21st

Church and Community Coffee Morning – 10 am - 12 noon, Three Horseshoes
Chapmanslade

Wednesday 27th

Lite Bites lunch – 12.30 pm, Corsley Reading Room

Chapmanslade Barbecue

**Sunday 2nd July
12 noon**

**Join us for lunch and meet
friends old and new!**

Lots of fun and games!
Kids races
Tug o'war
Egg throwing
Petting goats
Tea and cakes
and
lots more...!

**Let us know if you would
like to help or to run a stall!**

**Contact Denise Page on
01373 832485 for more
information**

Proceeds in aid of Chapmanslade Village Hall

Evening Walk

7pm, Thursday 8th June

A very successful first village walk through the woods with the most stunning bluebells in bloom was enjoyed by all in May. Please join us for our next walk – start from the Royal Oak heading in the direction of Cley Hill via the showfield and back via St Margaret's church. All welcome including well-behaved dogs (on leads please, due to nesting birds)

Allow 1 to 1.5 hours

For further information please contact
Jo Trickett on either:

t. 07866 662126

e. johanna.trickett@gmail.com

Corsley litter pickers

We meet opposite the Royal Oak at 10am on the first Saturday of each month. Our next 'pick' is on Saturday 3rd June – do come along and help keep our village beautiful.

Cath Aylesbury and Sue Taylor

For up-to-date information such as occasional parish council meetings, church services, previous editions of The Bridge, local clubs and activities, business listings, and other useful information, please visit

www.corsleyandthebridge.co.uk

Want something added? Just email the Editor with your request!



Pears Electricians

Nigel Charteris - BSc (Hons) M.I.E.T.



Professional Local Electrician

A HIGH STANDARD OF WORK AT REASONABLE RATES

Part P registered with www.napit.org.uk - Testimonials and references available

Faults & Troubleshooting • Repairs & Improvements
Installation Condition Reports • Boiler Wiring

www.pearselectrical.co.uk

01985 213314 or 07717 534026

*Getting married?
Special occasion?*

Classic 1960 Hillman Minx Estate car for hire

Chauffeur ~ bows ~ flowers ~ champagne

Reasonable rates

Please contact Amanda on

01373 827795 or 07720 673698

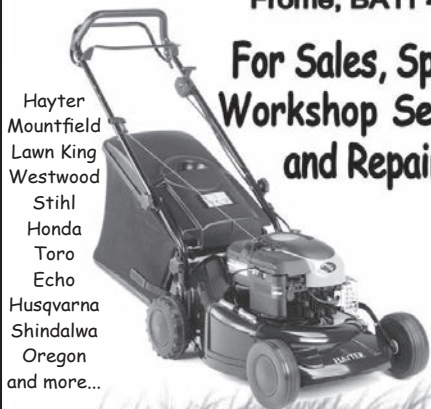


OAKLEY

GARDEN MACHINERY

Grove Lane, Marston Trading Estate

Frome, BA11 4AT



**For Sales, Spares,
Workshop Service
and Repairs**

Hayter
Mountfield
Lawn King
Westwood
Stihl
Honda
Toro
Echo
Husqvarna
Shindalwa
Oregon
and more...

www.oakleyfrome.co.uk

01373 467712

Bride by Design

Bridal gowns and accessories



2 Silver Street
Warminster, BA12 8PS

Please contact us to
arrange an appointment
t. 01985 217216

e. info@BridebyDesign.biz

www.bridebydesign.biz

**STUNNING COASTAL VIEWS ON
CORNISH COAST NEAR LOOE**



Six bedrooms (sleeps 12)

Private access onto beach

Pets allowed

Top class facilities including wi-fi

Rent for week or even long weekend

Downstairs bedroom and shower room

For more info: Sandy Parrish 01373 832522

The **co-operative** funeralcare

- 24 hour service
- Free bereavement advice
- Pre-paid funeral plans

WESTBURY 48 Warminster Road, BA13 3PF
01373 858142

WARMINSTER 3 George Street, BA12 8QA
01985 220105

FROME 1 Nunney Rd, Frome BA11 4LA
01373 473426



Part of The Southern Co-operative

ORCHARD UPHOLSTERY

RE-UPHOLSTERY OF
ANTIQUE AND MODERN
FURNITURE

❖ FREE ESTIMATES ❖

COLLECTION AND
DELIVERY SERVICE

Telephone Lesley
01373 464870

Sharon's Foot Clinic

SAC Dip FHPT SAC Dip FHPP



Fully insured and highly trained

For the professional treatment of:
Corns · Callus · Cracked Heels
Athletes Foot · Fungal Infections
Thickened Nails · In-growing Nails
Diabetic Foot Care · Verrucas
Nail Cutting · Nail Reconstruction

Contact Sharon on
01373 836734 or 07728 200402

Clinic appointments at
12 Sunny Hill, Nunney, BA11 4ND

Home visits also available

Chapmanslade Plan

Plan questionnaire

After a great deal of work and some very generous donations we hope that by the time you read this article the Village Plan Questionnaire will be at the printers and we will be preparing to distribute.

We have a large team of volunteers from the village who will meet just before the Parish Council meeting on 15th June and they will bring the questionnaires to your door during the following week. They will leave a copy for every person in your house aged 11 years or older to complete and will explain how to complete the questionnaire and

answer any questions.

The volunteers will return after a few days to collect the completed questionnaires. We will be ready to help or answer your questions during this time and hope to have all questionnaires in and completed by July 2nd at the village BBQ event.

The Steering Group will analyse all of the responses over the summer and present their findings to the Parish Council and the village so that we can then work towards taking action on the issues that arise.

“Please spend a little time to have your say and help to shape the future of Chapmanslade”

Lorry Watch

The number of lorries travelling illegally through the village has been highlighted by the Lorry Watch being operated in the village; some transport companies have taken action to stop their vehicles breaking the weight limit. Our Parish Council has decided to try to make this an official Lorry Watch so that further action can be taken against offenders.

Mains gas

Gallant efforts to try to arrange for mains gas to be connected to Chapmanslade have not come to fruition this time. Lower oil prices and higher connection costs resulted in the number of villagers

showing interest being too few. This exercise, although fruitless this time, has made us more aware of the processes involved and we feel much more informed should we attempt connection again in the future. Thank you to everyone who helped.

More information about the Chapmanslade plan and initiatives can be found on www.chapmanslade.org.uk or join our mailing list villagers@chapmanslade.org.uk

Ladies' Social Evening

8 pm onwards, Thursday 8th June at the Royal Oak, Corsley

Enjoy an evening with us before the summer break, as we won't be back until September! So come and join us in June, for the next friendly chat and drink!!

Really looking forward to seeing you all there – bring your friends and neighbours!

Jackie Jasper

01373 832301

jackiejasper1@hotmail.co.uk

Debbie Fraser

01373 832527

debbie.fraser123@btinternet.com

Bob's bafflers

- 1 January 28th 2017 was the beginning of the Chinese Year of what?
- 2 What shape is farfalle pasta?
- 3 In which English county is the village of Rock to be found?
- 4 What percentage is half of a half?
- 5 What is the only element from the periodic table, ending with the letter 'L'?
- 6 What is an aglet?
- 7 Which American rocker had his only UK No 1 hit in 1960 with 'Three Steps to Heaven'? He died when the taxi he was travelling in crashed at Rowden Hill, Chippenham?
- 8 Which inventor had the middle name Alva?
- 9 What does a tegestologist collect?
- 10 Part of the Old Bailey is built on the site of which former prison?
- 11 Which TV and film character is associated with the line 'Live long and prosper'?
- 12 In which year were pubs allowed to open all day on Sundays? 1984, 1988, 1992 or 1994

Answers on page 38



Corsley Show 2017

Corsley Show Society Membership

Letters will be sent to all 2016/17 and 2015/16 members during June along with application forms for membership for 2017/18 and tickets.

Where possible these will be sent by email to reduce costs/administration and save them being lost!

An application form will also be printed in the July edition of The Bridge or will be available to download from the Corsley Show website...

www.corsleyshow.org.uk/ticketsales.html

We do hope that as many local people will join as possible as your support to the Show is very important to its future.

*Marion Moldon
(Membership)*

Help required!

Do you have an hour to spare to help out on the entry gates at this year's Corsley Show?

If so, please contact Treeve Moss on either 01373 832132 or email him at gatemanager@corsleyshow.org.uk

Your assistance will be very much appreciated and you will receive **FREE** entry to the Show!

UPVC REPAIRS WILTSHIRE.CO.UK

FOR PROFESSIONAL WINDOW & DOOR REPAIRS

Are you having a problem with your UPVC windows or doors?

- ✓ Misted glass
- ✓ Broken or faulty window hinges
- ✓ Faulty locks
- ✓ Jammed windows or doors
- ✓ UPVC door adjustments
- ✓ Window and door handles

Call us – we are here to help

All work guaranteed

01373 430010 07795 143228 www.upvcrepairswiltshire.co.uk

the three horseshoes

Open daily from 10AM-11PM
serving delicious home cooked food
(12-3, 6-10 Mon-Sat. & all day Sun.)

Enjoy a refreshing drink in our beer garden
with spectacular views of Longleat and Cley Hill,
or indulge with one of our regular meal deals
by the warm open fire on a bitter winter's day.

We organise monthly events,
featuring live music, comedy + much more!

follow us on Facebook for more details



threehorseshoeschapmanslade



BED & BREAKFAST, THE PADDOCK £55 A NIGHT

Situated in Corsley Village, quiet and secluded location.

The accommodation is self-contained and has its own entrance.

Shower room on the ground floor and lovely double bedroom
on the first floor. Breakfast is continental and served at a
table in your room.

Please call Jill & Malcolm Westgate on 01373 832125

To see more details visit

<http://jillianbrunning.wixsite.com/thepaddockcorsley>

YOGA CLASSES

Corsley Reading Room

Tuesdays 7-8.30 pm

Wednesdays 5.30-7 pm

(other classes also available)

Jackie Jasper

01373 832301 yogawithjackiej@gmail.com



**Shake off those pounds and
dance yourself fit.**

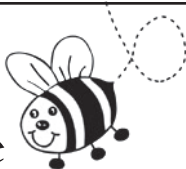
Chapmanslade Village Hall
Monday 7.30pm - 8.30pm

Longbridge Deverill Village Hall
Thursday 7pm - 8pm

For all levels of fitness and
NO experience needed.

For more information please contact
Amy 07830 119032

Busy Bees Pre-School Chapmanslade



For children aged 2-5 years
Weekdays (term time only) from 8 am-5 pm

Please contact Kelly Williams to arrange a
visit and a free trial session for your child

Breakfast club and after-school club available
(term time only)

Telephone 07749 257608
busybeespre-school@hotmail.co.uk

FENCING



Garden Fence Company
Garden fencing supplied and erected

- Repairs to existing fences
- Old fencing removed from site
- Hedges cut
- Small trees felled

For a friendly, cost effective and reliable
service contact Gerald Gasgoigne on:

07506 373335, 01373 822933
info@wessexgardenfencing.co.uk
www.wessexgardenfencing.co.uk

For your
Heating Oil Supplies
contact

KINCH FUELS

at their
local depot in
Devizes, Wiltshire

Telephone 01380 727102

*The company you and
your home will warm to*



LUXURY PRIVATE CAR HIRE

A locally based, door-to-door, personal
service for up to six passengers in
air conditioned comfort

AIRPORTS • SEAPORTS • ANYWHERE

For bookings, please call
01985 840088 07903 307734

WEST COUNTRY SWEEP

Domestic & Commercial Chimney Services

Andrew Leigh

07545 822109

westcountrysweep@gmail.com





Downlands TREE SURGERY

For Expert Tree Care

Telephone Jon Burgess on

01985 214320

Skilled pruning

Tree felling

Stump removal

Qualified and insured

**Free tree health
survey and quotes**

Keep active with physiotherapy

Alison Rossiter MCSP HPC

Chartered Physiotherapist

30 years experience in physiotherapy specialising in the treatment of muscle and joint problems.

Helping people to improve their health and fitness through treatment, exercise and advice.

Home visits can be arranged.

Daytime and evening appointments available.

If you need help please contact:

Beckington Physiotherapy 01373 831483

Email: arossiterphysio@gmail.com

www.beckingtonphysio.co.uk

DAVID EDMUNDS & CO
ACCOUNTANTS & TAX CONSULTANTS

Specialists in the self-employed, small and medium business and self assessment.

Preparation of accounts, VAT, PAYE, income tax and corporation tax returns.

Personal, friendly service

Evening appointments by arrangement

Telephone 01225 334447

Home 01373 832430

**TREVOR
& JON** *by Amy*

Unisex Hair Salon

Unit 2 Stone Mill, Trowbridge BA14 8BU

01225 754001

trevorandjonbyamy@outlook.com

Kevin O'Mahony
Quality Painter and Decorator

Internal and external painting

Artexing

Wallpapering

Coving

Hand painted kitchen units

07724 349447 or 01985 301197

email kevo7743@googlemail.com

www.thewarminsterpainter.co.uk

Biology: changing the world

How do you tell if one thing causes another?

A few months ago I wrote an article in *The Bridge* on “Correlation and causation” and pointed out that correlation does not imply causation through the ridiculous example of the divorce rate in the state of Maine correlating with consumption of margarine. Unless a large number of married couples fell out over using margarine rather than butter, these two things were highly unlikely to be related.

This led a reader to ask me how you determine whether something is causative or not. As a scientist, I would use statistical analysis to decide whether there is a relationship between two factors, such as the consumption

of fatty foods and obesity. Are the trends the same? What are the chances of a person who eats a lot of fatty food being slim? How many fat people don't eat fatty foods? There is no direct cause and effect, because obesity depends on things other than simply diet, although diet is a major contributor. Without statistical analysis you cannot draw definite conclusions about the effects of diet.

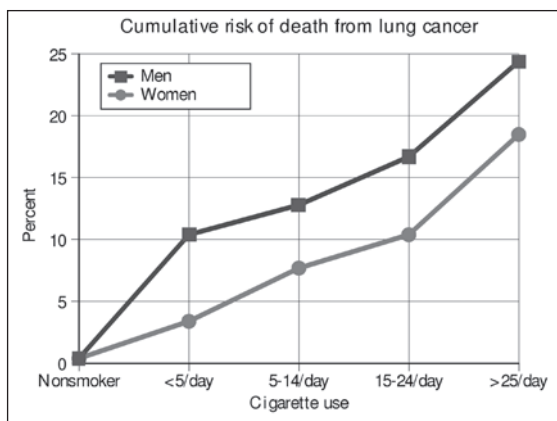
Probably one of the first such statistical correlations to have a huge international impact was that between smoking cigarettes and lung cancer. This was first done in the 1950s, when smoking was much more common than it is today.

Of course, dealing with causation in human studies is difficult. You need to compare different groups of people so that other variations are cancelled out. In the case of

cigarettes and lung cancer, ideally the group of cancer-sufferers studied would have to be matched by a group of people not having lung cancer who had the same range of eating and drinking habits, the same exposure to different environments and the same range of other illnesses. If

you then found that there were many more smokers in the cancer sufferers, you may suggest that smoking causes lung cancer.

In fact, Richard Doll's studies in the 1950s were dramatic. He initially showed that of 649 lung cancer patients, only two were non-smokers, and Doll immediately gave up his modest habit of five cigarettes a day. His



subsequent studies of much larger numbers of people, including 56,000 smoking and non-smoking doctors, established the link firmly and were statistically robust.

In some cases you need to do experiments. For example, you cannot expose people to a new drug before safety tests have been performed. So these are usually done with laboratory animals. Here it is easy to match two groups which are treated identically in every respect, apart from the drug. The effect of the drug on the animals can then be determined. Only when it is proved both

safe and effective does it go for human trials. Some cosmetic companies pride themselves that their products have not been tested on animals. I am sorry, but I would rather they were first tested on animals and not on my daughters!

Nigel Brown is happy to receive comments, questions and suggestions for future articles at nigelbrown48@gmail.com

church news

Ring the changes with...

Campanology News

Maz announces some fantastic news – in an internal rhyming poem...



This month I've such good news for us, we've reached our target without fuss.
From very little at the start a gift last month has played its part.
To Norridge Farm the Meins come; they have it as their second home.
We've rung to celebrate the birth of their three children on this earth.

The Easter Service was their aim and all together duly came.
They listened to the bells so loud and chatted after with the crowd.
They only stay for a short while as Austria's their domicile.
Before they went I got a call 'We've left some money for you all'.

With this to add to what we've got and the May Fayre to join the pot
We placed the order straight away. It's in the schedule, no delay.
In Jan or Feb it will be done, six weeks or so the work will run.
No bells to ring during this time but when they're done they'll be sublime.

We are so blessed to have such friends, the help we've had just never ends.
For such support we thank you true. Our bells will sound to show we do!

Marion Moldon
01373 832 672

ALLSOP CARPETS & FLOORING

DOMESTIC ♦ COMMERCIAL ♦ INDUSTRIAL

Christchurch Street West, Frome BA11 1EB

TEL: 01373 463866 MOBILE: 07887 953014

www.allsopcarpets.co.uk

Chapmanslade Village Hall

Can be hired for all your functions:
parties, weddings, meetings, classes, etc

For hiring information, phone
Ken Davies 01373 832034 or email
chapmansladehall@blueyonder.co.uk

Traditional Mole Catcher

07512 681111

01373 836350



KEYVOLUTION

Locksmith and
Carpentry Services
serving the Wiltshire Area

Warminster based company offering locksmith and carpentry.
Police cleared, reliable and honest service.
Any other quote beaten.

- BS3621 lock upgrades for house insurance approval
- Garage doors, locks and running gear
- Lock repairs – specialising in Chubb mortice locks
- Upvc double-glazed door and window locks fitted – even old ones!
- Door or window locks opened destructively or non-destructively (indemnity required for these services)
- Digital code locks supplied and fitted
- All types of carpentry work – mostly 2nd fix and maintenance

Check out my website

www.keyvolution.co.uk



or call Ben on 07748 214799 or 01985 219799

Hypnotherapy for you!

Solution Focused Hypnotherapy is a safe, practical
therapy and can help you to:

- Feel better about yourself
- Achieve work, play, lifestyle balance
- Improve many areas of your life

Fiona 07801 436633

fiona@balancehypnotherapy.co.uk

www.balancehypnotherapy.co.uk

Balance
Hypnotherapy
Solution Focused Hypnotherapy

White Horse Windows

Windows, Doors, Conservatories and
more...

Local Company, Exceptional Standards
10 year guarantee

Windows Fascia & Guttering
Doors Conservatories

CERTASS Registered

For a Free Quotation call Ryan on
07909 441442 or 01373 302594



nickcranston@acertreesurgeons.co.uk

www.acertreesurgeons.co.uk

01373 832026 or 07590 986261

85 High Street, Chapmanslade

- FREE advice and quotes from a friendly, professional and accredited company fully insured and Council approved
- We are highly skilled and qualified to undertake all tree work from fruit tree pruning to technical dismantling of huge tree structures near buildings as well as hedge trimming and care.
- We also sell logs!

BARTERS PLANT CENTRE

'Passionate about Plants'

Shrubs ♦ Perennials ♦ Trees ♦ Roses ♦ Conifers
Climbers ♦ Fruit Trees ♦ Hedging ♦ Soft Fruit ♦ Seeds
Bulbs ♦ Basket Plants ♦ Bedding ♦ Vegetable Plants
Christmas Trees ♦ Holly Wreaths
National Garden Gift Tokens



Opening Hours

Mon to Sat	9 - 5	(March to October)
Mon to Sat	9 - 4.30	(November to February)
Sun	10 - 4	(March to June + December)

Just off A36 in Chapmanslade, Wilts, BA13 4AL
01373 832694 www.barters.co.uk



JONATHAN CORP

Painter and Decorator
General House Maintenance
Sturford Mead Farm, Corsley
Warminster, Wiltshire, BA12 7QU
01373 832213

Postlebury News R Gould – Newsagent

All papers and magazines
Home delivery service

01749 850556 07979 452677

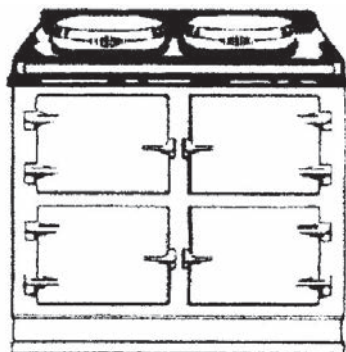


T A P Services

Telephone 01373 463106

tapservices@btinternet.com

Authorised Stanley Service Agent
Oil Range Cooker & Oil Boiler Servicing



Range Cooker Servicing

Corsley Parish Council

Parish Council Briefing

Neil Britten, Chairman, rounds up the activities of the PC in May

One meeting was held in May, the Annual Parish Council meeting, whose main purpose is to elect the Chair and Vice Chair for the forthcoming year and confirm the specific areas of responsibility or expertise offered by individual members. Briefings on regular items were also tabled.

Elections

Parish Council – As indicated in the May brief and on public noticeboards, there were exactly nine nominations for nine seats and all those nominated were therefore deemed to have been elected. The list is included below, with the agreed responsibilities. The PC was pleased to welcome John Fairgrieve as a new Councillor.

Chair/Vice Chair – There was one nomination each for Chair and Vice Chair, Neil BRITTEN and Judith HELLIAR respectively, and both were unanimously elected.

List of Councillors and responsibilities

Neil Britten Chair, Little Cuckoos Liaison

Judith Helliard Vice Chair, Corsley & Chapmanslade PCC Liaison (Corsley) Parochial Charities Trustee

Olly Hares Memorial Playing Field Committee Liaison; Old School Playing Field maintenance

Simon Jasper Streetscene

Gill Parkinson Footpaths; Reading Rooms Committee liaison

John White Thynne Trust representative; Corsley Parochial Charities Trustee

Steve Meyer Planning and building matters

Mike Butler Finance and Business matters

John Fairgrieve Without portfolio

Note that all Parish Councillors are also Trustees of the Len White Memorial Fund, a registered charity which exists for the benefit of Corsley children between the ages of 5 and 11 for educational needs as the Trustees think fit.

Streetscene

The current priorities have been agreed with the Parish Steward:

- Clear drain and cut-through at Dertford Wood Corner.
- Strim grass at Corsley Heath Bus Shelter triangle, Temple triangle and Sturford Lane/A362 verge
- Check and clear drains and grips in the area of Court Lane flooding:
- Pavement weedkilling at Birchwood Close and clearance of blocked drain outside No. 20
- Gutter tidying outside St Margaret's Church

The next Community Area Transport Group (CATG) will be held on 15th June, to be

attended by Simon, who will represent the following issues:

- Alternative Longleat entrance; pursuit of two Area Board issues already discussed covering speed limits, enforcement of one way at Whitbourne Springs, blind summit signage at Long Hedge.
- New issue, also Longleat related, forwarded to the Area Board. Application for a “no entry sign for Longleat” at the A362/Fuzzy Lane junction.

Old School Playing Field (OSPF)

The Memorial Playing Field Committee has now kindly arranged insurance and training so that a team of volunteers can take over mowing duties at the OSPF. The volunteers include PC members, Neil Carpenter, Malcolm Holley and John Helliard and their efforts will save the PC approximately £600 per annum in maintenance costs.

To assist with this plan and to make the OSPF more accessible, a new entrance will be created at the eastern end of the car park, adjacent to the Old School, with a full-sized gate, to allow vehicular access, and an adjacent pedestrian gate for public access.

Bay Tree Close

This topic has been well covered in recent Bridge briefs, but it was felt by the PC that some further information might be helpful to explain the way in which the new bungalows at Bay Tree will be allocated, bearing in mind that they come under the category of ‘social housing’ whose tenants will be selected according to the rules of Wiltshire’s housing register. The PC has no direct influence over this register, but can ensure that the best information is available to potential tenants, particularly those with a Parish connection. The information below is a précis of publicly available matter.

Social housing in Wiltshire is managed by a partnership of Wiltshire Council and Housing Associations, under the banner of “Homes4Wiltshire” (H4W) and it is this organisation which should be approached by anyone wishing to understand the details of the availability of housing and how the housing register works and influences allocation. H4W operates a “choice based letting scheme” which covers a wide range of affordable homes, as well as those directly owned by the Council, through a bidding process against weekly advertised lists. However, H4W stresses that demand considerably exceeds supply and a banding system is used to categorise the needs of those on the list, band 1 being the most urgent, band 4 the least.

Wiltshire’s housing allocation claims to rate connections to Parishes as a key factor in prioritising bids from housing applicants using H4W and in the success of securing a new home. An applicant with a Parish connection to the Parish in which a property is located has a greater priority over one who has not, when bidding for a property, even if the latter person is in a higher band. It should be noted that a “parish connection” includes employment and close relative’s residency.

The housing Register is the list of people in housing need under the Wiltshire’s Allocation Policy. It is a document which has legal force and is was altered in 2015 to place more emphasis on local parish connections in consideration of bids which are ranked thus:

- 1 Local connection to the Parish where the property is advertised (and then by band and date of placement in the band)
- 2 Local connection to an adjacent Parish
- 3 Local connection to Parish(es) elsewhere in Wiltshire.

continued on page 19



Clean-it

Recommended by



Carpet and upholstery cleaning specialist

01373 462059 07779 247961 www.clean-it.biz

Home ~ Private ~ Lettings

Garston
Veterinary Group

Pleased to meet you

...as long as your kennel cough vaccination is up to date!

Symptoms include a loud hacking cough, sneezing and nasal discharge through to larger infections and in some cases pneumonia.

You can help to protect your dog with regular kennel cough vaccinations

To help we are offering a 25% discount on Kennel Cough vaccinations for May and June.

For full details please contact your nearest Garston Vet Surgery

Frome	Melksham	Trowbridge	Warminster	Westbury
01373 452225	01225 617779	01225 754021	01985 213350	01373 301448



www.garstonvets.co.uk



Domestic Appliance Sales and Repair Service

Domesticare

21 Keyford, Frome

www.domesticarefrome.co.uk



01373 467351

Childminder

Ofsted registered

Full and part time. Before and after school
Holiday spaces available

Pick-up and drop-off offered

Call 01373 832854 or 07883 025476
d.m.rawlings@outlook.com

JERRY RAYNER :
boiler maintenance :

01985 841461 or 07775 755981

FOR SERVICING AND BREAKDOWN
OF OIL BOILERS
also AGA and RAYBURN

- Competitive rates
- Friendly, helpful and efficient
- Call now for a quote



**STONE &
BRICKWORK
SPECIALISTS**

Tel: 07970 513233

Email: terry@rocketmasonry.co.uk

www.rocketmasonry.co.uk



Longleat Forestry

For all your timber needs, including:

- Firewood logs • Woodchip • Mulch •
- Rustic poles • Coal • Kindling • Saw logs •
- Hardwood • Softwood • Christmas trees •

5% discount for tenants of Longleat Estate

Tel: 01985 213507 Email: forestry@longleat.co.uk

Web: longleat.co.uk/about/forestry

Picket Post, Warminster, BA12 7JS

An applicant will thus have a better prospect of re-housing if available to provide evidence of Parish connections and this may be accepted if the applicant, joint or singly:

- 1 Is employed in the Parish
- 2 Has been resident in the Parish for three of the previous five years
- 3 Is currently resident in the Parish or has lived there for at least six months or
- 4 Has close family who are currently resident and have been resident for more than the last five years.

It should be noted that the PC has no authority in respect of the way in which decisions are made in the allocation of social housing and no specific expertise. The notes above have been taken from the H4W web site and are verbatim copies of key parts of the publicly available information. It should also be noted that there are financial rules relating to applicants for a place on the housing register, which, for example, are severely limiting on the amount of capital which an applicant may hold. Existing owner occupiers do not qualify.

The contact details for H4W are 0300 456 0104 or by post at Homes4Wiltshire, County Hall, Bythesea Road, Trowbridge, Wiltshire BA14 8JN

The planning application for Bay Tree has now been approved and the PC will keep in contact with Wiltshire and make public any information it receives about the likely availability timescales for the Bay Tree bungalows.

Neighbourhood Watch

Corsley is currently without a Neighbourhood Watch Coordinator and a volunteer is sought for this extremely valuable and important voluntary role. The major object of the task is to act as a link between the village and the local Police to ensure that our security and crime concerns

are fully represented in the appropriate places and to receive information for dissemination to the village. The Neighbourhood Watch scheme is regarded as one of the major success stories of the last 20 years or so in combating local crime.

In an ideal world the coordinator would set up a team covering the various hamlets in the village to ensure that the best local vigilance is maintained and specific concerns are properly represented. It does not require any sort of 'vigilante' mentality or putting oneself at risk on the streets, rather encouragement and communication to help vulnerable individuals to keep as safe as possible.

If there is anyone out there who would like to know more, particularly some idea of the likely commitment required, then please let me know.

Future meetings 2017

Quarterly meeting

Monday 5th June at 7.30 pm

Three planning applications will be discussed at this meeting:

17/03495/FUL Harrowmint House – extension

17/03923/FUL Center Parcs – erection of shelter and a storage shed

17/04145/FUL Mews Cottage, 2 Knapps Gate – Single/ two storey extensions

Quarterly meeting

Monday 4th September, 7.30 pm

Quarterly meeting

Monday 4th December, 7.30 pm

There may be occasional meetings at short notice; please watch the village notice-boards.

Neil Britten (Chairman)
01373 832515/07810 764714
neil.britten@btinternet.com

Division F

Children's Classes⁴ - Open

Kindly sponsored by Barters Plant Centre

Got little ones under 5 to amuse over the summer holidays? Why not get them to enter Class 95 – a little cuckoo shape! Let their imaginations run wild – collect stuff from the garden, pasta, seeds and other dried goods from the larder, or go wild with paints, crayons, finger-painting – get involved and have some real fun, quality time with the kids!

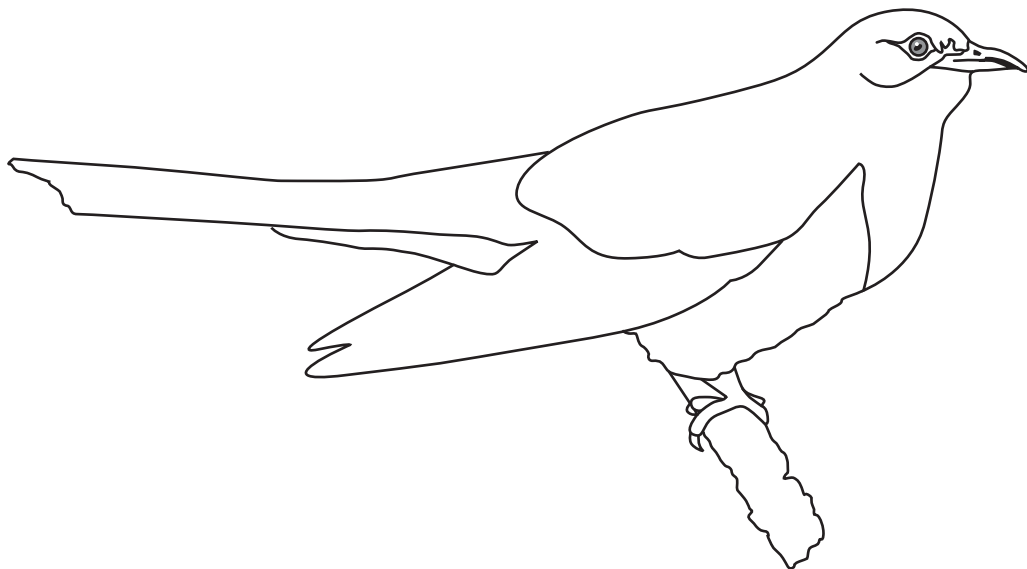
Aged under 5 on the day of the Show

Class 95 A 'little cuckoo' shape

decorated with leaves, seeds and other natural material. Shape can be downloaded from the Corsley Show and The Bridge websites.

Max size A4.

New for 2017



Enlarge the picture using a photocopier/printer (maximum width to be A4/30cm) and get colouring! You could make a collage with things you can find in the garden or the larder – always get mum/dad or your carer to help you though!

CHAPMANSLADE MONSTERS & DINOSAURS EXPLORER TRAIL

SAT JUNE 10th 10am - 4.30pm

Explorer Activities, Raffle, Food, Games and more!

Your £4 per family Explorer Pack includes entry into a free prize draw for every completed Explorer form. The two trails start and finish at the Village Hall, where there's Explorer Activities, a fantastic raffle, and lots more. You could even book a special yummy Explorer themed lunch at our very own The Three Horseshoes pub!

Choose **Trail 1**: A 2km wheelchair, pushchair, and dog friendly village street walk.

Or enjoy **Trail 2**: A 3km dog friendly walk through our streets, woods, and countryside.

Why not book in for a special lunch at the Three Horseshoes along the way, Explorer themed! For every explorer kid's meal sold on the day, the pub is kindly donating £2 to us, so please help by supporting this!!

Two courses for £7.95

Ham and cheese Dino pizza, or

Veggie Dino pasta, or

Toad in the hole with mash and gravy

Ice cream and dino cookie

Volunteers

We are looking for volunteers to help on the day although we also want everyone to enjoy the event so we're just looking for an hour of your time.

Raffle

We have had some amazing support from local businesses donating raffle prizes: the top prize £150 in cash, we have a Sofa, £50 Voucher Three horseshoes pub and lots more!!!

Competition

Would you like to join in the fun and make a monster or dinosaur for the event? Minimum height 75cm which will be displayed on the day at one of the stop-off points along the trail. There is a prize for the best one, chosen by people on the trail.

Or, if you would like to get involved but would like to do something a little smaller, maybe you could make a dinosaur egg, dinosaur bones, or a dinosaur foot... We will show these at the village hall or, if you live on the High Street, pop it in your garden so everyone walking the trail can see it!

Let's make it a fantastic day!

For more info see the Chapmanslade website www.chapmanslade.org.uk

If you would like to contact us about any of above please email us at explorertrail@chapmanslade.org.uk

Proceeds will go to the school, church and village initiatives



24hr Domestic or Commercial
Emergency Entry
Lock Repair or Replacement
Duplicate Keys Cut

Is your Home Insurance valid?

Are your possessions at risk?

*If your locks are not insurance
approved, the answer might shock you.*

For a no obligation inspection:

01373 470171 or 07713 903983

phil@locallocksmith.org.uk

www.locallocksmith.org.uk

DBS Checked and uniformed

Cross Keys

Community Free House

Lyes Green, Corsley, BA12 7PB

Open all day!

Bar

Food

Monday to Saturday

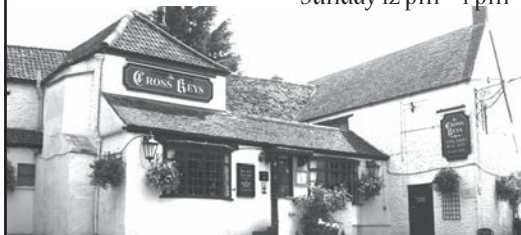
11 am - 11 pm

Sunday 11 am - 10 pm

Monday to Saturday

12 pm - 2.30 pm and
6 pm - 9 pm

Sunday 12 pm - 4 pm



01373 832406

www.crosskeyscorsley.co.uk

Facebook @CrossKeysInnCorsley

Corsley Tennis Club



New members welcome –
all ages, all abilities

Three hard courts available all year

Weekly junior coaching available

Low subscriptions

Contact either

Emma Fox 07512 009580

Sue Newell 01373 825560

www.corsley-tennis.uk

Little Cuckoo's Pre-School

Lyes Green, Corsley, BA12 7QH

Friendly, dedicated pre-school in the heart of the
countryside for children aged 2-5 years

Monday, Wednesday, Thursday and Friday
9 am - 3 pm during term-times

We accept 2-year-old funding in
accordance with Wiltshire Council guidelines

Mother and Toddler group Tuesday mornings
10 am - 11.30 am during term-times

SESSIONS AVAILABLE NOW

Speak to Hayley McMahon

Pre-School Manager on 01373 832298

Find us on facebook or visit www.littlecuckoos.co.uk

A free trial session is available

Registered Charity Number 1064800



CHRIS SEVIOUR
Building Services

07894 708949

cmseviour@gmail.com

Roofing, Loft conversions,
Extensions, Plastering,
Natural stonework



S B Services



Contact Sean

07828 671566

*For your garden maintenance
and home improvements*

Seven Open Doors

Dear Friends,

The last few weeks have been unrelentingly dry with dire warnings of drought; it's been lovely for those of us who share our lives with furry companions, as there has been a lull in the business of washing paws and clearing up muddy imprints all over the floor and often the walls too. Today the tide has turned and the rain is pouring down, so back to bedraggled fur and soggy towels. Wanting to do the best for my erstwhile companions I recently purchased two towelling coats to help with the drying process; it was Betty's birthday earlier in the month so she had a magenta pink one, and Alf, of course had to have one too, a smart red one.

All of us want to do the best we can to look after those we love and most of us also want what's best for our local community; we work hard to try to provide the best possible environment for our children and grandchildren to grow up, and at the other end of the spectrum, for the care and wellbeing of elderly and frail family members.

On June 8th we will have to make a decision about which political party we think will best lead our country and that decision will of course be influenced by our own context, our own needs, and our own place in wider society. It hardly needs saying that desire to promote that which is best for our own needs should not be the only driver in the decision making process.

I don't think General Elections feature in the biblical canon, but we can learn much from looking at how those ancient peoples organised themselves as a community. The ancient Israelites were fiercely tribal; they had a profound sense of self-identity as the people of God and it was heinous crime to take a wife outside their community. Their lives were often short and brutal with much fighting and bloodshed. And yet, running through the biblical stories is the golden thread of justice, and not, extraordinarily, just for members of their own tribe. Again and again God exhorts them to look after the stranger and the alien, the widow and the impoverished, the poor and the destitute.

Mahatma Gandhi said: "A nation's greatness is measured by how it treats its weakest members." And I seem to remember Jesus saying a thing or two about loving our neighbour and caring for those less fortunate than ourselves. So when we come to vote on June 8th let us have the courage to look beyond our own narrow self interest and think about the needs of those who struggle in our society.

I leave you with a quote from a prayer attributed to St Francis of Assisi: "Lord, make me an instrument of Your peace. Where there is hatred let me sow love; where there is injury, pardon; where there is doubt, faith; where there is despair, hope; where there is darkness, light; where there is sadness, joy."

Love and prayers,

Pauline

June Church Diary

Sunday 4th June: Pentecost

8 am at St Mary the Virgin, Kingston Deverill: 1662 BCP Communion
9.30 am at St Margaret of Antioch, Corsley: Eucharist
10.30 am at St Peter & St Paul's, Longbridge Deverill: Morning Worship



Tuesday 6th June

7.30 pm at the Anchorage, Corsley
After Alpha Home Group - details from Richard on 832594



Saturday 10th June

Chapmanslade Explorer Day
Further details from Ian 832318 or Phil 832845



Sunday 11th June: Trinity Sunday

9.30 am at St Philip & St James', Chapmanslade: Family Communion
10.30 am at St Mary the Virgin, Kingston Deverill: Eucharist
11 am at St Mary's, Temple, Corsley: Matins



Monday 12th June

10.30 am at 116 High Street, Chapmanslade
Time to Think Home Group - details from Phil on 832845



Thursday 15th June

10 am to 12 pm at the Three Horseshoes, Chapmanslade
Church & Community Coffee Morning



Sunday 18th June: Trinity 1

9 am at St Mary's, Temple, Corsley: 1662 BCP Holy Communion
10.30 am at St Michael the Archangel, Brixton Deverill: Eucharist
10.30 am at St Margaret of Antioch, Corsley: Family Worship

Tuesday 20th June

7.30 pm at

After Alpha Home Group - details from Richard on 832594



Sunday 25th June: Trinity 2

9.30 am at St Philip & St James, Chapmanslade: Eucharist

10.30 am at St John the Baptist, Horningsham: Patronal Eucharist



Monday 26th June

10.30 am at 5 Brimhill Rise, Chapmanslade

Time to Think Home Group - details from Phil on 832845



Sunday 2nd July: Trinity 3

8 am at St Michael the Archangel, Brixton Deverill: 1662 BCP Communion

9.30 am at St Margaret of Antioch, Corsley: Eucharist

10.30 am at St Peter & St Paul's, Longbridge Deverill: Morning Worship

Fundraising

Our May Fayre was held on Saturday 20th May at Manor Farm, Corsley. As predicted the weather was mixed but the heavy showers did not dampen spirits. The cream teas were busy all afternoon with the other stalls offering a mixture of raffle, cakes, plants, cards, jewellery, books, crafts and other items. There were various activities for children. As well as running a bric-a-brac stall the bellringers were ringing the bells on the hour. Later this year we hope to have the bells overhauled. The twice yearly 50/50 Club draw was held with ten prizes ranging from £200 to £25!

We raised just over £1,200 for our church funds. Our thanks to Claire and Chris da Costa who allowed us to use their garden and barn.

Welcome, Congratulations & Farewell

We welcome into our church family Michael Brindley Stratton baptised at Kingston Deverill on 14th May; and Edward Timothy Francis Coffey baptised at Horningsham on 15th May.

Congratulations to Rachel Vowles and John Campbell who were married at Longbridge Deverill on 6th May

The funeral of Robin Greenwood took place at Longbridge Deverill on 19th May. The funeral of Elizabeth Harris also took place at Longbridge Deverill on 26th May. We offer our prayers and sympathy to both families.

Explorer Day

An exciting event will take place in Chapmanslade on Saturday 10th June when everyone will be invited to look for monsters and dinosaurs on a choice of explorer trails through the village. This is a fundraising event to raise funds for Chapmanslade School's Parent Teachers and Friends' Association, Corsley and Chapmanslade Churches and Chapmanslade's Village Voice initiative. Our school, of course, serves both villages so everyone from Corsley and Chapmanslade is invited to participate.

There will be a free raffle for everyone who purchases an explorer pack, with monster prizes and explorer activities will take place at the village hall and at St Philip and St James' Church. The Three Horseshoes will be offering special explorer-themed lunches.

We are looking for volunteers at this community event who can offer an hour to help with marshalling, to bake cakes, or to help at the church serving teas and coffees or helping with children's activities. Please contact Ian Buick or Phil Jefferson with offers of help or for more details.

Rural Dean	Rev Pauline Reid revpauline@btinternet.com	01985 841290
Lay Pastoral Assistants	Richard Dean Barbara Hughes Claire Tanner	01373 832594 01373 832273 01985 218099
Pastoral Visitor	Alan Hopkinson	01373 832393
Churchwarden	John Helliar	01373 832803
Deputy Churchwardens		
St Margaret's	Judith Helliar	01373 832803
St Mary's	Harcourt Gough	01373 832039
St Philip & St James'	Janet Aylesbury	01373 832752
PCC Secretary	Phil Jefferson	01373 832845
PCC Minute Secretary	Sue Fear	01373 832074
PCC Treasurer	Keith Muston	01373 832755
Planned Giving Officer	Judith Helliar	01373 832803
Choir Leaders	Marion Muston Claire Tanner	01373 832755 01985 218099
Benefice Administrator and Safeguarding Officer	Marion Muston cleyhillchurches@gmail.com	01373 839026 01373 832755

Copy for Seven Open Doors should be sent to Keith Muston at
themustons@btinternet.com subject 7ODs or phone 01373 832755.

If you would like to receive weekly news of Church events and activities, please send your email address to the above, with subject 'Through the Open Doors' or download a pdf from the 'churches' pages at www.corsleyandthebridge.co.uk



*Individually tailored holidays
for the very best in African travel*

J&C Voyageurs organises individually tailored African holidays for those looking for something special, memorable and away from the crowds. We will incorporate your distinct wishes and aspirations, with no detail overlooked, so that you are able to relax completely.

We have a passion for Africa and conservation of its wildlife, peoples and incomparable scenery. With over 20 years' experience exploring Africa and putting outstanding African holidays together, we can discuss hundreds of safari lodges, camps, beaches and city hotels with first-hand knowledge.

Telephone 01373 832111

Email mail@jandcvoyageurs.com

www.jandcvoyageurs.com

Registered Osteopath

Philip Sefton D.O.

'Treatment from head to toe'

Over 20 years' experience of treating back, neck, shoulder, muscular and joint pain

Manor Road · Marston Estate · Frome · BA11 4BN
01373 455993 www.phillseftonosteopath.co.uk

Ski Apartment – French Alps

Ski in/ski out – sleeps 6

Well equipped – immaculate condition

For more information or to book online visit:

w. www.ski-les-cimes.co.uk

f. facebook.com/ski.les.cimes

e. lesleygolledge@gmail.com

t. 01373 832533

npv plumbing & heating

Installation • Servicing • Repairs

Bathroom and tiling specialists

All plumbing and heating work undertaken

Our fully qualified plumbers offer all general plumbing services from boilers to bathrooms. We will gladly advise clients on the most suitable products for their property – be it heating systems, boilers, radiators, bathrooms or showers.

07738 940355

www.plumbersfrome.co.uk

Hypnotherapy

If you need help with:

Anxiety

Depression

Phobias (such as flying or spiders)

Panic attacks

Relaxation

Weight management

Smoking cessation

Natural childbirth

Confidence

Public speaking

Exam nerves

and much, much more...

Call ANJI HOLLAND on
07944 647 978 / 01373 832 898
to enquire or just for a chat

www.hollandhypnotherapy.com

With practices in Chapmanslade and Bath

I am a member of the National Council for Hypnotherapists
and am bound by their code of practice and ethics

Corsley WI



May news

Carol Seward rounds up the May meeting and announces some forthcoming events

At the May meeting of Corsley WI, a busy evening began with the usual business matters and was then followed by a discussion of the two resolutions to be put forward to the NFWI AGM in June. Charlotte Beswick explained the first resolution on Alleviating Loneliness. Members thought it could be rather difficult getting involved with this and were not sure of the best way that the WI could help, other than providing opportunities for people to meet if they wished, such as with the village coffee mornings. Jean White then told us about Plastic Soup, the contamination of the oceans created by the microplastic fibres being shed from synthetic clothing with every wash. Members agreed with the resolution to ask the Government to research and develop solutions to the problem.

Maureen Hinton then gave a demonstration of Flowers For All Occasions and showed us how to create several beautiful arrangements. Liz Irving gave the vote of thanks.

The Bring and Buy plant stall was very popular and the competition for 'my favourite mug' was well supported with an amazing collection brought in by members.

The Wiltshire Federation has organised a Big Band Evening at Chippenham, a Scandinavia Day at Market Lavington and also a Treasure Trail in Warminster for September. Full details are available at our next meeting.

The annual outing is to Windsor on Wednesday 5th July, with an early start! There only one or two places left so please ring Carol Seward on 01373 832446 if you wish to come.

Due to the General Election, the Reading Room is being used for voting on 8th June, so the WI meeting will now be held on **Thursday 15th June** at 7.30pm in Corsley Reading Room. This is an open meeting so everyone is welcome to come and hear the talk by Andrew Campbell about loyalty and intrigue and the ladies in Napoleon's entourage after Waterloo, entitled 'Ladies of the Court'. The competition for members is for a fan.

We are looking for new members of all ages, so for a warm welcome and a nice cup of tea, just come and visit us at any of our meetings, held on the second Thursday of the month in the Reading Room at Corsley. The exact times are mentioned in this monthly WI meeting report and also in The Bridge Diary Dates or ring Carol Seward on 01373 832446 for information.

Would you like to learn Bridge? Beginners are very welcome and anyone over 18 can come. Or maybe you are interested in visiting gardens or would like to join us for lunch once a month? These events are not just for WI members. If you would like further details please contact Pauline Scott on 01985 215760, as the venues vary each month.



Registered Charity Number: 1064800

Little Cuckoos Pre-School is recruiting for a new Chairperson to lead its Management Committee

Would you like to:

- Work as a part of a team of volunteers?
- Have a real say in how a local pre-school is run?
- Help organise and host fundraising events?
- Meet other parents/carers and make new friends?
- Gain fantastic experience and put your own skills to good use?

The role is full of variety, offering the right candidate the opportunity to get involved in everything from staff recruitment and fundraising projects, to setting the monthly committee meeting agenda and coordinating roles in any plans that are made.

Starting from September 2017, this role would be ideal for a parent, retired person, or anyone with some extra time on their hands who would like to make a valuable difference to this thriving pre-school in Corsley.

If you are interested in supporting us in our mission to improve the education and development of our children, we would be delighted to hear from you.

**For further details of this position, please contact Little Cuckoos at
littlecuckoos@hotmail.co.uk or call 01373 832298**

Chapmanslade Motor Services

**Vehicle repair
and servicing**

**Brake
specialist**

**MOT preparation
and repairs**



**Batteries
Exhausts
Tyres**



Quality service at competitive rates

FREE ~ wheel balancing and tracking with new tyres

FREE ~ courtesy car

Electronic diagnostics available – most makes covered

Green Farm Industrial Estate, Chapmanslade

01373 832188 or 07711 256927



**01373
455911**

CLEANING & MAINTENANCE 2000 LTD

OUR SERVICES INCLUDE

- Domestic Cleaning
- Commercial Cleaning
- Upholstery Cleaning
 - Carpet Cleaning
- One off Spring Cleans
- Garden Maintenance
 - Home & Garden Clearance

f www.busybees2000.co.uk **t**
info@busybees2000.co.uk

JOHN E S JONES

**GENERAL
BUILDER**



Carpentry, painting and
decorating, extensions, uPVC,
facias and gutters, fencing,
decking and patios

Also general repairs

Telephone 01373 832600

Mobile 07074 832600

Garden guide

Tips for a new gardener

Rob White recommends some simple tips to get gardening!

Most people who are just starting out or have moved into a new garden feel pressured to do the whole garden at one time. I persuade most of my customers to stage the design and build. This is great for beginners and I would suggest they concentrate on getting the area around the house finished first. Not only will this give you an area that you can enjoy relatively quickly but it also means you can budget for the entire garden.

Cover the soil with ground cover plants

One of the biggest problems newcomers to gardening find is maintenance – the last thing you want to do is spend all of your down time looking after a garden. Plan ahead, think about covering every centimetre of your soil with plants – choose ground cover plants and place them in-between larger shrubs and don't be afraid to plant annuals, these will suppress any unwanted weed growth.

Buy quick growing plants

Plants take time to grow and whether you have grown from seed or cuttings a garden full of tiny new plants can be demoralising at the best of times – choose plants which grow fast and that will give you a great show in your first season. Try clump forming

we're in the garden...

perennials such as Asters and grasses – buy plants that can easily be split to make several plants for the price of one.

Use natives wherever possible

Native plants offer a failsafe answer to many new gardeners. Native plants have adapted over the years to most climatic and soil changes therefore make the most easily to look after plants. Choose Hazel and Birch for fast instant structure. Native plants are generally much cheaper than their hybrid alternatives so keep a look out in the garden centre

Vegetables & Herbs

Vegetables can be extremely rewarding to the first time gardener and also offer you a chance to understand how plants grow and what they need to survive. Picking and eating your own produce also helps you bond with your garden and there is nothing quite so relaxing as returning home from a hard day's work to water the vegetables and harvest a crop.

Remember to enjoy your garden and love the plot you've got!

Rob White

Acres Supply Garden centre, Corsley

TEA & sympathy

Considerate catering at a difficult time

All our food is homemade, we provide delicious teas, sandwiches and cakes through to more elaborate options.

We offer a truly bespoke, caring and professional service.



Telephone Kim Clark on 01373 832151 or 07843 056916

e-mail kim@teaandsympathy.uk.com

www.teaandsympathy.uk.com

CHANTRY CONSTRUCTION

stone walling • patios

drives • extensions

prompt reliable service

mini digger and driver for hire

01373 836787 07855 343388

COMPUTER & LAPTOP REPAIRS
UPGRADES / SYSTEMS & LAPTOPS

VIRUS REMOVAL / BROADBAND
WIRELESS / NETWORKING



FAST, FRIENDLY, PROFESSIONAL SERVICE
COMPETITIVE RATES
ONSITE OR WORKSHOP

CCO CompTIA
A+ Certified

call
01373 302901

www.ntscomputing.co.uk
help@ntscomputing.co.uk

LAPTOP REPAIRS

We also replace
laptop screens,
keyboards,
CD-DVD drives,
fix overheating
and more

Forget-me-not

• GARDENING SERVICE •



Weeding, pruning, planting,
fence painting, etc

01373 464416

07890 850465

Do you need a plumber? Call...



Paul Antell Plumbing

07890 366832

01373 467427

Professional, reliable, friendly and local
paulantellplumbing@talktalk.net
www.paulantellplumbing.co.uk



www.darchoil.com

BOILER SERVICING & REPAIR

**All our technicians are
OFTEC registered and approved**

Call us on **01935 473302** for an instant quote or visit www.darchoil.com, fill out the form and one of our team will call you back during office hours

- Boiler servicing on-demand or as part of a Contract Service Agreement
- Servicing of oil, commercial and domestic boilers undertaken
- Group discounts available on request – call us for information

Call us on **01935 473302** or email **info@darchoil.co.uk** for more information

EVERGREEN GARDEN SERVICES

Garden maintenance and landscaping, lawns, strimming, hedging, pruning long and short term maintenance, patios fencing, turf and seeding.

Over 20 years experience in horticulture, landscaping and estate management.

Contact Ben Hale

01373 825495

07879 492283



Rose Knight



Dog and cat
minding service

01373 464904

07773 435254

knight_rosemary@sky.com



Computer
problems?

PC and Apple repairs

Virus removal

iPad repairs

Tuition



Frometech

01373

470170

www.frometech.co.uk

James, Rob and Adam former Employees of
ROGER PATCH LIMITED
Are pleased to introduce:-

CMP COMPLETE LIMITED

GENERAL BUILDERS

19 Swaledale Road, Warminster, BA12 8FH

Contact James: 07801 868288

Email: cmpcompleteltd@gmail.com

Chapmanslade Parish Council

Parish Council Briefing

Keith Muston reports on the parish council's May meeting

The meeting on the 18th of May was the first meeting of the parish council following the local council elections. Sadly we did not need an election as we did not have enough nominations to require an election. Importantly we welcome John Foster and Charlie Thackway to the parish council. We do have one vacancy and if you might be interested in joining the parish council please do contact either myself or our clerk, Minnie House. Phil Jefferson did not stand for re-election and at the meeting I was nominated and appointed as Chairman.

A brief synopsis of our meeting.

Lorry Watch

We have effectively run an unofficial Lorry Watch for some time. Our village has an 18t weight limit but this does not deter some drivers of vehicles exceeding this limit. We resolved to make enquiries about making our Lorry Watch "official" and to establish if this would provide benefits for our village.

Weight restriction

This led into a discussion about the signage from the A36 at Dead Maids. We have previously had contact with Highways England and we resolved to pursue the issue of advance warning of the 18t weight limit through Chapmanslade.

Speeding

There are now 14 members of the village

Speed Watch team who stand for two weeks in every month reminding drivers of the 30mph speed limit, and logging and reporting to Wiltshire Police those that travel in excess of the limit. Traffic figures peak at over 500 vehicles an hour in the village during busy periods and the figures for the last year show that the Speed Watch team logs about 1% for speeding. In March 2017, 33 vehicles were logged of which 26 received letters from the Police. Two new sites have been approved giving the team more options to monitor throughout the village, but success rides on having sufficient volunteers to man the sites as often as possible; new volunteers are always welcome.

Village Plan

Adam Oakley gave a progress report to the meeting. The next major development will be the distribution of a questionnaire to every person over age 11 in the village. Distribution is scheduled to take place in mid-June with a return date of early July. Please do take part in this exercise so that we can discover the issues that are important to our village.

Sienna's Valley

The enforcement notice required a number of remedial works to be undertaken. It is the view of the parish council that the requirements of the enforcement notice have

not been complied with. It was resolved that we continue to pursue this issue with the Enforcement Office for Wiltshire Council.

Planning Application

There was only one application before the council. This was for the re-development of 158 High Street with the existing bungalow being replaced with a three bedroomed house. There were no objections and we will respond accordingly to Wiltshire Council.

Highways

I reported that the Parish Steward is working well and effectively provides regular housekeeping. Some works are outside the scope of the Parish Steward and we will need to continue to request visits from the gully-emptying vehicle.

Neighbourhood Watch

Can I remind you that we are approaching the time of year when seasonal 'visitors' come to our area and, historically, petty theft, especially from garden sheds, increases. Please ensure that your shed and gardens are as secure as they can be. Remember to report any crime by ringing 101. A Neighbourhood Watch coordinator is still required for Brimhill Rise; contact Phil Holihead if you would like to know more.

Defibrillator

The defibrillator was needed a few weeks ago but the response from the paramedics was so quick that the machine was not actually used. It is a great reassurance that the machine is available in an emergency. Our thanks to the team that makes regular checks to ensure that the machine is functioning correctly

Keith Muston
01373 832755
themustons@btinternet.com

Thank you!

A huge and very sincere THANK YOU to everyone who bought raffle tickets from me to help raise funds for my summer musical theatre project.

The raffle has now been drawn and the three prize winners have received their prizes. The winning tickets were:

Ticket 100 (Corsley)
Ticket 70 (Chapmanslade)
Ticket 180 (Frome)

Congratulations to all three winners!

After attending national auditions back in January, I was so thrilled to be cast in Youth Music Theatre's production of *Jabberwocky*, which will be performed at the Theatre Royal Margate, 17th to 20th August. This is such an incredible opportunity and I will get professional training and a qualification at the end of it.

I am so very grateful for all the help and encouragement that I have received. Thank you to everyone in my community for your donations and interest so that I can realise my dream. I just can't wait to start rehearsing in the summer!

In the meantime, I'm rehearsing for *Seussical Jr* at the Athenaeum in Warminster which is being performed 1st to 3rd June. If you're looking for something fun and very child-friendly to do during half term, come and say hello!

Anabella Fairgrieve (aged 15)
Birchwood Close
Corsley

HORNINGSHAM VILLAGE FAYRE

Sunday 11th June 2017

11am - 4pm

FREE
ENTRY

Village FAYRE

FUN FOR ALL THE FAMILY

WIN
A HOT AIR
BALLOON
FLIGHT



FUN DOG SHOW
& ARENA
EVENTS

CRAFT
STALLS

CREAM
TEAS

GAMES
&
FUN

INCLUDING: Free Parking, Plants & Cakes,
Bric-a-Brac, Kids Zone, Classic Cars,
Traction Engines, Entertainment, Arena,
Great Food, Ice-cream, Tombola, Raffle
Prizes, Face Painting, Games & Plank Race

More Info: chb.bristol@gmail.com

call/text 07779 121228

Village Hall, Water Lane, Horningsham, Wiltshire BA12 7LL

 [horningshamvillagefayre](https://www.facebook.com/horningshamvillagefayre)



News from the Nest

Welcome to this month's news from
Corsley Cuckoo's PreSchool in Lyes Green, Corsley.

During May we have been enjoying the sunshine, having lots of fun in our fabulous outdoor space. This month we are all looking forward to our annual summer trip. This year we are off to Charlie's Farm where we will be feeding and handling the animals, enjoying tractor rides and having an ice cream!

We recently invited parents and guardians to a Question and Answer Session to demonstrate what goes on during a typical day at Cuckoos and what the children have been learning and experiencing. These sessions are a really important opportunity for parents and Cuckoos staff to share information.



our new sandpit!

We absolutely love our all-weather sandpit – it was made for us just in time for the great British summertime! 'Thank you' to Adam Young (parent and our own Cuckoo's handyman).

Term-time opening hours: Monday, Wednesday, Thursday and Friday 9 am - 3 pm

Term-time Mother and toddler group: Tuesday 10 am - 11.30 am

For more information, please contact us on 01373 832298

www.littlecuckoos@hotmail.co.uk

Your Local Electrical and Property Services

Call or email now for a free quote

01373 464577

enquiries@lawrencefairfield.co.uk

**LAWRENCE
FAIRFIELD**
Limited

www.lawrencefairfield.co.uk



Jackdaw Plastering



Phone : 07504977650

Email : andy@jackdawplastering.com

Web : www.jackdawplastering.com

***Qualified *Insured *Clean *Reliable**



Cross Keys News

**Corsley's very own community-owned
free house**

Spring has been a busy time at The Cross Keys Corsley with an Easter Egg Treasure Hunt, a pub quiz and support for local sports teams and choir.

We will continue to hold a Quiz Night on the last Sunday of each month, starting at 6pm; a maximum of five people per team at a cost £1 per person. Book your place for Sunday 25th June. From June onwards, we could provide a light supper for a slightly higher entry fee, please let us know if you'd like this.

Sara is continuing to produce lovely meals at reasonable prices; Jason is returning to the kitchen of the Cross Keys and, between them, there will be a speedier service and regular theme nights. Please check our website and Facebook page for details. The team are also introducing new specials and a selection of West Country cheeses for cheeseboards and Ploughman's. Smaller portions are always available for children and those with lighter appetites.

The summer opening hours have been extended, so the pub is now open until 10pm on Sunday evenings – a perfect opportunity to enjoy a drink at the end of the weekend. Rob has recently added a range

of outstanding fruit ciders from Lilley's in Frome. Well worth sampling!

The one-year anniversary of the pub opening as a community Free House will be celebrated on Saturday 10th June with a BBQ buffet and the grand unveiling at 2pm of the new pub sign. More details can be found on our website and Facebook page.

Opening hours

Monday to Saturday 11am to 11pm

Sunday 11am to 10pm

Food served

Monday to Saturday 12 noon to 2.30pm
and 6pm to 9pm

Sunday from 12 noon to 4pm

For forthcoming events and news visit the website www.crosskeyscorsley.co.uk or our Facebook page @crosskeysinnorsley. Alternatively, contact the pub on 01373 832406 to book a table. We look forward to seeing you soon!

Answers to Bob's Bafflers

- 1 Rooster
- 2 Bow tie or butterfly
- 3 Cornwall
- 4 25%
- 5 Nickel
- 6 The metal or plastic tag at the end of a shoelace
- 7 Eddie Cochran
- 8 Thomas Edison
- 9 Beer mats
- 10 Newgate
- 11 Mr Spock
- 12 1988 and I'm off to the pub now that I've finished this quiz to collect some No 9s!

'Tis on August the 5th you should look to the east dear friends...

...where, tsunami-like, a veritable panoply of actors from the Illyria Outdoor Theatre company will descend upon Manor Farm, Corsley to give an outstanding performance of...

The Mikado

The inhabitants of Titpu will be making an appearance on the verdant lawns of Manor Farm Corsley on Saturday 5th August



We have again been extremely fortunate to retain Illyria's services again to perform this mystical marvel of the East. This is the most popular of Gilbert & Sullivan's works, so get your ticket requests in quick as this is going to sell out fast.

Great cuisine inspired by the kitchens of Grandmaster Jules, warm and friendly companionship and a setting *par excellence* is just waiting for your patronage for the most anticipated event in the West Wiltshire theatrical calendar.

The Inn of the Six Pleasures will be open to all, serving traditional English liquids and possibly some sake to boot. So join the host in your fundoshi and kimonos on the tatami.

Messrs Parchment & Quill, fresh from entertaining the noble heads (legs, arms and ears too) of England and the Corsley Concubine Chorus (aka the Foreplayers), will have undoubtedly compiled some excoriating piece of entertainment to start the proceedings.

Auditions for the Concubine Chorus are being held behind the Barn in Stoney Field each Wednesday 7-8pm – please bring your own blanket and 'JointEase' cream.

The mysterious mistress of the ticketline, Claire, is just waiting for your calls for ticket and supper sales, so if the BT cocoa tins and strings are working, she can be contacted on 01373 832113.

If cocoa tins are inoperative, heliographs, or flag signals are being received at 15 minutes past the hour (daylight hours only)

Regards

'No Tongues Maggee'

Your 'umble scribe, being of uncertain parentage and multiple personalities, wishes it to be known that he is generally of the male construction, but occasionally takes on the female persona. So any resemblances to persons living or dead is purely coincidental, as they say at the movies.

Steve Dayman-Johns

Driving Instructor

Condensed Courses and
Gift Vouchers available

Tel 01373 865422 - Mob 07730 445648

email stevekdj@gmail.com

JMW ACCOUNTING

Cost-effective, no-nonsense, efficient accounting, bookkeeping, VAT, payroll and CIS solutions for sole traders and Limited Companies.

Self-assessment and taxation services also available.

- ▶ Fixed fees agreed in advance
- ▶ Free initial consultation
- ▶ Westbury office with free parking

Contact Jackie Welch

01373 822363 or **07790 325321**

jackie@jmwaccounting.co.uk

www.jmwaccounting.co.uk

M W Garden Services

20+ years experience

A tailor made service for all types of garden maintenance

Insured and CBI's checked

mark22.weaver@mypostoffice.co.uk

Telephone 01373 832854

Mobile 07921 818452

Piano Lessons

All standards welcome

Debbie Rickhuss

Teacher of Pianoforte and Theory

Contact 01373 832829

07747 499990

rickhuss@tiscali.co.uk

Dashing Dusters

- Cleaning and ironing to a high standard
- General domestic assistance
- Commercial cleaning
- Reliable
- Reasonable rates
- References available

01373 832484 (evenings)

Hardwood logs for sale

(cut to size if required)

FREE DELIVERY

R M Log Supplies

Beckington

Call Robin on

07876 621929

Whitbourne Chapel

*And God saw every thing that he had made... and it was very good.
Genesis 1:31*

The beauty of the earth

Spring is my favourite season. Seeing flowers after barren winter and watching beauty adorn the earth anew, is thrilling for me. Does it excite you, too?

My granddaughter Jess and I went to Kew Gardens in April and walked the extensive grounds. I was like a happy child viewing the bluebells and flowering azaleas. There's a large woodland lake in the grounds; a heron stood on the shore, despite the crowds watching it. I took a photo of a robin, so close I saw his feathers moving in the breeze. We saw ducks and geese, plus a coot; Jess had never seen a coot's weird-shaped grey feet before!

Two days later, I walked beside Priddy Pool near Cheddar, where the land's scarred by lead mine remains. I photographed cows, sheep and a lovely field of dandelions! Well, I think they're lovely, anyway!

I also met two photographers with 'proper' cameras and there, nestled in the long grass nearby, was an adder. I only had pocket-sized cameras with me, but a gentleman used one to get me a close-up of the adder, while I took fuzzy shots with the other, of the adder escaping us, by swimming a ditch of

water and climbing up the far bank. How wonderful is God's design of everything in our world, for a creature without legs, feet or fins, to swim in water and climb a bank. Unbelievable!

Garden of Eden

"Would you like a veggie burger
With some salad for your lunch?
We could add sun-dried tomatoes
And a walnut for some crunch.
The choice here is amazing
And very healthy, too,"
Said Eve to darling Adam
As they both admired the view.

Then sin came in and all went black:
From Paradise they were forced out,
To dig and sweat, thistles galore,
To cope with toil and flu and gout.
Meagre compensation
As their lifestyle sadly dips –
Roast beef and Yorkshire pudding
And sausages and chips.

by RH

*Gill Redman
01985 215062*

email paradiselost@btinternet.com

Regular times

Services every Sunday morning at 11.00 for about an hour (coffee served at 10.45)

Chapel Prayer meeting every Sunday morning from 10.20 - 10.40

Communion on the first Sunday of each month at 12 noon for 15 minutes

Bible study sessions – as announced.



COMPUTER PROBLEMS?

01373 812804

Email
Advice for new users
Anti-virus defence
Web sites
Custom programming

Networks - home & office
Home tuition
Web access
Privacy & security
Repairs

www.technojeeves.com

info@technojeeves.com

No Job Too Small



Local Electrician

Part "P" registered NAPIT approved
Domestic and Commercial Work Undertaken
Third Party Testing

Call for a Free no obligation Quotation

Tel: 01749 850769

Mobile: 07779 429786

email:

iain@fushi-electrical.co.uk

www.fushi-electrical.co.uk



E G MARTIN LTD Heating Oil Distributors

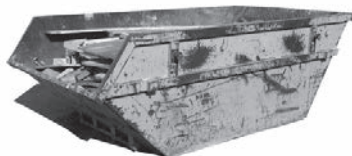
Telephone 01373 822784

Victory Road, West Wiltshire Trading Estate
Westbury, Wiltshire, BA13 4JL

WESTERN SKIP HIRE

Telephone 01373 865247

Victory Road, West Wiltshire Trading Estate
Westbury, Wiltshire, BA13 4JL



Windows, Doors & Conservatories

- Free quotes from our local experts
- Strengthen your home's security
- Reduce your heating bills
- Excellent offers

up to
45% OFF
selected
WINDOWS & DOORS

01985 215566
www.newwindowsltd.co.uk

New
Windows



Tales from the passenger seat

I recently spent a month in California and thought I would share some of the differences in driving and regulations that I observed.

Driving tests are, on paper, strict, but in reality if you can go round the block for about seven minutes or so and not actually hit anything, you get a licence.

Stop signs are considered to be suggestions...you are meant to, but no-one does. Indicators are for wimps. So swapping lanes and overtaking in any lane on freeways, with no signals, often for no reason, is a happy pastime.

Speed restriction signs are everywhere, but are also considered to be a 'suggestion' Everyone speeds, and unless you are doing a ridiculous speed when it is [say] busy at school time, the police don't bother stopping anyone. Using mobile phones whilst driving is illegal, but everyone does, including the police. The unwritten rule is – don't get in an accident whilst using one.

Where I was staying it seemed to be OK to drive badly, even directly in front of, or passing, a police car. The federal police don't come out that far – they prefer to patrol the more troublesome areas. My hotel was just outside the jurisdiction of the local county police, so even if they saw dangerous driving, they were not legally able to do anything about it, so they ignore it!

If you happen to have the misfortune of actually being stopped and give a decent enough excuse, a warning is usually the result as the police dislike the paperwork involved if reporting a traffic offence. If the officer decides to issue a ticket, he has to attend court on the due day. If he doesn't show up the case is dismissed. If he does show

up and you give a decent excuse, the case is often dismissed. If you appeal five times before going to court, your case doesn't get to court because it all happened too long ago and would be discarded. If, on the very rare occasion your case actually gets to court, again, if the police officer doesn't turn up/ forgot – case dismissed!

Many drivers remove their front number plate because having one doesn't help the car 'look cool'...

If you happen to trigger one of the rare speed cameras, as long as your face is not visible there's no case to answer because there's no proof it was you driving the car. You will not be asked who might have been driving your car.

Many drivers don't bother with insurance and because of this, those that do bother with it have to pay an extra premium to cover being hit by an uninsured driver! If you get stopped and asked to produce your documents, as long as you say 'It's in the post', you are let off, since the police know there is a tremendous backlog of many driving documents. Nothing is followed up.

There are no MOT's, so bald tyres, bad brakes, etc., are only a problem if you are in an accident and it can be proved that your car's unroadworthy condition was a contributory factor. If not, then there's no problem.

Phew! Thank goodness I was in an affluent area where all the cars were new!

Steve Dayman-Johns

TOENAIL CUTTING REFLEXOLOGY

IN YOUR OWN HOME

ALICE LEWIS

Telephone 01373 229335

NEED HELP WITH YOUR GARDEN?

Hedge cutting • Lawn mowing
Strimming • General gardening

Call Rob Clements

Tel 01373 832683 Mob 07586 337118

Wren House

Residence for the retired and elderly

Wren House in Warminster is a long-established, elegant retirement home, specialising in individual care in gracious surroundings. Having just thirteen rooms, each with a private bathroom, we are able to offer the ambience of a family home, together with caring staff and the facilities to enable our residents to enjoy their later years with dignity.

Wren House serves fresh, locally-sourced, home-cooked food. Residents enjoy a varied activity programme which includes a gardening club and our own choir.

Mrs Ellie Simmonds

Wren House Ltd, 32 Vicarage Street, Warminster, BA12 8JF

Telephone 01985 212578

wrenhousewarminster@hotmail.com

www.wrenhousewarminster.co.uk

ST DAVIDS WHITSAND BAY CORNWALL



Holiday Let
Sleeps up to 8
01373 464870

www.stdavidswhitsand.co.uk



Karina

Mobile Hairdresser

Tel. 01373 832823

Mob. 07742 690337

Paul Ledbury

Quality Painting and Decorating

30 years experience

INTERIOR AND EXTERIOR
GENERAL MAINTENANCE

5 Hampshire Gardens

Westbury, Wiltshire

BA13 3EX

Telephone 01373 858163

Mobile 07976 242045

CLARION

electrical

Part P registered & guaranteed



Making household electrical circuits work safely

clarionelectrical@btinternet.com

01985 216641 07766 355237

*Fifteen
years in
the trade*

RICHARD ROBBINS

City and Guilds Trained Gardener

All aspects of Garden work undertaken

07510 130083

Black Dog Farm Bed & Breakfast



You will find a friendly welcome and a hearty breakfast in our listed Georgian Farmhouse. The quality en-suite bedrooms contain everything you need to ensure a comfortable stay.

Lyn and Fraser Mills

01373 832858 or 07878 954563

Black Dog Farm, Chapmanslade,
Wiltshire, BA13 4AE

www.blackdogfarm.co.uk

Allsorts of Fencing

Peter Allsop

allsortsoffencing.co.uk

All types of domestic and agricultural
fencing supplied and erected

Also:

- Decking and patios
- Sheds, pergolas and archways
- Topping of fields and paddocks

Allsorts-of-fencing@hotmail.co.uk

01373 832339

07710 180551

anatomy clinic

*chiropody, holistics,
massage, beauty*

28 East Street
Warminster
BA12 9BN



t. 01985 219122

e. info@anatomyclinic.co.uk

w. anatomyclinic.co.uk



Like us on Facebook



KB Landscape

30 years in landscaping

Phone

01373 832371

Mobile

07951 297173

Kevin Brixey - for quality and experience

5 Red Cottages Corsley Warminster Wiltshire BA12 7PS

Landscaping
Patios and paths
Turving and seeding
Brick and stone walling
Decking and pergolas
Block paving
Gravel drives
Pond work
Fencing

A view from over the hedge...

Countryside Matters

If the oak is out before the ash there will be a splash

If the ash is out before the oak we will have a soak

An old country saying, forecasting the possible annual rainfall and from my observations the oak was certainly out first this year – we wait to see if it is an old wife's tale or not!

Spring has certainly been incredibly dry with just .22 inches of rain in April – thankfully we'd had 2 inches of rain by 18th of May.

Silage crops in early May were light and for a short while the cows were given extra rations of food to keep them satisfied and milking well.

Winter-grown cereals are looking good and the maize sown about 10 days ago is already 2 inches high!

The sheep have settled back with their lambs after the shearing. The lambs are no longer able to smell that familiar smell or benefit from the warmth of their mother's woolly coat on a cold windy day, but the removal of all that weight of wool is a relief for the sheep and any blow flies can be detected before they cause infections. Thankfully, a hungry lamb will call with its own distinctive bleat and ewes and lambs will quickly reunite.

Around the 24th of April, an early riser in the village heard a cuckoo calling for a mate! It was thought that it may have been just passing through, but it has been heard several times in the last month, so we may be hosting a pair. Listen out as it is a very

distinctive call; the adult bird will leave the UK in July, expecting other birds to raise their young.

The woodlands have been a real show with bluebells gradually giving way to white garlic. Soon, the foxgloves will come into their own with their cerise spires brightening the mossy woodland floor, just as the bright green canopy of beech, oak and ash create a cover for young deer, pheasant and other woodland birds.

Dogs and horses should be checked regularly and carefully for ticks which can be picked up from long grasses. They will also attach themselves to humans, so do wear long trousers and protective socks and boots whilst out walking.

For those who don't mind rising early in the morning, the dawn chorus is a joy to be heard. If you can't be tempted outside into our lovely countryside so early in the day, just open your bedroom window and .

Judith Helliar

Tick Engorged tick



Image courtesy of
www.lymediseaseaction.org.uk

Corsley Reading Room

Your 'village hall'

Chairman, Hugh Deed, reports on the latest happenings at the hall

Cinema Corsley's last showing of the season was very well attended and was the highly acclaimed 'A United Kingdom'. The team responsible are to be congratulated for an excellent spring programme and we look forward to more! As previously announced we have been awarded our own movie projection kit by the British Film Institute. Their Neighbourhood Cinema project has agreed to provide equipment. Films for the autumn will be announced in due course.

A few modifications are being made to the exit (to the bar area) from the main hall. The changes will enable us to easily wheel items from the main hall into the storage cupboard and move the steps into the bar area making the exit safer, especially in emergencies. We are also modifying the storage cupboard to make the space more usable. We hope this work will be completed during June.

The rates charged for the use of the hall are aimed to be very competitive and reflect the facilities used: main hall, lower room,

kitchen as well as duration of booking, etc. We cannot therefore publish a standard rate.

Users/hirers are requested to leave the facility as they found it and ensure they report any problems back to a committee member. While we do employ a cleaner on a regular basis, the day-to-day maintenance and replenishment falls to the volunteer committee, so your cooperation in this respect is appreciated.

The committee is always interested to hear ideas about uses for the hall and welcomes enquiries.

If you would be interested in joining the committee please let me or Jenny Rutty know, or talk to any member. Full details about the hall and its facilities including how to hire are on the website or call Gill Parkinson to discuss. See website www.corsleyreadingroom.org.uk

Hugh Deed

Chairman of Management Committee
chairman@corsleyreadingroom.org.uk or
 01373 832897

.....

Events run by the Corsley Reading Room Management Committee

Coffee Morning:

First Tuesday of the month 10 am - 12 noon

IT Classes/Club:

Wednesday 7th June 10 am - 12 noon

Corsley Cinema

Autumn dates to be announced

Regular events run by other organisations

Lite Bites Lunches: *third Wednesday of the month at 12.30 pm*

Yoga: *Tuesday and Wednesday evenings*

Pilates: *Tuesday afternoons*

Committee members include: Vanessa Hyde, Jackie Jasper, Sue Kerfoot, Gill Parkinson, Jenny Rutty, Jill Westgate, David Carruthers.

Small ads

£1 for EACH item for sale or wanted (cash only please) - at one of the two drop-off locations)

Please note: no cash, no advert!

BABY SITTER

Mature, responsible 14 year-old (nearly 15!) girl available for **baby sitting** in Corsley/Chapmanslade area. Contact **Shannon Trickett** on **07866 662126**

FOR SALE

24' girl's bike in good condition – £40
07866 662126

FOR SALE

Next - girl's white metal-framed **single bed** with wooden slatted base with pretty heart detail – £40
07866 662126

FOR SALE

Two **folding sun-loungers** complete with cushions – £15 each (will separate)
01373 832815

FOR SALE

Rise and fall light, complete with white opaque glass shade – £10 **01373 832815**

FOR SALE

Tienshan (Harmony) **18-piece tea set** – never used – £50 **01373 832530**
or **07720 673698**

FOR SALE

Princess Diana **collector's plate** with stand – perfect condition – £25 **01373 832530**
or **07720 673698**

Local organisation adverts

£2.00 per month for a small boxed advert or £7.50 for a full page. Full page adverts are allocated depending on space available and cannot be guaranteed. All monies must be at one of the two drop-off locations (Barter's Plant Centre or Acres Supply Garden Centre) by **4pm** on the **19th** of the month. Please note: no cash, no advert!

Trade advertising

Annual trade advertisements (12 issues, when space is available)

1 space	(69mm wide x 33mm high)	£22.00
2 spaces	(69mm wide x 66mm high)	£42.00
3 spaces	(quarter page - 69mm wide x 100mm high)	£60.00
4 spaces	(138mm wide x 66mm high)	£75.00
6 spaces	(half page - 138mm wide x 100mm high)	£104.00

Trade advertisement material should be supplied in print-ready format, to the chosen standard size and correct shape.

For trade advertising enquiries, please contact David James (Trade advert coordinator/Treasurer) at either thebridge832@gmail.com or 01373 832443.

Darling Interiors

Made to measure Curtains & Blinds • Bedspreads • Tracks & Poles • Fitting • Competitive Pricing

Chosen in the comfort of your own home

Choosing new furnishings has never been simpler. We have an extensive range of exquisite fabrics from leading designers and suppliers to choose from. For the finishing touch, we can provide beautifully crafted tracks and poles from the Bradley range and other leading brands measured to fit different sizes of bay windows and straight windows.

Call today to book your FREE No Obligation Consultation



t: 01373 672 359 e: info@darling-interiors.co.uk w: www.darling-interiors.co.uk

cloud
homecare

Quality care and
support in Warminster
and the surrounding
villages



We are a small, Corsley based care provider

**We provide care to people who need support
to remain living in their own home**

**Please telephone or email us, or visit our
website for further details**

Tel. 01373 832 597 enquiries@cloudhomecare.co.uk
www.cloudhomecare.co.uk

Make plans for your garden this spring...



Turf



£3m²

Topsoil



from **£28 tonne**

Paving



from **£19m²**

Sleepers



from **£18**

01373 832591
www.acressupply.com
info@acressupply.com

Open 7 days a week!

Acres Supply
Corsley
BA12 7PP

FG COLLIER

KITCHENS • BATHROOMS • INTERIORS

WHOLE HOUSE DESIGN & SOLUTIONS



FG COLLIER LTD 29-35 EDWARD STREET WESTBURY WILTSHIRE BA13 3BL
TEL 01373 822227 EMAIL [INFO@FGCOLLIER.COM](mailto:info@fgcollier.com) WEB FGCOLLIER.COM