

The Bridge

July 2022

monthly magazine for the villages
of Corsley and Chapmanslade



Celebrate American Independence Day, join the WI talk on gemstones, celebrate Chapmanslade Primary School's 150th birthday, go to a Bring & Buy Sale, enjoy some coffee mornings, there's lots to do in July...



Acer Tree Surgeons Ltd are Wiltshire based, and approved by the Arboricultural Association. Our team are all NPTC qualified and first aid trained and proof of insurance is sent out with every quote

Tree removal – dismantling and felling

Crown reductions, re-shaping and pruning

Hedge cutting

Stump grinding

Qualified surveys and management of trees

Free no-obligation quotations and health check

Contact Nick or Roy on 07590 986261 or 01373 832026

royderham@acertreesurgeons.co.uk

www.acertreesurgeons.co.uk

The Old Post Office, 85 High Street, Chapmanslade, BA13 4AN



Frome Heating Specialists

J L and M W Knight

**Heating and plumbing engineers
specialising in:**

Oil and gas boiler servicing

Boiler replacement

Energy management

Pressurised hot water systems

Underfloor heating systems

Frome family business established 1964

Stavanger, Corsley, Nr Warminster, Wiltshire, BA12 7QL

Call 01373 832578



199876

The Bridge

monthly magazine for the villages of Corsley and Chapmanslade

Articles

Please submit articles either by email to **paradisefound86@icloud.com** or by hand (legible handwriting please!) and take them to the drop-off locations at Barters Plant Centre, Chapmanslade, or Acres Supply Garden Centre, Corsley by the deadline.

News, reports, updates, thank you's, etc, from individuals or local organisations are free – the more the merrier – keep 'em coming!

File types

Save your files as .doc – please don't send .docx files – I can't always open them successfully.

Advertising:

Small ads are £1 for each item whether 'For Sale' or 'Wanted'.

Events/local organisation ads

(churches, clubs, playgroups, etc) are £2 per month for a boxed advert.

Full page ads cost £7.50, are subject to space availability and cannot be guaranteed,

If you are advertising, don't forget to take the fee – cash or cheque in a sealed envelope please, to either of the drop-off points (Barters Plant Centre or Acres Supply).

Please note: no cash, no advert!

Trade advertising

Please see information on the last page.

In this issue...

8 Bob's Bafflers
a cunning quiz

12 Chapmanslade Village Hall
hall happenings

19 Six Open Doors
news from the pews

Tennis Club **24**
from over the net

Corsley WI **26**
news from the ladies

Parish Council briefing **27**
Chapmanslade

32 Wonderful Walks
glorious Gloucestershire

35 Whitbourne Chapel
chapel colloquy

38 Countryside matters
views from over the hedge

Deadline

**Deadline for articles
or adverts for the next
issue of The Bridge is
4pm 19th July**

**Please note that no
items will be accepted
after this date**

July

Saturday 2nd

American Independence Day Celebration and
Corsley House Open Garden – 6 pm to 10.30 pm, Corsley House

Monday 4th

Corsley Parish Council Bi-monthly Meeting – 7 pm, Corsley Reading Room

Tuesday 5th

Coffee Morning – 10 am - 12 noon, Corsley Reading Room

Thursday 14th

Corsley WI - Rachel Boothroyd from Cooper & Tanner talk on 'Gemstones' – 7.30 pm,
Corsley Reading Room

Friday 15th

Chapmanslade Primary School's 150th Birthday – 2-6 pm, at the School

Thursday 21st

Church and Community Coffee Morning – 10 am to 12 noon, Three Horseshoes,
Chapmanslade

Saturday 30th

Bring & Buy Sale – 10 am to 12 noon, Chapmanslade Village Hall

August

Tuesday 2nd

Coffee Morning – 10 am - 12 noon, Corsley Reading Room

Saturday 6th

The Elizabethan Evening presents 'Peter Pan', performed by Illyria – 6.30 pm, Manor Farm,
Corsley

Thursday 18th

Church and Community Coffee Morning – 10 am to 12 noon, Three Horseshoes,
Chapmanslade

September

Saturday 3rd

Corsley Fayre – 12 noon to 4 pm, Corsley Showground

Ceilidh with live band and hog roast – 7.30 - 11.30 pm, Corsley Showground

Sunday 4th

Illyria's 'A Midsummer Night's Dream' – 4 pm, Heywood House



Diary Dates

Monday 5th

Corsley Parish Council Bi-monthly Meeting – 7 pm, Corsley Reading Room

Tuesday 6th

Coffee Morning – 10 am - 12 noon, Corsley Reading Room

Thursday 15th

Church and Community Coffee Morning – 10 am to 12 noon, Three Horseshoes, Chapmanslade

Wednesday 28th

Light Bites Lunches – 12.30 to 2 pm, Corsley Reading Room

October

Tuesday 4th

Coffee Morning – 10 am - 12 noon, Corsley Reading Room

Thursday 20th

Church and Community Coffee Morning – 10 am to 12 noon, Three Horseshoes, Chapmanslade

Wednesday 26th

Light Bites Lunches – 12.30 to 2 pm, Corsley Reading Room

November

Tuesday 1st

Coffee Morning – 10 am - 12 noon, Corsley Reading Room

Monday 7th

Corsley Parish Council Bi-monthly Meeting – 7 pm, Corsley Reading Room

Thursday 17th

Church and Community Coffee Morning – 10 am to 12 noon, Three Horseshoes, Chapmanslade

Corsley Fayre

(previously Corsley Show!)

Saturday 3rd September

12 noon to 4pm

Corsley showfield, BA12 7QH

Horticulture and Crafts

The schedule will soon be ready and this year the competitions are much more relaxed! Some of the classes need to have judges, but most of them will be judged by the public - so get your copy from Barters Plant Centre, the village pubs and many other local outlets!

We Need You!

If you'd like to help out at the Fayre, please do get in touch! Fancy helping put up marquees (or take them down), a bit of car park marshalling or stewarding on the day? We'd love to have you on board!

treasurer@corsleyfayre.org.uk

FREE ENTRY FOR EVERYONE!

Come along for an afternoon packed with fun things to see and do!

BRING & BUY SALE



Stalls, refreshments & raffle

To donate items, or book a table and for more information please contact Heather on 01985

213530

you can donate here



in support of

Registered Charity Number 1187766



See page 24 for more info on RDA



Pears Electricians

Nigel Charteris - BSc (Hons) M.I.E.T.



Professional Local Electrician

A HIGH STANDARD OF WORK AT REASONABLE RATES

Part P registered with www.napit.org.uk - Testimonials and references available

Faults & Troubleshooting • Repairs & Improvements
Installation Condition Reports • Boiler Wiring

www.pearselectrical.co.uk

01985 213314 or 07717 534026



S B Services



Contact Sean
07828 671566

*For your garden maintenance
and home improvements*

Magical Maids

Professional cleaning services specialising in
Office and Domestic Cleaning
Holiday Lets • End of Tenancy

Sam 07581 896600

psmagicalmaidscleaningservice@gmail.com



Manor Farm Offices, Corsley



Beautiful Rural Office Space Now Available

Office 1	610 sq.ft	LET
Office 2	285 sq.ft	LET
Office 5	250sq.ft	AVAILABLE
Office 5 price	£20.79 psf / £5197 pa / £433 pm	

*Prices include utilities and services. Contact us for full details

Manor Farm Offices,
Corsley, Warminster,
BA12 7QE

01373 486800

landlord@heywoodhouse.com

www.heywoodhouse.com/manor-farm-office-corsley

BECKINGTON PHYSIOTHERAPY PRACTICE

Has relocated to

Shawford Farm (A36)

Beckington

BA11 6SQ

Keep active with Physiotherapy

Lestley Fussell MCSP, SRP, AACP

With over 30 years of experience specialising in treatment of muscle, and joint problems including:

Back and neck pain

Work and posture related disorders,

Sports injuries,

Joint and muscle problems following accidents and surgery,

Arthritic conditions.

Home visits can be arranged.

Contact 01373 831483

Email lfussellphysio@gmail.com

Come and see us at our new address,

<https://www.beckingtonphysiotherapy.co.uk>

DAVID EDMUNDS & CO

ACCOUNTANTS & TAX CONSULTANTS

*Specialists in the self-employed, small and medium business and self assessment.
Preparation of accounts, VAT, PAYE, income tax and corporation tax returns.*

*Personal, friendly service
Evening appointments by arrangement*

Home 01373 832430

Bride by Design

Bridal gowns and accessories



2 Silver Street
Warminster, BA12 8PS

Please contact us to
arrange an appointment

t. 01985 217216

e. info@BridebyDesign.biz

www.bridebydesign.biz

COMPUTER & LAPTOP REPAIRS
UPGRADES / SYSTEMS & LAPTOPS

VIRUS REMOVAL / BROADBAND
WIRELESS / NETWORKING

nts
COMPUTING

FAST, FRIENDLY, PROFESSIONAL SERVICE
COMPETITIVE RATES
ONSITE OR WORKSHOP

CCC CompTIA
Authorized Reseller

call

01373 302901

www.ntscomputing.co.uk

help@ntscomputing.co.uk

LAPTOP REPAIRS
We also replace
laptop screens,
keyboards,
CD-DVD drives,
fix overheating
and more

James, Rob and Adam, former employees of Roger Patch Ltd are pleased to introduce...

CMP Complete Ltd

General Builders

19 Swaledale Road, Warminster, BA12 8FH

James 07801 868288

Rob 07766 905131

email cmpcompleteltd@gmail.com

HETAS registered to fit woodburners

Warminster
Web Here to help you get online

- ✓ Website Design
- ✓ WordPress Training
- ✓ Website Hosting
- ✓ Logo Design
- ✓ SEO
- ✓ Technical Help

warminsterweb.co.uk

Steve Dayman-Johns
Driving Instructor

Condensed Courses and

Gift Vouchers available

email stevekdj@gmail.com



Tel 01373 865422 - Mob 07730 445648

JONATHAN CORP

Painter and Decorator
General House Maintenance

Sturford Mead Farm, Corsley
Warminster, Wiltshire, BA12 7QU
01373 832213

Do you need a
plumber? Call...



Paul Antell Plumbing

07890 366832

01373 467427

Professional, reliable, friendly and local
paulantellplumbing@talktalk.net
www.paulantellplumbing.co.uk

DAVE THE PAVE

Paving The Way

Brick and block paved drives • Paths • Yards

Kerbing • Patios • Fencing • Walls built

Extensions and New Builds

All type of groundworks undertaken

07710 691052



**Farm Fresh
Free Range
Milk Vending & More**

Available at
The Cross Keys, Corsley

Support your Local Farmers
Cut your Plastic Waste

For help with machines,
call Olly: 07973 884 319 (24hrs)

Bob's bafflers

- 1 Which is the largest joint in the human body?
- 2 In which country would you find the holy city of Mecca?
- 3 Who succeeded Gerald Ford as president of the USA?
- 4 In ballet what is the name given to a 360 degree turn on one leg?
- 5 In the "Wizard of Oz", what was the scarecrow searching for?
- 6 Which is the only European mainland country that shares a time zone with the United Kingdom and Ireland?
- 7 In which country would you find South America's highest mountain, Aconcagua?
- 8 In which country is the opera "Madame Butterfly" set?
- 9 In which English county is the town of Leamington Spa?
- 10 In the classic Jules Verne novel "20,000 Leagues Under the Sea", who commanded the Nautilus?
- 11 Who followed Neil Kinnock as leader of the Labour party?
- 12 In the children's song, what eventually killed the old lady who swallowed a fly?

Answers on page 40

ALLSOP CARPETS & FLOORING

DOMESTIC ♦ COMMERCIAL ♦ INDUSTRIAL

Christchurch Street West, Frome BA11 1EB
TEL: 01373 463866 MOBILE: 07887 953014
www.allsopcarpets.co.uk

KEYVOLUTION

Locksmith and
Carpentry Services
serving the Wiltshire Area

Warminster based company offering locksmith and carpentry.
Police cleared, reliable and honest service.
Any other quote beaten.

- BS3621 lock upgrades for house insurance approval
- Garage doors, locks and running gear
- Lock repairs – specialising in Chubb mortice locks
- Upvc double-glazed door and window locks fitted – even old ones!
- Door or window locks opened destructively or non-destructively (indemnity required for these services)
- Digital code locks supplied and fitted
- All types of carpentry work – mostly 2nd fix and maintenance

Check out my website

www.keyvolution.co.uk

or call Ben on **07748 214799** or **01985 219799**



COMPUTER PROBLEMS?

01373 812804

Email
Advice for new users
Anti-virus defence
Web sites
Custom programming

Networks - home & office
Home tuition
Web access
Privacy & security
Repairs

www.technojeeves.com

info@technojeeves.com

UPVC REPAIRS WILTSHIRE.CO.UK

FOR PROFESSIONAL WINDOW & DOOR REPAIRS

Are you having a problem with your UPVC windows or doors?

- ✓ Misted glass
- ✓ Broken or faulty window hinges
- ✓ Faulty locks
- ✓ Jammed windows or doors
- ✓ UPVC door adjustments
- ✓ Window and door handles

Call us – we are here to help

All work guaranteed

01373 430010 07795 143228 www.upvcrepairswiltshire.co.uk

the three horseshoes

Open daily from 10AM-11PM
serving delicious home cooked food
(12-3, 6-10 Mon-Sat. & all day Sun.)

Enjoy a refreshing drink in our beer garden
with spectacular views of Longleat and Cley Hill,
or indulge with one of our regular meal deals
by the warm open fire on a bitter winter's day.

We organise monthly events,
featuring live music, comedy + much more!

follow us on Facebook for more details



threehorseshoeschapmanslade



Chapmanslade Village Hall

Can be hired for all your functions:
parties, weddings, meetings, classes, etc

For hiring information, phone
Ken Davies 01373 832034 or email
kennethdavies1949@gmail.com

YOGA CLASSES

Corsley Reading Room

Tuesdays 6-7.30 pm

Wednesdays 5-6.30 pm

(other classes also available)

Jackie Jasper

01373 832301 yogawithjackiej@gmail.com
www.yogawithjackiej.co.uk



**Shake off those pounds and
dance yourself fit.**

Chapmanslade Village Hall
Monday 7.30pm - 8.30pm

Longbridge Deverill Village Hall
Thursday 7pm - 8pm

For all levels of fitness and
NO experience needed.

For more information please contact
Amy 07830 119032



Karina

Mobile Hairdresser

Tel. 01373 832823

Mob. 07742 690337

Rose Knight



Dog and cat
minding service

01373 464904

07773 435254

knight_rosemary@sky.com



BUSY BEES PRE-SCHOOL SPACES AVAILABLE FOR SEPTEMBER 2020

- Term-time only 8am to 5pm,
Monday to Friday
- 2-4 year-olds
- Government funded hours for
2, 3 and 4 year-olds



Busy Bees Pre-School
High Street, Chapmanslade, BA13 4AN
Kelly Martin 07749 257608

busybeespre-school@hotmail.co.uk

OFSTED Reg:145873

Charity No:298660

For your
Heating Oil Supplies
contact

KINCH FUELS

at their
local depot in
Devizes, Wiltshire

Telephone 01380 727102

*The company you and
your home will warm to*



LUXURY PRIVATE CAR HIRE

A locally based, door-to-door, personal
service for up to six passengers in
air conditioned comfort
AIRPORTS • SEAPORTS • ANYWHERE

For bookings, please call
01985 840088 07903 307734

Mole Catcher

01373836350

07512681111

No Mole

No Fee



Kevin O'Mahony

Quality Painter and Decorator

Internal and external painting

Artexing

Wallpapering

Coving

Hand painted kitchen units

07724 349447 or 01985 301197
email kevo7743@googlemail.com
www.thewarminsterpainter.co.uk

Instagram: sundowncottagecornwall



Six bedrooms including downstairs room with shower room (sleeps 12). Private access onto beach.
Top class facilities including wi-fi. Pets allowed.
Please ring Sandy Parrish 01373 832522 for details.

Stunning Views on Cornish
Coast near Looe



Housekeeper/Sitter

Totally trustworthy
Excellent references

Mobile: 07522 022809

Email: traceyprice2010@outlook.com



Forrester Sylvester Mackett

SOLICITORS

Expert legal advice from our central Frome office



JANE HEALEY

Your local Wills, Trusts
& Probate expert

JOANNE AYRTON

Your local Residential
Property expert



Contact the team to book an appointment on: 01373 485485

6 Kingsway, Frome, BA11 1BT

www.fsmsolicitors.co.uk

enquiries@fsmsolicitors.co.uk

Chapmanslade Village Hall

Platinum Jubilee

Carol Lewis reports on the fabulous day enjoyed by the revellers in Chapmanslade

Bright and early the field was a hive of activity. Bunting was being hung (home-sewn of course!) gazebos and other tentage erected, tables and chairs set out, bar and tea/coffee station made ready, speakers set up for the music. Lanes had already been drawn for the races, along with a couple of giant games. Camilla was ready to save footballs at the Jubilee shootout; the Queen, Charles & William were ready to have their crowns knocked off, and the corgi's mouth was gaping wide ready to catch the beanbags! (No disrespect to the royal family, just a bit of fun!) Some running repairs were also carried out to the guttering!

12 noon and villagers, family and friends started to arrive. Picnics were set up and puddings set out in the hall – a very varied and appetising display. For those who wished to watch the event in London, it was shown on the large screen throughout the afternoon.

Time for the group photograph – smile, cheer, wave your arms in the air – a variety of poses were captured!

The children's races were run, to great encouragement from onlookers. Egg and spoon, three-legged and sack race. Adults then had their turn – with wily moves to get to the line first!

As forecast, the rain arrived, but many stayed on to celebrate and enjoy the day. The dichards stayed on well into the evening, candelabra on the table, and karaoke being

part of the entertainment. Who knows what time the festivities ended?

Lots of positive feedback was received... 'Great afternoon' 'Huge thanks to the team' 'Excellent' 'Thoroughly enjoyed by all' 'Had a blast' 'My girls loved the Jubilee celebration' 'So many great things to entertain the kids – hats off to you all – great job'.

It was good to see so many people joining in to lend a hand to make it such a memorable day. To quote Frank 'My sincere thanks. As chairman I had very little input so it's great to know the ship sails on regardless! So will the bar and the singing!'

Thank you everyone

Carol Lewis

Looking ahead

Family social events are planned for some Friday evenings over the next three months, cream teas and croquet in August and a quiz in November.

For up-to-date information such as occasional parish council meetings, church services, previous editions of The Bridge, local clubs and activities, business listings, and other useful information, please visit www.corsleyandthebridge.co.uk Want something added? Just email the Editor with your request!

ELIZABETH

PETER PAN

by
J.M. BARRIE

FRASER MARR

"Peter Pan" is presented by arrangement with Great Ormond Street Hospital Children's Charity and Concord Theatricals Ltd. on behalf of Samuel French Ltd. www.concordtheatricals.co.uk



MANOR FARM, BA12 7QE

Saturday 6th August 2022 at 6.30 pm

Tickets: theelizabethanevening.com or 01373 832113

Gates open: 5 pm. Performance approx 1hr 40mins (inc 20min interval).

Cancellation in dangerous weather only, when performance will be rescheduled.

Tickets are non-refundable, except where a COVID-19 lockdown is in place. Booking fees may apply.

SEATING for the play is PROVIDED. Picnics welcome. Licensed Bar.

Donations to Local Food Banks and Mendip YMCA Youth Centre.

CELEBRATE WITH US

IT'S

*Chapmanslade
Primary School*

BIRTHDAY

TURNING

150

15th JULY 2 - 6 PM

Bring a Picnic Raffle
Refreshments Entertainment
Bouncy Castle Face Painting
Children's Disco Ice Creams

Everyone welcome who has
connections with the school now or
in the past!

For further information visit
www.chapmanslade.wilts.sch.uk



BARTERS PLANT CENTRE

'Passionate about Plants'

Shrubs ♦ Perennials ♦ Trees ♦ Roses ♦ Conifers
Climbers ♦ Fruit Trees ♦ Hedging ♦ Soft Fruit ♦ Seeds
Bulbs ♦ Basket Plants ♦ Bedding ♦ Vegetable Plants
National Garden Gift Vouchers

www.barters.co.uk



Barter's Plant Showroom
open 7 days a week

Monday – Saturday 9am – 4pm; Sunday 10am – 4pm

01373 832694 or email: retail@barters.co.uk

www.barters.co.uk



Home Improvements

For all your home requirements

Tiling, decorating, garden fencing, pointing, plumbing,
heating systems, flooring, DIY projects, lighting.

www.homeimprovs.com

07949145960

Vaccinations, flea,
lungworm and
seasonal tick
prevention ... plus
so much more!



Garston
Veterinary Group

25%
Minimum
Savings

Spread the cost of your pet's
preventative healthcare into
affordable monthly payments



Cats £13.00
per month

Dogs from £13.50
per month *

*please contact one of the surgeries for specific prices
for your dog. Prices are based on adult weight.



wellness@garstonvets.co.uk

www.garstonvets.co.uk



Hypnotherapy

If you need help with:

Anxiety
Depression
Phobias (such as flying or spiders)
Panic attacks
Relaxation
Weight management
Smoking cessation
Natural childbirth
Confidence
Public speaking
Exam nerves
and much, much more...

Call ANJI HOLLAND on
07944 647 978 / 01373 832 898
to enquire or just for a chat

www.hollandhypnotherapy.com

With practices in Chapmanslade and Bath

I am a member of the National Council for Hypnotherapists
and am bound by their code of practice and ethics

Outdoor Church – what’s that?

I wonder if you have heard of ‘Outdoor Church’? It isn’t taking what we do in an indoor Sunday service to outside, it is a way of exploring, reconnecting and valuing our environment and giving thanks through creative worship to the Creator God who inspires us to connect with all that is around us.

During the height of the COVID-19 pandemic, people found other ways of being church, all sorts of groups have developed, including Muddy Church, Wild Church and Outdoor Worship. They have four important values; hospitality, creativity, service and authenticity, as all worship should have, but ‘Outdoor Church’ has its own particular way of expressing itself and many people are finding it helpful.

To that end, we invite you to come and join us for ‘Outdoor Worship’ on the evening

of Friday 12th August – there will be more details to follow in the August edition of The Bridge so watch out for it! All ages are welcome, but we particularly invite tweenies and teens to come. You will need to dress appropriately for the weather, who knows what that will be!

It is most likely that we will be in the churchyard at St. Margaret’s, Corsley, as we have running water and loos there for everyone’s convenience and plenty of space around the church. There will be food and drink, an activity, some time to gather around a fire with a time of worship with song, Bible story and prayer but it will be fun and very relaxed and shared. By the way, does anyone have a brazier or a firepit we could borrow?

We look forward to welcoming you.

Reverend Gay Maynard

Corsley Reading Room’s

BUY A TILE scheme is open!

We are pleased to announce that following your suggestions, the **BUY A TILE** Scheme is now live and ready for donations. You can buy as many tiles as you like. Each notional tile is £5 and, if you wish, your name will be up in lights (or maybe ink!) to form part of a lasting art installation.

All donations will go towards the Corsley Reading Room refurbishment and upgrade. Donations can be made on-line via BACS or Credit/Debit card (see our website for details) and we will get 100% of the donations made that way.

If you prefer cash/cheque, then please provide your name and contact details and send with payment to: Corsley Reading Room, c/o Vanessa Hyde, The Forge, 104A Corsley Heath, BA12 7PP, or bring your payment along to a Coffee Morning!

See our website for more information: www.corsleyreadingroom.org.uk

Thank you so much for your support for this important project.

Corsley Reading Room Management Committee

Reflections from South Sudan

Over time I will be sharing the experience of my recent visit to the Diocese of Maridi and of Yambio with various groups, but for now I thought I would just share some reflections. The welcome we (a team of four) received wherever we went was most amazing. The welcome was always sung and by the whole community – we would walk through a guard of honour made up of all the different church groups including the ever-visible Mothers Union members, and always many children from the Sunday Schools along with worship leaders and clergy, which guided us to the entrance of a place. There was always an air of excitement and expectation – I hope we met their expectations. We were bestowed with many garlands, some more fancy than others. They certainly know how to make visitors welcome!

There are such great needs every day; life for the people in these vastly rural areas is hard, very hard, and yet for those who are Christians there is also a joy sustained by the faith that gives them hope always for a better tomorrow. Despite all the challenges, they don't give up and find ways of resourcefulness that can be astounding.

There is a great desire to learn but one of the things that impedes them the most is the lack of finance for school fees. There were many children not in school and we often saw them gathering around the local water pump, collecting water – helping with a very necessary daily need. Thankfully the water that comes from these pumps is helping to improve health but there are still areas that do not have this facility and sickness from drinking unclean water is prevalent. In Maridi it costs just £70 to educate a child at

the Haddow Church Primary School, but of course, for a family that has a large number of children that becomes a much larger figure. Where it's a choice between sending a boy or a girl, it will be the boy that goes and yet it so important to educate the girls so that they have better opportunities. A girl that doesn't stay in education is more likely to begin having children in her early teens and the problem of having so many mouths to feed goes on. If you would like to help by sponsoring a child in education in Maridi for just £70 a year (that is £1.35 a week!) please do contact me.

Coming back to the welcome, it wasn't just the initial celebration of our arrival, it was the consistent care and watchfulness over our wellbeing as guests. We tend to hear only the negative things going on but it isn't all negative, there is much to be thankful for too and I so loved being with them for a while.

Reverend Gay Maynard

Wiltshire Mobile Library

Chapmanslade School

Arrives 1.45 pm, departs 2.30 pm

Wednesday 13th July

Wednesday 27th July

Wednesday 10th August

Wednesday 24th August

Wednesday 7th September

Wednesday 21st September

Wednesday 5th October



E G MARTIN LTD

Heating Oil Distributors

Telephone 01373 822784

Victory Road, West Wiltshire Trading Estate
Westbury, Wiltshire, BA13 4JL

WESTERN SKIP HIRE

Telephone 01373 813132

Victory Road, West Wiltshire Trading Estate
Westbury, Wiltshire, BA13 4JL



Domestic Appliance Sales and Repair Service

Domesticare

21 Keyford, Frome

www.domesticarefrome.co.uk



01373 467351

Ski Apartment – French Alps

Ski in/ski out – sleeps 6

Well equipped – immaculate condition

For more information or to book online visit:

w. www.ski-les-cimes.co.uk

f. facebook.com/ski.les.cimes

e. lesleygolledge@gmail.com

t. 01373 832533

TEA & sympathy

Considerate catering at a difficult time

*All our food is homemade, we provide delicious teas, sandwiches and cakes
through to more elaborate options.*

We offer a truly bespoke, caring and professional service.



Telephone Kim Clark on 01373 832151 or 07843 056916

e-mail kim@teaandsympathy.uk.com

www.teaandsympathy.uk.com

Six Open Doors

Dear Friends,

As many of you know, recently I travelled to the US to visit my youngest daughter and family. I hadn't been for three years for obvious reasons, so I was really delighted to be able to go this time.

I love New York, and Brooklyn, where my daughter lives, is about as different to our villages as you could possibly get. It's noisy; JFK airport is only 30 minutes away (on a good day) so the sound of aeroplanes escaping the city is a constant background accompaniment. Add to that the sound of tyres on tarmac and the ever-present sirens from police cars and fire engines, and you get the picture. Space is another issue; the shops, houses, apartments, coffee bars, and numerous other places are crammed into every inch of available space, although I have to say there is a beautiful park near my daughter's apartment with meandering paths through the woods and wonderful lake, so I did get my 'green' fix most days.

But after about a week I was beginning to miss the countryside I/we take so much for granted and as the time to come home approached I was desperate for some quiet and the sight of the downs and fields that surround us here.

Isn't it funny how time away from home, indeed time away from our nearest and dearest can really change our mindset with regard to how we relate to our surroundings both in terms of our families and the context in which we live; towards the end of my stay in New York I swore that I would never moan about English weather again, after all, it's the rain that makes the countryside so verdant and green.

Of course, the corollary to all this is the temptation to look back at past times and bemoan the fact that 'things were different then', meaning, they were infinitely better. It always makes me laugh when I read the bible story of the Israelites escaping their captivity in Egypt. Initially they are relieved and grateful to be free from slavery, but then the moaning starts and they say to Moses: "Why did you bring us out of Egypt? Did you bring us out here in the desert to die? We could have died peacefully in Egypt; there were plenty of graves in Egypt. We told you this would happen! In Egypt we said, 'Please don't bother us. Let us stay and serve the Egyptians.' It would have been better for us to stay and be slaves than to come out here and die in the desert."

A yearning for past times and incessantly looking ahead to what we hope will be better times, both result in the same thing; we fail to appreciate this moment, this person, this gift of life in all its fullness today.

Of course, hope is important, but as we move into these glorious summer months, let's make sure we give thanks for the extraordinary 'now' of our existence with all it has to offer us.

Love and prayers,
Pauline

July Church Diary

Saturday 2nd July

American Independence Day Extravaganza

6 pm - 10 pm, Corsley House



3rd July Trinity 3

8 am Holy Communion Kingston

9.30 am Eucharist Corsley

10 am Morning Worship Longbridge



Wednesday July 6th

Crafternoons, 3 – 5 pm (in the gallery), Three Horseshoes, Chapmanslade



10th July Trinity 4

9.30 am Eucharist Chapmanslade

10.30 am Eucharist Kingston



17th July Trinity 5

10.30 am Eucharist Brixton

11 am Matins Corsley



Thursday 21st July

Community Church and Coffee Morning

10 am – 12 noon, Three Horseshoes, Chapmanslade



24th July Trinity 6

9.30 am Eucharist Chapmanslade

10.30 am Eucharist Longbridge



Thursday July 28th

Crafternoons, 3 – 5 pm (in the gallery), Three Horseshoes, Chapmanslade



31st July Trinity 7

Benefice Service

10.30 am Horningsham

American Independence Day Celebration and Corsley House Open Garden



6 pm to 10.30 pm, Saturday 2nd July 2022
Corsley House, BA12 7QH

Come celebrate America's Independence Day with a
12-piece Motown band and spectacular fireworks.

Join us beginning at 6 pm for a stroll around the garden to see
what a difference a year makes. Then bring your dancing shoes (or sit on a rug) to
enjoy Motown Gold, one of London's hottest acts, beginning at 6.30 pm.

Bring a picnic or purchase a range of American barbecue classics
provided by Roth Bar, including soft drinks, wine and beer.

The evening culminates with a spectacular firework show with Cley Hill as the backdrop.

Tickets £20 for adults, £10 for 14- to 18-year-olds and children are free.

Limited tickets so please book early

No dogs allowed

Purchase tickets at chogtickets2021@gmail.com or,
if no access to email, phone 01373832074

All proceeds will go to the Corsley and Chapmanslade Churches
who have earmarked the funds to support our community.

Parish Contacts for Corsley and Chapmanslade

Rural Dean	Rev Pauline Reid (day off is Fridays) revpauline@btinternet.com	01985 841290
Associate Priest	Rev Gay Maynard (day off is Mondays) revgaymaynard@gmail.com	01373 832490
Lay Pastoral Assistants	Barbara Hughes Claire Tanner	01373 832273 01985 218099
Pastoral Visitor	Alan Hopkinson	01373 832393
Churchwardens St Margaret's St Philip & St James'	Vacant (contact Rev Gay Maynard) Ian Buick	01373 832490 01373 832318
Deputy Churchwardens St Margaret's St Philip & St James'	Vacant Janet Aylesbury	01373 832752
PCC Secretary	Sue Fear	01373 832074
PCC Treasurer	Ian and Janet Buick	01373 832318
Planned Giving Officer	Judith Helliard	01373 832803
Benefice Administrator	Vacant	
Choir Leader	Claire Tanner	01985 218099
Tower Captain	Michael Attenborough	01373 832777
Electoral Roll	Di Britten	01373 832515
50/50 Club	Neil Britten	01373 832515
After Alpha Home Group	Trudi Hopkinson	01373 832393
Time To Think Home Group	Renee Cole	01373 839008
Light Bites Lunches	Maureen Willcox	01373 832171
Benefice Webmaster	Mike Palmer	mjp.mikepalmer@gmail.com

Copy for Six Open Doors should be sent to Di Britten at dianabritten69@gmail.com
Please contact Di if you would like to receive weekly news of Church events and activities

Little Cuckoo's Pre-School

Lyes Green, Corsley, BA12 7QH

Friendly, dedicated pre-school in the heart of the countryside for children aged 2-5 years

Monday, Wednesday, Thursday and Friday
9 am - 3 pm during term-times

We accept 2-year-old funding in accordance with Wiltshire Council guidelines

Mother and Toddler group Tuesday mornings
10 am - 11.30 am during term-times



SESSIONS AVAILABLE NOW

Speak to Hayley McMahon
Pre-School Manager on 01373 832298

Find us on facebook or visit www.littlecuckoos.co.uk

A free trial session is available

Registered Charity Number 1064800

Corsley Tennis Club



New members welcome –
all ages, all abilities

Three hard courts available all year

Weekly junior coaching available
Low subscriptions

[www.clubspark.lta.org.uk/
CorsleyTennisClub](http://www.clubspark.lta.org.uk/CorsleyTennisClub)



CHRIS SEVIOUR
Building Services

07894 708949

cmseviour@gmail.com

Roofing, Loft conversions,
Extensions, Plastering,
Natural stonework

Cross Keys

Community Free House
Lyes Green, Corsley, BA12 7PB

Monday, Tuesday, Wednesday
6pm - 10pm

Thursday
12 noon to 3pm and 6pm to 10pm

Friday, Saturday
12 noon to 11pm

Sunday
12 noon to 6pm

Food timings may vary

01373 832406

www.crosskeyscorsley.co.uk

info@crosskeyscorsley.co.uk

Facebook @CrossKeysInnCorsley

NOTEBOOKS²GO

Laptop / PC / Tablet / Phone / Apple
Repairs / Upgrades / Accessories



We can repair all of your
Apple Devices!

Tablet & Smartphone Repairs
"Affordable Reliable Service"



Screens - Charge Port - Camera - Battery - Headphone Jack & More

Computer Repair

any brand, any problem



51 Haynes Road, Westbury, Wiltshire, BA11 3HD
Tel - 01373 865400 / Email - support@notebooks2go.co.uk

Corsley Tennis Club News

Its summer! Sunshine (sometimes), strawberries and that fizzy alcoholic drink that goes with them – it's peak time for tennis in the UK!

No longer restricted by COVID-19, the big tournaments are well under way; Eastbourne, Wimbledon and, here in the village, the local league games and club tournaments are in full swing.

If you are lucky enough to have tickets for the BIG events, you'll get the chance to pick up tips from the greats or perhaps just to admire their skill and resilience. Of course you can also do that by watching the TV coverage and those members who are taking part in our local events have been putting those observations to good use.

We still have the American and Over 70s Tournaments to be held on 3rd and 14th July, so there's more keen competition and excitement to come.

Our new coach, Callum Close, has been running group sessions for adult beginners and improvers. It's not easy re-learning how to hold the racket or where to stand on the

court, but hopefully it will pay off when I get to the two tournaments I have dared to sign up for. Information about Callum's coaching and the courses he will be running for children are on his website and information about the Tennis Club is on our website.

**[https://clubspark.lta.org.uk/
CorsleyTennisClub](https://clubspark.lta.org.uk/CorsleyTennisClub)**

**[https://clubspark.lta.org.uk/
CallumCloseCoaching](https://clubspark.lta.org.uk/CallumCloseCoaching)**

We are told that tennis is a good sport for maintaining health, fitness, strength and agility and also has social and psychological benefits – so why wouldn't you?

It's certainly great to see the playing field busy with tennis and cricket players and children and young people making use of the play area on summer evenings. We are so lucky to have those resources in the village and the keen volunteers and committees that keep them going for us. Thanks go to them.

See you on court!

Liz Garrett, Club secretary

Riding for the Disabled Association

Saxon Group

We're based at Widbrook Equestrian Centre in Bradford on Avon. We provide riding and horse-related activities for adults and children with both physical and learning disabilities. The benefits of riding and being around horses are immeasurable and, for some, their only social outing each week. Horses provide both physical and emotional stimulation,

with riding being a vital form of physio for people with physical disabilities. For someone who is confined to a wheelchair, riding can give a feeling of freedom that might not be experienced at an other time.

We are a small charity relying solely on the help of volunteers to provide this invaluable service. We receive no government funding and are only able to keep functioning through fundraising, donations and charging a small fee for lessons

Tickets;

Adults

£16

Children

(u13)

£10

All proceeds
to BCUSG

The Corsley Ceilidh

Saturday 3rd September

7.30pm – 11.30pm at

Corsley Showfield

(suitable footwear advised for a field)

**Ceilidh Barn Dance with Live Band,
Hog Roast and drinks for Sale**

Raising money for the radiotherapy team at Bath
RUH who are fundraising for a high precision
Surface Guided Radiotherapy System.

Please call Debbie on 07713625665 or

e-mail corsleyceilidh@gmail.com for more details



Corsley WI

June news

Patricia Sharrocks rounds up the June meeting and announces some forthcoming events



There was a change to our scheduled meeting about the Vatican as the speaker was taken ill; we wish Alistair Benbow a speedy recovery. Instead we learned about 'Blue Footed Boobies and Other Exciting Wildlife' as one of our members, Eve, stepped into the breach to give an entertaining and informative talk about the Galapagos Islands.

These are a group of volcanic islands in the Pacific Ocean, some 600 miles off the coast of Ecuador, many of them uninhabited by people. Although they are volcanic, ageing of the lava has allowed plants to grow; such as cacti, grasses and even small, slow growing trees. Some are fringed by bright green mangroves which grow in salt water.

Eve showed slides of some of the creatures which live there including a number of amazing birds. We saw flycatchers and pelicans, finches and mocking birds, flamingos and penguins. There were pictures of frigate birds; in flight, their dark silhouettes looking almost prehistoric. The male has a red throat pouch which he can inflate; very impressive and designed to attract the female. Then there were the Boobies; these are large birds with brightly coloured webbed feet, blue or red, which are very striking!

As well as birds, we saw sealions, brightly

coloured crabs, lizards and iguanas. Both land and marine iguanas live on the Galapagos Islands and sun themselves on rocks and sandy paths to warm up. When walking you must be careful where you put your feet as they, like all the animals and birds on the islands, do not fear approaching humans. The wildlife there is fearless because they have no natural predators. Close up photos are easy!

When Charles Darwin visited the islands he noticed that similar birds were different on each island and had developed different beaks to adapt and survive. These observations led to his theory of evolution. Today the research station on the islands, which is named after him, does important work in conservation and is a good place to see the Galapagos giant tortoises. We could see from the pictures that they are very well named!

We all enjoyed seeing this unique and very special place. We look forward to our next meeting, which will be held on 14th July at 7.30 pm in the Reading Room, when Rachel Boothroyd from Cooper & Tanner will be talking about 'Gemstones'. Guests are welcome to come along, we are a very friendly group.

For more information, please contact Alice Helliar on 07989 339632



Chapmanslade Parish Council

Parish Council Briefing

Councillor Phil Holihead reports on the PCs recent activities

There was no PC meeting in June, the next meeting is scheduled for 14 July 2022.

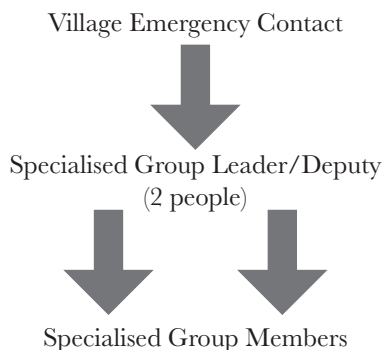
Planning Application

PL/2022/04014 2 Pedlars Grove: Change of use of the garden room to a hair salon. There were no objections.

Resilience and Emergency Planning

Councillor John Foster has done excellent work to get the contingency plan to cover major emergencies when the emergency services are struggling to respond (i.e., worst case scenario) off the ground. The framework is in place and work will start soon to create small 'cascade' groups which might be approached to assist in the event of such an emergency scenario. There will clearly be some lessons learned from the COVAG team who are providing valuable input to the plan.

Typical cascade groups will be based around peoples' phone numbers and be formed along the following lines:



The type of specialised groups envisaged include, but are not exclusive to:

- People with medical skills
- 4x4 owners
- People with tractors
- People with heavy lift equipment
- People with drain clearing equipment
- People with chainsaws
- People prepared to be messengers to ensure information is spread across our whole community when an emergency arises
- People who can offer shelter and/or meals and refreshments
- People prepared to be emergency road marshals
- Etc...

More will be forthcoming as the plan is turned into a working document over the next couple of months, but if you think you can assist in any of the roles above, then do please pass your contact details either to me, or John Foster:

*cllrphilholihead@gmail.com
cllrjohnfoster@gmail.com*

Deedle's Pets



DOG GROOMING AND PET SERVICES

SERVICES

Dog Grooming
Dog Walking

Pet Sitting
Pet Supplies:
Natural dog treats & pet accessories

Emmi Pet
Teeth Cleaning

Email: deedlespets@gmail.com

Phone: 07830066030

www.deedlespets.com/shop
@Deedle's Pets Social

Contact

OFF THE HIGH STREET HAIRDRESSING

UNISEX HAIR SALON
OPENING IN APRIL 2021 IN THE VILLAGE OF
CHAPMANSLADE.

AMY PRATT WILL BE MOVING HER TALENTED SELF
AND SALON, PREVIOUSLY TREVOR AND JON IN
TROWBRIDGE TO THE LOVELY VILLAGE. AMY HAS
OVER 20 YEARS OF EXPERIENCE.

FOR ALL NEW ENQUIRIES PLEASE CALL AMY ON
07740799341

THE NEW SALON ADDRESS IS 2 PEDLARS GROVE,
CHAPMANSLADE, BA13 4AZ.



Tile Master

Restore • Protect • Maintain

11 Services & Treatments
• Repointing & Grouting
• Sealing & Polishing
• Stain & Discoloration
• Deep Cleaning
• Grout & Sealant

Tile
Master

0161 444 0377
www.tilemasterpro.co.uk

Nation Wide Floor

Google

Reviews ★★★★★

5 ★

RATED



Tiles



Stone



Vinyl



LVT



Wood

Please contact us to receive
your free demonstration

01373229166

www.tilemasterpro.co.uk/frome

Types of surfaces
we can restore:

- Ceramic Tiles
- Limestone
- Sandstone
- Porcelain
- Travertine
- Stone Tiles
- Granite
- Slate
- Natural Stone
- Marble
- Mosaics
- Flag Stone Tiles



15% Discount code: TM63

Please quote this code when contacting us

Seasoned Logs

Hardwood, softwood, barn dried, kiln dried

Kindling and stacking service

All with free local delivery

Tel/text Garry on 07801 179917

Standard load £120 for 1.6m³ or 700kg

All our timber is ethically sourced from local woodland
and is fully seasoned before delivery

Please check out

“woodlandworks”

on Facebook or Instagram

Mrs B's Caring Catering Ltd

Celebration parties

Funerals

Weddings

Finger buffets

Boxed lunches

Lunches

Dinners

**with waited, buffet or
delivery only service**

01373 452593

office@MrsBsCaringCatering.co.uk

www.MrsBsCaringCatering.co.uk

Unit B1 Southgate, Commerce Park, Frome, Somerset BA11 2RY



Sharon's Foot Clinic

SAC Dip FHPT SAC Dip FHPP



Fully insured and highly trained

For the professional treatment of:
Corns · Callus · Cracked Heels
Athletes Foot · Fungal Infections
Thickened Nails · In-growing Nails
Diabetic Foot Care · Verrucas
Nail Cutting · Nail Reconstruction

Contact Sharon on

01373 836734 or 07728 200402

Clinic appointments at

12 Sunny Hill, Nunney, BA11 4ND

Home visits also available

Chapmanslade Motor Services

**Vehicle repair
and servicing**

**Brake
specialist**

**MOT preparation
and repairs**



**Batteries
Exhausts
Tyres**



Quality service at competitive rates

FREE ~ wheel balancing and tracking with new tyres

FREE ~ courtesy car

Electronic diagnostics available – most makes covered

Green Farm Industrial Estate, Chapmanslade

01373 832188 or 07711 256927





**01373
455911**

CLEANING & MAINTENANCE 2000 LTD

OUR SERVICES INCLUDE

- Domestic Cleaning
- Commercial Cleaning
- Upholstery Cleaning
 - Carpet Cleaning
- One off Spring Cleans
- Garden Maintenance
 - Home & Garden Clearance

 www.busybees2000.co.uk 
info@busybees2000.co.uk

**JOHN E S JONES
& SON LTD**

**GENERAL
BUILDER**



Carpentry, painting and
decorating, extensions, uPVC,
facias and gutters, fencing,
decking and patios

Please call

01373 832600

07795 177920

07810 646335

Happy Hounds

DOG WALKING WITH MELANIE LUCAS

melanie.lucas@happyhounds.life • 07867798035 •

Chapmanslade

ILES & VINCENT FUNERAL SERVICES

WARMINSTER'S ONLY INDEPENDENT FUNERAL DIRECTOR



Classic and traditional funeral ceremony, small and intimate service or no service at all with a direct cremation, we are here to help, guide and support you every step of the way with sensitivity, experience and empathy.

24 hour professional & caring service

The Cornmarket, Warminster, BA12 9BX

01985 220161 (24 hours)

info@ilesandvincentfuneralservices.co.uk

M W Garden Services

20+ years experience

A tailor made service for all types of garden maintenance

Insured and CBI's checked

mark22.weaver@mypostoffice.co.uk

Telephone 01373 832854

Mobile 07921 818452

JERRY RAYNER
boiler maintenance

01985 841461 or 07775 755981

FOR SERVICING AND BREAKDOWN
OF OIL BOILERS

also AGA and RAYBURN

- Competitive rates
- Friendly, helpful and efficient
- Call now for a quote

Wren House

Residence for the retired and elderly

Wren House in Warminster is a long-established, elegant retirement home, specialising in individual care in gracious surroundings. Having just thirteen rooms, each with a private bathroom, we are able to offer the ambience of a family home, together with caring staff and the facilities to enable our residents to enjoy their later years with dignity.

Wren House serves fresh, locally-sourced, home-cooked food. Residents enjoy a varied activity programme which includes a gardening club and our own choir.

Mrs Ellie Simmonds

Wren House Ltd, 32 Vicarage Street, Warminster, BA12 8JF

Telephone 01985 212578

wrenhousewarminster@hotmail.com

www.wrenhousewarminster.co.uk

Wonderful Walks

Into South Gloucestershire



across the road, a turning into St. Martin's Lane, with a church-like building at its right. That was the Congregational Chapel, built in 1848 and now a private home. Turn into this lane and keep walking, passing the old school building next to the chapel and heading downhill, on a bendy road. There are new homes on your left, while on your right will be fields. Pass St. Martin's Park on the left and a farm on the right and you'll see 'Sheepfair Lane' on your left, narrow, twisty and usually muddy, but go that way.

If you use SatNav or something similar, key in 'Marshfield Almshouses', as that's where this month's walk begins. Marshfield is an unusual town, small, affluent and remote, but spread along one edge of the bypass towards Chippenham from Bath, so well-connected.

Park near the Almshouses at the Bath end of the village, built for the poor by local wealthy merchants and finished in 1619; the entrance arch is ornate, with a coat of arms. Head for the town, passing Georgian houses of differing degrees of wealth, until you see,



Sheepfair Lane is long, winding downhill past fields, farms and farmland. Marshfield's wealth began with sheep, wool and sheep fairs, but when that declined, malting barley became the most important trade. There were once 14 malting houses on the High Street! Walk till the lane splits and take the right fork, into Weir Lane. When the lane curves left, you'll see a strange watery structure on your right. This is Weir Pool, where stagecoach wheels ran through the shallow water and were cleaned off! Round this bend and you're in for a steep climb uphill.

On High Street, turn right, passing the National School, built in 1861 and displaying the coat of arms and motto of New College, Oxford; it's now a private dwelling. To your left should be Marshfield's stumpy



Weir Pool

War Memorial, with its etched design representing the armed services. Veer right again, into Market Place and follow the road round. On your right now, should be the Old Vicarage, with its front façade rebuilt in the 1730s. The road here curves left, passing buildings on both sides, but allowing you glimpses of the land in the valley below. There are footpaths here, so do some exploring, BUT remember that what goes downhill has to climb back up – and that includes you! Also

remember that valleys are where the wet ground will be, however dry it is at the top!

Eventually, pass the junction on the right to Ringswell, and pass quaint cottages on your left, but use their paved path, going left into the churchyard. The church is St. Mary's, dedicated in 1242 when it was owned



The National School



St Mary's churchyard

by Tewkesbury Abbey; there's been a church here since at least 1125. This one was rebuilt in the late 1400s and restored in Victorian times. Follow the churchyard path out into Church Lane, passing the Manor House on the right and rejoining the Market Place soon after.



Cross to the left-hand side of the road, where the National School is and, beyond the War Memorial on your right, is the scaffold-fronted Lord Nelson inn, built as a private house around 1700. Cross the top of Weir Lane and the next thing is Bond's Garage, a dairy until the 1930s. The garage's front window is full of cups and trophies, won by showing their lorries at various fairs.

Next is 'Sweetapples Teashop'. If you hope to break your walk here, ring and book a table (01225 891657), as it's small but very popular; there's parking and outside seating behind the building. My granddaughter and I come here when I visit and we always book. I have the veggie breakfast and a small portion of chips for lunch, but if the great-grandchildren are with us, my chips disappear and the ramekin

of baked beans vanishes, too!

Past the teashop is Tolzey Hall, Marshfield Town Council's base, built in 1690; there are public toilets here. Stay on this pavement and you'll pass the village shop, which is well-stocked with goodies. Further on is the 'Bank House', built as a bank in 1792, but used as a doctor's house and surgery from 1890 until the 1970s. Study the doorway, where there's a day bell, a night bell and a 'speaking tube', reminders of its surgery days. Once you pass the turning to St. Martin's Lane on your left, you may be able to see your car, after about three miles walking and numerous architectural gems!

Church and Community Coffee Mornings

Third Thursday of each month
10 am to 12 noon

The Three Horseshoes, Chapmanslade

Whitbourne Chapel

*“Most importantly, here to worship God.”
Opening words from SASRA speaker, John Lewis*

Preachers for July:

- 3rd Trevor Brain from Operation Mobilisation
- 10th John Hobson from Clink Evangelical Church
- 17th Jim Short, representing ‘Good News for Everyone’
- 24th Chris Andrews from West Lavington Chapel
- 31st Andrew Coxhead, our injured preacher from May!

Soldiers’ and Airmen’s Scripture Reading Association

SASRA Representative, John Lewis, served in the forces for almost 40 years and began his Service with us with an impressive statement. “I’m here to talk about the work of SASRA, but most importantly, here to worship God.” After our opening time of prayer, he showed us three pocket-sized Bibles. One was a 1628 King James’ Version, one a 1900 Bible from the Boer War and the third was a modern soldier’s Bible.

SASRA is 186 years old. It began before the Crimea War, when Bibles were sent out to the troops, though few could read them. Eventually a call went out for ex-soldiers to go to the Crimea, to read the Bible to the men there. At present there are fifteen readers, mostly based in the UK, but it’s hoped that

one can be sent to the forces in Cyprus, to introduce them to the Scriptures and show them Jesus.

John told us that when soldiers enlist, they are given a form with a section on: Do you want to know more about the Christian faith? Around 70% of new recruits tick that box! A table was set up at Chapel and filled by John with literature, which we could peruse and take away, including a few modern Soldiers’ Bibles.

Our reading was from John’s Gospel, Chapter 12, verses 20-36. This is about a party of Greeks, in Jerusalem for the Feast of the Passover, who asked to see Jesus. They’d probably heard about the raising of Lazarus

from the dead and seen Jesus’ triumphal entry into the city on Palm Sunday. Jesus talked to them about a grain of wheat, saying it had to fall to the ground and die, in order to produce more seeds. He was really telling these men they were meeting a condemned man and predicting

His own death. The crowds gathered round didn’t understand Jesus’ message and it’s likely the Greek party didn’t, either.

But these words resonate with John, as a soldier, and remind him of servicemen who made the final sacrifice in different wars. He also told us, “The glory and garbage of war produces horror – but also produces loyalty and love.”



Please remember:

If you need help or simply someone to talk to, ring 07980 013685 and we'll do our best to help you. Otherwise, visit our website www.whitbournechapel.org.uk or google 'Whitbourne Baptist Chapel'.

Your Local Electrical Services

OVER
50
YEARS
Est. 1971

FAIRFIELD ELECTRICAL

The new name for Lawrence Fairfield Ltd

LIGHT, WARMTH, POWER & PROTECTION

Call or email now for a free quote

01373 464577

enquiries@fairfieldelectrical.co.uk

www.fairfieldelectrical.co.uk



allsorts OF FENCING

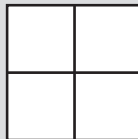
Your local Fencing Specialist

Stock Wire / Post and Rail / Close board
Decking / Patios / Gates / Sheds / Pergola

www.allsortsoffencing.com

01373 832339 / 07710 180551

Also: Topping of Fields and Paddocks



White Horse Windows Ltd

Windows, Doors,
Conservatories and more...

Local company, exceptional standards

10 year guarantee

*Windows Fascia & Guttering
Doors Conservatories*

CERTASS Registered

For a free quotation contact Ryan on

07909 441442 or 01373 302594

ryan@whitehorsewindows.com



KB Landscape

30 years in landscaping

Phone

01373 832371

Mobile

07951 297173

Kevin Brixey - for quality and experience

5 Red Cottages Corsley Warminster Wiltshire BA12 7PS

Landscaping
Patios and paths
Turfing and seeding
Brick and stone walling
Decking and pergolas
Block paving
Gravel drives
Pond work
Fencing

Paul Ledbury

Quality Painting and Decorating

30 years experience

**INTERIOR AND EXTERIOR
GENERAL MAINTENANCE**

5 Hampshire Gardens
Westbury, Wiltshire
BA13 3EX

**Telephone 01373 858163
Mobile 07976 242045**



Lending with Heart and Mind

**Wiltshire Council fund a not-for-profit
loan scheme for homeowners.***

If you have lived in your home for over 5 years and:

- Are over 60; or
- Are in receipt of State Benefits; or
- Have children under 16 living with you.

You may be eligible for a home improvement
loan to keep your home warm, safe, and suitable
for your needs.

Lendology CIC work in partnership with Wiltshire
Council to deliver the council subsidised loan scheme.
Our knowledgeable team of advisers will guide you
through the process of applying.

To book a no-obligation assessment, or for more
information, visit www.lendology.org.uk
or call 01823 461099.

Heatherton Park Studios, Bradford on Tone, Taunton, TA4 1EU

*subject to eligibility



Hand made rusted iron
flowers for your garden
Great gift for any
occasion
Annie 07967367942
annie_wild@hotmail.com



Forget-me-not

• GARDENING SERVICE •



Weeding, pruning, planting,
fence painting, etc

01373 464416

07890 850465



Local Electrician

All Domestic and Commercial Work Undertaken
Part "P" Registered NAPIT Approved "Full Scope" Installer
Fixed Wire Electrical Testing and Thermal Imaging Reports
Portable Appliance Testing
Aico Approved Installer for Fire detection
Service/Maintenance Contracts Available

Call us on:

01749 850769 or 07779 429786

Email: ian@fushi-electrical.co.uk

www.fushi-electrical.co.uk



Mobile Foot Clinic



Jana Twinney
Dip FH MCFHP MAFHP

Long, Thickened, Ingrown or Fungal Nails,
Callus, Corns, Cracked Heels,
Athlete's Foot + Diabetic Foot Care,
Massage and Foot Care Advice

**Registered member of the British Association
of Foot Health Professionals**

Fully insured and experienced
Based in Frome and surrounding area

Please phone or email for an appointment

**jana.twinney@gmail.com
07922 679 638**

A view from over the hedge...

Countryside Matters

Judith Helliard on the weather, wasps and other goings-on down on the farm

The weather once again dictates the lives of farmers and growers and, once again, we see history repeating itself. Reading my daily paper on 18th July, under the heading 'Weather Notes', it said that in 1730 King George 11 made a banal observation "Three fine days and a thunderstorm."

We have just experienced three of the hottest consecutive days recorded for June, with temperatures reaching 28-30°C followed by a sudden drop of 10C-15°C with the rising humid air causing storm clouds to form resulting in significant downpours of rain!

The sudden high temperatures created a good enough window of lovely hay-making weather. This is a joy for every farmer as good hay is a really good treat for young or sick cattle and is especially good for horses as it is free of dust, easily digested and full of natural herbs. The pleasure in the smell of freshly-made hay is a real treat!

I cannot remember such a wonderful year for elderflowers in our hedgerows, so I hope many of you will have had time to make elderflower cordial or 'champagne'. Elderflower and blackberries seem to grow best just out of reach! Blackberries will be ripening in the next month or so, so do walk

the footpaths and bridlepaths where the fruit is free of dust and fumes from traffic.

A recent incident occurred on the farm when one of our staff opened a field gate to bring the cows back to the parlour, when she disturbed a wasps nest near the gateway. The wasps attacked her so badly that she had to be treated by nurses at the local hospital.

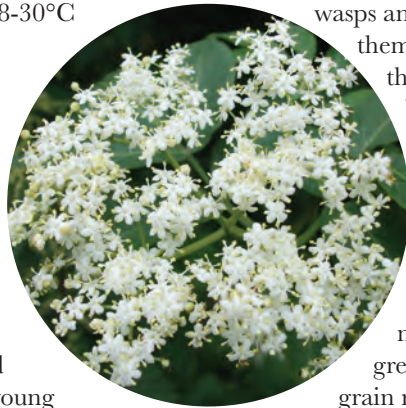
Animals, including dogs, will be very wary of

wasps and swarming bees, noticing them far quicker than humans; they can often be heard before being seen, so do be aware that there are hidden dangers like wasps, bees and hornets nesting, swarming or just living in fields, hedgerows and on banks .

The fields of cereals are now beginning to change from green to a golden colour as the grain ripens. It is essential this year that the harvest of all cereal crops is good as there is obviously a worldwide shortage of grain for human feed as well as stock-feed.

For the next few months there are country fayres, shows, open days and open gardens, do go along and see the English countryside at its very best and support local business and charities – you never know you may find a new hobby or lifestyle that interests you, here in our fabulous countryside.

Judith Helliard



Corsley Reading Room

Your 'village hall'

Chairman, Hugh Deed, reports on the latest happenings at the hall



Coffee Morning and unveiling

The next Coffee Morning on 5th July (10 am – 12 noon) will see the formal unveiling of the enlarged photographs in the main hall. Why not make an extra effort to come along and see them as well as catch up on the local chat?

The more who come the more we all learn about what is going on in the village!

The August Coffee Morning is on Tuesday 2nd August – put it in your diary now before it creeps up on you!

Refurbishment programme and 'Buy a Tile'

The 'Buy a Tile' scheme has been launched. See our website for details of how to donate

and buy tiles. Your support is important to us no matter whether it is one tile or more.

You can buy as many tiles as you like. Each notional tile is £5 and, if you wish, your name will be up in lights (or maybe ink) to form part of a lasting record. If you prefer to pay with cash/cheque then please contact Vanessa Hyde, or see one of the committee at coffee morning perhaps.

Your support to this is very much appreciated. All donations will go towards the Corsley Reading Room refurbishment and upgrade.

We have had no feedback yet from our grant applications other than acknowledgements that they have been received.

See website www.corsleyreadingroom.org.uk for up-to-date information and more details about the Reading Room. To hire, see the website or call Gill Parkinson (01373 832322) to discuss.

Hugh Deed

Chairman of Management Committee

Chairman@corsleyreadingroom.org.uk

01373 832897

Committee Members

David Carruthers, Hugh Deed, Claire Firman-Ford, Liz Garrett,
Vanessa Hyde, Jackie Jasper, Gill Parkinson, Mark Richards

Small ads

£1 for EACH item for sale or wanted (cash only please) - at one of the two drop-off locations)

Please note: no cash, no advert!

Answers to Bob's Bafflers

- 1 Knee (hip joint is the largest weight bearing joint)
- 2 Saudi Arabia
- 3 Jimmy Carter
- 4 Pirouette
- 5 A brain
- 6 Portugal
- 7 Argentina (nine miles from Argentina's border with Chile)
- 8 Japan
- 9 Warwickshire
- 10 Captain Nemo
- 11 John Smith
- 12 A horse (she's dead of course!)

Local organisation adverts

£2 per month for a small boxed advert or £7.50 for a full page. Full page adverts are allocated depending on space available and cannot be guaranteed. All monies must be at one of the two drop-off locations (Barter's Plant Centre or Acres Supply Garden Centre) by **4pm** on the **19th** of the month. Please note: no cash, no advert!

Trade advertising

Annual trade advertisements (12 issues, when space is available)

1 space	(69mm wide x 33mm high)	£22.00
2 spaces	(69mm wide x 66mm high)	£42.00
3 spaces	(quarter page - 69mm wide x 100mm high)	£60.00
4 spaces	(138mm wide x 66mm high)	£75.00
6 spaces	(half page - 138mm wide x 100mm high)	£104.00

Trade advertisement material should be supplied in print-ready format, to the chosen standard size and correct shape.

For trade advertising enquiries, please contact David James (Trade advert coordinator/Treasurer) at either thebridge832@gmail.com or 01373 832443.

5% discount on firewood for tenants of Longleat Estate

Pick your own kiln-dried logs ready to burn

or have standard hardwood
logs for storage delivered
to your door.



Monday to Friday: 7:30am to 4:15pm

01985 213507

longleat.co.uk/forestry

LONGLEAT
FORESTRY



cloud
homecare

Quality care and
support in Warminster
and the surrounding
villages



We are a small, Corsley based care provider

**We provide care to people who need support
to remain living in their own home**

**Please telephone or email us, or visit our
website for further details**

Tel. 01373 832 597 enquiries@cloudhomecare.co.uk
www.cloudhomecare.co.uk

Acres Supply



**POND
PUMPS
&
FILTERS**

**POND
TREATMENTS
&
FOOD**

**POND
FISH**

Marine and Tropical
Aquariums, fish, corals, plants, food, substrates, treatments, pumps, filters... we stock everything you need to keep your aquarium in tip-top condition

Acres Supply, Corsley, BA12 7PP
t. 01373 832591
e. info@acressupply.com
w. www.acresaquatics.co.uk
f. facebook.com/acresaquatics

Ponds and Water Features
Liners, fish, plants, food, treatments, pumps, fountains, filters... we have everything you need to create a beautiful pond for both fish and wildlife

DarlingInteriors

Made to Measure Curtains & Blinds - Bedspreads - Tracks & Poles - Fitting

Choosing new soft furnishings has never been simpler!

We bring an extensive range of exquisite fabrics from leading suppliers to choose from.

All types of blinds supplied & fitted motorized or hand operated.

For the finishing touch we can provide and fit beautifully crafted tracks and poles to complement any window including bays or curved.



Get in touch to arrange your FREE no obligation consultation!

t: 01373 672 359

e: info@darling-interiors.co.uk

w: www.darling-interiors.co.uk