

# The Bridge

July 2018

monthly magazine for the villages  
of Corsley and Chapmanslade



*Marvel at the Military Wives Choir, partake of Pimms and Cream Teas, cavort in the countryside with the Chicken Chasers, have a go at the charity pub quiz, listen to the Prof on packaging, there's lots to do in July...*



# Mendip Mowers

## Why Honda?

*There is a simple reason why you will see  
so many Honda products still hard at work  
after many years of service;  
they are built to last.*

## OFFERS AVAILABLE THROUGHOUT THE YEAR

- Mowers • Tillers • Brush cutters
- Blowers • Chainsaws
- Hedge trimmers

Barn Dried Logs Also Available



GARDEN MACHINERY SPECIALIST

SALES • SERVICE • PARTS

[www.mendipmowers.co.uk](http://www.mendipmowers.co.uk) 01373 832965

Unit 7, Green Farm Industrial Estate, Chapmanslade BA13 4JJ



# Frome Heating Specialists

## J L and M W Knight

**Heating and plumbing engineers  
specialising in:**

Oil and gas boiler servicing

Boiler replacement

Energy management

Pressurised hot water systems

Underfloor heating systems

Frome family business established 1964

Stavanger, Corsley, Nr Warminster, Wiltshire, BA12 7QL

# Call 01373 832578



199876

# The Bridge

monthly magazine for the villages of Corsley and Chapmanslade

## Articles

Please submit articles either by email to [viv.thomas146@btinternet.com](mailto:viv.thomas146@btinternet.com) or by hand (legible handwriting please!) and take them to the drop-off locations at Barbers Plant Centre, Chapmanslade, or Acres Supply Garden Centre, Corsley by the deadline.

News, reports, updates, thank you's, etc, from individuals or local organisations are free – the more the merrier – keep 'em coming!

## File types

Save your files as .doc – please don't send .docx files – I can't always open them successfully.

## Advertising

**Small ads** are £1 for each item whether 'For Sale' or 'Wanted'.

**Events/local organisation ads** (churches, clubs, playgroups, etc) are £2 per month for a boxed advert.

**Full page ads** cost £7.50, are subject to space availability and cannot be guaranteed,

If you are advertising, don't forget to take the fee – cash or cheque in a sealed envelope please, to either of the drop-off points (Barbers Plant Centre or Acres Supply).

**Please note: no cash, no advert!**

## Trade advertising

Please see information on the last page.

## In this issue...

**8 Bob's Bafflers**  
a cunning quiz

**14 Science**  
biology: changing the world

**18 Parish Council briefing**  
Corsley

**Seven Open Doors** **23**  
news from the pews

**Corsley WI** **28**  
news from the ladies

**News from the Nest** **31**  
fledgling fun

**35 Parish Council briefing**  
Chapmanslade

**39 Whitbourne Chapel**  
chapel colloquy

**46 Countryside matters**  
views from over the hedge

## Deadline

**Deadline for articles  
or adverts for the next  
issue of The Bridge is  
4pm 19th July**

**Please note that no  
items will be accepted  
after this date**

---

## July

### Tuesday 3rd

Village Coffee Morning - 10 am - 12 noon, Corsley  
Reading Room

### Thursday 5th

Chapmanslade Parish Council – 7.30 pm, Chapmanslade Village Hall

### Friday 6th

Charity Quiz Nigh (Cancer Research UK) – 7 pm, Royal Oak, Corsley

### Saturday 7th

Garage Sale – 10 am - 3 pm, 149 High Street, Chapmanslade

### Thursday 12th

Corsley WI – 7.30pm, Open Meeting Corsley Reading Room, “Alternative Packaging” by  
Prof. Nigel Brown

### Saturday 14th

Military Wives Choir Concert – 7 for 7.30 pm, St Margaret’s Church, Corsley  
A Night for Our Stars – 7 pm, Chapmanslade Village Hall

### Thursday 19th

Church and Community Coffee Morning – 10 am - 12 noon, Three Horseshoes  
Chapmanslade

### Saturday 21st

Corsley and Chapmanslade Churches – Pimms and Cream Teas – 2.30 pm to 5.30 pm,  
Job’s Mill, Crockerton

### Sunday 22nd

Chapmanslade Chicken Chasers – 10.30 am, the Three Horseshoes, Chapmanslade

### Tuesday 31st

Recycle even more plastics and cartons in your blue-lidded bin from today!

## August

### Thursday 2nd

Fun in the Sun FREE summer holiday multi-sports coaching for children aged 5 - 11  
3 - 4 pm, Corsley Memorial Playing Field

### Saturday 4th

Elizabethan Evening presents ‘The Hound of the Baskervilles’ – Manor Farm, Corsley



# Diary Dates

---

## **Sunday 5th**

Chapmanslade Cream Teas

## **Tuesday 7th**

Village Coffee Morning - 10 am - 12 noon, Corsley Reading Room

## **Thursday 9th**

Fun in the Sun FREE summer holiday multi-sports coaching for children aged 5 - 11  
3 - 4 pm, Corsley Memorial Playing Field

Corsley WI – 7.30pm, President's Supper Evening at 26 Birchwood Close

## **Thursday 16th**

Fun in the Sun FREE summer holiday multi-sports coaching for children aged 5 - 11  
3 - 4 pm, Corsley Memorial Playing Field

Church and Community Coffee Morning – 10 am - 12 noon, Three Horseshoes  
Chapmanslade

## **Thursday 23rd**

Fun in the Sun FREE summer holiday multi-sports coaching for children aged 5 - 11  
3 - 4 pm, Corsley Memorial Playing Field

## **Sunday 26th**

Songs of Praise followed by Cream Tea – 4.30 pm, Corsley Showfield

## **Bank Holiday Monday 28th**

Corsley Show

[www.  
corsleyshow.  
org.uk](http://www.corsleyshow.org.uk)

## **September**

### **Monday 3rd**

Corsley Parish Council Quarterly Meeting – 7.30 pm, Corsley Reading Room

### **Tuesday 4th**

Village Coffee Morning - 10 am - 12 noon, Corsley Reading Room

### **Thursday 13th**

Corsley WI - 7.30pm, Corsley Reading Room, 'From Womb to Tomb', Fiona Carruthers on the importance of meat in the diet

### **Thursday 20th**

Church and Community Coffee Morning – 10 am - 12 noon, Three Horseshoes  
Chapmanslade

Cinema Corsley – new season of films begins

# Chapmanslade Chicken Chasers

Following the end-of-spring evening stroll in June, the next Chapmanslade Chicken Chasers walk is planned for **Sunday 22nd July** at 10.30 am meeting at the Three Horseshoes.

As usual the walk will be around three miles and dogs are welcome. Stout shoes and long trousers recommended to avoid those nasty nettles!

For more information contact Jaimie on 07740 473725

## May Walk

*Another glorious day greeted the Chicken Chasers on their third walk around the footpaths and lanes of Chapmanslade.*

*A re-planned route to avoid fields of cows and their young calves took the fifteen-strong group through the last of the bluebells in Black Dog Woods and the buttercups and wild flowers in the fields near Corsley Mill.*

*The walk finished in the glorious sunshine of the garden at the Three Horseshoes with a well-earned lemonade for the young ones and cider for a few of the adults.*

## A Night For Our Stars

In Aid Of  
Julia's House Children's Hospice  
And  
Dorothy House Hospice

14th July 7pm  
Chapmanslade Village Hall

A live musical evening by young local performers in memory of a loving friend. All proceeds go to the charities who give their support to our loved ones in times of need

Tickets  
£5

Book in advance  
Limited spaces

Bar

Raffle

Live music!

Music from  
across the ages



Tickets from Georgia Lawrence:  
glawrence1904@gmail.com





# Pears Electricians

Nigel Charteris - BSc (Hons) M.I.E.T.



## Professional Local Electrician

A HIGH STANDARD OF WORK AT REASONABLE RATES

Part P registered with [www.napit.org.uk](http://www.napit.org.uk) - Testimonials and references available

**Faults & Troubleshooting • Repairs & Improvements**  
**Installation Condition Reports • Boiler Wiring**

[www.pearselectrical.co.uk](http://www.pearselectrical.co.uk)

**01985 213314 or 07717 534026**



# OAKLEY

## GARDEN MACHINERY

Grove Lane, Marston Trading Estate  
 Frome, BA11 4AT



**For Sales, Spares,  
 Workshop Service  
 and Repairs**

Hayter  
 Mountfield  
 Lawn King  
 Westwood  
 Stihl  
 Honda  
 Toro  
 Echo  
 Husqvarna  
 Shindalwa  
 Oregon  
 and more...

[www.oakleyfrome.co.uk](http://www.oakleyfrome.co.uk)

**01373 467712**

18a Bath Road  
 Warminster, BA12 8PD

**Julie Marshall**  
 Professional Hair Stylist

Telephone: 01985 300972

Mobile: 07540 635214

[juliemarshall66@blueyonder.co.uk](mailto:juliemarshall66@blueyonder.co.uk)

## STUNNING COASTAL VIEWS ON CORNISH COAST NEAR LOOE



Six bedrooms (sleeps 12)

Private access onto beach

Pets allowed

Top class facilities including wi-fi

Rent for week or even long weekend

Downstairs bedroom and shower room

**For more info: Sandy Parrish 01373 832522**

*Bride  
 by Design*

**Bridal gowns and accessories**

2 Silver Street  
 Warminster, BA12 8PS



Please contact us to  
 arrange an appointment

t. 01985 217216

[e. info@BridebyDesign.biz](mailto:info@BridebyDesign.biz)

[www.bridebydesign.biz](http://www.bridebydesign.biz)

# The **co-operative** funeralcare

- 24 hour service
- Free bereavement advice
- Pre-paid funeral plans

**WESTBURY** 48 Warminster Road, BA13 3PF  
**01373 858142**

**WARMINSTER** 3 George Street, BA12 8QA  
**01985 220105**

**FROME** 1 Nunney Rd, Frome BA11 4LA  
**01373 473426**



southern coop

## ORCHARD UPHOLSTERY

RE-UPHOLSTERY OF  
ANTIQUE AND MODERN  
FURNITURE

❖ FREE ESTIMATES ❖

COLLECTION AND  
DELIVERY SERVICE

Telephone Lesley  
01373 464870

## Sharon's Foot Clinic

SAC Dip FHPT SAC Dip FHPP



*Fully insured and highly trained*

For the professional treatment of:  
Corns · Callus · Cracked Heels  
Athletes Foot · Fungal Infections  
Thickened Nails · In-growing Nails  
Diabetic Foot Care · Verrucas  
Nail Cutting · Nail Reconstruction

Contact Sharon on  
**01373 836734 or 07728 200402**

Clinic appointments at  
**12 Sunny Hill, Nunney, BA11 4ND**

Home visits also available

# Corsley Tennis Club News



The Corsley Tennis Club held its Ladies Doubles Tournament on Sunday 3rd June at The Memorial Playing Field.

The matches were keenly contested by eight players with Jenny Bishop and Sue Newell emerging as winners with 12 points. Ann Walker and Diana Hale were chasing them hard with 11 points. All agreed that it was a most enjoyable event and the fine tea rounded the sunny afternoon off nicely. Thanks go to Jenny Bishop for organising the tournament.

The Mixed Doubles tournament is on Sunday 8th July commencing at 1pm – and spectators are welcome. I am pleased to report that we have picked up a few new members this year and some of them have made use of the opportunity to attend as a visitor at a fee of £2 for each of the first three occasions. After three visits, newcomers decide whether to join the club or not. Typically there is a lack of confidence when people haven't played for years but we soon convince them that

we're not all Wimbledon standard but members of a friendly club with mixed abilities looking to keep active. If you would like to have a go we can arrange for a group to make up a doubles game with you or just meet one of us to have an informal 'hit' to see how you feel – give us a ring!

The club's professional coach Jon Dilena. (07986 370080) is available for junior or adult coaching.

The club welcomes membership enquiries and reminds Corsley residents that junior membership is free. Juniors living outside Corsley pay a membership fee of £10. Membership Secretary Emma Fox 07512 009580.

Further information and a membership application form can be found on our website [www.corsley-tennis.uk](http://www.corsley-tennis.uk).

*Marlene Latchem*  
Publicity Secretary  
01373 832357

## Book your party at the Playing Field!

*Lots of space to play!*

**Pavilion with hall, pizza oven, barbecue, marquee/gazebo, kitchen, toilets and more. Very reasonable rates**

**CORSLEY MEMORIAL  
PLAYING FIELD**

Charity Number: 305497



Contact: [marion@nmc2.co.uk](mailto:marion@nmc2.co.uk)  
01373 832314 or 07796 544565



# Bob's bafflers

- 1 Which Royal couple lives at Bagshot Park in Surrey?
- 2 If you list all 50 US States in alphabetical order, which comes first?
- 3 If you list the current counties of England, which comes first?
- 4 When Charles Dickens died in 1870, which novel was left unfinished?
- 5 Which TV series first aired in 1992 is set in the village of Aidsfield?
- 6 Which musical featured the song 'Getting to know you'?
- 7 At which school was Hermione Granger a pupil 'from the age of eleven'?
- 8 Who is the Roman God of War?
- 9 Which disc jockey and presenter was known as 'Fluff'?
- 10 Rock, Stock, Collared and Turtle are varieties of which bird?
- 11 The adjective caprine refers to which animal?
- 12 In the fairy tale, why was the pea placed under '20 mattresses and 20 feather beds'?

*Answers on page 48*

## Charity Quiz Night

7pm, Friday 6th July  
Royal Oak, Corsley

£8 Per Person (includes a hot buffet)  
£3 per person (just quizzing)  
Teams maximum of 6



CANCER  
RESEARCH  
UK

**Book now!**  
**Call us on 01373 832238**

# UPVC REPAIRS WILTSHIRE.CO.UK

## FOR PROFESSIONAL WINDOW & DOOR REPAIRS

Are you having a problem with your UPVC windows or doors?

- ✓ Misted glass
- ✓ Broken or faulty window hinges
- ✓ Faulty locks
- ✓ Jammed windows or doors
- ✓ UPVC door adjustments
- ✓ Window and door handles

Call us – we are here to help

All work guaranteed

01373 430010 07795 143228 [www.upvcrepairswiltshire.co.uk](http://www.upvcrepairswiltshire.co.uk)

## the three horseshoes

Open daily from 10AM-11PM  
serving delicious home cooked food  
(12-3, 6-10 Mon-Sat. & all day Sun.)

Enjoy a refreshing drink in our beer garden  
with spectacular views of Longleat and Cley Hill,  
or indulge with one of our regular meal deals  
by the warm open fire on a bitter winter's day.

We organise monthly events,  
featuring live music, comedy + much more!

follow us on Facebook for more details



threehorseshoeschapmanslade



Fairwood Road, Dilton Marsh, Wilts BA13 4EL  
T: 01373 826792 E: [bookings@fairwoodlakes.com](mailto:bookings@fairwoodlakes.com)



- Café • Soft play • Fishing
- Outdoor play areas
- Luxury lakeside lodges
- Touring pitches

[www.fairwoodlakes.com](http://www.fairwoodlakes.com)



## YOGA CLASSES

Corsley Reading Room

Tuesdays 7-8.30 pm

Wednesdays 5.30-7 pm

(other classes also available)

Jackie Jasper

01373 832301 [yogawithjackiej@gmail.com](mailto:yogawithjackiej@gmail.com)



# The game's afoot Watson!

Join Holmes & Watson as they tramp around the moor looking into decidedly and desperately dodgy doggy doings. Doggedly dispatching dastardly, determined, desperadoes despite dangers, distractions, duplicity and downright dangerous dealings, dutifully and deftly dispatched.

This can only mean that the Hound of the Baskervilles is once more loose and so the games afoot!

This terrible tale of Talbots and the hellish hound and its dastardly desires to dispatch yet another of the Baskerville Clan will unfold before your very eyes

So dig out your tweeds, breeks, brogues and patriotic underwear, and join us on the wild moor lands of Corsley, at Manor Farm;  
Saturday 4th August 2018

## The Hound of the Baskervilles

...to be superbly enacted by the Illyria Outdoor Theatre company in the hauntingly, melancholy setting of Manor Farm, Corsley, of a late summers eve;

**Saturday 4th August 2018**

Prior to Messrs H & W mighty battle of wits unfolding before your eyes, our guests can avail themselves of a hearty repast (but book early – supper tickets are always limited) and thirst quenching offerings of great variety (and possibly quality) will be available at the fully licensed bar 'The Inn of the Cocked Leg'.

..and, if the pen is mightier than the sword, you will once again be entertained with a foreplay of no known equal anywhere in the civilised world.

Messrs Quill & Parchment are (thanks to the Governor of HMP Dartmoor and its early release program) at this very moment writing such a story as has never been equalled in all the liable courts of this land or beyond.

Ticket sales are moving along smartly, so don't be left out, give Claire a tinkle on 01373 832113 to secure yours.



**FUN IN THE  
SUN  
FREE for ages 5 - 11  
summer holiday multi-sports  
coaching  
Corsley Memorial Playing Field  
Thursdays, 15.00 - 16.30  
2, 9, 16 & 23 August**

Bring a registration form with you or register on the day. Forms available from [karlene.jammeh@wiltshire.gov.uk](mailto:karlene.jammeh@wiltshire.gov.uk)  
Tel: 01722 434437

Sports provided change on a week-by-week basis but will include tag rugby, cricket, football, dodgeball, tennis, rounders, athletics and team activities. Places will be allocated on a first-come-first served basis, and we suggest that children bring with them a hat and water bottle if it's sunny. In the event of wet weather please encourage children to bring along a waterproof coat.





**Shake off those pounds and  
dance yourself fit.**

Chapmanslade Village Hall  
Monday 7.30pm - 8.30pm

Longbridge Deverill Village Hall  
Thursday 7pm - 8pm

For all levels of fitness and  
NO experience needed.

For more information please contact  
Amy 07830 119032

## Busy Bees Pre-School Chapmanslade



For children aged 2-5 years  
Weekdays (term time only) from 8 am-5 pm

Please contact Kelly Williams to arrange a  
visit and a free trial session for your child  
Breakfast club and after-school club available  
(term time only)

Telephone 07749 257608  
[busybeespre-school@hotmail.co.uk](mailto:busybeespre-school@hotmail.co.uk)

## Jackdaw Plastering



Phone : 07504977650

Email : [andy@jackdawplastering.com](mailto:andy@jackdawplastering.com)

Web : [www.jackdawplastering.com](http://www.jackdawplastering.com)

**\*Qualified \*Insured \*Clean \*Reliable**

For your  
Heating Oil Supplies  
contact

## KINCH FUELS

at their  
local depot in  
Devizes, Wiltshire

Telephone 01380 727102

*The company you and  
your home will warm to*



## LUXURY PRIVATE CAR HIRE

A locally based, door-to-door, personal  
service for up to six passengers in  
air conditioned comfort  
AIRPORTS • SEAPORTS • ANYWHERE

For bookings, please call  
01985 840088      07903 307734

## WEST COUNTRY SWEEP

Domestic & Commercial Chimney Services

**Andrew Leigh**

07545 822109

[westcountrysweep@gmail.com](mailto:westcountrysweep@gmail.com)



## Kevin O'Mahony

Quality Painter and Decorator

Internal and external painting

Artexing

Wallpapering

Coving

Hand painted kitchen units

07724 349447 or 01985 301197

email kevo7743@googlemail.com

www.thewarminsterpainter.co.uk

*Keep active with physiotherapy*

**Alison Rossiter MCSP HPC**

***Chartered Physiotherapist***

30 years experience in physiotherapy specialising in the treatment of muscle and joint problems.

Helping people to improve their health and fitness through treatment, exercise and advice.

Home visits can be arranged.

Daytime and evening appointments available.

*If you need help please contact:*

**Beckington Physiotherapy 01373 831483**

**Email: arossiterphysio@gmail.com**

**www.beckingtonphysio.co.uk**



**Downlands**  
TREE SURGERY

For Expert Tree Care

Telephone Jon Burgess on

**01985 214320**

Skilled pruning

Tree felling

Stump removal

Qualified and insured

**Free tree health  
survey and quotes**

**DAVID EDMUNDS & CO**  
ACCOUNTANTS & TAX CONSULTANTS

*Specialists in the self-employed, small and  
medium business and self assessment.*

*Preparation of accounts, VAT, PAYE,  
income tax and corporation tax returns.*

*Personal, friendly service*

*Evening appointments by arrangement*

Telephone 01225 334447

Home 01373 832430



**First Aid & Compliance  
Training Ltd**

**Training for the workplace and home.**

Wide range of accredited

- First Aid • Health & Safety • Fire Safety
- & Food Safety courses

**www.factltd.co.uk**

**T: 01985 302562**

## Biology: changing the world

# What's happening to the bees?

Bees are essential to the pollination of many crops but are they under threat?



Over the last few years we have had warnings about the possible loss of bees and the catastrophic effect that this could have on world food supplies. In 2006 the first cases of Colony Collapse Disorder (CCD) were identified in the US. In CCD the adult honeybees simply disappear, leaving the queen, and immature bees with plenty of food. However, worker bees are essential to maintain the hive and the colony eventually dies. In some cases in the US, beekeepers lost up to 90% of their hives.

CCD is apparently due to a combination of stressors on the colony. These include the invasive Varroa mite, which is a pest of honeybees, new diseases such as the gut parasite Nosema, stress due to

transportation when hives are moved to another site, or poor nutrition. Poisoning was originally eliminated as a cause because few dead bees are found outside the hive in CCD, whereas many are found if a hive is poisoned.

CCD is just one factor that affects bees, and it is not only honeybees that are under threat. There is a reduction in the numbers of wild bees,

and some species (of the 20,000 or so that exist) are in danger of extinction. Bee scientists agree that habitat loss is the major cause in the reduction in bee numbers in the UK, as there are fewer hay meadows and wild flowers in the countryside. Transporting honeybees so that they can pollinate different crops also spreads bee diseases and pests. Bees are moved around the world, so they are exposed to diseases to which they have no natural resistance, and disease is a second cause in the decline of bees. The third is pesticides. Some of the pests of crops are insects, so insecticides are used. Unfortunately, many insecticides are indiscriminate and target all insects, not just the pests.

A recent focus has been on the neonicotinoids. These insecticides are related to nicotine, and become disseminated through the plant, including the pollen and nectar. Neonicotinoids were introduced in the 1980s and widely used because they are less toxic to birds and mammals, but they are neurotoxins and have been reported to attack the brains of bees and other insects. However, other studies have shown no effect of neonicotinoids on bees. The scientific papers produced are often small-scale studies that have insufficient data to be conclusive. A tool called meta-analysis can be used to take a large number of separate studies, correct for different ways the studies were conducted, and then draw conclusions from the combined data. Meta-analysis has recently revealed that neonicotinoids negatively affect the abundance, behaviour, reproduction and survival of bees.

In April this year the EU agreed to ban the use of neonicotinoids in fields, allowing their use only in closed greenhouses. Although this has generated significant scientific debate, with some scientists arguing that alternative insecticides may be more damaging, it may be a necessary step in protecting the bees. We can also help in a small way by planting bee-friendly flowers and not using insecticides in our gardens.

Nigel Brown is happy to receive comments, questions and, especially, ideas for future articles at [nigelbrown48@gmail.com](mailto:nigelbrown48@gmail.com)

## Chapmanslade Parish Plan

### *Village Voice*

Residents of Chapmanslade, you can contribute to the future of your village by helping us write our Parish Plan. This will give an overview of the village and state how we want it to be in five years' time.

You don't need great expertise, but if you would like to join a small group putting information together under one of the headings below, please contact [nigelbrown48@gmail.com](mailto:nigelbrown48@gmail.com), or leave a note for Nigel Brown in the Three Horseshoes, as soon as possible indicating which heading(s).

- The Parish Profile
- Roads, Pavements, Traffic and Transport
- The Natural Environment
- Facilities and Utilities
- Housing and Development
- Education
- Social and Community Issues

## Biology Week 2018

**Emeritus Professor Nigel Brown will run a biology Q&A session on Monday 8th and Thursday 11th October in the Three Horseshoes, Chapmanslade to celebrate Biology Week 2018**

# ALLSOP CARPETS & FLOORING

DOMESTIC ♦ COMMERCIAL ♦ INDUSTRIAL

Christchurch Street West, Frome BA11 1EB

TEL: 01373 463866 MOBILE: 07887 953014

[www.allsopcarpets.co.uk](http://www.allsopcarpets.co.uk)

## Chapmanslade Village Hall

Can be hired for all your functions:  
parties, weddings, meetings, classes, etc

For hiring information, phone  
Ken Davies 01373 832034 or email  
[kennethdavies1949@gmail.com](mailto:kennethdavies1949@gmail.com)

## KEYVOLUTION

Locksmith and  
Carpentry Services  
serving the Wiltshire Area

Warminster based company offering locksmith and carpentry.  
Police cleared, reliable and honest service.  
Any other quote beaten.

- BS3621 lock upgrades for house insurance approval
- Garage doors, locks and running gear
- Lock repairs – specialising in Chubb mortice locks
- Upvc double-glazed door and window locks fitted – even old ones!
- Door or window locks opened destructively or non-destructively (indemnity required for these services)
- Digital code locks supplied and fitted
- All types of carpentry work – mostly 2nd fix and maintenance

Check out my website

[www.keyvolution.co.uk](http://www.keyvolution.co.uk)



or call Ben on 07748 214799 or 01985 219799

## White Horse Windows

Windows, Doors, Conservatories and  
more...

Local Company, Exceptional Standards  
10 year guarantee

Windows Fascia & Guttering  
Doors Conservatories

CERTASS Registered

For a Free Quotation call Ryan on  
07909 441442 or 01373 302594

## Mole Catcher

01373836350

07512681111

No Mole

No Fee



## Hypnotherapy for you!

Solution Focused Hypnotherapy is a safe, practical  
therapy and can help you to:

- Feel better about yourself
- Achieve work, play, lifestyle balance
- Improve many areas of your life

Fiona 07801 436633

[fiona@balancehypnotherapy.co.uk](mailto:fiona@balancehypnotherapy.co.uk)

[www.balancehypnotherapy.co.uk](http://www.balancehypnotherapy.co.uk)

Balance  
Hypnotherapy  
Solution Focused Hypnotherapy



[nickcranston@acertreesurgeons.co.uk](mailto:nickcranston@acertreesurgeons.co.uk)

[www.acertreesurgeons.co.uk](http://www.acertreesurgeons.co.uk)

01373 832026 or 07590 986261

85 High Street, Chapmanslade

- FREE advice and quotes from a friendly, professional and accredited company fully insured and Council approved
- We are highly skilled and qualified to undertake all tree work from fruit tree pruning to technical dismantling of huge tree structures near buildings as well as hedge trimming and care.
- We also sell logs!

# BARTERS PLANT CENTRE

**'Passionate about Plants'**

Shrubs ♦ Perennials ♦ Trees ♦ Roses ♦ Conifers  
Climbers ♦ Fruit Trees ♦ Hedging ♦ Soft Fruit ♦ Seeds  
Bulbs ♦ Basket Plants ♦ Bedding ♦ Vegetable Plants  
Christmas Trees ♦ Holly Wreaths  
National Garden Gift Tokens



## Opening Hours

Mon to Sat	9 - 5	(March to October)
Mon to Sat	9 - 4.30	(November to February)
Sun	10 - 4	(March to June + December)

Just off A36 in Chapmanslade, Wilts, BA13 4AL  
01373 832694 [www.barters.co.uk](http://www.barters.co.uk)



## JONATHAN CORP

Painter and Decorator  
General House Maintenance  
Sturford Mead Farm, Corsley  
Warminster, Wiltshire, BA12 7QU  
01373 832213

## Postlebury News R Gould – Newsagent

All papers and magazines  
Home delivery service

01749 850556 07979 452677

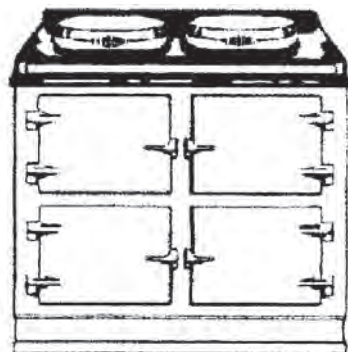


## *T A P Services*

*Telephone 01373 463106*

*[tapservices@btinternet.com](mailto:tapservices@btinternet.com)*

*Authorised Stanley Service Agent  
Oil Range Cooker & Oil Boiler Servicing*



## *Range Cooker Servicing*

**Corsley Parish Council**

# Parish Council Briefing

Chairman, Neil Britten, rounds up the PC's activity in June

The Parish Council (PC) met once in June for one of the statutory quarterly meetings, with most of the regular items on the agenda, planning applications, streetscene and Old School Playing Field (OSPF) development, plus an update on GDPR and approval of the annual formal financial reports.

## **Planning applications**

**18/04155/FUL - Removal of Condition 7 to allow Lavender Lodge, No.. 40 Temple, to be used as a permanent separate residency.**

This is a re-application of a previous identical one, which was refused by Wiltshire Council on the grounds that it breached planning policy, and for which the PC had registered an objection on the grounds that there was "no evidence presented to suggest that its continued use as a commercial holiday let was no longer viable". The new application was reinforced by a consultant's letter which argued that national planning policy supporting "unrestricted residential use of redundant buildings outside settlement boundaries as a matter of principle" and that this policy should transcend Wiltshire's core planning policies.

The PC concluded that the Lavender Lodge could not be classified as a 'redundant' building and re-affirmed its objection on the same grounds as before.

**18/04162/FUL- Erection of a single storey extension (garden room) on the South West elevation of the old farm house at Chipp's Farm, Cleyhill Lane**

The PC registered no objection.

## **Streetscene**

### **Whitbourne Springs/Longhedge**

Detailed design work for the Whitbourne Springs junction is awaited after which the detailed costs will be worked out. The PC will then have to consider how best to arrange funding. If promises are fulfilled, the Longhedge warning sign will have been erected by the time this Bridge is published.

### **A362 safety measures**

Simon Jasper's safety dossier (mentioned in last month's edition of The Bridge) for the A362 at Corsley Heath has been accepted by the CAT(G) and the scope of work undertaken will depend on how much can be accommodated within the CAT(G)'s very meagre budget and that which can be "piggybacked" on to the Bay Tree budget.

### **A362 bollard**

The missing bollard at the western end of Corsley Heath is in the Highways programme, but, so far, with no committed date for replacement.

### **Old School Playing Field (OSPF)**

The OSPF continues to provoke debate in the PC and has been the subject of much

discussion over the years in attempts to establish the best long-term means of looking after what is a key village asset. At the end of last year it was recognised by the PC that the original plantation of trees in the Jubilee year had not thrived as hoped and there was a need for replenishment planting. Mowing the grass had been a cost to the PC, but a voluntary mowing rota was put in place in 2016 and December 2017 signalled the end of the lease requirement to maintain a games pitch on the OSPF.

In January this year the PC received a detailed proposal from a village team to develop the OSPF into a combination of a wildflower meadow and nature trail area with additional tree planting and picnic areas. This was supplemented in May by another, separate, proposal to plant an orchard arboretum on the OSPF, using traditional trees including the Corsley Pippin and in the background is a third aspiration to plant 17 oak trees in commemoration of the Corsley fallen of WW1.

In last month's edition of The Bridge I reported decisions which had been taken at the 14th May PC meeting. The Wildflower Meadow proposal was again debated on 18th June since the proposal had been modified to be a "no cost to the PC" offer. It was accepted in principle, but there remain misgivings in some areas and final approval to go ahead will be subject to satisfactory responses to several areas of perceived risk. Discussions are now underway to clarify these issues and also to find a suitable compromise to integrate the three schemes, with a view to making a final decision before the tree planting season in the Autumn.

A quotation for the groundworks associated with the new access to the OSPF has been accepted and it is anticipated that this work will be completed by September.

## GDPR

Policies have been drafted to cover data protection and privacy notices and a general scheme developed for the management of the small amount of subject data held. The latter will include specific email accounts/address books for PC communications and a separate secure storage "cloud" type site for PC communications and papers. To this end please note the new email address at the end of this brief.

## Neighbourhood Watch

There have been several reports in the last week or so of sheds and outbuildings being broken into or tampered with. Please ensure that such buildings are kept locked and, if possible, any valuable items are further secured inside the sheds. In one of the incidents the thieves took out the locks of the door but were unable to get away with any machinery because it was chained to the ground. It should also be noted that the latter incident was the second attempt at the same site this year.

## Dates of next meetings

Quarterly Meeting	3 September
Quarterly Meeting	3 December
	(Precept setting)

All meetings start at 7.30pm and are in the lower Reading Room.

Please note that a planning application for Lane End Cottage (extension and conversion of existing garage to provide holiday let and gym to existing dwelling) was received too late for the 18th June meeting, but there will be an occasional meeting in early July to discuss this one. See village noticeboards for details.

Neil Britten  
Chairman

[corsleypc-dnb@gmail.com](mailto:corsleypc-dnb@gmail.com)  
01373 832515/07810 764714



# Clean-it

Recommended by



Carpet and upholstery cleaning specialist

01373 462059 07779 247961 [www.clean-it.biz](http://www.clean-it.biz)

Home ~ Private ~ Lettings

15%  
Minimum  
Savings

**Garston**  
Veterinary Group



Spread the cost of your  
pet's preventative  
healthcare into affordable  
monthly payments

Our Wellness Plan has been specifically designed so that your pet receives all of the essential vaccinations and parasite treatments and also a whole range of additional benefits to help ensure that they remain in the best possible health.

Cats £10.30  
per month

Dogs from £12.50  
per month \*

\*please contact one of the surgeries for specific prices for your dog. Prices are based on adult weight.

[wellness@garstonvets.co.uk](mailto:wellness@garstonvets.co.uk)

Frome	Melksham	Trowbridge	Warmminster	Westbury
01373 452225	01225 617779	01225 754021	01985 213350	01373 301448



[www.garstonvets.co.uk](http://www.garstonvets.co.uk)



Domestic Appliance Sales and Repair Service

## Domesticare

21 Keyford, Frome

[www.domesticarefrome.co.uk](http://www.domesticarefrome.co.uk)



01373 467351

## Childminder

Ofsted registered

Full and part time. Before and after school  
Holiday spaces available

Pick-up and drop-off offered

Call 01373 832854 or 07883 025476  
[d.m.rawlings@outlook.com](mailto:d.m.rawlings@outlook.com)

**JERRY RAYNER** :  
boiler maintenance :

01985 841461 or 07775 755981

FOR SERVICING AND BREAKDOWN  
OF OIL BOILERS  
also AGA and RAYBURN

- Competitive rates
- Friendly, helpful and efficient
- Call now for a quote

## Pippa's Pet Care

Dog Walking · Cat Sitting  
Small Animal Care

07745 482187 01373 839074

[Pippaflack@icloud.com](mailto:Pippaflack@icloud.com)

Facebook/Pippa's Pet Care

## DRIVE IN AND PICK YOUR OWN FIREWOOD

Woodchip, Mulch,  
Hardwood Logs,  
Softwood Logs,  
Kindling,

House Coal, Smokeless Coal,  
*Delivery available*



Mon to Fri: 7.30am - 4.15pm

Closed on Sundays & Bank Holidays

Open Saturdays from Sep-Mar only until 12 noon

01985 213507 [www.longleat.co.uk/forestry](http://www.longleat.co.uk/forestry)

5% discount for tenants of Longleat Estate



**LONGLEAT  
FORESTRY**

**WARMINSTER  
MILITARY WIVES CHOIR  
AT  
ST MARGARET'S CHURCH  
CORSLEY  
ON SATURDAY 14<sup>th</sup> JULY  
at 7.30pm**

**Come and enjoy a wide mix of popular music  
from one of the top UK choirs originally  
started by Gareth Malone on BBC TV**

**Refreshments at Manor Farm Barn**

**Tickets £12.50 Available from:  
Members of the Rotary Club of Frome  
Corsley and Chapmanslade PCC members  
Barthers Farm Plant Centre Chapmanslade  
Acres Supply Garden Centre Corsley  
Ian Buick 01373 832318 Chris Good 01373 822433**

# NOTEBOOKS2

Desktop PC - Laptop - Smartphone - Tablet

Apple - Macbook Pro / Air - iMac - iPhone  
iPad - Mac Mini

Repairs / Upgrades / Accessories

Notebooks 2 Go / Tech Repair  
51 Haynes Road, Westbury, BA13 3HD

Tel - 01373 865400

Email - [support@notebooks2go.co.uk](mailto:support@notebooks2go.co.uk)

## Cross Keys

Community Free House

Lyes Green, Corsley, BA12 7PB

Bar Open all day!

Food

Monday to Saturday

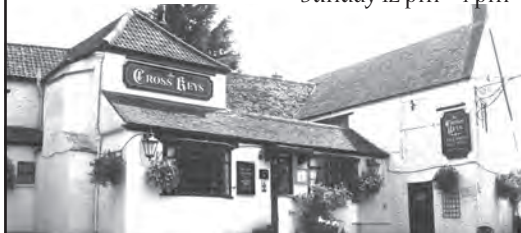
11 am - 11 pm

Sunday 11 am - 10 pm

Monday to Saturday

12 pm - 2.30 pm and  
6 pm - 9 pm

Sunday 12 pm - 4 pm



**01373 832406**

[www.crosskeyscorsley.co.uk](http://www.crosskeyscorsley.co.uk)

Facebook @CrossKeysInnCorsley

## Corsley Tennis Club



New members welcome –  
all ages, all abilities

Three hard courts available all year

Weekly junior coaching available

Low subscriptions

Contact either

Emma Fox 07512 009580

Sue Newell 01373 825560

[www.corsley-tennis.uk](http://www.corsley-tennis.uk)

## Little Cuckoo's Pre-School

Lyes Green, Corsley, BA12 7QH

Friendly, dedicated pre-school in the heart of the  
countryside for children aged 2-5 years

Monday, Wednesday, Thursday and Friday  
9 am - 3 pm during term-times

We accept 2-year-old funding in  
accordance with Wiltshire Council guidelines

Mother and Toddler group Tuesday mornings  
10 am - 11.30 am during term-times

**SESSIONS AVAILABLE NOW**

Speak to Hayley McMahon

Pre-School Manager on 01373 832298

Find us on facebook or visit [www.littlecuckoos.co.uk](http://www.littlecuckoos.co.uk)

**A free trial session is available**

Registered Charity Number 1064800



**CHRIS SEVIOUR**  
Building Services

**07894 708949**

[cmseviour@gmail.com](mailto:cmseviour@gmail.com)

Roofing, Loft conversions,  
Extensions, Plastering,  
Natural stonework



## S B Services



Contact Sean

**07828 671566**

*For your garden maintenance  
and home improvements*

# Seven Open Doors

Dear Friends,

As I write this letter July is fast approaching and we will all be delighted to welcome Pauline back into the fold on July 1st from her three months sabbatical.

During the past three months our Parish Churches have continued to be active, welcoming new families through Baptism, young couples through the celebrations of their weddings and by supporting families in the testing times of bereavement, through funeral services. Alongside all of this our weekly services have continued to run with the help and assistance of retired clergy and Lay Worship Leaders. So, despite the fact that we are told that our rural churches are struggling to survive there seems to be plenty of life and activity here in our Benefice even though sadly, our weekly church numbers don't always reflect this.

The pressures of family life today and weekend family commitments are the main reasons we hear which make it difficult for families to attend the Sunday service. But, as many of you will be aware, church is not confined to just a Sunday service. Being a Christian is about worshipping God and serving others in His name every day in every way and our Church activities continue throughout the week, thanks to the many volunteers who help with pastoral care, study groups or who go into our schools to help with the Christian assemblies, not forgetting all those who serve on the PCC's to keep our church buildings in order and look after the day to day running of Church life.

As a Church we are always looking for new ways to be welcoming and accessible to all, especially when it comes to encouraging the younger members of our parishes to join us. If our churches are to continue to grow in the future, in whatever form, then we need YOU to be on board. If you have had your children baptised, ask yourself why you made this decision. Don't we owe it to our children to help them understand what being a member of the world-wide church really means? The church is shaped by those who use it through each generation. This is now YOUR opportunity to shape for the future.

In September we are going to invite parents and children, to come and explore more about their Christian church through new confirmation classes. This is an opportunity for all who feel they have lost touch and to reaffirm the commitment we made to God through our baptisms. If you would like to join us or would like more information about this new children/parent confirmation course, please get in touch with Rev. Pauline Reid 01985 841290.

With love and prayers  
Reverend Di Britten

# July Church Diary

## Sunday 1st July: Fifth Sunday after Trinity

8am at St Mary the Virgin, Kingston Deverill: 1662 Holy Communion

9.30am at St Margaret's, Corsley: Eucharist

10.30am at St Peter & St Paul's, Longbridge Deverill: Morning Worship



## Sunday 8th July: Sixth Sunday after Trinity

9.30am at St Philip & St James', Chapmanslade: Family Holy Communion

10.30am at St Mary the Virgin, Kingston Deverill: Eucharist

11am at St Margaret of Antioch, Corsley: 1662 BCP Matins



## Saturday 14th July

7.30pm at St Margaret of Antioch, Corsley

Military Wives Choir



## Sunday 15th July: Seventh Sunday after Trinity

10.30am at St Michael the Archangel, Brixton Deverill: Eucharist

10.30am at St Margaret's, Corsley: Family Worship

11.15am at St John the Baptist, Horningsham: Village Reunion Service



## Thursday 19th July

10am to 12pm at the Three Horseshoes, Chapmanslade

Church & Community Coffee Morning



## Saturday 21st July

2.30pm to 5.30pm at Job's Mill, Crockerton

Cream Teas and Pimms



## Sunday 22nd June: Mary Magdelene

9.30am at St Philip & St James', Chapmanslade: Eucharist

10.30am at St Peter & St Paul, Longbridge: Eucharist

**Thursday 26th July**  
**7.30pm at 5 Brimhill Rise, Chapmanslade**  
**Parochial Church Council**



**Sunday 29th July: Ninth Sunday after Trinity**  
**10.30am at St Margaret of Antioch, Corsley: Benefice Eucharist**



**Sunday 5th August: Tenth Sunday after Trinity**  
**8am at St Michael the Archangel, Brixton Deverill: 1662 Holy Communion**  
**9.30am at St Margaret's, Corsley: Eucharist**  
**10.30am at St Peter & St Paul's, Longbridge Deverill: Morning Worship**

---

## **Fundraising**

On 10th June our church Parish played an active role in the Chapmanslade village Fables and Fairy Tales Explorer Trail. The church in Chapmanslade was buzzing with young people and their families from 11am. Refreshments were available at the church. The event will benefit four local organisations including the church Parish and the School and Busy Bees.

On the 14th July St Margaret's will be hosting a concert by the Military Wives Choir with the proceeds being shared between the church, Frome Rotary and the Choir. Tickets cost £12.50 and are available from members of the Rotary Club, PCC members, Barbers Farm and Acres Supply. Please see advert elsewhere in this edition of The Bridge.

On Saturday 21st July we will be returning to the delightful Job's Mill by kind invitation of Ian and Lady Sylvi McQuiston for an afternoon of Pimms and cream teas. Tickets cost £7.50 for entrance with a cream tea and £3 for a glass of Pimms. Please see advert elsewhere in this edition of The Bridge.

We will of course have our usual stall at the Corsley Show on August Bank Holiday Monday. The day before the Show at 4.30pm we shall be holding a Songs of Praise service at the Showground to be followed by a cream tea!

## **Foundation Governor at Chapmanslade School**

We currently have a vacancy for a Foundation Governor at the school. If you are interested in this important role please contact Phil Jefferson.

## **Congratulations**

We congratulate the following four couples on their marriages this month: Samuel White and Helen George at Kingston Deverill on 2nd June; Nikolas Blagdon and Deborah Young at Longbridge Deverill on 9th June; Nicholas Webber and Polly Wiltshire at Kingston Deverill on 14th June; Peter Baker and Cheryl Goddard at Brixton Deverill on 25th June.

## Parish Contacts

Rural Dean	Rev Pauline Reid revpauline@btinternet.com	01985 841290
Lay Pastoral Assistants	Richard Dean Barbara Hughes Claire Tanner	01373 832594 01373 832273 01985 218099
Pastoral Visitor	Alan Hopkinson	01373 832393
Churchwardens		
St Philip & St James'	Ian Buick	01373 832318
St Margaret's	John Helliar	01373 832803
Deputy Churchwardens		
St Margaret's	Currently vacant	
St Mary's	Harcourt Gough	01373 832039
St Philip & St James'	Janet Aylesbury	01373 832752
PCC Secretary	Phil Jefferson	01373 832845
PCC Minute Secretary	Sue Fear	01373 832074
PCC Treasurer	Keith Muston	01373 832755
Planned Giving Officer	Judith Helliar	01373 832803
Choir Leaders	Marion Muston Claire Tanner	01373 832755 01985 218099
Tower Captain	Marion Moldon	01373 832672
Electoral Roll	Di Britten	01373 832515
50/50 Club	Neil Britten	01373 832515
Benefice Administrator and Safeguarding Officer	Marion Muston cleyhillchurches@gmail.com	01373 839026 01373 832755
Time to Think Home Group	Phil Jefferson	01373 832845
After Alpha Home Group	Richard Dean	01373 832594
Light Bites Lunches	Maureen Willcox	01373 832171
Benefice Webmaster	Ian Buick	01373 832318

Copy for Seven Open Doors should be sent to Keith Muston at  
themustons@btinternet.com subject 7ODs or phone 01373 832755.

If you would like to receive weekly news of Church events and activities, please  
send your email address to the above, with subject 'Through the Open Doors' or  
download a pdf from the 'churches' pages at [www.corsleyandthebridge.co.uk](http://www.corsleyandthebridge.co.uk)

Expert repairs for  
PCs & Laptops  
Macs  
iPads  
Tablets



Frometech

Tuition available  
Macs, PCs and iPads

Take the stress out of IT  
Call Today!

Security Review of  
your computer

01373 470170  
[www.frometech.co.uk](http://www.frometech.co.uk)

### Qualified & Experienced Counsellor

**Lisa Adams Dip.Couns. Reg.BPC**

Weekly sessions offered for adults on an open-ended or short-term basis according to individual requirements

**Tel: 07904 843122**

**email: [lisaadams.corsley@gmail.com](mailto:lisaadams.corsley@gmail.com)**

### Ski Apartment – French Alps

Ski in/ski out – sleeps 6

**Well equipped – immaculate condition**

For more information or to book online visit:

**w.** [www.ski-les-cimes.co.uk](http://www.ski-les-cimes.co.uk)

**f.** [facebook.com/ski.les.cimes](https://facebook.com/ski.les.cimes)

**e.** [lesleygolledge@gmail.com](mailto:lesleygolledge@gmail.com)

**t.** 01373 832533

## npv plumbing & heating

Installation • Servicing • Repairs

Bathroom and tiling specialists

All plumbing and heating work undertaken

Our fully qualified plumbers offer all general plumbing services from boilers to bathrooms. We will gladly advise clients on the most suitable products for their property – be it heating systems, boilers, radiators, bathrooms or showers.

07738 940355

[www.plumbersfrome.co.uk](http://www.plumbersfrome.co.uk)

## Hypnotherapy

If you need help with:

Anxiety  
Depression  
Phobias (such as flying or spiders)  
Panic attacks  
Relaxation  
Weight management  
Smoking cessation  
Natural childbirth  
Confidence  
Public speaking  
Exam nerves  
and much, much more...

Call ANJI HOLLAND on  
07944 647 978 / 01373 832 898  
to enquire or just for a chat

[www.hollandhypnotherapy.com](http://www.hollandhypnotherapy.com)

With practices in Chapmanslade and Bath

I am a member of the National Council for Hypnotherapists  
and am bound by their code of practice and ethics

**Corsley WI**

# June news

Carol Seward rounds up the June meeting and announces some forthcoming events



At the June meeting of Corsley WI, Fiona Cordell gave a talk entitled 'Starting My Lavender Business'. 25 years ago Fiona was captivated by a lavender farm on Jersey. Now her dream of starting her own lavender business has become a reality with the planting of the first tiny lavender plants at Whitbourne Farm in 2-15. It takes another three years for the plants to be ready for harvesting; every stage is carried out by hand before the flowers are sent away for distilling and the oil brought back to be used in the production of all the items in the range, which includes everything from bath fizzers to shaving cream. Fiona explained that she needs to grow several different varieties of English and French lavender as each type has different properties. Some produce better oil, some a stronger scent and some hold their colour for longer.

A great deal of research went into financial planning, soil testing, market research, planning a website, designing a logo and creating the packaging and many other aspects of starting a business. Fiona's training as an accountant has been very useful as has her background in farming, from childhood to the present day. Whitbourne Farm Lavender products are on sale through local stockists including Lady Bath's shop at Longleat and Fiona has been invited to various fairs and other events. Four years on and Fiona said she

now feels the venture is a success. Fiona had brought items from across the range and once the meeting had closed, members were delighted to be able to buy the prettily packaged bottles of bath foam, hand and body lotion, hand gel and other products which were so temptingly displayed. The vote of thanks was given by Val Bembow.

The competition for my favourite perfume bottle was won by Elisabeth Irving, second Alice Helliar and third Annie Campbell.

At the NFWI AGM in June, members voted overwhelmingly in support of the resolution on mental health matters.

The Mystery Trip by coach on Wednesday 12th September has unfortunately been cancelled due to lack of support. Future Federation events include a workshop on Dorset buttons, a dance day and an afternoon of entertainment with the Ogmores Valley Welsh Choir. Full details are available at the meetings. New members are always very welcome.

'Alternative Packaging' will be the subject of the talk by Emeritus Professor Nigel Brown at the meeting, which is open to visitors, on Thursday 12th July at 7.30pm at the Corsley Reading Room.

Are you new to the area? Don't know anyone? Come and make friends at our WI meetings, held at the Corsley Reading

Room on the second Thursday each month at 7.30pm. If you need a lift or would like someone to come with you, please phone Carol Seward on 01373 832446 or email [carol.seward@talktalk.net](mailto:carol.seward@talktalk.net) for details and any other information about Corsley WI.

Can you play skittles or scrabble, or would like to learn? We are looking for new WI team members, so please contact us if you would be interested. For information about the Bridge Club and Lunch Club, please ring Pauline Scott on 01985 215760.

## Asian Hornet

A highly aggressive predator of native insects, the Asian Hornet (Yellow-Legged Hornet) poses a significant threat to honey bees and other pollinators.

Introduced into France in 2004 where it has spread rapidly, there have been confirmed sightings in Gloucestershire in 2016 and in North Devon in 2017. There's a distinct possibility of introduction into the UK through soil on imported plants, cut flowers, fruit, garden items (furniture/plant pots), freight containers or

in/on untreated timber. The possibility that they could fly across the English Channel has not been ruled out.

The Asian Hornet is not easily confused with any other species of hornet; they have a black or dark brown velvet body, dark abdomen and yellow-tipped legs. They are also smaller than the native hornet.

Asian hornet nests should not be disturbed as they are very aggressive. If you suspect you've found a nest, report it (with photo if possible) to [alertnonnative@ceh.ac.uk](mailto:alertnonnative@ceh.ac.uk)

**Great news – from 30 July you'll be able to recycle even more plastics and cartons in your blue lidded bin!**



[www.wiltshire.gov.uk](http://www.wiltshire.gov.uk)

Please rinse and squash your recycling

Wiltshire Council  
Where everybody matters

# Chapmanslade Motor Services

**Vehicle repair  
and servicing**

**Brake  
specialist**

**MOT preparation  
and repairs**



**Batteries  
Exhausts  
Tyres**



*Quality service at competitive rates*

**FREE** ~ wheel balancing and tracking with new tyres

**FREE** ~ courtesy car

Electronic diagnostics available – most makes covered

Green Farm Industrial Estate, Chapmanslade

01373 832188 or 07711 256927





**01373  
455911**

**CLEANING & MAINTENANCE 2000 LTD**

**OUR SERVICES INCLUDE**

- Domestic Cleaning
- Commercial Cleaning
- Upholstery Cleaning
  - Carpet Cleaning
- One off Spring Cleans
- Garden Maintenance
  - Home & Garden Clearance

 [www.busybees2000.co.uk](http://www.busybees2000.co.uk)   
[info@busybees2000.co.uk](mailto:info@busybees2000.co.uk)

**JOHN E S JONES  
& SON LTD**

**GENERAL  
BUILDER**



Carpentry, painting and  
decorating, extensions, uPVC,  
fascias and gutters, fencing,  
decking and patios

**Please call**

01373 832600

07795 177920

07810 646335



# News from the Nest

Welcome to this month's news from  
**Corsley Cuckoo's PreSchool** in Lyes Green, Corsley.

Little Cuckoos is gearing up for an exciting final term at the pre-school. With a summer trip to Avon Valley Country Park and the annual Sports Day taking place on the pre-school grounds in July, the children will be enjoying lots of time outdoors exploring nature and staying active. A new water play feature has arrived at the pre-school, and there are plenty of fun activities taking place during the week for children to play and learn in the wonderful Willow Wonderland field.

The pre-school is delighted to welcome new members of the community to its committee this term. The Little Cuckoos committee is essential to the everyday running of the pre-school, and every member plays a vital role in ensuring the future development of the organisation.

Little Cuckoos is always happy to welcome new members to its committee, whether they're parents from the pre-school or local individuals who have time to spare and keen to make a difference to this wonderful village setting.

## **LITTLE CUCKOOS PRE-SCHOOL IS RECRUITING FOR A NEW TREASURER**

Would you like to:

- Work as a part of a team of volunteers?
- Have a real say in how a local pre-school is run?
- Meet other parents/carers and make new friends?
- Gain fantastic experience and put your own skills to good use?

The role is essential to the effective running of Little Cuckoos, offering the right candidate the opportunity to get involved in the everyday financial management of the pre-school.

Starting from September 2018, this voluntary role would be ideal for a parent, retired person, or anyone with some extra time on their hands who has a background in finance/business/accounting, and would like to make a valuable difference to this thriving pre-school in Corsley.

If you are interested in supporting us in our mission to improve the education and development of our children, we would be delighted to hear from you. To receive further details of this position, please contact Little Cuckoos at [littlecuckoos@hotmail.co.uk](mailto:littlecuckoos@hotmail.co.uk) or call 01373 832 298.

Term-time opening hours: Monday, Wednesday, Thursday and Friday 9 am - 3 pm

Term-time Mother and toddler group: Tuesday 10 am - 11.30 am

For more information, please contact us on 01373 832298

**[www.littlecuckoos.co.uk](http://www.littlecuckoos.co.uk)**

# TEA & sympathy

Considerate catering at a difficult time

*All our food is homemade, we provide delicious teas, sandwiches and cakes through to more elaborate options.*

*We offer a truly bespoke, caring and professional service.*



Telephone Kim Clark on 01373 832151 or 07843 056916

e-mail [kim@teaandsympathy.uk.com](mailto:kim@teaandsympathy.uk.com)

[www.teaandsympathy.uk.com](http://www.teaandsympathy.uk.com)

## CHANTRY CONSTRUCTION

stone walling • patios

drives • extensions

*prompt reliable service*

*mini digger and driver for hire*

**01373 836787      07855 343388**

COMPUTER & LAPTOP REPAIRS  
UPGRADES / SYSTEMS & LAPTOPS

VIRUS REMOVAL / BROADBAND  
WIRELESS / NETWORKING



FAST, FRIENDLY, PROFESSIONAL SERVICE  
COMPETITIVE RATES  
ONSITE OR WORKSHOP

CCO CompTIA

call  
**01373 302901**

[www.ntscomputing.co.uk](http://www.ntscomputing.co.uk)  
[help@ntscomputing.co.uk](mailto:help@ntscomputing.co.uk)

### LAPTOP REPAIRS

We also replace  
laptop screens,  
keyboards,  
CD-DVD drives,  
fix overheating  
and more

## Forget-me-not

• GARDENING SERVICE •



Weeding, pruning, planting,  
fence painting, etc

01373 464416

07890 850465

## Do you need a plumber? Call...



## Paul Antell Plumbing

07890 366832

01373 467427

Professional, reliable, friendly and local  
[paulantellplumbing@talktalk.net](mailto:paulantellplumbing@talktalk.net)  
[www.paulantellplumbing.co.uk](http://www.paulantellplumbing.co.uk)



www.darchoil.com

## BOILER SERVICING & REPAIR

**All our technicians are  
OFTEC registered and approved**

Call us on **01935 473302** for an instant quote or visit [www.darchoil.com](http://www.darchoil.com), fill out the form and one of our team will call you back during office hours

- Boiler servicing on-demand or as part of a Contract Service Agreement
- Servicing of oil, commercial and domestic boilers undertaken
- Group discounts available on request – call us for information

Call us on **01935 473302** or email **info@darchoil.co.uk** for more information

## Rose Knight



Dog and cat  
minding service

**01373 464904**

**07773 435254**

**knight\_rosemary@sky.com**



# TREVOR & JON *by Amy*

Unisex Hair Salon

## 01225 754001

**trevorandjonbyamy@outlook.com**

Unit 2 Stone Mill, Trowbridge BA14 8BU

## JD Weed Control

[JDweedcontrol@gmail.com](mailto:JDweedcontrol@gmail.com)

**Call James on 07850401547**

Free, no obligation quotation

**Flower Beds - Patios - Borders - Drives  
Non-Chemical Weed Control & Prevention**

James, Rob and Adam, former employees of Roger Patch Ltd are pleased to introduce...

# CMP Complete Ltd General Builders

19 Swaledale Road, Warminster, BA12 8FH

**James** 07801 868288

**Rob** 07766 905131

**email** [cmpcompleteltd@gmail.com](mailto:cmpcompleteltd@gmail.com)

*HETAS registered to fit woodburners*

**Corsley and  
Chapmanslade Churches**

# **Cream Teas and Pimms**

**At Job's Mill Garden,  
Crockerton BA12 8BB**

By kind permission of Lady Silvy McQuiston

**Saturday 21<sup>st</sup> July  
2.30 pm – 5.30 pm**

**Tickets £7.50 (inc. cream tea)  
Pimms £3 per glass**

**Tickets available from Judith 01373 832803  
and Phil 01373 832845**

**Chapmanslade Parish Council**

# Parish Council Briefing

Notes from the meeting held on  
30th May

This meeting was held to discuss a planning application regarding Sienna's Valley.

There were fourteen members of the public present. Two councillors declared an interest in the planning application before the Council and gave their apologies absenting themselves from participating as Councillors in the business of the meeting.

The Chairman gave the public an opportunity to speak on the planning application and various concerns were raised. The applicant was then given the opportunity to speak about the application. He responded to the public comments and made several points.

The meeting then entered into closed session. There was much discussion in trying to determine what had changed since the previous application. At the end of the discussion it was agreed that the Council would object to the planning application on five points.

## Next meeting

The next Parish Council meeting is scheduled for 5th July.

*Keith Muston, Chair*  
01373 832755  
[themustons@btinternet.com](mailto:themustons@btinternet.com)

## Church and Community Coffee Mornings

A warm welcome to come along to our church and community coffee mornings held each third Thursday of the month. We meet at The Three Horseshoes in Chapmanslade from 10 until noon.

So do come along if you have an hour to spare. Meet lots of friends, old and new, for a chat over a cup of Ben's freshly brewed coffee.

If you're new to the village, this is the place to come to be warmly welcomed and to say hello. Pauline, our vicar, and Debbie or Candy, our PCSOs, are often able to join us. We look forward to seeing you.

## Traditional Mole Catcher

07512 681111

01373 836350



For up-to-date information such as church services, previous editions of The Bridge, local clubs and activities, business listings, and other useful information, please visit

**[www.corsleyandthebridge.co.uk](http://www.corsleyandthebridge.co.uk)**

Want something added? Just email the Editor with your request!

# A fond farewell to Gwen and Dennis!

Many people gathered on a warm, sunny Sunday afternoon on the Memorial Field at Chapmanslade Village Hall, to thank Gwen and Dennis Barnard for the contribution they have given over many years to 'God's Own,' the village of Chapmanslade. The event took the form of a 'Bring your Own Food' and Cream Teas, and the red, white and blue bunting was also a nod to the Royal Wedding.

Chris Page read a tribute to Gwen and Dennis. Dennis then replied with a very moving speech. Frank Lake presented a cheque from the generous contributions of the village, Caitlin Elkins gave Gwen a lovely arrangement of flowers. Ken, Budgie and Stevie wrote, and sang a special song for the occasion, and presented Gwen and Dennis with a framed script of the words.

Dennis was born in Chapmanslade in his Father's shop in 1934, when electricity first came to Chapmanslade, and has lived here (except for four years in Corsley), until his recent move to Frome. Dennis has played many roles in the village, after being a pupil in the village school, where he eventually became Chair of Governors, and oversaw many improvements.

Dennis ran the very successful village shop and Post Office with his brother, Graham, for ten years, then with Gwen for twelve years. Delivery was all part of the service, and I am sure many people in Corsley and Chapmanslade appreciated this, especially the elderly and lonely. The shop was a real focal point of the village, and greatly missed.

In 1970 Dennis and Gwen, along with many local families, including the Radleys, Browns, Rayners, Clatworthys, Daniels, Drews, Marshes and Weguelins decided to raise money for a new hall! Over 4 years they helped to run a hot dog stall on the A36 on weekends and Bank Holidays, organised dances, sponsored walks, raffles and even 'win a man for the day' to raise money for the present village hall to replace the 'old hut' The new hall opened in 1974. It cost £22,000, of which the villagers had raised £7,000! Their efforts were even reported on Radio Bristol by Kate Adie! It is still a fantastic memorial to all their hard work.

One of the major contributions Dennis has given to the village was his 42 years on the Parish Council where he has diplomatically sorted many disputes, given sound advice and probably most importantly played a large part in bringing main drains to Chapmanslade!! Kate Adie was so impressed that she came to stay with Dennis for their inauguration party in the village hall!!

Dennis must have helped to raise thousands of pounds over the years at various functions, with his Clem Pullet comedy sketches, and his auctioneering skills. Many of these pounds have helped the Village Church and the Hall, but he is also known far and wide for these talents, so many surrounding villages and Frome have also benefitted from his generosity of time and talent.

Luckily Dennis and Gwen have only moved to Frome, so I am sure we shall still see them

at village events. Dennis has always lived by the motto of his favourite song 'If I Can Help Somebody.' I think he has truly lived up to this, as many residents of Chapmanslade can testify.

The village wish Gwen and Dennis every happiness in their new home

## THANK YOU!

*Never has so much been done by so many, for just two old pensioners moving only three miles down the road.*

*The speeches, the song, the flowers, the cream teas, and the kindnesses of so many people—especially the cheque—were surprising, humbling, but very, very much appreciated.*

*We are, geographically, removed from Chapmanslade, but emotionally and spiritually, we hope always to be part of this very special village.*

*Gwen and Dennis Barnard*

## SAVE THE DATE!

Early notice for the Chapmanslade and Corsley...

**MACMILLAN COFFEE MORNING  
10-4 pm, Friday 28th September  
at Barbers Plant Centre**

If you would be prepared to help out for an hour or so on the day serving tea and cake and/or to provide a tray bake or cake for sale please contact Liz Garrett (for Corsley - on 01373 839060 or lizi.garrett@bt internet.com) or Janet Buick (for Chapmanslade - on 01373 832318 or jebuick@gmail.com), or just come along on the 28th!

'You're part of a huge movement that's making a real difference to people affected by cancer. Almost everything we do, from Macmillan nurses to providing cancer information to helping people with money worries, relies on donations. We simply would not be here without supporters like you.

When you give to Macmillan, we give you our word your money will help make sure no one faces cancer alone'.

## Garage Sale

**10am to 3pm, Saturday 7th July**

**Massive bargains on all sorts of rubbish...  
Furniture, china, CDs DVDs, books and much more!**

**149 High Street, Chapmanslade  
(opposite the entrance to the village hall)**

# Piano Lessons

*All standards welcome*

**Debbie Rickhuss**

Teacher of Pianoforte and Theory

Contact 01373 832829

07747 499990

rickhuss@tiscali.co.uk



# M W Garden Services

20+ years experience

A tailor made service for all types of garden maintenance

Insured and CBI's checked

mark22.weaver@mypostoffice.co.uk

Telephone 01373 832854

Mobile 07921 818452

# Dashing Dusters

- Cleaning and ironing to a high standard
- General domestic assistance
- Commercial cleaning
- Reliable
- Reasonable rates
- References available

01373 832484 (evenings)

# Steve Dayman-Johns

## Driving Instructor

Condensed Courses and

Gift Vouchers available

Tel 01373 865422 - Mob 07730 445648

email [stevekdj@gmail.com](mailto:stevekdj@gmail.com)

# anatomy clinic

28 East Street Warminster BA12 9BN

01985 219122

[www.anatomyclinic.co.uk](http://www.anatomyclinic.co.uk)

 [@anatomyclinic](https://www.facebook.com/anatomyclinic)

# Hardwood logs for sale

(cut to size if required)

**FREE DELIVERY**

**R M Log Supplies**

Beckington

Call Robin on

**07876 621929**

## Beauty

Organic facials, manicures, pedicures, tinting, threading and waxing

## Chiropody

Athletes foot, diabetic assessment, fungal infections, ingrown toe nails, nail trimming, verucas

## Holistic

Aromatherapy massage, deep tissue massage, hot stones massage, Indian head massage, Swedish massage

*Whether you're looking for treatment or a treat, we offer a wide range of therapies to suit every need - all under one roof!*

# Whitbourne Chapel

*'In every situation ... with thanksgiving, present your requests to God...'  
Phil 4:6*

## The Christians' vital breath

It's July and, for me, memories as a boy at a time of the year when my asthma was at its worst. I spent many days at home struggling to breathe; both day and night spent trying to catch my breath, coughing, keeping out of the sun and away from pollen in particular. These days, many years later, I am largely free of asthma and run to keep fit (although not very fast!) over longer distance (5k & 10k).

The hymn writer James Montgomerie (1771 – 1854) describes prayer as the 'Christian's Vital Breath'. Prayer, our means of communication with our loving gracious heavenly Father, is indeed just that vital breath. It's vital to our relationship with God and an essential part of our Christian walk. The Bible has much to say about it. In the Gospels Jesus was asked to teach his followers how to pray. Jesus taught them what we call the Lord's, or family, prayer as a framework from which all our prayers should flow. It consists of worship, thanks for God's provision, forgiveness for our sins, requests for our needs and protection from our enemy.

Later, the Apostle Paul wrote to the early church, "Do not be anxious about anything, but in every situation, by prayer and petition, with thanksgiving, present your requests to God."

The same applies to us today. We can all pray at any time to the living God about those situations and people for whom we are concerned. We see God answering prayer, not always in the way we expect but in His perfect purposes for us and the world.

Let's be those who breath each vital breath as we pray daily.

*Chris Andrews  
Visiting Preacher*

## Somerset Gospel Outreach

One of our June preachers was Chris Gadd from Somerset Gospel Outreach. Chris is based at Street Baptist Church, but his 'patch' for evangelical work – telling people the Good News of Jesus Christ – covers all Somerset, from towns like Bridgwater and Glastonbury to villages like Langford and Redhill, on the A38 not far from Bristol Airport.

Another visiting preacher, Clive Williams, joins Chris on occasion and Chris told us of their plans to visit Bridgwater Fair this year. If you go, you may well see Chris, Clive and Whitbourne's own Richard Wilson there, too, handing out tracts and speaking about our wonderful Saviour.

*Gill Redman 01985 215062  
paradiselost@btinternet.com*

## Regular times

**Services** every Sunday morning at 11.00 for about an hour (coffee served at 10.45)

**Chapel Prayer** meeting every Sunday morning from 10.20 - 10.40

**Communion** on the first Sunday of each month at 12 noon for 15 minutes

**Bible study sessions** as announced



## COMPUTER PROBLEMS?

**01373 812804**

Email  
Advice for new users  
Anti-virus defence  
Web sites  
Custom programming

Networks - home & office  
Home tuition  
Web access  
Privacy & security  
Repairs

[www.technojeeves.com](http://www.technojeeves.com)

[info@technojeeves.com](mailto:info@technojeeves.com)

No Job Too Small



### Local Electrician

Part "P" registered NAPIT approved  
Domestic and Commercial Work Undertaken  
Third Party Testing

Call for a Free no obligation Quotation

Tel: 01749 850769

Mobile: 07779 429786

email:

[ian@fushi-electrical.co.uk](mailto:ian@fushi-electrical.co.uk)

[www.fushi-electrical.co.uk](http://www.fushi-electrical.co.uk)



## E G MARTIN LTD Heating Oil Distributors

Telephone 01373 822784

Victory Road, West Wiltshire Trading Estate  
Westbury, Wiltshire, BA13 4JL

## WESTERN SKIP HIRE

Telephone 01373 865247

Victory Road, West Wiltshire Trading Estate  
Westbury, Wiltshire, BA13 4JL



## Windows, Doors & Conservatories

- Free quotes from our local experts
- Strengthen your home's security
- Reduce your heating bills
- Excellent offers

up to  
**45% OFF**  
selected  
**WINDOWS & DOORS**

**01985 215566**  
[www.newwindowsltd.co.uk](http://www.newwindowsltd.co.uk)

**New  
Windows**



# Application for membership of Corsley Show Society and tickets for 2018 Show



## PLEASE COMPLETE USING CAPITALS (if handwriting)

Main member title: Mr/Mrs/Miss/Ms/other (specify) .....

Main member first name .....

Main member surname .....

Full postal address .....

Postcode..... Telephone.....

Main member email address .....

*The 'main member' is the person to whom all communications will be sent.*

*Entry to the Show is by ticket only, not by membership card.*

Names of additional adult members covered by this application and wanting membership cards:

.....  
 .....

*Only adult members have right of entry to attend the AGM*

## Extra entry tickets required

Application to be made no later than **Monday 31st July 2018**

Ticket type (adult member tickets include membership of the Society)	Cost per ticket	Number	Total cost
Adult members and adults (including seniors)	£5		
Children (aged 7 to 16)	£2		
Family (2 adults (1 or 2 members) and up to 3 children)	£13		
Children (6 and under are FREE no tickets required)	FREE!		
Donation (optional)			
* Please make cheques payable to 'Corsley Show Society' or you can pay by BACS as below		<b>Total cost</b>	

To pay by BACS please use a reference of "MEM" followed by your surname and make payment to: S/c 30-99-13 A/c 00543216 (Lloyds Bank) and tick this box. ☐

If paying by BACS then an electronic version of this form may be submitted to [membership@corsleyshow.org.uk](mailto:membership@corsleyshow.org.uk). This form is available on [hdwebsites.wix.com/csapp2018](http://hdwebsites.wix.com/csapp2018)

Please return the completed form (SAE appreciated) with cheque/ cash (as appropriate) for the total amount to: Marion Moldon, Membership Secretary, Fordwater, Lane End, Corsley, BA12 7PG

\* The information on this form will be held on computer and used in connection with administering membership (and associated tickets) of the Corsley Show Society / Corsley Show Limited. It will not be passed to a third party. Membership is governed by the Constitution of the Corsley Show Society and its conditions. This is available on website: [hdwebsites.wix.com/cssapp2018](http://hdwebsites.wix.com/cssapp2018).

The data will only be used to contact you in relation to the next two shows, unless you renew your membership in at least one of the next two years.

## One Team

# Community Policing

PCSO Debbie Robbins from the Warminster Rural team brings us the latest Community Policing newsletter

Every year, Wiltshire Police assesses its operational priorities for the year ahead. Through a combination of research and consultation, the intelligence team identify the areas of criminality that present the biggest threat, harm and risk to our communities.



As has been the case in previous iterations of the Control Strategy, there are clear themes running through all the priority areas – Cyber Capabilities and Vulnerability and Exploitation. Digital technology is used to carry out offending in all of the above areas. And, at the heart of all the above, there are vulnerable victims, witnesses or offenders who are often being exploited.

The Control Strategy does not mean that we stop doing other areas of day-to-day business, or that other areas of demand or criminality aren't important. It is a means of

providing additional focus on some of the areas that have the greatest threat, harm and risk to or risk to our communities.

## Crime exceptions data

These figures are based on an evaluation of data, over a two-year rolling period. Using this data we can predict what figure is the average that should be reported in a specific month, and what are the higher and lower parameters that we may expect. Figures outside of these parameters are classed as 'Crime Exceptions'.

*\*\*\* Domestic Abuse figures will also be included in the values as it is on our Control Strategy but no details on these cases will be shared \*\*\**

## Warminster Town and Villages combined (Area Board)

Warminster Area board includes two beat areas; one for the town, (ER11) and one for rural and villages (ER12). The data is as follows:

May 2018 showed a total of 130 crimes for the whole Warminster Area Board region against the average of 101.8 for this same month over the last two years.

### ER12

#### (Warminster rural and villages beat)

May 2018 showed a total of 16 crimes for the ER12 area against the average of 12.9 for this same month over the last 2 years. There are no exceptions within the data.

The four largest crime groups accounted for 92% of this recorded crime as follows:

- Theft showed 20 crimes compared to the average of 8.5
- Violence against the person showed 15 crimes compared to the average of 9.2
- Burglary showed 8 crimes compared to the average of 5.1
- Vehicle crime showed 2 crimes compared to the average of 5.8

## **Crimes and Updates of note**

Crime: Theft

COURT LANE, CORSLEY between 10am and 1pm a suspect has stolen a Stihl Cordless trimmer TVO £600-£700 which was left on a driveway of a property. They have stolen a charger and 2 batteries for the trimmer TVO £300 from the open back doors of a Renault Kangoo.

Crime: Criminal Damage

A362, CORSLEY Road rage incident at around 8.42pm on 4th June. An altercation with a male suspect driver in a Grey VW golf after being tailgated, the male suspect tried to open the driver's door of the victim (which was locked) and then punched the passenger side wing mirror smashing it. The victim drove away from the scene.

Crime: Theft

LANE END, CORSLEY overnight on the 22nd May suspects have stolen 15 chickens and 1 cockerel TVO £150.

For a detailed breakdown of the crime in your area visit [www.police.uk/wiltshire/](http://www.police.uk/wiltshire/)

## **Community policing priorities in your area**

### **Weekly tasking meeting**

Inspector Andy Fee chairs a weekly internal tasking meeting where emerging community issues and concerns are raised and discussed for the whole West Wiltshire

CPT area. From this meeting, priorities and actions are set and a tasking document produced. This involves developing strategies and the targeting of resources (including partner agencies) into tackling the issue or concern.

Firstly, the Warminster Area's current priority relates to beauty spot thefts (in various locations) which is also affecting wider West Wiltshire. At this time of year, we often have criminal activity at car parks and parking areas at beauty spots and known walking areas. Although people are locking their cars, victims often still leave valuables including handbags, devices and cash in their cars. Thieves are targeting such cars and then searching under seats and in car boots for valuable items. Where bank cards are found, these are often used or attempted to be used.

We have been actively patrolling areas during the day and evening. The CTT (Community Tasking Team) from Salisbury under DS Gary Epps is taking the lead on the operation which includes plain clothes patrols. They have already had one successful arrest of a male in connection to such crime. He has been released RUI (under investigation). However offences are still occurring across West and South Wiltshire.

Secondly, there are four mobile power generators which are providing power to Chapmanslade due to SSE having to hold on repairs to main powerlines. Thefts of red diesel are occurring at these generators overnight. SSE has improved security at the sites including heras fencing but they are quite remote and exposed locations. The CPT are conducting regular patrols to these sites, but we also ask the public to be vigilant regarding activity or suspicious vehicles in the area.

# Wren House

Residence for the retired and elderly

Wren House in Warminster is a long-established, elegant retirement home, specialising in individual care in gracious surroundings. Having just thirteen rooms, each with a private bathroom, we are able to offer the ambience of a family home, together with caring staff and the facilities to enable our residents to enjoy their later years with dignity.

Wren House serves fresh, locally-sourced, home-cooked food. Residents enjoy a varied activity programme which includes a gardening club and our own choir.

**Mrs Ellie Simmonds**

Wren House Ltd, 32 Vicarage Street, Warminster, BA12 8JF

Telephone 01985 212578

wrenhousewarminster@hotmail.com

www.wrenhousewarminster.co.uk

## ST DAVIDS WHITSAND BAY CORNWALL



Holiday Let  
Sleeps up to 8  
01373 464870

www.stdavidswhitsand.co.uk



**Joe Ricks**  
Independent Financial Adviser

*Pensions, Retirement Planning, Equity Release,  
Wealth Management, Mortgages, Financial Protection*

07828 860 018 [joe@matherandmurray.co.uk](mailto:joe@matherandmurray.co.uk)

[www.matherandmurray.co.uk](http://www.matherandmurray.co.uk)

## Paul Ledbury

Quality Painting and Decorating

30 years experience

INTERIOR AND EXTERIOR  
GENERAL MAINTENANCE

5 Hampshire Gardens  
Westbury, Wiltshire  
BA13 3EX

**Telephone 01373 858163**  
**Mobile 07976 242045**

## TOENAIL CUTTING REFLEXOLOGY

IN YOUR OWN HOME

ALICE LEWIS

**Telephone 01373 229335**



## Karina

Mobile Hairdresser

Tel. 01373 832823

Mob. 07742 690337

# CLARION

electrical

Part P registered & guaranteed



*Making household electrical circuits work safely*

clarionelectrical@btinternet.com

*Fifteen  
years in  
the trade*

01985 216641 07766 355237

## RICHARD ROBBINS

City and Guilds Trained Gardener

*All aspects of Garden work undertaken*

07510 130083

## Your Local Electrical and Property Services

Call or email now for a  
free quote 01373 464577  
enquiries@lawrencefairfield.co.uk

**LAWRENCE  
FAIRFIELD**  
Limited



www.lawrencefairfield.co.uk



allsorts  
of  
**FENCING**

Your local Fencing Specialist

Stock Wire / Post and Rail / Close board  
Decking / Patios / Gates / Sheds / Pergola

www.allsortsoffencing.com

01373 832339 / 07710 180551

Also: Topping of Fields and Paddocks

## Seasoned Logs

*free local delivery*

Tel / text Garry on 07801 179917

loads from £120

Seasoned hardwood logs within a 15 mile  
radius of Frome. All timber is ethically  
sourced from local woodlands

We can supply hard- and soft-wood  
mixed loads or hardwood only

www.woodlandworks.co.uk



## KB Landscape

30 years in landscaping

Phone

01373 832371

Mobile

07951 297173

**Kevin Brixey - for quality and experience**

5 Red Cottages Corsley Warminster Wiltshire BA12 7PS

Landscaping  
Patios and paths  
Turfing and seeding  
Brick and stone walling  
Decking and pergolas  
Block paving  
Gravel drives  
Pond work  
Fencing

**A view from over the hedge...**

# Countryside Matters

As Brexit hangs over the agricultural industry, with so many intelligent people with opposing views trying to decide how we are to provide food that is priced at a level that will be acceptable to households, economical to the farmers and producers, able to maintain high animal health standards and to get a balance of care for our countryside.

I am grateful that the government are listening to farmers and hope that decisions will be made ASAP so that the food industry can plan its future.

Back to the daily tasks that are keeping us all busy...

June weather, although mixed, has allowed second-cut silage to be cut and put into the silage clamps or baled and wrapped and stacked handy to the winter feeding areas back at the farm.

Cows due to calf in the autumn will be taken out of the milking groups and allowed to rest up for a month or two.

With less cows being milked it also means that each member of staff in turn is able to take a well-earned holiday in the summer months

The maize crop has really grown in the last month – some waist-high by the middle of June as the rain and heat has really suited this crop

July will bring regular crop inspections looking for infections that come from air and soil.

Also daily checks on cattle as they graze to see they have fresh grazing and water and no medical problems such as eye infections and cuts and bites and sheep and lambs for fly-strike.

This is the time of year when farm buildings are repaired and improved, repairing cement yards and gatehangings. Also new and more comfortable cubicles for the coming winter.

The hedgerows are lovely with wild roses and honeysuckle and are full of noises with young bird-life.

The bird-life around the farm building has been hectic – swallows, house martins and swifts all busy feeding and protecting their young from woodpeckers and sparrowhawks.

Sadly, our resident pheasants and partridge have yet to bring their young to show us; once again they have many predators, nature can be very cruel .

Enjoy the beautiful countryside around you.

*Judith Helliar*



# Small ads

£1 for EACH item for sale or wanted (cash only please) - at one of the two drop-off locations)

**Please note: no cash, no advert!**

## Answers to Bob's Bafflers

- 1 Prince Edward and Sophie, Earl and Countess of Wessex
- 2 Alabama
- 3 Bedfordshire (Avon no longer recognized as a county)
- 4 The Mystery of Edwin Drood
- 5 Heartbeat
- 6 The King and I
- 7 Hogwarts
- 8 Mars
- 9 Alan Freeman
- 10 Dove
- 11 Goat
- 12 To ascertain whether a lady claiming to be a princess, actually was.  
(From the Princess and the Pea by Hans Christian Andersen – the story tells us the pea was placed in a museum afterwards and is still there today, unless someone has stolen it)

---

## Local organisation adverts

£2 per month for a small boxed advert or £7.50 for a full page. Full page adverts are allocated depending on space available and cannot be guaranteed. All monies must be at one of the two drop-off locations (Barter's Plant Centre or Acres Supply Garden Centre) by **4pm** on the **19th** of the month. Please note: no cash, no advert!

---

## Trade advertising

Annual trade advertisements (12 issues, when space is available)

1 space	(69mm wide x 33mm high)	£22.00
2 spaces	(69mm wide x 66mm high)	£42.00
3 spaces	(quarter page - 69mm wide x 100mm high)	£60.00
4 spaces	(138mm wide x 66mm high)	£75.00
6 spaces	(half page - 138mm wide x 100mm high)	£104.00

Trade advertisement material should be supplied in print-ready format, to the chosen standard size and correct shape.

For trade advertising enquiries, please contact David James (Trade advert coordinator/Treasurer) at either thebridge832@gmail.com or 01373 832443.

# Darling Interiors

Made to measure Curtains & Blinds • Bedspreads • Tracks & Poles • Fitting • Competitive Pricing

*Chosen in the comfort of your own home*

Choosing new furnishings has never been simpler. We have an extensive range of exquisite fabrics from leading designers and suppliers to choose from. For the finishing touch, we can provide beautifully crafted tracks and poles from the Bradley range and other leading brands measured to fit different sizes of bay windows and straight windows.

**Call today to book your FREE No Obligation Consultation**



t: 01373 672 359 e: [info@darling-interiors.co.uk](mailto:info@darling-interiors.co.uk) w: [www.darling-interiors.co.uk](http://www.darling-interiors.co.uk)

**cloud**  
homecare

Quality care and  
support in Warminster  
and the surrounding  
villages



**We are a small, Corsley based care provider**

**We provide care to people who need support  
to remain living in their own home**

**Please telephone or email us, or visit our  
website for further details**

Tel. 01373 832 597 enquiries@cloudhomecare.co.uk  
[www.cloudhomecare.co.uk](http://www.cloudhomecare.co.uk)

# Make plans for your garden this spring...



## Turf



**£3m<sup>2</sup>**

## Topsoil



**from £28 tonne**

## Paving



**from £19m<sup>2</sup>**

## Sleepers



**from £18**

01373 832591  
[www.acressupply.com](http://www.acressupply.com)  
[info@acressupply.com](mailto:info@acressupply.com)

*Open 7 days a week!*

Acres Supply  
Corsley  
BA12 7PP

# FG COLLIER

KITCHENS • BATHROOMS • INTERIORS

## WHOLE HOUSE DESIGN & SOLUTIONS



FG COLLIER LTD 29-35 EDWARD STREET WESTBURY WILTSHIRE BA13 3BL  
TEL 01373 822227 EMAIL [INFO@FGCOLLIER.COM](mailto:info@fgcollier.com) WEB [FGCOLLIER.COM](http://FGCOLLIER.COM)