

The Bridge

July 2017



Sizzle at a super barbecue, get quizzical at the pub, pick some more litter, sample some coffee mornings, trundle by train to Weymouth, pitch up at the parish council meeting, there's lots to do in July...



Why Honda?

There's a simple reason why you'll see so many Honda products still hard at work after many years' service – they're built to last!

OFFERS AVAILABLE THROUGHOUT THE YEAR

**Mowers • Tillers • Brush cutters
Blowers • Chainsaws • Hedge trimmers**



GARDEN MACHINERY SPECIALIST

SALES • SERVICES • PARTS

www.mendipmowers.co.uk 01373 832965

Unit 7, Green Farm Industrial Estate, Chapmanslade, BA13 4JJ



Frome Heating Specialists

J L and M W Knight

**Heating and plumbing engineers
specialising in:**

Oil and gas boiler servicing

Boiler replacement

Energy management

Pressurised hot water systems

Underfloor heating systems

Frome family business established 1964

Stavanger, Corsley, Nr Warminster, Wiltshire, BA12 7QL

Call 01373 832578



199876

The Bridge

monthly magazine for the villages of Corsley and Chapmanslade

Articles

Please submit articles either by email to viv.thomas146@btinternet.com or by hand (legible handwriting please!) and take them to the drop-off locations at Barbers Plant Centre, Chapmanslade, or Acres Supply Garden Centre, Corsley by the deadline.

News, reports, updates, thank you's, etc, from individuals or local organisations are free – the more the merrier – keep 'em coming!

File types

Save your files as .doc – please don't send .docx files – I can't always open them successfully.

Advertising

Small ads are £1 for each item whether 'For Sale' or 'Wanted'.

Events/local organisation ads (churches, clubs, playgroups, etc) are £2 per month for a boxed advert.

Full page ads cost £7.50, are subject to space availability and cannot be guaranteed,

If you are advertising, don't forget to take the fee – cash or cheque in a sealed envelope please, to either of the drop-off points (Barbers Plant Centre or Acres Supply).

Please note: no cash, no advert!

Trade advertising

Please see information on the last page.

In this issue...

8 Bob's Bafflers
a cunning quiz

12 Science
biology: changing the world

16 Parish Council briefing
Corsley

Seven Open Doors **21**
news from the pews

Corsley WI **26**
news from the ladies

Parish Council briefing **32**
Chapmanslade

35 Corsley Show 2017
membership muster

37 Whitbourne Chapel
chapel colloquy

42 Countryside matters
views from over the hedge

Deadline

**Deadline for articles
or adverts for the next
issue of The Bridge is
4pm 19th July**

**Please note that no
items will be accepted
after this date**

July

Saturday 1st

Corsley litter pick – 10 am, meet opposite the Royal Oak
(Join Sue and Michael Taylor for their last ever litter pick!)

Sunday 2nd

Chapmanslade BBQ – 12 noon, Village Hall

Tuesday 4th

Village Coffee Morning – 10 am - 12 noon, Corsley Reading Room

Wednesday 5th

Corsley WI – outing to Weymouth

Thursday 6th

Chapmanslade Parish Council – 7.30 pm, Chapmanslade Village Hall

Thursday 13th

Corsley WI – 7.30 pm, Corsley Reading Room, Open Meeting, 'Juba, Sudan'

Thursday 20th

Church and Community Coffee Morning – 10 am - 12 noon, Three Horseshoes
Chapmanslade

Sunday 30th

Pub Quiz – 6pm, Cross Keys, Corsley

August

Tuesday 1st

Village Coffee Morning – 10 am - 12 noon, Corsley Reading Room

Saturday 5th

Corsley litter pick – 10 am, meet opposite the Royal Oak
Elizabethan Evening presents 'The Mikado', Manor Farm, Corsley

Sunday 6th

Croquet & Cream Teas, Chapmanslade Village Hall

Thursday 10th

Corsley WI – 7.30 pm, Corsley WI Flower, Produce and Handicraft Show

Thursday 17th

Church and Community Coffee Morning – 10 am - 12 noon, Three Horseshoes
Chapmanslade



Diary Dates

Sunday 27th

Songs of Praise and lunch – starts at 11am followed by a 'bring and share' lunch at the Showground

Pub Quiz – 6pm, Cross Keys, Corsley

Bank Holiday Monday 28th

Corsley Show

www.
corsleyshow.
org.uk

September

Saturday 2nd

Corsley litter pick – 10 am, meet opposite the Royal Oak

Monday 4th

Corsley Parish Council – quarterly meeting – 7.30 pm, Corsley Reading Room

Tuesday 5th

Village Coffee Morning – 10 am - 12 noon, Corsley Reading Room

Thursday 7th

Chapmanslade Parish Council – 7.30 pm, Chapmanslade Village Hall

Thursday 21st

Church and Community Coffee Morning – 10 am - 12 noon, Three Horseshoes
Chapmanslade

Sunday 24th

Pub Quiz – 6pm, Cross Keys, Corsley

Wednesday 27th

Lite Bites lunch – 12.30 pm, Corsley Reading Room

October

Saturday 7th

Corsley litter pick – 10 am, meet opposite the Royal Oak

Thursday 12th

Chapmanslade Parish Council. 7.30 pm Chapmanslade Village Hall

Thursday 19th

Church and Community Coffee Morning – 10 am - 12 noon, Three Horseshoes
Chapmanslade

Wednesday 25th

Lite Bites lunch – 12.30 pm, Corsley Reading Room

Thank you!

Many thanks to everyone who contributed so generously to my collection for 'Scope' in April. I have now received a thank you letter acknowledging the excellent total of £60.16

Thank you again!

Pat Sutton

Corsley litter pickers

We meet opposite the Royal Oak at 10am on the first Saturday of each month. Our next 'pick' is on Saturday 1st July – do come along and help keep our village beautiful.

Cath Aylesbury and Sue Taylor

Corsley Show 2017



We've a very special guest coming to the Show this year – Tractor Ted!

If you've got little ones or grandchildren, they're sure to know him! There's lots of activities to get involved in - tractor and trailer rides, welly wanging, meet Ted's animal friends, have a go at the raffle to win a family ticket to Tractor Ted at Bowood and some fabulous goodies up for grabs for the second and third prize.

Horticulture and Crafts

There are some truly lovely gardens in Corsley and Chapmanslade so we're hoping you'll enter some of your flowers and vegetables in the H&C competition. If you're keen on crafts, painting, metalwork, sculpture – get creating ready for the Show, there are loads of classes for everyone of any age!

Tug o' war

We're looking for teams to take part in this popular event – the winners take away a

barrel of Moles Brewery beer (that's 72 pints for you to share)

Smash, Bash, Piano Trash

More teams needed for this event back again by popular demand! Smash up an old, decrepit piano into small enough pieces to fit through a letterbox! The winners take away a barrel of Moles Brewery beer (that's another 72 pints to share out!).

Volunteer

Fancy manning the gate for an hour? Marshalling vehicles in the car park? Want to help put the Show up – or even take it down? Putting on the Show involves an awful lot of people and there's always lots to do in the run-up, so don't be shy – get in contact, we'd love to hear from you!

Car Boot Sale

At the Showground on Sunday 27th August, starting at 12 noon!



Pears Electricians

Nigel Charteris - BSc (Hons) M.I.E.T.



Professional Local Electrician

A HIGH STANDARD OF WORK AT REASONABLE RATES

Part P registered with www.napit.org.uk - Testimonials and references available

**Faults & Troubleshooting • Repairs & Improvements
Installation Condition Reports • Boiler Wiring**

www.pearselectrical.co.uk

01985 213314 or 07717 534026

*Getting married?
Special occasion?*

Classic 1960 Hillman Minx Estate car for hire

Chauffeur ~ bows ~ flowers ~ champagne

Reasonable rates

Please contact Amanda on

01373 827795 or 07720 673698



OAKLEY

GARDEN MACHINERY

Grove Lane, Marston Trading Estate

Frome, BA11 4AT



**For Sales, Spares,
Workshop Service
and Repairs**

Hayter
Mountfield
Lawn King
Westwood
Stihl
Honda
Toro
Echo
Husqvarna
Shindalwa
Oregon
and more...

www.oakleyfrome.co.uk

01373 467712

Bride by Design

Bridal gowns and accessories



2 Silver Street
Warminster, BA12 8PS

Please contact us to
arrange an appointment
t. 01985 217216

e. info@BridebyDesign.biz

www.bridebydesign.biz

**STUNNING COASTAL VIEWS ON
CORNISH COAST NEAR LOOE**



Six bedrooms (sleeps 12)

Private access onto beach

Pets allowed

Top class facilities including wi-fi

Rent for week or even long weekend

Downstairs bedroom and shower room

For more info: Sandy Parrish 01373 832522

The **co-operative** funeralcare

- 24 hour service
- Free bereavement advice
- Pre-paid funeral plans

WESTBURY 48 Warminster Road, BA13 3PF
01373 858142

WARMINSTER 3 George Street, BA12 8QA
01985 220105

FROME 1 Nunney Rd, Frome BA11 4LA
01373 473426



Part of The Southern Co-operative

ORCHARD UPHOLSTERY

RE-UPHOLSTERY OF
ANTIQUE AND MODERN
FURNITURE

❖ FREE ESTIMATES ❖

COLLECTION AND
DELIVERY SERVICE

Telephone Lesley
01373 464870

Sharon's Foot Clinic

SAC Dip FHPT SAC Dip FHPP



Fully insured and highly trained

For the professional treatment of:
Corns · Callus · Cracked Heels
Athletes Foot · Fungal Infections
Thickened Nails · In-growing Nails
Diabetic Foot Care · Verrucas
Nail Cutting · Nail Reconstruction

Contact Sharon on
01373 836734 or 07728 200402

Clinic appointments at
12 Sunny Hill, Nunney, BA11 4ND

Home visits also available

Chapmanslade Explorer Trail!

Wow! What an amazing event we had! We managed to raise £1,710 and had over 200 people attend the event! All proceeds will be split three ways: to the Church, school and village initiatives – that's £572.03 each.

Here's a just some of the feedback we received;

"The thought and preparation that went into this trail was unbelievable! Thank you so much for such a brilliant event - we all loved it "

"Thank you so much to all those who organised this. We had so much fun this afternoon, it was aimed perfectly for my four-year-old who had an absolute ball."

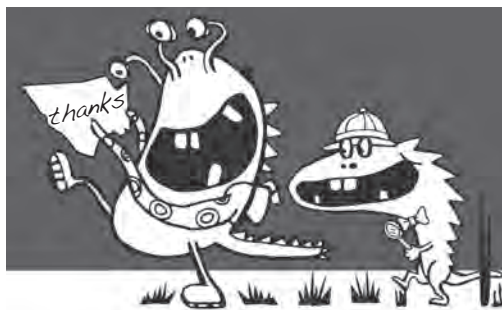
It was fantastic to see so many people coming together to give the explorers a fun day out and raise some money along the way.

I am so grateful to everyone who worked so hard in the run up to the event. It's been hard work at times but fantastic to see it all finally come together.

A big thank you to all who volunteered on the day, without you all it wouldn't have run so smoothly!

What fantastic dinosaurs and monsters were made – imagine all the effort that went into them! Thanks also to all those who created props and sounds around the village – they really created a great atmosphere for everyone that attended the event.

To anyone who made cakes for us to sell, thank you! We sold almost every single one which is great!



The raffle was a huge success, without the local businesses supporting it, it wouldn't have been possible. Thank you.

To the printers who very generously did all our printing at no charge – thank you! Without it we wouldn't have made the money we did! Thank you to Adam and Helen Brill for organising this.

The village hall committee also kindly let us use it for the day at no cost – thank you.

I sit on the steering group committee which was put together to create a questionnaire for all residents of Chapmanslade on behalf of the parish council (being delivered this month to your house). Out of the steering group has come lots of "Voice of the Village" initiatives and this event was one of them. Our aim was to bring the community together on a more collaborative fundraiser, show what beautiful countryside we live in and to raise some money. We all achieved this!

We would love to hear all constructive feedback that you have. This will really help when we do another 'explorer trail' next year. You can email exploretail@chapmanslade.org.uk with your comments or you can leave it in the feedback box at the pub

*Many thanks
Charlene Ridler*

Bob's bafflers

- 1 Now that Pluto is no longer recognised as a planet, which is the smallest planet in the solar system?
- 2 In which US State is the Grand Canyon to be found?
- 3 Cars bearing the international registration letters ET hail from which country?
- 4 In the nursery rhyme, for whom was the black sheep's second bag of wool?
- 5 What was the surname of the French brothers Etienne and Joseph who pioneered hot air balloon flights in 1783?
- 6 Football – where do West Ham United play their home games?
- 7 In the bible, which bird brought back a twig to Noah to signal the end of the flood?
- 8 On which US interstate highway did Chuck Berry get his kicks?
- 9 In the 'Wizard of Oz', what was the lion looking for?
- 10 In which Italian city is Shakespeare's 'Romeo and Juliet' set?
- 11 What sort of animal was Tarka?
- 12 Which American singer was married to Debbie Reynolds, Elizabeth Taylor and Connie Stevens?

Answers on page 44



Corsley Show 2017

Corsley Show Society Membership

Letters were sent to all 2016/17 and 2015/16 members in June along with application forms for membership for 2017/18 and tickets.

Where possible these were sent by email to reduce costs/administration and save them being lost!

An application form can also be found on page 35 in this edition of The Bridge or will be available to download from the Corsley Show website...

www.corsleyshow.org.uk/ticketsales.html

We do hope that as many local people will join as possible as your support to the Show is very important to its future.

Marion Moldon (Membership)

Help required!

Do you have an hour to spare to help out on the entry gates at this year's Corsley Show?

If so, please contact Treeve Moss on either 01373 832132 or email him at gatemanager@corsleyshow.org.uk

Your assistance will be very much appreciated and you will receive **FREE** entry to the Show!

UPVC REPAIRS WILTSHIRE.CO.UK

FOR PROFESSIONAL WINDOW & DOOR REPAIRS

Are you having a problem with your UPVC windows or doors?

- ✓ Misted glass
- ✓ Broken or faulty window hinges
- ✓ Faulty locks
- ✓ Jammed windows or doors
- ✓ UPVC door adjustments
- ✓ Window and door handles

Call us – we are here to help

All work guaranteed

01373 430010 07795 143228 www.upvcrepairswiltshire.co.uk

the three horseshoes

Open daily from 10AM-11PM
serving delicious home cooked food
(12-3, 6-10 Mon-Sat. & all day Sun.)

Enjoy a refreshing drink in our beer garden
with spectacular views of Longleat and Cley Hill,
or indulge with one of our regular meal deals
by the warm open fire on a bitter winter's day.

We organise monthly events,
featuring live music, comedy + much more!

follow us on Facebook for more details



threehorseshoeschapmanslade



BED & BREAKFAST, THE PADDOCK £55 A NIGHT

Situated in Corsley Village, quiet and secluded location.

The accommodation is self-contained and has its own entrance.

Shower room on the ground floor and lovely double bedroom
on the first floor. Breakfast is continental and served at a
table in your room.

Please call Jill & Malcolm Westgate on 01373 832125

To see more details visit

<http://jillianbrunning.wixsite.com/thepaddockcorsley>

YOGA CLASSES

Corsley Reading Room

Tuesdays 7-8.30 pm

Wednesdays 5.30-7 pm

(other classes also available)

Jackie Jasper

01373 832301 yogawithjackiej@gmail.com



**Shake off those pounds and
dance yourself fit.**

Chapmanslade Village Hall
Monday 7.30pm - 8.30pm

Longbridge Deverill Village Hall
Thursday 7pm - 8pm

For all levels of fitness and
NO experience needed.

For more information please contact
Amy 07830 119032

Busy Bees Pre-School Chapmanslade



For children aged 2-5 years
Weekdays (term time only) from 8 am-5 pm

Please contact Kelly Williams to arrange a
visit and a free trial session for your child
Breakfast club and after-school club available
(term time only)

Telephone 07749 257608
busybeespre-school@hotmail.co.uk

FENCING



Garden Fence Company
Garden fencing supplied and erected

- Repairs to existing fences
- Old fencing removed from site
- Hedges cut
- Small trees felled

For a friendly, cost effective and reliable
service contact Gerald Gasgoigne on:

07506 373335, 01373 822933
info@wessexgardenfencing.co.uk
www.wessexgardenfencing.co.uk

For your
Heating Oil Supplies
contact

KINCH FUELS

at their
local depot in
Devizes, Wiltshire

Telephone 01380 727102

*The company you and
your home will warm to*



LUXURY PRIVATE CAR HIRE

A locally based, door-to-door, personal
service for up to six passengers in
air conditioned comfort

AIRPORTS • SEAPORTS • ANYWHERE

For bookings, please call
01985 840088 07903 307734

WEST COUNTRY SWEEP

Domestic & Commercial Chimney Services

Andrew Leigh

07545 822109

westcountrysweep@gmail.com





Downlands TREE SURGERY

For Expert Tree Care

Telephone Jon Burgess on
01985 214320

Skilled pruning
Tree felling
Stump removal
Qualified and insured

**Free tree health
survey and quotes**

Keep active with physiotherapy

Alison Rossiter MCSP HPC

Chartered Physiotherapist

30 years experience in physiotherapy specialising in the treatment of muscle and joint problems. Helping people to improve their health and fitness through treatment, exercise and advice.

Home visits can be arranged.

Daytime and evening appointments available.

If you need help please contact:

Beckington Physiotherapy 01373 831483

Email: arossiterphysio@gmail.com

www.beckingtonphysio.co.uk

DAVID EDMUNDS & CO
ACCOUNTANTS & TAX CONSULTANTS

*Specialists in the self-employed, small and medium business and self assessment.
Preparation of accounts, VAT, PAYE, income tax and corporation tax returns.*

*Personal, friendly service
Evening appointments by arrangement*

Telephone 01225 334447

Home 01373 832430

**TREVOR
& JON** *by Amy*

Unisex Hair Salon

Unit 2 Stone Mill, Trowbridge BA14 8BU

01225 754001

trevorandjonbyamy@outlook.com

Kevin O'Mahony
Quality Painter and Decorator

Internal and external painting

Artexing

Wallpapering

Coving

Hand painted kitchen units

07724 349447 or 01985 301197

email kevo7743@googlemail.com

www.thewarminsterpainter.co.uk

Biology: changing the world

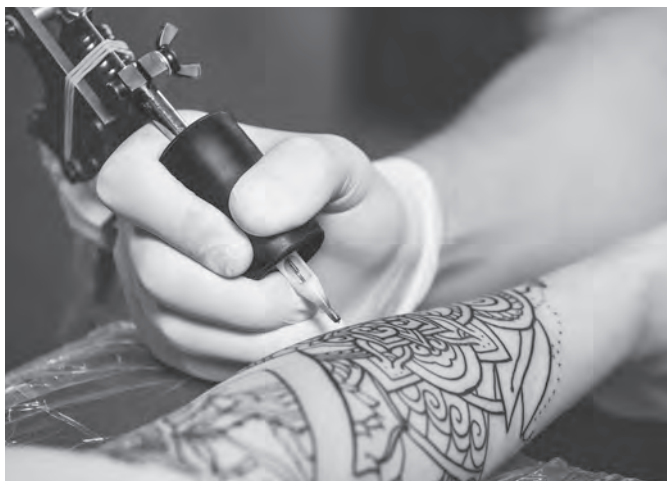
Getting a tattoo this summer?

Be careful what you wish for...

It's July and you may be planning on going abroad on holiday. While you are there, you may do things you wouldn't dream of doing at home. Some of these I will gloss over! However, it is surprising how many young, and not-so-young, people decide to get a tattoo while on holiday. Currently it is estimated that 10-15% of the population have a tattoo, the majority being between 18 and 40 years old. It could be warm, with most holiday makers showing plenty of bare skin, and you might think that it would be nice to decorate your arm, leg or shoulder with a tattoo.

But be warned, there is a risk! Tattoo parlours in the UK are very tightly regulated and they must abide by high standards of hygiene. Tattoo needles must be sterile, the inks must be sterile and non-allergenic, and advice on post-visit care is given. The tattoo will be wrapped and the area must be dealt with carefully until the many skin punctures required for a tattoo are closed or healed. The advice given by the tattooist should certainly be obeyed.

Sadly, not all countries have the same high standards as the UK. This means that if you are tattooed in a country without the



appropriate safeguards, you may suffer from skin infections or worse! In the 19th century gangrene, amputations and death were reported following tattooing among sailors. More recently, devastating necrotizing fasciitis (a "flesh-eating" infection) has been reported in New Zealand from traditional Samoan tattoos. So-called 'inoculation leprosy' still occurs in India due to roadside tattooists, and the disease may not be diagnosed for 10-20 years. Shop-based tattooists anywhere can cause infections if they do not obey high standards of hygiene.

There are also cases of folk ignoring advice and going swimming before their 'tat' is fully healed and, of course, swimming is a popular activity in a warm climate. In

a recent case, a man went swimming in the Gulf of Mexico within a week of being tattooed – he almost died of a *Vibrio* infection; *Pseudomonas* skin infections also occur. Even worse are infections delivered under the skin by a contaminated needle during tattooing. In 2004, subcutaneous infection with MRSA was reported in three US states. Viral warts and skin rashes are also sometimes seen. These often arise from self-tattooing, and in a recent study 12% of tattoo inks bought over the internet contained potentially pathogenic bacteria in unopened bottles. Such infections can cause quite devastating skin damage – and usually on areas you wish to be visible. That was why you had the tattoo in the first place, wasn't it?

If you wish to have a tattoo, be sensible. Have it done before you go, or check with the authorities locally about the regulation of tattoo parlours. Even then, make sure you obey the post-tattoo advice.

Nigel Brown is a retired Professor of Microbiology, now living in Chapmanslade. Nigel is happy to receive comments, questions and suggestions for future articles at nigelbrown48@gmail.com.

Jackdaw Plastering



Phone : 07504977650

Email : andy@jackdawplastering.com

Web : www.jackdawplastering.com

***Qualified *Insured *Clean *Reliable**

Chapmanslade Barbecue

Sunday 2nd July 12 noon

Join us for lunch and meet
friends old and new!

Lots of fun and games!
Kids races
Tug o'war
Egg throwing
Petting goats
Tea and cakes
and
lots more...!

Let us know if you would
like to help or to run a stall!

Contact Denise Page on
01373 832485 for more
information

Proceeds in aid of Chapmanslade Village Hall

ALLSOP CARPETS & FLOORING

DOMESTIC ♦ COMMERCIAL ♦ INDUSTRIAL

Christchurch Street West, Frome BA11 1EB

TEL: 01373 463866 MOBILE: 07887 953014

www.allsopcarpets.co.uk

Chapmanslade Village Hall

Can be hired for all your functions:
parties, weddings, meetings, classes, etc

For hiring information, phone
Ken Davies 01373 832034 or email
chapmansladehall@blueyonder.co.uk

Traditional Mole Catcher

07512 681111

01373 836350



KEYVOLUTION

Locksmith and
Carpentry Services
serving the Wiltshire Area

Warminster based company offering locksmith and carpentry.
Police cleared, reliable and honest service.

Any other quote beaten.

- BS3621 lock upgrades for house insurance approval
- Garage doors, locks and running gear
- Lock repairs – specialising in Chubb mortice locks
- Upvc double-glazed door and window locks fitted – even old ones!
- Door or window locks opened destructively or non-destructively (indemnity required for these services)
- Digital code locks supplied and fitted
- All types of carpentry work – mostly 2nd fix and maintenance

Check out my website

www.keyvolution.co.uk



or call Ben on 07748 214799 or 01985 219799

Hypnotherapy for you!

Solution Focused Hypnotherapy is a safe, practical
therapy and can help you to:

- Feel better about yourself
- Achieve work, play, lifestyle balance
- Improve many areas of your life

Fiona 07801 436633

fiona@balancehypnotherapy.co.uk

www.balancehypnotherapy.co.uk

Balance
Hypnotherapy
Solution Focused Hypnotherapy

White Horse Windows

Windows, Doors, Conservatories and
more...

Local Company, Exceptional Standards
10 year guarantee

Windows Fascia & Guttering
Doors Conservatories

CERTASS Registered

For a Free Quotation call Ryan on
07909 441442 or 01373 302594



nickcranston@acertreesurgeons.co.uk

www.acertreesurgeons.co.uk

01373 832026 or 07590 986261

85 High Street, Chapmanslade

- FREE advice and quotes from a friendly, professional and accredited company fully insured and Council approved
- We are highly skilled and qualified to undertake all tree work from fruit tree pruning to technical dismantling of huge tree structures near buildings as well as hedge trimming and care.
- We also sell logs!

BARTERS PLANT CENTRE

'Passionate about Plants'

Shrubs ♦ Perennials ♦ Trees ♦ Roses ♦ Conifers
Climbers ♦ Fruit Trees ♦ Hedging ♦ Soft Fruit ♦ Seeds
Bulbs ♦ Basket Plants ♦ Bedding ♦ Vegetable Plants
Christmas Trees ♦ Holly Wreaths
National Garden Gift Tokens



Opening Hours

Mon to Sat	9 - 5	(March to October)
Mon to Sat	9 - 4.30	(November to February)
Sun	10 - 4	(March to June + December)

Just off A36 in Chapmanslade, Wilts, BA13 4AL
01373 832694 www.barters.co.uk



JONATHAN CORP

Painter and Decorator
General House Maintenance
Sturford Mead Farm, Corsley
Warminster, Wiltshire, BA12 7QU
01373 832213

Postlebury News R Gould – Newsagent

All papers and magazines
Home delivery service

01749 850556 07979 452677

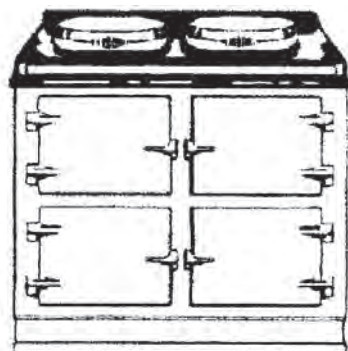


T A P Services

Telephone 01373 463106

tapservices@btinternet.com

Authorised Stanley Service Agent
Oil Range Cooker & Oil Boiler Servicing



Range Cooker Servicing

Corsley Parish Council

Parish Council Briefing

John Fairgrieve, rounds up the activities of the PC in June

One further Meeting was held in May to discuss a number of ongoing issues and raise some further points.

Footpaths

Alice Helliard gave a presentation to the PC dealing with proposals to divert footpaths that currently go through the middle of the High House Farm yard, converting existing permissive paths to Rights of Way and creating a new path to the north of the farmyard. The proposals would provide a better walking experience and at the same time make it safer for both walkers and farm workers. The proposals had been discussed with the Footpath Officer of Wiltshire County and had been approved. Longleat Estate are also happy with the proposals. It was agreed the PC would support the proposals.

Planning Applications

A number of planning applications were discussed as follows, all of which were supported by the PC:

03923 - Center Parcs

03495 - Harrowmint House,

04145 - Mews Cottage, Knapps Gate

A further Planning Application was reviewed by the PC as indicated:

011224 - Longleat Hotel. The applicant had provided supplementary information

to the original application covering Archaeology, Landscaping and an additional traffic analysis. Following considerable discussion it was agreed that whilst the new traffic proposals would improve the situation regarding the issues the PC had previously raised they still did not address the underlying areas of complaint and the PC stood by their original objection. It must be made clear that the objection is based purely on the proposed traffic flow solution provided as opposed to the building of the hotel and water park.

Temple Wooden Sign

The PC has been made aware that the wooden sign in Temple has finally fallen to the elements and is no longer viable. Discussion is currently taking place to resolve the most cost effective and aesthetic way to replace the sign. Further information will be devolved following the next meeting.

Bay Tree Close Development

It was confirmed that the planning application has been approved and that building was planned to start in Summer 2017 with occupancy in 2018. The PC discussed the allocation process for these properties and clarification was sought from Wiltshire Council on how these properties would be apportioned. Wiltshire Council policy on allocation of housing is as advised:

www.corsleyandthebridge.co.uk

Priority will be given to the following:

- Those aged 55 and over.
- Those who are current social housing tenants under occupying their current accommodation, and in hardship.
- Other families who have an identified need for ground floor accommodation.

Following bidding, the applicants will be prioritised as follows:

- 1 Connection to the Parish and aged 55 and over
- 2 Connection to the Parish and in need of ground floor accommodation
- 3 Connection to adjacent Parishes and aged 55 and over
- 4 Connection to adjacent Parishes and in need of ground floor accommodation
- 5 Connection to Wiltshire Councils Area and aged 55 and over
- 6 Connection to Wiltshire Councils Area and in need of ground floor accommodation
- 7 Band status (inclusive of under-occupation of current accommodation)
- 8 Effective date. (i.e. the date the applicant was placed within the respective band)
- 9 Affordability assessment.

Wiltshire Council have further advised the following:

In addition to the construction of the five bungalows, an foot path is to be made available to the recreation ground, bus stops installed on the A362 in proximity to the site entrance and the existing crossing refuge will be upgraded.

Should you wish for more details on the development, please contact Andrew Mead, Commissioning Officer on 01225 716672 or AndrewM.Mead@Wiltshire.gov.uk

Neighbourhood Watch

Corsley is currently without a Neighbourhood Watch Coordinator and a volunteer is sought for this extremely

valuable and important voluntary role. The major object of the task is to act as a link between the village and the local Police to ensure that our security and crime concerns are fully represented in the appropriate places and to receive information for dissemination to the Village. The Neighbourhood Watch scheme is regarded as one of the major success stories of the last 20 years or so in combating local crime.

In an ideal world the coordinator would set up a team covering the various hamlets in the Village to ensure that the best local vigilance is maintained and specific concerns are properly represented. It does not require any sort of 'vigilante' mentality or putting oneself at risk on the streets, rather than encouragement and communication to help vulnerable individuals to keep as safe as possible.

If there is anyone out there who would like to know more, particularly some idea of the likely commitment required then please let me know.

Smart Water

There is a very good deal on offer through Neighbourhood Watch for "Smart Water". We do not currently have a person responsible for NW in Corsley but Hugh Deed has agreed to try and get us registered to be able to take advantage of this scheme. Time is very tight and if we are successful then a notice will be posted to The Bridge website with more details and actions required. The special offer closes on July 7th and is very much cheaper than the normal price.

Future meetings 2017

Quarterly Meeting	4 September, 7.30 pm
Quarterly Meeting	4 December, 7.30 pm

There may be occasional meetings at short notice; please see the village noticeboards.



Clean-it

Recommended by



Carpet and upholstery cleaning specialist

01373 462059 07779 247961 www.clean-it.biz

Home ~ Private ~ Lettings

15%
Minimum
Savings

Garston
Veterinary Group



Spread the cost of your
pet's preventative
healthcare into affordable
monthly payments

Our Wellness Plan has been specifically designed so that your pet receives all of the essential vaccinations and parasite treatments and also a whole range of additional benefits to help ensure that they remain in the best possible health.

Cats £10.30
per month

Dogs from £12.50
per month *

*please contact one of the surgeries for specific prices for your dog. Prices are based on adult weight.

wellness@garstonvets.co.uk

Frome | Melksham | Trowbridge | Warminster | Westbury
01373 452225 | 01225 617779 | 01225 754021 | 01985 213350 | 01373 301448



www.garstonvets.co.uk



Domestic Appliance Sales and Repair Service

Domesticare

21 Keyford, Frome

www.domesticarefrome.co.uk



01373 467351

Childminder

Ofsted registered

Full and part time. Before and after school
Holiday spaces available

Pick-up and drop-off offered

Call 01373 832854 or 07883 025476
d.m.rawlings@outlook.com

JERRY RAYNER
boiler maintenance

01985 841461 or 07775 755981

FOR SERVICING AND BREAKDOWN
OF OIL BOILERS
also AGA and RAYBURN

- Competitive rates
- Friendly, helpful and efficient
- Call now for a quote



**STONE &
BRICKWORK
SPECIALISTS**

Tel: 07970 513233

Email: terry@rocketmasonry.co.uk

www.rocketmasonry.co.uk

DRIVE IN AND PICK YOUR OWN FIREWOOD LOGS

**Woodchip, Mulch,
Hardwood Logs,
Softwood Logs,
Kindling, House
Coal.**

Delivery available.



Mon to Thurs: 7.30am - 4.15pm Fridays: 7.30am - 3.15pm
Closed on Sundays & Bank Holidays

Open Saturdays **from Sep-Mar: 8.00 am to 12.00 pm**

☎ 01985 213507 🌐 www.longleatforestry.co.uk



**LONGLEAT
FORESTRY**

The Aviva Community Fund offers you the chance to get funding for an important cause in your community.

Open to everyone - we want you to enter a project for your community and tell us what a difference these much-needed funds could make.

Get enough votes from friends, family and supporters in your community and your project could be entered into the Finals, where a judging panel will award the funds.

About the awards

We believe good projects come in all shapes and sizes. So the best way to support a variety is to let both large and small projects share the funding.

The Aviva Community Fund will finance over 800 projects across four different fund levels and six categories, spreading our awards to communities throughout the UK.

If your project gets among the most votes and wows our judges, it will be in with a chance of receiving those much-needed funds.



www.avivacommunityfund.co.uk

DebbieDetox™

Believing in You

Magic Movers

Fitness fun for Everyone

For all ages and all abilities

What does the class involve?

- Warm up and mobility section
- Aerobic workout
- Muscular strength and endurance section – for your bottom, legs, back, core, arms and abdominals
- A lovely cool down and flexibility section – aimed to relax and relieve body tension
- Burns up to 600kcal per class

Come and give it a go...

£4 session trial prices

Chapmanslade Village Hall

Mondays in July at 2pm

If you are interested, please contact debbie on 07707 215591 or email debbiedetox@live.co.uk



24hr Domestic or Commercial
Emergency Entry
Lock Repair or Replacement
Duplicate Keys Cut

Is your Home Insurance valid?

Are your possessions at risk?

*If your locks are not insurance
approved, the answer might shock you.*

For a no obligation inspection:

01373 470171 or 07713 903983

phil@locallocksmith.org.uk

www.locallocksmith.org.uk

DBS Checked and uniformed

Cross Keys

Community Free House

Lyes Green, Corsley, BA12 7PB

Open all day!

Bar

Food

Monday to Saturday

11 am - 11 pm

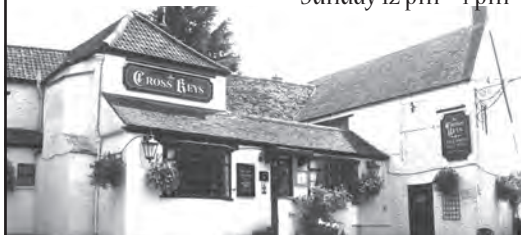
Sunday 11 am - 10 pm

Monday to Saturday

12 pm - 2.30 pm and

6 pm - 9 pm

Sunday 12 pm - 4 pm



01373 832406

www.crosskeyscorsley.co.uk

Facebook @CrossKeysInnCorsley

Corsley Tennis Club



New members welcome –

all ages, all abilities

Three hard courts available all year

Weekly junior coaching available

Low subscriptions

Contact either

Emma Fox 07512 009580

Sue Newell 01373 825560

www.corsley-tennis.uk

Little Cuckoo's Pre-School

Lyes Green, Corsley, BA12 7QH

Friendly, dedicated pre-school in the heart of the
countryside for children aged 2-5 years

Monday, Wednesday, Thursday and Friday

9 am - 3 pm during term-times

We accept 2-year-old funding in
accordance with Wiltshire Council guidelines

Mother and Toddler group Tuesday mornings

10 am - 11.30 am during term-times

SESSIONS AVAILABLE NOW

Speak to Hayley McMahon

Pre-School Manager on 01373 832298

Find us on facebook or visit www.littlecuckoos.co.uk

A free trial session is available

Registered Charity Number 1064800



CHRIS SEVIOUR

Building Services

07894 708949

cmseviour@gmail.com

Roofing, Loft conversions,
Extensions, Plastering,
Natural stonework



S B Services



Contact Sean

07828 671566

*For your garden maintenance
and home improvements*

Seven Open Doors

Dear Friends,

I confess to feeling a little daunted at the prospect of writing this letter; over the last few months I seem to be talking about the same things as our country lurches from crisis to crisis. Over the years I've produced monthly parish magazine letters peppered now and again with ones that alluded to natural disasters or occasions of particular national interest, but I don't think I've ever had to respond month after month to what seems like ever deepening chaos. Nothing seems certain any more, we cannot rely on ways of thinking and being that have maintained at least a semblance of relative stability and normality over the last decade or so. Having said that 'normality' is probably just a euphemism for 'lets pretend it's all ok when really we know it's not' kind of thing.

Coupled with this political confusion our hearts go out to those affected by the recent terrorist attacks; what can we say in response to such terrible violence? What can we do? Such events leave us feeling violated and helpless, full of grief and sorrow for those whose lives have been torn apart. And yet, what has emerged more powerfully than anything else in the communities that have experienced these atrocities, and in the country as a whole, is a collective refusal to be cowed by such horror, a determination to respond to violence with love, openness and human compassion.

In his response to the attack at Borough Market the Archbishop of Canterbury Justin Welby said: 'The terrorists want to divide us, they want to make us hate one another. They want to change our way of life. We must go on being profoundly and deeply hospitable --- we mustn't turn against people because of their faith or their category.' Asked whether he feared there may be a backlash against the Muslim community the Archbishop replied: 'I am anxious about that, yes,' --- 'Anyone who thinks of that, saying anything insulting on the tube or the bus, or in the street, let alone attacking a mosque, or something like that, they need to remember that if they do that, the terrorists give them a triple cheer. Because they are doing exactly what the terrorists want them to.'

Jesus said 'Blessed are the peacemakers for they will be called children of God'. More than ever in our society and in our world we need peacemakers. As I go about my daily life in this beautiful place I do not encounter many people of differing faith to mine, but I can try to meet any expressions of hatred or revenge towards our Muslim brothers and sisters with a call for solidarity, support and ultimately human love and understanding. And I will go on praying for peace.

I wrote the above before the terrible events at Grenfell Tower and I only have time to add little postscript. Our hearts go out to those affected, to the emergency services and to the whole community. Once again we see the love and generosity of the human spirit. We hold them all in our thoughts and our prayers

Love and prayers, Pauline

July Church Diary

Sunday 2nd July: Trinity 3

8am at St Michael the Archangel, Brixton Deverill: 1662 BCP Communion

9.30am at St Margaret of Antioch, Corsley: Eucharist

10.30am at St Peter & St Paul's, Longbridge Deverill: Morning Worship



Tuesday 4th July

7.30pm at 93 Lyes Green, Corsley

After Alpha Home Group - details from Richard on 832594



Sunday 9th July: Trinity 4

9.30am at St Philip & St James', Chapmanslade: Family Holy Communion

10.30am at St Mary the Virgin, Kingston Deverill: Eucharist

11am at St Mary's, Temple, Corsley: Matins

11.15am at St John the Baptist, Horningsham: Village Re-union Service



Wednesday 12th July

7.30pm at St Margaret of Antioch, Corsley

Parochial Church Council - details from Phil on 832845



Sunday 16th July: Trinity 5

9am at St Mary's, Temple, Corsley: 1662 BCP Holy Communion

10.30 at St Michael the Archangel, Brixton Deverill: Eucharist

10.30 at St Margaret of Antioch, Corsley: Family Worship



Thursday 20th July

10am to 12pm at the Three Horseshoes, Chapmanslade
Church & Community Coffee Morning



Sunday 23rd July: Trinity 6

9.30am at St Philip & St James, Chapmanslade: Eucharist

10.30am at St Peter & St Paul's, Longbridge Deverill: Eucharist

Sunday 30th July: Trinity 7

10.30am at St Peter & St Paul's, Longbridge Deverill: Benefice Eucharist



Sunday 6th August: Trinity 8

8am at St Mary the Virgin, Kingston Deverill: 1662 BCP Communion

9.30am at St Margaret of Antioch, Corsley: Eucharist

10.30am at St Peter & St Paul's, Longbridge Deverill: Family Worship

Songs of Praise and Lunch – August 27th

We shall be holding a 'Songs of Praise' service at the Corsley Showground at 11am on the 27th of August. The service will be followed by a Bring & Share Lunch at the Showground. Please do come along and sing your favourite hymns and enjoy a buffet lunch.

Fundraising

Our stall at the Corsley Show will be 'The Farmhouse Kitchen'. We shall be selling lots of local produce – cakes, tarts, flans, vegetables, jams, eggs and cheese. If you can donate some produce for the stall please contact either Phil on 832230, Stella on 832230 or Judith on 832803. We shall also run a raffle and we shall be pleased to receive any prizes for the raffle. There will be no bric-a-brac stall this year.

Welcome, Congratulations & Farewell

Congratulations to Samuel Baggs and Hannah Gay who were married at Corsley on 24th June.

The funeral of Margaret Wigley took place at Chapmanslade on 5th June. We offer our prayers and sympathy to her family.

Explorer Day

Saturday 10th June saw Chapmanslade High Street and the surrounding footpaths filled with people following the Dinosaur Explorer trail. There were almost twenty dinosaurs in the High Street including one with a nest complete with eggs in the churchyard! It was marvellous to have the church filled throughout the day where families could play games, colour dinosaurs and collect their special trail stickers as well as enjoy light refreshments. A great success and the church will be receiving £570 from the day's activities.

Parish Contacts for Corsley and Chapmanslade

Rural Dean	Rev Pauline Reid revpauline@btinternet.com	01985 841290
Lay Pastoral Assistants	Richard Dean Barbara Hughes Claire Tanner	01373 832594 01373 832273 01985 218099
Pastoral Visitor	Alan Hopkinson	01373 832393
Churchwardens	Ian Buick John Helliar	01373 832318 01373 832803
Deputy Churchwardens		
St Margaret's	Judith Helliar	01373 832803
St Mary's	Harcourt Gough	01373 832039
St Philip & St James'	Janet Aylesbury	01373 832752
PCC Secretary	Phil Jefferson	01373 832845
PCC Minute Secretary	Sue Fear	01373 832074
PCC Treasurer	Keith Muston	01373 832755
Planned Giving Officer	Judith Helliar	01373 832803
Choir Leaders	Marion Muston Claire Tanner	01373 832755 01985 218099
Tower Captain	Marion Moldon	01373 832672
Electoral Roll	Di Britten	01383 832515
50/50 Club	Neil Britten	01373 832515
Benefice Administrator and Safeguarding Officer	Marion Muston cleyhillchurches@gmail.com	01373 839026 01373 832755
Benefice Safeguarding Officer	Marion Muston	01373 839026
Time to Think Home Group	Phil Jefferson	01373 832845
After Alpha Home Group	Richard Dean	01373 832594
Light Bites Lunches	Maureen Willcox	01373 832171
Benefice Webmaster	Ian Buick	01373 832318

Copy for Seven Open Doors should be sent to Keith Muston at
themustons@btinternet.com subject 7ODs or phone 01373 832755.

If you would like to receive weekly news of Church events and activities, please
send your email address to the above, with subject 'Through the Open Doors' or
download a pdf from the 'churches' pages at www.corsleyandthebridge.co.uk

Expert repairs for
PCs & Laptops
Macs
iPads
Tablets



Frometech

Tuition available
Macs, PCs and iPads

Take the stress out of IT
Call Today!

Security Review of
your computer

01373 470170
www.frometech.co.uk

Registered Osteopath

Philip Sefton D.O.

‘Treatment from head to toe’

Over 20 years' experience of treating back,
neck, shoulder, muscular and joint pain

Manor Road · Marston Estate · Frome · BA11 4BN

01373 455993 www.phillseftonosteopath.co.uk

Ski Apartment – French Alps

Ski in/ski out – sleeps 6

Well equipped – immaculate condition

For more information or to book online visit:

w. www.ski-les-cimes.co.uk

f. facebook.com/ski.les.cimes

e. lesleygolledge@gmail.com

t. 01373 832533

npv plumbing & heating

Installation • Servicing • Repairs

Bathroom and tiling specialists

All plumbing and heating work undertaken

Our fully qualified plumbers offer all general
plumbing services from boilers to bathrooms.
We will gladly advise clients on the most suitable
products for their property – be it heating
systems, boilers, radiators, bathrooms or showers.

07738 940355

www.plumbersfrome.co.uk

Hypnotherapy

If you need help with:

Anxiety

Depression

Phobias (such as flying or spiders)

Panic attacks

Relaxation

Weight management

Smoking cessation

Natural childbirth

Confidence

Public speaking

Exam nerves

and much, much more...

Call ANJI HOLLAND on
07944 647 978 / 01373 832 898
to enquire or just for a chat

www.hollandhypnotherapy.com

With practices in Chapmanslade and Bath

I am a member of the National Council for Hypnotherapists
and am bound by their code of practice and ethics

June news



Carol Seward rounds up the June meeting and announces some forthcoming events

'Ladies of the Court' was the curious title of the talk given to members of Corsley WI at the June meeting. In fact it was about loyalty and intrigue and the ladies were part of Napoleon's entourage after Waterloo. Another title could have been 'It's a Very, Very Small World'!

With the help of pictures, drawings and portraits, Andrew Campbell showed us how Napoleon, after his abdication, was involved with three ladies. Hortense De Beauharnais was the wife of Napoleon's brother, King Louis of Holland, Fanny Dillon was the wife of Comte Henri de Bertrand and then there was Albine De Vassal, whose third husband was Marquis Charles Tristan De Montholon-Semonville. Andrew explained how all these people's lives were somehow intertwined and gave us a very humorous account of some of the events of the time. Judith Helliard gave the vote of thanks.

The competition for a fan was won by Carol Seward, with Eve Tigwell second and Val Sandoe third.

The Wiltshire Federation has organised more events for us to attend, including a visit to a turkey farm, tablet and laptop workshops and a stained glass workshop. Full details are available at our next meeting. The outing to Windsor unfortunately had to be cancelled due to a double booking by the coach company, so we are off to Weymouth by train instead.

Members were reminded that we have our own WI Flower, Handicraft & Produce Show

in August and schedules are available. A letter is also being given to all members asking for their views on the future of the Rose Bowl and the A W Carter Perpetual Challenge Shield.

At the meeting on Thursday 13th July 2017, Richard Dean will give a talk about Corsley's links with South Sudan, at 7.30pm in Corsley Reading Room. This is an open meeting so everyone is welcome to come.

You don't have to be able to bake cakes, make jam or be a whiz at crafts to join us at WI, we would much rather have your company! Our speakers each month cover a wide variety of subjects, which help us learn new things. We shall soon be finding out how to wrap up beautiful presents, how to decorate celebration cakes and practice some Tai Chi. Corsley WI members also have the chance each year to win a bursary to attend a weekend course at Denman College with tuition by expert tutors. Why not come and visit us at any of our meetings, held on the second Thursday of the month in the Reading Room at Corsley? The exact times are mentioned in this monthly WI meeting report and also in The Bridge Diary Dates or ring Carol Seward on 01373 832446 for information.

Would you like to learn bridge, come with us on garden visits or join us for a pub lunch once a month? These events are not just for WI members. If you would like further details please contact Pauline Scott on 01985 215760, as the venues vary each month.



Cross Keys News

Corsley's very own community-owned
free house

On the 10th June we celebrated the first year anniversary of The Cross Keys becoming a community-owned free house. Ped unveiled the new pub sign that he had designed and made and wished Sara and Rob, the newly appointed managers, every success for many years to come.

A raffle was held in aid of a defibrillator that we hope to have installed at the pub soon. The sum of £131 was raised and our thanks go to suppliers and customers who generously donated prizes.

We will continue to have a **Quiz Night** on the **last Sunday of each month**, starting at 6pm; a maximum of 5 people per team at a cost of £2 per person. Book your place for **Sunday 30th July**. There is the option to enjoy a light supper of chips and sandwiches for a slightly higher cost of £5 per person. Please let Sara or Rob know if you'd like this when booking.

Sara is continuing to produce lovely meals at reasonable prices; Jason has returned to the kitchen of the Cross Keys and they will be running **themed nights** on the **third Monday of every month**. The first will be on **Monday 17th July** and is likely to be a curry night. Please check our website

and Facebook page for details. Smaller portions are always available for children and those with lighter appetites.

Thanks to the hard work of local volunteers, the garden is looking lovely. The summer opening hours have been extended and we're now open until **10pm on Sunday** evenings – a perfect opportunity to enjoy a tipple at the end of the weekend!

Opening hours

Monday to Saturday – 11am to 11pm
Sunday – 11am to 10pm

Food served

Monday to Saturday – 12 noon to 2.30pm
and 6pm to 9pm
Sunday – 12 noon to 4pm

Keep checking the website www.crosskeyscorsley.co.uk or our Facebook page Cross Keys Inn Corsley for forthcoming events and news. Alternatively, contact the pub on 01373 832406 to book a table. We look forward to seeing you soon!

A special request

Each of our hamlets is proudly marked by a large sandstone plinth, some of which get rather overgrown with grass, weeds and ivy.

The Parish Council would really appreciate it if a family or individual living close to the stone could keep it clear of vegetation.

Suggestions as to how we make the lettering more visible would be very welcome!

Judith Helliar
Vice Chairman Corsley Parish Council

Chapmanslade Motor Services

**Vehicle repair
and servicing**

**Brake
specialist**

**MOT preparation
and repairs**



**Batteries
Exhausts
Tyres**



Quality service at competitive rates

FREE ~ wheel balancing and tracking with new tyres

FREE ~ courtesy car

Electronic diagnostics available – most makes covered

Green Farm Industrial Estate, Chapmanslade

01373 832188 or 07711 256927





**01373
455911**

CLEANING & MAINTENANCE 2000 LTD

OUR SERVICES INCLUDE

- Domestic Cleaning
- Commercial Cleaning
- Upholstery Cleaning
 - Carpet Cleaning
- One off Spring Cleans
- Garden Maintenance
 - Home & Garden Clearance

 www.busybees2000.co.uk 
info@busybees2000.co.uk

JOHN E S JONES

**GENERAL
BUILDER**



Carpentry, painting and
decorating, extensions, uPVC,
facias and gutters, fencing,
decking and patios

Also general repairs

Telephone 01373 832600

Mobile 07074 832600

Go on, get outside and get messy in the sunshine!

Gardening with children

There's so much to look at like different leaf-shapes, stuff to mess around with like squidgy soil and lots to learn, like how big plants grow from tiny seeds.

Children's gardening activities are all about learning and fun, rolled into one, and there are lots of projects you can do with them that they'll love.

If you can, set aside a garden bed, pot or container they can call their own.

Bedding plants are a great way for kids to learn all about planting and they're ready to pop in the ground when you buy them, so there's not much work to do. Why not try vegetables and herbs too?

There are lots of different types of soil – clay, sandy, silty, chalky, peat and loam. (Loam is a mixture of clay, sandy and silty elements.)

So how do you tell them apart? Finding out can be messy fun!

You can tell a clay soil by taking a small amount and rubbing it between your palms – if it forms a ball, you've got clay.

If you have a sandy soil it'll feel gritty when you rub it between your hands. A silty soil (one with finer, gritty particles of clay and sand) will feel quite silky.

A chalky soil will easily crumble between your fingers and may have bright white stones in it. Why not go out into your garden with the kids and try it today?

Give them serious tools. Cheap plastic child's gardening tools are worse than no tools at all; they break easily and frustrate the user. It can be hard to locate good tools for kids, especially work gloves that fit a small hand. With some garden tools, like a hoe or spade, you can easily saw the handle shorter. Let them use your tools if need be; in this way you're acknowledging the importance of the work they're doing.

The best time to engage children in gardening is when they're in the mood for this activity. If their attention wanes, or the garden tasks become boring, let them build a scarecrow. This activity is still a contribution to the gardening effort and adds another layer of interest to the garden scene. It also reminds the child of the importance of the garden crops.

Remember when giving 'garden tours' to your friends, be sure to point out the children's flower beds. Take a photo of their harvest and send it to the grandparents. The attention given to their work is the best motivator for children to stay involved with a project. Have fun in your garden's this Summer.

Rob White

Acres Supply Garden Centre, Corsley



TEA & sympathy

Considerate catering at a difficult time

All our food is homemade, we provide delicious teas, sandwiches and cakes through to more elaborate options.

We offer a truly bespoke, caring and professional service.



Telephone Kim Clark on 01373 832151 or 07843 056916

e-mail kim@teaandsympathy.uk.com

www.teaandsympathy.uk.com

CHANTRY CONSTRUCTION

stone walling • patios

drives • extensions

prompt reliable service

mini digger and driver for hire

01373 836787 07855 343388

COMPUTER & LAPTOP REPAIRS
UPGRADES / SYSTEMS & LAPTOPS

VIRUS REMOVAL / BROADBAND
WIRELESS / NETWORKING

nts
COMPUTING

FAST, FRIENDLY, PROFESSIONAL SERVICE
COMPETITIVE RATES
ONSITE OR WORKSHOP

CCO CompTIA

call
01373 302901

www.ntscomputing.co.uk
help@ntscomputing.co.uk

LAPTOP REPAIRS

We also replace
laptop screens,
keyboards,
CD-DVD drives,
fix overheating
and more

Forget-me-not 

• GARDENING SERVICE •



Weeding, pruning, planting,
fence painting, etc

01373 464416

07890 850465

Do you need a
plumber? Call...



Paul Antell Plumbing

07890 366832

01373 467427

Professional, reliable, friendly and local
paulantellplumbing@talktalk.net
www.paulantellplumbing.co.uk



www.darchoil.com

BOILER SERVICING & REPAIR

**All our technicians are
OFTEC registered and approved**

Call us on **01935 473302** for an instant quote or visit www.darchoil.com, fill out the form and one of our team will call you back during office hours

- Boiler servicing on-demand or as part of a Contract Service Agreement
- Servicing of oil, commercial and domestic boilers undertaken
- Group discounts available on request – call us for information

Call us on **01935 473302** or email **info@darchoil.co.uk** for more information

EVERGREEN GARDEN SERVICES

Garden maintenance and landscaping, lawns, strimming, hedging, pruning long and short term maintenance, patios fencing, turf and seeding.

Over 20 years experience in horticulture, landscaping and estate management.

Contact Ben Hale

01373 825495

07879 492283



Rose Knight



Dog and cat
minding service

01373 464904

07773 435254

knight_rosemary@sky.com



Seasoned Logs

free local delivery

Tel / text Garry on 07801 179917
loads from £110.00

James, Rob and Adam former Employees of
ROGER PATCH LIMITED
Are pleased to introduce:-

CMP COMPLETE LIMITED
GENERAL BUILDERS

19 Swaledale Road, Warminster, BA12 8FH

Contact James: 07801 868288

Email: cmpcompleteltd@gmail.com

Chapmanslade Parish Council

Parish Council Briefing

Keith Muston reports on the parish council's June meeting

A brief synopsis of our meeting.

Explorer Trail

Charlene Ridler was present and gave a brief report of the excellent Explorer Trail held on June 11th. Very well organised and attended and produced just over £1700 which will benefit the PTFA, the church, and the Voice of the Village initiative. The indications are that there will be a similar event next year. The meeting thanked Charlene and her team for such a successful event.

Lorry Watch

We have made enquiries of the Bradford-on-Avon Lorry Watch and Phil Holihead proposed that we continue, until the signage issue has been resolved, as an 'unofficial' scheme as this appears to offer more flexibility, and the meeting agreed to the proposal. Terry Rose continues to record transgressions and makes contact where possible with the operating company. These contacts are usually positive.

Weight restriction

Following further communication with Wiltshire Council the meeting agreed to respond both to Wiltshire Council and Highways England regarding the ineffective

signage at the slip road on the A36. We shall offer as further evidence of the problem the example of when a 44tonne lorry and trailer was observed trying to reverse back down the slip road having realised that the A3098 towards Frome had an 18t restriction. This operation resulted in paralysis at the junction in all directions and was clearly hazardous.

Village Plan

Prior to the Council meeting Adam Oakley and team met with their team of volunteers and handed out the Village Plan Questionnaire for distribution to every house in the village. We are hoping to obtain the views of everyone over the age of eleven in the village. Please do take part in this exercise so that we can discover the issues that are important to our village.

Sienna's Valley

The Enforcement Officer from Wiltshire Council has visited the site and his judgment is that all the conditions of the enforcement notice have been complied with. The meeting was asked if they were aware of any outstanding issues and as there were none the meeting concluded that this long-running saga was now at an end.

www.chapmanslade.org.uk

Co-option of new Councillor

At the May council elections we welcomed two new Councillors but there was still a vacancy for one Councillor. I am delighted to report that Charlene Ridler volunteered to be a Councillor and she was duly co-opted by the meeting. We are very pleased to welcome her to the Council and we know from her work on the Explorer Trail and as a member of the Village Plan Steering Committee that she has great enthusiasm to improve our village.

Planning Application

There were two applications before the council. The first was for a change of use of the garage to living accommodation at 68a High Street. The original planning condition had a restriction relating to availability of parking and the Council agreed to respond with no objections subject to Highways having no objection to the removal of the original restriction.

The second planning application was for a new stable block south of the cricket club and there were no objections from the Council.

Highways

Two issues were raised at the meeting. We continue to have problems with ineffective gullies and the Chairman will make further representation to Wiltshire Council. The other issue was the cutting of the grass at the lay-by. The Chairman reported that this area of grass is not on the schedule for grass cutting and he will discuss further with Wiltshire Council.

Neighbourhood Watch

Can I remind you that we are approaching the time of year when seasonal visitors come to our area, and historically petty theft especially from garden sheds increases.

Please ensure that your shed and gardens are as secure as they can be. Remember to report any crime by ringing 101. A Neighbourhood Watch coordinator is still required for Brimhill Rise; contact Phil Holihead if you would like to know more.

Speeding

We continue to operate a village Speed Watch team but during the summer period we struggle to have enough volunteers available. If you might be able to help would you please contact Phil Holihead. There was discussion about new speed warning signs now in use in Brixton Deverill, Codford and Shrewton which show the vehicle speed and depending on whether you comply with the speed limit either thanks you or requests you to slow down!! Phil Holihead reported that they cost about £2,800 each. The feeling of the meeting was that this might be a future investment by the village, should the Village Plan questionnaire show a positive desire for more action as regards speeding.

Keith Muston, Chair
01373 832755

themustons@btinternet.com

Your Local Electrical and Property Services

Call or email now for a free quote
01373 464577
enquiries@lawrencefairfield.co.uk

**LAWRENCE
FAIRFIELD**
Limited



www.lawrencefairfield.co.uk

Can you help us to build a better future for your air ambulance?

Wiltshire Air Ambulance has been saving lives for over 27 years and work has begun on our new airbase at Semington, near Melksham.

The new airbase will bring together our helicopter, aircrew and charity team onto one site for the first time.

The central location of our new airbase will mean our helicopter will be able to reach all parts of Wiltshire within 11 minutes, as it currently does now from its base in Devizes.

Our fundraising appeal for the new airbase has got off to a flying start, but we still need to raise just under £1 million to complete the building and equipping of it.

Can you help us raise the vital funds for our Airbase Appeal? There are lots of different ways you can get involved, such as holding a cake sale, organising a challenge event or uploading a photo for our helicopter mosaic. We also have fun ways for schools and businesses to get on-board and support our appeal.

Find out more by visiting our website www.wiltshireairbaseappeal.co.uk, call the Charity Team office on 01380 739453 or email hello@wiltshireairambulance.co.uk



Corsley Show

This year's Charity Class is in aid of the Wiltshire Air Ambulance!

Help support this amazing service by entering this fun class. The visiting public 'vote' for the best one by donating money to their favourite exhibit. The exhibitor with the most donated money wins! All money donated goes straight to the Wiltshire Air Ambulance. The more exhibits we have, the more money we'll be able to send them. So get creative with a hat and help us raise loads of money for this crucial service.

Class 194

A decorated helmet/helmet shape/ builder's hard hat/riding hat – let your imagination run wild! Your hat can be up to 28"/70cm, to be displayed on a table or hung up

All money, including entry fees, will go to the Wiltshire Air Ambulance.

This Class will be judged by everyone visiting the show. The winning exhibit will be that which attracts most money from the general public by 4 pm on Show Day.

Prize

A selection of wines generously donated by Morrisons Supermarket, Warminster

Visit http://www.corsleyshow.org.uk/handc_main.php see Division X (Extra Classes) for information on how to enter this and other great classes.



Application for membership of Corsley Show Society and tickets for 2017 Show

PLEASE COMPLETE USING CAPITALS

Main member title: Mr/Mrs/Miss/Ms/other (please specify)

Main member* first name.....

Main member surname

Address

Postcode.....Telephone.....

Main member email address

*The 'main member' is the person to whom all communications will be sent and a membership card * issued along with the appropriate number of entry tickets. Please note that entry to the Show will be by ticket only, not by membership card this year.*

* If other adults included want to have membership cards in their own right then please tick here ☐ and detail their names below. Such named people are also entitled to attend the AGM.

.....

.....

Extra entry tickets required (please return no later than Monday 31st July 2017)

Ticket type	Cost each	Number Req'd	Total cost
Family ticket (1 or 2 members and up to 3 children)	£13		
Adult members and adults/seniors	£5		
Children (aged 7 to 16)	£2		
Children (aged 6 and under)	FREE!		
Donation (optional)			
* Please make cheques payable to 'Corsley Show Society'			
		Total cost	

Please tick any boxes that apply:

☐ Please contact me as I may be able to find a sponsor

☐ Please contact me about assisting in some way on the day or before/after.

Please return your completed form (a SAE appreciated) with cheque/cash for the total amount to: M Moldon, Membership Secretary, Fordwater, Lane End, Corsley, BA12 7PG

The information you supply on this form will be held on a computer and used in connection with administering membership (and associated tickets) of the Corsley Show Society/Corsley Show Limited. Your information will not be passed to a third party.

Membership is governed by the Constitution of the Corsley Show Society and its conditions.

The Constitution is available at www.corsleyshow.org.uk/ticketsales.html.

Steve Dayman-Johns

Driving Instructor

Condensed Courses and
Gift Vouchers available

Tel 01373 865422 - Mob 07730 445648

email stevekdj@gmail.com



Cost-effective, no-nonsense, efficient accounting, bookkeeping, VAT, payroll and CIS solutions for sole traders and Limited Companies.

Self-assessment and taxation services also available.

- ▶ Fixed fees agreed in advance
- ▶ Free initial consultation
- ▶ Westbury office with free parking

Contact Jackie Welch

01373 822363 or **07790 325321**

jackie@jmwaccounting.co.uk

www.jmwaccounting.co.uk

M W Garden Services

20+ years experience

A tailor made service for all types of garden maintenance

Insured and CBI's checked

mark22.weaver@mypostoffice.co.uk

Telephone 01373 832854

Mobile 07921 818452

Piano Lessons

All standards welcome

Debbie Rickhuss

Teacher of Pianoforte and Theory

Contact 01373 832829

07747 499990

rickhuss@tiscali.co.uk

Dashing Dusters

- Cleaning and ironing to a high standard
- General domestic assistance
- Commercial cleaning
- Reliable
- Reasonable rates
- References available

01373 832484 (evenings)

Hardwood logs for sale

(cut to size if required)

FREE DELIVERY

R M Log Supplies

Beckington

Call Robin on

07876 621929

Whitbourne Chapel

"Come to me, all you who are weary and burdened, and I will give you rest."
Matt 11:28

*"If all the year were playing holidays"
If all the year were playing holidays,
To sport would be as tedious as to work;
But when they seldom come, they wished for
come...*

My wife has often reminded me of these words from Shakespeare's 'Henry IV' and there is certainly some truth in the statement that if all the year was one long holiday we would soon become bored, but when they seldom come then we do look forward to them.

Holidays provide an opportunity to have a rest from our normal life and also a change: perhaps a vacation by the sea – even a day trip or two – or we may have the opportunity to visit some mountainous scenery or lakes; I once had a holiday staying for a week in London as a child, which was very interesting and exciting at that age, travelling on the Underground to see different famous places.

Not having the pressure of work or other commitments gives us an opportunity to be able to stop and admire the beauty of God's creation whether it is locally or visiting places further afield. The psalmist tells us in Psalm 19 that *"The heavens declare the glory of God"* – have you ever stopped to look at the marvels of cloud formations or beautiful sunsets or the moon and stars? All these things are speaking to us.

I enjoy spending time by the sea – being able to look to the horizon or watching the waves roll onto the beach; again, a wonder

of God's natural laws that they can only come so far and no further – but the sea also speaks of restlessness. We live in a restless world and our hearts are restless: as the Church Father, Augustine, said: *"Our hearts are restless until they find their rest in Thee"*. Augustine resolved his own restlessness when, after a great struggle with the things wrong in his own heart, he found rest in trusting in the Lord Jesus Christ.

I hope that readers will have some time to enjoy God's creation over the summer and have a time of rest, but also can I commend to you that, like Augustine, you take up and read God's revelation of Himself in the Bible. Let me close with some words that Jesus said in Matthew 11 verses 28–9: *"Come to me, all you who are weary and burdened, and I will give you rest. Take my yoke upon you and learn from me, for I am gentle and humble in heart, and you will find rest for your souls. For my yoke is easy and my burden is light"*.

John Hobson
Visiting preacher at Whitbourne Chapel

Seen on Church notice board at Weymouth;

1. Cross
2. Hands
3. Nails
4. Given

Gill Redman
01985 215062 or
email paradiselost@btinternet.com

Regular times

Services every Sunday morning at 11.00 for about an hour (coffee served at 10.45)

Chapel Prayer meeting every Sunday morning from 10.20 - 10.40

Communion on the first Sunday of each month at 12 noon for 15 minutes

Bible study sessions as announced



COMPUTER PROBLEMS?

01373 812804

Email
Advice for new users
Anti-virus defence
Web sites
Custom programming

Networks - home & office
Home tuition
Web access
Privacy & security
Repairs

www.technojeeves.com

info@technojeeves.com

No Job Too Small



Local Electrician

Part "P" registered NAPIT approved
Domestic and Commercial Work Undertaken
Third Party Testing

Call for a Free no obligation Quotation

Tel: 01749 850769

Mobile: 07779 429786

email:

ian@fushi-electrical.co.uk

www.fushi-electrical.co.uk



E G MARTIN LTD Heating Oil Distributors

Telephone 01373 822784

Victory Road, West Wiltshire Trading Estate
Westbury, Wiltshire, BA13 4JL

WESTERN SKIP HIRE

Telephone 01373 865247

Victory Road, West Wiltshire Trading Estate
Westbury, Wiltshire, BA13 4JL



Windows, Doors & Conservatories

- Free quotes from our local experts
- Strengthen your home's security
- Reduce your heating bills
- Excellent offers

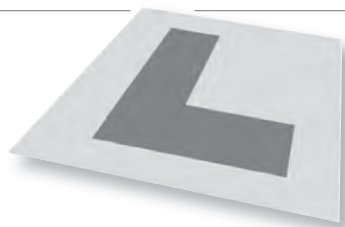


01985 215566
www.newwindowsltd.co.uk

**New
Windows**



Tales from the passenger seat



I met a couple of ex-pupils recently which reminded me of some 'interesting' comments and observations I had received.

I was teaching a pupil the reverse left, and telling them that this particular manoeuvre often requires more practice than the others, since corners vary in shape; it's more skill-based than method-based.

Pupil: 'Oh, I didn't know corners were different shapes, I thought they were all the same'.

Me: 'If you are approaching a fairly narrow situation, even if there is room for an oncoming car, you still have to be careful on approach because there could be a bus or a wide van coming towards you'.

Pupil: 'So if it's anything else other than a bus or van, I don't need to slow down or maybe stop?'.

Ring-ring. 'Hello'

Pupil: 'Hi Steve, is it OK if I bring my baby with me on my lesson tomorrow? She's got scarlet fever which is highly contagious and we're not allowed out of the house or to get close to anyone and I can't get a babysitter'.

Ring-ring. 'Hello'

Parent: 'I want my son to learn to drive. I only took six lessons when I learned 25 years ago, so I want him to learn everything in six lessons please'.

'Is it slightly illegal, fairly illegal, really illegal or definitely illegal if I take my parents' car out on my own while they are away on

holiday without them knowing?'

At the beginning of a pupil's test, the examiner asks the pupil two general maintenance questions. There are about twenty such questions from which the examiner will randomly select two. I provide my pupils with a list of the questions and answers and explain that, apart from needing to know the answers, the knowledge is genuinely useful anyway. When drawing near to the test I go over them, specifically showing them how to physically operate the controls that require a 'show me' response as opposed to a verbal answer. I gave, as always, a copy to this pupil. It got lost. I gave another copy. It also got lost. I emailed a copy so that it could never get physically lost. One lesson, when coming fairly close to the test, we pulled over for me to run over the 'show me' elements of the questions so the pupil would know what to say, but would now learn how to actually lift the bonnet, work the fog lights or whatever... When I invited the pupil to say the appropriate answer, I got a blank response. When pushed, I got the reply, 'Oh, I never bothered to look at them. I know you said I had to read and learn them, but... I didn't know I had to. I just thought you were giving me them...'

It was tricky, but necessary, as you can imagine, to keep my response appropriately helpful.

Ah well, c'est la vie...

Steve Dayman-Johns

TOENAIL CUTTING REFLEXOLOGY

IN YOUR OWN HOME

ALICE LEWIS

Telephone 01373 229335

NEED HELP WITH YOUR GARDEN?

Hedge cutting • Lawn mowing
Strimming • General gardening

Call Rob Clements

Tel 01373 832683 Mob 07586 337118

Wren House

Residence for the retired and elderly

Wren House in Warminster is a long-established, elegant retirement home, specialising in individual care in gracious surroundings. Having just thirteen rooms, each with a private bathroom, we are able to offer the ambience of a family home, together with caring staff and the facilities to enable our residents to enjoy their later years with dignity.

Wren House serves fresh, locally-sourced, home-cooked food. Residents enjoy a varied activity programme which includes a gardening club and our own choir.

Mrs Ellie Simmonds

Wren House Ltd, 32 Vicarage Street, Warminster, BA12 8JF

Telephone 01985 212578

wrenhousewarminster@hotmail.com

www.wrenhousewarminster.co.uk

ST DAVIDS WHITSAND BAY CORNWALL



Holiday Let
Sleeps up to 8
01373 464870

www.stdavidswhitsand.co.uk



Karina

Mobile Hairdresser

Tel. 01373 832823

Mob. 07742 690337

Paul Ledbury

Quality Painting and Decorating

30 years experience

INTERIOR AND EXTERIOR
GENERAL MAINTENANCE

5 Hampshire Gardens

Westbury, Wiltshire

BA13 3EX

Telephone 01373 858163

Mobile 07976 242045

CLARION

electrical

Part P registered & guaranteed



Making household electrical circuits work safely

clarionelectrical@btinternet.com

01985 216641 07766 355237

*Fifteen
years in
the trade*

RICHARD ROBBINS

City and Guilds Trained Gardener

All aspects of Garden work undertaken

07510 130083

Black Dog Farm Bed & Breakfast



You will find a friendly welcome and a hearty breakfast in our listed Georgian Farmhouse. The quality en-suite bedrooms contain everything you need to ensure a comfortable stay.

Lyn and Fraser Mills

01373 832858 or 07878 954563

Black Dog Farm, Chapmanslade,
Wiltshire, BA13 4AE

www.blackdogfarm.co.uk

Allsorts of Fencing

Peter Allsop

allsortsoffencing.co.uk

All types of domestic and agricultural
fencing supplied and erected

Also:

- Decking and patios
- Sheds, pergolas and archways
- Topping of fields and paddocks

Allsorts-of-fencing@hotmail.co.uk

01373 832339

07710 180551

anatomy clinic

*chiropody, holistics,
massage, beauty*

28 East Street
Warminster
BA12 9BN



t. 01985 219122

e. info@anatomyclinic.co.uk

w. anatomyclinic.co.uk



Like us on Facebook



KB Landscape

30 years in landscaping

Phone

01373 832371

Mobile

07951 297173

Kevin Brixey - for quality and experience

5 Red Cottages Corsley Warminster Wiltshire BA12 7PS

Landscaping
Patios and paths
Turfing and seeding
Brick and stone walling
Decking and pergolas
Block paving
Gravel drives
Pond work
Fencing

A view from over the hedge...

Countryside Matters

Mixed weather forms the theme for Judith Helliar's report on the goings-on in the countryside in June

June brought us more rain than December 2016, gardens have suffered with exceptionally high winds following a late frost in May and I now sit outside at 8pm on the 17th of June recovering from temperatures of over 30° today: it's quite understandable why the English talk about the weather so much!

As you know, the weather plays an important part in country life. The cows are now enjoying grazing again after a shortage of grass in May, some of them are already going on maternity leave as they enjoy a few months' rest from their regular twice-a-day milking before they have their next calf.

Although they are away from the farm buildings, they still need to be checked at least once a day to make sure that they have sufficient food and water and that they have no ailments. Unfortunately, accidents do happen, gates are accidentally left open and cattle will wander quite a way in a short time. If frightened by unusual noises such as fireworks, air balloons, aircraft and drones, the consequences are unimaginable!

We have no good news regarding our owl boxes, except to say that one is occupied by a family of grey squirrels and the other has jackdaws enjoying the shelter!

If you do see owls out in the daylight hours they are out searching for food for their young, it is just awe inspiring to see

them circling high above their prey and then silently swoop down to pick up an unsuspecting vole or mole.

The young swallows are now out testing their wings having survived the rain and the wind. Some adults are hatching second broods in their nests in the shelter of the old stone barns. Ground nesting and tree and hedge nesting birds have had our poor weather to contend with and unfortunately have not had such a good breeding season.

The arable crops are looking good – some of the winter-sown cereals will ripen quickly in this sunshine, the maize is now 18 inches high and hay-making and silage-making is going full speed ahead, making the most of the sunshine, longer daylight hours and less dew in the early morning.

Agricultural shows allow some farmers the opportunity to display their prime stock giving them a chance to promote their breeding stock if they wish to sell. Machinery and other equipment is also on view, but it is also an opportunity for the general public to see farm and rare animal breeds close up and to enjoy a great day out. Many of these shows will have career stands where young and not so young can get advice on how to get on to the agricultural, horticultural and forestry career ladder. Look out for open days at local and national agricultural schools and colleges

Judith Helliar

Corsley Reading Room

Your 'village hall'

Chairman, Hugh Deed, reports on the latest happenings at the hall

By the time you get this edition of The Bridge the modifications to the exit to the bar area from the main hall should have been made. As explained last month, the changes will enable us to easily wheel items from the main hall into the storage cupboard and move the steps into the bar area making the exit safer, especially in an emergency. We are also modifying the storage cupboard to make the space more usable. This work should be completed by early July.

Following the successful deep-cleaning of the foyer areas at the front and rear we have now had the toilets and the kitchen deep-cleaned. We hope all users will agree this has made a significant difference to the appearance.

The committee has accepted a quote to undertake work to the wall on the A362 to repair the pointing and stop the damp coming into the building.

So that our the guy who cuts our grass doesn't get spattered in dog mess and also prevent people walking said mess into the

building, we have put up further dog fouling signs reminding people that, as well as spreading disease and being antisocial, it is an offence to not clean up after dogs.

While we do employ a cleaner on a regular basis, the day to day maintenance and replenishment falls to the volunteer committee, so your cooperation in advising us of any problem/shortage is appreciated.

The committee is always interested to hear ideas about uses for the hall and welcomes enquiries.

If you would be interested in joining the committee please let me or Jenny Rutty know, or talk to any member.

Full details about the hall and its facilities, including how to hire it, are on the website, or call Gill Parkinson to discuss. See website www.corsleyreadingroom.org.uk

Hugh Deed

Chairman of Management Committee
chairman@corsleyreadingroom.org.uk or
01373 832897

Events run by the Corsley Reading Room Management Committee

Coffee Morning:

First Tuesday of the month 10 am - 12 noon

IT Classes/Club:

Autumn dates to be announced

Corsley Cinema

Autumn dates to be announced

Regular events run by other organisations

Lite Bites Lunches: *third Wednesday of the month at 12.30 pm*

Yoga: *Tuesday and Wednesday evenings*

Pilates: *Tuesday afternoons*

Committee members include: Vanessa Hyde, Jackie Jasper, Sue Kerfoot, Gill Parkinson, Jenny Rutty, Jill Westgate, David Carruthers.

Small ads

£1 for EACH item for sale or wanted (cash only please) - at one of the two drop-off locations)

Please note: no cash, no advert!

FOR SALE

Ellie-Bo Deluxe extra strong, extra large two-door, silver, folding **dog crate** – 42" long x 28" wide x 31" high, with a divider included so can be used for a puppy and increase the size with puppy's growth – **£30**.

01373 832444

FOR SALE

MacGregor Golf Clubs – full set 4-9 in bag (2 x 6's of different lengths) + pitch and sandwedge – **£30**. **01373 832444**

For up-to-date information such as occasional parish council meetings, church services, previous editions of The Bridge, local clubs and activities, business listings, and other useful information, please visit **www.corsleyandthebridge.co.uk**
Want something added? Just email the Editor with your request!

Answers to Bob's Bafflers

- 1 Mercury
- 2 Arizona
- 3 Egypt
- 4 My dame
- 5 Montgolfier
- 6 The London Stadium (former Olympic Stadium)
- 7 The dove
- 8 On Route Sixty Six
- 9 Courage
- 10 Verona
- 11 Otter
- 12 Eddie Fisher (but not all at the same time!)

Local organisation adverts

£2.00 per month for a small boxed advert or £7.50 for a full page. Full page adverts are allocated depending on space available and cannot be guaranteed. All monies must be at one of the two drop-off locations (Barbers Plant Centre or Acres Supply Garden Centre) by **4pm** on the **19th** of the month. Please note: no cash, no advert!

Trade advertising

Annual trade advertisements (12 issues, when space is available)

1 space	(69mm wide x 33mm high)	£22.00
2 spaces	(69mm wide x 66mm high)	£42.00
3 spaces	(quarter page - 69mm wide x 100mm high)	£60.00
4 spaces	(138mm wide x 66mm high)	£75.00
6 spaces	(half page - 138mm wide x 100mm high)	£104.00

Trade advertisement material should be supplied in print-ready format, to the chosen standard size and correct shape.

For trade advertising enquiries, please contact David James (Trade advert coordinator/Treasurer) at either thebridge832@gmail.com or 01373 832443.

Darling Interiors

Made to measure Curtains & Blinds • Bedspreads • Tracks & Poles • Fitting • Competitive Pricing

Chosen in the comfort of your own home

Choosing new furnishings has never been simpler. We have an extensive range of exquisite fabrics from leading designers and suppliers to choose from. For the finishing touch, we can provide beautifully crafted tracks and poles from the Bradley range and other leading brands measured to fit different sizes of bay windows and straight windows.

Call today to book your FREE No Obligation Consultation



t: 01373 672 359 e: info@darling-interiors.co.uk w: www.darling-interiors.co.uk

cloud
homecare

Quality care and
support in Warminster
and the surrounding
villages



We are a small, Corsley based care provider

**We provide care to people who need support
to remain living in their own home**

**Please telephone or email us, or visit our
website for further details**

Tel. 01373 832 597 enquiries@cloudhomecare.co.uk
www.cloudhomecare.co.uk

Chill out in your garden this summer...



Cool plants
Pots galore!
Vintage, quirky furniture
Hanging baskets
Statuary
Water features
and so much more...

01373 832591
www.acressupply.com
info@acressupply.com

*Your local, independent
garden and aquatic centre
Open 7 days a week*

Acres Supply
Corsley
BA12 7PP

FG COLLIER

KITCHENS • BATHROOMS • INTERIORS

WHOLE HOUSE DESIGN & SOLUTIONS



FG COLLIER LTD 29-35 EDWARD STREET WESTBURY WILTSHIRE BA13 3BL
TEL 01373 822227 EMAIL [INFO@FGCOLLIER.COM](mailto:info@fgcollier.com) WEB FGCOLLIER.COM