

The Bridge

January 2018

monthly magazine for the villages
of Corsley and Chapmanslade

Happy New Year!
to all our readers and contributors

2018

Get singing with the Festival Choir, catch a film at Cinema Corsley, get your bids in for donations or grants, join in the Church strategy debate, go to a pub quiz, enjoy a 'Lite Bite' lunch, there's lots to do in January...



Mendip Mowers

Why Honda?

*There is a simple reason why you will see
so many Honda products still hard at work
after many years of service;
they are built to last.*

OFFERS AVAILABLE THROUGHOUT THE YEAR

- Mowers • Tillers • Brush cutters
- Blowers • Chainsaws
- Hedge trimmers

Barn Dried Logs Also Available



GARDEN MACHINERY SPECIALIST

SALES • SERVICE • PARTS

www.mendipmowers.co.uk 01373 832965

Unit 7, Green Farm Industrial Estate, Chapmanslade BA13 4JJ



Frome Heating Specialists

J L and M W Knight

**Heating and plumbing engineers
specialising in:**

Oil and gas boiler servicing

Boiler replacement

Energy management

Pressurised hot water systems

Underfloor heating systems

Frome family business established 1964

Stavanger, Corsley, Nr Warminster, Wiltshire, BA12 7QL

Call 01373 832578



199876

The Bridge

monthly magazine for the villages of Corsley and Chapmanslade

Articles

Please submit articles either by email to viv.thomas146@btinternet.com or by hand (legible handwriting please!) and take them to the drop-off locations at Barbers Plant Centre, Chapmanslade, or Acres Supply Garden Centre, Corsley by the deadline.

News, reports, updates, thank you's, etc, from individuals or local organisations are free – the more the merrier – keep 'em coming!

File types

Save your files as .doc – please don't send .docx files – I can't always open them successfully.

Advertising

Small ads are £1 for each item whether 'For Sale' or 'Wanted'.

Events/local organisation ads (churches, clubs, playgroups, etc) are £2 per month for a boxed advert.

Full page ads cost £7.50, are subject to space availability and cannot be guaranteed,

If you are advertising, don't forget to take the fee – cash or cheque in a sealed envelope please, to either of the drop-off points (Barbers Plant Centre or Acres Supply).

Please note: no cash, no advert!

Trade advertising

Please see information on the last page.

In this issue...

8 Bob's Bafflers
a cunning quiz

13 Science
biology: changing the world

16 Parish Council briefing
Corsley

Seven Open Doors **21**
news from the pews

Corsley WI **26**
news from the ladies

Cinema Corsley **33**
utterings from the usherette

37 Whitbourne Chapel
chapel colloquy

39 Your village hall
ramblings from the Reading Room

42 Countryside matters
views from over the hedge

Deadline

**Deadline for articles
or adverts for the next
issue of The Bridge is
4pm 19th January**

**Please note that no
items will be accepted
after this date**

Diary Dates

January

Tuesday 2nd

Village Coffee Morning - 10 am - 12 noon, Corsley Reading Room

Thursday 4th

Chapmanslade Parish Council – 7.30 pm, Chapmanslade Village Hall

Monday 8th

Corsley Festival Choir – rehearsals resume! 7.30 pm, St Margaret's Church

Thursday 11th

Corsley WI – 2.30pm, Corsley Reading Room - 'A Bite Of Delight', celebration cakes by Mel Colbridge

Wednesday 17th

Corsley and Chapmanslade Churches PCC Meeting – 7.30 pm, St Margaret's church

Thursday 18th

Church and Community Coffee Morning – 10 am – 12 noon, Three Horseshoes Chapmanslade

Cinema Corsley - 'My Cousin Rachel' – 7 for 7.30 pm start, Corsley Reading Room

Wednesday 24th

Lite Bites lunch – 12.30 pm, Corsley Reading Room

Saturday 27th

Corsley and Chapmanslade Churches Church Strategy Meeting – 10 am to 12 noon, Corsley Reading Room

Sunday 28th

Pub Quiz – 6 pm, Cross Keys, Corsley

Wednesday 31st

Deadline for submissions of bids for Corsley Show Charitable Trust donations (see next page)

Deadline for submissions of bids for Len White Trust Fund donations (see page 4)

Deadline for submissions of bids for Corsley Parish Council donations/grants (see page 43)

February

Monday 5th

Corsley Festival Choir - Open Evening – 7.30 to 9.30 pm, St Margaret's Church

Thursday 8th

Corsley WI – 2.30pm, Corsley Reading Room - 'Tai Chi for All Ages' with Anne Tottingham

Chapmanslade Parish Council – 7.30 pm, Chapmanslade Village Hall

Corsley Show Charitable Trust Applications

Following the Society AGM, the Corsley Show Charitable Trust now invites applications from organisations benefitting the parishes of Corsley, Chapmanslade and Horningsham.

Applications must be made by **Wednesday 31st January** for decision during February 2018.

The application form, along with more detail, is available on website
hdwebsites.wixsite.com/cstrust

There may be an opportunity to apply for grants again later in the year, depending on the applications received and the decisions of the trustees.

Emergency Contact List

Non-emergency (Police)	www.wiltshire.police.uk	101
NHS	www.nhs.uk	121
Environment Agency	www.environment-agency.gov.uk	
General enquiries		03708 506 506
Floodline		0345 988 1188
Incident reporting		0800 80 70 60
Met Office	www.metoffice.gov.uk	0370 900 0100
Wiltshire Council	www.wiltshire.gov.uk	0300 456 0100
Salisbury District Hospital	www.salisbury.nhs.uk	01722 336262
Royal United hospital Bath	www.ruh.nhs.uk	01225 428331
Highways England	www.highways.gov.uk	0300 123 5000
Samaritans	www.samaritans.org.uk	116 123
Victim Support	www.victimsupport.org.uk	0808 16 89 111
Citizens Advice Bureau	www.citizensadvice.org.uk	03454 04 05 06
British Red Cross	www.redcross.org.uk	0344 871111
St John Ambulance	www.sja.org.uk	08700 104950
RSPCA	www.rspca.org.uk	0800 1234 999 or 01179 717 846
BT OpenReach	www.openreach.co.uk	0800 800151
Network Rail	www.networkrail.co.uk	08457 114141
Wessex Water	www.wessexwater.co.uk	0845 600 44600 or 0871 909 0182

Corsley Festival Choir

Come and join us

Corsley Festival Choir re-starts on Monday 8th January and we will warmly welcome singers – new voices and those who have sung with us before.

We are rehearsing for our concert in May when we will sing Handel's Messiah Parts II and III. This is a wonderful opportunity to take part in the performance of a much-loved choral work.

We meet at St Margaret's Church in Corsley every Monday. You could come along to check us out when rehearsals re-start on Monday 8th January at 7.15pm and join us for a glass of wine before we get down to the happy business of making music. From then on our Monday evening rehearsals start at 7.45pm.

We are also holding an **Open Evening** on **Monday 5th February** from 7.30 - 9.30pm when you can visit, sing along and maybe join us on future Monday evenings in preparation for our concert at St Margaret's Church on Sunday 13th May.

For more information about the choir, please contact me on **01373 832418**.

*Membership Coordinator
Jenny Ratty*

Len White Trust Fund

Bids for Donations 2017/18

The Len White Trust Fund was set up in 1992 in memory of Len White. Its basis was a donation from Len's estate and contributions from the village, with the intention of using interest from the funds to help pupils of Corsley School. Its secondary purpose, in the event of the School's closure, is to disburse the income of the Fund **'for the benefit of the children living in Corsley between the ages of five and eleven for educational purposes as the full Parish Council shall think fit'**.

The Trustees of the Len White Fund (Corsley Parish Council), invite bids for the financial year 2018. Information and details required for any bids can be obtained from John Willcox, Parish Clerk (01371 832171).

Bids should be submitted to John Willcox by 31st January 2018, on paper to: Little Orchard, Lyes Green, Corsley, or by email to corsleypc_jdw@aol.co.uk

For up-to-date information such as occasional parish council meetings, church services, previous editions of The Bridge, local clubs and activities, business listings, and other useful information, please visit **www.corsleyandthebridge.co.uk**
Want something added? Just email the Editor with your request!



Pears Electricians

Nigel Charteris - BSc (Hons) M.I.E.T.



Professional Local Electrician

A HIGH STANDARD OF WORK AT REASONABLE RATES

Part P registered with www.napit.org.uk - Testimonials and references available

Faults & Troubleshooting • Repairs & Improvements
Installation Condition Reports • Boiler Wiring

www.pearselectrical.co.uk

01985 213314 or 07717 534026

*Getting married?
Special occasion?*

*Classic 1960 Hillman Minx Estate car for hire
Chauffeur ~ bows ~ flowers ~ champagne*

*Reasonable rates
Please contact Amanda on
01373 827795 or 07720 673698*



OAKLEY

GARDEN MACHINERY

**Grove Lane, Marston Trading Estate
Frome, BA11 4AT**

**For Sales, Spares,
Workshop Service
and Repairs**

Hayter
Mountfield
Lawn King
Westwood
Stihl
Honda
Toro
Echo
Husqvarna
Shindalwa
Oregon
and more...



www.oakleyfrome.co.uk

01373 467712

Bride by Design

Bridal gowns and accessories

2 Silver Street
Warminster, BA12 8PS



Please contact us to
arrange an appointment
t. 01985 217216

e. info@BridebyDesign.biz
www.bridebydesign.biz

**STUNNING COASTAL VIEWS ON
CORNISH COAST NEAR LOOE**



Six bedrooms (sleeps 12)
Private access onto beach
Pets allowed

Top class facilities including wi-fi
Rent for week or even long weekend
Downstairs bedroom and shower room

For more info: Sandy Parrish 01373 832522

The **co-operative** funeralcare

- 24 hour service
- Free bereavement advice
- Pre-paid funeral plans

WESTBURY 48 Warminster Road, BA13 3PF
01373 858142

WARMINSTER 3 George Street, BA12 8QA
01985 220105

FROME 1 Nunney Rd, Frome BA11 4LA
01373 473426



southern coop

ORCHARD UPHOLSTERY

RE-UPHOLSTERY OF
ANTIQUE AND MODERN
FURNITURE

❖ FREE ESTIMATES ❖

COLLECTION AND
DELIVERY SERVICE

Telephone Lesley
01373 464870

Sharon's Foot Clinic

SAC Dip FHPT SAC Dip FHPP



Fully insured and highly trained

For the professional treatment of:
Corns · Callus · Cracked Heels
Athletes Foot · Fungal Infections
Thickened Nails · In-growing Nails
Diabetic Foot Care · Verrucas
Nail Cutting · Nail Reconstruction

Contact Sharon on
01373 836734 or 07728 200402

Clinic appointments at
12 Sunny Hill, Nunney, BA11 4ND

Home visits also available



Clean-it

Recommended by



Carpet and upholstery cleaning specialist

01373 462059 07779 247961 www.clean-it.biz

Home ~ Private ~ Lettings

15%
Minimum
Savings

Garston
Veterinary Group



Spread the cost of your
pet's preventative
healthcare into affordable
monthly payments

Our Wellness Plan has been specifically designed so that your pet receives all of the essential vaccinations and parasite treatments and also a whole range of additional benefits to help ensure that they remain in the best possible health.

Cats £10.30
per month

Dogs from £12.50
per month *

*please contact one of the surgeries for specific prices for your dog. Prices are based on adult weight.

wellness@garstonvets.co.uk

Frome Melksham Trowbridge Warminster Westbury
01373 452225 01225 617779 01225 754021 01985 213350 01373 301448



www.garstonvets.co.uk



Domestic Appliance Sales and Repair Service

Domesticare

21 Keyford, Frome

www.domesticarefrome.co.uk



01373 467351

Childminder

Ofsted registered

Full and part time. Before and after school
Holiday spaces available

Pick-up and drop-off offered

Call **01373 832854** or **07883 025476**
d.m.rawlings@outlook.com

JERRY RAYNER ●
boiler maintenance ●

01985 841461 or 07775 755981

FOR SERVICING AND BREAKDOWN
OF OIL BOILERS
also AGA and RAYBURN

- Competitive rates
- Friendly, helpful and efficient
- Call now for a quote

Pippa's Pet Care

Dog Walking · Cat Sitting
Small Animal Care

07745 482187 01373 839074

Pippaflack@icloud.com

Facebook/Pippa's Pet Care

DRIVE IN AND PICK YOUR OWN FIREFWOOD LOGS

**Woodchip, Mulch,
Hardwood Logs,
Softwood Logs,
Kindling, House
Coal.**

Delivery available.



Mon to Thurs: 7.30am - 4.15pm Fridays: 7.30am - 3.15pm
Closed on Sundays & Bank Holidays

Open Saturdays **from Sep-Mar: 8.00 am to 12.00 pm**
☎ **01985 213507** 🌐 www.longleatforestry.co.uk



**LONGLEAT
FORESTRY**

Bob's bafflers

- 1 Where would you find a signalling system called 'tick tack'?
- 2 Which American State has Augusta as its State Capital and is known as the Pine Tree State?
- 3 According to the Everly Brothers, what time was little Susie due home?
- 4 Who had a horse named Marengo?
- 5 What are the Queen's two middle names?
- 6 By what name is solid carbon dioxide known?
- 7 Which of the Bronte Sisters wrote 'Wuthering Heights'?
- 8 Which is the largest island in the Caribbean?
- 9 How many playing pieces make up a set of dominoes?
- 10 Which three animals are mentioned in the nursery rhyme 'Hey diddle diddle'?
- 11 Which actor starred in the 'Death Wish' series of films?
- 12 Which canal name when spelt backwards is the name of a Greek God?

Answers on page 44

Elizabethan Evening

The Illyria Outdoor Theatre Company are putting on **'The Hound of the Baskervilles'**, at Manor Farm, Corsley on the **Saturday 4th August 2018** please keep this date free and come and enjoy this well-known play by Sir Arthur Conan Doyle featuring Sherlock Holmes and Dr Watson. More details in the New Year...

John Helliard
Chairman

Join the Chapmanslade Players as we take

Old Mother Hubbard

on an adventure to the Wild West in search of her long-lost brother. Lou Knight in her debut role as Director is joined by regulars such as Stevie McStevie, Dani Fuke and we welcome some new talents young and old.

Performances at **7.30pm Friday 9th and Saturday 10th February** with a **matinee** also on **Saturday 10th at 2pm**, at Chapmanslade Village Hall.

Tickets £3 and £5 available from Barbers Plant Centre, Chapmanslade and Lou Knight (please see our poster on page 27 for further details).

UPVC REPAIRS WILTSHIRE.CO.UK

FOR PROFESSIONAL WINDOW & DOOR REPAIRS

Are you having a problem with your UPVC windows or doors?

- ✓ Misted glass
- ✓ Broken or faulty window hinges
- ✓ Faulty locks
- ✓ Jammed windows or doors
- ✓ UPVC door adjustments
- ✓ Window and door handles

Call us – we are here to help

All work guaranteed

01373 430010 07795 143228 www.upvcrepairswiltshire.co.uk

the three horseshoes

Open daily from 10AM-11PM
serving delicious home cooked food
(12-3, 6-10 Mon-Sat. & all day Sun.)

Enjoy a refreshing drink in our beer garden
with spectacular views of Longleat and Cley Hill,
or indulge with one of our regular meal deals
by the warm open fire on a bitter winter's day.

We organise monthly events,
featuring live music, comedy + much more!

follow us on Facebook for more details



threehorseshoeschapmanslade



BED & BREAKFAST, THE PADDOCK £65 A NIGHT

Situated in Corsley Village, quiet and secluded location.

The accommodation is self-contained and has its own entrance.

Shower room on the ground floor and lovely double bedroom
on the first floor. Breakfast is continental and served at a
table in your room.

Please call Jill & Malcolm Westgate on 01373 832125

To see more details visit

<http://jillianbrunning.wixsite.com/thepaddockcorsley>

YOGA CLASSES

Corsley Reading Room

Tuesdays 7-8.30 pm

Wednesdays 5.30-7 pm

(other classes also available)

Jackie Jasper

01373 832301 yogawithjackiej@gmail.com



**Shake off those pounds and
dance yourself fit.**

Chapmanslade Village Hall

Monday 7.30pm - 8.30pm

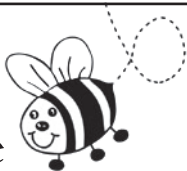
Longbridge Deverill Village Hall

Thursday 7pm - 8pm

For all levels of fitness and
NO experience needed.

For more information please contact
Amy 07830 119032

Busy Bees Pre-School Chapmanslade



For children aged 2-5 years

Weekdays (term time only) from 8 am-5 pm

Please contact Kelly Williams to arrange a
visit and a free trial session for your child

Breakfast club and after-school club available
(term time only)

Telephone 07749 257608
busybeespre-school@hotmail.co.uk

Jackdaw Plastering



Phone : 07504977650

Email : andy@jackdawplastering.com

Web : www.jackdawplastering.com

***Qualified *Insured *Clean *Reliable**

For your
Heating Oil Supplies
contact

KINCH FUELS

at their
local depot in
Devizes, Wiltshire

Telephone 01380 727102

*The company you and
your home will warm to*



LUXURY PRIVATE CAR HIRE

A locally based, door-to-door, personal
service for up to six passengers in
air conditioned comfort

AIRPORTS • SEAPORTS • ANYWHERE

For bookings, please call
01985 840088 07903 307734

WEST COUNTRY SWEEP

Domestic & Commercial Chimney Services

Andrew Leigh

07545 822109

westcountrysweep@gmail.com





Downlands TREE SURGERY

For Expert Tree Care

Telephone Jon Burgess on
01985 214320

Skilled pruning
Tree felling
Stump removal
Qualified and insured

**Free tree health
survey and quotes**

Keep active with physiotherapy

Alison Rossiter MCSP HPC

Chartered Physiotherapist

30 years experience in physiotherapy specialising in the treatment of muscle and joint problems. Helping people to improve their health and fitness through treatment, exercise and advice.

Home visits can be arranged.

Daytime and evening appointments available.

If you need help please contact:

Beckington Physiotherapy 01373 831483

Email: arossiterphysio@gmail.com

www.beckingtonphysio.co.uk

DAVID EDMUNDS & CO
ACCOUNTANTS & TAX CONSULTANTS

Specialists in the self-employed, small and medium business and self assessment. Preparation of accounts, VAT, PAYE, income tax and corporation tax returns.

*Personal, friendly service
Evening appointments by arrangement*

Telephone 01225 334447
Home 01373 832430

**TREVOR
& JON** *by Amy*

Unisex Hair Salon

Unit 2 Stone Mill, Trowbridge BA14 8BU

01225 754001

trevorandjonbyamy@outlook.com

Kevin O'Mahony
Quality Painter and Decorator

Internal and external painting
Artexing
Wallpapering
Coving
Hand painted kitchen units

07724 349447 or 01985 301197
email kevo7743@googlemail.com
www.thewarminsterpainter.co.uk

Biology: changing the world

What is gluten and why is gluten-free food important?

Happy New Year! You may have made a New Year's resolution to lose a few pounds after the excesses of the season. Eating less is a sensible thing for many of us to do. However, there are a lot of different diets these days, and avoiding certain foods or certain ingredients seems to be popular, particularly among 'clean eating' advocates. The photograph shows a local shop's 'Free From' food display. So, why is the increase in availability of such foods an important development for your and my nutrition?

One of the main changes is in the availability of gluten-free foods and it

is estimated that about 1/8th of the UK population has gone on a gluten-free diet and many more have bought gluten-free foods. Gluten is found in wheat, rye, barley, spelt and other related grains. It is composed of two proteins, gliadin and glutenin, and is important in breadmaking and other baking as it gives the dough its elasticity. Gluten-free foods usually have a replacement for gluten to bind the components and give some elasticity.

Gluten is the component to which people suffering from coeliac disease have an adverse immune reaction, which damages the lining of the gut. This is a serious illness due to inability to absorb certain nutrients, and may adversely affect normal growth and development in children or cause a series of serious effects, such as anaemia or infertility, in adults. The symptoms of coeliac disease vary, but access to gluten-free food is enormously important for the health of such individuals. It is estimated that up to 1% of the UK population may be suffering from mild or severe coeliac disease

So why do people who do not suffer from coeliac disease go 'gluten free'? For some it is a way of cutting down on bread and pasta and therefore part of weight-control. Others say that they are sensitive to gluten, and have non-coeliac gluten sensitivity (NCGS). This is often self-diagnosed and there is little agreement about the symptoms,



but they often include bloating, diarrhoea or tiredness.

Until recently, there have been few controlled scientific studies for NCGS in which the individuals are challenged with gluten to see if the symptoms reappear. One such study last year suggested that NCGS may not exist and the responses to gluten challenge are within the normal variation expected in human studies. A very recent paper in the journal 'Gastroenterology' described a controlled trial, in which individuals were challenged with gluten or with fructans (small carbohydrates), and which indicated that it is the carbohydrates that may be responsible for the sensations alleviated by a gluten-free diet in non-coeliacs.

While going "gluten-free" is popular, is it risky? Obviously, for coeliac patients and anyone suffering from a wheat allergy, it is vitally important for their wellbeing. Others who suffer after ingesting gluten-containing foods, should first be checked for coeliac disease and wheat allergy; but fructan-sensitivity or other health problems may be responsible. Avoiding gluten-containing foods completely if you are not gluten-intolerant can be problematic if it means you eat a restricted narrow diet. You may not get sufficient essential nutrients, such as iron and folic acid, which are found in a broad and varied diet.

The simplest message is to beware of popular food fads and unqualified nutritional advisors. Instead, eat a broad and varied diet and have any health problems checked by the professionals.

Nigel Brown is not medically-qualified and writes this from a scientific perspective. He is happy to receive comments, questions and suggestions for future articles at nigelbrown48@gmail.com

Corsley Parish Council

Annual Parish Meeting

6.30pm, 5th March

(date to be confirmed)

Corsley Reading Rooms

This is YOUR meeting!

It is the annual occasion when you have a chance to discuss the issues which you believe most affect the Village.

The Parish Council is seeking suggestions for potential inputs to the agenda from the village, including input from outside bodies or individuals from whom you may wish to hear. We will be inviting our Wiltshire County Councillor, Fleur de Rhe Philipe.

Please pass any requests or ideas to your Parish Clerk, John Willcox by

31st January to

corsleypc_jdw@aol.co.uk, 01373 832171

All Parish Councils in England are required by law to hold an Annual Parish Meeting each year. The meeting allows the Council and local community organisations to explain what they have been doing over the last year and electors can have their say on anything which they consider is important to the people of the parish. Note that this is not a Parish Council meeting although it is chaired by the PC.

ALLSOP CARPETS & FLOORING

DOMESTIC ♦ COMMERCIAL ♦ INDUSTRIAL

Christchurch Street West, Frome BA11 1EB

TEL: 01373 463866 MOBILE: 07887 953014

www.allsopcarpets.co.uk

Chapmanslade Village Hall

Can be hired for all your functions:
parties, weddings, meetings, classes, etc

For hiring information, phone
Ken Davies 01373 832034 or email
kennethdavies1949@gmail.com

Traditional Mole Catcher

07512 681111

01373 836350



KEYVOLUTION

Locksmith and
Carpentry Services
serving the Wiltshire Area

Warminster based company offering locksmith and carpentry.
Police cleared, reliable and honest service.
Any other quote beaten.

- BS3621 lock upgrades for house insurance approval
- Garage doors, locks and running gear
- Lock repairs – specialising in Chubb mortice locks
- Upvc double-glazed door and window locks fitted – even old ones!
- Door or window locks opened destructively or non-destructively (indemnity required for these services)
- Digital code locks supplied and fitted
- All types of carpentry work – mostly 2nd fix and maintenance

Check out my website

www.keyvolution.co.uk



or call Ben on 07748 214799 or 01985 219799

Hypnotherapy for you!

Solution Focused Hypnotherapy is a safe, practical therapy and can help you to:

- Feel better about yourself
- Achieve work, play, lifestyle balance
- Improve many areas of your life

Fiona 07801 436633

fiona@balancehypnotherapy.co.uk

www.balancehypnotherapy.co.uk



White Horse Windows

Windows, Doors, Conservatories and
more...

Local Company, Exceptional Standards
10 year guarantee

Windows Fascia & Guttering
Doors Conservatories

CERTASS Registered

For a Free Quotation call Ryan on
07909 441442 or 01373 302594



nickcranston@acertreesurgeons.co.uk

www.acertreesurgeons.co.uk

01373 832026 or 07590 986261

85 High Street, Chapmanslade

- FREE advice and quotes from a friendly, professional and accredited company fully insured and Council approved
- We are highly skilled and qualified to undertake all tree work from fruit tree pruning to technical dismantling of huge tree structures near buildings as well as hedge trimming and care.
- We also sell logs!

BARTERS PLANT CENTRE

'Passionate about Plants'

Shrubs ♦ Perennials ♦ Trees ♦ Roses ♦ Conifers
Climbers ♦ Fruit Trees ♦ Hedging ♦ Soft Fruit ♦ Seeds
Bulbs ♦ Basket Plants ♦ Bedding ♦ Vegetable Plants
Christmas Trees ♦ Holly Wreaths
National Garden Gift Tokens



Opening Hours

Mon to Sat 9 - 5 (March to October)
Mon to Sat 9 - 4.30 (November to February)
Sun 10 - 4 (March to June + December)

Just off A36 in Chapmanslade, Wilts, BA13 4AL
01373 832694 www.barters.co.uk



JONATHAN CORP

Painter and Decorator
General House Maintenance
Sturford Mead Farm, Corsley
Warminster, Wiltshire, BA12 7QU
01373 832213

Postlebury News

R Gould – Newsagent

All papers and magazines
Home delivery service

01749 850556 07979 452677

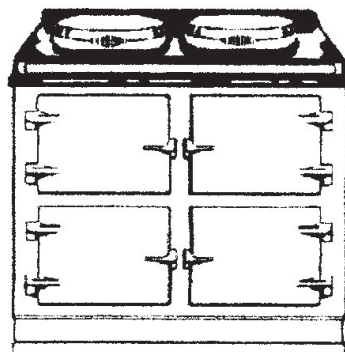


T A P Services

Telephone 01373 463106

tapservices@btinternet.com

Authorised Stanley Service Agent
Oil Range Cooker & Oil Boiler Servicing



Range Cooker Servicing

Corsley Parish Council

Parish Council Briefing

Chairman, Neil Britten, rounds up a busy Quarterly Meeting

Each year, December brings one of the key quarterly meetings in the Parish Council calendar; the main topic being Parish finances, with consideration of the in-year spending, the forecast for the three years ahead and a decision on the level of the precept application for the forthcoming year. In addition, this meeting considers topics for the Annual Parish Meeting as well as more routine matters. One planning application was on this December's agenda.

After the PC meeting Councillors met in their capacity as Trustees of the **Len White Fund** and there is a notice elsewhere in this edition of *The Bridge* seeking bids for grants from this fund.

Planning application

17/11001/FUL - Harromint House, 51 Whitbourne Moor, Corsley. Single storey extension. (Re-submission of 17/03495/FUL)

The original application was supported by neighbours and the PC registered no objection. However, it was refused by Wiltshire on the grounds that it "...would result in an incongruous dominant addition...." with "...an adverse impact on the character and appearance of the host property.." The new application addresses issues raised by Wiltshire and is again supported by neighbours. The new application is not supported by Planning Officer, but does have the support of our County

Councillor who has agreed to call in to Committee. The PC, once again, registered no objection to this application.

Streetscene

Community Area Transport Group (CATG) supported projects:

- **Whitbourne Springs One Way System**
The topographical survey has been completed and in due course the Chief Traffic Officer will produce plans for consideration. These will require further CATG funding and a 25% Parish contribution. The plans and costs will be agreed by the PC before implementation.
- **Long Hedge Driver Disorientation**
Signing and road markings have been approved and funded. Implementation awaited.
- **Fuzzy Hill A362 Junction Signing**
The "no entry to Longleat" signing has been approved and funded. Implementation awaited.

Corsley Heath Road Safety

Metro Test

A362 speed check at Corsley Heath. With a view to gathering evidence to support a case for or a formal Speedwatch, a "Metro Test" speed check was conducted at over the period 1st – 14th November. A total of 60068 vehicles were recorded, with an average speed of 39.8mph and an 85th percentile speed of 44.3 mph. This

represents an increase of 21% over the last check in 2014, when 26668 vehicles were recorded over 7 days, and supports the general parishioners' sense of an increase in traffic on the A362 as represented in the September meeting. However, unfortunately, to qualify for Speedwatch, the 85 percentile speed has to be over 46 mph. A Speedwatch cannot now take place.

The visibility of the volunteers operating the Lorry Watch appears to be having some effect on vehicle speeds and the longer this can be kept up the better. There is always room for more volunteers to man the Lorry Watch and anyone interested please contact Gill Sheppard or Simon Jasper know.

Corsley Heath Advisory Visit

A visit from a Traffic Officer to advise the Parish Council on potential additional safety measures on the A362 has been promised, date to be confirmed. The results of this visit would then be used to present requests to the Area Board and CATG. Any action would require allocation of sparse CATG funding, plus the now ubiquitous 25% contribution from the PC.

Lorry Watch (vehicles over 18t travelling west on A362)

Reports continue to be passed to the responsible Council Officer who acknowledges there is an issue from the volume of reports. This acknowledgement is the first step to moving from a "pilot" to an "official" scheme. Separately, through the CATG, an RDF Checker has been booked which should give a better picture of over 18T traffic, in both directions.

Old School Playing Field (OSPF)

Maintenance

This year the OSPF has been mowed by a volunteer team using the Corsley Memorial

Playing Field (CMPF) mower , a scheme which worked well and made a useful saving for the Village. The PC is very grateful for all those who helped, particularly the CMPF Committee for the loan of their mower. The principle is good and it will be repeated again next year, though probably with a couple of extra sessions programmed to keep the grass down during the growing season.

New OSPF entry gate

As a result of re-negotiation of the sub lease of the OSPF with Little Cuckoos, it was agreed that the PC would provide a new entrance to the public areas of the OSPF so as to avoid the need to cross the area used by Little Cuckoos to gain access to the OSPF. Following completion of the conversion of the Old School, several lengths of the old steel hooped fencing, plus gates, are now in the possession of the PC and is intended to use some of these pieces, including the old gates, to create new vehicle and pedestrian entrances to the OSPF between the eastern end of the tennis court and the north/south boundary of the Old School.

Finance

In-year statement

The precept for 2017/18, ie Corsley's share of your Council tax, was £8556, which represents £15.56 pre elector. Additional income was derived from Little Cuckoos , for their sub lease of an area of the OSPF, and a one off payment for contractors' access across the PC car park to the Old School site during building operations.

The spending plan for FY 17/18, in percentage terms, is:

Grants and donations	36%
Administration	29%
(includes clerk's salary, insurance, WALC etc)	

OSPF/streetscene	24%
(includes provision for new OSPF entrance work and PC contributions to CATG projects)	
Reserves	9%
(PC asset repair fund – OS car park/bus shelters/unforeseen items)	

Other than grants/donations and training, all other items have been spent or committed. The amount available for grants and donations is around £3500 and is traditionally used to support community organisations and projects. There is a notice elsewhere in the Bridge seeking bids, with details on how to apply.

Future Plans/Precept bid for 2018/19

The future projections for the next three years carry on with the same pattern of expenditure with two key exceptions.

First, the access payment for the Old School conversion contractors was a one off “windfall” and will be missing from future budgets. It is anticipated that this will have little impact on the future budgets since this money will be used in this FY to fund the new OSPF entrance.

Second, the PC is now having to face the expectation of regular contributions to any CATG projects in the Village of 25% of their cost. This year this amount was £540. Since this is the first year in which we have contributed in this way, any prediction of future costs is an inexact art, particularly as there is always uncertainty in which FY the payments will fall. For next year the working assumption is that this cost be of the same order. This will be reviewed in 12 months time.

As a result of this new spending element, the precept bid for next year has been increased

in line with inflation, plus an additional 6% to cover the predicted CATG contributions. The precept bid for next year will thus be £9275, an increase of 8.4% over the current FY, representing £16.90 per elector.

Annual Parish Meeting (APM) 2018

As already mentioned in last month’s brief, all Parish Councils in England are required by law to hold an Annual Parish Meeting. It is not a PC meeting, but a Village gathering, with the PC providing the Chair. The meeting is intended to allow the PC to explain what they have been doing over the last year and local community organisations, if they so wish. It is also the occasion for electors to have their say on anything which they consider is important to the people of the Parish. The meeting will take place early in March at a date yet to be finalised.

In the recent past, the PC has offered the subjects for discussion, with Broadband and Longleat’s plans being the mainstays in recent times. However, the PC would very much like to hear from the Village what its concerns are and what it would like to see on the agenda. There is a notice elsewhere in this Bridge advertising the APM, giving details and seeking your input

Neighbourhood Watch

Corsley has now been without a Neighbourhood Watch Coordinator for some considerable time. The role is important, but not an arduous one and the main task is the receipt, collation and dissemination of information to and from a network of local hamlet-level contacts. It requires liaison with the local Police and the area Neighbourhood Watch organisation to receive information and the sharing of crime stopping information with as many

www.corsleyandthebridge.co.uk

of the residents as possible through the local network. It is a key role in today's straightened times, when Police resources are severely stretched.

If there is anyone who has an interest in learning more about this role, then please let me know.

Dates of next meetings

Annual Parish Meeting
March (exact date to be confirmed)

Annual Parish Council Meeting
7.30 pm, 7 May

Quarterly Meeting 7.30 pm, 11 June

Quarterly Meeting 7.30 pm, 3 September

Quarterly Meeting 7.30 pm, 3 December

There will be occasional meetings at short notice; please watch the village notice-boards.

Best wishes from the PC for the New Year celebrations.

Neil Britten
Chairman

01373 832515/07810 764714
neil.britten@btinternet.com

www.britishcycling.org.uk/club/profile/8023/corsley-cycle-club



*Fulfil a New Year's
resolution with
Corsley Cycle Club*

NEW MEMBERS WELCOME!

Contact either
Ollie Payne
07825 940235, or
Rob White
Acres Supply Garden Centre
01373 832591



NOTEBOOKS **2** GO

Desktop PC - Laptop - Smartphone - Tablet

Apple - Macbook Pro / Air - iMac - iPhone
iPad - Mac Mini

Repairs / Upgrades / Accessories

Notebooks 2 Go / Tech Repair
51 Haynes Road, Westbury, BA13 3HD

Tel - 01373 865400
Email - support@notebooks2go.co.uk

Cross Keys

Community Free House

Lyes Green, Corsley, BA12 7PB

Open all day!

Bar

Monday to Saturday

11 am - 11 pm

Sunday 11 am - 10 pm

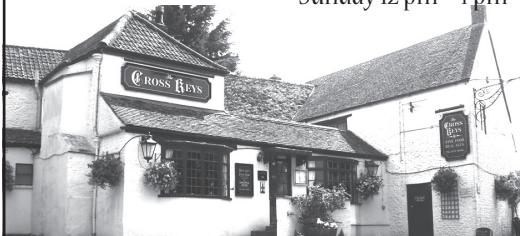
Food

Monday to Saturday

12 pm - 2.30 pm and

6 pm - 9 pm

Sunday 12 pm - 4 pm



01373 832406

www.crosskeystcorsley.co.uk

Facebook @CrossKeysInnCorsley

Corsley Tennis Club



New members welcome –
all ages, all abilities

Three hard courts available all year

Weekly junior coaching available

Low subscriptions

Contact either

Emma Fox 07512 009580

Sue Newell 01373 825560

www.corsley-tennis.uk

Little Cuckoo's Pre-School

Lyes Green, Corsley, BA12 7QH

Friendly, dedicated pre-school in the heart of the
countryside for children aged 2-5 years

Monday, Wednesday, Thursday and Friday

9 am - 3 pm during term-times

We accept 2-year-old funding in
accordance with Wiltshire Council guidelines

Mother and Toddler group Tuesday mornings

10 am - 11.30 am during term-times

SESSIONS AVAILABLE NOW

Speak to Hayley McMahon

Pre-School Manager on 01373 832298

Find us on facebook or visit www.littlecuckoos.co.uk

A free trial session is available

Registered Charity Number 1064800



CHRIS SEVIOUR
Building Services

07894 708949

cmseviour@gmail.com

Roofing, Loft conversions,
Extensions, Plastering,
Natural stonework



S B Services



Contact Sean

07828 671566

*For your garden maintenance
and home improvements*

Seven Open Doors

Dear Friends,

January in the Church's calendar is a month in which there appears to be a yawning gap between what the church is focusing on and the concerns of wider society. For most people, January is about the sales, about planning a holiday to get us through these last dark months of winter. Once we get past New Year, Christmas is but a distant memory as the last of the mince pies are consumed, the decorations packed away and the pine needles are swept up and disposed of along with a now very sad looking tree. But the full season of Christmas actually lasts until Candlemas, which this year will be celebrated on Sunday January 28th, and we also have the feast of the Epiphany, which falls on January 7th.

As many of you know our eldest daughter is married to a Spanish chap and they live in Spain, (actually our other daughter's partner is Spanish too; what makes Spanish men so attractive???) Anyway, every Christmas Emily and Jose Antonio come to us for about a week so they enjoy two big celebrations. In Spain, the major festival of the season is not Christmas Day, but Epiphany, 'Fiesta de los tres Reyes Magos' meaning festival of the three magic Kings, and this is when Spanish children will wake up to find that the three kings have left gifts for them in their house. On the eve of the Epiphany there are processions all over Spain where sweets are thrown from floats as people come out to watch the three kings arrival.

So what gifts has Epiphany got to offer us as we move into another year? Mention the word Epiphany to me, and my mind immediately swings to T.S. Elliot's atmospheric and evocative poem 'Journey of the Magi':

'A cold, coming we had of it
Just the worst time of the year
For a journey, and such a long journey:
The ways deep and the weather sharp,
The very dead of winter'

The wise men had a long, long journey to make, to lands far away with no map nor guidance to follow, only a bright, bright star to follow. I wonder what star we will follow this coming year? Where will it lead us, and will we be able to lift our heads from the minutiae of our lives long enough see it? Or are we caught in the 'very dead of winter', finding it difficult to see the possibility of movement or progress in the deep darkness we find ourselves? All of us experience the ebb and flow of life's complexities and sometimes it is actually necessary for us to stay a while in that cold inhospitable place of deep winter to work out what the next step forward might be, and what we need to let go of in order to be able to lift our eyes to that star once more. In the last stanza of the poem, the narrator asks the question: ' – were we led all that way for birth or death? / There was birth certainly/ we had evidence and no doubt, I had seen birth and death/ But I had thought they were different;/ this birth was hard and bitter agony for us like Death, our death.' Paradoxically, in order for new ways to come to birth there first has to be the agony of death to open up the space for new life.

Wherever you find yourself at the beginning this new year, I hope your star shines brightly and that your journey brings you hope and joy.

Love and prayers, Pauline

January Church Diary

Tuesday 2nd January

**7.30pm at 93 Lyes Green, Corsley
After Alpha Home Group**



Sunday 7th January: Epiphany

8am at St Michael the Archangel, Brixton Deverill: 1662 BCP Communion

9.30am at St Margaret of Antioch, Corsley: Eucharist

10.30am at St Peter & St Paul's, Longbridge Deverill: Family Worship



Monday 8th January

**10.30am at 5 Brimhill Rise, Chapmanslade
Time to Think Group**



Sunday 14th January: Second Sunday of Epiphany

9.30am at St Philip & St James', Chapmanslade: Family Holy Communion

11am at St Mary's, Temple, Corsley: Matins

11.15am at St John the Baptist, Horningsham: Plough Sunday service



Tuesday 16th January

**7.30pm at The Anchorage, Corsley
After Alpha Home Group**



Wednesday 17th January

**7.30pm at High Field, Roddenbury View, Corsley
Parochial Church Council**



Thursday 18th January

**10am to 12pm at the Three Horseshoes, Chapmanslade
Church & Community Coffee Morning**

Sunday 21st January: Third Sunday of Epiphany
10.30am at St Michael the Archangel, Brixton Deverill: Eucharist
10.30am at St Margaret's, Corsley: Family Worship



Monday 22nd January
10.30am – details from Phil on 832845
Time to Think Group



Wednesday 24th January
12.30pm at The Reading Rooms, Corsley
Lite Bites Soup Lunch



Saturday 27th January
10am at the Reading Rooms, Corsley
Parish Strategy Meeting



Sunday 28th January
Presentation of Christ in the Temple
9.30am at St Philip & St James', Chapmanslade: Eucharist
10.30am at St Peter & St Paul's, Longbridge Deverill: Eucharist
3.30pm at St Philip & St James', Chapmanslade: Christingle making
4pm at St Philip & St James', Chapmanslade: Christingle & Candlemas



Tuesday 30th January
7.30pm at 129d Forest Walk, Chapmanslade
After Alpha Home Group



Sunday 4th February: Second Sunday before Lent
8am at St Mary the Virgin, Kingston Deverill: 1662 BCP Communion
9.30am at St Margaret of Antioch, Corsley: Eucharist
10.30am at St Peter & St Paul's, Longbridge Deverill: Morning Worship

Fundraising

As is customary we went carol singing along Chapmanslade High Street on Monday 18th December raising funds for the Children's Society. We thank everyone for their kind donations which went to the Children's Society. Our thanks to Ben at the Three Horseshoes for providing a warm finishing point with much appreciated sustenance.

Two years ago we held a very enjoyable musical evening at St Margaret's. Plans are well advanced for another evening on Friday 16th March. Do please keep this date free in your diary.

We run a 50/50 Club and welcome new members in 2018. The 50/50 Club costs £24 per year and you may hold multiple memberships. 50% of the membership fee goes to church funds, with the other 50% being returned as cash prizes. The draws for these cash prizes are held twice a year. There are ten prizes ranging from £200 to £25 at present at each draw. If you want to join the club or take out another membership please contact either Neil Britten or Keith Muston.

Messy Church

We were pleased to be invited to the School Christmas Fair where as well as running a stall of things for the children to do, we also provided a small choir who sang carols beautifully.

On the 28th January we shall be holding a Christingle and Candlemas service at Chapmanslade. We shall commence at 3.30pm for people to make their Christingles. This will be followed by the Christingle and Candlemas service at 4pm. There will be refreshments afterwards.

Strategy Meeting

On Saturday 27th January from 10am to 12mid-day at the Reading Rooms we shall be holding a meeting on the future strategy of the church in the Parish and the community. We shall be discussing how we can meet the spiritual needs of people, young and old, in a changing world and ensure that we hold the community at the heart of our church. We will investigate how we might be able to ensure that our church buildings meet the changing needs of the community and where any funds would be best invested. Everyone is invited to come along and join in the discussions. Coffee and cakes will be provided!!

Rural Dean
Lay Pastoral Assistants

Rev Pauline Reid
Richard Dean
Barbara Hughes
Claire Tanner

01985 841290
01373 832594
01373 832273
01985 218099

Copy for Seven Open Doors should be sent to Keith Muston at
themustons@btinternet.com subject 7ODs or phone 01373 832755.

If you would like to receive weekly news of Church events and activities, please send your email address to the above, with subject 'Through the Open Doors' or download a pdf from the 'churches' pages at www.corsleyandthebridge.co.uk

Expert repairs for
PCs & Laptops
Macs
iPads
Tablets



Tuition available
Macs, PCs and iPads

Take the stress out of IT
Call Today!

Security Review of
your computer

01373 470170
www.frometech.co.uk

Registered Osteopath

Philip Sefton D.O.

'Treatment from head to toe'

Over 20 years' experience of treating back,
neck, shoulder, muscular and joint pain

Manor Road · Marston Estate · Frome · BA11 4BN
01373 455993 www.phillseftonosteopath.co.uk

Ski Apartment – French Alps

Ski in/ski out – sleeps 6

Well equipped – immaculate condition

For more information or to book online visit:

w. www.ski-les-cimes.co.uk

f. facebook.com/ski.les.cimes

e. lesleygolledge@gmail.com

t. 01373 832533

npv plumbing & heating

Installation • Servicing • Repairs

Bathroom and tiling specialists

All plumbing and heating work undertaken

Our fully qualified plumbers offer all general
plumbing services from boilers to bathrooms.
We will gladly advise clients on the most suitable
products for their property – be it heating
systems, boilers, radiators, bathrooms or showers.

07738 940355

www.plumbersfrome.co.uk

Hypnotherapy

If you need help with:

Anxiety

Depression

Phobias (such as flying or spiders)

Panic attacks

Relaxation

Weight management

Smoking cessation

Natural childbirth

Confidence

Public speaking

Exam nerves

and much, much more...

Call ANJI HOLLAND on

07944 647 978 / 01373 832 898

to enquire or just for a chat

www.hollandhypnotherapy.com

With practices in Chapmanslade and Bath

I am a member of the National Council for Hypnotherapists
and am bound by their code of practice and ethics

Corsley WI

December news



By the time you read this, Christmas festivities will be over and we begin the New Year full of expectations that it will be better than the year just gone! I hope you all had an enjoyable Christmas and wish you all happiness for 2018.

The Christmas celebrations for Corsley WI took the form of a "Bring & Share" lunch for members, including soup and puds, at the Reading Room in December, with musical entertainment provided by Geoff Titt at the piano, a quiz to enjoy, a secret Santa and some Christmas humour and fun. The competition was for a table decoration with a candle and members had made such beautiful arrangements that it was hard to decide on the winner.

Several members attended the recent workshop run by Val Benbow on making Christmas tree decorations and everyone was able to take home a lovely ornament they had made.

Are there any other workshops that members would like us to organise?

On **Friday 20th April 2018**, we have a coach trip (open to all) to the Royal Mint Experience. To book a place to the Royal Mint, please ring Carol Seward on 01373 832446, or email carol.seward@talktalk.net for details and any other information about Corsley WI.

Full details of future events organised by the Wiltshire Federation are always available at our meetings, including the talk by Pippa Greenwood on Gardening, a visit to the

Poppy Factory, a basket-weaving workshop and a morning with Mendelssohn. Through the Federation, we all have access so much more than we can provide in our WI locally and it gives us many great opportunities.

At the meeting of Corsley WI on **Thursday 11th January at 2.30pm**, the speaker will be Mel Colbridge, who is to give a demonstration about celebration cakes, called "A Bite of Delight". The competition for members is for a tea-towel.

January is a good time to join the WI and on payment of the annual subscription, members receive a booklet of discount vouchers and offers, with potential savings of much more than the cost of the subscription. Are you new to the area? Don't know anyone? Why not come along to our meeting? WI meetings are held in the Reading Room at Corsley on the second Thursday each month at 2.30pm until March 2018, then in April the time will change to 7.30pm. We can usually help with travel if needed or arrange for someone to come with you.

Can you play skittles or scrabble, or would like to learn? We are looking for new team members.

The Bridge Club, Gardening Club and Lunch Club are open to both members and non-members and are run by Pauline Scott. Phone 01985 215760 for meeting dates and venues.

CHAPMANSLADE PLAYERS PRESENTS

OLD MOTHER HUBBARD

Tickets
£5 Adult
£3 Child

FRI 9TH FEB 7.30PM

SAT 10TH FEB 2PM & 7.30PM

AT CHAPMANSLADE VILLAGE HALL

**TICKETS FROM BARTERS PLANT CENTRE
& LOU KNIGHT 07806 486295**

Chapmanslade.panto@gmail.com

PosterMyWall.com

Chapmanslade Motor Services

**Vehicle repair
and servicing**



**Brake
specialist**

**Batteries
Exhausts
Tyres**

**MOT preparation
and repairs**



Quality service at competitive rates

FREE ~ wheel balancing and tracking with new tyres

FREE ~ courtesy car

Electronic diagnostics available – most makes covered

Green Farm Industrial Estate, Chapmanslade

01373 832188 or 07711 256927



**01373
455911**

CLEANING & MAINTENANCE 2000 LTD

OUR SERVICES INCLUDE

- Domestic Cleaning
- Commercial Cleaning
- Upholstery Cleaning
 - Carpet Cleaning
- One off Spring Cleans
- Garden Maintenance
 - Home & Garden Clearance

.....
f www.busybees2000.co.uk **t**
info@busybees2000.co.uk

**JOHN E S JONES
& SON LTD**

**GENERAL
BUILDER**



Carpentry, painting and
decorating, extensions, uPVC,
fascias and gutters, fencing,
decking and patios

Please call

01373 832600

07795 177920

07810 646335



Your Invitation to **Christingle** **at Candlemas**



**On Sunday 28th January we are making
Christingles in St Philip and St James
Church Chapmanslade at 3.30pm,
Followed by our
Christingle at Candlemas
Service at 4pm**

Come and make a Christingle and
help to tell the story on a dark
winter's afternoon.

This is always a wonderful candlelit
celebration for all ages.

Being held in aid of the



The
Children's
Society

Stay for a chat

Please stay afterwards and enjoy
biscuits and cakes with hot and cold drinks
Find further details at www.cleyhillchurches.org

TEA & sympathy

Considerate catering at a difficult time

All our food is homemade, we provide delicious teas, sandwiches and cakes through to more elaborate options.

We offer a truly bespoke, caring and professional service.



Telephone Kim Clark on 01373 832151 or 07843 056916

e-mail kim@teaandsympathy.uk.com

www.teaandsympathy.uk.com

CHANTRY CONSTRUCTION

stone walling • patios

drives • extensions

prompt reliable service

mini digger and driver for hire

01373 836787 07855 343388

COMPUTER & LAPTOP REPAIRS
UPGRADES / SYSTEMS & LAPTOPS

VIRUS REMOVAL / BROADBAND

WIRELESS / NETWORKING



FAST, FRIENDLY, PROFESSIONAL SERVICE

COMPETITIVE RATES

ONSITE OR WORKSHOP

CompTIA
A+ Certified

call
01373 302901

www.ntscomputing.co.uk

help@ntscomputing.co.uk

LAPTOP REPAIRS

We also replace
laptop screens,
keyboards,
CD-DVD drives,
fix overheating
and more

Forget-me-not 

• GARDENING SERVICE •

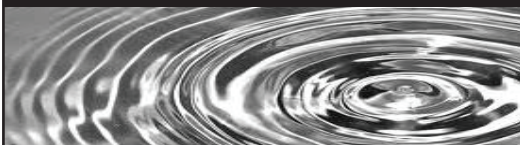


Weeding, pruning, planting,
fence painting, etc

01373 464416

07890 850465

Do you need a
plumber? Call...



Paul Antell Plumbing

07890 366832

01373 467427

Professional, reliable, friendly and local

paulantellplumbing@talktalk.net

www.paulantellplumbing.co.uk



www.darchoil.com

BOILER SERVICING & REPAIR

**All our technicians are
OFTEC registered and approved**

Call us on **01935 473302** for an instant quote or visit www.darchoil.com, fill out the form and one of our team will call you back during office hours

- Boiler servicing on-demand or as part of a Contract Service Agreement
- Servicing of oil, commercial and domestic boilers undertaken
- Group discounts available on request – call us for information

Call us on **01935 473302** or email **info@darchoil.co.uk** for more information

EVERGREEN GARDEN SERVICES

Garden maintenance and landscaping, lawns, strimming, hedging, pruning long and short term maintenance, patios fencing, turf and seeding.

Over 20 years experience in horticulture, landscaping and estate management.

Contact Ben Hale

01373 825495

07879 492283



Rose Knight

Dog and cat
minding service

01373 464904

07773 435254

knight_rosemary@sky.com



Seasoned Logs

free local delivery

Tel / text Garry on 07801 179917

loads from £110.00

James, Rob and Adam former Employees of
ROGER PATCH LIMITED
Are pleased to introduce:-

CMP COMPLETE LIMITED
GENERAL BUILDERS

19 Swaledale Road, Warminster, BA12 8FH

Contact James: 07801 868288

Email: cmpcompleteltd@gmail.com



Cross Keys News

A community Free House

We'd like to wish all our customers a very Happy New Year. It was great to see so many of you over the Christmas period and we look forward to welcoming you back soon. For those of you who have made healthy New Year resolutions, lighter versions of our meals are available and there is plenty of choice for those looking for non-alcoholic drinks. **Please note the opening hours have changed.**

Our first event of the New Year will be on **Monday 15th January** and will be a **Fish and Chips** evening, pre-booking is recommended. There will be a choice of fish, chips and a drink for the price of £12.50.

Burns night – Thursday 25th January will be celebrated in the pub, details can be found on our website or ask in the pub. It's always a friendly, welcoming evening, bring your family or friends or come alone. Everyone is welcome.

Our popular **Quiz Night**, will be held on **Sunday 28th January**. Why not make up a team with your friends or neighbours? Starting at 6.30pm; a maximum of 5 people

per team at a cost of £2 per person, or £5 per person to include a light supper of chips and sandwiches. Book your place by calling the pub. If you'd like supper, you will need to book by **Saturday 27th January**.

As a Community pub, we welcome your suggestions. We want to provide a welcoming venue for you, your friends and families. There is a suggestions box in the pub and if you have any events you'd like to see hosted at The Cross Keys, pop down and

let us know. **Dogs are welcome** in the bar, we have a jar of dog biscuits for them with a suggested donation of 10p towards the defibrillator fund. We can also host parties and private functions in the Oak Apple Room.

Opening hours

Monday to Thursday 11 am to 3 pm and
6 pm to 11 pm

Friday to Sunday 11 am to 10 pm

Food served

Monday to Saturday 12 noon to 2.30 pm
and 6 pm to 9 pm

Sunday 12 noon to 4 pm

Keep checking the website www.crosskeyscorsley.co.uk or our Facebook page Cross Keys Inn Corsley for details of all these events and other news.

Alternatively, contact the pub on
01373 832406 to book a table.

We look forward to seeing you soon.

Cinema Corsley



Sponsored by
The National Lottery

December's special film night, 'Memories of Corsley and Chapmanslade' stripped away the years for many and exposed the rest of us to a palpable sense of the people and events who wrote the real history of our villages. It was very rewarding to see so many people in the Reading Room chatting, sharing memories and gently educating through their shared experience. We were very lucky to have David Parker and Colin Thomas from Available Light Productions to talk to us about their film 'Death of a Sociologist' about Maud Davies and then to share some local short films. John Chandler, who stars in the film and is a local historian and Jane Howells, who wrote the introduction to the book 'Life in an English Village, which the film was based on, were also there and gave a fascinating insight into Maud's life. Thanks also need to be extended to Dennis Barnard and Tori Hutchings who entertained and informed us about the difference between the two villages and events in Corsley that were of national significance. We would also like to thank everyone who lent us their photos and documents for the display, especially Michael Forward and Keith Snelgrove who were also on hand to talk to people at the exhibition when it was open on the Friday and Saturday. So many people thanked us for the evening that we hope to be able to put on something similar in 2018.

Special evenings like this have been made possible by the continued support of those who regularly attend Cinema Corsley to whom we would like to extend a big thank you. As we now have our own new equipment, awarded to us by the British Film Institute, the money we raise helps to maintain this equipment, as well as contributing to the running of the Reading Room. We are always open to film suggestions so please do tell us your ideas.

Thursday 18th January My Cousin Rachel (12A)

This is a highly enjoyable story which is part dark romance and part mystery thriller, from the novel by Daphne du Maurier. 'My Cousin Rachel' tells the story of a young Englishman who plots revenge against his mysterious, beautiful cousin, believing that she murdered his guardian. But his feelings become complicated as he finds himself falling under the beguiling spell of her charms. Rachel Weisz gives a tremendous lead performance which is mean, minxy, manipulative and very charismatic. It is Gothic melodrama with wonderful Cornish scenery.

Doors open 7pm for a 7.30pm start at Corsley Reading Room. Tickets £6 to include a free cup of tea or coffee. Refreshments and licensed bar also available

If you have any special requirements, or need to use the hearing loop, please inform us before the event and we will try to help.

The next Cinema Corsley dates are:

Thursday 18th January	Thursday 15th March
Thursday 15th February	Thursday 19th April

One Team

Community Policing

PCSO Debbie Robbins from the Warminster Rural team brings us some top tips to keeping all our stuff safe and sound

The festive season and new year sales are particularly tempting for criminals as they expect to find gifts and high value goods in people's homes and cars. It is important to ensure that your house is secure and that you take precautions to stop criminals who will have no thought about taking your stuff. Our towns will be exceptionally busy and with increased numbers of people on Wiltshire streets it is easier for thieves to strike unnoticed.

Don't be a victim of crime whilst out and about shopping:

- When out shopping, keep your purse and handbag near you
- Keep any cash that you may have on you to a minimum
- Mobile phones and wallets in back pockets are a target - ensure that you keep them secure and out of sight
- Be careful at cash machines and when paying with your card - shield your PIN at all times.

Don't let your vehicle be an easy target:

- Don't leave valuables like laptops, mobile phones, handbags, credit cards, cheque books or vehicle documents in your car. If it is unavoidable - put them in the boot and ensure equipment is completely switched off
- Remove SatNav systems and clean away suction marks on windows
- Make sure car doors, windows and sun roofs are all properly closed and locked

- Remove your stereo if you can - mark it with the vehicle registration number if you can't
- Leave your glove box open to show that there is nothing in it
- Leave absolutely nothing on show - you may know that there is no wallet in your jacket, but a thief will break a window just to check.
- If you own a van, make sure you remove tools overnight and display an appropriate sign in the rear window making this clear.

It is equally important to keep you and your property safe:

- NEVER open your door to anyone who hasn't made an appointment - if you are expecting them, always check their identification and if you are at all suspicious, contact Wiltshire Police by dialling 101
- Close and lock all windows and doors when leaving the house - even if you are just going into the garden
- Keep front and back doors locked whilst you are in your home to prevent individuals walking in without your knowledge
- Close all windows when leaving a room - especially those at the front of the house
- Double-check that all doors and windows are locked at night
- Keep valuable items out of view and reach of windows and doors
- Never leave a spare key in a hiding place

like a plant pot or letterbox – a thief knows all the hiding places

- Keep car keys out of sight - never leave them on view
- Hide financial documents – if someone does break in, you won't want them to be able to steal from your bank account as well
- Lock tools and ladders away so that a thief cannot use them to break in
- Make sure you have good lighting around your property
- Consider investing in a burglar alarm
- Secure the rear access to your home – thieves are less likely to be seen at the rear of your property
- Make sure any hedging at the front of your property is no higher than one metre. This will allow a passer-by or neighbours to see anyone acting suspiciously
- Mark all valuable items with a property marking system identifiable to you
- Take photographs of all jewellery including hallmarks and keep them safe. Don't leave valuable jewellery in a box on your

dressing table - it's the first place a thief will look

- Make a list of the serial numbers of your electronic items and keep it safe
- Make sure you have up-to-date contents insurance
- Register all electronic items and any others with serial numbers at sites such as Immobilise.co.uk

It is important not to stop thinking about safety after the sales too. Make sure you don't put your rubbish out too early. Putting packing and boxes on display will advertise all the new items you have in your home providing thieves with a checklist of your equipment for them to steal.

*PCSO Debbie Robbins
Community Policing Team - Warminster
07471 029247
debbie.robbs@wiltshire.pnn.police.uk
Warminster Police Station
Station Road, BA12 9BR*

Corsley Broadband Project

The installation and commissioning of the cabinet at St Margaret's Church is now complete. The sole purpose of the Corsley Broadband Project Ltd was to contract with Openreach for that cabinet, since its work is now done the company will be wound up in January.

The cabinet at Deep Lane/A362 should have been commissioned by the time of this publication. (See website below for more details as they become known)

Until such time as the whole of what has been indicated by BT and Wiltshire On-line is completed, the website with latest news and tips will continue to be maintained in the hope it will be helpful. Please refer to it for latest news and helpful advice, especially if you decide to connect at the substantially higher speeds that may be available to you and find your devices do not seem to give you the speed you expected!

hdwebsites.wixsite.com/broadband

Steve Dayman-Johns **Driving Instructor**

Condensed Courses and
Gift Vouchers available

Tel 01373 865422 - Mob 07730 445648
email stevekdj@gmail.com

anatomy clinic

Beauty, Chiropody, Holistic

28 East Street Warminster BA12 9BN



t. 01985 219122

w. anatomyclinic.co.uk

f. [anatomy clinic](http://anatomyclinic)

Dashing Dusters

- Cleaning and ironing to a high standard
- General domestic assistance
- Commercial cleaning
- Reliable
- Reasonable rates
- References available

01373 832484 (evenings)

M W Garden Services **20+ years experience**

A tailor made service for all
types of garden maintenance
Insured and CBI's checked

mark22.weaver@mypostoffice.co.uk

Telephone 01373 832854

Mobile 07921 818452

Piano Lessons

All standards welcome

Debbie Rickhuss

Teacher of Pianoforte and Theory

Contact 01373 832829

07747 499990

rickhuss@tiscali.co.uk



Hardwood logs for sale

(cut to size if required)

FREE DELIVERY

R M Log Supplies

Beckington

Call Robin on

07876 621929

Whitbourne Chapel

A Peaceful and Prosperous New Year to all!

January Preachers:

7th – P Coles, businessman from Stratton on the Fosse

14th – Paul Stinchcombe, preacher with the Open-Air Mission

21st – Andrew Coxhead, based at Clink Evangelical Church

28th – Russell Short, also based at Clink Evangelical Church.

Corsley's Millennium Stones

On my way to the Chapel I pass two large boulders marking Whitbourne Springs and Long Hedge. Each Corsley hamlet has one of these, commemorating the new millennium in 2000. Possibly 3000 odd years ago the Israelites engraved a large stone with the word Ebenezer, which means Stone of Help. What an encouragement to be reminded of God's help at the beginning of the year! Help in past times and our trust in God's help for the future.

Roger Hopwood

Reflections on 2017

It's been an interesting year at the Chapel, with a lot of work being done by younger members of the congregation. The kitchen, hallway and facility floors are being tiled, a great improvement on the lino we had before.

During the school summer holiday the back rooms were painted; the new colour scheme

is very restful on the eye. The kitchen units have new doors fitted and, with the new window, the room is much brighter. A 'work party' has tidied the graveyard, trimming back the hedges and apple trees and doubling the amount of light we have in the kitchen and the school room.

It's been a good year in terms of preachers, too; one new face (to me) was Peter Atwill of the Canal Ministries, who was interesting and inspiring as he spoke of his work, particularly on the Kennet and Avon canal he and his wife use as a base mooring.

As we enter 2018, if you've been thinking about the future and what it holds for you, why not come along to one of this month's Services and find out how much fuller your life can be?

Have you met this man?

We see in godly Canon Schell
Endurance, wisdom, grace.
The love of Jesus Christ his Lord
Reflected in his face.
Preaching, teaching, charity -
His help to people knows no end.
God's final word to him will be,
"Well done, my truly faithful friend."

RH

Gill Redman

01985 215062

paradiselost@btinternet.com

Regular times

Services every Sunday morning at 11.00 for about an hour (coffee served at 10.45)

Chapel Prayer meeting every Sunday morning from 10.20 - 10.40

Communion on the first Sunday of each month at 12 noon for 15 minutes

Bible study sessions as announced



COMPUTER PROBLEMS?

01373 812804

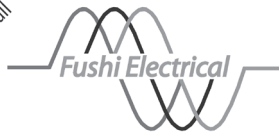
Email
Advice for new users
Anti-virus defence
Web sites
Custom programming

Networks - home & office
Home tuition
Web access
Privacy & security
Repairs

www.technojeeves.com

info@technojeeves.com

No Job Too Small



Local Electrician

Part "P" registered NAPIT approved
Domestic and Commercial Work Undertaken
Third Party Testing

Call for a Free no obligation Quotation

Tel: 01749 850769

Mobile: 07779 429786

email:

ian@fushi-electrical.co.uk

www.fushi-electrical.co.uk



E G MARTIN LTD Heating Oil Distributors

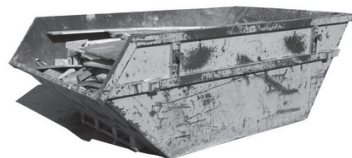
Telephone 01373 822784

Victory Road, West Wiltshire Trading Estate
Westbury, Wiltshire, BA13 4JL

WESTERN SKIP HIRE

Telephone 01373 865247

Victory Road, West Wiltshire Trading Estate
Westbury, Wiltshire, BA13 4JL



Windows, Doors & Conservatories

- Free quotes from our local experts
- Strengthen your home's security
- Reduce your heating bills
- Excellent offers

up to
45% OFF
selected
WINDOWS & DOORS

01985 215566
www.newwindowsltd.co.uk

**New
Windows**



Corsley Reading Room

Your 'village hall'

Chairman, Hugh Deed, reports on the latest happenings at the hall

2017 was seen out in style with a number of events at the Reading Room; notably the sell-out Cinema evening featuring the Maud Davis film and all about Corsley and Chapmanslade including the exhibition. A thoroughly enjoyable and educational evening. We know some people were disappointed to not get tickets for this event and the possibility of another showing of the film is being investigated. Liz Garrett and Phil Plumb are keen to build on the success and create a lasting (on-line) library recording the village history before all the photographs and documents that people may have are lost forever. Watch out for information about this in 2018.

The dates for 2018 Cinema Corsley season up to April are: Jan 18, Feb 15, Mar 15 and Apr 19, and are hopefully in your diary already. Several people were disappointed not to get tickets for the December showing so buy your tickets for these events early to avoid missing out!

The first coffee morning of 2018 is on January 2nd!

Events run by the Corsley Reading Room Management Committee

Coffee Morning:

First Tuesday of the month 10 am - 12 noon

IT Classes/Club:

13th December 10 am - 12 noon

Cinema Corsley:

18th January, 7 pm for 7.30 pm start

We have organised a special event for Thursday 22nd March (afternoon) about computer security. This will be presented by Wiltshire On-Line Safety (The Bobby Van Trust) and Tim Wilton will present and answer questions about how to protect yourself from scams and the like when using your tablet/ PC/ phone. Put the date in your diary now – all welcome. Entry will be free, with tea and coffee available. Start time will be confirmed nearer the date. The Bobby Van Trust is specifically set up to address these issues for the older generation, but this session is open to all.

We continue to enhance the hall and are planning to replace the curtains in the main hall in the near future.

The hall and facilities are available to hire. Full details about the hall and its facilities including how to hire are on the website or call Gill Parkinson (832322) to discuss. See website www.corsleyreadingroom.org.uk

Hugh Deed
Chairman@corsleyreadingroom.org.uk or
01373 832897

Regular events run by other organisations

Lite Bites Lunches: 4th Wednesday of each month

Yoga: Tuesday and Wednesday evenings

Pilates: Tuesday afternoons

Committee members include: Vanessa Hyde, Jackie Jasper, Sue Kerfoot, Gill Parkinson, Jenny Ruffy, Jill Westgate, David Carruthers.

TOENAIL CUTTING REFLEXOLOGY

IN YOUR OWN HOME

ALICE LEWIS

Telephone 01373 229335



Joe Ricks
Independent Financial Adviser

*Pensions, Retirement Planning, Equity Release,
Wealth Management, Mortgages, Financial Protection*

07828 860 018 joe@matherandmurray.co.uk
www.matherandmurray.co.uk

Wren House

Residence for the retired and elderly

Wren House in Warminster is a long-established, elegant retirement home, specialising in individual care in gracious surroundings. Having just thirteen rooms, each with a private bathroom, we are able to offer the ambience of a family home, together with caring staff and the facilities to enable our residents to enjoy their later years with dignity.

Wren House serves fresh, locally-sourced, home-cooked food. Residents enjoy a varied activity programme which includes a gardening club and our own choir.

Mrs Ellie Simmonds

Wren House Ltd, 32 Vicarage Street, Warminster, BA12 8JF

Telephone 01985 212578

wrenhousewarminster@hotmail.com

www.wrenhousewarminster.co.uk

ST DAVIDS WHITSAND BAY CORNWALL



Holiday Let
Sleeps up to 8
01373 464870

www.stdavidswwhitsand.co.uk



Karina

Mobile Hairdresser

Tel. 01373 832823

Mob. 07742 690337

Paul Ledbury Quality Painting and Decorating

30 years experience

INTERIOR AND EXTERIOR
GENERAL MAINTENANCE

5 Hampshire Gardens
Westbury, Wiltshire
BA13 3EX

Telephone 01373 858163
Mobile 07976 242045

CLARION

electrical

Part P registered & guaranteed



Making household electrical circuits work safely

clarionelectrical@btinternet.com

01985 216641 07766 355237

Fifteen
years in
the trade

RICHARD ROBBINS

City and Guilds Trained Gardener

All aspects of Garden work undertaken

07510 130083



allsorts
of
FENCING

Your local Fencing Specialist

Stock Wire / Post and Rail / Close board
Decking / Patios / Gates / Sheds / Pergola

www.allsortsoffencing.com

01373 832339 / 07710 180551

Also: Topping of Fields and Paddocks

Black Dog Farm Bed & Breakfast



You will find a friendly welcome and a hearty breakfast in our listed Georgian Farmhouse. The quality en-suite bedrooms contain everything you need to ensure a comfortable stay.

01373 832858

Black Dog Farm, Chapmanslade,
Wiltshire, BA13 4AE

Your Local Electrical and Property Services

Call or email now for a
free quote 01373 464577
enquiries@lawrencefairfield.co.uk

**LAWRENCE
FAIRFIELD**
Limited



www.lawrencefairfield.co.uk



KB Landscape

30 years in landscaping

Phone

01373 832371

Mobile

07951 297173

Kevin Brixey - for quality and experience

5 Red Cottages Corsley Warminster Wiltshire BA12 7PS

Landscaping
Patios and paths
Turfing and seeding
Brick and stone walling
Decking and pergolas
Block paving
Gravel drives
Pond work
Fencing

A view from over the hedge...

Countryside Matters

Maybe the New Year is the right time to look forward and to share my concerns for the future of our countryside

If we want a living rural museum, where is our food going to be produced?

Living where we do, you become ever more aware of urban sprawl; in the last few years our view of the Mendip Hills has been altered by wind turbines, industrial and housing estates creating both air and light pollution and greater numbers of cars and heavy vehicle movement than was ever envisaged. We've also witnessed the conversion of food-producing farmland to solar power farms.

What has happened in our communities? Our schools, shops, post offices, public transport, sheltered housing and local hospital have all but disappeared.

Sadly, cottages either to let or as starter homes are now extended or converted into holiday lets, putting them well beyond the financial reach of young villagers who want to stay in the village they were raised.

Over the years it has become apparent that there is less understanding between those working in the countryside and those now living in the countryside. The cockerel has always crowed early in the morning, farmers are renowned for starting work early and depending on the weather and their harvesting, finishing work well into the night. How many centuries have the church bells rung to call us to church for weddings,

funerals, historic events and weekly services?

I am concerned about the numbers of joggers, dog walkers, runners, horse riders and cyclists using our lanes without considering whether they are travelling too fast, especially farm vehicles and cyclists, taking up too much room and not wearing good visibility clothing.

Lack of education regarding countryside management; are children and young adults aware that litter is not something for others to pickup after them? The amount of fly-tipping going on in our countryside is horrifying. We must all start to be responsible for our environment.

Sadly the county agricultural schools and colleges are no longer providing the educational needs of farm employees, so either foreign labour has to be employed or more mechanisation used on the farms.

If we want our country to continue to provide food of the highest quality and to be a place where we are safe and happy to live in, we must let our local and national government know what is important to us and what we want from the changing agricultural policies for future months and years.

Next month - more news from down on the farm!

Judith Helliar

Corsley Parish Council

Bids for donations and grants for 2017/18

Each year the Parish Council provides donation or grants to a variety of Community and Village organizations and projects.

In recent years these have included:

Corsley broadband

Corsley Reading Rooms

War Memorial Playing Field

Corsley and Chapmanslade Parochial Church Council

The Bridge

Lane End telephone box project

Corsley Show

Village defibrillator

The Parish Council budgets on spending a total of around £3500 from the annual precept, i.e. your taxes, in areas such as community groups, sports and recreation, open spaces, entertainment and local issues

The bids should be able to show that the money will be spent in this financial year and should be by application to our Parish Clerk (he can provide the relevant forms). Up-to-date financial accounts must accompany a bid. Bids for grants towards defined projects are preferred , but this is not to the exclusion of donations to general running costs.

Bids should reach John Willcox on paper or email by
Tuesday 31st January 2018 to

corsleypc_jdw@aol.co.uk
01373 832171

Small ads

£1 for EACH item for sale or wanted (cash only please) - at one of the two drop-off locations)

Please note: no cash, no advert!

FOR SALE

Aluminium 3-section **loft ladder** with fittings (complies with BS7553;1992) – **£20** ono. Please contact Marion 07796 544565, 01373 832314 or marion@nmc2.co.uk

FOR SALE

Bang & Olufsen **BeoCord 2000 cassette deck** – **£50** ono. Please contact Marion: 07796 544565, 01373 832314 or marion@nmc2.co.uk

For up-to-date information such as occasional parish council meetings, church services, previous editions of The Bridge, local clubs, events, activities and lots of other useful information, please visit **chapmanslade.org.uk**

Answers to Bob's Bafflers

- 1 At a race course – it is a traditional method of signs used by bookmakers to communicate the odds of certain horses
- 2 Maine
- 3 She was due in by ten
- 4 Napoleon
- 5 Alexandra Mary
- 6 Dry ice
- 7 Emily
- 8 Cuba
- 9 28
- 10 Cat, cow, dog
- 11 Charles Bronson
- 12 Suez

Local organisation adverts

£2 per month for a small boxed advert or £7.50 for a full page. Full page adverts are allocated depending on space available and cannot be guaranteed. All monies must be at one of the two drop-off locations (Barbers Plant Centre or Acres Supply Garden Centre) by **4pm** on the **19th** of the month. Please note: no cash, no advert!

Trade advertising

Annual trade advertisements (12 issues, when space is available)

1 space	(69mm wide x 33mm high)	£22.00
2 spaces	(69mm wide x 66mm high)	£42.00
3 spaces	(quarter page - 69mm wide x 100mm high)	£60.00
4 spaces	(138mm wide x 66mm high)	£75.00
6 spaces	(half page - 138mm wide x 100mm high)	£104.00

Trade advertisement material should be supplied in print-ready format, to the chosen standard size and correct shape.

For trade advertising enquiries, please contact David James (Trade advert coordinator/ Treasurer) at either thebridge832@gmail.com or 01373 832443.

Darling Interiors

Made to measure Curtains & Blinds • Bedspreads • Tracks & Poles • Fitting • Competitive Pricing

Chosen in the comfort of your own home

Choosing new furnishings has never been simpler. We have an extensive range of exquisite fabrics from leading designers and suppliers to choose from. For the finishing touch, we can provide beautifully crafted tracks and poles from the Bradley range and other leading brands measured to fit different sizes of bay windows and straight windows.

Call today to book your FREE No Obligation Consultation



t: 01373 672 359 e: info@darling-interiors.co.uk w: www.darling-interiors.co.uk

cloud
homecare

Quality care and
support in Warminster
and the surrounding
villages



We are a small, Corsley based care provider

**We provide care to people who need support
to remain living in their own home**

**Please telephone or email us, or visit our
website for further details**

Tel. 01373 832 597 enquiries@cloudhomecare.co.uk
www.cloudhomecare.co.uk

Make plans for your garden this spring...



Turf



£3m²

Topsoil



from **£28 tonne**

Paving



from **£19m²**

Sleepers



from **£18**

01373 832591
www.acressupply.com
info@acressupply.com

Open 7 days a week!

Acres Supply
Corsley
BA12 7PP

FG COLLIER

KITCHENS • BATHROOMS • INTERIORS

WHOLE HOUSE DESIGN & SOLUTIONS



FG COLLIER LTD 29-35 EDWARD STREET WESTBURY WILTSHIRE BA13 3BL
TEL 01373 822227 EMAIL [INFO@FGCOLLIER.COM](mailto:info@fgcollier.com) WEB FGCOLLIER.COM