

The Bridge

January 2016

*monthly magazine for the villages
of Corsley and Chapmanslade*

HAPPY
NEW
YEAR
2016

Wishing all our readers a very happy and prosperous New Year!

Castle Care Wessex

Because your home is your castle



CARE IN YOUR OWN HOME

We are a mother and daughter team running a professional, friendly agency specialising in:

24 hour live-in care

Helping loved ones stay in their own home, maintaining their independence.

Domiciliary Care

For short periods of time, perfect for clients who enjoy their independence but appreciate a helping hand.

For more information telephone 01373 836767

email: castlecarewessex@btconnect.com

www.castlecarewessex.com



Frome Heating Specialists

M A Knight

01373 832578

Heating and plumbing engineers specialising in:

Solar heating

Oil and gas boiler servicing

Boiler replacement

Energy management

Pressurised hot water systems

Underfloor heating systems



199876



Family business established 1964

Stavanger, Corsley, Nr Warminster, Wiltshire, BA12 7QL

The Bridge

monthly magazine for the villages of Corsley and Chapmanslade

Articles

Please submit articles either by email to viv.thomas146@btinternet.com or by hand (legible handwriting please!) and take them to the drop-off locations at Barbers Plant Centre, Chapmanslade, or Acres Supply Garden Centre, Corsley by the deadline.

News, reports, updates, thank you's, etc, from individuals or local organisations are free – the more the merrier – keep 'em coming!

File types

Save your files as .doc – please don't send .docx files – I can't always open them successfully.

Advertising

Small ads are £1 for each item whether 'For Sale' or 'Wanted'.

Events/local organisation ads (churches, clubs, playgroups, etc) are £2 per month for a boxed advert.

Full page ads cost £7.50, are subject to space availability and cannot be guaranteed,

If you are advertising, don't forget to take the fee – cash or cheque in a sealed envelope please, to either of the drop-off points (Barbers Plant Centre or Acres Supply).

Please note: no cash, no advert!

Trade advertising

Please see information on the last page.

In this issue...

- 7 Biology: changing the world**
gene genie
- 10 Bob's Bafflers**
a cunning quiz
- 18 Parish Council briefing**
Chapmanslade
- Festival Choir 21**
a minor problem
- Three Open Doors 23**
news from the pews
- Corsley WI 28**
news from the ladies
- 33 News from the Nest**
fledgling fun
- 35 Parish Council briefing**
Corsley
- 41 Whitbourne Chapel**
chapel colloquy

Deadline

**Deadline for articles
or adverts for the next
issue of The Bridge is
4pm 19th January**

**Please note that no
items will be accepted
after this date**

January

Saturday 3rd

Corsley litter pick – 10 am, meet opposite the Royal Oak

Monday 4th

Corsley Festival Choir rehearsals resume - 7.15pm St Margaret's Church, Corsley

Wednesday 6th

Warminster mobile library

Thursday 7th

Warminster Area Board – 7 pm, Warminster Civic Centre

Thursday 14th

Chapmanslade Parish Council – 7.30 pm, Chapmanslade School

Thursday 14th

Corsley WI – OPEN Meeting - 'Looking at the Stars' – 7.30 pm, Corsley Reading Room

Wednesday 20th

Warminster mobile library

IT for silver surfers – 10 am - 12 noon, Corsley Reading Room

Thursday 21st

Church and Community Coffee Morning – 10 am – noon, Three Horseshoes
Chapmanslade

Cinema Corsley - Suffragette – 7 for 7.30pm, Corsley Reading Room

Monday 25th

Community Fuel deadline for February deliveries

Wednesday 27th

Lite Bites Soup Lunch – 12.30 - 1.30 pm, Corsley Reading Rooms

Thursday 28th

Parochial Church Council

Sunday 31st

Deadline for bids for donations or grants to Corsley Parish Council Clerk



please note new date!



February

Wednesday 3rd

Warminster mobile library

Diary Dates

Thursday 11th

Corsley WI – OPEN Meeting and afternoon tea - 'Barefoot at Buckingham Palace' – 2.30 pm, Corsley Reading Room

Chapmanslade Parish Council – 7.30 pm, Chapmanslade School

Wednesday 17th

Warminster mobile library

Thursday 18th

Church and Community Coffee Morning – 10 am – noon, Three Horseshoes Chapmanslade

Cinema Corsley - The Martian – 7 for 7.30pm, Corsley Reading Room

Wednesday 24th

Lite Bites Soup Lunch – 12.30, Corsley Reading Rooms

March

Wednesday 2nd

Warminster mobile library

Thursday 3rd

Warminster Area Board – 7 pm, Warminster Civic Centre

Monday 7th

Corsley's Annual Parish Meeting – 6.30 pm, Corsley Reading Room

Thursday 10th

Corsley WI – Annual Meeting – 2.30 pm, Corsley Reading Room

Friday 11th

Chapmanslade Parish Council – 7.30 pm, Chapmanslade School

Wednesday 16th

Warminster mobile library

Thursday 17th

Church and Community Coffee Morning – 10 am – noon, Three Horseshoes Chapmanslade

Cinema Corsley - The Lady in the Van – 7 for 7.30pm, Corsley Reading Room

Saturday 19th

'All Things Animal' (inc companion dog show) – 10 am - 4 pm, Rye Hill Barn, Longbridge Deverill

continued...

Bin collections for January Corsley

Green bin

Wednesday 13th January

Blue bin

Monday 4th January

Black recycling box

Friday 8th January

Black bin

Saturday 9th January

Chapmanslade

Green bin

Wednesday 13th January

Blue bin

Wednesday 13th January

Black recycling box

Saturday 9th January

Black bin

Thursday 7th January

At the time of publishing, Wiltshire Council were not able to supply further dates for the bin collections for January.

Please check the collection dates online at www.wiltshire.gov.uk/rubbish-collection-days

Corsley litter pickers

We meet opposite the Royal Oak at 10am on the first Saturday of each month. Our next 'pick' is on Saturday 3rd January – do come along and help keep our village beautiful.

Cath Aylesbury and Sue Taylor

Corsley Reading Room

Outlook for 2016

After 11 years of looking after the Reading Room, Dick Collins (Chairman) and his wife Rosemary (Treasurer and Letting Officer) have stood down from the Committee as they are to move to Essex.

At our Annual General Meeting in November we thanked them very much for all their hard work and a new committee was elected as follows:-

Chairman - Hugh Deed

Treasurer - Vanessa Hyde

Letting Officer - Gill Parkinson

Assistant Letting Officer - Jenny Rutty

Secretary - Jenny Rutty

David Carruthers

Michael Clarke

Kim Fyffe

Liz Garrett

Jackie Jasper

Sue Kerfoot

Pat Mizen

Hugh Deed is building us a new website to be launched early in 2016. Other plans include monthly Cinema Corsley movie nights and you will find details of these elsewhere in the Bridge. We do hope you will come along to support this new venture.

*Jenny Rutty
Reading Room Secretary*



Pears Electricians

Nigel Charteris - BSc (Hons) M.I.E.T.



Professional Local Electrician

A HIGH STANDARD OF WORK AT REASONABLE RATES

Part P registered with www.napit.org.uk - Testimonials and references available

Faults & Troubleshooting • Repairs & Improvements
Installation Condition Reports • Boiler Wiring

www.pearselectrical.co.uk

01985 213314 or 07717 534026



OAKLEY

GARDEN MACHINERY

Grove Lane, Marston Trading Estate
 Frome, BA11 4AT

Hayter
 Mountfield
 Lawn King
 Westwood
 Stihl
 Honda
 Toro
 Echo
 Husqvarna
 Shindalwa
 Oregon
 and more...



**For Sales, Spares,
 Workshop Service
 and Repairs**

www.oakleyfrome.co.uk

01373 467712

Precious Paws Grooming Studio



Luxurious mobile grooming
 service for cats and dogs

Grooming, Bathing, Handstripping, Clipping
 and Microchipping *City & Guilds Qualified*

Contact Alison on

07887 721418 or 01985 510115

Bride by Design

Bridal Gowns & Accessories



2 Silver Street
 Warminster
 BA12 8PS

01985 217216

Please contact us to arrange an appointment
www.bridebydesign.biz

STUNNING COASTAL VIEWS ON CORNISH COAST NEAR LOOE



Six bedrooms (sleeps 12)
 Private access onto beach
 Pets allowed

Top class facilities including wi-fi
 Rent for week or even long weekend
 Downstairs bedroom and shower room

For more info: Sandy Parrish 01373 832522

McCulloch
FURNITURE



Kitchens • Bedrooms • Bathrooms • Libraries
Studies • Media furniture • Offices • Freestanding

The Workshop, Bruton Lane, Upton Noble, Somerset, BA4 6AH
Telephone 01749 850000 Fax 01749 850055 Mobile 07887 892633
enquiries@McCullochfurniture.co.uk
www.McCullochfurniture.co.uk

ORCHARD UPHOLSTERY

RE-UPHOLSTERY OF
ANTIQUE AND MODERN
FURNITURE

❖ FREE ESTIMATES ❖

COLLECTION AND
DELIVERY SERVICE

Telephone Lesley
01373 464870

Sharon's Foot Clinic

SAC Dip FHPT SAC Dip FHPP



Fully insured and highly trained

For the professional treatment of:
Corns • Callus • Cracked Heels
Athletes Foot • Fungal Infections
Thickened Nails • In-growing Nails
Diabetic Foot Care • Verrucas
Nail Cutting • Nail Reconstruction

Contact Sharon on
01373 836734 or 07728 200402

Clinic appointments at
12 Sunny Hill, Nunney, BA11 4ND

Home visits also available

Biology: changing the world

Gene editing

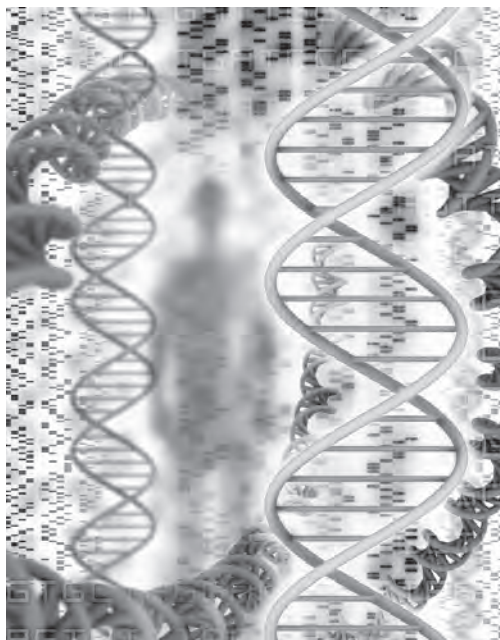
The end of disease or the beginning of designer babies?

Gene editing is a new technique which can make very precise changes to DNA and can be used to change the function of a single gene. So, its use might repair genetic defects or change the genetic properties of an individual. Such is the concern about the applications of gene editing that the national science academies of the UK, USA and China recently organised a meeting to debate the issues of using this technique in humans.

The debate centred on the medical use of gene editing, which could cure some genetic diseases, such as Huntington's disease, a neurodegenerative condition in which symptoms typically appear in middle age, or Cystic Fibrosis, a disease in which the lungs become congested and are particularly prone to infection, and which affects infants and shortens life expectancy. In both cases it is a single gene that is functioning incorrectly. If this single gene can be 'repaired' to act like the normal gene, the disease would not occur.

There were two particular concerns about the use of gene editing in humans. One is that an individual could be changed in a way that is inherited by their offspring. Another arises from the prospect of using gene editing to create children with particular characteristics ('designer babies').

The meeting of the science academies agreed that it would be irresponsible



to change cells which contribute to the making of the next generation – germline cells (sperm and egg cells) and embryos. However, it would be ethical to modify cells which do not contribute to inheritance. So, for example, a leukaemia patient's blood-producing cells could be taken from bone marrow, changed to be non-leukaemic and reintroduced, thereby curing the disease. Treatment of Huntington's disease and Cystic Fibrosis would require the germline to be changed and therefore are not currently recommended. Laboratory work on human cells which will not grow to form an embryo is permissible and will enable scientists to understand more about how cells work.

So, what is the future of gene editing? Will designer babies become a possibility in time? Yes, insofar as it would be possible to eliminate a disease by changing a single gene, such as Huntington's disease. But

gene editing being used for hair colour, eye colour, height or other complex properties is highly unlikely because these are the properties of the interplay of a large number of different genes.

This is a remarkable new technique that scientists have discovered, and discoveries cannot be unmade. Now societies throughout the world, not just scientists, must discuss whether and how to apply gene editing.

Professor Nigel L Brown OBE FRSE FRSC FRSB
Emeritus Professor of Molecular
Microbiology, The University of Edinburgh
Chair, The Genome Analysis Centre

Nigel now lives in Chapmanslade and is
happy to receive comments and questions
at nigelbrown48@gmail.com

Cheaper heating oil bills

Wiltshire's Community First is part of a Rural Community Council oil-buying syndicate across the whole of England: the Community First (CF) oil-buying scheme offers a way to keep heating costs down.

Anyone interested in joining the Corsley section of the Wiltshire CF oil-buying scheme can contact me. There is an annual membership fee of £20 but there are significant savings on central heating oil bills.

Once a month, members are contacted by the village organiser. Ordering deadline for February deliveries is Monday 25th January. CF negotiators then obtain the best possible price. Members pay the oil supplier directly.

For more information, contact Wiltshire's Oil Administrator, Jess Emery

t. 01380 732809

e. oil@communityfirst.org.uk

w. www.communityfirst.org.uk (click on community oil buying scheme).

CF oil cost in December was **28.45 pence**
per litre + 5% VAT.

Jenny Ratty
55 Dertford, Corsley, BA12 7NR
t. 01373 832418 e. jatty@aol.com

Corsley Tennis Club News

The Club held its annual Presentation Evening at the Royal Oak and before an excellent meal the President, Charlotte Beswick, and Chair, Isabel Lewis, presented the trophies:

Men's Singles	Brian Young
Ladies' Singles	Jane Snedden
Men's Doubles	Brian Young and Andy Howson
Ladies' Doubles	Jane Snedden and Sonia Glenn
Mixed Doubles	Brian Young and Ann Walker

Alison Plummer (Captain of the Ladies A team) was presented with a special award – the Chippenham and District League Representative of the Year. John Dilena was commended for his work with the juniors.

The quiz was won by Andy Howson and his team. The evening was masterminded by Brenda Levitt and the raffle was conducted with her usual verve by Brenda Hughes.

Cake Monster

The show will go on!

Corsley Show

The word may not yet have got around, but I am delighted to report that Corsley Show 2015 was a success

We made a profit, albeit small, but nevertheless one which puts us on the same starting line for 2016 that we were at the beginning of last year. To quote the old cliché “the Show must go on”, or in our case the Show definitely will go on.

The success of 2015, in the face of the third dreadfully wet Show day in four years, is down to everyone who took part. The list is long. The most important single factor was the number of people who ignored the weather and came to the Show. They were unfailingly cheerful throughout some pretty abominable conditions. Next were the stalwarts and trojans of the band of stewards, the Chapmanslade PTA car parking team, and every other able-bodied person who was press ganged into service in the mud, not only pushing the cars out at the end, but also pushing them in, not to mention the legions of gate-manners, many of whom stood out in the rain for more time than was healthy. Loyalty has no boundaries. It has been suggested that we feature mud wrestling next year as a local sport! I must also mention the Horse and Pony Show which has risen like the phoenix with a new and enthusiastic organising committee.

There were two fundamental aims in the development of last year's Show. First, to construct a new, leaner, less risky financial basis and this was achieved in

a variety of areas, not least of which was to obtain a grant from the Warminster Community Area of the County Council to buy two tents and some tables, the latter shared with the Elizabethan Evening Committee. We plan to make this equipment available for hire to the village in 2016 and this policy or reducing our hire costs will be continued where feasible for the 2016 Show. Second was the aim to try and return the Show to its roots as more of a village show. In the main arena the acts centred on the children's sports, 'roll, dash and bash' and the tug o' war all competed between local teams and individuals. The Horticultural and Crafts marquee is always a magnificent centre-piece for village talents and a haven in bad weather. Elsewhere we had local groups providing music, dancing, crafts and country sports. This general theme will be pursued this year.

Last year's Committee were tireless in their efforts to generate new ideas to increase the attraction of the Show and to find ways to lessen the financial risk. There will be some changes in the Committee for 2016 in that Colin Carey and Simon Jasper are both handing over their responsibilities, Colin to Treeve Moss and Simon to Jim Wheeler. Both are very welcome and have already been helping the Show for some years. Very sadly, Wendy Miller passed away last year,

continued on page 10

Bob's bafflers

- 1 Dennis the Menace featured in which British children's comic?
- 2 What is a funambulist?
- 3 Which television and radio quiz show for schools ran from 1948 to 1986?
- 4 What does MDF stand for (as in the engineered wood product)?
- 5 In English, what do the initials of the car manufacturer BMW stand for?
- 6 What is Harry Ramsden's famous for?
- 7 Who is Ruth Langford's husband?
- 8 As of 2015, what is American Bill de Blasio's job?
- 9 Coulrophobia is the fear of what type of entertainers?
- 10 What word is the exact opposite of nocturnal?
- 11 As of 2015, what is the minimum age you have to be to open a Facebook account?
- 12 Name the metabolic process that converts sugar to acids or alcohol

Answers on page 48

after a long struggle with illness. She ran the excellent Dog Show for many years and her husband, Keith and the Miller family have very kindly agreed to carry on with the Dog Show.

We are always looking for more help with the Show, but this year particularly need someone to take on the Health & Safety responsibility. It does not require specialist knowledge and Simon would be able to hand over a very well-ordered process. If anyone is willing, please contact me. This will be my last year with the Show Committee and I am grateful for the tremendous support I have had from all quarters during my time. The Show thrives through new minds coming to bear on its shape and organisation and I am sure that whoever takes over will sustain its long history. It would be just be great to have one more sunny year!

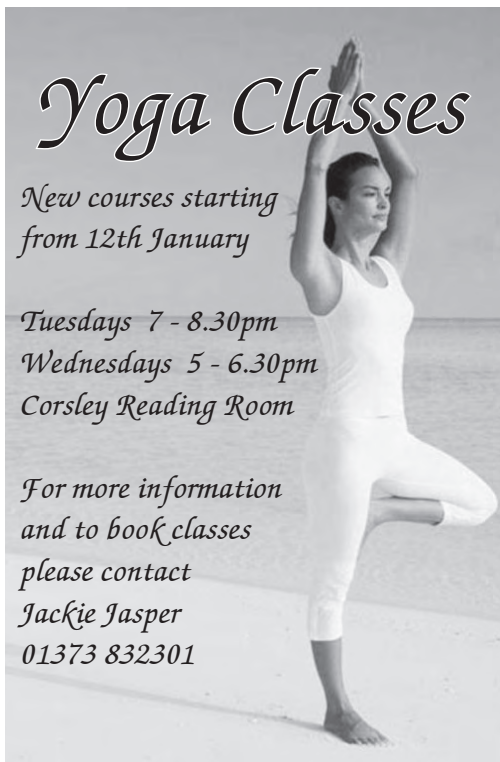
Neil Briteen
01373 832515

Yoga Classes

*New courses starting
from 12th January*

*Tuesdays 7 - 8.30pm
Wednesdays 5 - 6.30pm
Corsley Reading Room*

*For more information
and to book classes
please contact
Jackie Jasper
01373 832301*



UPVC REPAIRS WILTSHIRE.CO.UK

FOR PROFESSIONAL WINDOW & DOOR REPAIRS

Are you having a problem with your UPVC windows or doors?

- ✓ Misted glass
- ✓ Broken or faulty window hinges
- ✓ Faulty locks
- ✓ Jammed windows or doors
- ✓ UPVC door adjustments
- ✓ Window and door handles

Call us – we are here to help

All work guaranteed

01373 430010 07795 143228 www.upvcrepairswiltshire.co.uk

the three horseshoes

The pub Chapmanslade deserves

Open daily from 10am-11pm serving delicious home cooked food (12-3pm & 6-10pm Mon - Sat. All day Sun.) Enjoy a refreshing drink in our beer garden with spectacular views of Longleat and Cley Hill or indulge with one of our regular meals deals by the warm, open fire on a bitter winter's day. We organise monthly events featuring live music, comedy and much more!

Call us on 01373 832 211

Follow us on Facebook for more details.



threehorseshoeschapmanslade



Clare Merritt

Quality re-upholstery and loose covers

Curtain make up

Roman blinds made to measure

Fabrics, curtain poles, etc

01373 464993

Established 1973

Piano Tuition

All standards welcome

Debbie Rickhuss LLCM BEd

Teacher Pianoforte and Theory

reasonable rates ~ 01373 832829



**Shake off those pounds and
dance yourself fit.**

Chapmanslade Village Hall
Monday 7.30pm - 8.30pm

Longbridge Deverill Village Hall
Thursday 7pm - 8pm

For all levels of fitness and
NO experience needed.

For more information please contact
Amy 07830 119032

Busy Bees Pre-School Chapmanslade



For children aged 2-5 years
Monday, Wednesday, Thursday and Friday
8am - 5pm; Tuesday 8am - 3.30pm

Please contact Kelly Williams to arrange a
visit and a free trial session for your child
Breakfast club and after-school club available.

Term time only

Telephone 07749 257608
busybeespre-school@hotmail.co.uk

FENCING



Garden Fence Company
Garden fencing supplied and erected

- Repairs to existing fences
- Old fencing removed from site
- Hedges cut
- Small trees felled

For a friendly, cost effective and reliable
service contact Gerald Gascoigne on:

07506 373335, 01373 832613
info@wessexgardenfencing.co.uk
www.wessexgardenfencing.co.uk

For your
Heating Oil Supplies
contact

KINCH FUELS

at their
local depot in
Devizes, Wiltshire

Telephone 01380 727102

*The company you and
your home will warm to*



LUXURY PRIVATE CAR HIRE

A locally based, door-to-door, personal
service for up to six passengers in
air conditioned comfort

AIRPORTS • SEAPORTS • ANYWHERE

For bookings, please call
01985 840088 07903 307734

WEST COUNTRY SWEEP

Domestic & Commercial Chimney Services

Andrew Leigh

07545 822109
westcountrysweep@gmail.com



Cross Keys bid to become a Community Asset

Parish Council input

On 8th December Wiltshire Economic and Planning Department gave notice that the bid by the Corsley War Memorial Playing Field Committee (CWMPF) to register the Cross Keys pub as a Community Asset had been turned down.

The letter from Wiltshire Council is published on page 15 of this edition of The Bridge. The Parish Council was invited to comment on the bid, and did so after debate at their meeting on the 26th October. As agreed at the meeting, comments were drafted by myself for consideration by PC members and circulated to the whole Council and Clerk on Monday 9th November, with a request for feedback by the following day. None were received and the comments were forwarded to the Council, with a copy to Neil Carpenter and Marion Licquorice as Chairman and Secretary of the CWMPF. The comments supported the bid, but with some reservations, and added village context. For information, and in the interests of openness and balance, the complete text of the comments is published below.

Cross Keys Community Asset Bid – Parish Council comments

Reference: Corsley War Memorial Playing Field Committee nomination of Cross Keys Public House as an 'Asset of Community Value'

1. There are three public houses in Corsley; the Royal Oak, White Hart and Cross Keys. The first two are Longleat owned, the Cross Keys is owned by Wadworth's Brewery. The Royal Oak is let to Wadworth's and sub-let to its tenant. The Royal Oak has recently

been taken on by a new tenant and is successfully providing similar functions and services to the village as the Cross Keys. The White Hart has been closed for about 18 months for refurbishment and is due to re-open in the next two/three months, reportedly to provide mainly restaurant services. It has been let directly to the current tenants. *(From information directly obtained from the White Hart tenant and Longleat, the Community Asset bid is incorrect in its assertion that the White Hart has been "permanently closed")*

2. All three of the pubs in Corsley have had varied fortunes in recent years, very much competing for the same 'turf' and their commercial success has reflected national trends. The popularity of the Cross Keys has followed these trends and has had half a dozen or more tenants in recent times. Right now, it has a loyal following of local customers in the bar and the PC would support a view that it is one of the focal points of Corsley village life.

3. It is some years since Corsley boasted a shop and the Post Office closed some years ago. There has been no clamour for either of these institutions to be reinstated. Corsley Reading Rooms are effectively the village hall and have developed over the last ten years, under vigorous and imaginative management, to be the major centre of village social and administrative and other



For Expert Tree Care

Telephone Jon Burgess on
01985 214320

Skilled pruning
Tree felling
Stump removal
Qualified and insured

**Free tree health
survey and quotes**

Keep active with physiotherapy

Alison Rossiter MCSP HPC

Chartered Physiotherapist

30 years experience in physiotherapy specialising in the treatment of muscle and joint problems. Helping people to improve their health and fitness through treatment, exercise and advice.

Home visits can be arranged.

Daytime and evening appointments available.

If you need help please contact:

Beckington Physiotherapy 01373 831483

Email: arossiterphysio@gmail.com

www.beckingtonphysio.co.uk

DAVID EDMUNDS & CO
ACCOUNTANTS & TAX CONSULTANTS

Specialists in the self-employed, small and medium business and self assessment. Preparation of accounts, VAT, PAYE, income tax and corporation tax returns.

*Personal, friendly service
Evening appointments by arrangement*

Telephone 01225 334447

Home 01373 832430



**Specialist installers of Macadam
Sports Surfaces with laser technology**

- Tennis courts
- Playgrounds
- Multi-use games areas
- Football, hockey & cricket pitches
- Synthetic grass

7 Whitworth Road
Marston Trading Estate
Frome, BA11 4BY

t. 0845 2416115
m. 07767 401270

colinb@thornburysports.co.uk
www.thornburysports.co.uk

Kevin O'Mahony
Quality Painter and Decorator

Internal and external painting
Artexing
Wallpapering
Coving
Hand painted kitchen units

07724 349447 or 01985 301197
email kevo7743@googlemail.com
www.thewarminsterpainter.co.uk

activities. A recent attempt to develop the Corsley old primary school as an additional function and educational centre in the village failed after a very brief period and it has now been purchased as a residence, the planning authority accepting the case that failure to operate as a business was sufficient justification for change of use of this building.

4. There are some 550 people on the Corsley Electoral, served by two pubs (the third reportedly to re-open shortly), the Reading Rooms, three Churches, the Corsley War Memorial Playing Field (CWMPF) and pavilion, and various clubs and societies (cricket, tennis, WI, Festival Choir, Elizabethan Evening, skittles, etc). The Reading Room and pubs put on their own social programmes. There are other pubs within easy distance of Corsley and a large village hall in Corsley's sister village, Chapmanslade

5. To date, some 100 or so individuals have signed a petition for the Cross Keys to become "... a centre of the community, owned and run for the community.." Whilst the PC would applaud the sentiments and efforts of those involved, this is a very challenging and ambitious project. As a pub, it would continue to be in competition with other local thriving establishments and if it expanded its services, one which could detract from the success of other village institutions. The case for it becoming a Community Asset and taking on roles outside that of a public house, which it performs now, does not identify unique unfulfilled requirements in the village.

6. However, competition is generally healthy and, if at the very least, the bidding group were able successfully to run the Cross Keys as a pub, this would preserve a long-established and well-liked village social hub and on that basis the PC would support the bid.

11th November 2015

Decision not to list The Cross Keys public house, Lye's Green, Corsley, as an Asset of Community Value

Having considered all the information and submissions provided, following the nomination of The Cross Keys Public House to be listed as an Asset of Community Value, Wiltshire Council has decided not to enter the property onto the list of Assets of Community Value.

The asset has been entered into a list of unsuccessful nominations, maintained online at www.wiltshire.gov.uk/planninganddevelopment/planningcommunityrighttobid.htm#relateddocuments.

This decision has been taken because there is a public house, The Royal Oak, approximately half a mile from The Cross Keys, which although closed for months within the last year, is currently operational and offers similar facilities to The Cross Keys. It is therefore NOT considered that the current use of the building or other land (or use of the building or other land in the recent past), that is not an ancillary use, furthers the social wellbeing or social interests of the local community and it is not realistic to think that now or in the next five years there could continue to be non-ancillary use of the building or other land which will further (whether or not in the same way as before) the social wellbeing or social interests of the local community.

*Simon Day
Area Technical Support Team Leader
Economic Development & Planning
Wiltshire Council*

ALLSOP CARPETS & FLOORING

DOMESTIC ♦ COMMERCIAL ♦ INDUSTRIAL

Christchurch Street West, Frome BA11 1EB

TEL: 01373 463866 MOBILE: 07887 953014

www.allsopcarpets.co.uk

Chapmanslade Village Hall

Can be hired for all your functions:
parties, weddings, meetings, classes, etc

For hiring information, phone

Ken Davies 01373 832034 or email
chapmansladehall@blueyonder.co.uk

KEYVOLUTION

Locksmith and
Carpentry Services
serving the Wiltshire Area

Warminster based company offering locksmith and carpentry.
Police cleared, reliable and honest service.

Any other quote beaten.

- BS3621 lock upgrades for house insurance approval
- Garage doors, locks and running gear
- Lock repairs – specialising in Chubb mortice locks
- Upvc double-glazed door and window locks fitted – even old ones!
- Door or window locks opened destructively or non-destructively (indemnity required for these services)
- Digital code locks supplied and fitted
- All types of carpentry work – mostly 2nd fix and maintenance

Check out my website

www.keyvolution.co.uk



or call Ben on 07748 214799 or 01985 219799

White Horse Windows

Windows, Doors, Conservatories and
more...

Local Company, Exceptional Standards
10 year guarantee

Windows Fascia & Guttering
Doors Conservatories

CERTASS Registered

For a Free Quotation call Ryan on
07909 441442 or 01373 302594



TOENAIL CUTTING

IN YOUR OWN HOME

ALICE LEWIS

01373 228010



Enjoy a Beautiful Lawn this summer...

You can have a beautiful,
lush and weed free lawn.

Lawn Envy can revive your lawn
this summer with their tailor-made
treatment programme. Make your
lawn the envy of your neighbours.

For your FREE lawn assessment call

01985 221107 or visit

www.lawnenvy.net

Lawn Envy
Where the grass is always greener

Call 01985 221 107
or visit www.lawnenvy.net

SomerSet

SURFACING

Division of
Thornbury Sports

For Roads, Footpaths, Driveways, Car Parks

- Macadam surfacing
- Block paving
- Resin bonded surfacing
- Coloured Macadams

7 Whitworth Road
Marston Trading Estate
Frome, BA11 4BY

t. 0845 2416115
m. 07767 401270

colinb@thornburysports.co.uk
www.thornburysports.co.uk

BARTERS PLANT CENTRE

'Passionate about Plants'

Shrubs ♦ Perennials ♦ Trees ♦ Roses ♦ Conifers
Climbers ♦ Fruit Trees ♦ Hedging ♦ Soft Fruit ♦ Seeds
Bulbs ♦ Basket Plants ♦ Bedding ♦ Vegetable Plants
Christmas Trees ♦ Holly Wreaths
National Garden Gift Tokens



Opening Hours

Mon to Sat	9 - 5	(March to October)
Mon to Sat	9 - 4.30	(November to February)
Sun	10 - 4	(March to June + December)

Just off A36 in Chapmanslade, Wilts, BA13 4AL
01373 832694 www.barters.co.uk



JONATHAN CORP

Painter and Decorator
General House Maintenance
Sturford Mead Farm, Corsley
Warminster, Wiltshire, BA12 7QU
01373 832213

Postlebury News R Gould – Newsagent

All papers and magazines
Home delivery service

01749 850556 07979 452677

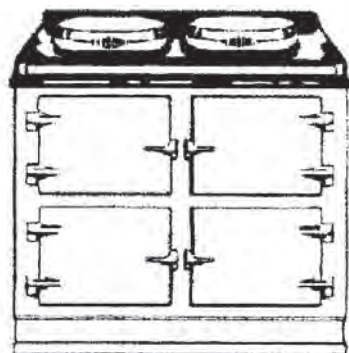


T A P Services

Telephone/Fax 01373 463106

www.tapservices.co.uk

Authorised Stanley Service Agent



Range Cooker Servicing

Chapmanslade Parish Council

Parish Council Briefing

Phil Jefferson reports on the parish council's activities in December

There was no parish council meeting in December owing to a lack of business. Quite a surprise bearing in mind the many busy meetings we have had over the last two or three years!

Our next scheduled meeting is due to be held on Thursday 14th January, 7.30 pm at the school. You are most welcome to come along to speak or to listen. If you are not on my circulation list to receive a copy of the agenda and would like to receive them in future, please drop me an email.

Phil Holihead has been co-opted on to the council to fill the vacancy caused by Jill Willmot's resignation and is looking forward to his new role.

I attended the Warminster Rural Neighbourhood Tasking Group meeting on 9th December. This is a forum for community police officers and neighbourhood watch coordinators from each of the parishes to agree policing priorities for the coming months. The current priorities are road safety outside schools (Crockerton, Horningsham and Sutton Veny as well as ours) and burglaries. Our group set up to review road safety outside Chapmanslade School will be meeting shortly and we will be reporting back in due course. In recent months there has been an increase in both dwelling and non-dwelling

burglaries in the area and Chapmanslade has had its share of these.

We are still looking for a volunteer to be our neighbourhood watch coordinator. It's an important but not a particularly time-consuming task so if you would like to volunteer please get in touch. And please, everyone, do remember to be vigilant about the security of your home and your property, (some of you will know why I say this with feeling!). Don't forget, too, that sheds and cars can be at risk. Last month someone broke into a car parked in the High Street and stole a handbag which was on display on the passenger seat. There are lessons that we can all learn! Finally, do tell your immediate neighbours if you are going on holiday as well as offering to keep an eye on their property when they do the same.

Wiltshire Police has just issued its annual report on the Community Speedwatch initiative. Our scheme is one of 103 which operate throughout the county. In the twelve months to August 2014, speedwatch volunteers reported 20,077 motorists for speeding. Each of these motorists will have received a letter from the police advising them of the dangers of speeding. In the case of 3,017 drivers, who were reported for 'excessive speeding', hopefully they will have received a home visit from a community police officer. The police maintain that the

efforts of the many Speedwatch volunteers, including out team members, has resulted in a reduction in the average speed of traffic through the towns and villages participating in the scheme.

We normally carry out up to ten Speedwatch sessions a month, at the beginning and end of the school day. In the three or four years we have been carrying out these checks we have noticed a marked increase in the amount vehicles passing through the High Street. It is not unusual now for 450 or more to pass through in sixty minutes. We are not allowed to keep a record of the information we send to the police each time we carry out a check

but anecdotally we would say that here in Chapmanslade it is still an uphill battle. Hopefully one day we will have persuaded all the motorists who use our High Street that driving at more than 30 mph is both dangerous and anti-social.

On behalf of my fellow councillors, please accept my very best wishes for a peaceful and prosperous 2016. The parish council will continue to try its very best to act in your best interests in all our discussions and the decisions we take.

Phil Jefferson
832845

phil.jefferson@virgin.net

www.chapmanslade.org.uk

Corsley Parish Council

Bids for donations and grants for 2015/2016

Each year the Parish Council provides donation or grants to a variety of community and village organisations. In recent years these have included:

- Corsley Reading Rooms
- War Memorial Playing Field
- The Lane End telephone box project
- Corsley and Chapmanslade Parochial Church Council
- Corsley Baptist Church
- The Bridge
- Corsley Show
- The village defibrillator

The Parish Council budgets on spending a total of around £3,500, mostly your taxes, in areas such as community groups, sports and recreation, open spaces, entertainment, local issues and educational purposes for Corsley children (ages 5-11).

Donations and grants will be made on the basis of bids to help us spend this (your) money in appropriate areas. These should be by application to our Parish Clerk (he can provide the relevant forms) and include financial accounts where appropriate. Bids for defined projects are preferred, but this will not exclusion others.

Bids should reach John Willcox by email by Sunday 31st January 2016 to
corsleypc_jdw@aol.co.uk 01373 832171



Clean-it

Recommended by



Carpet and upholstery cleaning specialist

01373 462059 07779 247961 www.clean-it.biz

Home ~ Private ~ Lettings

Garston Veterinary Group



Time for a New Years Resolution ?
We are offering **FREE Weight Management**
Clinics to all dog and cats.

It is a fact that obesity
can decrease an
animal's life span and
lead to many other
health conditions.

Quick check is your pet:

- Lethargic
- Panting more frequently
- Poor skin/coat condition
- Reluctant to exercise
- Suffering from constipation or flatulence

**25% off Weight Management diets during
January and February for all of our clients.**

**Further 20% off for
Wellness Plan clients**

Please contact your Garston Surgery for more information

Frome	Trowbridge	Warminster	Westbury
01373 452225	01225 754021	01985 213350	01373 301448



www.garstonvets.co.uk



Domestic Appliance Spares and Repair Service

Domesticare

Mike, David and Sue Wye
21 Keyford, Frome

01373 467351

Professional Childcare

Qualified, approved and registered.

A tailor-made, personal service.

Local and surrounding areas.

Call 07883 025476

denise.m.rawlings@mypostoffice.co.uk

JERRY RAYNER : boiler maintenance

01985 841461 or 07775 755981

**FOR SERVICING AND BREAKDOWN
OF OIL BOILERS
also AGA and RAYBURN**

- Competitive rates
- Friendly, helpful and efficient
- Call now for a quote



STONE & BRICKWORK SPECIALISTS

Tel: 07970 513233
Email: terry@rocketmasonry.co.uk
www.rocketmasonry.co.uk



LONGLEAT

Longleat Forestry

For all your timber needs, including:

- Firewood logs • Woodchip
- Mulch • Rustic poles • Coal
- Kindling • Saw logs • Hardwood
- Softwood • Christmas trees

Tel: **01985 213507**

Email: forestry@longleat.co.uk

Web: longleat.co.uk/about/forestry

Picket Post, Warminster, BA12 7JS

Think you can't sing? Think again!

Are you someone who sings along to the radio when hearing your favourite tune? Are you a secret Pavarotti singing 'Nessum Dorma' in the shower when no one is listening? If so then we would love to see you at Corsley Festival Choir!

Corsley Choir has been through difficult times this year because we are not seeing new people joining us as the older members retire. This is not a problem solely of our choir – it is a problem affecting all choirs from the great Welsh Male Voice Choirs down to the humble local community choirs. It is perhaps a sad reflection on the very busy lives that working people now have to lead, with the pressures of family and work taking up most of our lives.

I find a 'good sing' every week is a huge stress reliever, and the thrill of singing with the choir, an orchestra and soloists in the fabulous church at our concerts is just awesome! The most important attribute to singing in a choir is being able to listen to and tune in to other voices – everyone's voice should blend and meld together in each of the four parts, so no one singer is heard above the others. New choir members are not expected to sing solo!

I have found there are two main challenges to choral singing – one is the physical act, learning to support your voice properly and breathing correctly. The more you sing the stronger your voice gets – as with any other physical activity. The second challenge is what I think of as the mental aspect that is part of singing - singing your part without being distracted by the other three parts and understanding the way the choir leader wants to interpret it! We are privileged to

have the benefit of a hugely experienced choir master, Stephen Smith, and a great accompanist at the keyboard in Liz Koslowski. Between them they expertly teach and guide the choir through the difficulties put forward by each new musical piece we attempt.

So why not give it a try? Please come along to Corsley's St Margaret's Church on Monday 4th January at 7.30 pm, we'll have some wine and snacks and a chance to have a chat before we start singing. Rehearsals are every Monday evening at 7.45 pm until 9.15 pm, but if you can't attend every one it's not a problem. We will give you a warm welcome and I hope you will find it a rewarding and hugely enjoyable experience!

Peter Bennett
Corsley Festival Choir Tenor

**Our next concert will be
'A Royal Celebration'
on Sunday 8th May to honour the
Queen's 90th birthday.**

For more information, please contact Jenny Rutter on 01373 832418.

Darrin Lovatt

Clock Repairs and Restoration

- All aspects of restoration, repair, service and complete overhaul undertaken.
- All clocks – bracket, French, carriage, dial and Westminster chime.
- Antique clock specialist with 25 years' experience.
- Helpful, professional advice – all work fully guaranteed.
- Specialist collection and set-up service.

t. 01373 474923 m. 07444865817

e. darrinlovattclocks@yahoo.co.uk

PAINT AND PASTE

Quality with reliability always

Martin Bendle
Painter and Decorator



For FREE estimates
07741 492617

email martin.paintandpaste@gmail.com
www.paintandpaste.co.uk

Cross Keys

Lyes Green, Corsley

*Home-cooked food
12 - 2.30pm and 6 - 9pm*

*Open all day on Sundays
food served 12 - 8pm*

Function room and large beer garden



01373 832406

www.facebook.com/CrossKeysInnCorsley

Corsley Tennis Club



New members welcome –
all ages, all abilities

Three hard courts available all year

Weekly junior coaching available

Low subscriptions

Contact either

Isabel Lewis 01373 832770 or

Rebecca Bennett 07974 796468

www.corsley-tennis.uk



Little Cuckoo's Pre-School

Lyes Green, Corsley
(next to the Corsley Centre)

For children aged 2-5 years

Monday, Wednesday, Thursday and
Friday - 9am - 3pm

Now accepting 2 year-old funding in
accordance with Wiltshire Council guidelines

Mother and Baby Group

Tuesday mornings from 10am to 11.30am

Contact Hayley McMahon 01373 832298

www.littlecuckoos@hotmail.co.uk



CHRIS SEVIOUR
Building Services

07894 708949

cmseviour@gmail.com

Roofing, Loft conversions,
Extensions, Plastering,
Natural stonework



S B Services



Contact Sean

07828 671566

*For your garden maintenance
and home improvements*

Three Open Doors

Dear Friends,

As usual I am writing this several weeks ahead of New Year so I've got to try to stretch my thinking beyond Christmas to January when I will probably be in a bit of a heap to be honest, having housed and fed varying family members over the festive period and taken quite a number of services. Also, trying to keep the peace between those who, whilst they love their nearest and dearest, nevertheless find spending an extended amount of time with them, shall we say, a little challenging, is somewhat exhausting. All of this is an enormous joy too though and I shall be sad when the house is quiet once again.

I wonder what your thoughts are as you look back to not just to Christmas, but also to the rest of 2015? I suspect that for most people the year has brought both joy and sorrow, the expected and the unexpected. Because of my role as a parish priest I have the privilege of spending time with people at times of transition in their lives; at a baptism when amongst other things we give thanks for new life, at weddings which is great fun, and when someone dies, at a funeral, which in my book is the greatest privilege of all. I wanted to say that those of you who have lost loved ones this last year, you are particularly in my prayers; we had a number of very tragic deaths in our benefice last year and my heart goes out to those who begin 2016 without someone they have deeply loved.

So, in with new as they say, what will 2016 bring? Who knows! Being a parish priest has given me a certain perspective on life that I didn't have before and if you asked me what my tips (for want of a better word) are for this new year I would have to answer: give thanks for your life and for the opportunities you enjoy, for this beautiful peaceful place, for friendship and laughter. Give thanks for those around you with whom you share love because it is a gift and it is precious; tell them you love them, show them you love them, because giving and receiving love is the most important thing we can do in the short time we have on this earth. And if you are reading this feeling that there is no love in your life to be shared, then remember; you are passionately loved by God who knows all the secrets of our hearts and loves us still.

Happy New Year.

Love and prayers
Pauline

January Church Diary

Sunday 3rd January: Epiphany

8 am at St Mary the Virgin, Kingston Deverill: 1662 BCP Holy Communion

9.30 am at St Margaret's, Corsley: Eucharist

10.30 am at St Peter & St Paul's, Longbridge Deverill: Morning Worship



Tuesday 5th January

7.30 pm After Alpha Home Group. Details from Richard on 832594



Sunday 10th January: Baptism of Christ

9.30 am St Philip & St James', Chapmanslade: Family Eucharist

11 am at St Mary's, Temple, Corsley: Matins

11.15 am at St John the Baptist, Horningsham: Plough Sunday Service



Monday 11th January

10.30 am Time to Think Home Group. Details from Phil on 832845



Sunday 17th January: Epiphany 2

9 am at St Mary's, Temple, Corsley: 1662 BCP Holy Communion

10.30 am at St Margaret's, Corsley: Family Songs of Praise

10.30 am at St Michael the Archangel, Brixton Deverill: Eucharist



Tuesday 19th January

7.30 pm After Alpha Home Group. Details from Richard on 832594



Thursday 21st January

Church and Community Coffee Morning

10 am to 12 noon at the Three Horseshoes, Chapmanslade



Sunday 24th January: Epiphany 3

9.30 am at St Philip & St James', Chapmanslade: Eucharist

10.30 am at St Peter & St Paul's, Longbridge Deverill: Eucharist



Monday 25th January

10.30 am Time to Think Home Group. Details from Phil on 832845

Wednesday 27th January

Light Bites Bread & Soup Lunch – all donations to Juba School

12.30 pm to 1.30 pm at the Reading Rooms, Corsley



Sunday 31st January: Candlemas

10.30 am at St Mary the Virgin, Kingston Deverill: Benefice Eucharist

3.30 pm at St Philip & St James', Chapmanslade: Candlemas with Christingle



Sunday 7th February: Sunday next before Lent

8 am at St Mary the Virgin, Kingston Deverill: 1662 BCP Holy Communion

9.30 am at St Margaret's, Corsley: Eucharist

10.30 am at St Peter & St Paul's, Longbridge Deverill: Morning Worship

4 pm at the Minster, Warminster: Commissioning Service for Lay Worship Leaders

Candlemas and Christingle

So what have Christingle and Candlemas got in common? Well, both involve the lighting of candles, but there is a much more important connection. The idea of Christingles came from a Moravian Church in Germany in 1747. The minister, John de Watteville, gave children at the service a lighted candle with a red ribbon around it, representing Jesus being the light of the world. The final prayer of that first service was "Lord Jesus, kindle a flame in these children's hearts, that theirs like thine become". The custom went around the world with the church. Missionaries brought the Moravian Church to England in the 1700s. The word Christingle might be an 'English' version of the German 'Christkindl' (meaning little Christ child).

Christingles were made more generally popular here, by The Children's Society. The first Christingle service held in the Church of England was in 1968. People didn't think the service would work, as making the Christingles would be too complicated, but they were wrong! The custom spread very widely and is one of the most common and popular services from Advent to Candlemas, in the UK, especially among children.

Candlemas primarily focuses on Jesus' early life. Jesus' mother Mary presented him at the Temple in Jerusalem after observing the traditional 40-day period of purification (of mothers) following his birth. St Luke's gospel, describes a Jewish man named Simeon holding the baby in his arms and saying that he would be a light for the Gentiles (anyone not Jewish). It is for this reason that this event was called Candlemas.

According to some sources, Christians began celebrating Candlemas in Jerusalem as early as the fourth century and the lighting of candles began in the fifth century. Other sources say that Candlemas was observed by blessing candles since the 11th century. An early writing dating back to around 380 AD mentioned that a feast of the Presentation occurred in a church in Jerusalem. The festival is held on 2nd February each year.

And so, when we have our service of Christingle at Candlemas on January 31st (see details elsewhere in this month's Bridge), we will proclaim Jesus as the 'Light of the World', in a celebration of both of these wonderful traditions.

Rural Dean	Rev Pauline Reid revpauline@btinternet.com	01985 841290	
Associate Priest	Rev Di Britten	01373 832515	
Lay Pastoral Assistants	Richard Dean	01373 832594	
	Barbara Hughes	01373 832273	
	Claire Tanner	01985 218099	
Pastoral Visitor	Alan Hopkinson	01373 832393	
Churchwardens	John Helliard	01373 832803	
	Charles Thackway	01373 832048	
Deputy Churchwardens	St Margaret's	Judith Helliard	01373 832803
	St Mary's	Harcourt Gough	01373 832039
	St Philip & St James'	Janet Aylesbury	01373 832752
Benefice Administrator	Marion Muston cleyhillchurches@gmail.com	01373 839026	

Songs of Praise

Our service on 17th January will be a Songs of Praise to get the New Year off to a great start. If you have a particular request for your favourite hymn please let Marion (832755) or Phil (832845) know as soon as possible but in any case before 10th January. We will try to include as many requests as we can but if we cannot include your request this time there will be other similar occasions.

Welcome and Congratulations

Congratulations to David Wardle and Lucy Moore who were married at St John the Baptist, Horningsham on December 22nd.

Prayers and Sympathy

Our prayers and special thoughts are with the family of Nesta Reeves whose memorial service was held at St Margaret's, Corsley on December 11th.

Fundraising

We had a very successful Christmas Coffee Morning with many excellent stalls selling Christmas goodies. The 50/50 Club Christmas Draw took place and ten people were winners of cash prizes, with £200 being the first prize. Our thanks to Andrew and Annie Campbell for hosting the event and to the ladies of the Committee for organising the morning.

Copy for 3 Open Doors should be sent to Keith Muston at
themustons@btinternet.com subject 3ODs or phone 01373 832755.

If you would like to receive weekly news of Church events and activities, please send your email address to the above, with subject 'Through the Open Doors' or download a pdf from the 'churches' pages at www.corsleyandthebridge.co.uk



*Individually tailored holidays
for the very best in African travel*

J&C Voyageurs organises individually tailored African holidays for those looking for something special, memorable and away from the crowds. We will incorporate your distinct wishes and aspirations, with no detail overlooked, so that you are able to relax completely.

We have a passion for Africa and conservation of its wildlife, peoples and incomparable scenery. With over 20 years' experience exploring Africa and putting outstanding African holidays together, we can discuss hundreds of safari lodges, camps, beaches and city hotels with first-hand knowledge.

Telephone 01373 832111

Email mail@jandcvoyageurs.com

www.jandcvoyageurs.com



HolidaysNearLongleat.co.uk

A Dedicated website for;

Self Catering, Bed & Breakfast

Guest House, Camping & Caravanning

Accommodation all close to the Longleat Estate

npv plumbing & heating

Installation • Servicing • Repairs

Bathroom and tiling specialists

All plumbing and heating work undertaken

Our fully qualified plumbers offer all general plumbing services from boilers to bathrooms. We will gladly advise clients on the most suitable products for their property – be it heating systems, boilers, radiators, bathrooms or showers.

07738 940355

www.plumbersfrome.co.uk

Hypnotherapy

If you need help with:

Anxiety

Depression

Phobias (such as flying or spiders)

Panic attacks

Relaxation

Weight management

Smoking cessation

Natural childbirth

Confidence

Public speaking

Exam nerves

and much, much more...

Call ANJI HOLLAND on
07944 647 978 / 01373 832 898
to enquire or just for a chat

www.hollandhypnotherapy.com

With practices in Chapmanslade and Bath

I am a member of the National Council for Hypnotherapists
and am bound by their code of practice and ethics

Corsley WI December News

Carol Seward rounds up December's activities



What a busy year of celebration it was in 2015! With the Centenary of the WI and Corsley WI reaching its 95th Anniversary, the December meeting was yet another festive occasion for members, who enjoyed a super Afternoon Tea instead of a Christmas Dinner this year.

Members each brought a contribution for the buffet tea and the Reading Room looked magical with its beautiful decorations. With a picture quiz and a seasonal quiz on Christmas Carols, 'Secret Santa' gifts for everyone, entertainment on the piano by Geoff Titt, followed by carol-singing and a humorous WI version of the Twelve Days of Christmas making us all laugh, the afternoon was over all too soon. Thanks to everyone who helped make the afternoon so special.

On Thursday 14th January 2016 at 7.30 pm visitors are most welcome to join our

members at an open meeting to discover more about the night sky, in a talk by Maggie Daniels entitled 'Looking at the Stars'. The competition is for a star.

The Wiltshire Federation has organized various new events for members for 2016 and full details will be available in our January meeting.

If you are new to the area or seeking to make new friends, why not come to one of our meetings? They are always held on the second Thursday of the month, usually 2.30 pm in the winter months and 7.30 pm when the evenings are lighter.

If you would like any further information about Corsley WI, call Carol Seward on 01373 832446.

Everyone is very welcome to join us for the following activities:

Bridge Club	First and third Tuesdays each month, 2-4pm, Corsley Reading Room
Coffee Morning	First Tuesday each month, 10-12noon, Corsley Reading Room
Gardening Club	Third Wednesday each month, venues as per club programme
Lunch Club	Last Tuesday of the month, 12.30pm, various venues

More details on the Gardening Club and Bridge Club from Pauline on 01985 215760



Christingle at Candlemas

On **Sunday 31st January** we will be having a
Christingle at Candlemas Service
3.30 pm at St Phillip and St James' Church, Chapmanslade

Come and join in with making the Christingle
and helping to tell the story on a dark, winter's afternoon.
This will be a wonderful candlelit celebration for all ages.

In aid of The Children's Society

Stay for tea!

Please stay and enjoy tea afterwards with
scones, cakes, hot and cold drinks

Find further details at www.cleyhillchurches.org



Chapmanslade Motor Services

**Vehicle repair
and servicing**

**Brake
specialist**

**MOT preparation
and repairs**



**Batteries
Exhausts
Tyres**



Quality service at competitive rates

FREE ~ wheel balancing and tracking with new tyres

FREE ~ courtesy car

Electronic diagnostics available – most makes covered

Green Farm Industrial Estate, Chapmanslade

01373 832188 or 07711 256927

**Busy
Bees**



01373 455911

SPECIALISTS IN CLEANING & GARDEN MAINTENANCE

Our services include:

**Domestic Cleaning
Commercial Cleaning
Carpet/Upholstery Cleaning
One-off spring cleans
Trauma Cleaning
Builders' Clean
Garden Maintenance
House and Garden Clearance**

Amy: 07971 921651 or Caron: 07971 921617

E-mail: info@busybees2000.co.uk

www.buzzybees2000.co.uk

JOHN E S JONES

**GENERAL
BUILDER**



Carpentry, painting and
decorating, extensions, uPVC,
facias and gutters, fencing,
decking and patios

Also general repairs

Telephone 01373 832600

Mobile 07074 832600

Neil Carpenter brings us...

Cross Keys update

A lot has happened with regard to the Community Acquisition...

Unfortunately the Cross Keys has not been given Community Asset status. This is based on two reasons:

- Wadworth telling Wiltshire that they can offer the community everything the Cross Keys can offer.
- Poor support from the Parish Council, despite support from the village for the pub to be listed.

Ironically, if the application had been submitted when the Royal Oak was closed it would have been approved!

The decision does not stop the community buying the Cross Keys from Wadworth, it just means that we will need to progress quickly.

We have had a building survey done which has found significant work that needs doing to the fabric of the building – mostly due to a lack of maintenance and upkeep over the last ten years or so. However, we still believe it is a viable pub which can and does offer significant value, over and above simple profit, to the community. This has been set out in the draft business plan that will be shared with interested parties in the coming weeks. I would therefore ask that everyone who is interested (in whatever capacity) in

becoming part of the team saving the Cross Keys by taking it into community ownership, please let me know by email or drop a note in the box behind the bar at the pub.

In the meantime, as you can imagine, it is a very unsettling time for the team at the Cross Keys, who work so hard to support and be part of the village.

Please pop in and show your support – we're sure Shelley and the team would appreciate it.

Neil Carpenter
Neil@nmc2.co.uk
01373 832314



Weatherproof Windows Co.

- Renovation
- Replacement
- Draught-proofing
- Small repairs
- Replacement cords, pulleys handles, weights, glazing

All types of sash and wooden windows
suitable for Listed Buildings

Ian Gallagher
Fleecemill Cottage, 1 The Steps,
Buckland Dinham, BA11 2QR

Tel: 01373 474637 Mobile: 07929 938419

www.weatherproofwindows.co.uk

EVERGREEN GARDEN SERVICES

Garden maintenance and landscaping,
lawns, strimming, hedging, pruning
long and short term maintenance,
patios fencing, turf and seeding.

Over 20 years experience in
horticulture, landscaping and estate
management.

Contact Ben Hale

01373 825495

07879 492283



Rose Knight

House sitting and
dog and cat minding
service

01373 464904

07773 435254

knight_rosemary@sky.com



Darch Oil BOILER SERVICING & REPAIR

www.darchoil.com

We service and repair oil fired boilers.
All of our technicians are OFTEC registered and approved.
Call us on **01935 473302** for an instant quote or
visit www.darchoil.com and fill out the form and one of
our team will call you back during office hours.

Call us on **01935 473302** or email info@darchoil.co.uk for more information

ROGER PATCH GENERAL BUILDERS

Also offering purpose-made joinery

We now have a HETAS registered fitter enabling us to fit
Woodburners, Multifuel Stoves and Chimney Liners.

Cedar Cottage, Wolverton, Zeals, Wiltshire, BA12 6LW

Telephone 01747 840449 Mobile 07971 686973

Email rogeratwolverton@yahoo.co.uk



News from the Nest

Welcome to this month's news from
Corsley Cuckoo's PreSchool in Lyes Green, Corsley.

Happy New Year!

Here are some of our magical moments from 2015 – we're looking forward to making even more memories and learning experiences in 2016...



Cake sales fundraisers



Summer Fayre fun



A little wet at Corsley Show



Learning fun with our
new mud kitchen

We're back to school on Monday 4th January 2016!

Term-time opening hours: Monday, Wednesday, Thursday and Friday 9 am - 3 pm

Term-time Mother and toddler group: Tuesday 10 am - 11.30 am

For more information, please contact us on 01373 832298

www.littlecuckoos@hotmail.co.uk

TEA & sympathy

Considerate catering at a difficult time

All our food is homemade, we provide delicious teas, sandwiches and cakes through to more elaborate options.

We offer a truly bespoke, caring and professional service.



Telephone Kim Clark on 01373 832151 or 07843 056916

e-mail kim@teaandsympathy.uk.com

www.teaandsympathy.uk.com

CHANTRY CONSTRUCTION

stone walling • patios

drives • extensions

prompt reliable service

mini digger and driver for hire

01373 836787 07855 343388

COMPUTER & LAPTOP REPAIRS
UPGRADES / SYSTEMS & LAPTOPS

VIRUS REMOVAL / BROADBAND
WIRELESS / NETWORKING



FAST, FRIENDLY, PROFESSIONAL SERVICE
COMPETITIVE RATES
ONSITE OR WORKSHOP

CCO CompTIA

call
01373 302901

www.ntscomputing.co.uk
help@ntscomputing.co.uk

LAPTOP REPAIRS

We also replace
laptop screens,
keyboards,
CD-DVD drives,
fix overheating
and more

Forget-me-not

• GARDENING SERVICE •



Weeding, pruning, planting,
fence painting, etc

01373 464416

07890 850465

Do you need a plumber? Call...



Paul Antell Plumbing

07890 366832

01373 467427

Professional, reliable, friendly and local
paulantellplumbing@talktalk.net
www.paulantellplumbing.co.uk

Corsley Parish Council

Parish Council Briefing

Chairman, Neil Britten, rounds up December’s meeting

December saw the final quarterly meeting of the year with a fairly full agenda. The main topic was finance, the spending plans for the remainder of the financial year 2015/16 and the precept bid for 2015/16. We also dealt with a further planning application from the new owners of the Old School and discussed Streetscene and a number of other topics including developments with the Old School Playing Field (OSPF), broadband and Bay Tree Close. We also discussed topics for next year’s Annual Parish Meeting.

Finance

Budget and spending for FY 2015/16

The precept for 2015/16, i.e. Corsley’s share of your Council tax was £8,100 which represents £14.70 per elector (550 in number). A small additional income is derived from Little Cuckoos for their sub-lease of an area of the OSPF. The spending plan for FY 15/16, in percentage terms, is:

Grants and donations	38%
Administration (includes Clerk’s salary, insurance, WALC, etc)	38%
Reserves (PC asset repair fund, unforeseen items)	12%
OSPF annual maintenance	10%
Training	1%

Other than grants/donations and training, all other items have been spent or committed. The amount available for grants and donations is around £3,000 and has traditionally been used to support community organisations and projects. This year, it was decided to seek wider bids for a share of this money and there is a notice elsewhere in The Bridge which provides details.

Precept bid for 2016/17

It was agreed that this would be kept at 2015/16 levels, with a small uplift for inflation.

Len WHITE Memorial Fund

This small fund was set up in 1992 in memory of Len White, with contributions from the village. Its capital now stands at £2,680 and the Trust Deed allows the Trustees, the Parish Council, to make donations from the interest of the fund to the children of Corsley, between the ages of 5 and 11, for educational purposes. More details of the fund were reported in this brief around the end of 2014 and beginning 2015 and donations were discussed at this year’s December meeting in accordance with previous decisions.

The Trustees had neither received any requests nor had knowledge of any likely

candidates and no donations or grants have been made to-date. It was thus decided to include the category of educational needs for Corsley children between the ages of 5 and 11 in the notice, elsewhere in this Bridge, seeking bids for grants and donations.

(Please note that a grant is regarded as a payment to a specific project, whereas a donation is a gift in support of the general purposes of an organisation).

Planning application

15/11430/FUL and 15/11527/LBC

Corsley Old School, extension and internal alterations following change of use consent and erection of a double garage with room in roof and landscaping works.

This was the third time that the full (FUL) and listed building (LBC) applications had appeared before the Parish Council and the fourth time that the application had been considered, if the change of use application is included. On all previous occasions there had been wholehearted support for the project, which was regarded as a significant improvement to a disused Grade 2 listed building.

Both the latest LBC and FUL applications used an identical suite of 21 documents with one additional one for the LBC application from English Heritage. The latter offered no comments. A new bat survey was included in both applications and provided comprehensive detail of the survey and measures to be applied in mitigation to assure the bat habitat and roosting locations within the Old School.

The application sought approval for two changes, a reversion to the originally approved plan to build a new wing using

the footprint of the Old School as the first floor and a change from the original bi-fold external door in the 'snug' to a more simple French door. Both had been proposed as cost-reduction measures.

Notwithstanding the previous position held by the PC in respect of the development, there was considerable discussion about two aspects of the plans, the detached garage and the cedar cladding. Concern was expressed over the potential for a detached garage to offer conversion into a single dwelling and also the appropriateness of the cedar cladding in relation to rest of the building. Neither of these features was different from previous applications and the cladding was supported by the design statement as " ... purposely designed in a contemporary way to allow the evolution of the building to be easily read with the historic elements defined."

A vote was taken on a proposal that PC should ask for a condition to be imposed on the future use of the garage to attempt to ensure that it could not be converted to a dwelling. This was defeated by the Chairman's casting vote on the basis that any future change of use was protected by the planning process and no condition was needed or was likely to be placed by the planning department, based on recent past evidence.

PC comments supporting the latest plans were agreed.

Streetscene

General

There appears to have been some retrenchment from the original decision this summer to only take reactive maintenance action. A steward scheme has been proposed by the responsible County

Councillor to cover the clearing of ditches, grass cutting and minor pothole filling but, so far, this has only been put out through the Council communications arm, with no contact yet with Parish and Town Councils. At ground level, it is expected that the same individuals will be delivering our basic maintenance after 1st April 2016.

Court Lane flooding

An attempt has been made by the 'riparian' landowner to stem the flooding and the responsible Wiltshire Officer Council Drainage Officer is waiting to see "...if the bales do the job after a sensible period of time." There is also work booked for the reworking of the kerb in an attempt to divert the water away from the Court Lane entrance. The Council Officer has also discussed with the two householders concerned the action they can take on their own property to minimise the impact of floodwater. The responsible Officer has been very helpful and proactive throughout.

Geys Hill Passing Place

Wiltshire Council have been unable to agree the traffic management with Balfour Beatty Living Places (BBLP) as the latter were insistent on a full temporary road closure. Not only would this have pushed up the cost significantly, but it would also leave insufficient time to organise the closure prior to the end of BBLP's contract on the 31st March 2016. There is a moratorium on new orders to BBLP from the 1st December 2015 which makes things even more difficult. At the moment the best prediction for implementation of this is sometime after the 1st April 2016.

C274 30mph speed limit (Lane End and Heathside to St Margaret's Church)

There is one single objection to this and the cabinet member report to deal with the

single objection is currently being prepared. Once it has gone through the system the implementation should be sometime in early April 2016, once the new highways contractor has been appointed.

Road resurfacing

The work briefed to the Parish Council last January happened during the summer with most of the unclassified roads south of the A362 being re-surfaced. The outstanding major work required is the resurfacing of Cley Hill Lane. This is well reported and supported by the Parish Council. The Area Engineer tried to get it included in the 2016 programme, but was not successful. He has promised to continue raising it with the Major Maintenance Team and in the meantime will monitor the road's state and carry out minor repair work as required.

Old School Playing Field (OSPF)

Two new developments were reported. First, the PC had received an application from Little Cuckoos with two proposals. One was to extend the area leased by them, in return for some changes to the term of the lease and relieving the PC of the maintenance burden for the new field area taken over. Little Cuckoos would fund a new boundary fence and the PC would arrange a new access to the remainder of the field for the general public and maintenance. Their second proposal was to negotiate a direct lease for their area for their area with Wiltshire.

The second new development is that the PC has established with Wiltshire's legal department that it cannot re-negotiate the terms of their lease with Wiltshire until ten years have elapsed since the closure of Corsley School. This should be the end of 2017 and coincides with the end of the lease requirement to retain an area for

team games. This legal statement effectively reduces the options for the OSPF to the status quo for another two years.

The PC resolved to consider and make a decision on how to proceed with Little Cuckoos' proposals at their next occasional meeting.

Broadband

Following further discussions between myself, Neil Carpenter, Hugh Deed, Fleur de Rhe Philipe and Wiltshire Online (WoL), WoL have agreed to broker a meeting with BT Openreach, attended by WoL and ourselves to allow us to expose the results of the survey and the technical work done by Hugh on what should be possible in Corsley. We are not in a position to challenge the decisions by WoL on the phase two roll-out, but do stand a chance of putting Corsley's needs and a much better view of the value-for-money of our case firmly in the minds of both key parties. I will keep you informed of developments via The Bridge brief and the website. Hugh and Neil have agreed to update the village at the Annual Parish Meeting (APM) on 7th March 2016.

Social Housing – Bay Tree Close

The team from Wiltshire Council were very pleased with and grateful for the interest shown by the village to their drop-in presentation before the quarterly meeting. The major points they took away from the session and their feedback are:

- Recognition that the BT/broadband service to the village is at full capacity.
- There is no longer need to meet Code for Sustainable Homes Level 4 in full as this requirement has been dropped from government standards and from the Council's Core Strategy, but they are

still required to meet Code 4 in terms of energy efficiency.

- The needs survey carried out in October 2014 can only be considered as part of the housing needs evidence. Under-occupancy data indicates that there are six households in the 65+ age category who are under-occupying larger social housing units in the parish which could potentially be freed up for younger families.
- Recognition that there are no pavements to provide safe walking route from Bay Tree Close to the rest of the village, though the Highways Team have not raised any objections.
- The lack of amenities in the village is not ideal but many small villages do not have many facilities but are still in need of affordable housing.
- Option one was the preferred option by almost all in attendance at the consultation event. I have attached a copy of the two options for information.

The PC remains particularly concerned about the pedestrian access from Bay Tree to the 'triangle', where the bus stops are placed, to Bay Tree and beyond, and will ensure that this is raised in appropriate quarters when the planning process for the houses begins.

Although the PC preferred the layout of option two, this was not a strong preference and the obvious leaning of those who attended the 'drop-in' for option one is noted. The plans for the two options will be put up on The Bridge website as will the full reply from Wiltshire on their conclusions from the event. Don't forget that the most important thing is to register on the housing register if you are interested in occupying one of the bungalows.

Annual Parish Meeting (APM)

Elsewhere in this edition of The Bridge is a notice explaining the APM, seeking input to the agenda – your opportunity to make sure that the issues that concern you are exposed to the village and the PC. At the moment broadband is the major topic, but there may be others which you wish to raise.

Cross Keys Community Asset bid

As I am sure is well known by now, the bid by the Corsley War Memorial Playing Field Committee for the Cross Keys to be registered as a Community Asset was turned down by Wiltshire. The letter of refusal can be seen on The Bridge website. The PC was invited by Wiltshire Council to offer comments to the process of consideration of the bid and, for information and the interests of openness and balance, these comments are published on page 13 of this edition of The Bridge and are also on the website.

Date of next meetings

Annual Parish Meeting	7th March
Annual Parish Council Meeting (Election of Chair)	16th May
Quarterly Meeting	6th June
Quarterly Meeting	5th September
Quarterly Meeting	5th December

Occasional meetings, at short notice, will also be held to discuss planning applications and other urgent business. Please watch the village noticeboards for these.

Happy New Year to one and all.

Neil Britten
Chairman, Corsley Parish Council
neil.britten@btinternet.com

Corsley Parish Council Annual Parish Meeting

6.30 pm, Monday 7th March
Corsley Reading Rooms

This YOUR meeting!

**This is the annual occasion when
you have a chance to discuss the
issues which you believe most affect
YOUR village.**

It is almost certain that village broadband will be on the agenda, but the PC is seeking suggestions for other agenda subjects from the village, including input from outside bodies or individuals from whom you may wish to hear. We will be inviting our County Councillor Fleur de Rhe Philipe to attend.

Please pass any requests or ideas to your Parish Clerk, John Willcox by email or phone by 31st January 2016 to
**corsleypc_jdw@aol.co.uk or
01373 832171**

All Parish Councils in England are required by law to hold an Annual Parish Meeting each year. The meeting allows the Council and local community organisations to explain what they have been doing over the last year and electors can have their say on anything which they consider is important to the people of the parish. Note that it is not a Parish Council meeting although it is chaired by the PC.

Steve Dayman-Johns

Driving Instructor

Condensed Courses and
Gift Vouchers available

Tel 01373 865422 - Mob 07730 445648

email stevekdj@gmail.com



Cost-effective, no-nonsense, efficient accounting, bookkeeping, VAT, payroll and CIS solutions for sole traders and Limited Companies.

Self-assessment and taxation services also available.

- ▶ Fixed fees agreed in advance
- ▶ Free initial consultation
- ▶ Westbury office with free parking

Contact Jackie Welch

01373 822363 or 07790 325321

jackie@jmwaccounting.co.uk

www.jmwaccounting.co.uk

Dashing Dusters

- Cleaning and ironing to a high standard
- General domestic assistance
- Commercial cleaning
- Reliable
- Reasonable rates
- References available

01373 832484 (evenings)

M W Garden Services

20+ years experience

A tailor made service for all types of garden maintenance

Insured and CBI's checked

mark22.weaver@mypostoffice.co.uk

Telephone 01373 832854

Mobile 07921 818452

Getting married?

Special occasion?

Classic 1960 Hillman Minx Estate car for hire

Chauffeur ~ bows ~ flowers ~ champagne

Reasonable rates

Please contact Amanda on

01373 827795 or 07720 673698

Hardwood logs for sale

(cut to size if required)

FREE DELIVERY

R M Log Supplies

Beckington

Call Robin on

07876 621929

Offices to let – Corsley

Need fast broadband? We have it

- 100MB dedicated leased line (fibre)
- Excellent working environment
- Ample parking

Call 01373 832120



Whitbourne Chapel

A peaceful and prosperous New Year to all our readers!

God never changes...

The New Year brings out different feelings for us, doesn't it? Some look forward to it, seeing it as time for a new start. Maybe for others it's an opportunity to put behind bad things that might have happened during the last year. For others, maybe it's as though it's another hill to climb – a new summit to conquer. There is of course nothing we can do to stop time moving. We have to go with it as our calendars change from the 31st December to the 1st January.

We worship God though, who never changes. We believe that all good things come from Him and His love for us lasts forever. In the Bible, one of the Prophets (those writing many years before our Lord Jesus came into the world), Jeremiah wrote "Through the Lord's mercies we are not consumed... They are new every morning. Great is Your Faithfulness" (*Lamentations 3 v 22 and 23, New King James Bible*)

God's wants the best for each of us and will bless us if we will trust Him. He has a plan because of His love for each of us. If He dealt with us as we deserve, He would have given up on us a long time ago. But He hasn't and continually wants to give us more.

So a Happy New Year to each and every one – and remember our God, who loves

us and who never changes regardless of the date on our calendars!

*Contributed by Chris Andrews
regular Whitbourne Chapel preacher*

I must buy a new scrapbook!

I can't believe a year has passed, since I took over the Chapel's scrapbook of events. It's been quite a year, of good times and sad ones. In January, I ran across the carpark to Steve Bain and Mandy's house for help with a burst water pipe in the kitchen – thank you, Steve, for your practical help, and you, Mandy for offering morning coffee and tea facilities to us all. In April we welcomed Fred and Sylvia Carpenter to Chapel on the occasion of their golden wedding anniversary. In May, one of the Chapel's youngest regulars, Harry Carr, began providing me with scrapbook photos. Thank you Harry – the photo pages would be much duller without your contributions. In August, there was Corsley Show; oh, what a lovely time we had, despite the mud and the rain! We ended the year on a sad note, with a new burial in the grounds, that of baby Joash Oliver in November. May 2016 be a year of hope and renewal for his parents and their families.

*Gill Redman
01985 215062
paradiselost@btinternet.com*

Regular times

Services every Sunday morning at 11.00 for about an hour (coffee served at 10.45)

Chapel Prayer meeting every Sunday morning from 9.20 - 9.40

Communion on the first Sunday of each month at 12 noon for 15 minutes



COMPUTER PROBLEMS?

01373 812804

Email
Advice for new users
Anti-virus defence
Web sites
Custom programming

Networks - home & office
Home tuition
Web access
Privacy & security
Repairs

www.technojeeves.com

info@technojeeves.com

No Job Too Small



Local Electrician

Part "P" registered NAPIT approved
Domestic and Commercial Work Undertaken
Third Party Testing

Call for a Free no obligation Quotation

Tel: 01749 850769

Mobile: 07779 429786

email:

iain@fushi-electrical.co.uk

www.fushi-electrical.co.uk



E G MARTIN LTD Heating Oil Distributors

Telephone 01373 822784

Victory Road, West Wiltshire Trading Estate
Westbury, Wiltshire, BA13 4JL

WESTERN SKIP HIRE

Telephone 01373 865247

Victory Road, West Wiltshire Trading Estate
Westbury, Wiltshire, BA13 4JL



Windows, Doors & a whole lot more!

- **ENERGY RATED** windows - reduce your heating bills
- **NEW SECURITY** windows with Shootbolt locking
- **EXPERT FITTING** by our own fully trained team
- **REPUTATION** Over 26 Years of satisfied customers

Come & visit our Indoor Show Village

See our full range of Windows, Doors
Conservatories & our **New Orangery!**
at Woodcock Industrial Estate, Warminster

Tel 01985 215566  www.NewWindowsLtd.co.uk

new WINDOWS



WILTSHIRE MOVIOLA

in association with
CORSLEY READING ROOM MANAGEMENT COMMITTEE
proudly presents
CINEMA CORSLEY

SUFFRAGETTE

(12A)



in Corsley Reading Room
Thursday 21 January at 7.30 pm

*Doors open 7.00 pm
Refreshments and licensed bar*

Tickets: £6.00

Available from Acres Supply Garden Centre (cash only): Tel 01373 832591

Visit our website at: www.moviola.org



Corsley Reading Rooms

Attractive function hall, smaller meeting room and kitchen facilities all available for hire

Parties • clubs • meetings • classes • etc

Contact Rosemary Collins for details

01373 832789

NEED HELP WITH YOUR GARDEN?

Hedge cutting • Lawn mowing
Strimming • General gardening

Call Rob Clements

Tel 01373 832683 Mob 07586 337118

Wren House

Residence for the retired and elderly

Wren House in Warminster is a long-established, elegant retirement home, specialising in individual care in gracious surroundings. Having just thirteen rooms, each with a private bathroom, we are able to offer the ambience of a family home, together with caring staff and the facilities to enable our residents to enjoy their later years with dignity.

Wren House serves fresh, locally-sourced, home-cooked food. Residents enjoy a varied activity programme which includes a gardening club and our own choir.

Mrs Ellie Simmonds

Wren House Ltd, 32 Vicarage Street, Warminster, BA12 8JF

Telephone 01985 212578

wrenhousewarminster@hotmail.com

www.wrenhousewarminster.co.uk

ST DAVIDS WHITSAND BAY CORNWALL



Holiday Let
Sleeps up to 8
01373 464870

www.stdavidswhitsand.co.uk



Kevin Knight Clock & Watch Repairs

Over 30 years' experience
All clock and watch repairs
undertaken. Free estimates.
All work guaranteed

01722 331969 or 07900 928451
email kevindavidknight@gmail.com

Paul Ledbury Quality Painting and Decorating

30 years experience

INTERIOR AND EXTERIOR
GENERAL MAINTENANCE

5 Hampshire Gardens
Westbury, Wiltshire
BA13 3EX

Telephone 01373 858163
Mobile 07976 242045

CLARION

electrical

Part P registered & guaranteed



Making household electrical circuits work safely

clarionelectrical@btinternet.com

*Fifteen
years in
the trade*

01985 216641 07766 355237

Jammy Jewellery

Personalised fingerprint
and footprint jewellery



www.jammyjewellery.co.uk

Allsorts of Fencing

Peter Allsop

allsortsoffencing.co.uk

All types of domestic and agricultural
fencing supplied and erected

Also:

- Decking and patios
- Sheds, pergolas and archways
- Topping of fields and paddocks

Allsorts-of-fencing@hotmail.co.uk

01373 832339

07710 180551

Black Dog Farm Bed & Breakfast



You will find a friendly welcome and a
hearty breakfast in our listed Georgian
Farmhouse. The quality en-suite bedrooms
contain everything you need to ensure a
comfortable stay.

Lyn and Fraser Mills

01373 832858 or 07878 954563

Black Dog Farm, Chapmanslade,
Wiltshire, BA13 4AE

www.blackdogfarm.co.uk

DAVID NOBLE

APPROVED ELECTRICAL CONTRACTOR

- Complete installations
- Minor works/repairs
- Testing
- Intruder alarms
- Lighting design



5 Swaledale Road
Warminster, Wiltshire
BA12 8FH

Tel 01985 214630
Mobile 07970 618232
dcnoble@btinternet.com



KB Landscape

30 years in landscaping

Phone

01373 832371

Mobile

07951 297173

Kevin Brixey - for quality and experience

5 Red Cottages Corsley Warminster Wiltshire BA12 7PS

Landscaping
Patios and paths
Turfing and seeding
Brick and stone walling
Decking and pergolas
Block paving
Gravel drives
Pond work
Fencing

Chapmanslade 12 (Part) Diversion Order

On 18th November 2015, the Secretary of State for the Environment Food and Rural Affairs confirmed the above order made under section 119 of the Highways Act 1980.

The effect of the order as confirmed is to divert that length of public footpath at Dye House Farm, Chapmanslade, leading from OS Grid Reference ST 8309-4742, at its junction with the U/C 9002 road, in a north-westerly direction for approximately 35m, then leading west-north-west for approximately 24m, then leading west-south-west for approximately 56m and then generally south-west for approximately 75m to OS Grid Reference ST 8292-4744, to a new line leading from OS Grid Reference ST 8308-4739, at its junction with the U/C 9002 road, in a west-north-westerly direction for approximately 165m to OS Grid Reference ST 8292-4744, having a width of 2m, as shown on the order map. The order also has the effect of modifying the Warminster and Westbury Rural District Council Area definitive map and statement dated 1953 accordingly.

A copy of the order as confirmed and the order map have been placed and may be seen free of charge at Rights of Way and Countryside, Waste and Environment, Wiltshire Council, Unit 9, Ascot Court, White Horse Business Park, Trowbridge, Wiltshire, BA14 0XA from 9 am to 5 pm, Monday to Friday. Copies of the order and map may be bought there at the price of £5.

‘IT for silver Surfers’ 2016

Following the successful running of the IT sessions for silver surfers in 2015 it has been decided to evolve it for 2016 and run the session as a ‘club’. All abilities are welcome, bring your IT challenges and problems, come and share and learn from others under our guidance.

The club begins on 20th January and then 3rd Wednesday of every month

10-12 noon at Corsley Reading Room

£3 a head per session including coffee/tea and biscuit.

The sessions will include Microsoft Windows, tablets – iPad and android-based machines and also photographic software. Specific topic sessions may be run from time-to-time if there is demand.

Find more information on the website hdwebsites.wix.com/crr-it

Anyone wanting a very basic ‘getting started’ session is also welcome to register interest on website and these will be run on an ad hoc basis.

Come along to see one of us at the Reading Room coffee morning, around the village or phone 01373 832897 if you want to know more. If you have not been before it would be appreciated if you could register via the website but its not essential – just turn up on the day!

Hugh Deed and Gill Parkinson



What are you not saying?

Caroline Le Vine, Counsellor in Corsley

I'm sitting here yawning away, trying to think of what to put in this

article, running through ideas in my head, dismissing most of them. They're dull, too difficult to write in a short piece, I've done it before... and so on.

What am I not saying to myself? Well, the yawning gives it away, really – I don't want to be doing this now. I'm tired. It's my last week of work before the Christmas break and my mind is elsewhere. Acknowledging my reluctance and then making a choice about what to do about it is important, I think. I could just bash on and wrangle something half-hearted onto the screen without reflecting. It probably wouldn't be enjoyable to write or to read, though. It wouldn't be all that engaging because it wouldn't be authentic.

Stopping and checking in with myself, though, gives me some information. It allows me to be honest about not wanting to be working on this at the moment. OK. So now I know this. Next question: what do I do about it? Option one is to come back to it later when the deadline is closer. Option two, junk the whole thing; let Viv the editor know I won't be contributing this month. Option three is to be honest and write about what I'm feeling – clearly, the one I've chosen. Why did I choose this one? Doing it later would just delay the process and increase my discomfort; like leaving your homework until Sunday night. Not doing it at all would mean I miss the opportunity to

connect with you and to remind you that I'm here and – who knows – some of you might miss me! The whole process of reflecting, acknowledging what's there and making the choice to pursue option three gives me much more freedom and the words flow relatively easily as a result.

The key, of course, is self-awareness and the courage to admit the thing you might feel uncomfortable with. That way, we give ourselves choices for which we can then take responsibility.

I've stopped yawning now.

If you'd like to come and see me, I practise at St Margaret's Church, Deep Lane, Corsley. A first meeting of up to half an hour is free.

07817 192008

enquiries@carolinelevine.co.uk

www.carolinelevine.co.uk

or find me on www.counselling-directory.org.uk

Looking for a new interest for 2016?

Why not come and join our church flower arrangers in Chapmanslade and Corsley?

Everyone is welcome!

If you would like to know more please contact

Rev Di Britten
01373 832515



Small ads

£1 for EACH item for sale or wanted (cash only please) - at one of the two drop-off locations)

Please note: no cash, no advert!

FOR SALE

240v **cement mixer** complete with rubber wheels and stand **£55. 01373 832231**

FOR SALE

Bosch AvantXX **dishwasher** in excellent condition **£75.**

Well-used Zanussi TD201 **auto reverse tumble drier** – **£ donation to Church funds.**

185 **pantiles** – **£80** the lot, or **50p each.**

Mahogany, painted **stable-type door**, glazed top half, 76 cm x 173 cm **£80.**

Panasonic **microwave** with trim and fitting brackets **£30**

For any of these five items please contact **01373 832515**

Answers to Bob's Bafflers

- 1 The Beano
- 2 A tightrope walker
- 3 Top of the Form
- 4 Medium-density fibreboard
- 5 Bavarian Motor Works
- 6 Fish and chips
- 7 Eamonn Holmes
- 8 Mayor of New York
- 9 Clowns
- 10 Diurnal
- 11 13
- 12 Fermentation

Local organisation adverts

£2.00 per month for a small boxed advert or £7.50 for a full page. Full page adverts are allocated depending on space available and cannot be guaranteed. All monies must be at one of the two drop-off locations (Barter's Plant Centre or Acres Supply Garden Centre) by **4pm** on the **19th** of the month. Please note: no cash, no advert!

Trade advertising

Annual trade advertisements (12 issues, when space is available)

1 space	(69mm wide x 33mm high)	£22.00
2 spaces	(69mm wide x 66mm high)	£42.00
3 spaces	(quarter page - 69mm wide x 100mm high)	£60.00
4 spaces	(138mm wide x 66mm high)	£75.00
6 spaces	(half page - 138mm wide x 100mm high)	£104.00

Trade advertisement material should be supplied in print-ready format, to the chosen standard size and correct shape.

For trade advertising enquiries, please contact David James (Trade advert coordinator/Treasurer) at either thebridge832@gmail.com or 01373 832443.



Garden Machinery Specialist

Authorised Dealer

HONDA

STIHL

SALES • SERVICE • PARTS



Professional Tree Surgeons

- **Tree pruning**
- **Felling**
- **Hedge trimming**
- **Barn-dried logs**

Andy Brake

01373 832965

www.mendipmowers.co.uk

Green Farm Ind Est, Chapmanslade, Westbury, BA12 4AN

01373 830429

www.newlandstreecare.co.uk

cloud
homecare

Quality care and
support in Warminster
and the surrounding
villages



We are a small, Corsley based care provider

**We provide care to people who need support
to remain living in their own home**

**Please telephone or email us, or visit our
website for further details**

**Tel. 01373 832 597 enquiries@cloudhomecare.co.uk
www.cloudhomecare.co.uk**

ACRES SUPPLY

WHERE GARDENS GROW



ACRES SUPPLY GARDEN CENTRE
BAY TREE FARM, CORSLEY
NR WARMINSTER
WILTS, BA12 7PP

01373 832591

OPEN 7 DAY A WEEK

www.acressupply.com

FG COLLIER

KITCHENS • BATHROOMS • INTERIORS

WHOLE HOUSE DESIGN & SOLUTIONS



FG COLLIER LTD 29-35 EDWARD STREET WESTBURY WILTSHIRE BA13 3BL
TEL 01373 822227 EMAIL INFO@FGCOLLIER.COM WEB FGCOLLIER.COM