

The Bridge

February 2024

monthly magazine for the villages
of Corsley and Chapmanslade



Support the RDA Quiz Night, watch some films at the Corsley Film Festival, partake in some coffee mornings, get crafty, participate in the Parish Council meetings, enjoy a Lite Bites soup lunch, there's lots to do in February...



Acer Tree Surgeons Ltd are Wiltshire based, and approved by the Arboricultural Association. Our team are all NPTC qualified and first aid trained and proof of insurance is sent out with every quote

Tree removal – dismantling and felling

Crown reductions, re-shaping and pruning

Hedge cutting

Stump grinding

Qualified surveys and management of trees

Free no-obligation quotations and health check

Contact Nick or Roy on 07590 986261 or 01373 832026

royderham@acertreesurgeons.co.uk

www.acertreesurgeons.co.uk

The Old Post Office, 85 High Street, Chapmanslade, BA13 4AN



FROME HEATING & PLUMBING

25 years' experience.

Oil, Gas & Plumbing.

Servicing & installations.

Landlord gas safety checks.

Unvented hot water storage.

Matt Knight

Warminster.

07896522738

fromeheat@gmail.com



J.L.KNIGHT & SON LTD

Heating, Plumbing

& Property Maintenance

Call Jason/Lou

Tel: 01373 832866

Mobile: 07827 454844

Email: jlknight23@yahoo.com

OVER 30 YEARS
EXPERIENCE



The Bridge

monthly magazine for the villages of Corsley and Chapmanslade

Articles

Please submit articles either by email to **paradisefound86@icloud.com** or by hand (legible handwriting please!) and take them to the drop-off locations at Barters Plant Centre, Chapmanslade, or Acres Supply Garden Centre, Corsley by the deadline – and with the fee!

News, reports, updates, thank you's, etc, from individuals or local organisations are free – the more the merrier – keep 'em coming!

File types

Save your files as .doc – please don't send .docx files – I can't always open them successfully.

Advertising:

Small ads are £1 for each item whether 'For Sale' or 'Wanted'.

Events/local organisation ads

(churches, clubs, playgroups, etc) are £2.50 per month for a boxed advert.

Full page ads cost £8, are subject to space availability and cannot be guaranteed,

If you are advertising, don't forget to take the fee – cash or cheque in a sealed envelope please, to either of the drop-off points (Barters Plant Centre or Acres Supply).

Please note: no cash, no advert!

Trade advertising

Please see information on the last page.

In this issue...

3 Bob's Bafflers
a cunning quiz

8 Open Door Warminster
drop-in discussions

12 Tennis Club
from over the net

Corsley WI
news from the ladies

Six Open Doors
news from the pews

Parish Council briefing
Corsley

28 Parish Council briefing
Chapmanslade

32 Wonderful Walks
delightful Devices

37 Whitbourne Chapel
chapel colloquy

17

19

24

Deadline

**Deadline for articles
or adverts for the next
issue of The Bridge is
4pm 19th February**

**Please note that no
items will be accepted
after this date**

Diary Dates



February

Tuesday 6th

Coffee Morning – 10 am to 12 noon, Corsley Reading Room

Thursday 8th

Chapmanslade Parish Council - public meeting at 6.30 pm, followed by PC meeting at 7.30 pm, Chapmanslade Village Hall

Warminster Group RDA Quiz Night – doors at 7 pm, Quiz at 7.45 pm, Conservative Club, Prestbury Drive, Warminster, BA12 9LB

Corsley WI – a talk by Garston Vets about their Green Vets Award, Corsley Reading Room

Tuesday 13th

Whitbourne Chapel Coffee Morning – 10 am to 12 noon, Temple, BA12 7QN

Wednesday 14th

Crafternoon – 3 to 5 pm, Three Horseshoes, Chapmanslade

Thursday 15th

Community Church Coffee Morning – 10 am to 12 noon, Three Horseshoes, Chapmanslade

Saturday 17th

Frome Inner Wheel – Soup and Puds – 12 noon, Chapmanslade Village Hall

Wednesday 28th

Lite Bites Soup Lunch, from 12.30 pm, Corsley Reading Room

Crafternoon – 3 to 5 pm, Three Horseshoes, Chapmanslade

Friday 23rd

Corsley Film Festival – doors at 7 pm, films start at 7.30 pm and finish by 9.45 pm

Whitbourne Chapel Coffee Morning

**Free cakes, coffee
and chat**

**Every 2nd Tuesday of each month
from 10 am to 12 noon**

Temple, Corsley, BA12 7QN

**If you need transport,
call Adrian on 07977 935755**

Wiltshire Mobile Library

Chapmanslade School

Arrives 1.30 pm, departs 2.30 pm

Wednesday 7th February

Wednesday 21st February

Wednesday 6th March

Wednesday 20th March

Wednesday 3rd April

Wednesday 17th April



ATM FLOORING

CARPET AND FLOORING SPECIALIST

Local business with 27 years experience.

~

Supply and fit carpet and flooring.

~

Servicing Westbury and surrounding areas.

~

Free quotes, measuring and sample service.

☎ 07970 031066

🌐 www.atmflooring.co.uk

✉ atmflooring@hotmail.com

Remembering Marion

On behalf of myself and my family I would like to say thank you for the very kind messages of sympathy and support we received following Marion's passing. They were a source of great comfort and support and truly appreciated by us all.

Geoffrey Titt

Mole Catcher

01373836350

07512681111

No Mole

No Fee



For up-to-date information such as occasional parish council meetings, church services, previous editions of The Bridge, local clubs and activities, business listings, and other useful information, please visit

www.corsleyandthebridge.co.uk

Want something added? Just email the Editor with your request!

Bob's bafflers

- 1 How old was the Queen Mother when she died in March 2002?
- 2 What are Duke of Burgundy, White Admiral and Essex Skipper?
- 3 What type of dwelling has the same name as a group of camels?
- 4 Whose nose is pecked off in the nursery rhyme "Four and Twenty Blackbirds"?
- 5 What can be complex, mixed, or vulgar?
- 6 In Monopoly, how much does it cost to buy a railway station?
- 7 What is the most common street name in the UK?
- 8 During which wars were Martello Towers built along the south coast of England to protect England from invasion?
- 9 The Highway Code recommends that you should take a minimum break of how long after every two hours of driving?
- 10 Which World Heavyweight boxing champion was known as "The Brown Bomber"?
- 11 Which is the nearest town to Beachy Head, the chalk headland in East Sussex?
- 12 In decimal notation, what is the name of the number one followed by one hundred zeros?

Answers on page 40

Corsley Film Festival 2024

Part of the London Mountain Film Festival which runs from 23rd February to 10th March*



Film Shows are back at the Reading Room

Friday 23rd February and Friday 8th March

Doors at 7pm, films start 7.30 and finish by 9.45 pm

A selection of short films will be shown each evening

Details of each evening and how to buy tickets (£2 each) are on our website, along with other information

We would appreciate online purchases in advance, fully refunded should we need to cancel

Online booking open 1st February

The bar will be open serving wine and tea/coffee

The intention is for these to be social occasions as well as film showings

We look forward to seeing you at the films!

www.corsleyreadingroom.org.uk



*LMFF supports filmmakers in bringing their work to those who have an interest in the many ways in which we interact with our planet including adventure sports, societal issues, and environmentalism.



Pears Electricians

Nigel Charteris - BSc (Hons) M.I.E.T.



Professional Local Electrician

A HIGH STANDARD OF WORK AT REASONABLE RATES

Part P registered with www.napit.org.uk - Testimonials and references available

Faults & Troubleshooting • Repairs & Improvements
Installation Condition Reports • Boiler Wiring

www.pearselectrical.co.uk

01985 213314 or 07717 534026



S B Services

Contact Sean
07828 671566

*For your garden maintenance
and home improvements*

DAVE THE PAVE

WESTBURY BASED

- Brick & Block Pave Drives • Resin Drives
- Yards • Patios • Paths • Kerbing • Fencing
- Decorating • Extensions and New Builds
- Walls Built • Kitchens Supplied and Fitted
- Plastering • Rendering • Diggers & Drivers
 - Doors Supplied & Fitted
- Waste away • Soil & Hardcore
- All types of groundworks undertaken

**WE CAN'T BE
BEATEN ON PRICE**

APPROVED CONTRACTOR FOR



QUOTES ARE FREE | ALL WORK IS GUARANTEED

07710 691052



GIVINO

GIN & WINE

- 400+ Wines
- 60+ Vegan Wines
- 30+ Fortified Wines
 - 40+ Gins
 - Christmas Gifts
 - Tastings & Tapas



Mixed Wine
Case Specials



Tuesday - Friday 10am - 5.30pm | Saturday 10am - 4pm
WWW.GIVINO.CO.UK 0330 056 2995

R18 Marshall Way, Commerce Park, Frome, BA11 2FE
 Follow directions from the Budgens roundabout.



Mole Catcher

01373836350

07512681111

**No Mole
No Fee**



BECKINGTON PHYSIOTHERAPY PRACTICE

Has relocated to

Shawford Farm (A36)

Beckington

BA11 6SQ

Keep active with Physiotherapy

Lestley Fussell MCSP, SRP, AACP

With over 30 years of experience specialising in treatment of muscle, and joint problems including:

Back and neck pain

Work and posture related disorders,

Sports injuries,

Joint and muscle problems following accidents and surgery,

Arthritic conditions.

Home visits can be arranged.

Contact 01373 831483

Email lfussellphysio@gmail.com

Come and see us at our new address,

<https://www.beckingtonphysiotherapy.co.uk>

DAVID EDMUNDS & CO

ACCOUNTANTS & TAX CONSULTANTS

*Specialists in the self-employed, small and medium business and self assessment.
Preparation of accounts, VAT, PAYE, income tax and corporation tax returns.*

*Personal, friendly service
Evening appointments by arrangement*

Home 01373 832430

Bride by Design

Bridal gowns and accessories



2 Silver Street
Warminster, BA12 8PS

Please contact us to
arrange an appointment

t. 01985 217216

e. info@BridebyDesign.biz

www.bridebydesign.biz

COMPUTER & LAPTOP REPAIRS
UPGRADES / SYSTEMS & LAPTOPS

VIRUS REMOVAL / BROADBAND
WIRELESS / NETWORKING

nts
COMPUTING

FAST, FRIENDLY, PROFESSIONAL SERVICE
COMPETITIVE RATES
ONSITE OR WORKSHOP

CCC CompTIA

call

01373 302901

www.ntscomputing.co.uk

help@ntscomputing.co.uk

LAPTOP REPAIRS
We also replace
laptop screens,
keyboards,
CD-DVD drives,
fix overheating
and more

James, Rob and Adam, former employees of Roger Patch Ltd are pleased to introduce...

CMP Complete Ltd

General Builders

19 Swaledale Road, Warminster, BA12 8FH

James 07801 868288

Rob 07766 905131

email cmpcompleteltd@gmail.com

HETAS registered to fit woodburners

UPVC REPAIRS WILTSHIRE.CO.UK

FOR PROFESSIONAL WINDOW & DOOR REPAIRS

Are you having a problem with your UPVC windows or doors?

- ✓ Misted glass
- ✓ Broken or faulty window hinges
- ✓ Faulty locks
- ✓ Jammed windows or doors
- ✓ UPVC door adjustments
- ✓ Window and door handles

Call us – we are here to help

All work guaranteed

01373 430010 07795 143228 www.upvcrepairswiltshire.co.uk

the three horseshoes

Open daily from 10AM-11PM
serving delicious home cooked food
(12-3, 6-10 Mon-Sat. & all day Sun.)

Enjoy a refreshing drink in our beer garden
with spectacular views of Longleat and Cley Hill,
or indulge with one of our regular meal deals
by the warm open fire on a bitter winter's day.

We organise monthly events,
featuring live music, comedy + much more!

follow us on Facebook for more details



threehorseshoeschapmanslade



Chapmanslade Village Hall

Can be hired for all your functions:
parties, weddings, meetings, classes, etc

For hiring information, phone
Ken Davies 01373 832034 or email
kennethdavies1949@gmail.com

YOGA CLASSES

Corsley Reading Room

Tuesdays 6-7.30 pm

(other classes also available)

Jackie Jasper

01373 832301

yogawithjackiej@gmail.com



Open Door Warminster



Open Door Warminster is an unincorporated association regulated by the Charity Commission. We are a volunteer group supporting the residents of Warminster and the surrounding villages. We set up in 2020, determined to create opportunities for people who were feeling isolated or excluded from society, for whatever reason, to come together in a safe and encouraging environment and talk about how they feel and how they would like to feel.

We run four drop-in groups:

The Thursday **Friendship Chat Café** opens its doors every Thursday morning for anyone who is feeling lonely or isolated. It's a lively welcoming environment where everyone relaxes and enjoys a good chat over a cuppa and some cake!

The Chat Café occasionally welcomes Ashley from Victim Support. She is happy to discuss issues privately, so if you require her assistance, please let us know.

And we do it all over again each Monday evening from 7pm with the **Du Soir gathering!** If you have priorities during the day that prevent you from benefiting from our other groups, then this is the one for you!

On the first and third Friday of the month is the **Cancer Support Café** – open to anyone personally affected by cancer or supporting a loved one through it. Our volunteers all have

lived experience of cancer and are happy to help you talk through yours.

At the Cancer Support Café on 2nd February, we will welcome Liina, a Nurse Facilitator for Personalised Care for cancer patients.

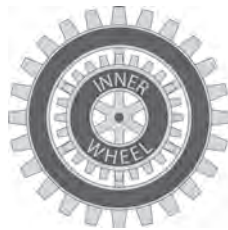
And on 15th March, Karen, a Macmillan Welfare Advisor, will be available to help guest directly affected by cancer with any issues relating to grants or benefits.

On the second and fourth Friday of each month we have the **Grief Support Café**. Grief is something everyone will experience. Our volunteer chatters will help you work through the feelings that grief brings to the surface - while they can't take away the pain, they will try to help you live through it.

The morning Chat Cafés run from 10 am to 12 noon. The evening group opens at 7 pm and is buzzing until 8.30 pm! All are held at The Athenaeum Centre, 18 – 20 High Street, Warminster, BA12 9AE. Each group is a drop-in when you want, and there is no charge for refreshments or company!

Volunteers – we would appreciate extra helpers willing to chat and sit with our visitors. Please call us for an informal chat or visit a Café to find out for yourself what we do while enjoying a cup of tea or coffee.

For more information visit our website at <https://opendoorwarminster.org/>



Frome Inner Wheel

**Come and join our annual
'Soup and Puds'**

**12 noon, Saturday 17th
February**

**Chapmanslade Village Hall
(BA13 4ET)**

£10 per person

**Proceeds will go to the Book Bus
and other IW international charities**



**Shake off those pounds and
dance yourself fit.**

Chapmanslade Village Hall
Monday 7.30pm - 8.30pm

Longbridge Deverill Village Hall
Thursday 7pm - 8pm

For all levels of fitness and
NO experience needed.

For more information please contact
Amy 07830 119032



Local Electrician

All Domestic and Commercial Work Undertaken
NAPIT approved Part "P" registered installer
Electrical Testing and Thermal Image reports
Electric Vehicle Charger Points installed

www.fushi-electrical.co.uk

Call us on: 01749 850769

Email: enquiries@fushi-electrical.co.uk



Unit 7 The Old Timber Yard, Trudoxhill BA11 5DG

BUSY BEES PRE-SCHOOL SPACES AVAILABLE FOR SEPTEMBER

- Term-time only 8am to 5pm,
Monday to Friday
- 2-4 year-olds
- Government funded hours for
2, 3 and 4 year-olds



Busy Bees Pre-School
High Street, Chapmanslade, BA13 4AN
Kelly Martin 07749 257608

busybeespre-school@hotmail.co.uk

OFSTED Reg:145873

Charity No:298660

For your
Heating Oil Supplies
contact

KINCH FUELS

at their
local depot in
Devizes, Wiltshire

Telephone 01380 727102

*The company you and
your home will warm to*

Happy Hounds

DOG WALKING WITH MELANIE LUCAS

Woodland Retreat

Our woodland retreat is set in an acre
of woodland. An exclusive safe, secure,
natural and tranquil space for dogs and
their owners to use – supporting both
physical needs and wellbeing

happyhounds.life • 07867 798035
Chapmanslade



CHRIS SEVIOUR
Building Services

07894 708949

cmseviour@gmail.com

Roofing, Loft conversions,
Extensions, Plastering,
Natural stonework

Kevin O'Mahony

Quality Painter and Decorator

Internal and external painting

Artexing

Wallpapering

Coving

Hand painted kitchen units

07724 349447 or 01985 301197

email kevo7743@googlemail.com

www.thewarminsterpainter.co.uk



Installation and repair of:
Digital Freeview TV aerials

Sky and Freesat satellite dishes

CCTV systems

Wireless networking

Mob: 07825 812955

Tel: 01985 220247

info@ktsystems.co.uk

www.ktsystems.co.uk

Cornwall

6 bedroom holiday house

Sleeps 12

Private access to beach

Dogs allowed



[www.classic.co.uk/holiday-cottage/
desc-2181.html](http://www.classic.co.uk/holiday-cottage/desc-2181.html)

Please follow the link for
details and availability

Contact Sandy Parrish 832522 for
'private' booking

Steve Dayman-Johns

Driving Instructor

Condensed Courses and

Gift Vouchers available

email stevekdj@gmail.com



Tel 01373 865422 - Mob 07730 445648



**THE
SPRUCE**
LOOK GOOD • FEEL GOOD

Hair and Beauty Salon

Therapy rooms & Hair Stations
Available for rent at great prices

Email: enquiries@the-spruce.co.uk

Or Call Linda on: 07971 950735



More information at: Instagram: [@thesprucetrudoxhill](https://www.instagram.com/thesprucetrudoxhill) - Facebook: The Spruce Healthcare & Beauty

Corsley Tennis Club News



Juniors

On Sunday, 7th January, Corsley Tennis Club sent four juniors to take part in a Wiltshire LTA Talent ID Fun Camp at the Delta Tennis Centre in Swindon, attended by around 100 other youngsters from across the county. The aim of the day, as outlined by the Wiltshire performance co-ordinator, was not to identify 'complete players' who can do many things on court, but for children who show a good interest in tennis with running, throwing and hitting skills.

A prompt 10 am arrival with racquets in-hand and smiles all round, the children were whisked away to the indoor courts (that were still absolutely freezing) for a much-needed warm-up and then two hours of tennis-based drills and activities as their parents watched on.

Despite the freezing indoor temperatures, coats and jumpers were soon stripped-off as the children took part, with the 'Corsley Four' showing everyone just how it's done... with a smile!

At the end of the two hours, the Corsley Four had certainly earned their lunch and their parents were greeted with a lot of enthusiasm.

This was an absolutely fantastic opportunity for the children and really opened their (and the parents') eyes to a new

experience – playing indoors and with top class coaches.

Talking of top coaches, a special mention must go out to our very own coach, Martin, who gave the Corsley Four this amazing opportunity.

Level 1 Coach

We are delighted to announce that Yasmin has passed her Level 1 and is about to embark on Level 2, congratulations!

Tennis Leaders

Under the watchful eye of our coach Martin, all three young adults have completed their course so congratulations to Mimi, Frank and Ruby.

Adult news

Thank you to the Cross Keys for hosting the AGM. We reflected on a successful 2023 and planning for 2024. We are on the lookout for a treasurer and secretary to join the committee, contact us through the website for more information. As we emerge into spring

more events, coaching will be taking place; follow us on FaceBook www.facebook.com/corsleytennis and our website for updates and dates <https://clubspark.lta.org.uk/CorsleyTennisClub>



QUIZ NIGHT

RAISING FUNDS FOR

WARMINSTER GROUP RDA

BASED AT THE WARMINSTER SADDLE CLUB

**Test your Knowledge with Questions on :-
General Knowledge, Individual Subjects,
Music & More**

**Thursday
8 February 2024**

**The
Conservative Club,
Prestbury Drive,
Warminster, BA12 9LB**

**Advanced Booking Only
Max 4 People per Table**

**To Book, call :-
Ron Dawson : 01985 840638**

**Starts : 7.45 pm.
(Doors Open : 7 pm)**

**ENTRY : £8
per Person (includes
Interval Sandwich Platter)**

**PRIZE
For each member of the
Winning Team**

**RAFFLE
Donations of Prizes
for the
Interval Draw
will be very welcome**



Warminster RDA is a Registered Charity, No : 1074275
Affiliated to the Riding For The Disabled Association.

ALLSOP CARPETS & FLOORING

DOMESTIC ♦ COMMERCIAL ♦ INDUSTRIAL

Christchurch Street West, Frome BA11 1EB

TEL: 01373 463866 MOBILE: 07887 953014

www.allsopcarpets.co.uk

KEYVOLUTION

Locksmith and
Carpentry Services
serving the Wiltshire Area

Warminster based company offering locksmith and carpentry.
Police cleared, reliable and honest service.
Any other quote beaten.

- BS3621 lock upgrades for house insurance approval
- Garage doors, locks and running gear
- Lock repairs – specialising in Chubb mortice locks
- Upvc double-glazed door and window locks fitted – even old ones!
- Door or window locks opened destructively or non-destructively (indemnity required for these services)
- Digital code locks supplied and fitted
- All types of carpentry work – mostly 2nd fix and maintenance

Check out my website

www.keyvolution.co.uk



or call Ben on 07748 214799 or 01985 219799



COMPUTER PROBLEMS?

01373 812804

Email
Advice for new users
Anti-virus defence
Web sites
Custom programming

Networks - home & office
Home tuition
Web access
Privacy & security
Repairs

www.technojeeves.com

info@technojeeves.com

candlelightcare

A family run and owned company offering domiciliary and live-in care to keep you safe and independent within your own home, as and when you need it.

Call 01225 776000

Covering Dorset, Somerset, Wiltshire and East Sussex.

www.candlelightcare.co.uk

3 Manor Farm Offices | Corsley | Wiltshire | BA12 7QE



BARTERS PLANT CENTRE

'Passionate about Plants'

Shrubs • Perennials • Trees • Roses • Conifers
Climbers • Fruit Trees • Hedging • Soft Fruit • Seeds
Bulbs • Basket Plants • Bedding • Vegetable Plants
National Garden Gift Vouchers

www.barters.co.uk



**Barter's Plant Centre
open 7 days a week**

**Monday – Saturday 9am – 4.30pm
Sunday 10am – 4pm**

**01373 832694 or email: retail@barters.co.uk
www.barters.co.uk**



Chloe Coulson AVON

representative in Warminster and Corsley
Please text me on **07591 080237**
if you are interested

Vaccinations, flea,
lungworm and
seasonal tick
prevention ... plus
so much more!

Garston
Veterinary Group

25%
Minimum
Savings



Spread the cost of your pet's
preventative healthcare into
affordable monthly payments



Cats £13.00
per month

Dogs from £13.50
per month *

*please contact one of the surgeries for specific prices
for your dog. Prices are based on adult weight.

wellness@garstonvets.co.uk

www.garstonvets.co.uk



Hypnotherapy

If you need help with:

Anxiety
Depression
Phobias (such as flying or spiders)
Panic attacks
Relaxation
Weight management
Smoking cessation
Natural childbirth
Confidence
Public speaking
Exam nerves
and much, much more...

Call ANJI HOLLAND on
07944 647 978 / 01373 832 898
to enquire or just for a chat

www.hollandhypnotherapy.com

With practices in Chapmanslade and Bath

I am a member of the National Council for Hypnotherapists
and am bound by their code of practice and ethics



HEYWOOD HOUSE

WESTBURY



**SPACE TO WORK AND MEET
SPACE TO ENJOY**

Workspace

Meeting Rooms

Café

Event Space

Tel: 01373 486 800 | Email: landlord@heywoodhouse.com

Heywood House, Heywood, Westbury, Wiltshire, BA13 4NA

www.heywoodhouse.com

Corsley WI

January news

Patricia Sharrocks rounds up the January meeting



Our January meeting was held in the Reading Room and our speaker was Tina Fitwell who was a paintings specialist and conservator for the National Trust. The National Trust looks after over 13,000 paintings in 200 properties. Tina was a knowledgeable and engaging speaker whose enthusiasm for her subject was infectious. Her talk focussed on a portrait of Rembrandt which hangs in the dining room at Buckland Abbey in Devon.

This painting was gifted to the National Trust in 2010. It had been examined by experts in 1968 and was believed to be from 'the school of Rembrandt' which means it was painted by one of Rembrandt's students. In 2013 Ernst van de Wetering, one of the world's leading experts on Rembrandt, suggested that it could have been painted by the master himself. There had been considerable advances in the techniques used for examining the painting and it was sent to the Hamilton Kerr Institute in Cambridge which carries out technical analysis and curatorial research.

The painting was done on a panel of poplar wood rather than oak: oak panels can help to date a painting using a method called dendrochronology or tree ring dating. It was cleaned, layers of yellow varnish were removed, and this revealed the brushstrokes, the colours and textures underneath which meant that experts could compare it with other confirmed Rembrandts.

When the painting was x-rayed it was possible to see changes which the artist had made; it seems that the artist had originally sketched an arm across the chest but later changed his mind. This indicated it was an original rather than a copy.

Minute samples of the paint were examined to identify the pigments used and to compare them with other known Rembrandt paintings. Infrared analysis was then used, which penetrates the layers of paint and can sometimes reveal initial sketches that were made. In this painting it seems the artist originally sketched a larger hat!

After eight months of such detailed analysis, investigations into the signature, and comparisons with authenticated Rembrandts it was confirmed that this painting was not done by a student or a copy, but painted by Rembrandt himself. It is indeed a self-portrait, not a fake – and worth a fortune!

As usual we rounded off a lovely evening with coffee and cake and caught up with each others' news. We will be back in the Reading Room on February 8th when Garston Vets will tell us about their 'Green Vets Award'.

Guests are welcome to join us for the evening (£3) and if you would like more information about this meeting, or about Corsley WI, please contact Alice: on 07989 339632 or email alicecambridge40@gmail.com





E G MARTIN LTD

Heating Oil Distributors

Telephone 01373 822784

Victory Road, West Wiltshire Trading Estate
Westbury, Wiltshire, BA13 4JL

WESTERN SKIP HIRE

Telephone 01373 813132

Victory Road, West Wiltshire Trading Estate
Westbury, Wiltshire, BA13 4JL



Domestic Appliance Sales and Repair Service

Domesticare

21 Keyford, Frome

www.domesticarefrome.co.uk



01373 467351

Ski Apartment – French Alps

Ski in/ski out – sleeps 6

Well equipped – immaculate condition

For more information or to book online visit:

w. www.ski-les-cimes.co.uk

f. facebook.com/ski.les.cimes

e. lesleygolledge@gmail.com

t. 01373 832533

TEA & sympathy

Considerate catering at a difficult time

*All our food is homemade, we provide delicious teas, sandwiches and cakes
through to more elaborate options.*

We offer a truly bespoke, caring and professional service.



Telephone Kim Clark on 01373 832151 or 07843 056916

e-mail kim@teaandsympathy.uk.com

www.teaandsympathy.uk.com

Six Open Doors

Dear friends,

It only seems like two minutes since we were celebrating Christmas -God with us, and now we are preparing ourselves for Easter! Why is it that we move so quickly from birth to death? I am sure that you will have other questions too!

As I write this we are still in the season of Epiphany, like the Magi and the shepherds we have been to the scene of the nativity, we have received the invitation to accept the love and light of Christ into our own hearts and now we move away and turn to face the world. What do we do, how will we do it, who will we meet? In the church calendar we quickly move from the miraculous story and events around Christs birth, we recall key moments from Jesus' ministry establishing his Kingship and then we approach the miraculous story of Jesus death and resurrection. And because of these things -we have a story -the greatest story ever told to share with others. The story of how God so loved the world that he sent us his Son so that we could know just how much! During Advent we were encouraged to hanker down, to reflect along with the forebearers of our faith Abraham and Sarah, the prophets Isaiah and John the Baptist, and the imminence of Jesus' birth with Mary. Through Christmas we open our homes and hearts to the wonder of Christ with us, slowly through Epiphany we turn to examine the world and we see the need for the light of Christ to reach into every corner. As we approach Lent let us examine the life of Jesus and learn from his example about how we turn up our own lights and allow them to shine brightly with Christ. To help us do that we will be offering a Lent course called Life Attitudes by Robert Warren. This is a great opportunity to examine and discuss the teachings of Christ from his most famous sermon on the mount, the Beatitudes. (Course books cost around £7.99, we hope to make a bulk order.)

I look forward to meeting you and getting to know you as we explore together the relevance of the beatitudes for today's world. For more details please see Lent Course 2024 (page 23)

Ash Wednesday service with imposition of Ashes 14th February at 6pm Holy Trinity Dilton Marsh - you are most welcome to join this service or others around the area.

With every blessing, Revd Caroline
01373 596104

February Church Diary

4th February: 2nd before Lent

8 am Holy Communion Kingston

10 am Eucharist Corsley

10 am Morning Worship Longbridge Deverill



11th February: 3rd before Lent

10 am Praise and Worship Chapmanslade

10 am Eucharist Kingston



14th February: Ash Wednesday

6 pm Holy Trinity Church Dilton Marsh



18th February: 1st Sunday of Lent

11 am Matins Corsley

10 am Eucharist Brixton



25th February: 2nd Sunday of Lent

10 am Eucharist Chapmanslade

10 am Eucharist Longbridge



3rd March : 3rd Sunday of Lent

8 am Holy Communion Kingston

10 am Eucharist Corsley

10 am Morning Worship Longbridge

Church and Community Events in February

Crafternoons

Wednesday 14th & Wednesday 28th February, 3 pm – 5 pm, Three Horseshoes, Chapmanslade

Community Church Coffee Morning

Thursday 15th February, 10 am – 12 noon, Three Horseshoes, Chapmanslade

Lite Bites Soup Lunch

Wednesday 28th February from 12.30 pm, Corsley Reading Rooms

Lent Course 2024

This year at Dilton Marsh we will be studying a course called Life Attitudes by Robert Warren and Sue Mayfield. This course will help us to unlock the mysteries behind Jesus' sermon on the mount. The beatitudes are often talked about as being the *raison d'être* for Jesus' presence on earth, others have called it his manifesto – a very modern term! Some people think these are really tricky statements, others find them inspirational, yet others find them baffling. Come and share your thoughts as we seek to unpack some of the deeper meaning behind Jesus' words as we seek to embody them in our daily walk with Christ.

We will be sharing times and venues to offer both daytime and evening sessions. You are welcome to choose the venue and/or time which you find most convenient. The course will run daytime in Chapmanslade, kindly hosted by Ian and Janet Buick, beginning with coffee at 10.30 am, and at Dilton Marsh beginning with supper at 6 pm To book your place, please register your interest (and dietary needs) with Sally at DiltonMarshPCCSecretary@Whtministry.org.uk

Dates for your Diary

Ash Wednesday – 14th February

Lent Course dates – (Wednesdays) 21st, 28th February, 6th, 13th, 20th, March.

Church and Community Coffee Mornings

Third Thursday of each month

10 am to 12 noon

The Three Horseshoes, Chapmanslade

Parish Contacts for Corsley and Chapmanslade

Rural Dean

Rev Caroline Husband
teamvicar@whtministry.org.uk

First contact for anything related to Corsley and Chapmanslade please contact Sue Fear at suefear@gmail.com

Lay Pastoral Assistants	Barbara Hughes Claire Tanner	01373 832273 01985 218099
Pastoral Visitor	Barbara Hughes	01373 832273
Churchwardens St Margaret's	Shane MacKean	01373 832506 07763 915620
St Philip & St James'	Ian Buick	01373 832318
Deputy Churchwardens St Margaret's St Philip & St James'	Vacancy Janet Aylesbury	01373 832752
PCC Secretary	Sue Fear	01373 832074
PCC Treasurer	Ian and Janet Buick	01373 832318
Benefice Administrator	Vacancy	
Tower Captain	Michael Attenborough	01373 832777
Electoral Roll	Di Britten	01373 832515
After Alpha Home Group	Trudi Hopkinson	01373 832393
Time To Think Home Group	Renee Cole	01373 839008
Lite Bites Lunches	Maureen Willcox	01373 832171
Benefice Webmaster	Mike Palmer	mjp.mikepalmer@gmail.com

Copy for Six Open Doors should be sent to Di Britten at dianabritten69@gmail.com
Please contact Di if you would like to receive weekly news of Church events and activities

Little Cuckoo's Pre-School

Lyes Green, Corsley, BA12 7QH

Corsley village pre-school, set in the heart of our beautiful countryside with a vast outdoor space.

Dedicated for children aged 2-5 years

Monday-Friday during term time

OFSTED rating '**Outstanding**' February 2023!

Government funding for eligible 2, 3 & 4 years



Please contact Hayley McMahon or Sam Keller on 07925 549763

find us on Facebook or visit www.littlecuckoos.co.uk

Registered Charity Number 1064800

Corsley Tennis Club



New members welcome –
all ages, all abilities

Three hard courts available all year

Weekly junior coaching available
Low subscriptions

www.clubspark.lta.org.uk/
CorsleyTennisClub

Forget-me-not



• GARDENING SERVICE •



Weeding, pruning, planting,
fence painting, etc

01373 464416

07890 850465

Mobile Foot Clinic



Jana Twinney

Dip FH MCFHP MAFHP

Long, Thickened, Ingrown or Fungal Nails,
Callus, Corns, Cracked Heels,
Athlete's Foot + Diabetic Foot Care,
Massage and Foot Care Advice

**Registered member of the British Association
of Foot Health Professionals**

Fully insured and experienced
Based in Frome and surrounding area

Please phone or email for an appointment

jana.twinney@gmail.com
07922 679 638

Paul Ledbury

Quality Painting and Decorating

30 years experience

**INTERIOR AND EXTERIOR
GENERAL MAINTENANCE**

5 Hampshire Gardens
Westbury, Wiltshire
BA13 3EX

Telephone 01373 858163
Mobile 07976 242045



We care. And so could you.

**Now hiring Hospice at Home carers
- especially seeking night shifts.**

Join our supported and valued team providing end of life care, and have the time to give back to your community.

- Full training given, just a caring attitude required
- Competitive salary and mileage
- 35 days holiday allowance (increasing with service)
- Transfer NHS benefits (where applicable)

Visit careers.dorothyhouse.org.uk to apply

Corsley Parish Council

Parish Council Briefing

John Willcox, rounds up the PC's recent activities

Since the last report of the Parish Council, the Council has met on two occasions; the 6th November 2023 and the 8th January 2024.

At these meetings, three planning applications were considered; a retrospective change of use from residential and agricultural to dog boarding; day care, grooming, storage and associated car parking at Malthouse Farm. An application for internal alterations to kitchen, utility room and pantry at Sturford Mead. Finally, some adaptation and demolition of existing structures, installation of new animal enclosure fencing, associated works at Longleat Safari and Adventure Park.

The Parish Council agreed that they would have no objection to any of these applications albeit they registered their disappointment at the receipt of another retrospective application for a 'development' in the village that obviously should have been the subject of an application at the outset.

Finance

Following the September meeting where the precept had been discussed, a draft budget had been prepared for 2024/2025 and following detailed discussion it was unanimously agreed that the precept requested for 2024/2025 should be the same as had been requested for the current financial year (2023/2024). The budget contains provision for, amongst other demands, the PC to continue the work being done on improving the rights of way network throughout the Parish, to provide the matching funding for

the various street scene improvements that are being sought, to fund a start on the Draft Emergency Plan for the parish that has been considered and to provide some direct support to the Corsey Reading Room..

Streetscene

The PC continues to be vocal both about the various improvements that are being sought and the maintenance issues that need to be addressed. The PC are grateful for the support provided by our County Councillor, Bill Parks who always works hard on our behalf, but this does not stop us shouting our corner when the need arises whilst at the same time recognising the needs of the rest of area for support too

The Three Villages Group met on the 15th December 2023 and it was felt to be the most positive meeting to date.

Villagers will have become aware that the recent extreme weather has lead to a number of issues with flooding and land slips on the southern side of the A362. Thanks are due to staff of the Longleat Estate who have cleared these, sometimes within hours of them being reported. It was agreed that the PC should try and convene a meeting with both Longleat and Wiltshire Council to discuss the increasing problems of landslip and flooding due to climate change. We have been very lucky in Corsley that we have not suffered house flooding, unlike other parishes, but we still need to work on being more prepared for future events so that we do not see this moving forward.

As previously reported, the agreement

regarding the Wild Flower Meadow is due for renewal . At the September meeting it was agreed in principle that the agreement should be renewed but it was felt by both parties that the agreement should be revisited to ensure that it was fit for purpose for another period of five years, or for however long was felt appropriate. The Vice Chair of the PC agreed to lead a group to consider and thereafter make a recommendation to the PC. It was further agreed that a maintenance schedule for the remainder of the land making up the Old School Playing Field (the orchard) should be drawn up, which has been done.

The Parish Council has been reviewing its procedures and practices and has agreed a number of additions to the way it operates; including a formal complaints procedure and a more formal way of running our meetings.

Next meeting

The next scheduled meeting of the Parish Council is Monday 11th March. We welcome all visitors!

Meetings to be held in the Lower Room at Corsley Reading Room and will begin at 7 pm

John Willcox
Parish Council Clerk

Hazardous Hedges

Do you know your responsibilities to keep hedges cut back on roadsides?

Given that the majority of discussions we seem to have at the Corsley Parish Council meetings are about hedges growing into roads and causing damage to cars I thought it would be worthwhile putting an article in The Bridge for everyone to understand their responsibilities as residents of Corsley. Councillor David Ball has taken some excellent photos of good and bad examples.

Overgrown hedges next to footpaths and roads pose a real hazard to people who are disabled or who are visually impaired and young children or other pedestrians who risk injury or damage to their faces or clothing from thorns and branches. If the pavement (footway) is narrow or the obstruction is excessive, they may be forced into the road. This is particularly dangerous for wheelchair users or for people pushing a pram or buggy and, in Corsley's case, for horse riders, cyclists and dog walkers. On junctions and bends overgrown hedges may obstruct sight lines and the clear view of motorists.

We receive a lot of messages from people

throughout the village about overgrown hedges and the difficulties in getting down the lanes asking if we or Wiltshire Council are going to sort it out; so we thought we would let you know exactly what the rules are and who needs to do what.

Firstly, it is the land owners or occupiers responsibility to manage their hedges. This includes anyone renting a property. Even if your tenancy agreement states that the landlord is responsible, you would be required to contact him/her and ensure that pruning is carried out as soon as possible. You will see many farmers currently trimming back hedges. It is normal for hedges to be cut back during the winter so it does not interfere with nesting birds.

However, frustratingly, hedges grow most during the summer when you are typically not allowed to prune them because of nesting birds. However you are allowed to cut the hedge during spring and summer if the hedge has grown vigorously and overhangs a highway, road or footpath over which there is a public or private right of way. In this case, you should check for nesting birds then cut

back until you achieve the required visibility.

If you don't maintain your hedge you may get a letter from the Council stating that it's an offence under the Highways Act 1980 to allow trees, hedges, shrubs and so on to obstruct the highway. The Council will, after an initial informal request, serve a 21-day notice on you, the occupier, to cut back the offending vegetation. If you do not comply with the notice, the Council may carry out the work itself and recover its costs in doing so from you, through the courts if necessary.

The big question is always how far back does one cut the hedge. The answer is, enough to allow good visibility to secure use of the path/highway.

Here are a few examples of good and bad hedge maintenance which we hope will help.



Hedge overhanging road and impairing visibility around the corner



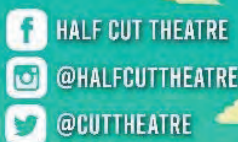
Hedge cut back nicely to the edge of the road, excellent visibility for users



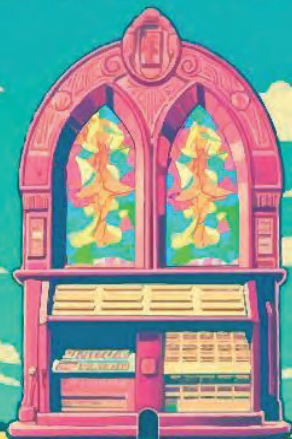
Branches hanging in the middle of the road impairing visibility and potentially scratching cars, vans, etc

LCUT
HALF CUT THEATRE

THE CANTERBURY TALES



TOURING
SPRING
2024



7pm, Saturday 23rd March
In St. Margaret's Church, Corsley
BA12 7QE

Adults £17 under 13yrs £10
Tickets and more information
claire@manorfarmcorsley.com

Bar

**In aid of Friends of
St. Margaret's Church, Corsley**

Chapmanslade Parish Council

Parish Council Briefing

Councillor Tim Humphreys reports on the PC's January meeting

The Parish Council met at the village hall on 11th January with 1 member of the public present plus our local councillor Bill Parks.

Councillor Holihead as Chair wished to acknowledge with thanks the specific contribution the council receives on an ongoing basis by our local Councillor Bill Parks, which is very much appreciated.

Planning applications

There were no applications to discuss, though Councillor Parks did advise a decision on the further prospective development at Barbers Farm was still awaited.

Emergency Plan

Councillor Curtis reported development work on an earlier Chapmanslade draft document is continuing, with example resilience plans being evaluated as received from neighbour councils. There have been no events of particular note within the Parish since COVID-19. Intention is for the completed draft to be tabled at the March meeting.

Weight limit

Councillor Holihead reported on a positive three-villages meeting on 15th December, with the new Cabinet Member (Councillor Thomas) supporting the PC's long-standing objective to reduce the weight limit along the A3098 to 7.5 tonnes. Councillor Thomas has instructed her staff to review historic information to determine the extent of the ongoing problem through the three villages (Chapmanslade, Corsley and Maiden Bradley)

and appears willing to consider the case for Chapmanslade on an individual basis. The feeling is that, finally, momentum is picking up for a resolution to this long standing issue

Parish Plan

A refresh of the original 2019 document is being prepared. In regard to one specific initiative, it remains uncertain whether a Neighbourhood Plan would offer any benefit to our Parish given the conclusion discussed within the draft Wiltshire Local Plan advising no further residual housing need has been identified within the village until 2037. Councillor Morland discussed in context with the latest update to the National Planning Policy Framework (NPPF) which introduces various reforms to housing delivery and notably provides greater protection of development boundaries.

Taking Action on School Journeys (TAOSJ)

Following development of a School Travel Plan reviewing ongoing issues for both pedestrian and car journeys within the immediate vicinity of the school, Wiltshire Council has prepared a report proposing a number of allowable improvements, based upon a detailed survey carried out in mid 2023. This report has been jointly accepted by the PC and the school governors as being a pragmatic solution, and a meeting has been scheduled for 6.30 pm at the Village Hall on 8th February immediately prior to the

next PC meeting, to offer the community an opportunity to review and provide feedback. The findings of the 2023 travel survey are available at the link www.chapmanslade.wilts.sch.uk/wp-content/uploads/2024/01/School-Journeys-Report6-FINAL-with-appendices.pdf It is hoped this consultation will be well supported, as funding is already in place to carry out the proposed work from the Safe Travel to School budget at Wiltshire Council.

Finance

The CIL fund, managed through the PC, currently stands at £40,969 and the Section 106 fund at £11,238 (for which the formal agreement with Wiltshire Council has now been signed and returned by the PC). As a reminder, these sums have very primarily arisen from the Honey Glade development at Barbers Farm.

A grant funding application protocol has been prepared by the Parish Plan Steering Group, for acceptance by the PC. A few

projects have already been identified as compliant with the necessary funding criteria.

The PC discussed other financial matters including setting of the budget and precept for 2024/2025, an agreement for the Clerk to purchase a new laptop, and for the PC to expend a small sum to provide for safety lines and road signage to the Village Hall access off the A3098, the cost of which will be primarily borne by Wiltshire Council under the Highways and Footpath improvement scheme (LHFIG).

Next meeting

The next PC meeting is scheduled for 7.30 pm on 8th February at the Village Hall, with the earlier public meeting scheduled at 6.30 pm.

Meeting minutes

Minutes of the meetings can be found on the Parish Council website www.chapmansladepc.org.uk

*Tim Humphreys
Parish Councillor*

All for Maridi Annual Quiz

A date for your diary!

Thanks to quiz masters Bob and Bob there will be a quiz in support of our Maridi, South Sudan Fund. For those who don't know! – Maridi is in the South West of South Sudan, Africa, in the area called Western Equatoria and is the allocated Anglican Diocese that we, in the Heytesbury Deanery group of Churches, are linked with. The quiz is our biggest fundraiser of the year and we value everyone who comes along and supports us.

The quiz is on Saturday 23rd March, 7.45pm start (doors open at 7pm) at Warminster Conservative Club. Tickets cost £12 each and include a fish and chip supper,

please let us know if you have any dietary needs. Teams may be up to six in number.

Payment for tickets is at time of booking and may be done through me after 4th March or directly through the club – 01985 217895
Friday, Saturday, Sunday 12 noon to 3pm;
Tuesday, Wednesday, Thursday 7.30 to 10 pm;
Friday, Saturday 7 pm to 11 pm;
Sunday 7pm to 10.30 pm.

There will be a raffle and the bar will be open.

We look forward to seeing you there.

*Revd Gay Maynard
01373 832490
revgmaynard@gmail.com*

Deedle's Pets



SERVICES

Dog Grooming
Dog Walking

Pet Sitting
Pet Supplies
Natural dog treats & pet accessories

Emmi Pet
Teeth Cleaning

Email: deedespets@gmail.com

Phone: 07830066030

www.deedespets.com Shop
@Deedle's Pets Social

Contact

OFF THE HIGH STREET HAIRDRESSING

UNISEX HAIR SALON
OPENING IN APRIL 2022! IN THE VILLAGE OF
CHAPMANSLADE.

AMY PRATT WILL BE MOVING HER TALENTED SELF
AND SALON, PREVIOUSLY TREVOR AND JON IN
TROWBRIDGE TO THE LOVELY VILLAGE. AMY HAS
OVER 20 YEARS OF EXPERIENCE.

FOR ALL NEW ENQUIRIES PLEASE CALL AMY ON
07740799341

THE NEW SALON ADDRESS IS 2 PEDLARS GROVE,
CHAPMANSLADE, BA13 4AZ.



Magical Maids

Professional cleaning services specialising in
Office and Domestic Cleaning
Holiday Lets · End of Tenancy

Sam 07581 896600

psmagicalmaidscleaningservice@gmail.com

JESSICA CHURCH

Chartered Physiotherapist

Your local physio in
Corsley Heath.

www.jessicachurchphysio.co.uk

physio@jesschurch.co.uk

07711256662



hcupc
registered
www.hcupc-uk.org

Do you need a plumber? Call...



Paul Antell Plumbing

07890 366832

01373 467427

Professional, reliable, friendly and local
paulantellplumbing@talktalk.net
www.paulantellplumbing.co.uk

Advertise here for £24 per year

Seasoned Logs

Hardwood, softwood, barn dried, kiln dried

Kindling and stacking service

All with free local delivery

Tel/text Garry on 07801 179917

Standard load £160 for 1.6m³ or 700kg

All our timber is ethically sourced from local woodland
and is fully seasoned before delivery

Please check out

“woodlandworks”

on Facebook or Instagram

Mrs B's Caring Catering Ltd

Celebration parties

Funerals

Weddings

Finger buffets

Boxed lunches

Lunches

Dinners

**with waited, buffet or
delivery only service**

01373 452593

office@MrsBsCaringCatering.co.uk

www.MrsBsCaringCatering.co.uk

Unit B1 Southgate, Commerce Park, Frome, Somerset BA11 2RY



Sharon's Foot Clinic

SAC Dip FHPT SAC Dip FHPP



Fully insured and highly trained

For the professional treatment of:
Corns · Callus · Cracked Heels
Athletes Foot · Fungal Infections
Thickened Nails · In-growing Nails
Diabetic Foot Care · Verrucas
Nail Cutting · Nail Reconstruction

Contact Sharon on

01373 836734 or 07728 200402

Clinic appointments at

12 Sunny Hill, Nunney, BA11 4ND

Home visits also available

Wonderful Walks

Delightful Devizes



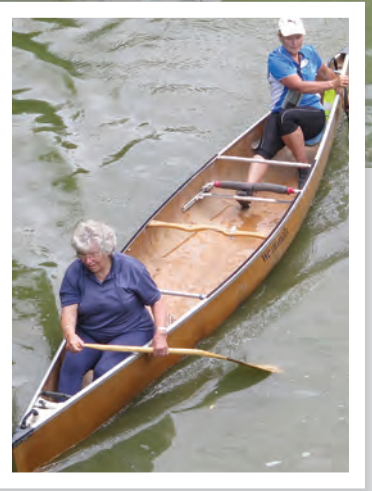
Kennet and Avon Canal

My journey to Devizes on the 55 Beeline bus (Thursday only) feels like a tour, travelling along the Wylde Valley and across Salisbury Plain. If you're driving instead, use the car park behind the Shambles Market and walk through to the Market Place; Queen Matilda granted the town a market charter in 1141, for supporting her in the war with King Stephen. Thursday is Market Day and busy, but turn right and walk, turning right again into Snuff Street. At the end of that, cross New Park Street on the crossing and go left then right into Couch Lane, once the town's 'common land' for grazing animals. If you need facilities and a break (I do after an hour's bus travel!) pop into the Black Dog Café, along on the right, and try their white chocolate and raspberry muffins!

Afterwards, leave and turn right, back onto Couch Lane, passing the hospital entrance

before taking the footpath right, alongside the Kennet and Avon canal; you may

see canoeists practicing their skills here! At the next road bridge, leave the footpath and turn right across the bridge; ahead of you should be the impressive gated entrance onto Quakers Walk, which I've learned nothing about yet. I love this area, a hard surface and no mud, the shade of trees, plus open fields as well. On your right, you'll see Quakers Walk Meadows, with information boards to study. Beyond the meadow are new homes, while





You're back in Devizes proper, turning right onto busy Estcourt Street; when you see a large pond on the left, cross the road carefully. This pond is known as the Crammer and it's where the Wiltshire Moonrakers 'incident' happened. Local smugglers were taking their 'wares' along here one moonlit night, but saw excisemen approaching and dropped their booty into

the Crammer. When the lawmen had gone, they started fishing the goods out of the water – only to find the excisemen returned, asking them what they were doing. Quick-witted (near-genius!) thinking made them say they were fishing a round of cheese from the water and they tried raking out the full moon's reflection. The excisemen left, laughing...

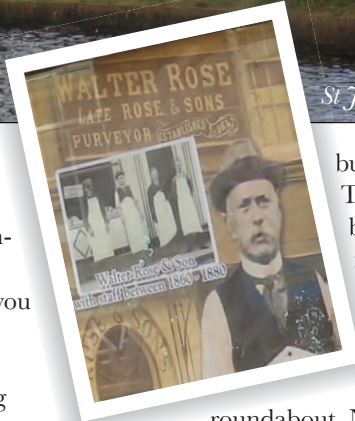
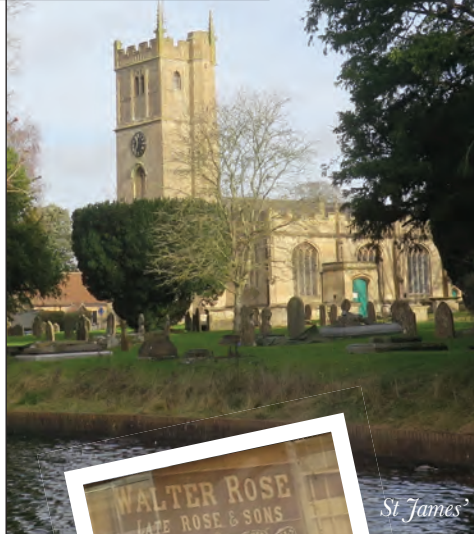
Walk beside the water and turn left on the footpath alongside the Crammer, leading to Church Walk. That goes left to St. James church,

but turn right instead, towards The Green. This open land was bought by the local corporation in 1899, along with its fair tolls; occasional fairs are still held here. The road curves round into Southbroom Road, so use that until you reach a busy

roundabout. Now go ahead into Sidmouth Street, once called Leg of Mutton Street, because the town's butchers were close by, though the street was renamed after Lord Sidmouth, once Devizes MP and Prime Minister. Walking along the left-hand side of

fields continue away to your left with footpaths to explore, if you're as nosy as me! For this walk though, go ahead until you meet a road and modern houses, though there are open fields beyond and a footpath, too. This leads to Devizes Millenium White Horse, unexplored to date; it needs a long spell of dry weather to make the mud path suitable and we need Spring for that!

Turn right here instead and walk through Roundway Park estate (where an old manor-cum-hospital was), going ahead for a good half-mile and more, until you emerge onto the A361, London Road. Turn right yet again and keep going. The style of housing makes a change from estate homes, until you reach fairly modern Wiltshire Police Headquarters, followed by Victorian housing. You'll use a canal bridge again, too, before seeing a roundabout ahead, with St. James' church (partly 15th century) beyond.



St James'



this road, you'll find an amazing shop window, filled with information, photos and newspaper cuttings on the local butchers' family, named Rose; the name is on several shops locally. Further along, Albion Place is an 18th/19th century terrace, with a 1950's statue on the balcony, plus a monument to the wool trade's influence on Devizes.



Devizes Books Limited is on this road. I bought a 'Yellow Map', laminated and useful in wet weather, along with a book of Wiltshire walks, the right size for my bum bag! Keep walking, into Maryport Street, and you'll reach pedestrianised The Brittox on your left, its name probably derived from 'Bretasche', Norman for a fortified gateway. This leads right, eventually, into the Market Place, with welcoming cafes here or in the Shambles Market covered building, as you will have walked three miles..!

Chapmanslade Motor Services

**Vehicle repair
and servicing**

**Brake
specialist**

**MOT preparation
and repairs**



**Batteries
Exhausts
Tyres**



Quality service at competitive rates

FREE ~ wheel balancing and tracking with new tyres

FREE ~ courtesy car

Electronic diagnostics available – most makes covered

Green Farm Industrial Estate, Chapmanslade

01373 832188 or 07711 256927





**01373
455911**

CLEANING & MAINTENANCE 2000 LTD

OUR SERVICES INCLUDE

- Domestic Cleaning
- Commercial Cleaning
- Upholstery Cleaning
 - Carpet Cleaning
- One off Spring Cleans
- Garden Maintenance
 - Home & Garden Clearance

 www.busybees2000.co.uk 
info@busybees2000.co.uk

**JOHN E S JONES
& SON LTD**

**GENERAL
BUILDER**



Carpentry, painting and
decorating, extensions, uPVC,
facias and gutters, fencing,
decking and patios

Please call

01373 832600

07795 177920

07810 646335

Rose Knight



Dog and cat
minding service

01373 464904

07773 435254

knight_rosemary@sky.com



ILES & VINCENT FUNERAL SERVICES

WARMINSTER'S ONLY INDEPENDENT FUNERAL DIRECTOR



Classic and traditional funeral ceremony, small and intimate service or no service at all with a direct cremation, we are here to help, guide and support you every step of the way with sensitivity, experience and empathy.

24 hour professional & caring service

The Cornmarket, Warminster, BA12 9BX

01985 220161 (24 hours)

info@ilesandvincentfuneralservices.co.uk

M W Garden Services

20+ years experience

A tailor made service for all types of garden maintenance

Insured and CBI's checked

mark22.weaver@mypostoffice.co.uk

Telephone 01373 832854

Mobile 07921 818452

JERRY RAYNER :
boiler maintenance :

01985 841461 or 07775 755981

FOR SERVICING AND BREAKDOWN
OF OIL BOILERS

also AGA and RAYBURN

- Competitive rates
- Friendly, helpful and efficient
- Call now for a quote

Wren House

Residence for the retired and elderly

Wren House in Warminster is a long-established, elegant retirement home, specialising in individual care in gracious surroundings. Having just thirteen rooms, each with a private bathroom, we are able to offer the ambience of a family home, together with caring staff and the facilities to enable our residents to enjoy their later years with dignity.

Wren House serves fresh, locally-sourced, home-cooked food. Residents enjoy a varied activity programme which includes a gardening club and our own choir.

Mrs Ellie Simmonds

Wren House Ltd, 32 Vicarage Street, Warminster, BA12 8JF

Telephone 01985 212578

wrenhousewarminster@hotmail.com

www.wrenhousewarminster.co.uk

Whitbourne Chapel

'The Heavens declare the Glory of God...'

Psalm 19 v1

The psalm of two books

I hope, as you read this, the dark, gloomy days of winter are coming to an end and the signs of spring are beginning to appear. Do we stop and listen to God speaking through His creation – whether it is in the beauty of flowers or the skies? Such beauty, order and variety does not happen by chance – it all comes from our designer God.

Psalm 19 is about two books. In the first book (vv. 1–6), God speaks to all of us through Creation ('general revelation'). It begins with the words The heavens declare the glory of God; the skies proclaim the work of his hands.

Yet, the psalmist knows that creation is not sufficient for a person to come into a living relationship with God. It requires another book. So, the second book that Psalm 19 speaks about is the law of the Lord (vv. 7–10). We can say that the law of the Lord is God's 'special revelation' and is shorthand for the whole Bible. It refreshes the soul, makes wise the simple, gives light to the eyes and warns us of the dangers of sin. The psalm anticipates the coming of the Lord Jesus Christ into this world to be the saviour of sinners.

Dr Emile Caillet, a French philosopher, who witnessed the horror of war in the World War I trenches, sought to find the answer to the big questions of life. He wanted 'a book

that would understand me'. He even tried to produce a book of his own but it never satisfied him. Then, one day, his wife gave him a copy of the Bible. He was amazed as he began to read the Bible, which he had never seen before. He wrote 'This was the Book that would understand me!' And as he read on through the Gospels, 'the One of whom they spoke, the One who spoke and acted in them, became alive to me.'

I trust that we will all enjoy a warm, sunny Spring, but above all that you will open the Bible and like that French doctor, will find that the Lord Jesus Christ comes alive to you through its pages.

John Hobson

Visiting preacher at Whitbourne Chapel

Hope for the New Year by Gloria and William Gaither.

God sent his Son, they called Him Jesus;
He came to love, heal and forgive;
He lived and died to buy my pardon,
An empty grave is there to prove my Saviour lives.

Because He lives, I can face tomorrow,
Because He lives, all fear is gone;
Because I know He holds the future,
And life is worth the living, just because He lives.

Please remember:

If you need help or simply someone to talk to, ring 07980 013685 and we'll do our best to help you. Otherwise, visit our website www.whitbournechapel.org.uk or google 'Whitbourne Baptist Chapel'.



Your Local Electrical Services

OVER
50
YEARS
Est. 1971

FAIRFIELD ELECTRICAL

The new name for Lawrence Fairfield Ltd

LIGHT, WARMTH, POWER & PROTECTION

Call or email now for a free quote

01373 464577

enquiries@fairfieldelectrical.co.uk

www.fairfieldelectrical.co.uk



allsorts OF FENCING

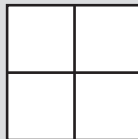
Your local Fencing Specialist

Stock Wire / Post and Rail / Close board
Decking / Patios / Gates / Sheds / Pergola

www.allsortsoffencing.com

01373 832339 / 07710 180551

Also: Topping of Fields and Paddocks



White Horse Windows Ltd

Windows, Doors,
Conservatories and more...

Local company, exceptional standards

10 year guarantee

*Windows Fascia & Guttering
Doors Conservatories*

CERTASS Registered

For a free quotation contact Ryan on

07909 441442 or 01373 302594

ryan@whitehorsewindows.com



KB Landscape

30 years in landscaping

Phone

01373 832371

Mobile

07951 297173

Kevin Brixey - for quality and experience

5 Red Cottages Corsley Warminster Wiltshire BA12 7PS

Landscaping
Patios and paths
Turfing and seeding
Brick and stone walling
Decking and pergolas
Block paving
Gravel drives
Pond work
Fencing

Corsley Reading Room

Your 'village hall'

Chairman, Hugh Deed, reports on the latest happenings at the hall



Coffee Mornings

Tuesday 6th February and every first Tuesday of the month. Please come and join us and meet others, pick up the local gossip or just put the world to rights!

Advance notice: We plan the 5th March coffee morning will include a few minutes of the Film Festival films to give a taster.

Corsley Film Festival

The dates of the public showings are now fixed for Fridays 23rd February and 8th March, doors open at 7pm, films start at 7.30 pm.

We hope these film showings will be opportunities for people to socialise as well as watch some interesting short movies. Please see the advert in this edition of The Bridge

for more details or go to our website. Online booking opens 1st February, tickets are £2 each. We plan to lay out the main room with tables and chairs rather than have a theatre format. Please buy in advance online as it helps us plan and reduces workload!

Booking the Reading Room

Please use the website form or email crrbookings@gmail.com. Corsley residents get a discount on our published prices! So please do use the Reading Rooms! Jamie and Charlie Owen are keen to help with your booking.

Trustees and supporters

We are always looking for new people to get involved and bring new ideas and energy to the management of the Reading Rooms. If you are interested in making 2024 the year you get involved, then please contact any of the existing members.

Other information

See website www.corsleyreadingroom.org.uk for up-to-date information and more.

Hugh Deed

Chairman of Management Committee

Chairman@corsleyreadingroom.org.uk

01373 832897

Trustees

Hugh Deed, Chris de Groot, Claire Firman-Ford, Liz Garrett, Caroline Hutton, Jackie Jasper, Mark Richards, (Jamie and Charlie Owen look after bookings)

Small ads

£1 for EACH item for sale or wanted (cash only please) - at one of the two drop-off locations)

Please note: no cash, no advert!

Answers to Bob's Bafflers

- 1 101
- 2 Butterflies
- 3 Caravan (a group of camels is also called a flock)
- 4 The maid
- 5 Fractions
- 6 £200
- 7 High Street
- 8 Napoleonic Wars
- 9 15 minutes, at least, is recommended (Highway Code section 91)
- 10 Joe Louis
- 11 Eastbourne
- 12 A Googol (this was the 'coughing cheat' Charles Ingram's £1 million question on 'Who wants to be a Millionaire').

Local organisation adverts

£2.50 per month for a small boxed advert or £8 for a full page. Full page adverts are allocated depending on space available and cannot be guaranteed. All monies must be at one of the two drop-off locations (Barter's Plant Centre or Acres Supply Garden Centre) by **4pm** on the **19th** of the month. Please note: no cash, no advert!

Trade advertising

Annual trade advertisements (12 issues, when space is available)

1 space	(69mm wide x 33mm high)	£24
2 spaces	(69mm wide x 66mm high)	£47
3 spaces	(quarter page - 69mm wide x 100mm high)	£68
4 spaces	(138mm wide x 66mm high)	£85
6 spaces	(half page - 138mm wide x 100mm high)	£120

Trade advertisement material should be supplied in print-ready format, to the chosen standard size and correct shape.

For trade advertising enquiries, please contact David James (Trade advert coordinator/Treasurer) at either thebridge832@gmail.com or 01373 832443.



Forrester Sylvester Mackett

SOLICITORS

Expert legal advice from our central Frome office



JANE HEALEY

Your local Wills, Trusts
& Probate expert



JOANNE AYRTON

Your local Residential
Property expert

Contact the team to book an appointment on: 01373 485485
6 Kingsway, Frome, BA11 1BT

www.fsmsolicitors.co.uk

enquiries@fsmsolicitors.co.uk

cloud
homecare

Quality care and
support in Warminster
and the surrounding
villages



We are a small, Corsley based care provider

**We provide care to people who need support
to remain living in their own home**

**Please telephone or email us, or visit our
website for further details**

Tel. 01373 832 597 enquiries@cloudhomecare.co.uk
www.cloudhomecare.co.uk

Seed potatoes, onion sets and shallots in stock!

First early
Second Early
&
Main Crop

Vegetable
Seeds

Garlic,
Rhubarb,
Ginger &
Asparagus

Red, White
& Shallot
Onions



01373 832591
www.acressupply.com
info@acressupply.com

*Your local, independent
garden and aquatic centre
Open 7 days a week*

Acres Supply
Corsley
BA12 7PP

5% discount on firewood for tenants of Longleat Estate

Pick your own kiln-dried logs ready to burn

or have standard hardwood
logs for storage delivered
to your door.

Monday to Friday: 7:30am to 4:15pm
01985 213507
longleat.co.uk/forestry

LONGLEAT
FORESTRY

