

The Bridge

April 2015



*find an egg, pick some litter, grab a racquet, join a quiz, borrow a book,
learn some history, visit a garden... there's lots to do in April!*

Castle Care Wessex

Because your home is your castle



CARE IN YOUR OWN HOME

We are a mother and daughter team running a professional, friendly agency specialising in:

24 hour live-in care

Helping loved ones stay in their own home, maintaining their independence.

Domiciliary Care

For short periods of time, perfect for clients who enjoy their independence but appreciate a helping hand.

For more information telephone 01373 836767

email: castlecarewessex@btconnect.com

www.castlecarewessex.com



Frome Heating Specialists

M A Knight

01373 832578

Heating and plumbing engineers specialising in:

Solar heating

Oil and gas boiler servicing

Boiler replacement

Energy management

Pressurised hot water systems

Underfloor heating systems



Family business established 1964

Stavanger, Corsley, Nr Warminster, Wiltshire, BA12 7QL

The Bridge

monthly magazine for the villages of Corsley and Chapmanslade

Articles

Please submit articles either by email to viv.thomas146@btinternet.com or by hand (legible handwriting please!) and take them to the drop-off locations at Barbers Plant Centre, Chapmanslade, or Acres Supply Garden Centre, Corsley by the deadline.

News, reports, updates, thank you's, etc, from individuals or local organisations are free – the more the merrier – keep 'em coming!

File types

Save your files as .doc – please don't send .docx files – I can't always open them successfully.

Advertising

Small ads are £1 for each item whether 'For Sale' or 'Wanted'.

Events/local organisation ads (churches, clubs, playgroups, etc) are £2 per month for a boxed advert.

Full page ads cost £7.50, are subject to space availability and cannot be guaranteed,

If you are advertising, don't forget to take the fee – cash or cheque in a sealed envelope please, to either of the drop-off points (Barbers Plant Centre or Acres Supply).

Please note: no cash, no advert!

Trade advertising

Please see information on the last page.

In this issue...

- 8 Bob's Bafflers**
a cunning quiz
- 11 Tennis Club**
over the net
- 20 Parish Council briefing**
Corsley
- Three Open Doors** **25**
news from the pews
- Corsley WI** **30**
news from the ladies
- News from the Nest** **31**
fledgling fun
- 40 Parish Council briefing**
Chapmanslade
- 45 Whitbourne Chapel**
chapel colloquy
- 50 Countryside matters**
views from over the hedge

Deadline

**Deadline for articles
or adverts for the next
issue of The Bridge is
4pm 19th April**

**Please note that no
items will be accepted
after this date**

April

Thursday 2nd

Warminster mobile library (see page 52 for times)

Quiz Night – 7.30pm, Royal Oak, Corsley - to raise money for the Corsley Show

Good Friday 3rd

Little Cuckoo's Easter Egg Hunt – 2-4pm

Chapmanslade Loose Women – speaker from Wilts and Swindon History Centre – 7.30pm

The Three Horseshoes (upstairs)

Saturday 4th

Corsley litter pick – 10.00, meet opposite the Royal Oak

Tuesday 7th

Coffee Morning – 10am - 12 noon, Corsley Reading Room

Thursday 9th

Corsley WI - 'Making Felt Brooches' – 7.30pm, Corsley Reading Room

Chapmanslade Parish Council - Annual Meeting (followed by a normal PC meeting) – 7.30pm, Chapmanslade School

Saturday 11th

Rotary Club of Frome – Fun Quiz – 7 for 7.30pm, Chapmanslade Village Hall

Tuesday 14th

Chapmanslade Village Hall AGM – 8pm, in the Village Hall

Wednesday 15th

Corsley Gardening Club - visit to Ridley's Cheer – 2.30pm (entry £7)

Annual Parochial Church Meeting – 7.30pm, Chapmanslade School

Thursday 16th

Warminster mobile library (see page 52 for times)

Church and Community Coffee Morning – 10.00am - noon, The Three Horseshoes, Chapmanslade

Saturday 18th

Junior coaching sessions begin at Corsley Tennis Club – 4-5pm

Sunday 19th

Field Day – 2-5pm, Corsley Memorial Playing Field

Wednesday 22nd

Light Bites Lunch – 12.30 - 1.30pm, Corsley Reading Room



Diary Dates

Thursday 30th

Warminster mobile library (see page 52 for times)

Warminster Area Board – 7.00pm, Warminster Civic Centre

May

Saturday 2nd

Corsley litter pick – 10.00, meet opposite the Royal Oak

Tuesday 5th

Coffee Morning – 10am - 12 noon, Corsley Reading Room

Thursday 7th

An Evening with Vivien Lloyd - learn all about jams and preserves – 7.30pm, Royal Oak, Corsley

Saturday 9th

Bluebell and Woodland walk, Corsley

Sunday 10th

Corsley Festival Choir - Rossini 'Petite Messe Solennelle' – 7.30pm, St Margaret's Church, Corsley

Monday 11th

Corsley Parish Council - Annual General Meeting (election of Chair and Vice Chair) – 7.30pm, Corsley Reading Room

Thursday 14th

Warminster mobile library (see page 52 for times)

Chapmanslade Parish Council - Annual General Meeting – 7.30pm, Chapmanslade School

Saturday 16th

May Fayre – 2.30pm, Manor Farm Corsley

Thursday 21st

Church and Community Coffee Morning – 10.00am - noon, The Three Horseshoes, Chapmanslade

Wednesday 27th

Light Bites Lunch – 12.30 - 1.30pm, Corsley Reading Room

Thursday 28th

Warminster mobile library (see page 52 for times)

continued...

June

Monday 1st

Corsley Parish Council - Quarterly Meeting – 7.30pm, Corsley Reading Room

Tuesday 2nd

Coffee Morning – 10am - 12 noon, Corsley Reading Room

Saturday 6th

Corsley litter pick – 10.00, meet opposite the Royal Oak

Thursday 18th

Church and Community Coffee Morning – 10.00am - noon, The Three Horseshoes, Chapmanslade
Corsley WI trip to Beaulieu – open to everyone (see page ??)

Wednesday 24th

Light Bites Lunch – 12.30 - 1.30pm, Corsley Reading Room

Thursday 2nd

Warminster Area Board – 7.00pm, Warminster Civic Centre

Tuesday 7th

Coffee Morning – 10am - 12 noon, Corsley Reading Room

Chapmanslade Village Hall AGM

8pm, Tuesday 14th April

Please come along! The hall has undergone huge improvements over the last few years and is an excellent village facility.

It would be great if we could find some new committee members as, sadly, one of our most loyal, hard-working members is retiring. We meet once a month in The Three Horseshoes, so you can enjoy a drink while we chat! We hold several popular events a year, which are fun as well as work!

It would be marvellous to see some new faces. If you are new in the village it would be a great way to meet you and for you to make new friends. If you do not want to be on the committee, we'd love to add your name to our list of volunteers who come along and help.

One of our members has even volunteered to make some delicious homemade biscuits to tempt you to come along.

Looking forward to seeing you all on 14th April!

Corsley Litter Pickers

Ever wondered why Corsley seems remarkably litter free when compared to, say, the A36, which is just plain disgusting? Do you enjoy living in such a tidy village? Great! Then why not make the effort to join the small and ever-dwindling band of volunteers who give up an hour each month to pick up the litter along the roads in our lovely village. Even if you can only manage

to help out on just three or four of the 'picks' it would help – that's only three or four hours per year! Proper equipment and hi-vis jacket are supplied and the team meet at 10am opposite the Royal Oak on the first Saturday each month. The next 'pick' is on the 4th April. Please do come along and help keep our village beautiful.



Pears Electricians

Nigel Charteris - BSc (Hons) M.I.E.T.



Professional Local Electrician

A HIGH STANDARD OF WORK AT REASONABLE RATES

Part P registered with www.napit.org.uk - Testimonials and references available

Faults & Troubleshooting • Repairs & Improvements
Installation Condition Reports • Boiler Wiring

www.pearselectrical.co.uk

01985 213314 or 07717 534026



OAKLEY

GARDEN MACHINERY

Grove Lane, Marston Trading Estate
 Frome, BA11 4AT

Hayter
 Mountfield
 Lawn King
 Westwood
 Stihl
 Honda
 Toro
 Echo
 Husqvarna
 Shindalwa
 Oregon
 and more...



**For Sales, Spares,
 Workshop Service
 and Repairs**

www.oakleyfrome.co.uk

01373 467712

Lawn Envy

Where the grass is always greener

For the healthy weed free lawn you have
 always dreamed of.

Book your free lawn consultation

01985 221107 – www.lawnenvy.net

Bride by Design

Bridal Gowns & Accessories



2 Silver Street
 Warminster
 BA12 8PS

01985 217216

Please contact us to arrange an appointment
www.bridebydesign.biz

STUNNING COASTAL VIEWS ON CORNISH COAST NEAR LOOE

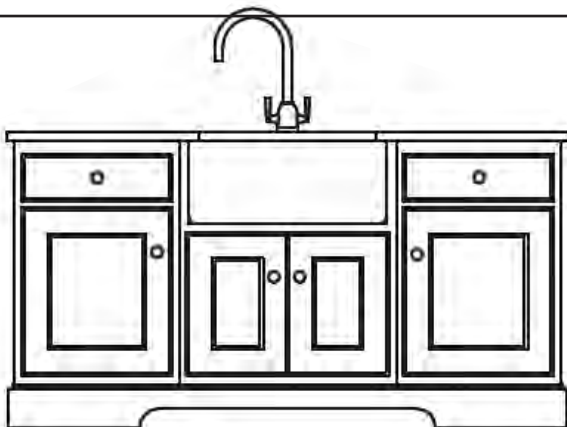


Six bedrooms (sleeps 12)
 Private access onto beach
 Pets allowed

Top class facilities including wi-fi
 Rent for week or even long weekend
 Downstairs bedroom and shower room

For more info: Sandy Parrish 01373 832522

McCulloch
FURNITURE



Kitchens • Bedrooms • Bathrooms • Libraries
Studies • Media furniture • Offices • Freestanding

The Workshop, Bruton Lane, Upton Noble, Somerset, BA4 6AH
Telephone 01749 850000 Fax 01749 850055 Mobile 07887 892633
enquiries@McCullochfurniture.co.uk
www.McCullochfurniture.co.uk

ORCHARD UPHOLSTERY

RE-UPHOLSTERY OF
ANTIQUE AND MODERN
FURNITURE

❖ FREE ESTIMATES ❖

COLLECTION AND
DELIVERY SERVICE

Telephone Lesley
01373 464870

Sharon's Foot Clinic

SAC Dip FHPT SAC Dip FHPP



Fully insured and highly trained

For the professional treatment of:
Corns • Callus • Cracked Heels
Athletes Foot • Fungal Infections
Thickened Nails • In-growing Nails
Diabetic Foot Care • Verrucas
Nail Cutting • Nail Reconstruction

Contact Sharon on
01373 836734 or 07728 200402

Clinic appointments at
12 Sunny Hill, Nunney, BA11 4ND

Home visits also available

LITTLE CUCKOO'S EASTER EGG HUNT



Good Friday, 3rd April
2pm-4pm

Complete our Easter quiz and win an egg, enjoy freshly made cakes and drinks before getting your face painted! There'll be Easter crafts, games and the chance to win a special Easter hamper along with many other prizes!

www.littlecuckoos.co.uk

01373 832 298 little.cuckoos@hotmail.co.uk

Ofsted number 161999

Registered charity number 1064800



Bob's bafflers

- 1 What term is synonymous with Cosa Nostra?
- 2 What does a speleologist study?
- 3 What is the legal term used to describe a written voluntary statement given under oath?
- 4 What term is used to describe the colour and feel that wood takes as a result of age, wear and polishing?
- 5 Bertram Mills was a famous name in which area of entertainment?
- 6 John Bull is the imaginary figure representing Great Britain. What is the name of his American counterpart?
- 7 What is a Great Northern Diver?
- 8 How many plays did Shakespeare write?
- 9 The Watchtower is a magazine associated with which religious group?
- 10 Who was the last English King to die in battle?
- 11 Which word can be a musical, a game and a record label?
- 12 Who according to the rhyme "caught fishes in other men's dishes"?

Answers on page 52

Chapmanslade Litter Pickers

After collecting litter from the High Street once a month for the past eleven years or so, we will be taking a break for the next few months until we can find more volunteers to join our team. Jill, Ian, Joyce and I, plus the other members of our team, past and present, have worked hard to help keep our village clean and tidy. Perhaps we have been able to demonstrate that some of us do care about the rising tide of litter in our villages, towns and in the countryside. Hopefully we have made some progress in persuading those people who do drop litter that such behaviour is unpleasant, unnecessary and anti-social. Let's hope so!

Do get in touch if you would like to join the litter-picking team so that we can resume our monthly picks.

Phil Jefferson
phil.jefferson@virgin.net
832845

UPVC REPAIRS WILTSHIRE.CO.UK

FOR PROFESSIONAL WINDOW & DOOR REPAIRS

Are you having a problem with your UPVC windows or doors?

- ✓ Misted glass
- ✓ Broken or faulty window hinges
- ✓ Faulty locks
- ✓ Jammed windows or doors
- ✓ UPVC door adjustments
- ✓ Window and door handles

Call us – we are here to help

All work guaranteed

01373 430010 07795 143228 www.upvcrepairswiltshire.co.uk

the three horseshoes

The pub Chapmanslade deserves

Open daily from 10am-11pm serving delicious home cooked food (12-3pm & 6-10pm Mon - Sat. All day Sun.) Enjoy a refreshing drink in our beer garden with spectacular views of Longleat and Cley Hill or indulge with one of our regular meals deals by the warm, open fire on a bitter winter's day. We organise monthly events featuring live music, comedy and much more!

Call us on 01373 832 211

Follow us on Facebook for more details.



threehorseshoeschapmanslade



Clare Merritt

Quality re-upholstery and loose covers

Curtain make up

Roman blinds made to measure

Fabrics, curtain poles, etc

01373 464993

Established 1973

Piano Tuition

All standards welcome

Debbie Rickhuss LLCM BEd

Teacher Pianoforte and Theory

reasonable rates ~ 01373 832829



**Shake off those pounds and
dance yourself fit.**

Chapmanslade Village Hall
Monday 7.30pm - 8.30pm

Longbridge Deverill Village Hall
Thursday 7pm - 8pm

For all levels of fitness and
NO experience needed.

For more information please contact
Amy 07830 119032

Busy Bees Pre-School Chapmanslade



For children aged 2-5 years
Monday, Wednesday, Thursday and Friday
8am - 5pm; Tuesday 8am - 3.30pm

Please contact Kelly Williams to arrange a
visit and a free trial session for your child
Breakfast club and after-school club available.

Term time only

Telephone 07749 257608
busybeespre-school@hotmail.co.uk

FENCING



Garden Fence Company
Garden fencing supplied and erected

- Repairs to existing fences
- Old fencing removed from site
- Hedges cut
- Small trees felled

For a friendly, cost effective and reliable
service contact Gerald Gascoigne on:

07506 373335, 01373 832613
info@wessexgardenfencing.co.uk
www.wessexgardenfencing.co.uk

For your
Heating Oil Supplies
contact

KINCH FUELS

at their
local depot in
Devizes, Wiltshire

Telephone 01380 727102

*The company you and
your home will warm to*



LUXURY PRIVATE CAR HIRE

A locally based, door-to-door, personal
service for up to six passengers in
air conditioned comfort

AIRPORTS • SEAPORTS • ANYWHERE

For bookings, please call
01985 840088 07903 307734

WEST COUNTRY SWEEP

Domestic & Commercial Chimney Services

Andrew Leigh

07545 822109
westcountrysweep@gmail.com



Corsley Tennis Club News

Tennis coaching for juniors

Corsley Tennis Club is currently providing coaching for 12 - 15 year olds. After Easter we will be adding a second session for children aged 6 years or older. Junior coaching takes place on Saturday afternoons and the new group will commence on Saturday 18th April from 4-5pm. Racquets can be provided.

If you are interested in our junior coaching sessions but cannot attend between 4 and 5pm, please contact Sandra who may be able to arrange an alternative time

For more details, or to enrol your child or grandchild in the coaching group, please ring Sandra Whatley on 01373 832202 or our club coach Jon Dilela on 01373 859755.

New season news

April is the start of our new membership year. The Ladies' and Men's Singles tournaments begin and the popular American Tournament is booked for Sunday 17th May at 2pm. This tournament is normally followed by a scrumptious tea on a bring and share basis.

7th and 14th June are booked for the Ladies' Doubles tournament and the Men's Doubles tournament. The mixed doubles is booked for Sunday 19th July.

Our three League teams are working hard to be ready for the start of the Chippenham and District Tennis League. Some hardy adult members have played throughout the winter both in groups playing doubles and attending Club Sessions on Tuesday and Sunday mornings commencing at 10.00am.

We are fortunate that our well maintained courts drain quickly and the surface is playable on damp days without risk of slipping.

Open Tennis Day sponsored by the Lawn Tennis Association.

On Saturday 16th May we have an Open Tennis Day which is your chance to come along and play for free. You will have the opportunity to meet club members and join in and play. We will be able to loan rackets but you will need to wear soft soled foot wear appropriate for tennis. This is to protect the courts and ensure your safety by minimising the risk of falls. Do come and join in, any standard of play is welcome perhaps you'll get the bug for tennis like us! More details of this event in the May edition of The Bridge.

Other opportunities for a trial

If you would like to attend one of our Club mornings on a trial basis we would be delighted to see you: just turn up at the courts at the Corsley Memorial Playing Field on Tuesdays or Sundays from 10.00am – noon. The 10th April will see the start our club evenings on Fridays from 5.30pm. Potential new members can attend up to three trial sessions for a fee of £2 per session. After this we ask that you consider joining.

If you prefer to make contact before turning up to play, please ring our Chairman Isobel Lewis on 01373 832770, she will ensure that someone looks out to greet you and introduce you to the members.

Marlene Latchem
01373 832357
Publicity Secretary

Biology: changing the world

What are '3-parent babies'

and why is this an important medical advance?

There have been many comments in the news recently about so-called "3-parent babies". This rather alarmist description is better expressed as "mitochondrial donation" and it has been the subject of debate in Parliament, where it was agreed that the UK would be the first country in the world to allow this to prevent mitochondrial disease.

So what are mitochondria and what is mitochondrial disease? Mitochondria provide the energy (called ATP) for every cell in your body. There are many hundreds of them in most cells and they are particularly important in muscle, the brain and liver, the organs that consume most energy. Mitochondrial disease happens when the mitochondria do not function properly and such diseases may result in poor growth, loss of muscle coordination, loss of sight, seizures, heart and liver disease, and neurological problems. About 1 in 4000 children suffer from such diseases.

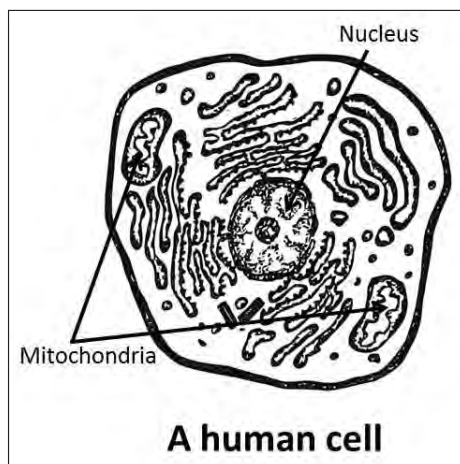
So why is mitochondrial donation important? Most of your genetic material comes from

both your father and mother and is found in the nucleus of every cell in your body. At conception the nucleus of the sperm fuses with the nucleus of the egg to create the nucleus of the first cell, which will divide many times to form a foetus. If there is a

faulty gene from one parent, the chances are that the other parent has provided a functioning gene that allows your cells to work as normal. However, a small amount of genetic material is also found in the mitochondria and this is mainly concerned with energy generation. When the egg and sperm fuse at conception mitochondria come

only from the egg - that is, from the mother. This means that if there is a faulty gene in the mitochondria there is no compensating functional gene from the father.

Mitochondrial donation is a way in which women with a faulty mitochondrial gene can still give birth to healthy babies. An egg cell is taken from a woman who has normal mitochondria, the nucleus of the egg is removed and it is replaced by the nucleus from the biological mother. The



egg is then fertilised with sperm from the father and the fertilised egg is implanted in the mother's womb. (This is in-vitro fertilisation or IVF, a standard procedure these days for couples who have difficulty conceiving). The majority of the genes (over 70,000) are in the nucleus and come from the father and the mother as normal. However, the small number of genes present in mitochondria (37) are effectively donated by another woman – hence the tabloid description of “3-parent babies”.

Although the procedures are technically difficult, the medical science behind them is relatively straight forward. The concerns are ethical and social, and these are complex. A number of opponents of the technique have claimed that it is ‘playing God’ and others have raised issues about the nature of an individual. Supporters have pointed out the number of children who could be saved from debilitating illness. This was an important discussion that has polarised views and has raised issues about ‘designer babies’. The issue was one where science provides an opportunity, but it is for society to decide. This it has done through Parliament.

Nigel Brown

(Figure courtesy of ThinkStock)

Nigel Brown is a retired Professor of Microbiology, now living in Chappmanslade. If there is a biological topic that you would like him to write about, please contact him at nigelbrown48@gmail.com.

Sponsored by the Society of Biology

“All for one, and one for all”

Naughty cardinals, gay Frenchman and a wicked lady – all my wildest dreams come true!!!

But ‘what, when and where?’ I hear you ask, can I find all these things?

Saturday 1st August 2015

Manor Farm, Corsley

*Coming over all Louis the 13th, yes, mes amis
The Elizabethan Evening will be presenting*

‘The Three Musketeers’

To be performed by the outstanding Illyria theatre company.

A rollicking adaptation of Dumas’ classic with misplaced hankies, earrings, duels, sword play and damsels most distressed.

After the huge success of last year’s performance of the Pirates of Penzance by Illyria, we have retained them again for this year’s play. Your scribe however has to humbly apologise for possibly misleading our most respected patrons into believing we would be putting on Iolanthe in 2015 – this will come in some future year.

So whip out your rapiers, foils and epees; mount the donkey and get ready for next years all-enthrralling theatrical extravaganza.

The Inn of the Red Dovecot or even the Jolly Farmer will be open to service wicked and slightly less wicked ladies and gents; our chefs extraordinaire will conjure up some nourriture traditionnelle du pays as befits the evening entertainment.

Rwqges

Your humble barman

(discounts available for particularly wicked ladies)

So book the date and be prepared to ring Clare on 01373 832113 for ticket and supper information.

Corsley Memorial

Playing Field update

2015 is going to be a very busy year for the Playing Field...

We are running FREE monthly events as part of our grant funded 'Health and Wellbeing' project. We are running most of these on the second Sunday of each month, as a way of stimulating both mental and physical health. Look out for the advertisements in The Bridge.

Events held so far have included a games/cards afternoon, a quiz night with free mince pies and this month we had a number of very interesting short talks. Mike Knight told about his father's memories of World War II and Arnhem in particular. Caroline Le Vine explained about psychotherapy and counselling, what it is and what it isn't and how she sometimes uses pebbles to help clients. Dr Jean Boulton explained complexity theory and why governments are constantly trying to turn things into linear processes when we are complex, variable people. Finally, Nigel Bridewell told us about the history of Barter's Farm and how they invented poly tunnels. Yes, did you know that poly tunnels were invented in Chapmanslade?

Next month, as the weather improves, we are moving back to the Playing Field and we are having a Field Day! We invite you to come over for tea and a cake and to help us prepare the field for the coming year. As you can imagine, keeping the field in tip-top

condition takes a lot of work, all done by volunteers. It would be great, and good exercise, if you could join us for an hour or two. I would especially ask those with children who use the field to come along with the kids and give us a hand on Sunday 19th April from 2 - 5pm. We will find you something to do that suits your abilities – great or small.

Whilst on playing field maintenance, I would like to thank Adam Oakley for supporting us with some great discounts on some wonderful new tools, specially designed so we don't have to bend or strain backs. They will all be on show and in use if you come along on the 19th April!

Finally, I wanted to mention that for those visiting the field you will see a wonderful display of daffodils. We have planted many hundreds again this year – in groups of 28 to remember those from Corsley who died during the wars and who are named on the Playing Field gate plaques. The flowers are for everyone to enjoy so can I ask parents to remind their children not to pick them. Thank you.

Marion Liquorice
01373 832314
marion@nmc2.co.uk

CORSLEY MEMORIAL
PLAYING FIELD

Charity Number: 305497



As part of our
Health and Wellbeing Project...

Field Day

2 - 5pm, Sunday 19th April

Please come along to help us get the Corsley Memorial Playing Field ready for another great British summer. There's free tea and cake too!

Everyone welcome! All ages!
Just turn up!

Any question? Ask either
Barbara 01373 832273
Dot 01373 832059, or
Marion 01373 832314
marion@nmc2.co.uk

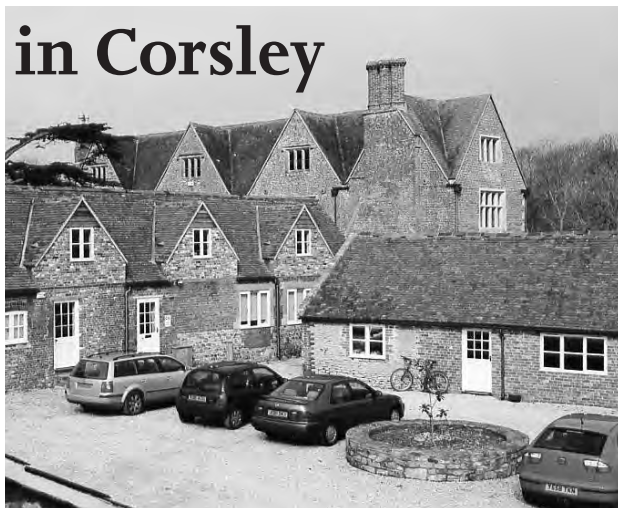


The Community Foundation
for Wiltshire & Swindon
Find out about the Health & Wellbeing
project sponsored by The Community
Foundation for Wiltshire & Swindon

Offices to let in Corsley

**A range of office suites
available singly or in
combination**

Modern, high specification IT
and telecoms infrastructure.
Full heating. Historic country
house setting. Ample parking.
Excellent working environment.



Call 01373 832120 for details



For Expert Tree Care

Telephone Jon Burgess on
01985 214320

Skilled pruning
Tree felling
Stump removal
Qualified and insured

**Free tree health
survey and quotes**

Keep active with physiotherapy

Alison Rossiter MCSP HPC

Chartered Physiotherapist

30 years experience in physiotherapy specialising in the treatment of muscle and joint problems. Helping people to improve their health and fitness through treatment, exercise and advice.

Home visits can be arranged.

Daytime and evening appointments available.

If you need help please contact:

Beckington Physiotherapy 01373 831483

Email: arossiterphysio@gmail.com

www.beckingtonphysio.co.uk

DAVID EDMUNDS & CO
ACCOUNTANTS & TAX CONSULTANTS

Specialists in the self-employed, small and medium business and self assessment. Preparation of accounts, VAT, PAYE, income tax and corporation tax returns.

*Personal, friendly service
Evening appointments by arrangement*

Telephone 01225 334447

Home 01373 832430



**Specialist installers of Macadam
Sports Surfaces with laser technology**

- Tennis courts
- Playgrounds
- Multi-use games areas
- Football, hockey & cricket pitches
- Synthetic grass

7 Whitworth Road
Marston Trading Estate
Frome, BA11 4BY

t. 0845 2416115
m. 07767 401270

colinb@thornburysports.co.uk
www.thornburysports.co.uk

Kevin O'Mahony
Quality Painter and Decorator

Internal and external painting
Artexing
Wallpapering
Coving
Hand painted kitchen units

07724 349447 or 01985 301197
email kevo7743@googlemail.com
www.thewarminsterpainter.co.uk

Corsley and Chapmanslade Churches

May Fayrø

2.30pm Saturday 16th May

Corsley Manor Farm

by kind permission of Claire and Chris da Costa

Cream Teas ❀ Plants ❀ Produce ❀ Bottle stall
Bric-a-brac ❀ 50/50 Club Draw ❀ and much more!

Phone Stella Bayman (01373 832230) or Phil Jefferson (01373 832845)
for further information or offers of help

Corsley Show 2015 presents

An Evening with Vivien Lloyd

7.30pm, Thursday 7th May at the Royal Oak, Corsley

"Vivien Lloyd is an inspirational tutor, author, preserver and baker who encourages novices and artisans to refine their skills, instilling passion for genuinely top quality products."

Vivien, our distinguished judge in the jams and preserves classes, has kindly agreed to talk about just what is required for that 'perfect preserve' and to share her expertise and tips for creating clever curds and marvellous marmalade.

Come along to The Royal Oak and give yourself a competitive edge in this year's Corsley Show, or pick up some excellent tips on making preserves.

Vivien will also be signing copies of her latest book.

Tickets £2 on the day (all receipts will go to help the Corsley Show survive)



ALLSOP CARPETS & FLOORING

DOMESTIC ♦ COMMERCIAL ♦ INDUSTRIAL

Christchurch Street West, Frome BA11 1EB

TEL: 01373 463866 MOBILE: 07887 953014

www.allsopcarpets.co.uk

Chapmanslade Village Hall

Can be hired for all your functions:
parties, weddings, meetings, classes, etc

For hiring information, phone

Ken Davies 01373 832034 or email
chapmansladehall@blueyonder.co.uk

KEYVOLUTION

Locksmith and
Carpentry Services
serving the Wiltshire Area

Warminster based company offering locksmith and carpentry.
Police cleared, reliable and honest service.
Any other quote beaten.

- BS3621 lock upgrades for house insurance approval
- Garage doors, locks and running gear
- Lock repairs – specialising in Chubb mortice locks
- Upvc double-glazed door and window locks fitted – even old ones!
- Door or window locks opened destructively or non-destructively (indemnity required for these services)
- Digital code locks supplied and fitted
- All types of carpentry work – mostly 2nd fix and maintenance

Check out my website

www.keyvolution.co.uk



or call Ben on 07748 214799 or 01985 219799

White Horse Windows

Windows, Doors, Conservatories and
more...

Local Company, Exceptional Standards
10 year guarantee

Windows Fascia & Guttering
Doors Conservatories

CERTASS Registered

For a Free Quotation call Ryan on
07909 441442 or 01373 302594



TOENAIL CUTTING

IN YOUR OWN HOME

ALICE LEWIS

01373 228010

SINGING LESSONS

Charles Hetherington ARCM

*All ages welcome. Learn to sing,
develop your solo voice, work for an
exam, or sing the music you enjoy,
with accompaniment.*

PIANO AND CELLO LESSONS

Ann Hetherington

*Many years of experience
with the young and beginners.*

Tel: 01373 832733

SomerSet

SURFACING

Division of
Thornbury Sports

For Roads, Footpaths, Driveways, Car Parks

- Macadam surfacing
- Block paving
- Resin bonded surfacing
- Coloured Macadams

7 Whitworth Road
Marston Trading Estate
Frome, BA11 4BY

t. 0845 2416115
m. 07767 401270

colinb@thornburysports.co.uk
www.thornburysports.co.uk

BARTERS PLANT CENTRE

'Passionate about Plants'

Shrubs ♦ Perennials ♦ Trees ♦ Roses ♦ Conifers
Climbers ♦ Fruit Trees ♦ Hedging ♦ Soft Fruit ♦ Seeds
Bulbs ♦ Basket Plants ♦ Bedding ♦ Vegetable Plants
Christmas Trees ♦ Holly Wreaths
National Garden Gift Tokens



Opening Hours

Mon to Sat	9 - 5	(March to October)
Mon to Sat	9 - 4.30	(November to February)
Sun	10 - 4	(March to June + December)

Just off A36 in Chapmanslade, Wilts, BA13 4AL
01373 832694 www.barters.co.uk



JONATHAN CORP

Painter and Decorator
General House Maintenance
Sturford Mead Farm, Corsley
Warminster, Wiltshire, BA12 7QU
01373 832213

Postlebury News R Gould – Newsagent

All papers and magazines
Home delivery service

01749 850556 07979 452677

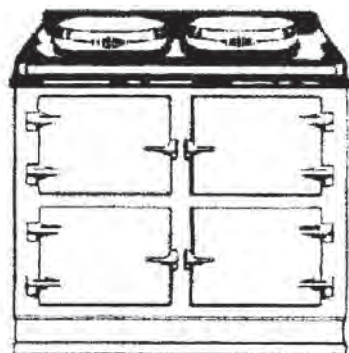


T A P Services

Telephone/Fax 01373 463106

www.tapservices.co.uk

Authorised Stanley Service Agent



Range Cooker Servicing

Corsley Parish Council

Parish Council Briefing

The Chairman presents a round-up of the Annual Parish Meeting and the short PC meeting held on the 11th March.

The APM was followed by a short Parish Council meeting to discuss and agree the annual grants to local organisations.

Annual Parish Meeting

The Annual Parish Meeting is a legal requirement and is run for two principal reasons. First it is the opportunity for the Parish Council to explain what it has been doing over the previous year, in particular how it has spent the precept, the amount allocated to the Parish from Council tax, and, second, for electors to have their say on anything they consider is important to the Parish. It is very much an open meeting and all are invited to ask their questions.

With the recent appointment of new senior management in Longleat Estate, the Parish Council thought that it would be of interest to the Parish to hear directly from Michael Birnie, Land Agent, and Bob Montgomery, Chief Executive Officer (CEO). Between them they share responsibility for the whole Estate, Michael taking traditional responsibility for the land, buildings, the farms, rented properties, and Bob for the attractions and events. Both gave a presentation on their part of the business and answered questions covering a wide variety of issues from a packed audience.

Michael Birnie explained the extent of the estate management task in terms of the size and extent of Longleat, the associated

infrastructure, forestry and farming businesses. He particularly mentioned the Grade 1 listing of Longleat House and the heritage burden that goes with its maintenance. He was very sensitive to the issues affecting Corsley, notably the traffic issues and empty properties in the locality. Longleat had now brought down the number of empty properties very significantly, from 40 down to two and he and Bob were in active negotiation with the Caravan Club (CC) with a view to reducing their impact on the Corsley Lanes and other aspects of the relationship between the CC and the Estate. This was part a long term 'master' plan, covering all aspects of Longleat traffic, but he expected that the CC initiative should yield fruit round about September this year at which point Corsley would be consulted again on the developing plans. In the meantime, this year will see the familiar routing of caravan traffic through Lane End.

Bob Montgomery talked about the recent successes with new attractions and some of the plans for the future. Significant streamlining had taken place in the last 12 months in the layers of management and both Bob and Michael were pursuing a deliberate and positive policy of engagement with the communities in and around Longleat. In general, 60% of Longleat's visitor income is in the summer months and his desire was to use the time

outside this period to put on more events and attractions to increase revenue without causing traffic issues. The Christmas Chinese Lantern Show had increased visitors by 70%, with no impact on traffic flows in the local villages, and this show had resulted in national recognition in the Sino/British arts community. Bob expected that this association would bring more events to the estate. Next year is the 50th anniversary of the opening of the estate to the public and a number of events will be scheduled. Amongst these is 'Dinosaur 2015' which will feature 20 animatronic dinosaurs distributed around the estate in undisclosed locations – just what the grandchildren need! There are also plans to develop a special events centre.

Questions were many and varied and the principal answers are summarised:

Traffic

The policies in train were expected to result in a per annum increase of 1-2% in the number of visitors, spread over the whole year.

The Caravan Club has a lease until 2023 and the emphasis now is to negotiate a new deal, hopefully one which has traffic travelling one way in and one out.

Coaches enter the park through the main gate.

A promise was made to, once again, try and get the SATNAV companies to adjust their software to align with the routing indicated on road signs.

Empty properties

The possibility of a link from The Bridge website for adverts for these properties would be investigated.

Access to archives

It was planned that tours for local residents would be arranged in the house during the closed season and to allow some public access to documents during this period would be investigated for specific queries. Longleat were in the midst of putting large amounts of their historical records into a database.

Grounds access

The extant residents' grounds pass allows access anywhere in the park other than the attractions themselves. Dogs are not allowed.

At the end of the Longleat presentation, disappointingly, the audience dropped from over 60 down to 5 to hear the Chairman's report, which was delivered in a much truncated form. A link to the complete report will be placed on the Bridge web site.

Grants

Bids had been received from six organisations and the following grants were approved:

Corsley Reading Rooms

£1,000 (contribution to fire door installation)

Corsley & Chapmansalde PCC

£1,200 (St Margaret's upkeep)

Elizabethan Evening Committee

£1,000 (contribution to purchase/ installation of defibrillator)

Memorial Playing Field

£800 (contribution to insurance costs)

Exchange project

£250 (project to convert Lane End GPO box into vegetable exchange)

In addition to these grants, previous grants

www.corsleyandthebridge.co.uk



Clean-it

Recommended by



Carpet and upholstery cleaning specialist

01373 462059 or 07779 247961

Home ~ Private ~ Lettings



TRAVELSTAR UK

Luxury chauffeured travel since 2002

Mercedes 'S' Class and 'E' Class cars

all in immaculate silver with

air-conditioned / leather interiors

Classic Bentley wedding day cars

8-seater people carriers



info@TravelstarUK.com

01373 430501

www.TravelstarUK.com "A pedigree local service"

Longleat Forestry

Picket Post, Warminster

Wiltshire, BA12 7JS

firewood logs

coal

kindling

woodchip

mulch

rustic poles

firelighters

christmas trees

01985 213507

Domestic Appliance Spares and Repair Service

Domesticare

Mike, David and Sue Wye

21 Keyford, Frome

01373 467351

Professional Childcare

Qualified, approved and registered.

A tailor-made, personal service.

Local and surrounding areas.

Call 07883 025476

denise.m.rawlings@mypostoffice.co.uk



**STONE &
BRICKWORK
SPECIALISTS**

**ROCKET
MASONRY**

Tel: 07970 513233

Email: terry@rocketmasonry.co.uk

www.rocketmasonry.co.uk

JERRY RAYNER :
boiler maintenance :

01985 841461 or 07775 755981

FOR SERVICING AND BREAKDOWN

OF OIL BOILERS

also AGA and RAYBURN

- Competitive rates
- Friendly, helpful and efficient
- Call now for a quote

had been agreed of £2,000 to the Corsley Show and £132 to The Bridge.

Social Housing

Since the APM, a verbal debrief (19th March) was given to the Chairman by the Wiltshire Commissioning and Contracts Lead for new housing, Victoria Smith, on the progress with the potential development of the Bay Tree site. It appears that Wiltshire Council members have decided that priority should be given to the construction of bungalows for the 'elderly' (i.e. over age 55). Any other type of housing, such as the houses recommended by the Housing Survey, will not be considered. By the time this edition of Bridge Corsley PC has had to make a quick decision on whether or not to support this move. If it is not supported then there will be no more development on this site for the foreseeable future; if it is supported then it is likely that plans will be developed for five bungalows, occupancy to be decided in accordance with social housing register rules.

Dates of 2015 Meetings

Annual Parish Council Meeting

Monday 11th May

(election of Chair and Vice Chair)

Quarterly Meetings

Monday 1st June

Monday 7th September

Monday 7th December

Occasional meetings, at short notice, will also be held to discuss planning applications and other urgent business. Please watch the village noticeboards and The Bridge website for these.

Neil Britten

*Chairman, Corsley Parish Council,
neil.britten@btinternet.com*

Poet's Corner

I remember the cheese of my childhood,
And the bread that we cut with a knife,
When the children helped with the housework,
And the men went to work not the wife.

The cheese never needed a fridge,
And the bread was so crusty and hot
The children were seldom unhappy
And the wife was content with her lot.

I remember the milk from the bottle,
With the yummy cream on the top,
Our dinner came hot from the oven,
And not from the fridge; in the shop.

The kids were a lot more contented,
They didn't need money for kicks,
Just a game with their mates on the road,
And sometimes the Saturday flicks.

I remember the shop on the corner,
Where a pen'orth of lollies was sold
Do you think I'm a bit too nostalgic?
Or is it...I'm just getting old?

I remember the 'loo' was the lav
And the bogey man came in the night,
It wasn't the least bit funny
Going 'out the back' with no light.

The interesting items we perused
From the newspapers cut into squares,
And hung on a peg in the loo,
It took little to keep us amused.

The clothes were boiled in the copper
With plenty of rich foamy suds
But the ironing seemed never ending
As Mum pressed everyone's 'duds'.

I remember the slap on my backside,
And the taste of soap if I swore
Anorexia and diets weren't heard of
And we hadn't much choice what we wore.

Do you think that bruised our ego?
Or our initiative was destroyed?
We ate what was put on the table
And I think life was better enjoyed.

H A S L

Hyde Accounting Services Ltd Accountant & Bookkeeper

**Self Assessment tax
Bookkeeping, VAT, Payroll
Construction Industry Scheme**



New Business
Start-ups and
Limited Company
Formation

Vanessa M A Hyde MAAT
Locally based in Corsley Heath

t. 01373 832700
m. 07740 468 003
e. vanessa@hydeaccounting.co.uk
w. www.hydeaccounting.co.uk

Cross Keys

Lyes Green, Corsley

*Home-cooked food
12 - 2.30pm and 6 - 9pm
Open all day on Sundays
food served 12 - 8pm*

Function room and large beer garden



01373 832406

www.facebook.com/CrossKeysInnCorsley

Corsley Tennis Club



New members welcome –
all ages, all abilities
Three hard courts available all year
Weekly junior coaching available

Low subscriptions

Contact either

Isabel Lewis 01373 832770 or
Rebecca Bennett 07974 796468



Little Cuckoo's Pre-School

Lyes Green, Corsley
(next to the Corsley Centre)

For children aged 2-5 years

Monday, Wednesday, Thursday and
Friday - 9am - 3pm

Now accepting 2 year-old funding in
accordance with Wiltshire Council guidelines

Mother and Baby Group
Tuesday mornings from 10am to 11.30am

Contact Hayley McMahon 01373 832298
www.littlecuckoos@hotmail.co.uk



CHRIS SEVIOUR
Building Services

07894 708949

cmseviour@gmail.com

Roofing, Loft conversions,
Extensions, Plastering,
Natural stonework



S B Services



Contact Sean
07828 671566

*For your garden maintenance
and home improvements*

Three Open Doors

Dear Friends,

As I write I can see through my widow an extraordinarily beautiful cock pheasant strutting his stuff in the garden, his plumage iridescent in the spring light; what lady pheasant could resist him?

The mating game is in full swing as the lengthening hours of daylight draw us to the most important festival of the Christian year; Easter Sunday. Often it can be tempting to skip the days leading up to Easter completely, after all, the events of Holy Week are particularly dark. Why bother with all that pain when you can have bunnies and chocolate and cuddly lambs – well not quite so cuddly if they are accompanied by mint sauce.

When I was a little girl I had quite a large extended family of grandparents, aunts, and spinster great aunts rendered single in the aftermath of the Great War, and my sister and I were very fortunate at Easter because we were given a goodly number of Easter eggs. Being a rather greedy little girl I ate all my eggs very quickly, but my sister, who is five years older than me, had the good sense to eat hers slowly so she could savour the experience. I can still picture very vividly the row of beautiful Easter eggs ranged across the windowsill of the bedroom we shared. And even fifty years later I can still feel the rage I experienced when my sister taunted me as she carefully took her chosen prize from its cardboard box and unwrapped the pretty coloured foil to reveal the delicious chocolate egg inside.

I had eaten my eggs; they were gone, no more. And let's be honest, when you actually break an Easter egg into bits there is not much chocolate there at all, it's soon eaten up. Easter eggs are a lovely symbol of new life but there is far more to Easter than this.

Our experience of life as human beings is not always wrapped up in shiny coloured foil and presented in a pretty box. Like the terrible suffering of Good Friday most of us at some point or another will go through dark times, times when we cry out, as Jesus did on the cross, 'O God, why?' Therein lies the power of Easter, because it is in these the most difficult of times that God can bring resurrection and hope. I am not saying that it is easy, it is profoundly difficult and the best we can do sometimes is to hold onto the hope that somehow when there seems no hope at all, it will come one day. Sometimes we can't even do that and then we need the company and love of others to hold the hope for us. There is no shame in this; God knows the secrets of our hearts, and loves us still.

I leave you with the words of a favourite hymn that expresses what I have been trying to say far better than I can:

In the grave they laid him, love whom we had slain, thinking that he's never wake to life again, laid in the earth, like grain that sleeps unseen: Love is come again, like wheat that springeth green.

Up he sprang at Easter, like the risen grain, he that for three days in the grave had lain; up from the dead, my risen Lord is seen: Love is come again, like wheat that springeth green.

When our hearts are saddened, grieving or in pain, by your touch you call us, back to life again; field of our hearts that dead and bare have been: Love is come again like wheat that springeth green.

Happy Easter
Pauline

April Church Diary

Thursday 2nd April: Maundy Thursday

7pm at St Philip & St James, Chapmanslade: Agape meal
7pm at St Peter & St Paul, Longbridge Deverill: Agape meal



Friday 3rd April: Good Friday

10am at Chapmanslade School: Messy Church Easter workshop
11am at St Michael the Archangel, Brixton Deverill: Stainer's Crucifixion and Service
12.30pm at St Philip & St James', Chapmanslade: short Good Friday Service



Sunday 5th April: Easter Sunday

8am at St Michael's, Brixton Deverill: 1662 BCP Holy Communion
9.30am at St Mary's, Temple, Corsley: 1662 BCP Holy Communion
9.30am at St Margaret's, Corsley: Eucharist
10.30am at St Peter and St Paul, Longbridge Deverill: Eucharist
10.30am at St John the Baptist, Horningsham: Eucharist



Tuesday 7th April

7.30pm at 129d Forest Walk, Chapmanslade: After Alpha Home Group



Sunday 12th April: Second Sunday of Easter

9.30am at St Philip & St James', Chapmanslade: Family Eucharist
10.30am at St Mary the Virgin, Kingston Deverill: Eucharist



Monday 13th April

10.30am at 5 Brimhill Rise, Chapmanslade: Time to Think Home Group



Wednesday 15th April

7.30pm at Chapmanslade School: Annual Parish Church Meeting



Thursday 16th April

10am to 12pm at the Three Horseshoes, Chapmanslade
Church and Community Coffee Morning

Sunday 19th April: Third Sunday of Easter

9am at St Mary's, Temple: 1662 BCP Holy Communion

10.30am at St Margaret's, Corsley: Family Worship

10.30am at St Michael the Archangel, Brixton Deverill: Eucharist



Tuesday 21st April

7.30pm at Honeysuckle Cottage, Corsley: After Alpha Home Group



Wednesday 22nd April

12.30pm to 1.30pm at the Reading Rooms, Corsley: Light Bites Soup & Bread Lunch.

Donations in aid of UNICEF Cyclone Pam Vanuatu appeal.



Sunday 26th April: Fourth Sunday of Easter

9.30am at St Philip & St James', Chapmanslade: Eucharist

10.30am at St Peter & St Paul, Longbridge Deverill: Eucharist



Monday 27th April

10.30am at 5 Brimhill Rise, Chapmanslade: Time to Think Home Group



Sunday 3rd May: Fifth Sunday of Easter

9.30am at St Margaret's, Corsley: Eucharist

11.15am at St Peter & St Paul, Longbridge Deverill: Morning Worship

New Benefice Office

We are pleased to announce the setting up of an office for our Benefice of Cley Hill Villages. The Benefice represents the two parishes – Corsley and Chapmanslade, and the Deverills and Horningsham. Now that we have much stronger links across both parishes it seems the right time to establish our own office, which will be housed in the vestry at St Margaret's church in Corsley. We are very grateful to the Minster for providing the administrative function for the last ten years.

We are also pleased to announce that Marion Muston has volunteered to take on the role of Administrator. We will announce full contact details in next month's Bridge when we will know the new telephone number and e-mail address. In the interim Marion can be contacted on 832755 or marionmuston@me.com. Initially we expect the office to be manned for two mornings a week but this will be adjusted as we establish the workload.

Priest in Charge	Reverend Pauline Reid email – revpauline@btinternet.com	01985 841290
Associate Priest	Rev Di Britten (day off is Friday)	01373 832515
Lay Pastoral Assistants	Richard Dean	01373 832594
	Barbara Hughes	01373 832273
	Claire Tanner	01985 218099
Pastoral Visitor	Alan Hopkinson	01373 832393
Churchwarden	Charles Thackway	01373 832048
Deputy Churchwarden	St Philip & St James – Janet Aylesbury	01373 832752
Deputy Churchwarden	St Margaret's – Judith Helliar	01373 832803
Deputy Churchwarden	St Mary's – Harcourt Gough	01373 832039
PCC Secretary	Phil Jefferson	01373 832845
PCC Minute Secretary	Sue Fear	01373 832074
PCC Treasurer	Keith Muston	01373 832755
Planned Giving Officer	Judith Helliar	01373 832803

Fundraising

Our next major event is the May Fayre which will be held on Saturday 16th May at Manor Farm, Corsley by kind permission of Chris and Claire da Costa. Please see the advert for full details. If you can assist by donating items for our stalls or can spare some time to help us on the day please contact Stella on 832230 or Phil on 832845.

We are about to embark on a major fundraising campaign to enable us to proceed with some major refurbishment of the bells at St Margaret's. We have six bells in the tower which were last serviced in the 1960's so we really do need to proceed with this work as soon as funds allow. We have been advised that the cost of the work will be in the order of £12,000; we have a major challenge ahead of us but we will succeed!

Our thoughts and prayers are with the families of:

Dick Hobbs whose funeral was held at West Wiltshire Crematorium on March 16th

Joy Hares whose funeral was held at St Margaret's Corsley on March 23rd

Jean Heard whose funeral was held at St Mary's Kingston Deverill on March 25th

Copy for 3 Open Doors should be sent to Keith Muston at
themustons@btinternet.com subject 3ODs or phone 01373 832755.

If you would like to receive weekly news of Church events and activities, please send your email address to the above, with subject 'Through the Open Doors' or download a pdf from the 'churches' pages at www.corsleyandthebridge.co.uk



*Individually tailored holidays
for the very best in African travel*

J&C Voyageurs organises individually tailored African holidays for those looking for something special, memorable and away from the crowds. We will incorporate your distinct wishes and aspirations, with no detail overlooked, so that you are able to relax completely.

We have a passion for Africa and conservation of its wildlife, peoples and incomparable scenery. With over 20 years' experience exploring Africa and putting outstanding African holidays together, we can discuss hundreds of safari lodges, camps, beaches and city hotels with first-hand knowledge.

Telephone 01373 832111

Email mail@jandcvoyageurs.com

www.jandcvoyageurs.com



HolidaysNearLongleat.co.uk

A Dedicated website for;

Self Catering, Bed & Breakfast

Guest House, Camping & Caravanning

Accommodation all close to the Longleat Estate

npv plumbing & heating

Installation • Servicing • Repairs

Bathroom and tiling specialists

All plumbing and heating work undertaken

Our fully qualified plumbers offer all general plumbing services from boilers to bathrooms. We will gladly advise clients on the most suitable products for their property – be it heating systems, boilers, radiators, bathrooms or showers.

07738 940355

www.plumbersfrome.co.uk

Hypnotherapy

If you need help with:

Anxiety

Depression

Phobias (such as flying or spiders)

Panic attacks

Relaxation

Weight management

Smoking cessation

Natural childbirth

Confidence

Public speaking

Exam nerves

and much, much more...

Call ANJI HOLLAND on
07944 647 978 / 01373 832 898
to enquire or just for a chat

www.hollandhypnotherapy.com

With practices in Chapmanslade and Bath

I am a member of the National Council for Hypnotherapists
and am bound by their code of practice and ethics

Corsley WI

April News



Carol Seward rounds up the March meeting and announces some forthcoming events

Corsley WI members enjoyed a cream tea with delicious homemade scones, jam and cream provided by the committee, after a talk from our WI Advisor, Jenny Coates, at the Annual Meeting on Thursday 12 March. Jenny is well known to our members for her witty tales and gave us an amusing talk on her experiences as a WI Advisor. Jenny also took the business section of the meeting when the existing committee was re-elected *en bloc*, with the addition of one new committee member and the re-election of Carol Seward as President.

The Wiltshire Federation have been busy arranging visits to the WI Centenary Fair in Harrogate, the All England Tennis Club at Wimbledon, Magna Flora at Salisbury and various workshops. Full details are available at our meetings. Jenny reported that due to a large number of WI members applying to attend, the Centenary Celebrations at Swindon are now to be held at the Steam Museum.

This year's Corsley WI outing will be to Beaulieu on Thursday 18th June and the trip is open to everyone. Please contact Carol

on 01373 832446 as soon as possible to reserve a seat on the coach if you would like to come.

The Rose Bowl for the most points in our monthly competitions for members was presented to Jean White and although there was stiff competition, Jean was the outright winner for the third consecutive year.

The raffle prizes this month were all Fairtrade items, in support of Fairtrade Fortnight.

On 9th April we start our summer timetable of evening meetings beginning at 7.30pm in Corsley Reading Room, with a demonstration by Gilly Newell on how to make felt brooches. Members will also be able to make their own brooches. The programme of meetings and events from May 2015 to April 2016 is being prepared now and will be available at our April meeting.

We should also be very pleased if any new members would like to come to our meetings. If you would like to know more about Corsley WI or any of our activities, please ring Carol Seward on 01373 832446.

Everyone is very welcome to join us for the following activities:

Bridge Club	First and third Tuesdays each month, 2-4pm, Corsley Reading Room
Coffee Morning	First Tuesday each month, 10-12noon, Corsley Reading Room
Gardening Club	Third Wednesday each month, venues as per club programme
Lunch Club	Last Tuesday of the month, 12.30pm, various venues

More details on the Gardening Club and Bridge Club from Pauline on 01985 215760



News from the Nest

Welcome to this month's feature of 'News from the Nest' from Little Cuckoo's Pre-School in Lyes Green, Corsley.

Little Cuckoos would like to invite you and your families along to our annual Easter Egg Hunt on this Good Friday 3rd April at 2-4pm

Come and join in the fun completing our quiz, face painting, hook a duck, crafts activities, homemade cakes and biscuits and lots lots more. We will be holding a 'Best Easter Crown' competition so please get crafting with your little ones and enter by bringing in your Crowns on the day.

We would like to say a big Thank You to all of the children that took part and made their 'Face Funny for Money' for Comic Relief on the 13th March. We had some fabulous faces and red noses and had a lovely day raising money for this wonderful charity.

We held our famous Stories by Starlight on Friday 6th March and had a lovely evening listening to stories read by some very brave parents and grandparents. There were pyjamas, hot chocolate and marshmallows. Thank you to all who came and we are looking forward to the next one already.

Little Cuckoos are pleased to announce our Third successive GOOD rating from Ofsted. The Inspector visited us on 5th February and observed the setting and sessions, management process, records and safeguarding. They were very pleased with the range of activities on offer, the extensive outdoor areas and the relationships between staff and children. We are thrilled and would like to Thank all the staff at Little Cuckoos for their hard work every day and for taking such great care of our children.

We wish you all a Happy Easter!

Term-time opening hours: Monday, Wednesday, Thursday and Friday 9am - 3pm

Term-time Mother and toddler group: Tuesday 10am - 11.30am

For more information, please contact Hayley on 01373 832298

www.littlecuckoos@hotmail.co.uk



Frome Park Bowling Club

Come and Play Bowls!

An ideal opportunity to help you lead a healthier lifestyle, socialise and enjoy new challenges. Come and make new friends and learn skills this summer with Frome Park Bowling Club.

Give it a try! Please phone us on 01373 452069

For more information go to our website www.fromeparkbowlsclub.co.uk



Chapmanslade Motor Services

**Vehicle repair
and servicing**

**Brake
specialist**

**MOT preparation
and repairs**



**Batteries
Exhausts
Tyres**



Quality service at competitive rates

FREE ~ wheel balancing and tracking with new tyres

FREE ~ courtesy car

Electronic diagnostics available – most makes covered

Green Farm Industrial Estate, Chapmanslade

01373 832188 or 07711 256927

**Busy
Bees**



01373 455911

SPECIALISTS IN CLEANING & GARDEN MAINTENANCE

Our services include:

**Domestic Cleaning
Commercial Cleaning
Carpet/Upholstery Cleaning
One-off spring cleans
Trauma Cleaning
Builders' Clean
Garden Maintenance
House and Garden Clearance**

Amy: 07971 921651 or Caron: 07971 921617

E-mail: info@busybees2000.co.uk

www.buzzybees2000.co.uk

JOHN E S JONES

**GENERAL
BUILDER**



Carpentry, painting and
decorating, extensions, uPVC,
facias and gutters, fencing,
decking and patios

Also general repairs

Telephone 01373 832600

Mobile 07074 832600

Top of the bestsellers, we bring you...

Fifty shades of gardening!

Rob White gives us his favourite collection of gardening tips

- 1 When growing roses, fertilize after each flush of blooms
- 2 Coffee grounds make excellent mulch around acid-loving plants.
- 3 When growing in containers, plants should be sized to the pot and pots should be sized to the space available.
- 4 Dry herbs at the end of the summer by tying sprigs together to form small bunches.
- 5 Garden soil that has been well mulched and occasionally amended requires only about a 1" layer of compost yearly to maintain its quality.
- 6 For successful peas, start them indoors as the germination rate is much higher,
- 7 Garlic, leeks and shallots make great outdoor container plants. They have very few insect and disease problems.
- 8 Know your insects. Learn what the different life-cycle stages look like for both beneficial insects and pests – you don't want to accidentally "rub out" the good guys.
- 9 Garden vegetables that become over-ripe will attract some pests.
- 10 Most indoor plants are killed by over-watering. Watch for yellow leaves, and do not water until the surface of the soil is dry.
- 11 Try to water plants deeply and thoroughly. Frequent, shallow watering



train your plants to keep their roots near the soil surface.

- 12 Plants native to your area are naturally adapted to the pre-existing growing conditions.
- 13 Keep dirt off vegetable leaves (thus preventing mould and fungi) by spreading a 1-2" layer of mulch around each plant.
- 14 Add comfrey to the compost pile. Its leaves are rich in nitrogen and help break down organic materials.
- 15 If roots are found coming out of the drainage hole located at the bottom of the plant's container, it's probably time to repot the plant.
- 16 As a general rule, indoor plants will thrive when temperatures are between 65-75°F.
- 17 When purchasing tomato plants, look for healthy green plants with thick stems and no tomatoes or flowers.
- 18 Organic fertilizers release nutrients slowly, allowing garden plants to absorb nutrients efficiently.

continued...

- 19 Indoor seedlings require plenty of light. Use a grow-light (up to 18 hours per day) or keep them in an area that receives plenty of sunlight.
- 20 In general, thinner-leaved plants need more water to stay alive, while thicker-leaved plants need less.
- 21 Water your garden in the early morning to conserve moisture loss and to help avoid fungal diseases that are often spread by high humidity levels.
- 22 Milk bottles and other plastic containers make great mini-greenhouses to place over your plants and protect them from frost.
- 23 When growing indoors, watch closely for signs of nutrient deficiencies. Remember, every time you water, nutrients are leached out of the soil.
- 24 Paint garden tools with brightly colored handles. They will be much easier to find when left behind with your plants.
- 25 Weekly applications of compost tea will improve plant health and ward off many fungal diseases.
- 26 Do not use softened water when watering plants. The salts can build up in the soil and kill plants.
- 27 If you're not confident in your seed-starting abilities, one of the best places to get them is your local garden centre. Very often the person selling them is the person who grew them in the first place.
- 28 Disease-prone plants such as roses should be planted in areas that receive plenty of morning sun. It helps evaporate dew more quickly, which keeps leaves dry and fungal diseases at bay.
- 29 When planting tomatoes, cover the stem with soil all the way up to the first set of leaves. This encourages strong root growth, which produces healthier plants.
- 30 Compost bins and piles can either be layered – alternating layers of greens (grass clippings, vegetable scraps) and browns (leaves, peanut shells, etc)
- 31 Harvest herbs early in the morning just as the dew evaporates but before the heat of the day, so leaves will still be full of their own essential oils and flavours.
- 32 Avoid using pressure-treated wood near your vegetable garden; the chemicals used as preservatives are considered to be toxic.
- 33 When tomato plants grow to 3ft tall, remove many of the leaves from the bottom third of the stem. These leaves receive very little sunlight and are often the first to develop fungal problems.
- 34 In most cases, collect herbs for cooking right before they flower. This is when they have the most flavour.
- 35 Earthworms are beneficial to both soil and plants, increasing air space in the soil and leaving behind worm castings for plants..
- 36 Many soft-bodied pests such as spider mites, aphids, thrips, and leafhoppers can be knocked off plants with a strong hose spray.
- 37 Pick off dead flowers to encourage more flowers. Once a plant forms seeds, it figures its flowering days are done.
- 38 Do not compost fats, pet droppings, or animal products. They will not only smell, but will attract pests to the pile and can spread disease.
- 39 Select a simple container to showcase an exotic looking plant or a flashy pot to make an ordinary plant stand out.
- 40 Brew compost tea by mixing equal parts compost and water and let it sit. Pour the tea directly onto the soil around



growing plants. Dilute this to four parts water to one part compost for use on seedlings.

- 41 Do not use garden soil as a potting mix. It may drain poorly and is likely to contain insects, diseases, and weed seeds.
- 42 When planting containers, fill them with soil to within one inch of the top to allow room for watering.
- 43 A simple five percent increase in organic material (compost, well-aged horse manure) quadruples the soil's ability to store water.
- 44 Botanical insecticides (pyrethrum, rotenone) are derived from plants, and can be more toxic than some chemical pesticides.
- 45 Plant vegetables in a different garden spot each year to help reduce pest and disease problems, as well as correct nutrient deficiencies and excesses.
- 46 Pest control begins with healthy soil. It produces healthy plants, which are better able to withstand disease and insect damage.
- 47 Compost is not a fertilizer. It builds up organic matter in the soil.
- 48 If you have a small garden space but want a lush look, try staggering your plants instead of planting them in rows. You'll be able to fit more plants in while still giving them enough room.
- 49 Attract beneficial insects like ladybirds and lacewings by raising nectar-producing plants such as fennel, parsley, and dill.
- 50 If you want to try companion planting, grow basil next to tomatoes. It really helps to slow down the bugs.

Rob White

Acres Supply Garden Centre, Corsley

Road Closure

B3092 Frome Road (Part), Horningsham and Maiden Bradley with Yarnfield from its junction with C27 Forest Road for a distance of approximately 50m in a southerly direction for bridge reconstruction.

Alternative route is via B3092 (unaffected length) - A361 - A362 - A36 - A350 - B3089 - A303 - B3092 (unaffected length) and vice versa.

The Order will come into operation on **5 May 2015** and it is anticipated that the closure will be required for **six weeks** (24 hours daily).

FOUND

at the bottom of Brimhill Rise,
Chapmanslade on
Tuesday 24th February.

Ladies small, right-hand, black
leather glove with three raised
decorative seams on the back and
zig-zag stitching on the wrist.

Please phone **01373 832681**
to retrieve.

Work...

Me-time...

Relationships...

...equally balanced?

Or is there a specific issue bothering you?

To create positive personal change,
book an appointment for an enlightening
initial consultation and see how Solution
Focused Hypnotherapy could help you.

Fi Robinson 07801 436633
fiona@balancehypnotherapy.co.uk
www.balancehypnotherapy.co.uk

Celebrating £1.74 million of opportunities!

Funding announced!

The Heart of Wessex LAG has received European Union funding to invest in rural businesses and community initiatives to improve the rural economy throughout the LAG area.

The Heart of Wessex has recently secured £1.74m through the Rural Development Programme for England to invest in projects that directly support the rural economy in the Local Action Group (LAG) area. The LAG will have the ability to support innovative projects that best address its local priorities through six priority objectives:

- support for increasing farm productivity
- support for micro and small enterprises and farm diversification
- support for rural tourism
- provision for rural services
- support for cultural and heritage activity
- support for increasing forestry productivity

The LAG will be fully 'open for business' after the General Election and the first call for project applications is expected in June. However, we are keen to hear from anyone who has a project idea and would like to find out if it would be eligible for funding. If you want to be involved in the LAG, or have an idea for a project, please get in touch.

Sarah Dyke-Bracher 07826 907361

Launching the Heart of Wessex Local Action Group

- do you want to sustain the high quality of life in your area?
- are you passionate about improving the rural economy?

- do you want to support opportunities for growth and employment?

If so, we need your help!

Come and help us celebrate the opportunities that this funding programme offers at:

**Launch Event
Wednesday 17th June
Cheese & Grain, Frome**

Hear how the programme works, how you can get involved through the Local Action Group and help decide where the money is invested, and how projects can apply for funding. It's an open meeting, so everyone is invited!

The Local Action Group forms the central part of the programme, it's an open group, and all the members have a fair and equal say on which projects should be supported, as well as giving overall guidance on the direction of the programme. The Local Action Group will officially launch at the 17th June meeting. Don't miss it!

The funding will be available from June 2015 to the end of 2020. It is really important that the programme makes a real difference – leaving a legacy that everyone benefits from, this means the programme

needs to be very focused on what it wants to achieve.

Your Interim LAG Executive Committee continues to work on achieving this focus to ensure the programme gets off to a flying start. The Interim Executive Committee is made up of a range of key organisations and individuals from across the Heart of Wessex area, all who have been working really hard over the last few months on your behalf! Decision making powers are delegated to this Committee and formal elections to form the Executive Committee will be held at the launch event. If are interested in standing for election on the Executive Committee, please get in touch.

Timings

There will be refreshments from 6pm onwards and the meeting will kick off at 6.30pm. There is plenty of parking at the Cheese & Grain and it's free after 6pm! If you know you are coming, please book your place; it will help plan for catering. A poster invitation will be circulated soon, and if you could put a poster up in your area and circulate to your contacts, that would be really helpful.

We look forward to seeing you on
Wednesday 17th June.

Book your place now!



HEART OF WESSEX
Local Action Group

For further information please contact
Sarah Dyke-Bracher on 07826 907361 or
sarah@heartofwessex.co.uk or
visit our website www.heartofwessex.co.uk



The Rotary Club of Frome

Fun Quiz

*7 for 7.30pm, Saturday 11th April
Chapmanslade Village Hall*

*Tickets £10 to include supper
from Ernie McKenna 01373 832763*

Bar · Raffle

*The Rotary Club of Frome Community Projects
The Rotary Club of Frome Charitable Trust. Reg No 1100424*

TEA & sympathy

Considerate catering at a difficult time

Catering specifically for funerals.

All our food is homemade, therefore, should you have a special request, perhaps a favourite cake ~ just ask and we will do our best.



Telephone Kim Clark on 01373 832151 or 07843 056916

e-mail kim@teaandsympathy.uk.com

www.teaandsympathy.uk.com

CHANTRY CONSTRUCTION

stone walling • patios

drives • extensions

prompt reliable service

mini digger and driver for hire

01373 836787 07855 343388

COMPUTER & LAPTOP REPAIRS
UPGRADES / SYSTEMS & LAPTOPS

VIRUS REMOVAL / BROADBAND
WIRELESS / NETWORKING



FAST, FRIENDLY, PROFESSIONAL SERVICE
COMPETITIVE RATES
ONSITE OR WORKSHOP

CCO CompTIA

call
01373 302901

www.ntscomputing.co.uk
help@ntscomputing.co.uk

LAPTOP REPAIRS

We also replace
laptop screens,
keyboards,
CD-DVD drives,
fix overheating
and more

Forget-me-not

• GARDENING SERVICE •



Weeding, pruning, planting,
fence painting, etc

01373 464416

07890 850465

Do you need a plumber? Call...



Paul Antell Plumbing

07890 366832

01373 467427

Professional, reliable, friendly and local
paulantellplumbing@talktalk.net
www.paulantellplumbing.co.uk

Weatherproof Windows Co.

- Renovation
- Replacement
- Draught-proofing
- Small repairs
- Replacement cords, pulleys handles, weights, glazing

All types of sash and wooden windows
suitable for Listed Buildings

Ian Gallagher
Fleecemill Cottage, 1 The Steps,
Buckland Dinham, BA11 2QR

Tel: 01373 474637 Mobile: 07929 938419

www.weatherproofwindows.co.uk

EVERGREEN GARDEN SERVICES

Garden maintenance and landscaping,
lawns, strimming, hedging, pruning
long and short term maintenance,
patios fencing, turf and seeding.

Over 20 years experience in
horticulture, landscaping and estate
management.

Contact Ben Hale

01373 825495

07879 492283



Rose Knight

House sitting and
dog and cat minding
service

01373 464904

07773 435254

knight_rosemary@sky.com



Dorch Oil BOILER SERVICING & REPAIR
A professional boiler repair company www.dorchoil.com

We service and repair all fired boilers.
All of our technicians are OFTEC registered and approved.

Call us on **01935 473302** or for an instant quote
visit www.dorchoil.com and fill out the form and one of
our team will call you back during office hours.

Call us on **01935 473302** or email info@dorchoil.co.uk for more information

ROGER PATCH GENERAL BUILDERS

Also offering purpose-made joinery

We now have a HETAS registered fitter enabling us to fit
Woodburners, Multifuel Stoves and Chimney Liners.

Cedar Cottage, Wolverton, Zeals, Wiltshire, BA12 6LW

Telephone 01747 840449 Mobile 07971 686973

Email rogeratwolverton@yahoo.co.uk

Chapmanslade Parish Council

Parish Council Briefing

Phil Jefferson reports on the PCs activities in March

The parish council met on two occasions last month, on 12th and 17th March. Our meeting on 12th March was attended by over 30 residents and by Fleur de Rhe Philipe, our Wiltshire councillor.

Thoulstone

James Smalley and Alex Leppingwell, representatives of James Hughes-Hallett, the owner of the former Thoulstone Park Golf Club, reported on their plans for the future development off the site. We were informed that work is proceeding to tidy up the site and make it more wildlife-friendly, which so far has involved the planting of a large number of native trees. Mr Hughes-Hallett has, however, on the advice of Wiltshire Council, dropped the proposal to build 40 houses on the site. We learned, too, that discussions are ongoing concerning the development of a 54 bed hotel with spa and golf course, which already has outline planning consent. The establishment of a rural work hub is also being considered. The planning application to site a number of residential caravans on the site has been revised down to three caravans and is currently being considered by Wiltshire Council.

Alex Leppingwell explained the background to a Premises Licence application which has recently been submitted by his company 'Sustainable Land and Events Limited'. If

granted, 'licensable activities' would be permitted at Thoulstone between 1st April and 30th September each year. These would include plays, films, live music, dance and the supply of alcohol. Most of these activities would be permitted until 2am, seven days a week. In addition, 'late night refreshment' would be available until 5am each morning.

Mr Leppingwell stressed that, in fact, far fewer activities than 2014 are planned for this year (between 10 and 14 took place last year): he mentioned three weddings and a 'huge' community picnic, planned to take place at the end of May. He acknowledged that noise had been a negative feature of last year's events and he said that he had been dismayed at the way some of them had been managed. There had been a subsequent change of management and he promised that the main source of noise would be relocated to a place much less likely to cause disturbance. There would be no more "hippy, traveller-based" events (his words). In this way he hoped to redress the balance from "where we are seen as a nuisance" to become seen as a resource.

After close questioning by parish councillors and residents, Mr Hughes-Hallett's representatives left the meeting. In the ensuing discussion, and as a consequence of the huge concern expressed by residents living in the immediate vicinity of the golf course, the parish council resolved to

submit a representation to Wiltshire Council objecting to the application on grounds of noise and public nuisance. Whether or not a licence will be granted will be decided at a public hearing, which is expected to be held on April 9th.

Update on planning applications

No decisions on current planning applications have been made by Wiltshire Council since our last meeting. This includes, of course, the wind turbine application and we have been assured a decision on this can be expected in April. Nor have we heard news of any progress in resolving the retrospective planning application concerning the static caravan located at Sienna's Valley. It was way back in December when Wiltshire's planning committee deferred a decision the issue of whether alpacas need continuous supervision on a 24 hour/7 day basis, which is disputed by the parish council.

Planning application – 20 Southcroft

An application to construct a new extension at this property, which is a Grade 2 listed building, is currently being considered by Wiltshire Council. The parish council looked at the application on 12th March but decided a site visit was needed before any conclusions could be drawn. We met again on 17th March, after visiting the neighbouring property, and resolved not to object to the application.

Defibrillator

We welcomed Derek Trick, from the Friends of Frome Hospital, to our meeting. The Friends have funded the placing of 20 defibrillators in and around Frome, and Frome is the only town in the country to have such coverage. Our machine's

guardians will shortly be invited to attend a training course after which we will hold a fund-raising coffee morning. We will plan further events in the future so that we can contribute towards the cost of maintaining the defibrillator.

Next meetings

Our next scheduled meeting is on Thursday 9th April. This will be our Annual Meeting, which gives you the opportunity to talk to us about the issues that matter to you in our parish. The meeting will start with a progress report from Lochailort Investments, the company currently working on plans to construct a housing development at Barbers Farm, and will include the results of a traffic management survey which we understand they have carried out. Our normal parish council meeting will follow immediately after this meeting.

On Thursday 14th May we will hold our Annual General Meeting, when we will present our Annual report and also elect the council's officers for the next twelve months. So, do come along to both meetings, either to speak or to listen.

Phil Jefferson
phil.jefferson@virgin.net
832845

Flash Fiction

Could you write a short story in 300 words or less? Look out for further details on the Corsley Show, Corsley and Chapmanslade village websites and in next month's edition of *The Bridge*. A good cash prize will be on offer for the top three entries!

Corsley Festival Choir

Registered Charity No 1078384



Rossini

Petite Messe Solennelle

Conductor Stephen Smith

Sunday 10th May

St Margaret's Church, Corsley, BA12 7QE

Soloists from Trinity College of Music

Disabled Access

Adults £12.50

Children £5

Tickets from choir members and by phone 01373 836866

Do you need funding for your group?

Our challenge is to make a positive change in Wiltshire by helping local groups make life better for their communities. We want to help you to support those who need it most.

You can apply grants for project or core costs and overheads for:

Foundation Grants

Apply for up to £5,000 for one year's funding, or up to £3,000 a year for two or three years. Funding will go to projects where the majority of people who will benefit experience disadvantage either economically, socially, geographically or physically.

The Office of Police & Crime Commissioner Grants

Apply for up to £3,000 for one year's funding. Applications are welcomed from groups who seek to bring communities together to tackle local issues around anti-social behaviour, crime, drug and alcohol related crime, reducing re-offending, violence against women and girls or youth crime.

Comic Relief Small Grants

Grants around £1,000-2,000 available to support work where there is clear evidence of a sustained beneficial impact on people's lives who are excluded or disadvantaged through low income, rural

or social isolation, age, disabilities, race, sexuality or gender. Priority is to be given to small, locally based groups or organisations in areas of disadvantage that have a clear understanding of the needs of their community and are undertaking actions as a means of addressing these needs.

Public Health & Wellbeing Grants

Apply for up to £4,000 for one year for groups who can demonstrate a clear link to improved mental or physical health outcomes that will result from their project, for example, reducing childhood obesity or helping adults to adopt healthier lifestyles, helping to combat loneliness, isolation and other factors which contribute to poor mental health, supporting older people to have more active and fulfilling lives, promoting the use of community green spaces, assets and infrastructure for exercise and wellbeing or reducing drug and alcohol abuse.

Visit our website at www.wiltshirecf.org.uk for more information and click on the 'Apply' menu. The first step is to fill in an 'Expression of Interest' survey and the link for this can be found underneath the listing of our criteria. If you meet our criteria we will send you a link for an online application form.

Call us on 01380 729284 or email info@wiltshirecf.org.uk to find out more about how we can help.

Steve Dayman-Johns

Driving Instructor

Condensed Courses and
Gift Vouchers available

Tel 01373 865422 - Mob 07730 445648

email stevekdj@gmail.com



zia pizza

pizzeria restaurant • italian take away

ANDREA & VIC INVITE YOU
TO SAMPLE AN AUTHENTIC ITALIAN
DINING EXPERIENCE. FROM PASTA
TO TRADITIONAL STONE BAKED
PIZZA, AVAILABLE IN THE
RESTAURANT & TO TAKE AWAY -
DELIVERY SERVICE AVAILABLE

www.ziapizza.co.uk

t: 01373 865271

15 palomino place • westbury
wiltshire • ba13 3sd

Dashing Dusters

- Cleaning and ironing to a high standard
- General domestic assistance
- Commercial cleaning
- Reliable
- Reasonable rates
- References available

01373 832484 (evenings)

M W Garden Services

20+ years experience

A tailor made service for all
types of garden maintenance

Insured and CBI's checked

mark22.weaver@mypostoffice.co.uk

Telephone 01373 832854

Mobile 07921 818452

Getting married? Special occasion?

Classic 1960 Hillman Minx Estate car for hire

Chauffeur ~ bows ~ flowers ~ champagne

Reasonable rates

Please contact Amanda on

01373 827795 or 07720 673698

Hardwood logs for sale

(cut to size if required)

FREE DELIVERY

R M Log Supplies

Beckington

Call Robin on

07876 621929

Offices to let – Corsley

Historic country
house setting.
Excellent working
environment.

Call 01373 832120



Whitbourne Chapel

*Jesus asked the disciples, "Who do you say I am?"
Peter answered, "You are the Christ."*

From Heaven's Gate to breakfast by the lake

Recently, visiting Heaven's Gate, with its beautiful views overlooking Longleat House and beyond, I was reminded of Jacob's dream of a ladder up to heaven with angels ascending and descending on it (Genesis 28). When the patriarch awoke he was aware of the awesome presence of God and said, "This is none other than the house of God; this is the gate of heaven".

In John's Gospel, chapter 1:43–51, we read how Nathanael was introduced to Jesus. Although sceptical at first his friend Philip persisted and invited him to "Come and See". Nathanael was soon convinced that Jesus was the Son of God. Jesus, alluding to Jacob's dream, told him: "I tell you the truth, you shall see heaven open, and the angels of God ascending and descending on the Son of Man". Over the next three years Nathanael saw many of Jesus' miracles and heard His amazing teaching. After the suffering of Christ and His glorious resurrection from the dead, Nathanael and some other disciples had breakfast with Jesus by the lake of Galilee (John 21). Now Nathanael understood the meaning of it all – because of Jesus' death on the cross for our sins, the way to heaven was open

for repentant sinners. This has been clearly expressed in the hymn, "Beneath the cross of Jesus":

*As to the holy patriarch
That wondrous dream was given,
So seems my Saviour's cross to me
A ladder up to heaven.*

Just as Philip invited Nathanael to "Come and See" so John in his Gospel invites us to come and see who Jesus is: "but these (words) are written that you may believe that Jesus is the Christ, the Son of God, and that by believing you may have life in his name" (John 20:31).

*John Hobson
(visiting preacher to Whitbourne Chapel)*

*An outside feature of the Chapel
In the grounds, quite near the apple
Trees, a large pit, concrete lined -
Our baptistry is what you'll find!
The water in it's very cold
To affirm your faith you must be bold.
Years ago some folk remember
They were baptised in November...*

*Gill Redman 07581 450177
email: paradiselost@btinternet.com*

Regular times

Services every Sunday morning at 11.00 for about an hour (coffee served at 10.45)

Chapel Prayer meeting every Sunday morning from 9.20 - 9.40

Communion on the first Sunday of each month at 12 noon for 15 minutes



COMPUTER PROBLEMS?

01373 812804

Email
Advice for new users
Anti-virus defence
Web sites
Custom programming

Networks - home & office
Home tuition
Web access
Privacy & security
Repairs

www.technojeeves.com

info@technojeeves.com

No Job Too Small



Local Electrician

Part "P" registered NAPIT approved
Domestic and Commercial Work Undertaken
Third Party Testing

Call for a Free no obligation Quotation

Tel: 01749 850769

Mobile: 07779 429786

email:

iain@fushi-electrical.co.uk

www.fushi-electrical.co.uk



E G MARTIN LTD Heating Oil Distributors

Telephone 01373 822784

Victory Road, West Wiltshire Trading Estate
Westbury, Wiltshire, BA13 4JL

WESTERN SKIP HIRE

Telephone 01373 865247

Victory Road, West Wiltshire Trading Estate
Westbury, Wiltshire, BA13 4JL



Windows, Doors & a whole lot more!

- **ENERGY RATED** windows - reduce your heating bills
- **NEW SECURITY** windows with Shootbolt locking
- **EXPERT FITTING** by our own fully trained team
- **REPUTATION** Over 26 Years of satisfied customers

Come & visit our Indoor Show Village

See our full range of Windows, Doors
Conservatories & our **New Orangery!**
at Woodcock Industrial Estate, Warminster

Tel 01985 215566  www.NewWindowsLtd.co.uk

new WINDOWS



Tales from the passenger seat



Almost every springtime, pupils panic and tell me they are going to have to pass quickly because they have heard that 'they' are raising the legal age from 17 to 18 years. It does get mentioned officially from time to time, but there are conflicting schools of thought. It is certainly apparent that maturity in drivers sees a reduction in accidents, but whether raising the age limit by one year would make any difference is open to debate. New drivers account for 25% of accidents, yet they represent only 5% of drivers, so lack of experience is a factor; but so is attitude – in particular, an immature attitude.

Making the test harder would be too simplistic, it wouldn't necessarily prevent the culprits from causing accidents. The learners who are, generally speaking, the most able to pass the test no matter how hard it was, would be the single male under 24 years. If the test was made so hard that they could not pass without zillions of lessons, then virtually no-one else would be able to pass either. So although making the standard higher can be viewed as a good thing in terms of getting all new drivers extra experience and skills before obtaining a licence, I don't think that accidents would suddenly drop.

I have observed that it is more to do with the person's attitude once they are let loose behind the wheel. There have been very capable learners who were able to demonstrate good skill, very able to control

and manoeuvre the car and easily reach a higher standard of competence than the average learner, yet it is precisely those pupils who I hear have written their car off because of silly driving.

The less able pupil passes, but because they know within themselves that they are not naturally 'very good', are the ones who take a more sensible approach to things.

So what should be done? Perhaps the insurance companies could ensure that no-one can drive a car above, say, category two, or three for the first year, then nothing above category four or five during the second year, and only then after three years be entitled to drive anything they can afford to insure. Simply making insurance premiums higher *en bloc* does not stop the determined person who wants to drive the lowered suspension uprated bhp car from finding the money to pay the insurance, or perhaps not even bother to insure it...

Road safety presentations by the police, the DVSA or the Council have included elements that seek to shock the audience into realising the seriousness of foolish driving. I can confirm that the single biggest conversation from any pupils I have taught who have been to such a presentation is the part that had the horrible 'seek to shock' element. Sometimes the truth hurts, but better hurt from some pictures than actually hurt in real life later on.

Steve Dayman-Johns

Corsley Reading Rooms

Attractive function hall, smaller meeting room and kitchen facilities all available for hire

Parties • clubs • meetings • classes • etc

Contact Rosemary Collins for details

01373 832789

NEED HELP WITH YOUR GARDEN?

Hedge cutting • Lawn mowing
Strimming • General gardening

Call Rob Clements

Tel 01373 832683 Mob 07586 337118

Wren House

Residence for the retired and elderly

We offer a range of care and accommodation to cater for the varying needs of retired and elderly people, either in the full care of Wren House, or assisted living in our two Coach House flats. Alternatively, more able and independent elderly people may choose to purchase an Orchard Retirement Apartment, with the assurance of care facilities close at hand.

Mrs Ellie Simmonds - Manager

Wren House, 32 Vicarage Street, Warminster, BA12 8JF

Telephone 01985 212578

ST DAVIDS WHITSAND BAY CORNWALL



Holiday Let
Sleeps up to 8
01373 464870

www.stdavidswhitsand.co.uk

JMW Accounting

Cost-effective accounting, bookkeeping,
VAT and payroll solutions for
sole traders and local businesses

01373 822363 or 07790 325321

email jackie@jmwaccounting.co.uk

www.jmwaccounting.co.uk

Paul Ledbury

Quality Painting and Decorating

30 years experience

**INTERIOR AND EXTERIOR
GENERAL MAINTENANCE**

**5 Hampshire Gardens
Westbury, Wiltshire
BA13 3EX**

Telephone 01373 858163

Mobile 07976 242045

Garston
VETERINARY CENTRE

Present this advert to receive 25% OFF
your dog's kennel cough vaccine
during April



www.garstonvets.co.uk



Jammy Jewellery

Personalised fingerprint
and footprint jewellery



www.jammyjewellery.co.uk

Black Dog Farm Bed & Breakfast



You will find a friendly welcome and a hearty breakfast in our listed Georgian Farmhouse. The quality en-suite bedrooms contain everything you need to ensure a comfortable stay.

Lyn and Fraser Mills

01373 832858 or 07878 954563

Black Dog Farm, Chapmanslade,
Wiltshire, BA13 4AE

www.blackdogfarm.co.uk

Allsorts of Fencing

Peter Allsop

allsortsoffencing.co.uk

All types of domestic and agricultural
fencing supplied and erected

Also:

- Decking and patios
- Sheds, pergolas and archways
- Topping of fields and paddocks

Allsorts-of-fencing@hotmail.co.uk

01373 832339

07710 180551

DAVID NOBLE

APPROVED ELECTRICAL CONTRACTOR

- Complete installations
- Minor works/repairs
- Testing
- Intruder alarms
- Lighting design



5 Swaledale Road
Warminster, Wiltshire
BA12 8FH

Tel 01985 214630
Mobile 07970 618232
dcnoble@btinternet.com



KB Landscape

30 years in landscaping

Phone

01373 832371

Mobile

07951 297173

Kevin Brixey - for quality and experience

5 Red Cottages Corsley Warminster Wiltshire BA12 7PS

Landscaping
Patios and paths
Turfing and seeding
Brick and stone walling
Decking and pergolas
Block paving
Gravel drives
Pond work
Fencing

A view from over the hedge...

Countryside Matters

The woodland floor is now greening up and soon the bluebells will be in bloom. The buds on the trees ready to burst open – spring is on its way!

Following a dry March (only 1/2" of rain up to 18th) and quite low temperatures at night the growth of grass and autumn planted crops has been slow.

Tractors are out working the ground for spring sown crops; grass fields are chain-harrowed to spread clumps of manure and mole hills evenly, ensuring the soil doesn't get mixed in to the grass silage which will be cut in May. Where the ground is uneven, especially after cattle have been treading the soil during the winter months, big, heavy rollers will be dragged behind the tractors to flatten the ground.

Early crops of potatoes will be sown so we're hoping there will be no late frosts to catch the emerging leaves. Many large-scale growers grow their potatoes under biodegradable plastic. The soil temperature warms up a little bit quicker and protects the potatoes' early growth.

Over the last 30 years the rooks have managed to discover new nesting accommodation after the elm trees were devastated by Dutch Elm Disease and certainly seem to be plentiful in numbers.

We also hear and see many more buzzards, ravens and red kites, just today I saw two egrets near Rodden stream, all of which would have been a rarity at one time.

The owl boxes put up late autumn are still unoccupied, but I will keep you posted on whether the barn owls move in. In the meantime, do look out for the odd pheasant sitting on a clutch of eggs both in gardens and woodland. Cock pheasants and blackbirds become a little road crazy during the breeding season, appearing to test drivers' ability to avoid them. Will we see or hear the cuckoo this coming month? Their calls have become much less frequent in our village. Do keep an eye on your dog when out walking as the undergrowth and hedges are teeming with birds and small mammals making nests and preparing for the breeding season.

Encourage the younger members of your family to go with you to see if there are frogspawn and tadpoles in ponds and pools, but do emphasise that an adult should always be with them.

Judith Helliar

Dates for your Diary

*Saturday 9th May Bluebell and
Woodland Walk in Corsley*

*Sunday 10th May Regation Service at
High House Farm, Corsley
Everyone welcome from both parishes*



Just say "No!" (sometimes)

Caroline Le Vine, Counsellor in Corsley

For those of you who remember the Grange Hill anti-drugs

message of the eighties, this isn't a piece about drugs! It is, as so many of my articles are, about being true to yourself.

How many times have you agreed to do something only to regret it? You feel you should help if someone asks but doing so might mean you miss doing something else you'd prefer to be involved with, even if that 'something' is simply having time to yourself to do nothing much. You might be thought of as selfish if you decline. Or you might be accused of being boring if you don't want to attend an event that all your friends are off to. Perhaps you'll tell yourself that you're unprofessional if you don't sign up for overtime or that you're a wimp if you avoid something that scares you.

Sometimes, it's good to take the pragmatic approach, to lend a hand, to give up your time, to push yourself beyond the usual routine. It can pay off - someone else benefits, you have an unexpectedly great time or learn something new. You may add to your sense of yourself and that's grand. But saying 'yes' can become a habit - something we do without checking in with our inner selves. Is this really what we want to do? Could it really be beneficial to us and/or the other person? Or do we/they actually need something else? If we need rest and quiet, it's hard to say 'no' when our friends are used to the opposite.

If someone frequently asks for our help, are we really helping by always saying 'yes' or are we encouraging their dependence on us when maybe they could learn a little self-reliance and, in the process, gain some self-respect? I'm not advocating callousness, of course. If someone is in genuine need, help is essential but it doesn't necessarily have to be you that provides it all the time. Share the responsibility where you can and consider examining your own motivation for habitually agreeing to help. Do you need to be needed? And if you are constantly doing things you don't want to, remember that you're likely to exhaust yourself and be less able to help usefully. You'll run out of energy and start resenting the people you wanted to support.

As usual, it's all about balance and careful listening to your own needs as well as the demands of others. And finally, if you say 'no' from time to time, people will know that, when you say 'yes', you really mean it.

*I practise at St Margaret's Church,
Deep Lane, Corsley.*

le_vine@sky.com

07817 192008

www.carolinelevine.co.uk

or find me on

www.counselling-directory.org.uk

Small ads

£1 for EACH item for sale or wanted (cash only please) - at one of the two drop-off locations)

Please note: no cash, no advert!

WANTED

Space suitable for use as an artist's studio for long term rent in Corsley/Chapmanslade area. 100 sq ft (approx) ideal size but anything suitable considered. Ideally with natural light and electric. Hot water a bonus but not essential. Access needed to take work to and from studio. Toilet useful but not essential. Hours of use to be agreed with owner. Please contact Samantha West by phone **07855 440648, 01373 455634** or email **sam@samantha-west.co.uk**

The mobile library service visits next on:

Thursday 2nd April

10:10 - 10:30

Corsley, by the Royal Oak pub

10:45 - 11:00

Chapmanslade, outside 132 High St

11:05 - 12:00

Chapmanslade, by the school

Future dates for this round are:

**Thursdays 16th and 30th April,
14th and 28th May**

Answers to Bob's Bafflers

- 1 Mafia
- 2 Caves
- 3 Affidavit
- 4 Patina
- 5 Circus
- 6 Uncle Sam
- 7 Bird usually seen around coastal areas
- 8 37
- 9 Jehovah's Witnesses
- 10 Richard III
- 11 Chess
- 12 Little Tommy Tittlemouse

Local organisation adverts

£2.00 per month for a small boxed advert or £7.50 for a full page. Full page adverts are allocated depending on space available and cannot be guaranteed. All monies must be at one of the two drop-off locations (Barter's Plant Centre or Acres Supply Garden Centre) by **4pm** on the **19th** of the month. Please note: no cash, no advert!

Trade advertising

Annual trade advertisements (12 issues, when space is available)

1 space	(69mm wide x 33mm high)	£22.00
2 spaces	(69mm wide x 66mm high)	£42.00
3 spaces	(quarter page - 69mm wide x 100mm high)	£60.00
4 spaces	(138mm wide x 66mm high)	£75.00
6 spaces	(half page - 138mm wide x 100mm high)	£104.00

Trade advertisement material should be supplied in print-ready format, to the chosen standard size and correct shape.

For trade advertising enquiries, please contact David James (Trade advert coordinator/Treasurer) at either thebridge832@gmail.com or 01373 832443.



Garden Machinery Specialist

Authorised Dealer

HONDA

STIHL

SALES • SERVICE • PARTS



Professional Tree Surgeons

- **Tree pruning**
- **Felling**
- **Hedge trimming**
- **Barn-dried logs**

Andy Brake

01373 832965

www.mendipmowers.co.uk

Green Farm Ind Est, Chapmanslade, Westbury, BA12 4AN

01373 830429

www.newlandstreecare.co.uk

cloud
homecare

Quality care and
support in Warminster
and the surrounding
villages



We are a small, Corsley based care provider

**We provide care to people who need support
to remain living in their own home**

**Please telephone or email us, or visit our
website for further details**

**Tel. 01373 832 597 enquiries@cloudhomecare.co.uk
www.cloudhomecare.co.uk**

ACRES SUPPLY

WHERE GARDENS GROW



ACRES SUPPLY GARDEN CENTRE
BAY TREE FARM, CORSLEY
NR WARMINSTER
WILTS, BA12 7PP

01373 832591

OPEN 7 DAY A WEEK

www.acressupply.com

FG COLLIER

KITCHENS • BATHROOMS • INTERIORS

WHOLE HOUSE DESIGN & SOLUTIONS



FG COLLIER LTD 29-35 EDWARD STREET WESTBURY WILTSHIRE BA13 3BL
TEL 01373 822227 EMAIL [INFO@FGCOLLIER.COM](mailto:info@fgcollier.com) WEB FGCOLLIER.COM